



Illustrated Parts List

ProMax 6000



Model

Mfg. No.	Description
030399-0	ProMax 6000A CE
030400-0	ProMax 6000A UK
030401-0	ProMax 6000A AU
030402-0	ProMax 6000EA CE
038030-00	ProMax 6000A Argentina

Manual Part No. 103985GS

Revision D

Rev. Date: 5/10/2013

Not for
Reproduction

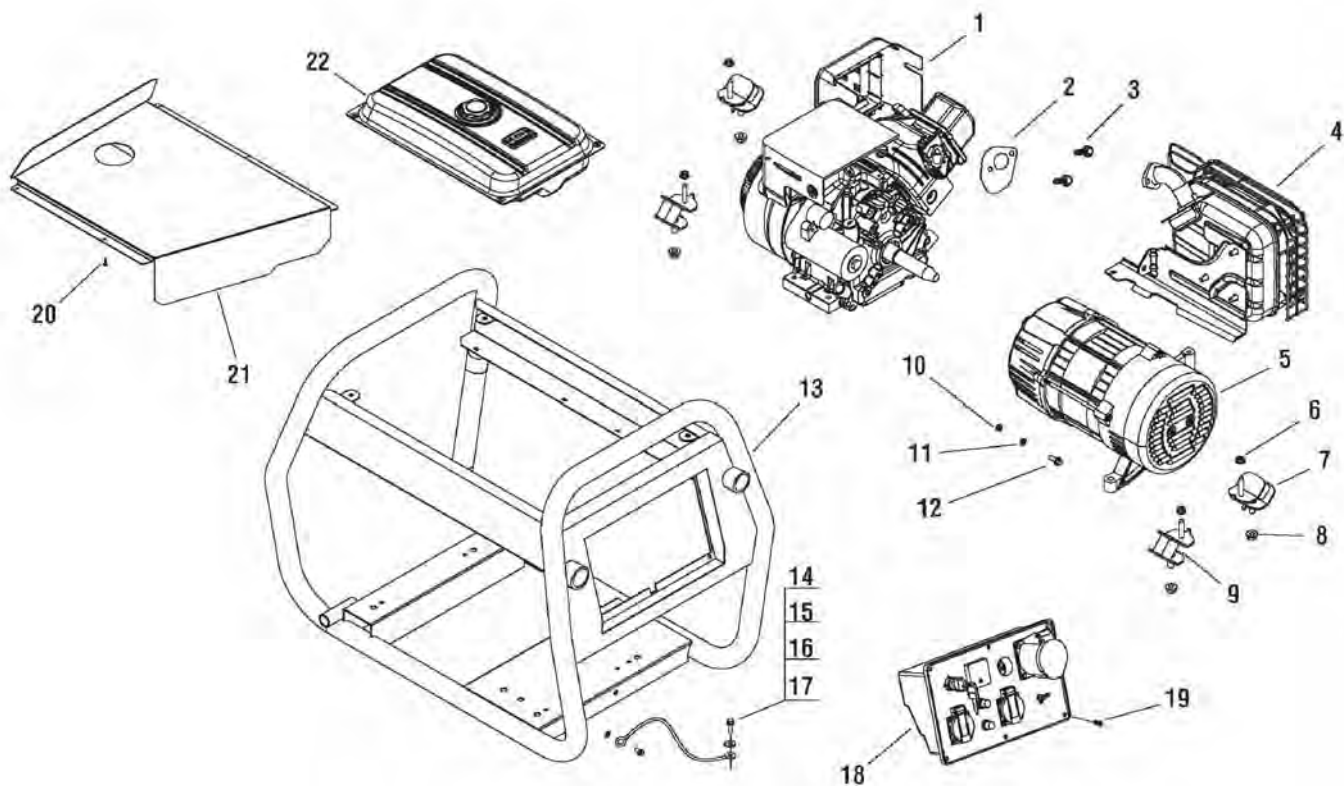
PRODUCT COMPONENTS	PAGES
Main Unit	4
Alternator	5
Fuel Tank	6
Exhaust And Fittings	7
Battery & Tray	8
Control Panel - ARG	9
Control Panel - AU	10
Control Panel - CE	11
Control Panel - UK	12
Decals	13
Torque Specification Chart	Inside Back Cover

Not for
Reproduction

Main Unit

0001

NOTE: Unless noted otherwise,
use the standard hardware torque
specification chart.



REF. PART NO.	DESCRIPTION	REF. PART NO.	DESCRIPTION
1	20H232-0126-B1 ** ENGINE, 10HP, 50HZ (Used on Series 6000A)	14	----- * SCREW, Self-Tapping, st5.5x18mm
1	20H237-0115-B1 ** ENGINE, 10HP, 50HZ (Used on Series 6000EA)	15	103665GS GROUNDING WIRE, 10cm
2	794818 GASKET, Muffler	16	----- * BOLT
3	794844 SCREW	17	----- * WASHER
4	791181GS KIT, Muffler, QGS	18	103896GS ASSEMBLY, Control Panel, German (CE)
5	103906GS ALTERNATOR ASSEMBLY	18	103844GS ASSEMBLY, Control Panel, UK (UK)
5	104910GS ALTERNATOR ASSEMBLY (Used on Serial Number 10W082000 and after)	18	103897GS ASSEMBLY, Control Panel, AU (Australia)
6	----- * NUT, Hex, M8	18	704026 ASSEMBLY, Control Panel, ARG (Argentina)
7	103794GS MOUNT, Vibration, 60	19	----- * SCREW, M6 x 16
8	----- * NUT, Hex, M10	20	----- * SCREW, Self-Tapping, st5.5x13
9	103793GS MOUNT, Vibration, 45	21	103908GS HEAT SHIELD AND FOAM
10	----- * WASHER, 8mm	22	103663GS TANK, Fuel, 15L
11	----- * WASHER, Spring, 8mm		
12	----- * BOLT, Flange, M8 x 25mm		
13	103752GS CRADLE, PM6000		

Footnotes

* Items without part numbers are common fasteners and are available at local hardware stores.

** For Replacement, Contact Engine Manufacturer

The above parts group applies to the following Mfg. Nos.:

030399-0 - ProMax 6000A CE
030400-0 - ProMax 6000A UK

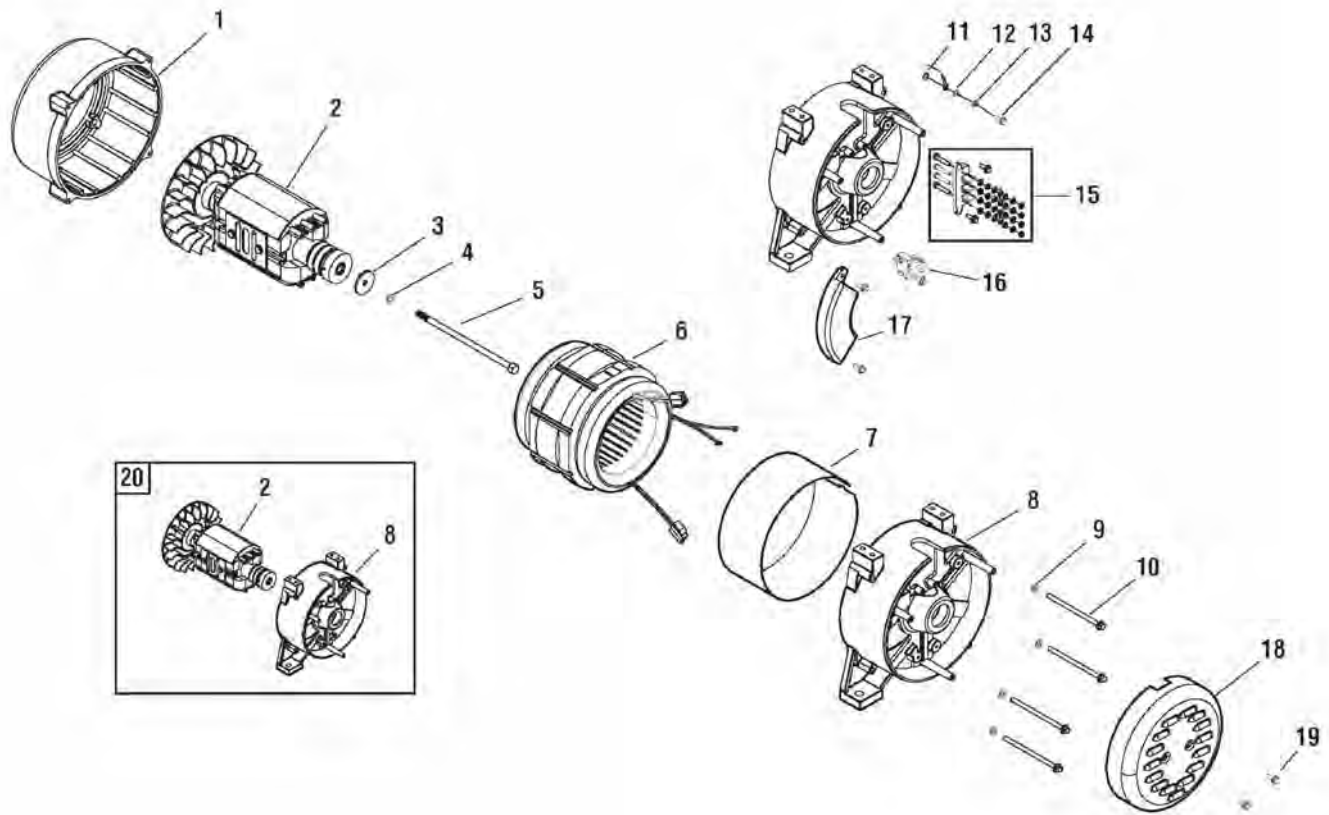
030401-0 - ProMax 6000A AU
030402-0 - ProMax 6000EA CE

038030-00 - ProMax 6000.

Alternator

030399alt

NOTE: Unless noted otherwise, use the standard hardware torque specification chart.



REF. PART NO.	DESCRIPTION	REF. PART NO.	DESCRIPTION
1	103766GS CASTING, Front	13	----- * WASHER, Spring, 5mm
2	----- ** ROTOR ASSEMBLY, 5.0kw (Used on Serial Number 10W000000 and before)	14	----- * SCREW, Hex, M5 x 12mm
2	700447 ROTOR ASSEMBLY, 5.0kw (Used on Serial Number 10W082000 and after)	15	103649GS ASSEMBLY, Terminal Block
3	----- * WASHER, 8mm	16	103765GS ASSEMBLY, Carbon brush
4	----- * WASHER, Spring, 8mm	17	103764GS AVR, 5kw
5	103741GS BOLT, Hex, 5/16-230 (24(unc)	18	103797GS REAR COVER
6	103905GS ASSEMBLY, Stator, 5.0kw	19	----- * SCREW, Hex, M5 x 12mm
7	103891GS ALTERNATOR BAND, 620*130	20	104870GS KIT, Rotor & Casting (Includes Ref. Nos. 2 8)
8	----- ** CASTING, Rear (Used on Serial Number 10W000000 and before)		
8	700449 CASTING, Rear (Used on Serial Number 10W082000 and after)		
9	----- *WASHER, Spring, 6mm		
10	103742GS BOLT, Hex, M6 x 180mm		
11	----- * WASHER, 5mm		
12	----- * WASHER, 5mm		

Footnotes

* Items without part numbers are common fasteners and are available at local hardware stores.

** No Longer Available, Order Rotor & Casting Kit 104870GS.

The above parts group applies to the following Mfg. Nos.:

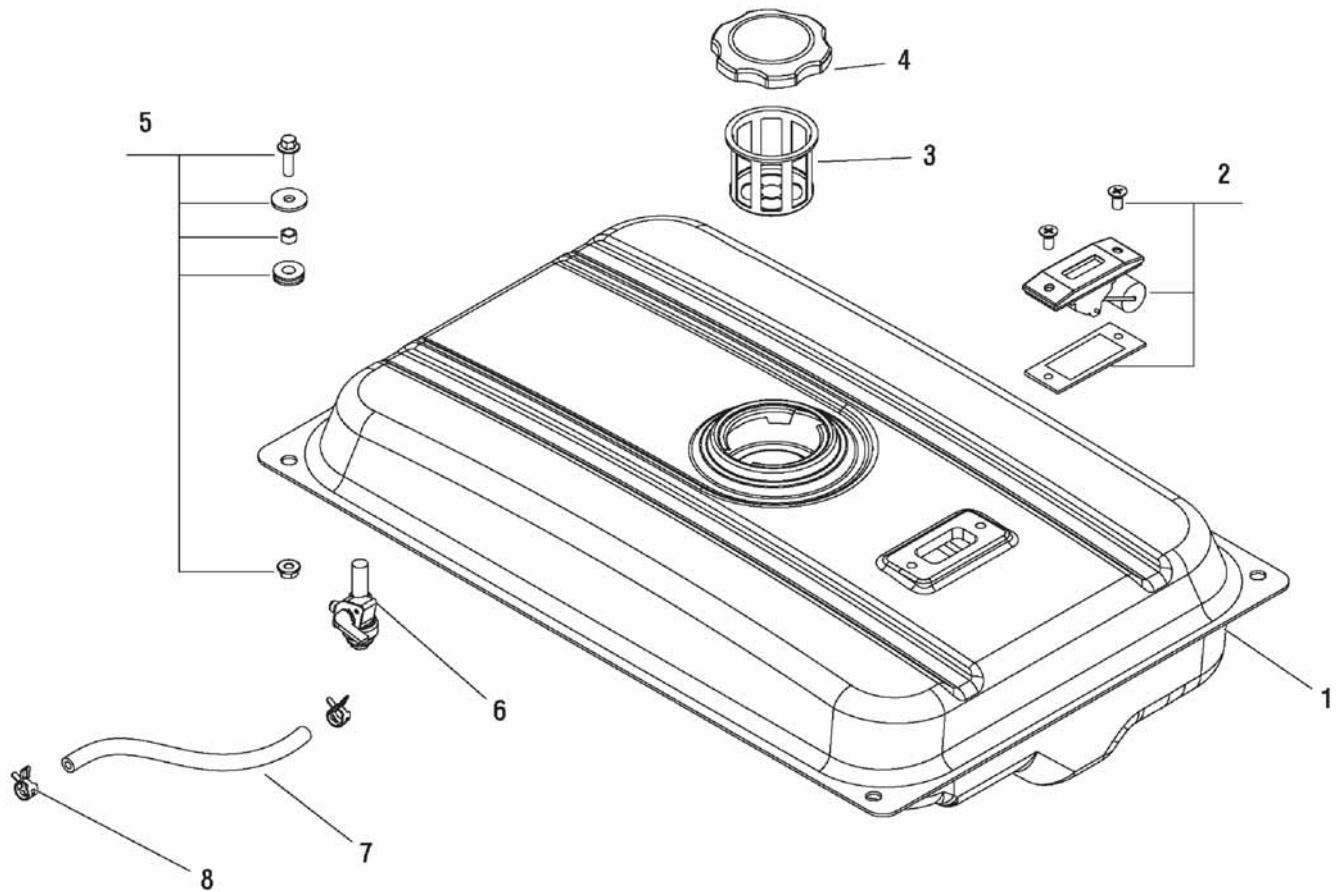
030399-0 - ProMax 6000A CE
030400-0 - ProMax 6000A UK

030401-0 - ProMax 6000A AU
030402-0 - ProMax 6000EA CE

Fuel Tank

0005

NOTE: Unless noted otherwise, use the standard hardware torque specification chart.



REF. PART NO.	DESCRIPTION	REF. PART NO.	DESCRIPTION
1	103653GS TANK, Fuel, 15L		
2	103655GS ASSEMBLY, Fuel Gauge		
3	103631GS FILTER CUP		
4	103632GS CAP, Fuel Tank		
5	103656GS KIT, Mounting		
6	103679GS CONNECTOR, Fuel Tank		
7	----- FUEL PIPE, 11 x 110mm		
8	----- CLAMP, Fuel Pipe		

Footnotes

The above parts group applies to the following Mfg. Nos.:

030399-0 - ProMax 6000A CE
030400-0 - ProMax 6000A UK

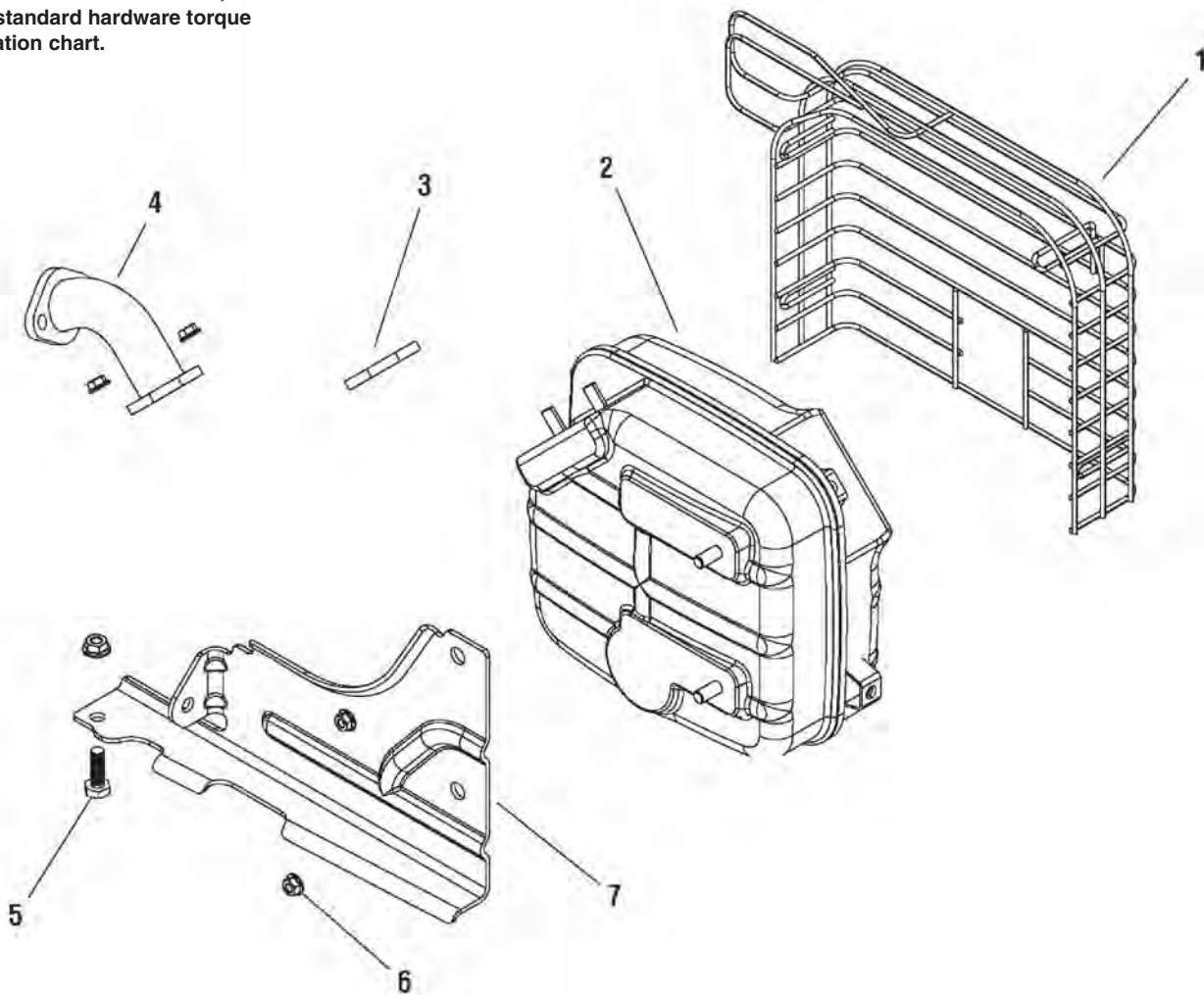
030401-0 - ProMax 6000A AU
030402-0 - ProMax 6000EA CE

038030-00 - ProMax 6000.

Exhaust And Fittings

0006

NOTE: Unless noted otherwise, use the standard hardware torque specification chart.



REF.	PART NO.	DESCRIPTION	REF.	PART NO.	DESCRIPTION
1	103302GS	GUARD, Muffler			
2	103303GS	MUFFLER BODY, QGS			
3	710250	GASKET, Muffler (engine side)			
4	103308GS	MANIFOLD, Exhaust, QGS			
5	----	* BOLT, Hex, M8 x 45mm			
6	----	* NUT, Hex, M8			
7	103297GS	BRACKET, Muffler, QGS			

Footnotes

* Items without part numbers are common fasteners and are available at local hardware stores.

The above parts group applies to the following Mfg. Nos.:

030399-0 - ProMax 6000A CE
030400-0 - ProMax 6000A UK

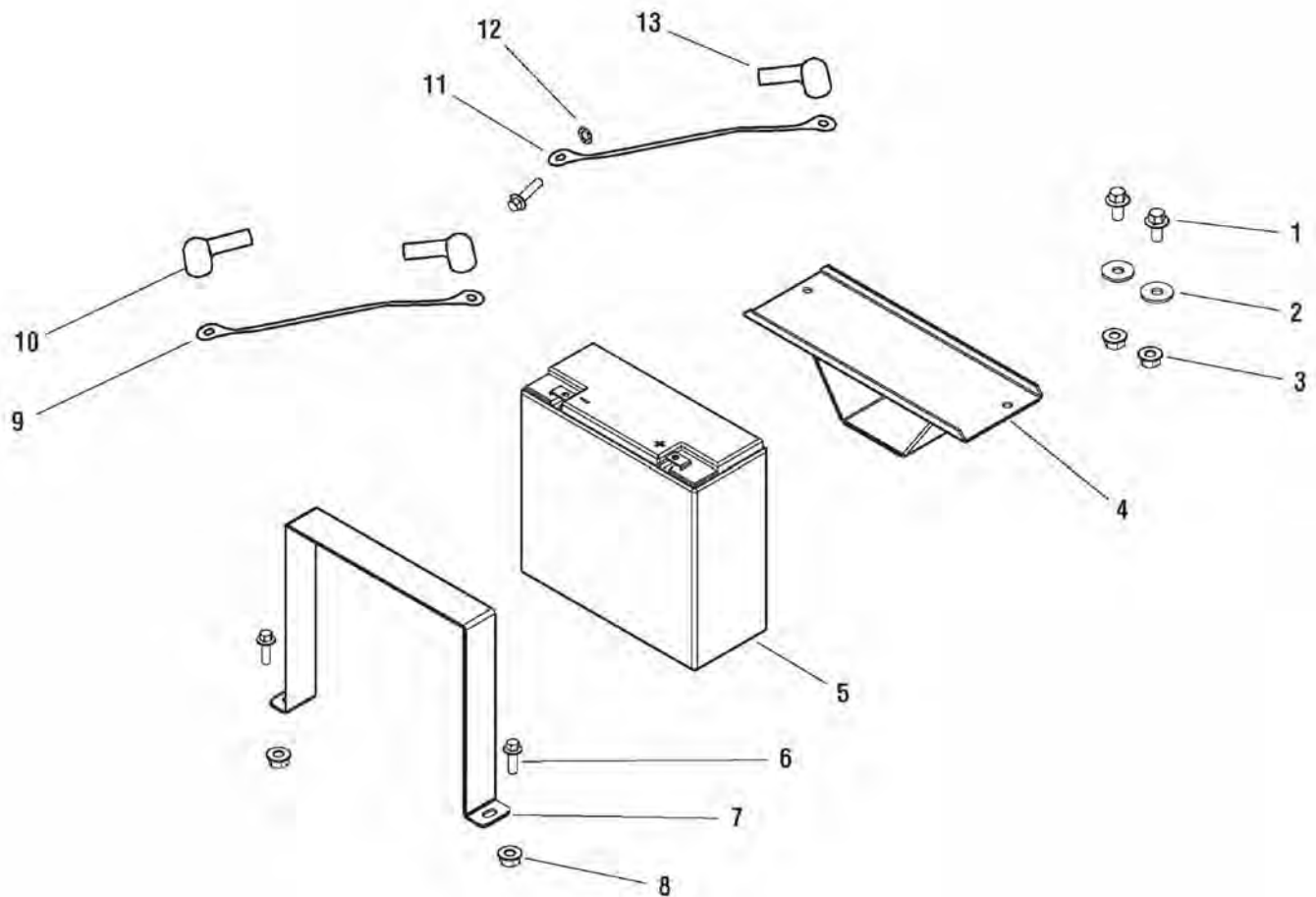
030401-0 - ProMax 6000A AU
030402-0 - ProMax 6000EA CE

038030-00 - ProMax 6000.

Battery & Tray

0004

NOTE: Unless noted otherwise,
use the standard hardware torque
specification chart.



REF.	PART NO.	DESCRIPTION	REF.	PART NO.	DESCRIPTION
1	----	* BOLT, Hex, M8 x 12mm			
2	----	* WASHER, 8mm			
3	----	* NUT, M8			
4	103756GS	TRAY, Battery			
5	103774GS	BATTERY, 18AH, Gaston			
6	----	* BOLT, Hex, M6 x 20mm			
7	103757GS	STRAP, Battery			
8	----	* NUT, M6			
9	103739GS	CABLE, Battery, Black, 300mm			
10	103737GS	CAP, Insulation, Black			
11	103740GS	CABLE, Battery, Red, 500mm			
12	----	* WASHER			
13	103738GS	CAP, Insulation, Red			

Footnotes

* Items without part numbers are common fasteners and are available at local hardware stores.

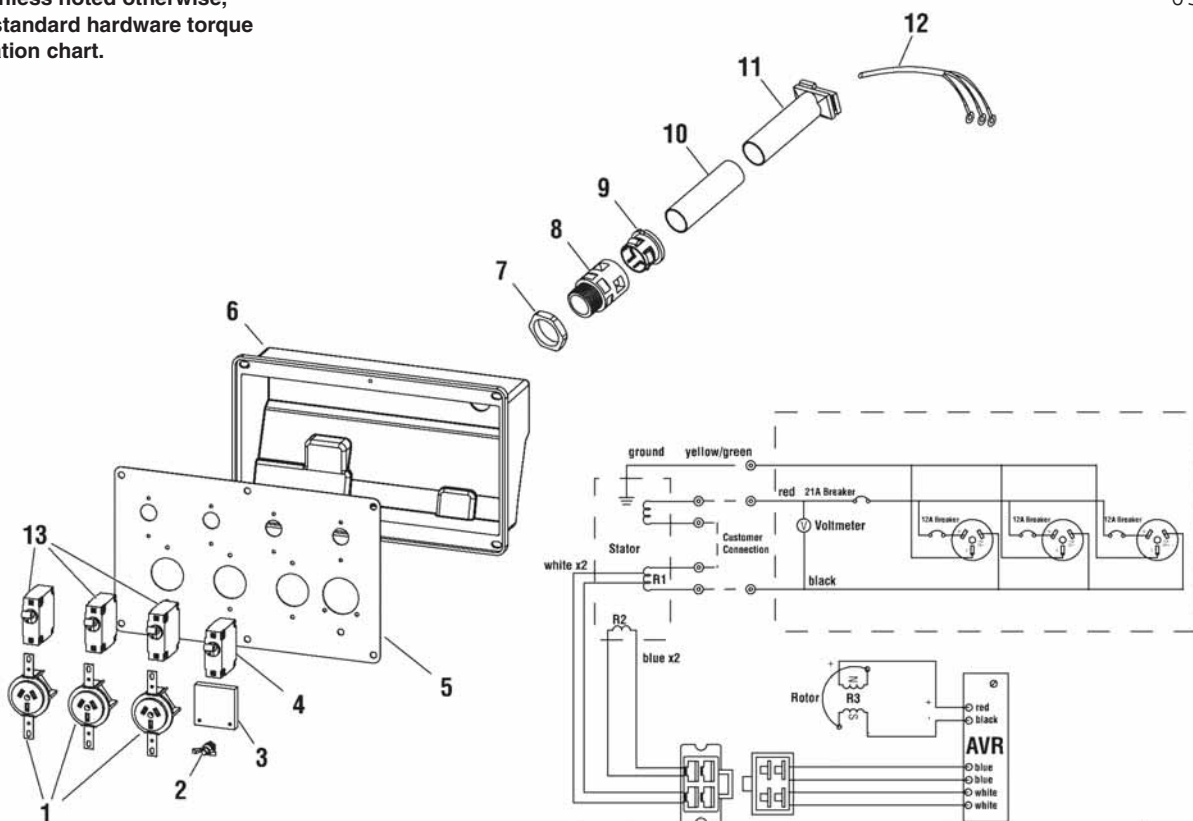
The above parts group applies to the following Mfg. Nos.:

030402-0 - ProMax 6000EA CE

Control Panel - ARG

038030cp

NOTE: Unless noted otherwise, use the standard hardware torque specification chart.



Ref	Wire Colour	Winding	Resistance @ 20C
R1	Red-Black	Stator Power	1.34Ω±10%
R2	Blue-Blue	Stator Excitation	1.65Ω±10%
R3	N/A	Rotor Field	31.00Ω±10%

REF.	PART NO.	DESCRIPTION	REF.	PART NO.	DESCRIPTION
1	704111	SOCKET, 10A, 250V			
2	----	GROUNDING WIRE ASSEMBLY			
3	704109	VOLTMETER, 99L4, 300V			
4	704108	CIRCUIT BREAKER / SWITCH, 1P/21A			
5	704107	PLATE, Steel, Control Panel			
6	704106	COVER, Control Panel			
7	704105	NUT, Plastic, Cable Holder			
8	704104	CONNECTING END, Cable Holder			
9	704103	COVER, Connecting End, Cable Holder			
10	704102	CABLE HOLDER			
11	704101	CABLE PROTECTOR, 190			
12	704100	CABLE ASSEMBLY			
13	704099	CIRCUIT BREAKER / SWITCH, 1P/10A			

Footnotes

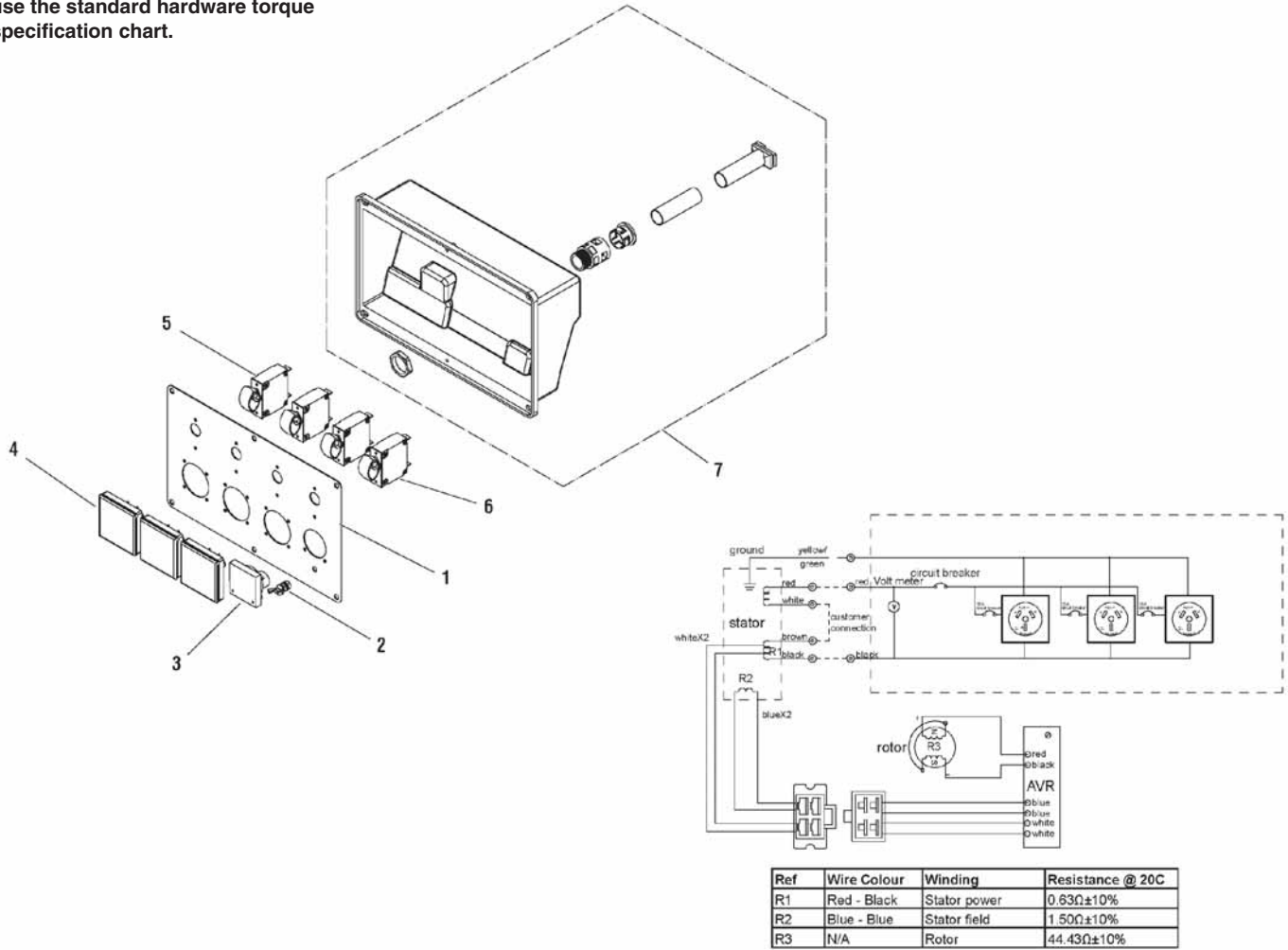
The above parts group applies to the following Mfg. Nos.:

038030-00 - ProMax 6000A Argentina

Control Panel - AU

0008

NOTE: Unless noted otherwise, use the standard hardware torque specification chart.



REF.	PART NO.	DESCRIPTION	REF.	PART NO.	DESCRIPTION
1	103943GS	PLATE, Control Panel, AU			
2	----	KIT, Grounding			
3	103919GS	VOLTMETER			
4	103879GS	SOCKET, Australian, Blue			
5	103944GS	CIRCUIT BREAKER / SWITCH, 1P/15A			
6	103675GS	CIRCUIT BREAKER / SWITCH, 1P/21A			
7	103909GS	ASSEMBLY, Back Cover, Control Panel			

Footnotes

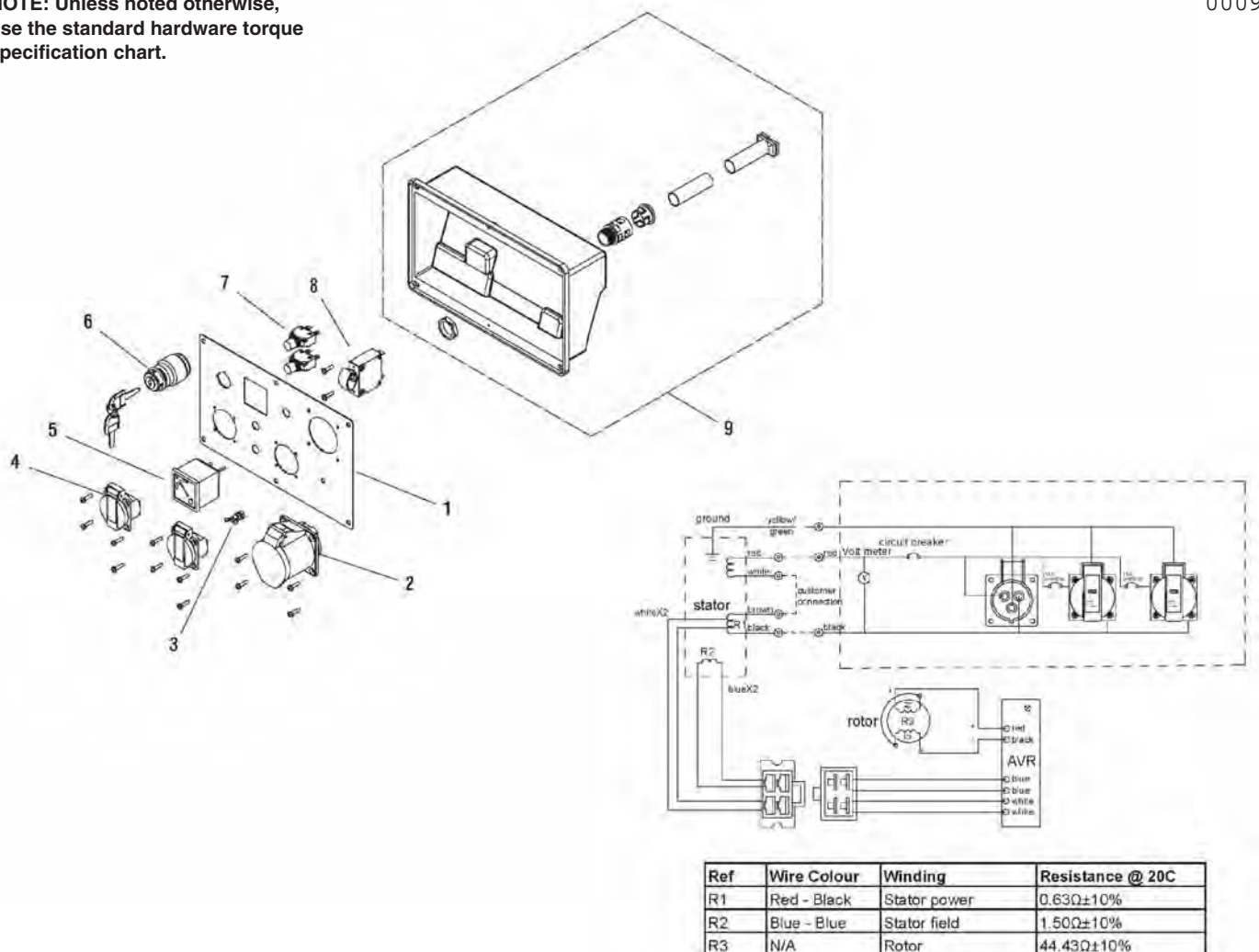
The above parts group applies to the following Mfg. Nos.:

030401-0 - ProMax 6000A AU

Control Panel - CE

0009

NOTE: Unless noted otherwise,
use the standard hardware torque
specification chart.



Ref	Wire Colour	Winding	Resistance @ 20C
R1	Red - Black	Stator power	0.63Ω±10%
R2	Blue - Blue	Stator field	1.50Ω±10%
R3	N/A	Rotor	44.43Ω±10%

REF. PART NO.	DESCRIPTION	REF. PART NO.	DESCRIPTION
1	103911GS PLATE, Control Panel (CE)		
2	103913GS SOCKET, CEE, 32A/230V		
3	----- KIT, Grounding		
4	103855GS SOCKET SCHUKO, 16A, Blue, Shuttered		
5	103672GS VOLTMETER		
6	103895GS KEY SWITCH		
7	103914GS BREAKER, 15A		
8	103675GS CIRCUIT BREAKER / SWITCH, 1P/21A		
9	103909GS ASSEMBLY, Back Cover, Control Panel		

Footnotes

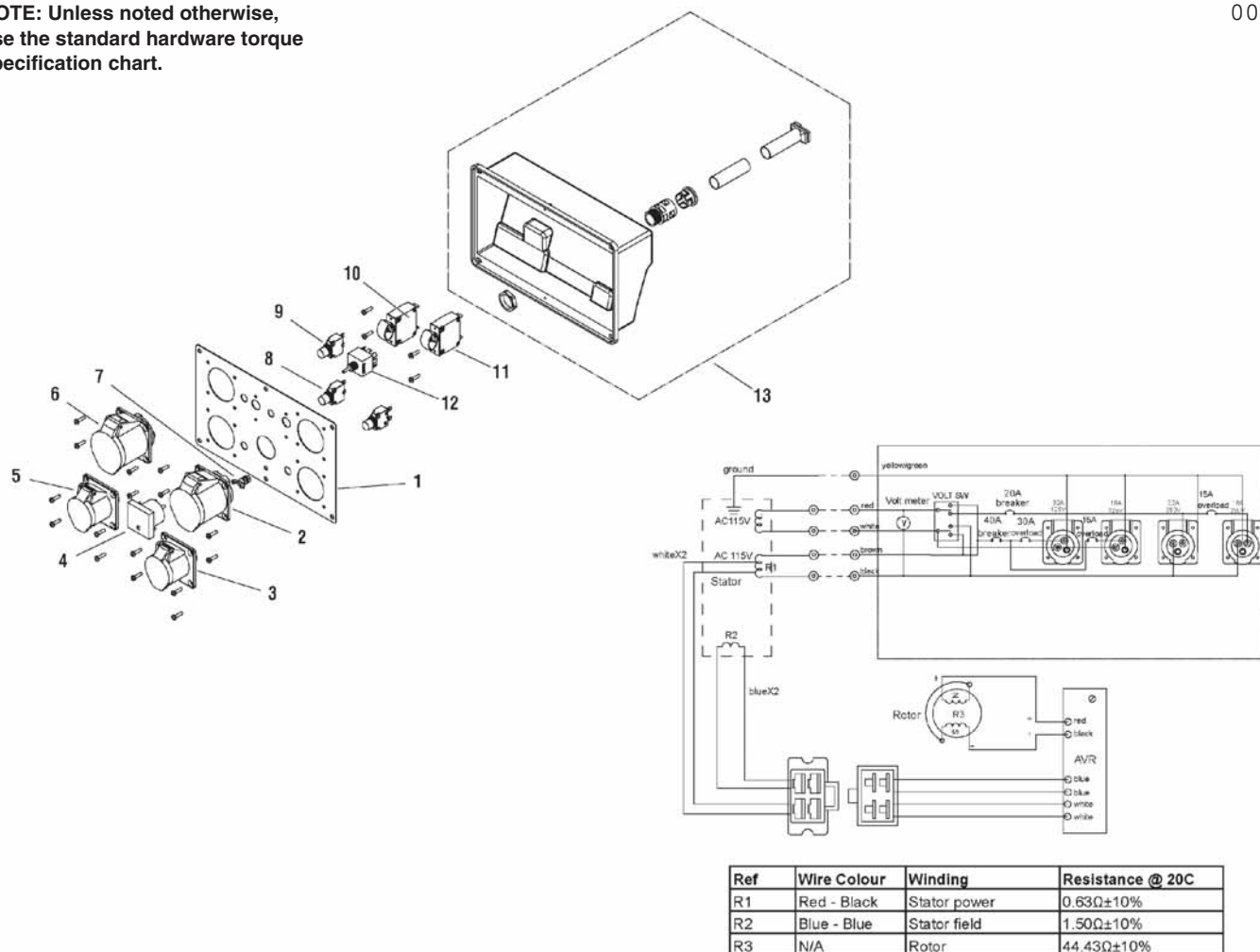
The above parts group applies to the following Mfg. Nos.:

030399-0 - ProMax 6000A CE
030402-0 - ProMax 6000EA CE

Control Panel - UK

0010

NOTE: Unless noted otherwise, use the standard hardware torque specification chart.



REF.	PART NO.	DESCRIPTION	REF.	PART NO.	DESCRIPTION
1	103916GS	PLATE, Control Panel, UK (UK)			
2	103917GS	SOCKET, CEE, 16A/115V			
3	103918GS	SOCKET, CEE, 16A/230V			
4	103919GS	VOLTMETER			
5	103913GS	SOCKET, CEE, 32A/230V			
6	103940GS	SOCKET, CEE, 32A/115V			
7	-----	KIT, Grounding			
8	103914GS	BREAKER, 15A			
9	103941GS	BREAKER, 30A			
10	103915GS	CIRCUIT BREAKER / SWITCH, 1P/42A			
11	103675GS	CIRCUIT BREAKER / SWITCH, 1P/21A			
12	103942GS	SWITCH, Voltage			
13	103909GS	ASSEMBLY, Back Cover, Control Panel			

Footnotes

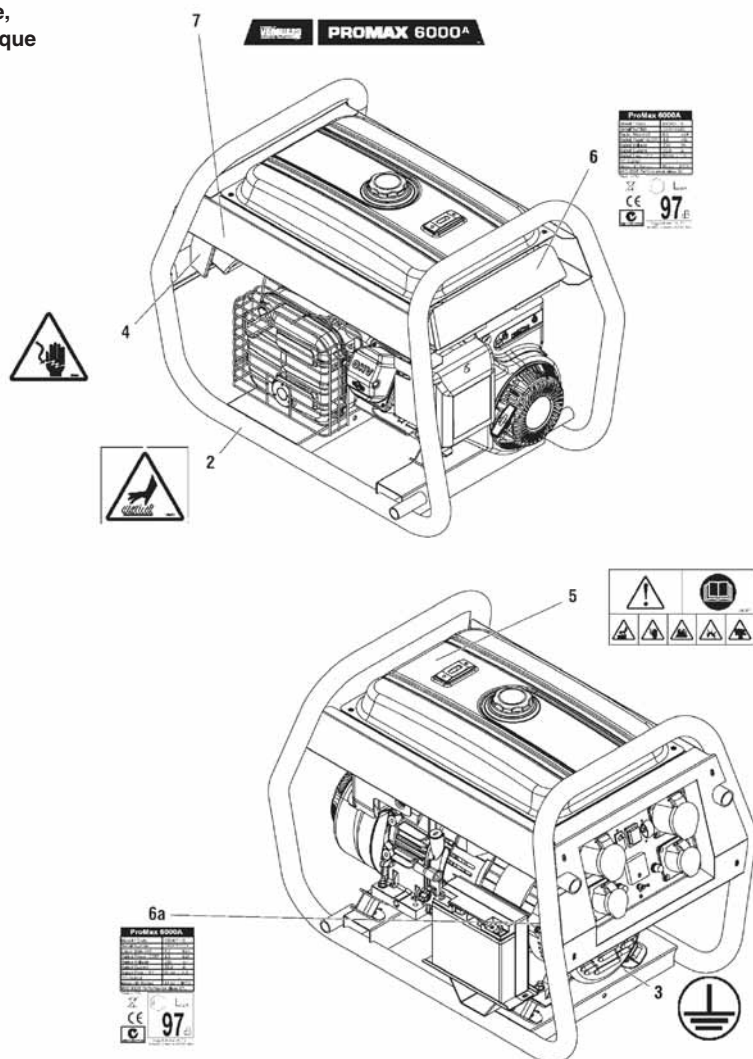
The above parts group applies to the following Mfg. Nos.:

030400-0 - ProMax 6000A UK

Decals

0007

NOTE: Unless noted otherwise, use the standard hardware torque specification chart.



REF. PART NO.	DESCRIPTION	REF. PART NO.	DESCRIPTION
1	103858GS KIT, Decals (Includes Ref. Nos. 2, 3, 4 & 5)		
2	----- DECAL, Hot Hazard Warning		
3	----- DECAL, Ground		
4	----- DECAL, Electrical Hazard Warning		
5	----- DECAL, Warning / Read Manual		
6	----- DECAL, Dataplate (Used before Serial No. BAA0003738)		
6a	----- DECAL, Dataplate (Used after Serial No. BAA0003739)		
7	103604GS DECAL, ProMax 9000		
7	103599GS DECAL, ProMax 6000		

Footnotes

The above parts group applies to the following Mfg. Nos.:

030399-0 - ProMax 6000A CE
030400-0 - ProMax 6000A UK

030401-0 - ProMax 6000A AU
030402-0 - ProMax 6000EA CE

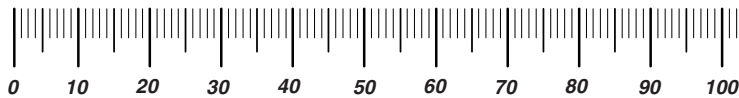
038030-00 - ProMax 6000.

Not for
Reproduction

Hardware Identification & Torque Specifications

Torque Specification Chart								
FOR STANDARD METRIC MACHINE HARDWARE (Tolerance ± 20%)								
Property Class	5.6		8.8		10.9		12.9	
	Class 5.6		Class 8.8		Class 10.9		Class 12.9	
Size Of Hardware	in/lbs		in/lbs		in/lbs		in/lbs	
	ft/lbs	Nm.	ft/lbs	Nm.	ft/lbs	Nm.	ft/lbs	Nm.
M3	5.88	.56	13.44	1.28	19.2	1.80	22.92	2.15
M4	13.44	1.28	30.72	2.90	43.44	4.10	52.56	4.95
M5	26.4	2.50	60.96	5.75	5.97	8.10	7.15	9.7
M6	44.64	4.3	7.3	9.9	10.3	14	12.1	16.5
M7	5.2	7.1	12.1	16.5	16.9	23	19.9	27
M8	7.7	10.5	17.7	24	25	34	29	40
M10	15	21	35	48	50	67	59	81
M12	26	36	61	83	86.2	117	103	140
M14	42	58	101	132	136	185	162	220
M16	64	88	147	200	210	285	250	340
M18	89	121	202	275	287	390	346	470
M20	126	171	290	390	405	550	486	660
M22	169	230	390	530	559	745	656	890
M24	217	295	497	375	708	960	840	1140
M27	320	435	733	995	1032	1400	1239	1680
M30	435	590	995	1350	1401	1900	1681	2280
M33	590	800	1349	1830	1902	2580	2278	3090
M36	759	1030	1740	2360	2441	3310	2935	3980
M39	988	1340	2249	3050	3163	4290	3798	5150

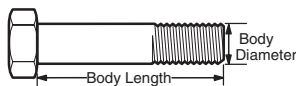
The guides and ruler furnished below are designed to help you select the appropriate hardware.



Nut, M8

Thread Diameter (mm)
Inside Diameter (in)
Threads per inch

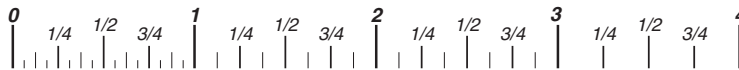
Nut, 1/2-16



Screw, M8- 1.25 x 25

Thread Diameter (mm)
Body Diameter
Distance between threads (mm)
Threads per inch
Body Length (mm)
Body Length (in)

Screw, 1/2- 16 x 2



Standard Hardware Sizing

When a washer or nut is identified as 1/2" (M8), this is the *Nominal size*, meaning the *inside diameter* is 1/2 inch (8mm metric thread diameter); if a second number is present it represents the *threads per inch* (distance between threads).

When bolt or capscrew is identified as 1/2 - 16 x 2" (M8 - 1.25 x 50), this means the *Nominal size*, or body diameter is 1/2 inch (8mm metric thread diameter), the second number, 16, represents the *threads per inch*, (1.25 thread diameter). The final number is the body length of the bolt or screw, 2 inches (50mm).

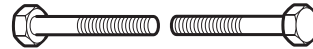
Torque Specification Chart						
FOR STANDARD MACHINE HARDWARE (Tolerance ± 20%)						
Hardware Grade	No Marks		SAE Grade 5		SAE Grade 8	
	SAE Grade 2		SAE Grade 5		SAE Grade 8	
Size Of Hardware	in/lbs		in/lbs		in/lbs	
	ft/lbs	Nm.	ft/lbs	Nm.	ft/lbs	Nm.
8-32	19	2.1	30	3.4	41	4.6
8-36	20	2.3	31	3.5	43	4.9
10-24	27	3.1	43	4.9	60	6.8
10-32	31	3.5	49	5.5	68	7.7
1/4-20	66	7.6	8	10.9	12	16.3
1/4-28	76	8.6	10	13.6	14	19.0
5/16-18	11	15.0	17	23.1	25	34.0
5/16-24	12	16.3	19	25.8	29	34.0
3/8-16	20	27.2	30	40.8	45	61.2
3/8-24	23	31.3	35	47.6	50	68.0
7/16-14	30	40.8	50	68.0	70	95.2
7/16-20	35	47.6	55	74.8	80	108.8
1/2-13	50	68.0	75	102.0	110	149.6
1/2-20	55	74.8	90	122.4	120	163.2
9/16-12	65	88.4	110	149.6	150	204.0
9/16-18	75	102.0	120	163.2	170	231.2
5/8-11	90	122.4	150	204.0	220	299.2
5/8-18	100	136	180	244.8	240	326.4
3/4-10	160	217.6	260	353.6	386	525.0
3/4-16	180	244.8	300	408.0	420	571.2
7/8-9	140	190.4	400	544.0	600	816.0
7/8-14	155	210.8	440	598.4	660	897.6
1-8	220	299.2	580	788.8	900	1,244.0
1-12	240	326.4	640	870.4	1,000	1,360.0

NOTES

- These torque values are to be used for all hardware excluding: locknuts, self-tapping screws, thread forming screws, sheet metal screws and socket head setscrews.
- Recommended seating torque values for locknuts:
 - for prevailing torque locknuts - use 65% of grade 5 torques.
 - for flange whizlock nuts and screws - use 135% of grade 5 torques.
- Unless otherwise noted on assembly drawings, all torque values must meet this specification.

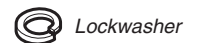
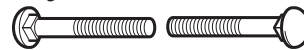
Common Hardware Types

Hex Head Capscrew



Washer

Carriage Bolt



Lockwasher



Hex Nut

Wrench & Fastener Size Guide

1/4" Bolt or Nut Wrench—7/16"	5/16" Bolt or Nut Wrench—1/2"	3/8" Bolt or Nut Wrench—9/16"	7/16" Bolt or Nut Wrench (Bolt)—5/8" Wrench (Nut)—11/16"	1/2" Bolt or Nut Wrench—3/4"
M6 Bolt or Nut Wrench—10mm	M8 Bolt or Nut Wrench—13mm	M10 Bolt or Nut Wrench—17mm	M12 Bolt or Nut Wrench—19mm	M14 Bolt or Nut Wrench—22mm



Not for
Reproduction

Briggs & Stratton Power Products Group

Copyright© 2013 Briggs & Stratton Power Products Group. All rights reserved. No part of this page can be reproduced or transmitted in any form by any means without the express written permission of Briggs & Stratton Power Products Group.