

# BA451/BA451D/BA531/BA 531D

---

Model:

BA 451 D NIL

BA 451 NIL

BA 531 D NIL

BA 531 NIL



Part List US-English

01-03-2015

# Table of Contents

BA451/BA451D/BA531/BA 531D

<b>Solution tank</b>	<b>3</b>
<b>Recovery tank</b>	<b>5</b>
<b>Chassis system</b>	<b>7</b>
<b>Wheels and traction</b>	<b>9</b>
<b>Handle assembly - BA 451 D - 531 D</b>	<b>11</b>
<b>Solution system</b>	<b>13</b>
<b>Squeegee system</b>	<b>15</b>
<b>Brush system - BA 451 - BA 531</b>	<b>17</b>
<b>Brush system - BA 451 D - BA 531 D</b>	<b>19</b>
<b>Accessories brushes</b>	<b>21</b>
<b>Control panel system - BA 451 - 531</b>	<b>23</b>
<b>Control panel system - BA 451 D - 531 D</b>	<b>25</b>
<b>Electrical components - BA 451 - 531</b>	<b>27</b>
<b>Electrical components - BA 451 D - 531 D</b>	<b>29</b>
<b>Accessories Extra pressure-Splash guards</b>	<b>31</b>
<b>Accessories Battery Charger</b>	<b>33</b>
<b>Accessories Ecoflex system</b>	<b>35</b>
<b>Wiring diagram - BA 451 - 531</b>	<b>37</b>
<b>Wiring diagram - BA 451 D - 531 D</b>	<b>39</b>
<b>Recommended spare parts 1</b>	<b>41</b>
<b>Recommended spare parts 2</b>	<b>43</b>
<b>Optionals</b>	<b>45</b>
<b>Wiring diagram - BA 451 D - 531 D REV.C</b>	<b>48</b>

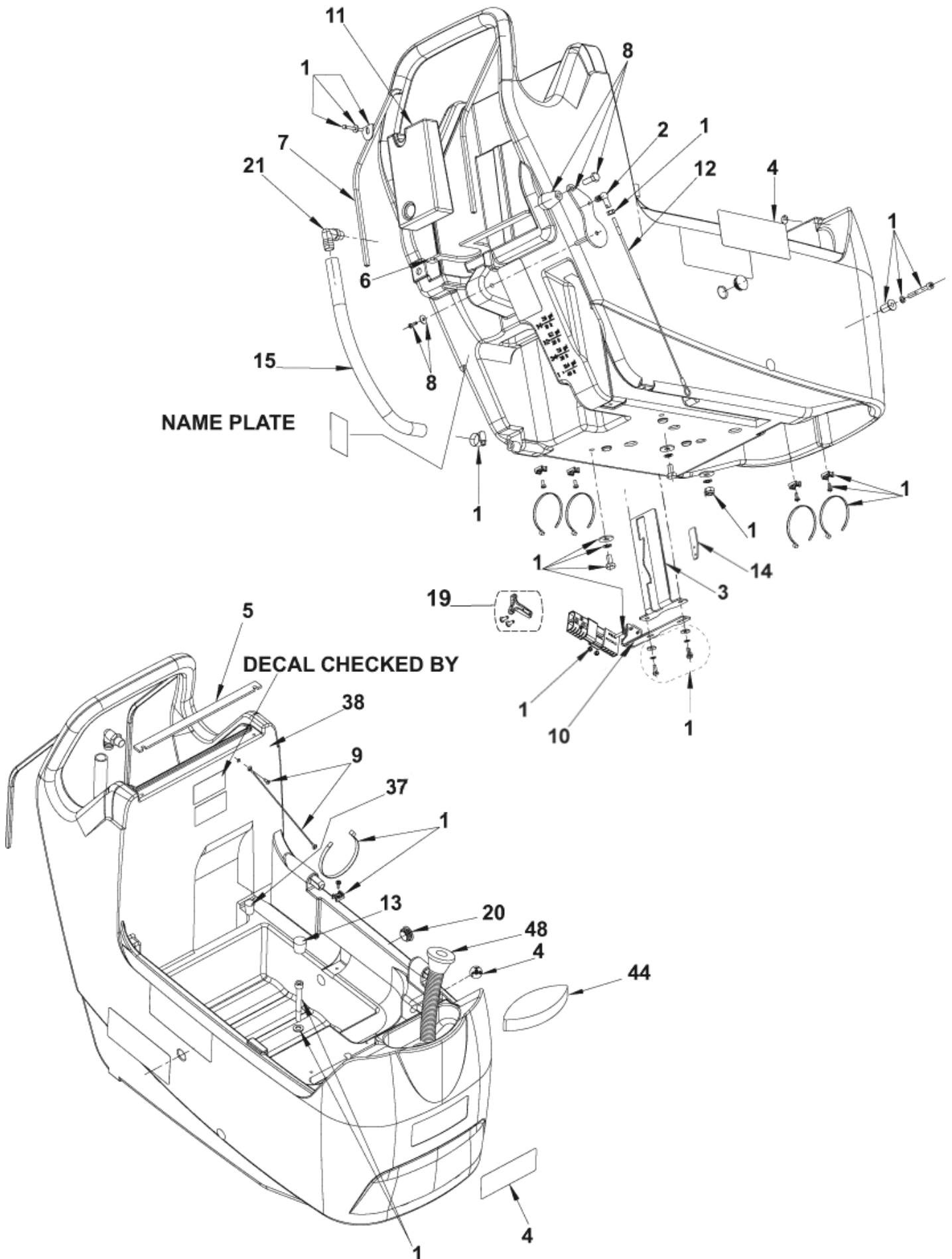
# Solution tank

BA451/BA451D/BA531/BA 531D

01-03-2015

Part List ID  
E18315

3



# Solution tank

BA451/BA451D/BA531/BA 531D

01-03-2015

Part List ID

E18315

4

Pos	Part no.	Qty	Description	
1	9098265000	1	HARDWARE SOLUTION TANK KIT	
3	909 6550 000	1	SUPPORT. PEDAL	
4	9097771000	1	DECALS BA 451/531 KIT	
5	909 6596 000	1	GASKET	
6	909 6597 000	1	GASKET	
7	909 6892 000	2	GASKET ADHESIVE L.960MM	
8	9097630000	1	HARDWARE SQU.LEVER FIXING KIT	
9	909 6874 000	1	CABLE TANK KIT	
10	909 6649 000	1	BRACKET CONNECTOR SUPPORT	
11	909 6841 000	1	WEIGHT	
12	9098673000	1	CABLE SQUEEGEE KIT	TSB IT 2010-053 - INST. INSTR. 9098672000
13	909 6673 000	1	CAP BLACK BP6	
14	9096999000	1	PLATE PEDAL BRACKET	ONLY FOR BA 531 D J
15	909 6681 000	1	HOSE CLEAN WATER	
19	1464116000	1	HANDLE RED PLASTIC SB 120	
20	L08812457	2	CAP TANK	
37	909 6236 000	1	CAP BLACK	
38	909 6320 000	1	TANK SOLUTION 35 LT	
44	909 6650 000	1	SPONGE F SOLUTION TANK INLET	
48	9097290000	1	HOSE FILLING	OPTION

POSITION 12 9098673000 includes also position 2.

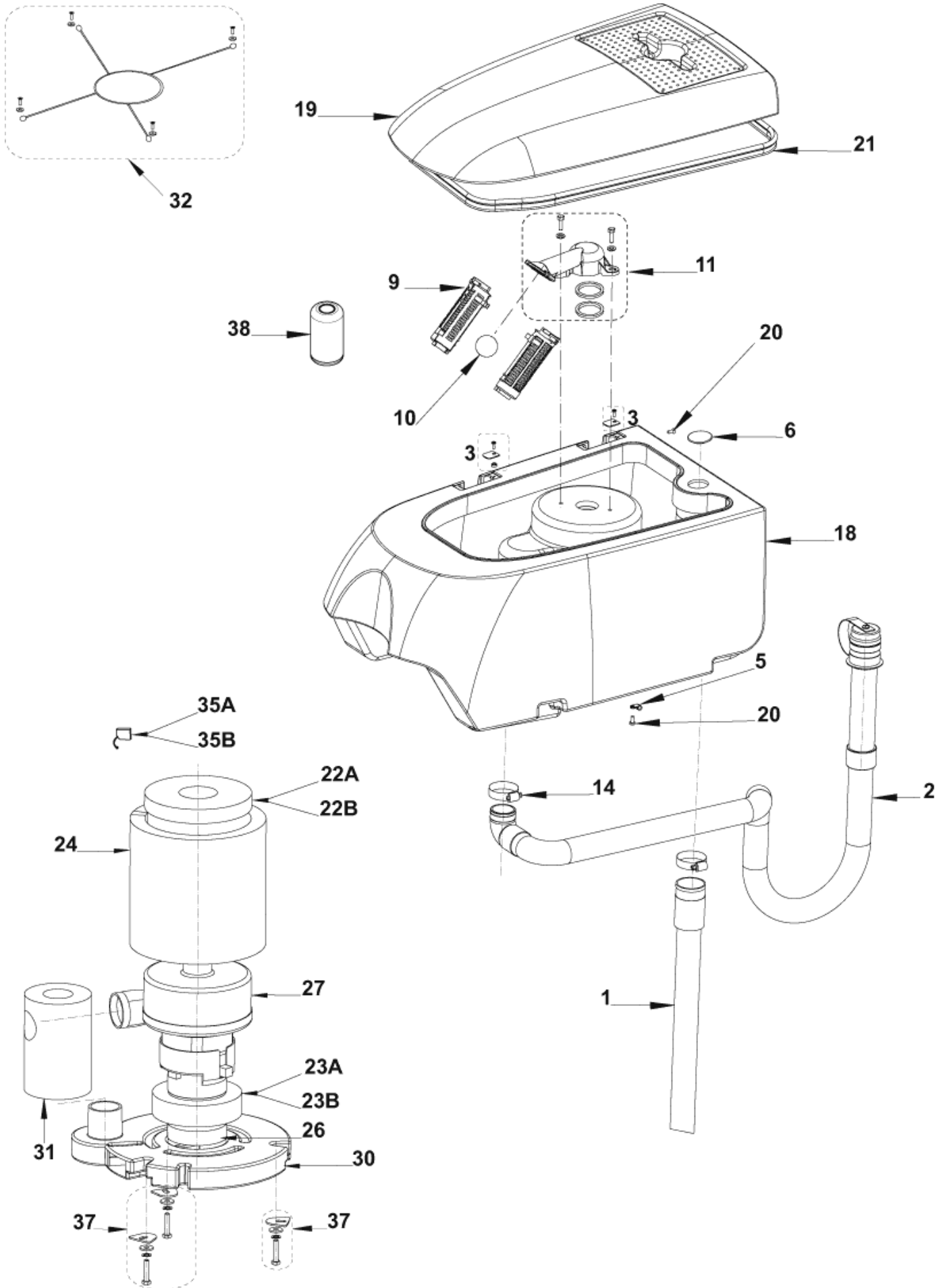
# Recovery tank

BA451/BA451D/BA531/BA 531D

01-03-2015

Part List ID  
E18319

5



# Recovery tank

BA451/BA451D/BA531/BA 531D

01-03-2015

Part List ID

E18319

6

Pos	Part no.	Qty	Description	
0	909 6876 000	1	HARDWARE CAGE SUP.FIXING KIT	FOR OLD CAGE SUPPORT
0	9098853000	1	ELBOW 90 SUCT.HOSE KIT RAL7001	OPTIONAL
1	9099852000	1	HOSE SQUEEGEE VACUUM PKD	
2	9099165000	1	HOSE DRAIN RAL 7001	
3	9097654000	1	TANK FIXING KIT	
5	L08603845	1	CLAMP.CABLE	
6	909 6899 000	1	CAP TANK	
9	L08812259	2	CAGE FLOAT HALF	
10	L08812373	1	BALL FLOATING	
11	9097681000	1	CAGE FLOAT HOLDER KIT	TSB IT 2008-009 - INST.INSTR.9097680000
14	145 0543 000	2	CLAMP 14/32-52	
18	909 6321 000	1	TANK RECOVERY 35 LT	
19	909 6322 000	1	COVER.TANK 35 LT	
20	909 6337 000	2	SCREW M5X12 UNI7687	
21	909 6901 000	1	GASKET BULB RUBBER L.1640MM	
24	909 6491 000	1	PANEL ACOUSTIC INSULATION	
26	909 6672 000	1	FILTER	
27	9099401000	1	MOTOR VACUUM KIT	
30	909 6051 000	1	COVER.VACUUM MOTOR	
31	909 6442 000	1	PIPE.ACOUSTIC INSULATION	
32	909 6734 000	1	RUBBER BAND HOLDER KIT	OPTIONAL
37	909 6877 000	1	HARDWARE MOTOR FIXING KIT	
38	909 5065 000	1	FILTER ANTIFOAMING	TSB IT 2008-002 - OPTIONAL
22A	9096918000	1	GASKET VACUUM MOTOR	
22B	9098057000	1	GASKET VACUUM MOTOR	
23A	909 6490 000	1	GASKET VACUUM MOTOR	
23B	9097555000	1	GASKET VACUUM MOTOR	
35A	909 5371 000	2	CARBON BRUSH	
35B	9098231000	1	CARBON BRUSHES KIT 2 PCS	

A: FOR MOTOR 9099401000 (AMETEK)

B: FOR MOTOR 9098062000 (VIPER)

# Chassis system

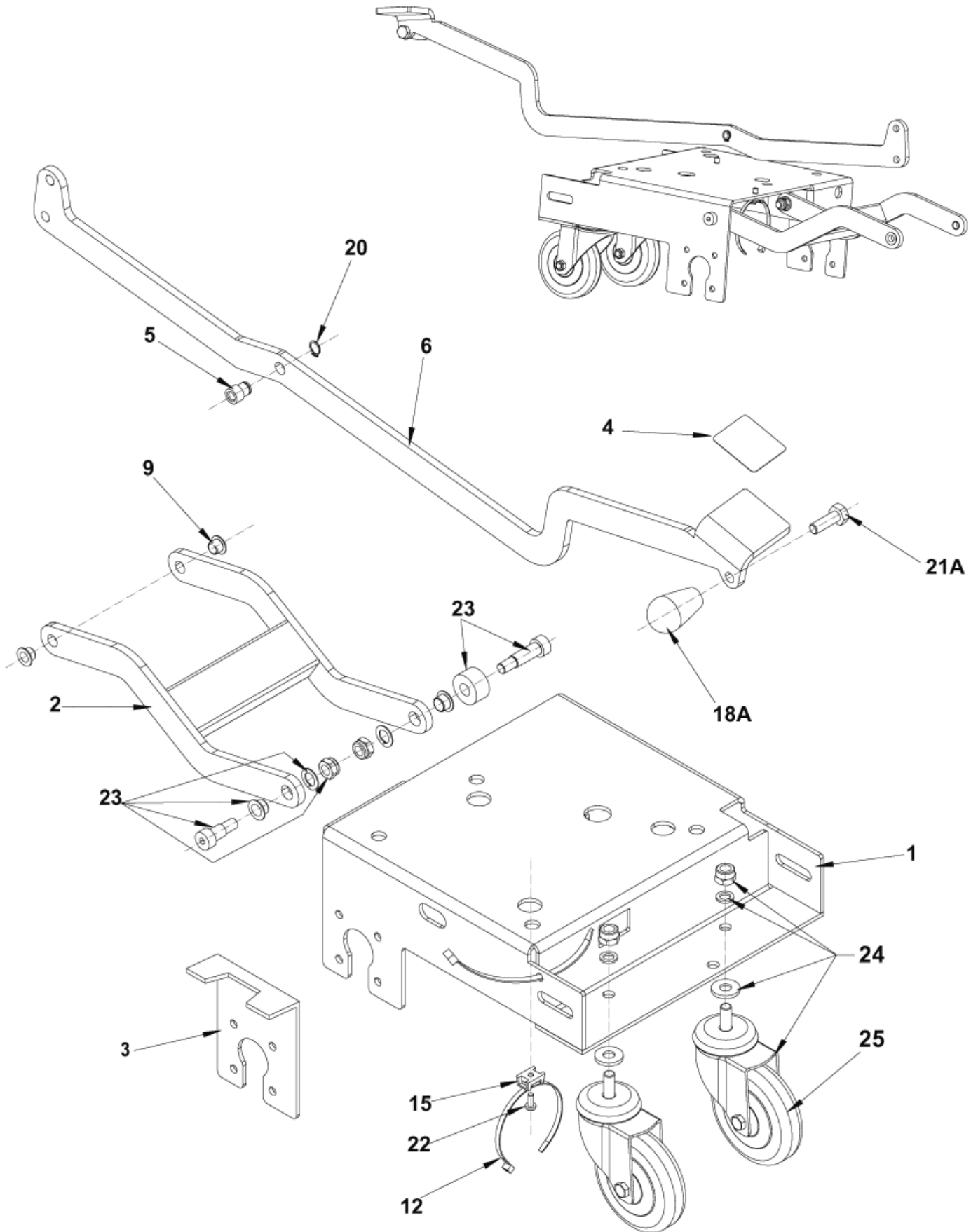
BA451/BA451D/BA531/BA 531D

01-03-2015

Part List ID

E183111

7



# Chassis system

BA451/BA451D/BA531/BA 531D

01-03-2015

Part List ID

E183111

8

Pos	Part no.	Qty	Description	
0	910000335	1	STRAP ANTISTATIC KIT	OPT INST.INSTR.910000337
1	909 6482 000	1	CHASSIS	
2	909 6486 000	1	LEVER BRUSH DECK LIFTING	
3	9098587000	1	SUPPORT LEFT FOR WATERTANK KIT	INST.INSTR.9098588000 ONLY FOR DRIVE VERSIONS
4	909 6539 000	1	MAT.ANTISKID	
5	909 6540 000	1	BUSH FLANGED	
6	909 6549 000	1	PEDAL. BRUSH LIFTING	
9	909 6594 000	3	BEARING FLANGE IGLIDUR GFM-1012-09	
12	145 0524 000	2	TIE CABLE 4.8x200 BLACK	
15	909 6595 000	1	HOLDER.FLAT TIE	
20	33006051	1	RING D 12 UNI7435	
22	909 6337 000	1	SCREW M5X12 UNI7687	
23	909 6878 000	1	HARDWARE CHAS.FIXING KIT	
24	9098619000	2	WHEEL CASTOR D.100 PU SS KIT	OPTIONAL
24	9099028000	2	WHEEL CASTOR WITH HARDWARE KIT	INST. INSTR. 9099245000
25	9099014000	2	WHEEL CASTOR CHROMATE	
18A	909 6621 000	1	KNOB	FOR SCRUBBER WITH DRIVE
21A	33004010	1	SCREW M10X30 HEX HD F/THD ISO4017	

A: ONLY FOR BA 451 D / BA 531 D

B: ONLY FOR BA 451 / BA 531



# Wheels and traction

BA451/BA451D/BA531/BA 531D

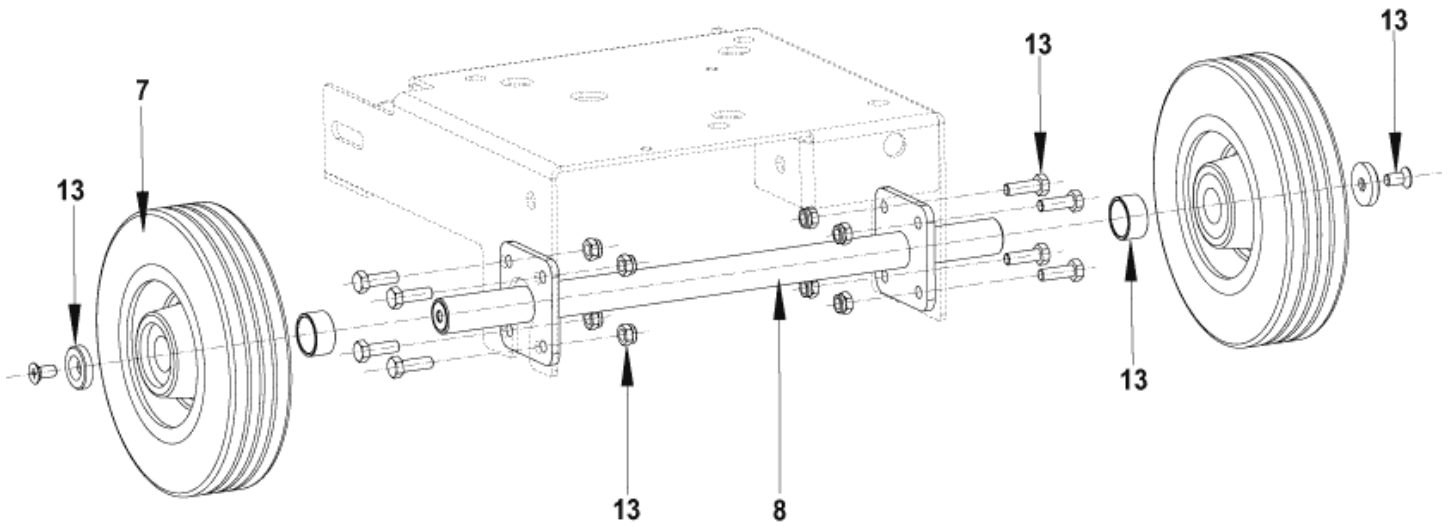
01-03-2015

Part List ID

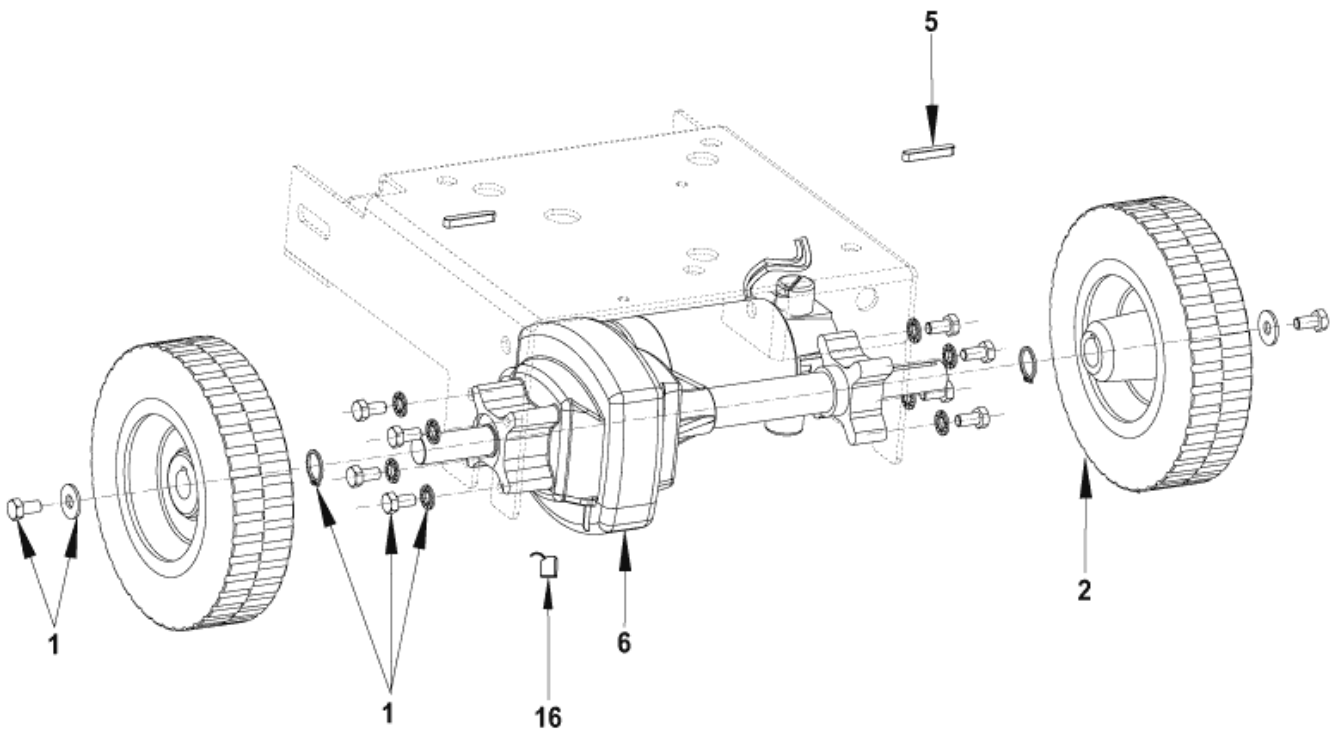
E183113

9

## SENZA TRAZIONE / WITHOUT TRACTION ( BA 451 / BA 531 )



## CON TRAZIONE / WITH TRACTION ( BA 451 D / BA 531 D )



# Wheels and traction

BA451/BA451D/BA531/BA 531D

01-03-2015

Part List ID

E183113

10

Pos	Part no.	Qty	Description
1	9098298000	1	HARDWARE DRIVE WHEELS KIT
2	9097032000	2	WHEEL FRONT D.200 DRIVE <span style="float: right;">OPTION</span>
2	9099204000	2	WHEEL D.200X50
5	146 0769 000	2	KEY 6X6X40 UNI6604A
6	909 6548 000	1	MOTOR DRIVE 200W 24V
7	9097167000	2	WHEEL FRONT D.200 65SH <span style="float: right;">OPTION</span>
7	9099743000	1	WHEELS FRONT D.200 KIT <span style="float: right;">Contains 2 wheels</span>
8	909 6508 000	1	SHAFT WHEELS
13	9098299000	1	HARDWARE WHEELS KIT
16	145 5124 000	2	CARBON BRUSH

POSITION 2 9097032000 OPTION

POSITION 7 9097167000 OPTION

# Handle assembly - BA 451 D - 531 D

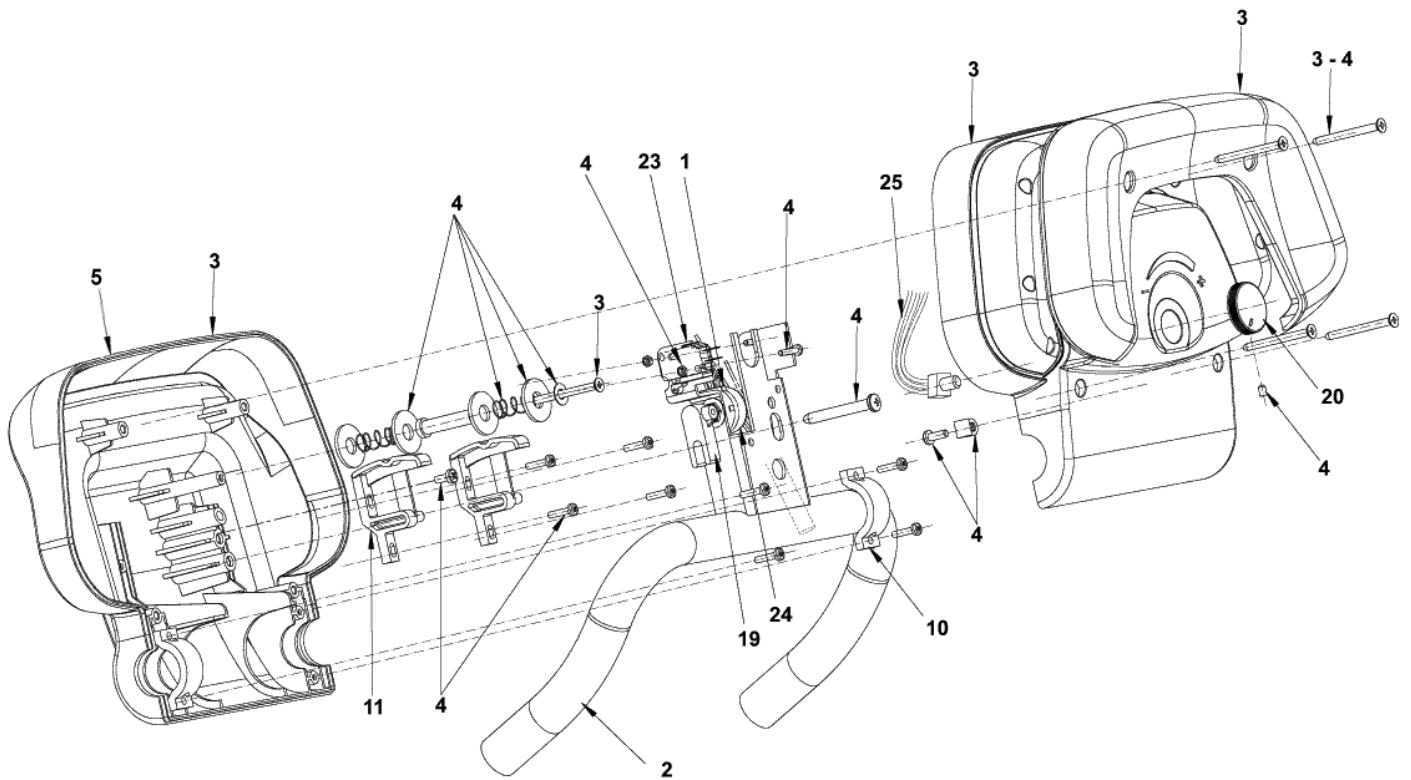
BA451/BA451D/BA531/BA 531D

01-03-2015

Part List ID

E183115

11



# Handle assembly - BA 451 D - 531 D

BA451/BA451D/BA531/BA 531D

01-03-2015

Part List ID

E183115

12

Pos	Part no.	Qty	Description
1	909 6578 000	1	HARNESS HANDLE BAR DRIVE
2	909 6653 000	1	HANDLE BAR
3	9097622000	1	HOUSING SWITCH UPPER/LOWER KIT
4	9098300000	1	HARDWARE HANDLE BAR COMPLETE KIT
5	9098792000	1	HOUSING SWITCH LOWER KIT TSB IT 2010-060
10	L08812279	2	COLLAR
11	L08812282	2	CAM HANDLE MICROSWITCH
19	909 6038 000	1	CONNECTING ROD F POTENTIOMETER
20	909 6471 000	1	KNOB. POTENTIOMETER
23	909 6677 000	1	MICROSWITCH
24	9098814000	1	POTENTIOMETER 5K 40
25	909 6544 000	1	HARNESS POTENTIOMETER

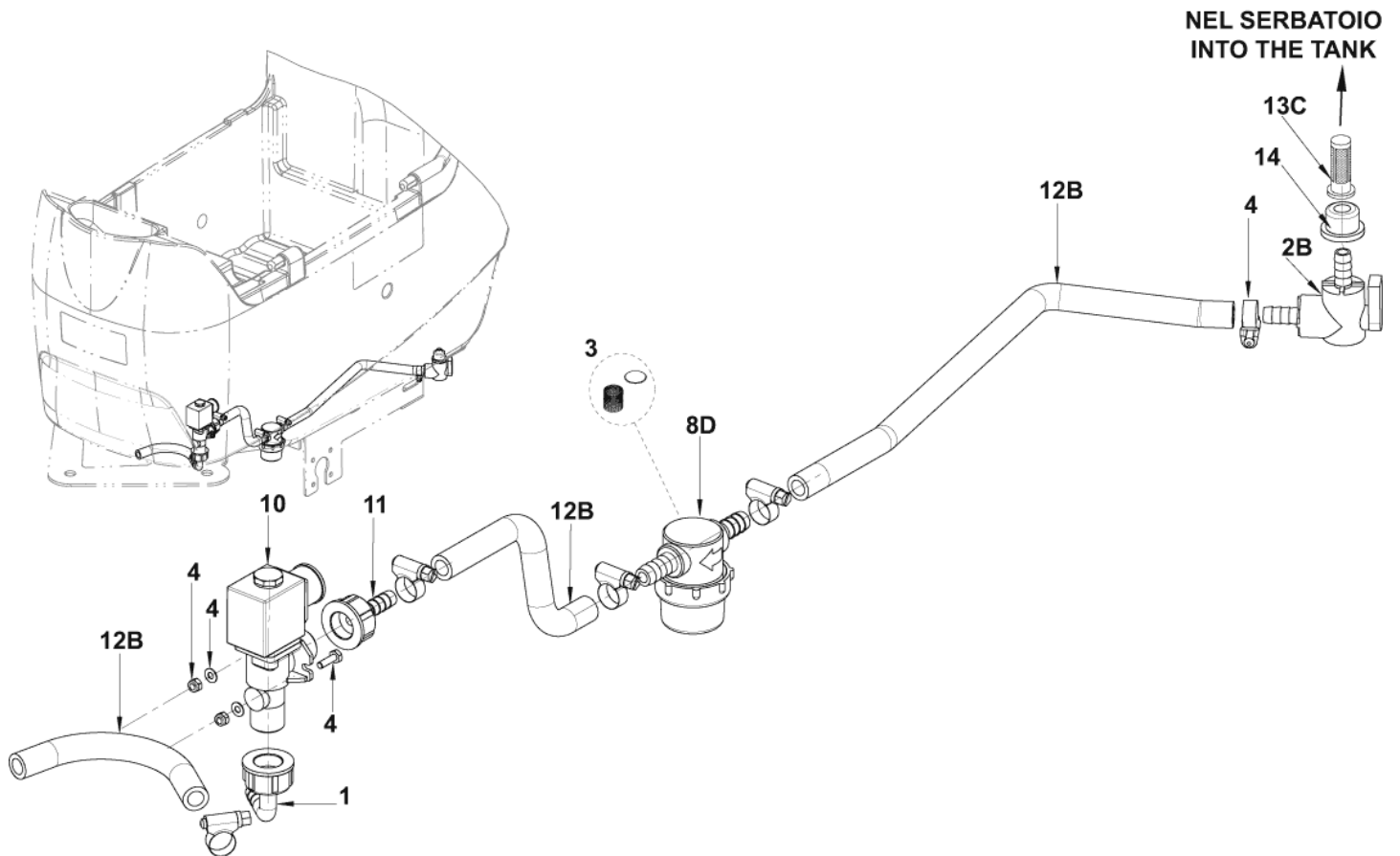
# Solution system

BA451/BA451D/BA531/BA 531D

01-03-2015

Part List ID  
E183117

13



# Solution system

BA451/BA451D/BA531/BA 531D

01-03-2015

Part List ID  
E183117

14

Pos	Part no.	Qty	Description	
1	9098777000	1	HOLDER RUBBER 90 F HOSE D.10 PKD	
3	L08603893	1	NET FILTER WITH GASKET KIT	
4	9098301000	1	HARDWARE SOLUTION SYSTEM KIT	
0B	909 6896 000	1	HOSES SOLENOID VALVE KIT	
10	909 6555 000	1	SOLENOID VALVE 24V	
11	9100000106	1	HOLDER RUBBER 1/2 FEMALE KIT	
14	909 5286 000	1	GASKET	
2B	9096994000	1	VALVE ELBOW	
8D	9097166000	1	FILTER COMPLETE KIT	
12B	9096995000	1	VALVE BALL ELBOW W/HOSES KIT	
13C	9096916000	1	FILTER SOLUTION TANK	OPTION

# Squeegee system

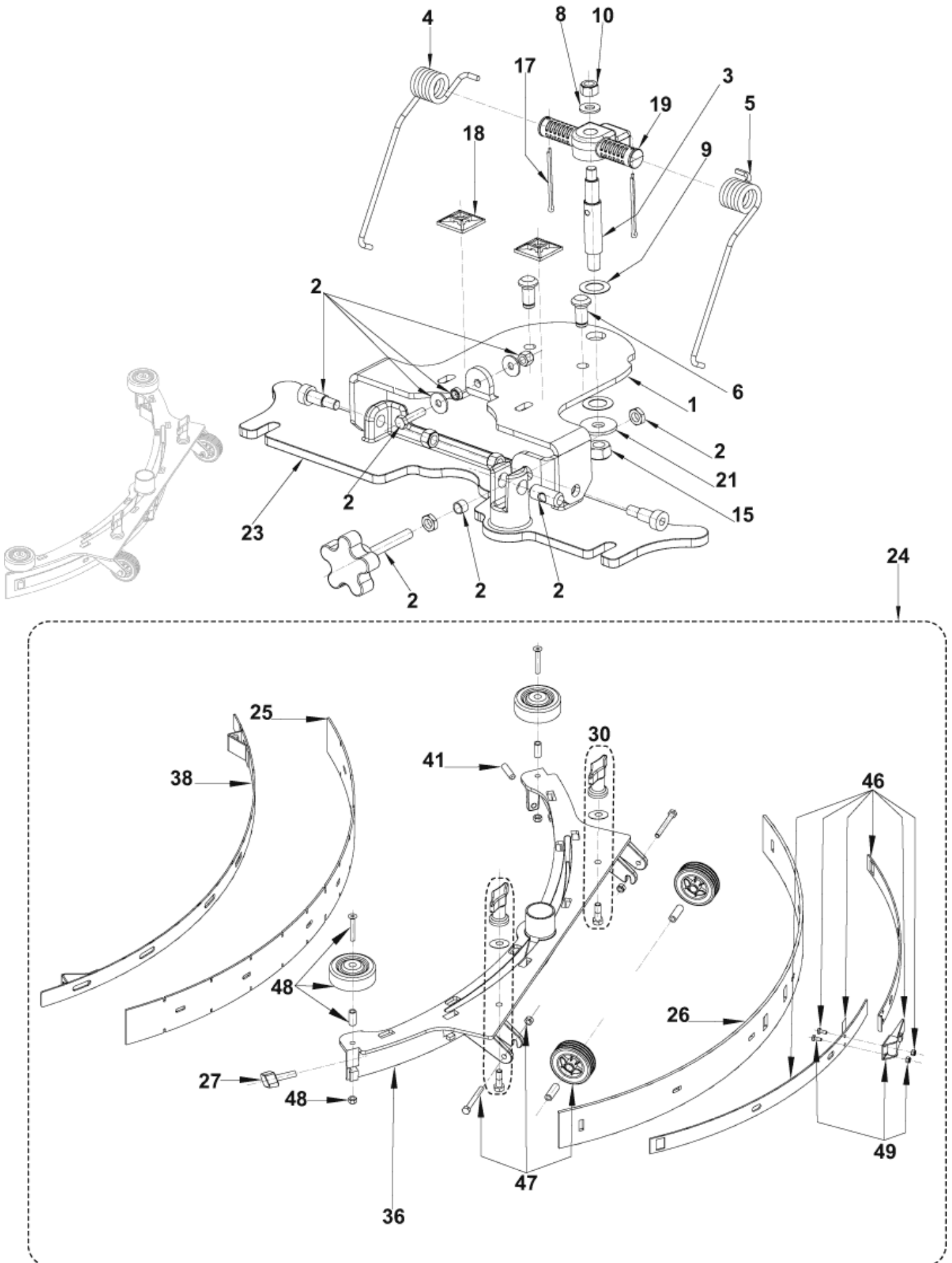
BA451/BA451D/BA531/BA 531D

01-03-2015

Part List ID

E183119

15



# Squeegee system

## BA451/BA451D/BA531/BA 531D

01-03-2015

Part List ID  
E183119

16

Pos	Part no.	Qty	Description	
0	9097548000	1	WASHERS NYLON SQUEEGEE SUPPORT KIT	TSB IT 2007-031
0	9100000279	1	BLADES NON MARKING 740MM/29 KIT	INCL.POS.: 25-26
1	909 6494 000	1	BRACKET SQUEEGEE SUPPORT	
2	909 6885 000	1	HARDWARE SQUEEGEE FIXING KIT	
3	909 6497 000	1	PIN SQUEEGEE	
4	909 6537 000	1	SPRING SQUEEGEE PUSHING DX	
5	909 6538 000	1	SPRING SQUEEGEE PUSHING SX	
6	909 6543 000	2	PIN. SQUEEGEE FIXING	
8	33005915	1	WASHER M8 UNI6592	
9	L08238300	2	WASHER 15X25 NYLON UNI6592	
10	33005607	3	NUT SELF L. M8 UNI7474	
15	33005608	1	NUT SELF L. M10 UNI7474	
17	33005758	2	PIN SPLIT 2x32 UNI1336	
18	909 6635 000	2	HOLDER.FLAT TIE	
19	909 6052 000	1	SUPPORT SQUEEGEE SPRING	
21	L08604251	1	WASHER 10X30 UNI6592	
23	909 6045 000	1	SUPPORT. SQUEEGEE	
24	909 6851 000	1	SQUEEGEE CPL ALU 760MM/30 KIT	
27	9100000791	1	KNOB M8X30 THD STUD SS PKD	
30	9097637000	2	SQUEEGEE FIXING KIT	
36	909 6044 000	1	WELDMENT.SQUEEGEE TOOL	
38	909 6055 000	1	STRAP.SQUEEGEE FRONT	
41	909 6600 000	1	SCREW GRUB M8X30 UNI5929 SS	
46	909 6882 000	1	HARDWARE SQU.BLADE FIXING KIT	
47	909 6883 000	2	WHEELS SQUEEGEE 60X20MM KIT	
48	909 6884 000	2	ROLLER BUMPER SQUEEG.KIT	
49	909 6394 000	1	LATCH SQUEEGEE KIT	

POSITION 25-26: 909 6483 000 - 909 6484 000 INCLUDED IN THE KIT 909 6860 000



# Brush system - BA 451 - BA 531

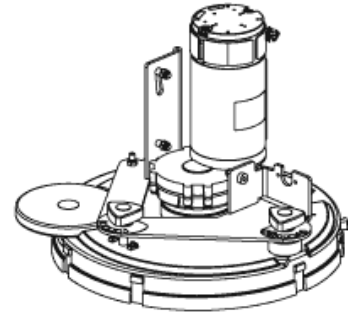
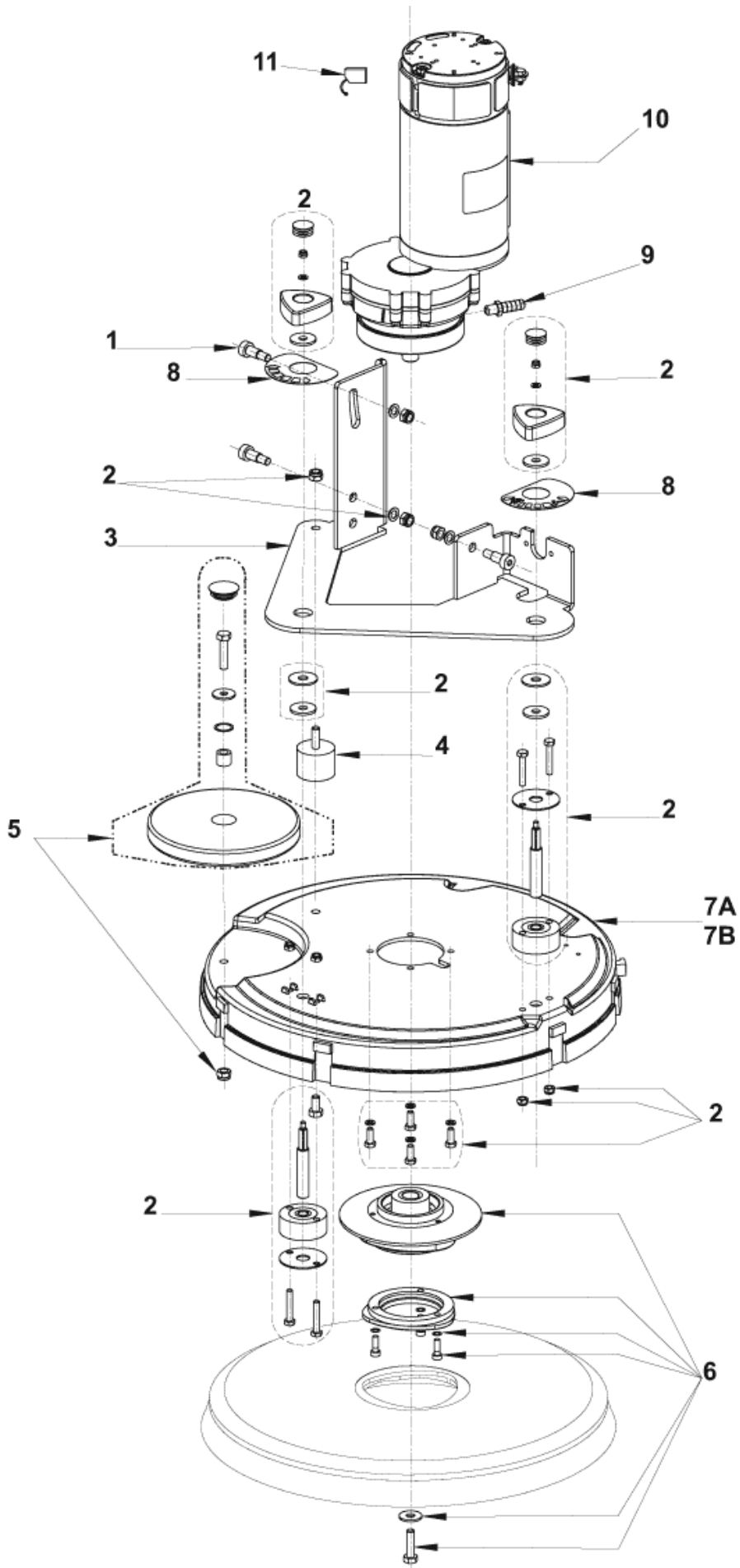
BA451/BA451D/BA531/BA 531D

01-03-2015

Part List ID

E183123

17



# Brush system - BA 451 - BA 531

BA451/BA451D/BA531/BA 531D

01-03-2015

Part List ID

E183123

18

Pos	Part no.	Qty	Description	
0	9097599000	1	PROTECTION MOTOR KIT	TSB IT 2008-014 - OPTION- INST.INSTR.909760000 FOR
0	L08812480	1	HUB.BRUSH	
1	909 6495 000	3	SCREW 10X16 M8 ISO7379 12.9 GEOMET 320 A	
2	9099419000	1	HARDWARE BRUSH DECK SYST.KIT	
3	909 6485 000	1	PLATE DECK BRUSH HOLDER	
4	910000868	1	VIBRATION DAMPING M8 60SH 2 PCS SET	
5	909 6887 000	1	ROLLER BUMPER KIT	
6	9097093000	1	HOLDER POLYGONAL KIT	
8	9097771000	1	DECALS BA 451/531 KIT	
9	L08601624	1	HOLDER RUBBER 1/4 D.10	
10	9098308000	1	REDUCTION GEARMOTOR 450W 24V	
11	909 5380 000	1	CARBON BRUSHES W/HOLDER KIT 4PCS	FOR REDUCTION GEARMOTOR 909 6546 000 (LEROY SOMER)
11	9098376000	1	CARBON BRUSHES KIT 4 PCS	FOR REDUCTION GEARMOTOR 9098308000 (AMER)
11	9098674000	1	CARBON BRUSHES KIT 4 PCS	FOR REDUCTION GEARMOTOR 9098352000 (VIPER)
7A	909 6043 000	1	DECK BRUSH	450MM/17"
7B	909 6042 000	1	DECK BRUSH	530MM/20"

# Brush system - BA 451 D - BA 531 D

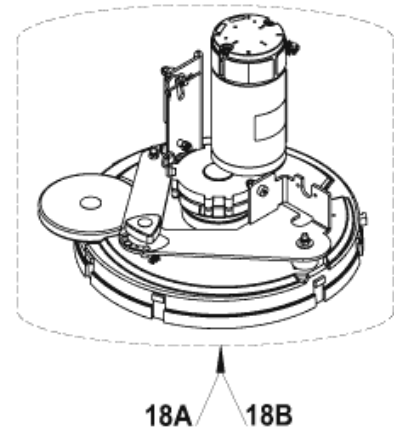
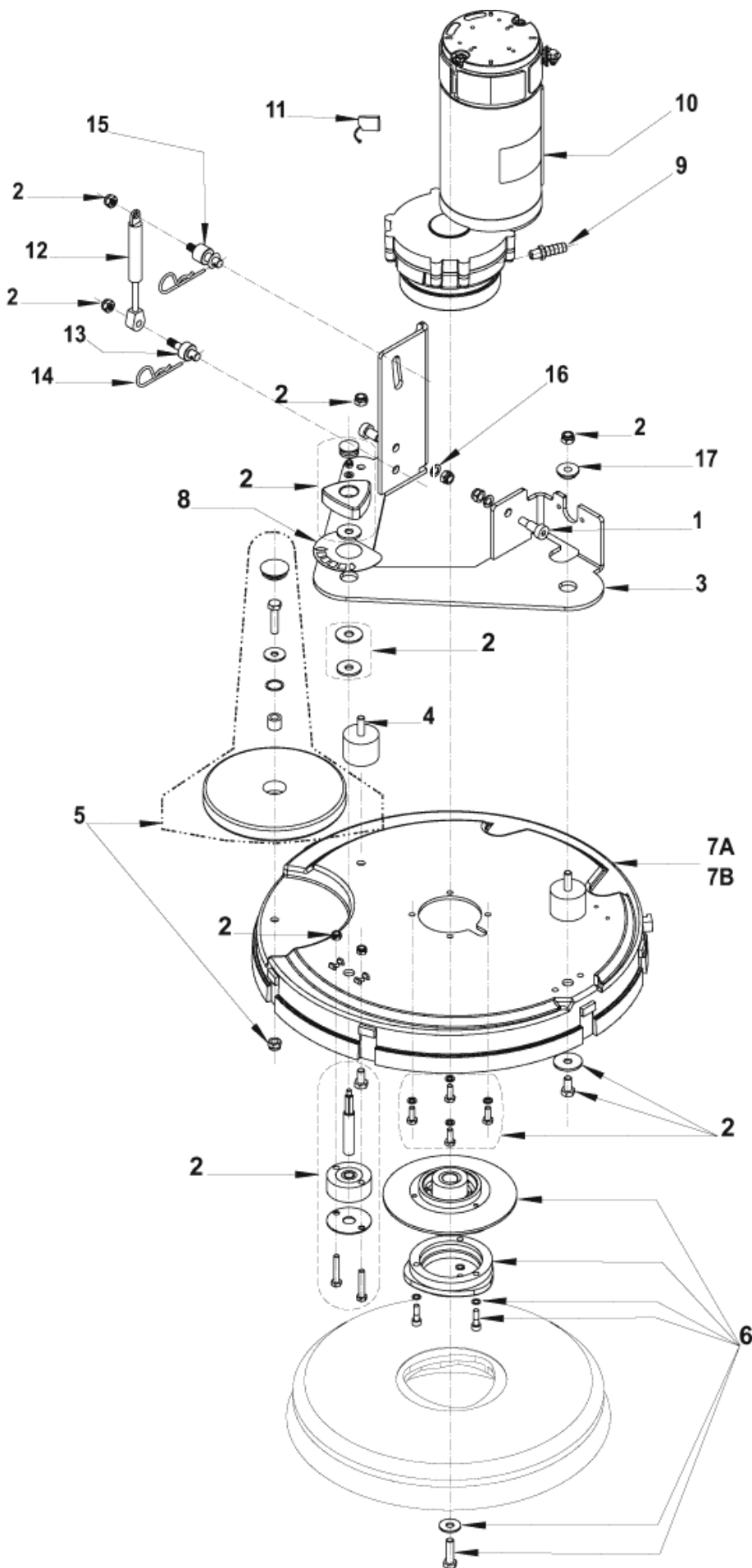
BA451/BA451D/BA531/BA 531D

01-03-2015

Part List ID

E183127

19



# Brush system - BA 451 D - BA 531 D

BA451/BA451D/BA531/BA 531D

01-03-2015

Part List ID

E183127

20

Pos	Part no.	Qty	Description	
0	9097599000	1	PROTECTION MOTOR KIT	TSB IT 2008-014 - OPTION - INST.INSTR.909760000 FO
0	L08812480	1	HUB.BRUSH	
1	909 6495 000	3	SCREW 10X16 M8 ISO7379 12.9 GEOMET 320 A	
2	9099419000	1	HARDWARE BRUSH DECK SYST.KIT	
3	909 6485 000	1	PLATE DECK BRUSH HOLDER	
4	910000868	1	VIBRATION DAMPING M8 60SH 2 PCS SET	
5	909 6887 000	1	ROLLER BUMPER KIT	
6	9097093000	1	HOLDER POLYGONAL KIT	
8	9097771000	1	DECALS BA 451/531 KIT	
9	L08601624	1	HOLDER RUBBER 1/4 D.10	
10	9098308000	1	REDUCTION GERMOTOR 450W 24V	STARTING FROM SERIAL NUMBER 111332741
11	909 5380 000	1	CARBON BRUSHES W/HOLDER KIT 4PCS	FOR REDUCTION GERMOTOR 909 6546 000 (LEROY SOMER)
11	9098376000	1	CARBON BRUSHES KIT 4 PCS	FOR REDUCTION GERMOTOR 9098308000 (AMER)
12	909 6514 000	1	SPRING GAS	
13	909 6516 000	1	PIN LOWER	
14	145 8564 000	2	PIN SPLIT 3X60 UNI8833	
15	909 6515 000	1	PIN UPPER	
16	33005842	2	WASHER M8 UNI1751B	
17	909 6513 000	1	BUSH FLANGED	
7A	909 6043 000	1	DECK BRUSH	
7B	909 6042 000	1	DECK BRUSH	
18A	909 6852 000	1	DECK BRUSH 450MM/18 KIT	
18B	909 6853 000	1	DECK BRUSH 530MM/21 KIT	

# Accessories brushes

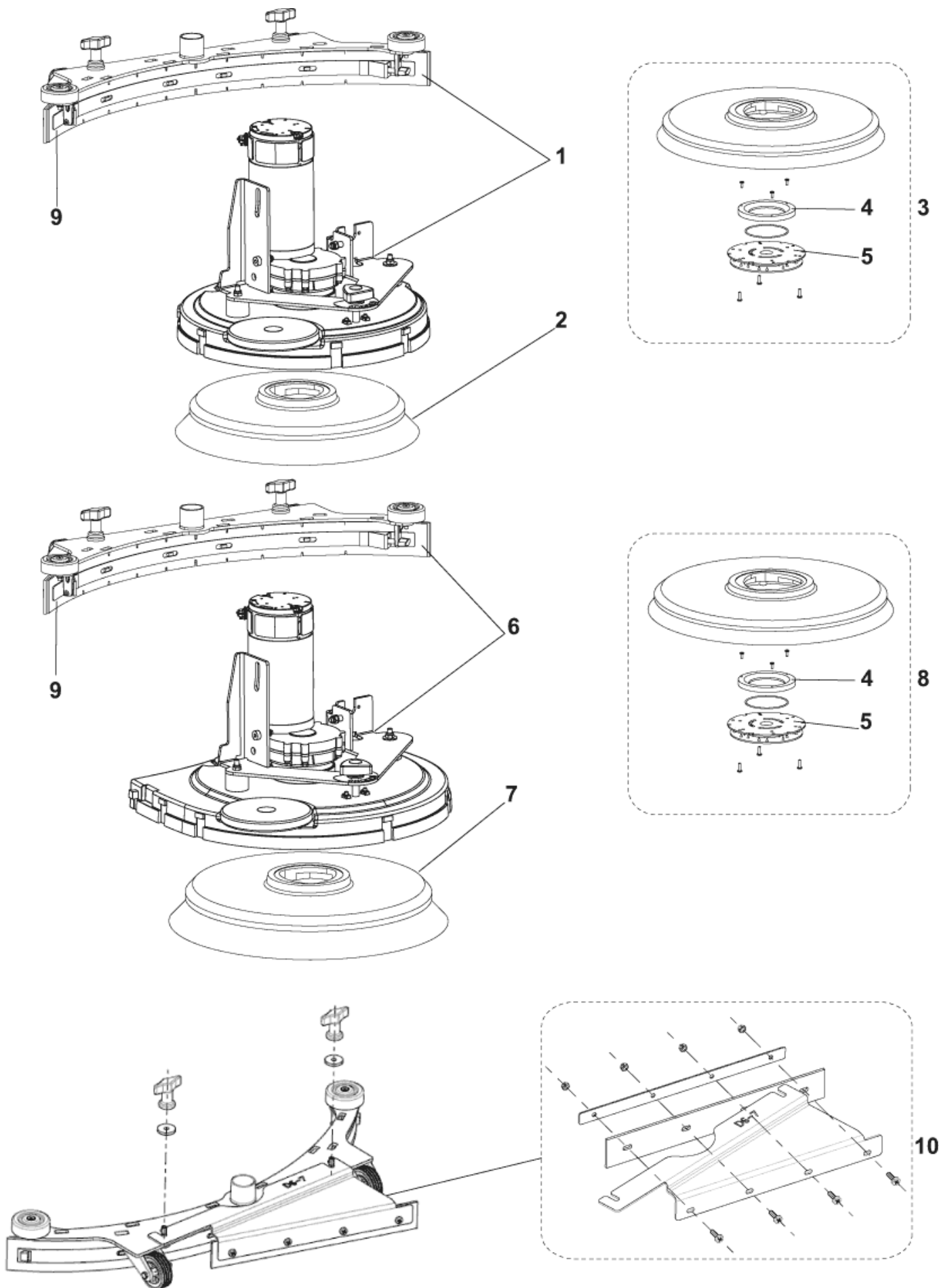
BA451/BA451D/BA531/BA 531D

01-03-2015

Part List ID

E183138

21



# Accessories brushes

BA451/BA451D/BA531/BA 531D

01-03-2015

Part List ID

E183138

22

Pos	Part no.	Qty	Description	
0	909 6858 000	1	BLADE SQUEEGEE 740MM 29 PU KIT	
0	9100000279	1	BLADES NON MARKING 740MM/29 KIT	
1	909 6847 000	1	DECK BRUSH 450MM/18 KIT W	
2	L08837020	1	BRUSH DISC 450MM 17.5 PROLENE	
2	L08837021	1	BRUSH DISC 450MM 17.5 PROLITE	
2	L08837022	1	BRUSH UNION MIX 450MM	COMPLEXITY REDUCTION
2	L08837023	1	BRUSH MIDLITE GRIT	COMPLEXITY REDUCTION
2	L08837024	1	BRUSH MID GRIT 240 450MM	COMPLEXITY REDUCTION
3	9099668000	1	PAD HOLDER FLAT 17 432MM	
3	L08837017	1	PAD HOLDER 450MM	
4	L08603966	1	RING NYLON	
5	56505195	1	PAD RETAINER	
6	909 6848 000	1	DECK BRUSH 530MM/21 KIT WITH	
7	L08837025	1	BRUSH DISC 530MM 21 PROLENE	
7	L08837026	1	BRUSH DISC 530MM 21 PROLITE	
7	L08837027	1	BRUSH DISC 530MM 21 UNION MIX	
7	L08837028	1	BRUSH DISC 530MM 21 MIDLITE GRIT 180	
7	L08837029	1	BRUSH DISC 530MM 21 MID GRIT 240	
7	L08837065	1	BRUSH DISC 530MM 21 MAGNA GRIT 46	
7	L08837066	1	BRUSH DISC 530MM 21 DYNA GRIT 80	
7	L08837067	1	BRUSH DISC 530MM 21 AGLITE GRIT 500	
8	9099671000	1	PAD HOLDER FLAT 20 508MM	
8	L08837018	1	PAD HOLDER 530MM	
9	909 6851 000	1	SQUEEGEE CPL ALU 760MM/30 KIT	
9	L08603878	1	SQUEEGEE CPL KIT 30	
10	9098343000	1	THIRD BLADE SQUEEGEE KIT D6/7	OPTION - INST.INSTR. 9098337000

# Control panel system - BA 451 - 531

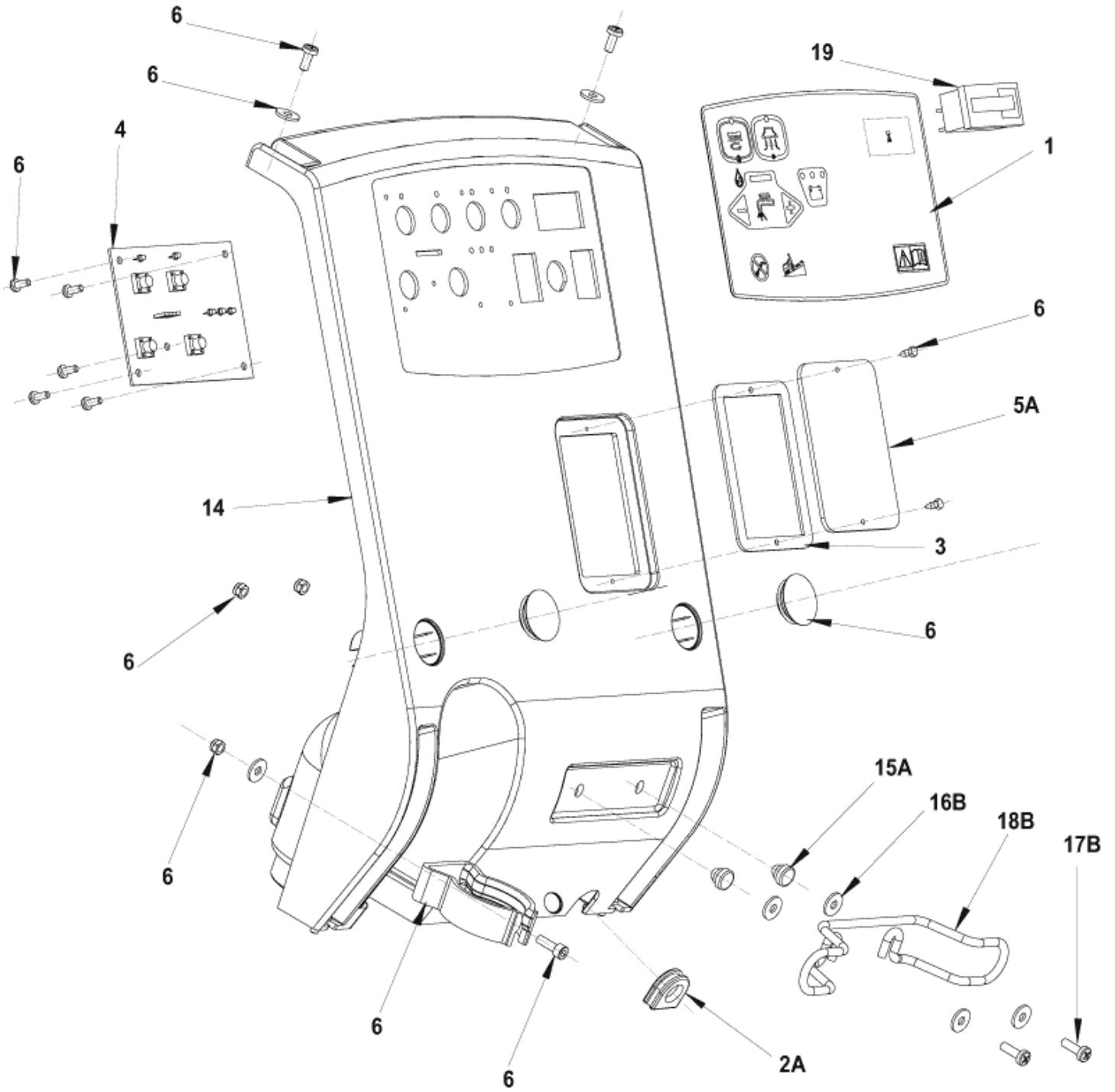
BA451/BA451D/BA531/BA 531D

01-03-2015

Part List ID

E183141

23



# Control panel system - BA 451 - 531

BA451/BA451D/BA531/BA 531D

01-03-2015

Part List ID

E183141

24

Pos	Part no.	Qty	Description
0	145 8368 000	1	FUSE BLADE 3A
1	9098635000	1	DECAL CONTROL PANEL TSB IT 2009-025
3	909 6545 000	1	GASKET
4	909 6552 000	1	CARD.ELECTRONIC BEFORE SERIAL NUMBER 072115094
4	9100000174	1	CARD ELECTRONIC FUNCTIONS PKD STARTING FROM SERIAL NUMBER 072115094
6	9098302000	1	HARDWARE CONTROL PANEL KIT
14	9097649000	1	COVER CONTROL PANEL KIT
19	9096951000	1	COUNTER HOUR 24V KIT OPTION - INST-INSTR.9096952000
2A	909 6542 000	1	GROMMET
5A	909 6655 000	1	COVER F INSPECTION PLATE
15A	909 6553 000	2	FEET RUBBER
16B	145 1261 000	4	WASHER 5X15X1.5 UNI6593
17B	146 2090 000	2	SCREW M5X16 UNI7687
18B	1466317000	1	SUPPORT CABLE KIT

A : ONLY VERSION WITHOUT BATTERY CHARGER ON BOARD

B : ONLY VERSION WITH BATTERY CHARGER ON BOARD



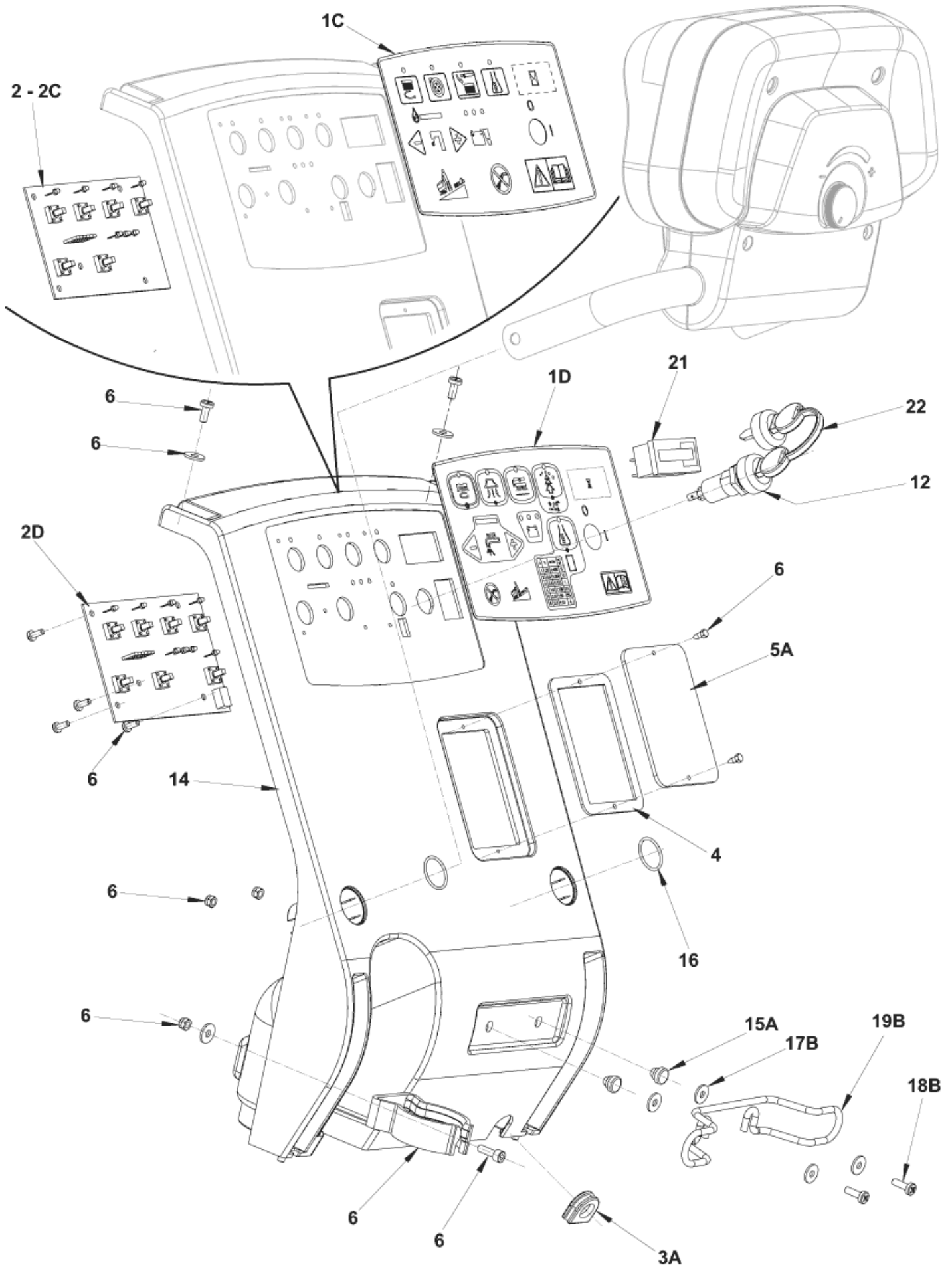
# Control panel system - BA 451 D - 531 D

BA451/BA451D/BA531/BA 531D

01-03-2015

Part List ID  
E183143

25



# Control panel system - BA 451 D - 531 D

BA451/BA451D/BA531/BA 531D

01-03-2015

Part List ID

E183143

26

Pos	Part no.	Qty	Description
0	145 8368 000	2	FUSE BLADE 3A
0	909 6678 000	1	FUSE 20A GLASS DELAYED
2	909 6499 000	1	CARD ELECTRONIC FUNCTIONS BEFORE S.NO.072014255
4	909 6545 000	1	GASKET
6	9098302000	1	HARDWARE CONTROL PANEL KIT
12	146 2888 000	1	SWITCH KEY WITH CAP
14	9098632000	1	COVER ELECTRIC COMPONENTS
16	909 6675 000	2	O-RING 1.78X21.95 -2087- NBR
1C	909 6057 000	1	DECAL CONTROL PANEL TSB IT 2009-025 - VALID TILL MAY 2010
1D	9098634000	1	DECAL CONTROL PANEL ECOFLEX STARTING FROM JUNE 2010
21	9096951000	1	COUNTER HOUR 24V KIT OPTION- INST.INSTR.9096952000
22	146 2887 000	1	KEY 2 PCS
2C	9100000175	1	CARD ELECTRONIC FUNCTIONS PKD FROM S.NO.072014255
2D	9100000179	1	CARD ELECTRONIC FUNCTIONS PKD STARTING FROM JUNE 2010
3A	909 6542 000	1	GROMMET
5A	909 6655 000	1	COVER F INSPECTION PLATE
15A	909 6553 000	2	FEET RUBBER
17B	145 1261 000	4	WASHER 5X15X1.5 UNI6593
18B	146 2090 000	2	SCREW M5X16 UNI7687
19B	1466317000	1	SUPPORT CABLE KIT

**Note:**

A : ONLY VERSION WITHOUT BATTERY CHARGER ON BOARD

B : ONLY VERSION WITH BATTERY CHARGER ON BOARD

# Electrical components - BA 451 - 531

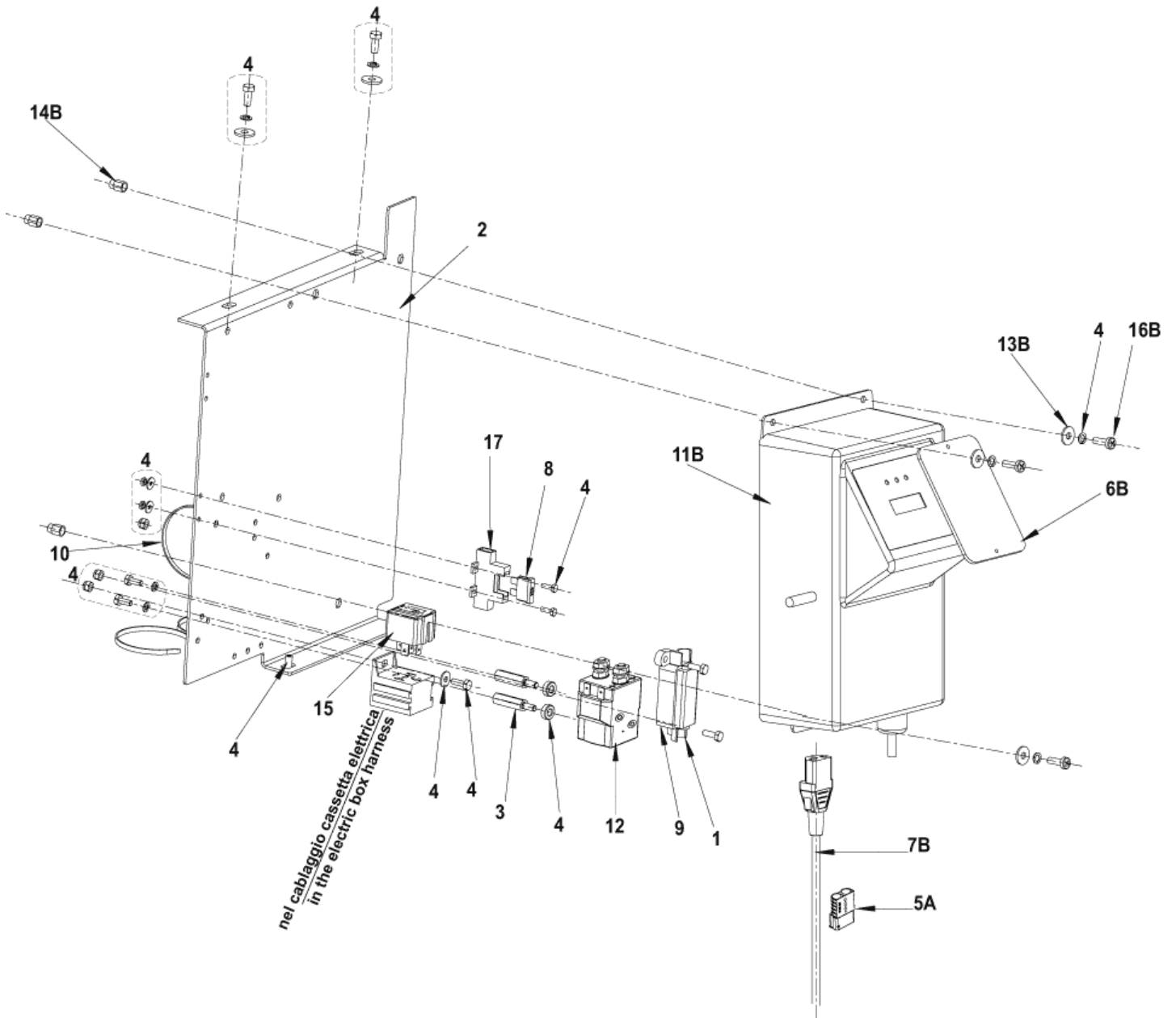
BA451/BA451D/BA531/BA 531D

01-03-2015

Part List ID

E183145

27



# Electrical components - BA 451 - 531

BA451/BA451D/BA531/BA 531D

01-03-2015

Part List ID  
E183145

28

Pos	Part no.	Qty	Description	
0	909 6616 000	1	HARNESS ELECTRIC BOX	before SN 070100309
0	909 6618 000	1	HARNESS BATTERY	
0	909 6840 000	1	HARNESS VACUUM MOTOR	
0	909 6844 000	1	HARNESS MACHINE	before SN 070100309
0	9096963000	1	HARNESS ELECTRIC BOX	starting from SN 070100309
0	9096971000	1	HARNESS MACHINE	starting from SN 070100309
0	9097590000	1	CABLE BATTERY INTERCONNECTION	
1	145 8046 000	1	HOLDER FUSE	
2	909 6498 000	1	SUPPORT ELECTRIC COMP.	
3	909 6676 000	2	SPACER M4 L25	
4	9098303000	1	HARDWARE ELECTRIC SYSTEM KIT	
8	145 8513 000	1	FUSE BLADE 30A UL	
9	145 3824 000	1	FUSE STRIP 40A	
10	145 1449 000	3	TIE CABLE 3.6x140 BLACK	
12	9097208000	1	SWITCH ELECTROMAGNETIC 24V	
15	909 6622 000	1	RELAY 24V 40A	
17	146 0660 000	2	HOLDER FUSE THERMOPL. UL 94-V0	
5A	9098762000	1	CONNECTOR 120A RED	
6B	909 5313 000	1	PLATE INSPECTION TRANSP.	
7B	909 5633 000	1	CABLE EXTENSION EU PLUG L.1000MM	
7B	909 5676 000	1	CABLE EXTENSION UK PLUG L.1000MM	
7B	9096914000	1	CABLE EXTENSION US PLUG L.1500MM	
11B	9098297000	1	CHARGER BATT. O/B 24V 13A 100-230V EU	
13B	33005912	3	WASHER M5 UNI6592	
14B	145 6132 000	3	INSERT M5	
16B	146 1711 000	3	SCREW M5X20 UNI7687	

A: ONLY VERSIONS WITHOUT BATTERY CHARGER ON BOARD

B: ONLY VERSIONS WITH BATTERY CHARGER ON BOARD

# Electrical components - BA 451 D - 531 D

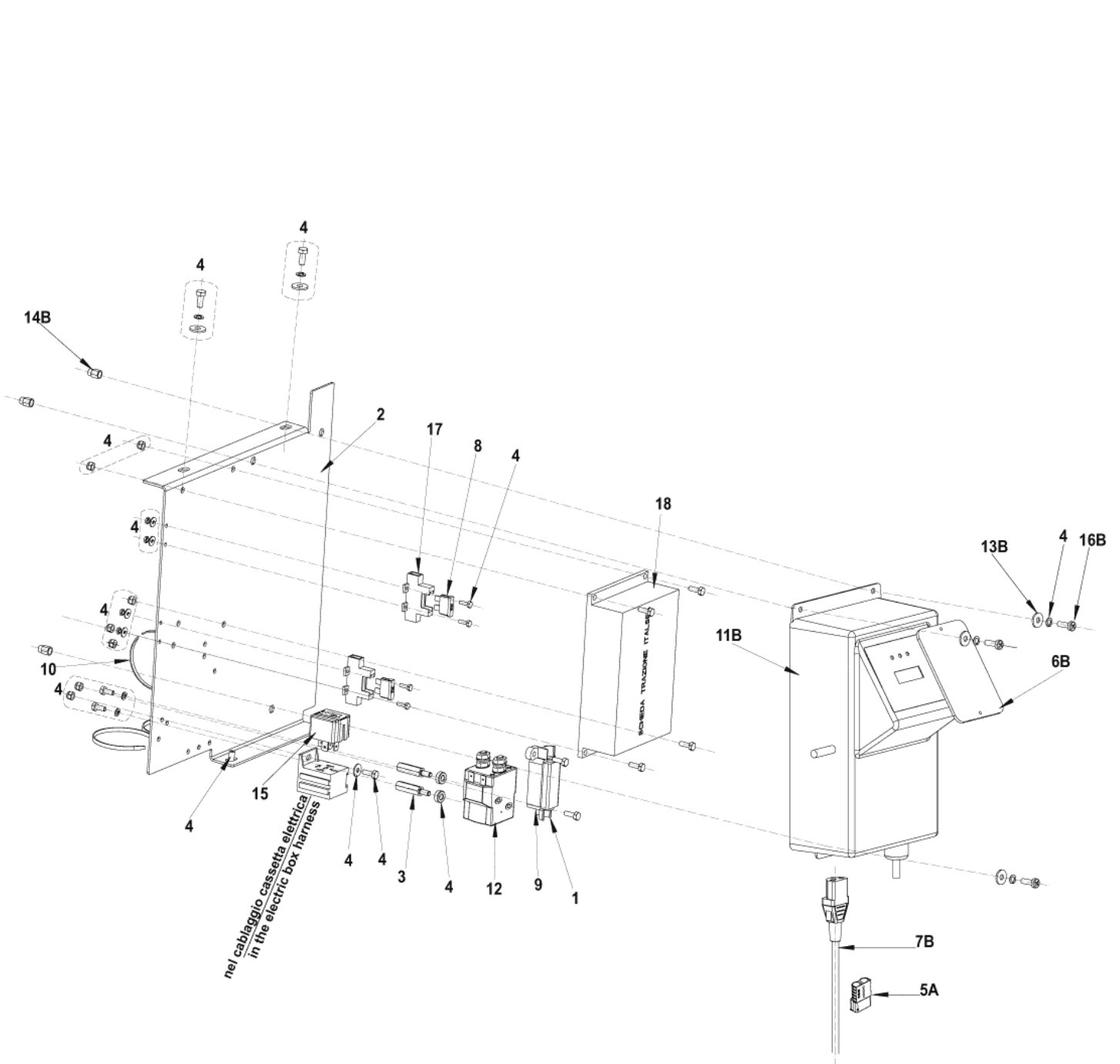
BA451/BA451D/BA531/BA 531D

01-03-2015

Part List ID

E183147

29



# Electrical components - BA 451 D - 531 D

BA451/BA451D/BA531/BA 531D

01-03-2015

Part List ID

E183147

30

Pos	Part no.	Qty	Description	
0	909 6617 000	1	HARNESS ELECTRIC BOX	before SN 064927239
0	909 6618 000	1	HARNESS BATTERY	
0	909 6839 000	1	HARNESS MACHINE	before SN 064927239
0	909 6840 000	1	HARNESS VACUUM MOTOR	
0	9096964000	1	HARNESS ELECTRIC BOX	starting from SN 064927239
0	9096972000	1	HARNESS MACHINE	FROM S. NO. 064927239
0	9097590000	1	CABLE BATTERY INTERCONNECTION	
0	9098640000	1	HARNESS MACHINE	FROM JUNE 2010
1	145 8046 000	1	HOLDER FUSE	
2	909 6498 000	1	SUPPORT ELECTRIC COMP.	
3	909 6676 000	2	SPACER M4 L25	
4	9098303000	1	HARDWARE ELECTRIC SYSTEM KIT	contains all Hardware shown in this system
8	145 8513 000	2	FUSE BLADE 30A UL	
9	145 3824 000	1	FUSE STRIP 40A	
10	145 1449 000	3	TIE CABLE 3.6x140 BLACK	
12	9097209000	1	SWITCH ELECTROMAGNETIC 24V	
15	909 6622 000	1	RELAY 24V 40A	
17	146 0660 000	2	HOLDER FUSE THERMOPL. UL 94-V0	
18	9100000173	1	CARD ELECTRONIC TRACTION PKD	
5A	9098762000	1	CONNECTOR 120A RED	
6B	909 5313 000	1	PLATE INSPECTION TRANSP.	
7B	909 5633 000	1	CABLE EXTENSION EU PLUG L.1000MM	
7B	909 5676 000	1	CABLE EXTENSION UK PLUG L.1000MM	
7B	9096914000	1	CABLE EXTENSION US PLUG L.1500MM	
11B	9098297000	1	CHARGER BATT. O/B 24V 13A 100-230V EU	
13B	33005912	3	WASHER M5 UNI6592	
14B	145 6132 000	3	INSERT M5	
16B	146 1711 000	3	SCREW M5X20 UNI7687	

A: ONLY VERSIONS WITHOUT BATTERY CHARGER ON BOARD

B: ONLY VERSIONS WITH BATTERY CHARGER ON BOARD

# Accessories Extra pressure-Splash guards

BA451/BA451D/BA531/BA 531D

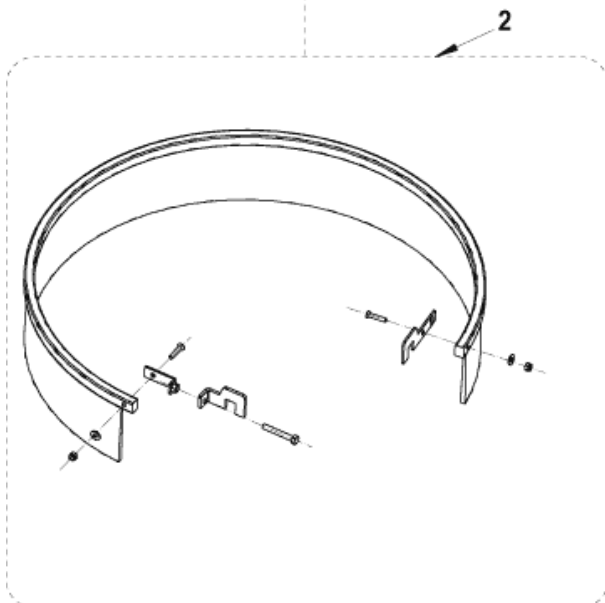
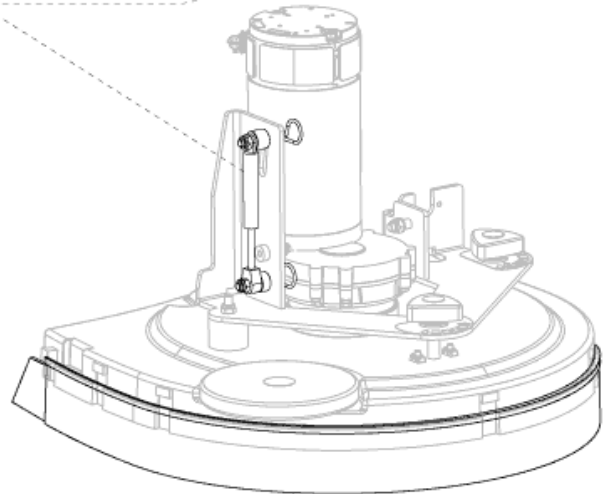
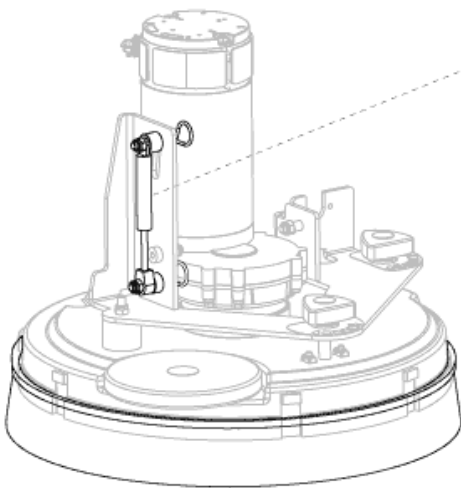
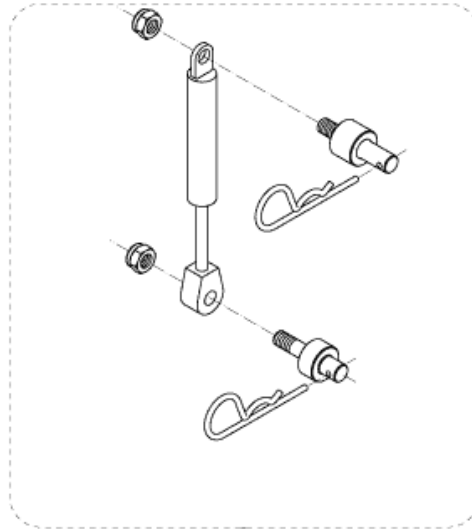
01-03-2015

Part List ID

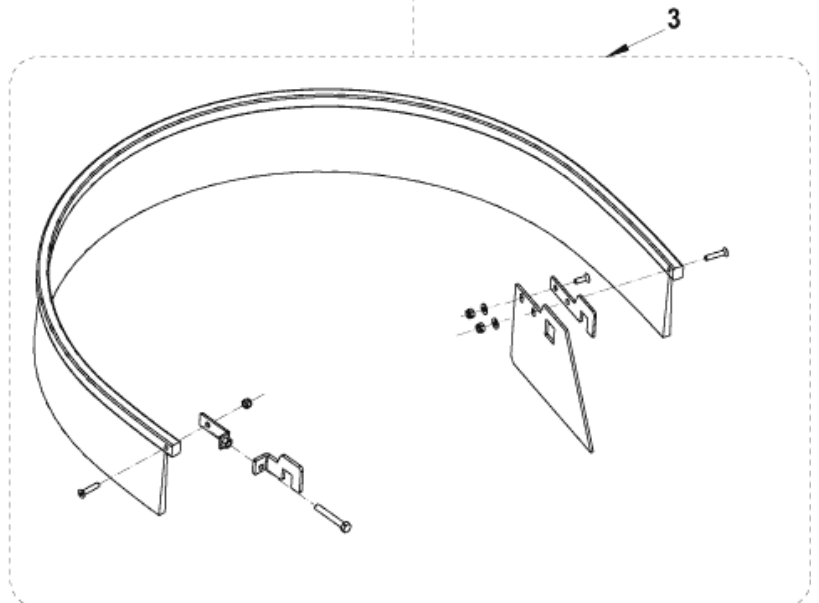
E183149

31

## KIT EXTRA PRESSIONE - EXTRA PRESSURE KIT ( BA 451 / BA 531 )



**KIT PARASPRUZZI 17"**  
**SPLASH GUARD 17" KIT**  
**( BA 451 / BA 451 D )**



**KIT PARASPRUZZI 20"**  
**SPLASH GUARD 20" KIT**  
**( BA 531 / BA 531 D )**

# Accessories Extra pressure-Splash guards

BA451/BA451D/BA531/BA 531D

01-03-2015

Part List ID

E183149

32

Pos	Part no.	Qty	Description	
1	909 6738 000	1	PRESSURE EXTRA BRUSH KIT	OPTION- INST.INSTR. 909 6759 000
2	909 6737 000	1	SPLASH GUARD KIT 450MM/18	OPTION- INST.INSTR. 909 6745 000
3	909 6736 000	1	SPLASH GUARD KIT 530MM/21	OPTION- INST.INSTR. 909 6745 000



# Accessories Battery Charger

BA451/BA451D/BA531/BA 531D

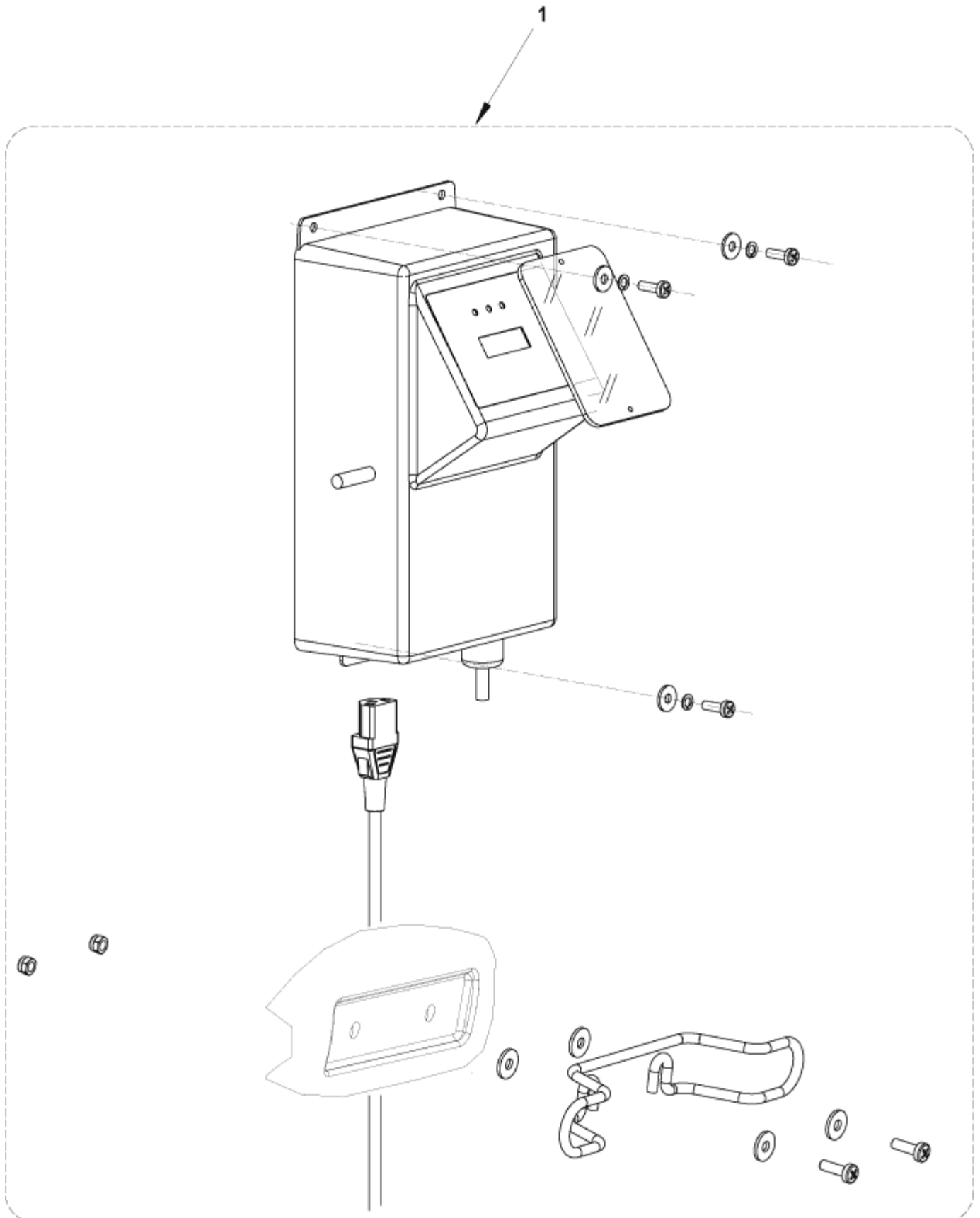
01-03-2015

Part List ID

E183151

33

## KIT CARICABATTERIA - BATTERY CHARGER KIT



# Accessories Battery Charger

BA451/BA451D/BA531/BA 531D

01-03-2015

Part List ID

E183151

34

Pos	Part no.	Qty	Description	
0	909 5633 000	1	CABLE EXTENSION EU PLUG L.1000MM	EU
0	9096914000	1	CABLE EXTENSION US PLUG L.1500MM	US
0	9098259000	1	CHARGER BATT. ON BOARD 24V 10A 100V KIT	JAPAN -OPTION- INST.INSTR. 9098262000
0	9098260000	1	CHARGER BATT. ON BOARD 24V 10A 100V	JAPAN
1	909 6739 000	1	CHARGER BATT. O/B 24V 13A 100-230V KIT	EU -OPTION- INST.INSTR. 909 6746 000

# Accessories Ecoflex system

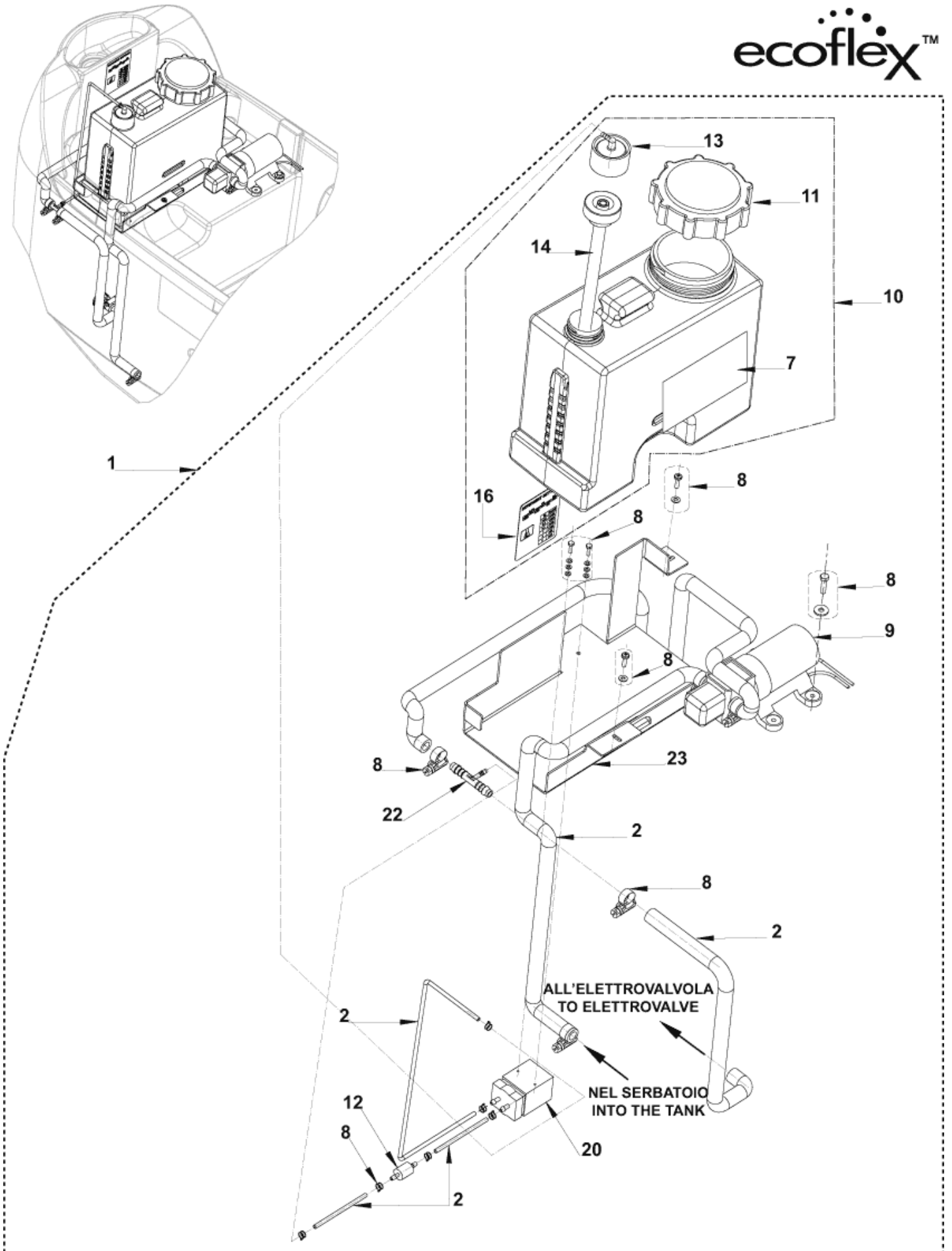
BA451/BA451D/BA531/BA 531D

01-03-2015

Part List ID  
E183153

35

ecoflex™



# Accessories Ecoflex system

BA451/BA451D/BA531/BA 531D

01-03-2015

Part List ID

E183153

36

Pos	Part no.	Qty	Description
0	909 6187 000	1	HARNESS PUMP
1	909 6743 000	1	ECOFLEX CHEMICAL KIT Accessory - INST.INSTR.9096936000
2	909 6806 000	1	HOSES CHEMICAL MIX KIT
7	909 6902 000	1	DECAL REWRITABLE 176X111MM
8	9098264000	1	HARDWARE EDS SYSTEM KIT
9	56315108	1	PUMP 24V
10	909 6903 000	1	TANK CHEMICAL KIT
11	56315517	1	CAP
12	56315522	1	CHECK VALVE 1/8 BARB 125PSI
13	56315523	1	CAP DRY BREAK 1/8 BARB
14	56315527	1	INSERT DRY BREAK
16	909 6592 000	1	DECAL DETERGENT ADJUST.
20	909 6183 000	1	PUMP CHEMICAL MIX
22	909 6092 000	1	HOLDER RUBBER T
23	909 6639 000	1	BRACKET

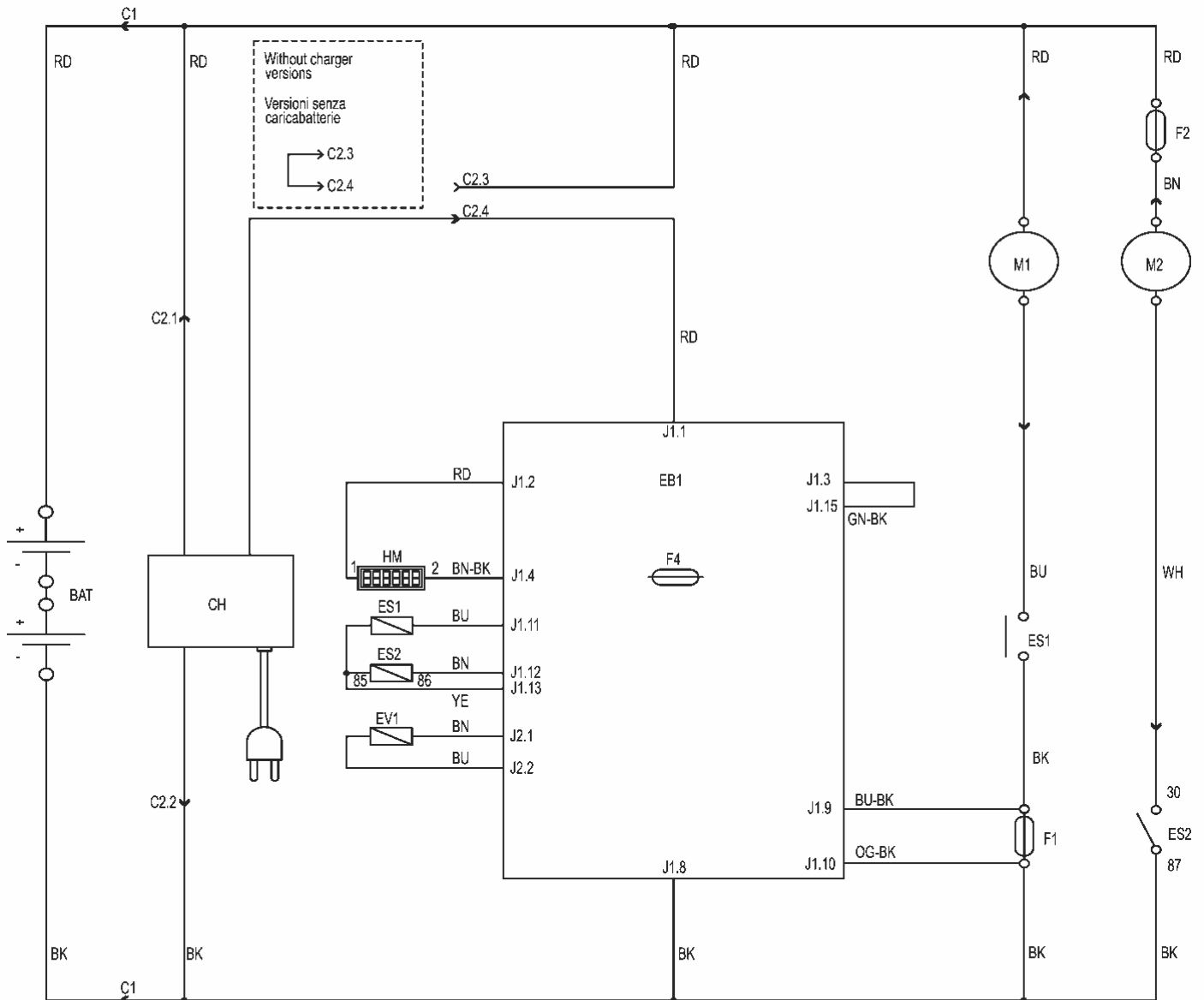
# Wiring diagram - BA 451 - 531

BA451/BA451D/BA531/BA 531D

01-03-2015

Part List ID  
E183154

37



WIRING DIAGRAM  
BA 451 - BA 531

Rev. A

909 6530 000

COMPONENTS / COMPONENTI		
BAT	24V BATTERIES	BATTERIE 24V
C1	BATTERY CONNECTOR	CONNETTORE BATTERIE
C2	CHARGER CONNECTOR	CONNETTORE CARICABATTERIE
CH	BATTERY CHARGER (OPT)	CARICABATTERIE (OPT)
CS	BRUSH DECK CONNECTOR	CONNETTORE TESTATA SPAZZOLE
EB1	CONTROL PANEL BOARD	SCHEMA ELETTRONICA CONTROLLO FUNZIONI
ES1	BRUSH MOTOR ELECTROM. SWITCH	TELERUTTORE MOTORI SPAZZOLE
ES2	VACUUM MOTOR ELECTROM. SWITCH	RELE' ASPIRATORE
EV1	WATER ELECTROVALVE	ELETTROVALVOLA ACQUA
F1	BRUSH DECK FUSE	FUSIBILE TESTATA SPAZZOLE
F2	VACUUM MOTOR FUSE	FUSIBILE ASPIRATORE
F4	LOW POWER CIRCUIT FUSE	FUSIBILE CIRCUITI DI SEGNALE
HM	HOURMETER (OPT)	CONTAORE (OPT)
M1	BRUSH MOTOR	MOTORE SPAZZOLA
M2	VACUUM MOTOR	MOTORE ASPIRATORE

# Wiring diagram - BA 451 - 531

BA451/BA451D/BA531/BA 531D

01-03-2015

Part List ID E183154

38

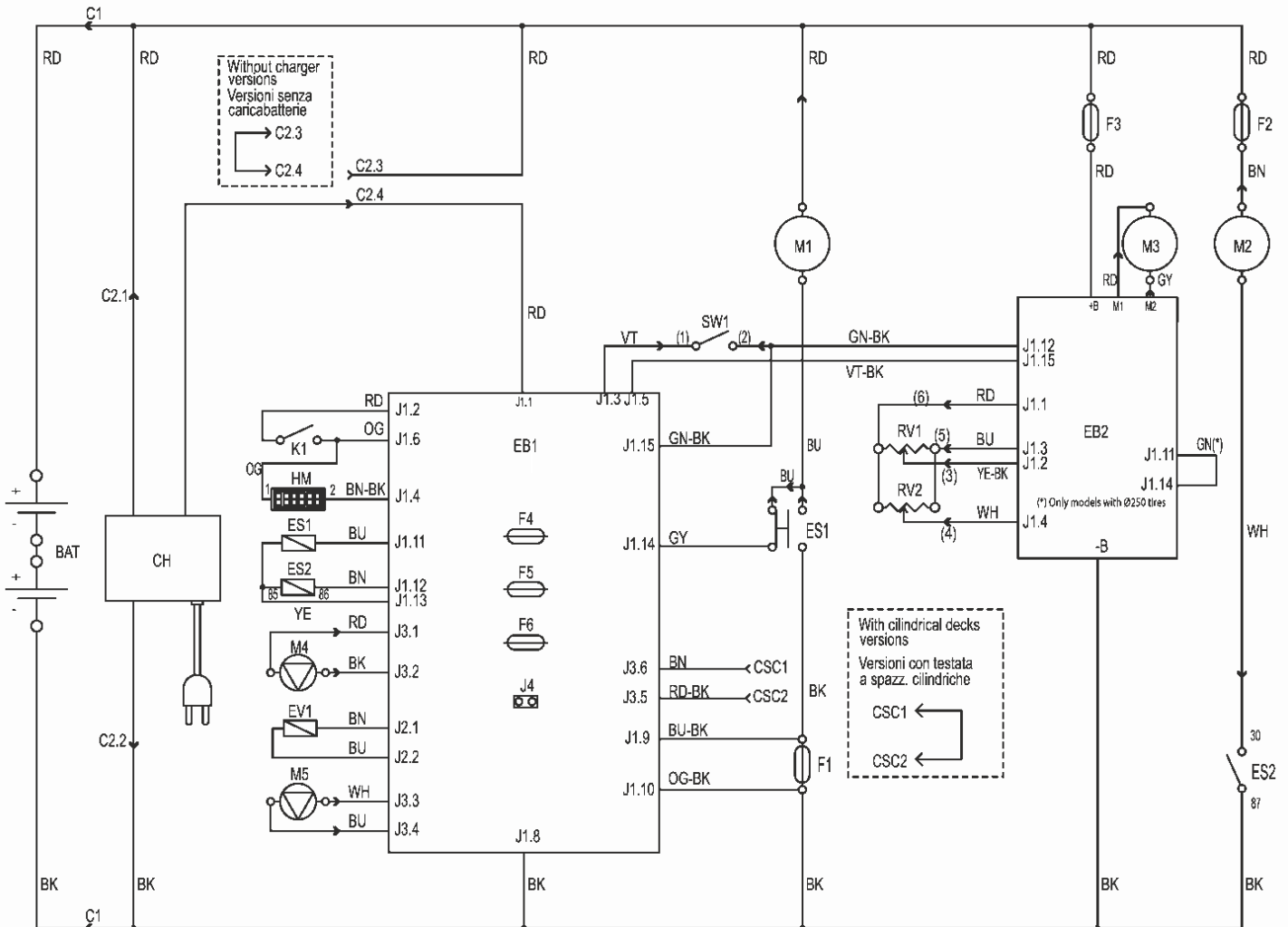
# Wiring diagram - BA 451 D - 531 D

BA451/BA451D/BA531/BA 531D

01-03-2015

Part List ID  
E183155

39



## WIRING DIAGRAM - BA 451 D / BA 531 D

Rev. B

909 6529 000

COMPONENTS / COMPONENTI					
BAT	24V BATTERIES	BATTERIE 24V	K1	KEY SWITCH	CHIAVE
C1	BATTERY CONNECTOR	CONNETTORE BATTERIE	M1	BRUSH MOTOR	MOTORE SPAZZOLA
C2	CHARGER CONNECTOR	CONNETTORE CARICABATTERIE	M2	VACUUM MOTOR	MOTORE ASPIRATORE
CH	BATTERY CHARGER (OPT)	CARICABATTERIE (OPT)	M3	DRIVE MOTOR	MOTORE TRAZIONE
CSC	CILINDRICAL DECK SECONDARY CONNECTOR	CONN. SECONDARIO TESTATA SPAZZ. CILINDRICHE	M4	WATER PUMP (OPT)	POMPA ACQUA (OPT)
EB1	CONTROL PANEL BOARD	SCHEDA ELETTRONICA CONTROLLO FUNZIONI	M5	DETERGENT PUMP (OPT)	POMPA DETERGENTE (OPT)
EB2	DRIVE ELECTRONIC BOARD	SCHEDA ELETTRONICA TRAZIONE	RV1	SPEED POTENTIOMETER	POTENZIOMETRO VELOCITA'
ES1	BRUSH MOTOR ELECTROM. SWITCH	TELERUTTORE MOTORI SPAZZOLE	RV2	MAX SPEED POTENTIOMETER	POTENZIOMETRO VELOCITA' MASSIMA
ES2	VACUUM MOTOR ELECTROM. SWITCH	RELE' ASPIRATORE	SW1	BRUSHES / DRIVE MICROSWITCH	MICROINTERR. CONSENSO SPAZZOLE/TRAZIONE
EV1	ELECTROVALVE	ELETTROVALVOLA			
F1	BRUSH DECK FUSE	FUSIBILE TESTATA SPAZZOLE			
F2	VACUUM MOTOR FUSE	FUSIBILE ASPIRATORE			
F3	DRIVE SYSTEM FUSE	FUSIBILE SISTEMA DI TRAZIONE			
F4	LOW POWER CIRCUIT FUSE	FUSIBILE CIRCUITI DI SEGNALE			
F5	BRUSH RELEASE FUSE	FUSIBILE SGANCIO SPAZZOLE			
F6	PUMP FUSE	FUSIBILE POMPE			
HM	HOURMETER (OPT)	CONTAORE (OPT)			

# Wiring diagram - BA 451 D - 531 D

BA451/BA451D/BA531/BA 531D

01-03-2015

Part List ID

E183155

40



# Recommended spare parts 1

BA451/BA451D/BA531/BA 531D

01-03-2015

Part List ID  
E183156

41

No Drawing For Part List

# Recommended spare parts 1

BA451/BA451D/BA531/BA 531D

01-03-2015

Part List ID

E183156

42

Pos	Part no.	Qty	Description	
1	909 6650 000	1	SPONGE F SOLUTION TANK INLET	BA 451 / BA 451 D / BA 531 / BA 531 D
2	909 6681 000	1	HOSE CLEAN WATER	BA 451 / BA 451 D / BA 531 / BA 531 D
3	L08812457	1	CAP TANK	BA 451 / BA 451 D / BA 531 / BA 531 D
4	909 6874 000	1	CABLE TANK KIT	BA 451 / BA 451 D / BA 531 / BA 531 D
5	9098265000	1	HARDWARE SOLUTION TANK KIT	BA 451 / BA 451 D / BA 531 / BA 531 D
6	9099852000	1	HOSE SQUEEGEE VACUUM PKD	BA 451 / BA 451 D / BA 531 / BA 531 D
7	9099165000	1	HOSE DRAIN RAL 7001	BA 451 / BA 451 D / BA 531 / BA 531 D
8	L08812259	2	CAGE FLOAT HALF	BA 451 / BA 451 D / BA 531 / BA 531 D
9	L08812373	1	BALL FLOATING	BA 451 / BA 451 D / BA 531 / BA 531 D
10	145 0543 000	2	CLAMP 14/32-52	BA 451 / BA 451 D / BA 531 / BA 531 D
11	909 6899 000	1	CAP TANK	BA 451 / BA 451 D / BA 531 / BA 531 D
12	909 6877 000	1	HARDWARE MOTOR FIXING KIT	BA 451 / BA 451 D / BA 531 / BA 531 D
13	909 6876 000	1	HARDWARE CAGE SUP.FIXING KIT	BA 451 / BA 451 D / BA 531 / BA 531 D
14	9099401000	1	MOTOR VACUUM KIT	BA 451 / BA 451 D / BA 531 / BA 531 D
15	9098231000	1	CARBON BRUSHES KIT 2 PCS	BA 451 / BA 451 D / BA 531 / BA 531 D
16	909 6491 000	1	PANEL ACOUSTIC INSULATION	BA 451 / BA 451 D / BA 531 / BA 531 D
17	9098057000	1	GASKET VACUUM MOTOR	BA 451 / BA 451 D / BA 531 / BA 531 D
18	9097555000	1	GASKET VACUUM MOTOR	BA 451 / BA 451 D / BA 531 / BA 531 D
19	909 6672 000	1	FILTER	BA 451 / BA 451 D / BA 531 / BA 531 D
20	9099028000	2	WHEEL CASTOR WITH HARDWARE KIT	BA 451 / BA 531
21	9099028000	2	WHEEL CASTOR WITH HARDWARE KIT	BA 451 D / BA 531 D
22	909 6878 000	1	HARDWARE CHAS.FIXING KIT	BA 451 / BA 451 D / BA 531 / BA 531 D
23	9099028000	2	WHEEL CASTOR WITH HARDWARE KIT	
25	909 6548 000	1	MOTOR DRIVE 200W 24V	BA 451 D / BA 531 D
26	145 5124 000	2	CARBON BRUSH	BA 451 D / BA 531 D
27	L08812282	2	CAM HANDLE MICROSWITCH	BA 451 D / BA 531 D
28	9098300000	1	HARDWARE HANDLE BAR COMPLETE KIT	BA 451 D / BA 531 D
29	9098814000	1	POTENTIOMETER 5K 40	BA 451 D / BA 531 D
30	909 6677 000	1	MICROSWITCH	BA 451 D / BA 531 D
31	9096994000	1	VALVE ELBOW	BA 451 / BA 451 D / BA 531 / BA 531 D
32	9097166000	1	FILTER COMPLETE KIT	BA 451 / BA 451 D / BA 531 / BA 531 D
33	9096995000	1	VALVE BALL ELBOW W/HOSES KIT	BA 451 / BA 451 D / BA 531 / BA 531 D
34	909 6555 000	1	SOLENOID VALVE 24V	BA 451 / BA 451 D / BA 531 / BA 531 D
35	9100000106	1	HOLDER RUBBER 1/2 FEMALE KIT	BA 451 / BA 451 D / BA 531 / BA 531 D
36	9098777000	1	HOLDER RUBBER 90 F HOSE D.10 PKD	BA 451 / BA 451 D / BA 531 / BA 531 D

# Recommended spare parts 2

BA451/BA451D/BA531/BA 531D

01-03-2015

Part List ID

E183157

43

No Drawing For Part List

# Recommended spare parts 2

BA451/BA451D/BA531/BA 531D

01-03-2015

Part List ID E183157

44

Pos	Part no.	Qty	Description	
37	909 6055 000	1	STRAP.SQUEEGEE FRONT	BA 451 / BA 451 D / BA 531 / BA 531 D
38	909 6044 000	1	WELDMENT.SQUEEGEE TOOL	BA 451 / BA 451 D / BA 531 / BA 531 D
39	9097637000	1	SQUEEGEE FIXING KIT	BA 451 / BA 451 D / BA 531 / BA 531 D
40	9100000791	1	KNOB M8X30 THD STUD SS PKD	BA 451 / BA 451 D / BA 531 / BA 531 D
43	909 6851 000	1	SQUEEGEE CPL ALU 760MM/30 KIT	BA 451 / BA 451 D / BA 531 / BA 531 D
44	909 6882 000	1	HARDWARE SQU.BLADE FIXING KIT	BA 451 / BA 451 D / BA 531 / BA 531 D
45	909 6883 000	1	WHEELS SQUEEGEE 60X20MM KIT	BA 451 / BA 451 D / BA 531 / BA 531 D
46	9100000279	1	BLADES NON MARKING 740MM/29 KIT	BA 451 / BA 451 D / BA 531 / BA 531 D
47	909 6884 000	1	ROLLER BUMPER SQUEEGE.KIT	BA 451 / BA 451 D / BA 531 / BA 531 D
48	909 6394 000	1	LATCH SQUEEGEE KIT	BA 451 / BA 451 D / BA 531 / BA 531 D
49	909 6885 000	1	HARDWARE SQUEEGEE FIXING KIT	BA 451 / BA 451 D / BA 531 / BA 531 D
50	909 6852 000	1	DECK BRUSH 450MM/18 KIT	BA 451 D
51	909 6853 000	1	DECK BRUSH 530MM/21 KIT	BA 531 D
52	909 6043 000	1	DECK BRUSH	BA 451/ BA 451 D
53	909 6042 000	1	DECK BRUSH	BA 531/ BA 531 D
54	9098308000	1	REDUCTION GEARMOTOR 450W 24V	BA 451 D / BA 531 D
55	9098376000	1	CARBON BRUSHES KIT 4 PCS	BA 451 D / BA 531 D
56	145 8564 000	2	PIN SPLIT 3X60 UNI8833	BA 451 D / BA 531 D
57	909 6514 000	1	SPRING GAS	BA 451 D / BA 531 D
58	L08601624	1	HOLDER RUBBER 1/4 D.10	BA 451 / BA 451 D / BA 531 / BA 531 D
59	9100000868	1	VIBRATION DAMPING M8 60SH 2 PCS SET	BA 451 / BA 451 D / BA 531 / BA 531 D
60	9097093000	1	HOLDER POLYGONAL KIT	BA 451 / BA 451 D / BA 531 / BA 531 D
61	909 6887 000	1	ROLLER BUMPER KIT	BA 451 / BA 451 D / BA 531 / BA 531 D
62	9099419000	1	HARDWARE BRUSH DECK SYST.KIT	BA 451 / BA 451 D / BA 531 / BA 531 D
63	9100000174	1	CARD ELECTRONIC FUNCTIONS PKD	BA 451/ BA 531
64	9098635000	1	DECAL CONTROL PANEL	BA 451/ BA 531
65	146 2888 000	1	SWITCH KEY WITH CAP	BA 451 D/ BA 531 D
66	9100000175	1	CARD ELECTRONIC FUNCTIONS PKD	BA 451 D/ BA 531 D
66	9100000179	1	CARD ELECTRONIC FUNCTIONS PKD	
67	9098634000	1	DECAL CONTROL PANEL ECOFLEX	BA 451 D/ BA 531 D
68	145 8368 000	1	FUSE BLADE 3A	BA 451 / BA 451 D / BA 531 / BA 531 D
69	9100000173	1	CARD ELECTRONIC TRACTION PKD	BA 451 D/ BA 531 D
70	9097209000	1	SWITCH ELECTROMAGNETIC 24V	BA 451 D/ BA 531 D
71	9098762000	1	CONNECTOR 120A RED	BA 451 / BA 451 D / BA 531 / BA 531 D
72	909 6622 000	1	RELAY 24V 40A	BA 451 / BA 451 D / BA 531 / BA 531 D
73	145 3824 000	1	FUSE STRIP 40A	BA 451 / BA 451 D / BA 531 / BA 531 D
74	145 8513 000	1	FUSE BLADE 30A UL	BA 451 / BA 451 D / BA 531 / BA 531 D
75	9098297000	1	CHARGER BATT. O/B 24V 13A 100-230V EU	BA 451 / BA 451 D / BA 531 / BA 531 D

POSITIONS 41-42: 909 6483 000 - 909 6484 000 INCLUDED IN THE KIT 909 6860 000

# Optionals

BA451/BA451D/BA531/BA 531D

01-03-2015

Part List ID

E183158

45

No Drawing For Part List

# Optionals

BA451/BA451D/BA531/BA 531D

01-03-2015

Part List ID E183158

46

Pos	Part no.	Qty	Description	
1	909 6743 000	1	ECOFLEX CHEMICAL KIT	BA 451 D / BA 531 D
2	909 6806 000	1	HOSES CHEMICAL MIX KIT	BA 451 D / BA 531 D
3	56315108	1	PUMP 24V	BA 451 D / BA 531 D
4	909 6903 000	1	TANK CHEMICAL KIT	BA 451 D / BA 531 D
5	56315517	1	CAP	BA 451 D / BA 531 D
6	56315522	1	CHECK VALVE 1/8 BARB 125PSI	BA 451 D / BA 531 D
7	56315523	1	CAP DRY BREAK 1/8 BARB	BA 451 D / BA 531 D
8	56315527	1	INSERT DRY BREAK	BA 451 D / BA 531 D
9	909 6183 000	1	PUMP CHEMICAL MIX	BA 451 D / BA 531 D
10	909 6092 000	1	HOLDER RUBBER T	BA 451 D / BA 531 D
11	909 6847 000	1	DECK BRUSH 450MM/18 KIT W	BA 451
12	909 6848 000	1	DECK BRUSH 530MM/21 KIT WITH	BA 531
13	9097167000	2	WHEEL FRONT D.200 65SH	BA 451 / BA 531
14	909 6738 000	1	PRESSURE EXTRA BRUSH KIT	BA 451 / BA 531
15	909 6736 000	1	SPLASH GUARD KIT 530MM/21	BA 531 / BA 531 D
16	909 6737 000	1	SPLASH GUARD KIT 450MM/18	BA 451 / BA 451 D
17	L08837020	1	BRUSH DISC 450MM 17.5 PROLENE	BA 451 / BA 451 D
18	L08837021	1	BRUSH DISC 450MM 17.5 PROLITE	BA 451 / BA 451 D
19	L08837022	1	BRUSH UNION MIX 450MM	BA 451 / BA 451 D
20	L08837023	1	BRUSH MIDLITE GRIT	BA 451 / BA 451 D
21	L08837024	1	BRUSH MID GRIT 240 450MM	BA 451 / BA 451 D
22	9099668000	1	PAD HOLDER FLAT 17 432MM	BA 451 / BA 451 D
22	L08837017	1	PAD HOLDER 450MM	BA 451 / BA 451 D
23	L08837025	1	BRUSH DISC 530MM 21 PROLENE	BA 531 / BA 531 D
24	L08837026	1	BRUSH DISC 530MM 21 PROLITE	BA 531 / BA 531 D
25	L08837027	1	BRUSH DISC 530MM 21 UNION MIX	BA 531 / BA 531 D
26	L08837028	1	BRUSH DISC 530MM 21 MIDLITE GRIT 180	BA 531 / BA 531 D
27	L08837029	1	BRUSH DISC 530MM 21 MID GRIT 240	BA 531 / BA 531 D
28	L08837065	1	BRUSH DISC 530MM 21 MAGNA GRIT 46	BA 531 / BA 531 D
29	L08837066	1	BRUSH DISC 530MM 21 DYNA GRIT 80	BA 531 / BA 531 D
30	L08837067	1	BRUSH DISC 530MM 21 AGLITE GRIT 500	BA 531 / BA 531 D
31	9099671000	1	PAD HOLDER FLAT 20 508MM	BA 531 / BA 531 D
31	L08837018	1	PAD HOLDER 530MM	BA 531 / BA 531 D
32	9097032000	2	WHEEL FRONT D.200 DRIVE	BA 451 D / BA 531 D
33	L08603878	1	SQUEEGEE CPL KIT 30	BA 451 / BA 451 D / BA 531 / BA 531 D
34	909 6858 000	1	BLADE SQUEEGEE 740MM 29 PU KIT	BA 451 / BA 451 D / BA 531 / BA 531 D
35	909 6739 000	1	CHARGER BATT. O/B 24V 13A 100-230V KIT	BA 451 / BA 451 D / BA 531 / BA 531 D
36	9097290000	1	HOSE FILLING	BA 451 / BA 451 D / BA 531 / BA 531 D
37	9096916000	1	FILTER SOLUTION TANK	BA 451 / BA 451 D / BA 531 / BA 531 D-OPTION
38	9096951000	1	COUNTER HOUR 24V KIT	BA 451 / BA 451 D / BA 531 / BA 531 D
39	909 6734 000	1	RUBBER BAND HOLDER KIT	BA 451 / BA 451 D / BA 531 / BA 531 D
40	909 5065 000	1	FILTER ANTIFOAMING	BA 451 / BA 451 D / BA 531 / BA 531 D
41	9098343000	1	THIRD BLADE SQUEEGEE KIT D6/7	BA 451 / BA 451 D / BA 531 / BA 531 D

# Optionals

BA451/BA451D/BA531/BA 531D

01-03-2015

Part List ID  
E183158

47

Pos	Part no.	Qty	Description	
42	9098853000	1	ELBOW 90 SUCT.HOSE KIT RAL7001	TSB-IT 2010-061
43	9100000335	1	STRAP ANTISTATIC KIT	OPT

# Wiring diagram - BA 451 D - 531 D REV.C

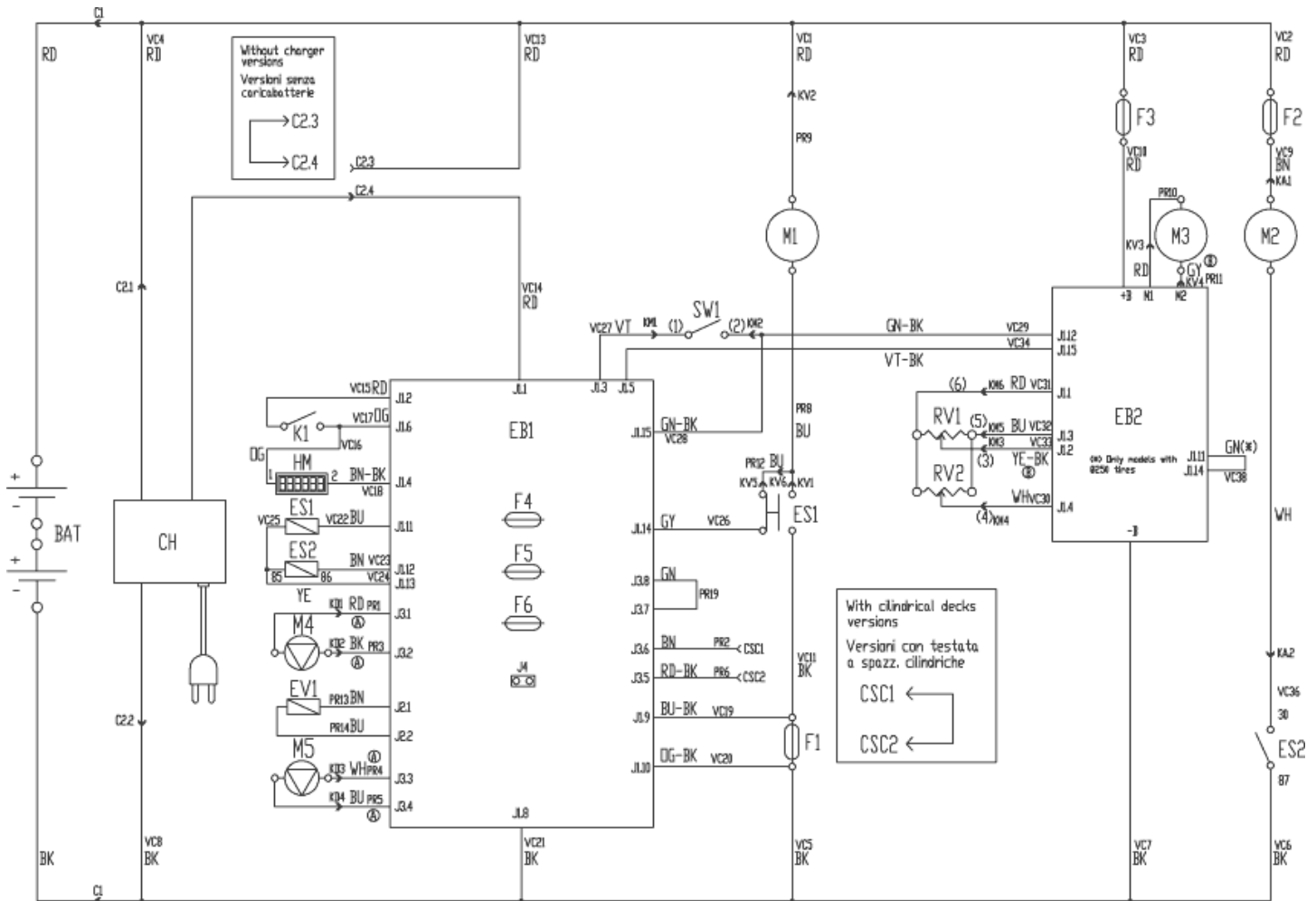
BA451/BA451D/BA531/BA 531D

01-03-2015

Part List ID

E183155A

48



## WIRING DIAGRAM - BA 451D / BA 531D

Rev. C

909 6529 000

COMPONENTS / COMPONENTI					
BAT	24V BATTERIES	BATTERIE 24V	K1	KEY SWITCH	CHIAVE
C1	BATTERY CONNECTOR	CONNETTORE BATTERIE	M1	BRUSH MOTOR	MOTORE SPAZZOLA
C2	CHARGER CONNECTOR	CONNETTORE CARICABATTERIE	M2	VACUUM MOTOR	MOTORE ASPIRATORE
CH	BATTERY CHARGER (OPT)	CARICABATTERIE (OPT)	M3	DRIVE MOTOR	MOTORE TRAZIONE
CSC	CILINDRICAL DECK SECONDARY CONNECTOR	CONN. SECONDARIO TESTATA SPAZZ. CILINDRICHE	M4	WATER PUMP (OPT)	POMPAACQUA (OPT)
EB1	CONTROL PANEL BOARD	SCHEDA ELETTRONICA CONTROLLO FUNZIONI	M5	DETERGENT PUMP (OPT)	POMPA DETERGENTE (OPT)
EB2	DRIVE ELECTRONIC BOARD	SCHEDA ELETTRONICA TRAZIONE	RV1	SPEED POTENTIOMETER	POTENZIOMETRO VELOCITA'
ES1	BRUSH MOTOR ELECTROM. SWITCH	TELERUTTORE MOTORI SPAZZOLE	RV2	MAX SPEED POTENTIOMETER	POTENZIOMETRO VELOCITA' MASSIMA
ES2	VACUUM MOTOR ELECTROM. SWITCH	RELE' ASPIRATORE	SW1	BRUSHES / DRIVE MICROSWITCH	MICROINTERR. CONSENSO SPAZZOLE/TRAZIONE
EV1	ELECTROVALVE	ELETTROVALVOLA			
F1	BRUSH DECK FUSE	FUSIBILE TESTATA SPAZZOLE			
F2	VACUUM MOTOR FUSE	FUSIBILE ASPIRATORE			
F3	DRIVE SYSTEM FUSE	FUSIBILE SISTEMA DI TRAZIONE			
F4	LOW POWER CIRCUIT FUSE	FUSIBILE CIRCUITI DI SEGNALE			
F5	BRUSH RELEASE FUSE	FUSIBILE SGANCIO SPAZZOLE			
F6	PUMP FUSE	FUSIBILE POMPE			
HM	HOURMETER (OPT)	CONTAORE (OPT)			



# Wiring diagram - BA 451 D - 531 D REV.C

BA451/BA451D/BA531/BA 531D

01-03-2015

Part List ID

E183155A

49