



汽油机零

PARTS C

**LC2V80FD**



**Version number: LC/LT-2018-A**

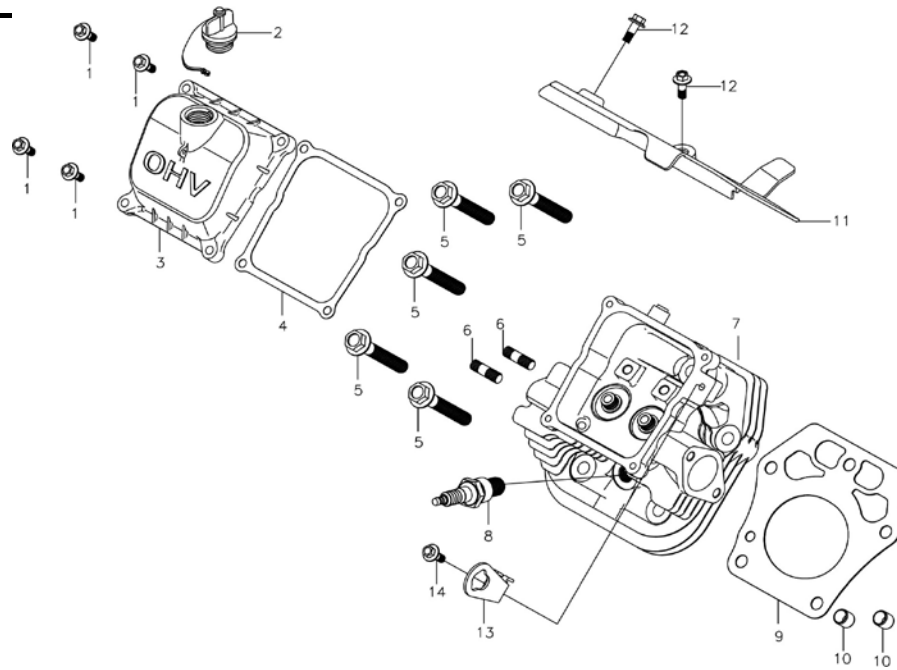
**隆鑫通用动力股份有限公司**

**LONCIN MOTOR CO.,LTD.**

# 零件图册

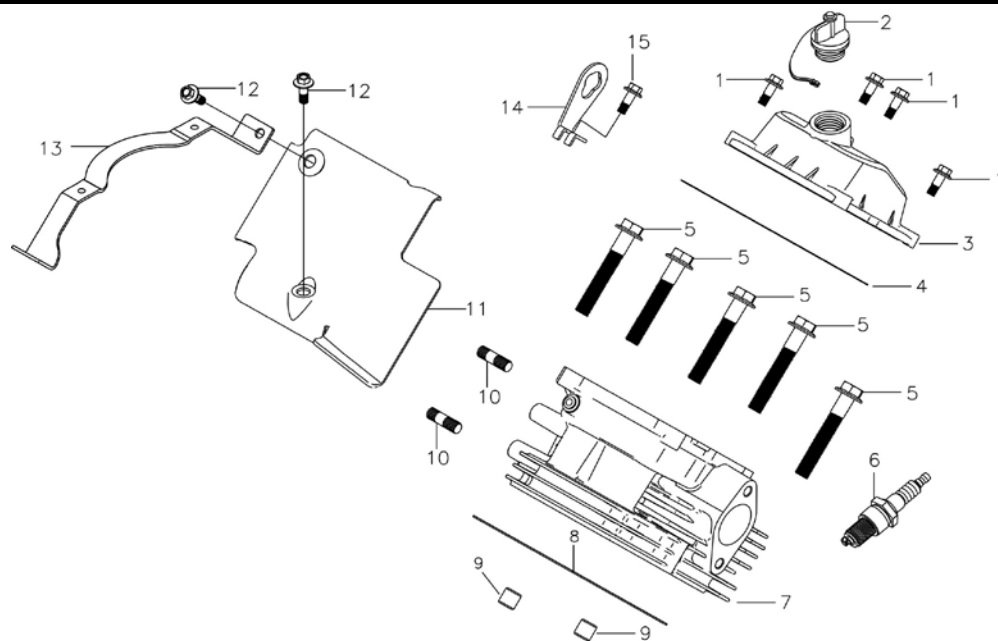
ATALOGUE





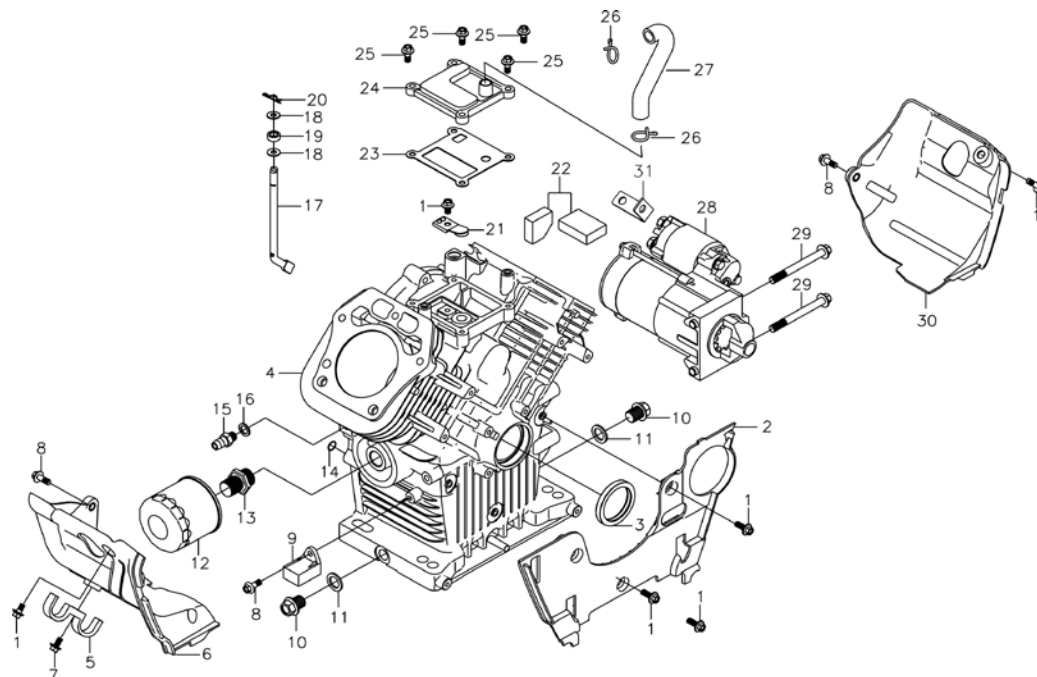
气缸头I总成 (CYLINDER HEAD ASSY)

序号	零部件件号	零部件名称	Description	规格状态	数量	易损属性
No.	Part No.				Reqd. QTY	ONSUMABLE GRAD
1	380140103-0004	六角头法兰面螺栓	Hexagon bolt with flange	GB/T 5789_M6_L=25;镀蓝白锌Q16	4	C
2	110690101-0001	机油尺组合	Oil rule combination	T230_机油塞_M20×2.5;带链条_本色	1	B
3	120230165-0001	气缸头盖	Cylinder head cover	T230_左,带机油加注口_铝合金;	1	C
4	120250058-0001	气缸头盖密封垫	Gasket for cylinder head cov	T230_厚0.5_interface(N-8092);	1	C
5	380140454-0002	六角头法兰面螺栓	Hexagon bolt with flange	T440_M10×1.25_L=65_缸头连接螺	6	C
6	380180139-0001	双头螺栓	Stud	T470_M8_L=42;镀蓝白锌Q16	4	C
7	120080786-0001	气缸头	Cylinder head(L)	T231_左气缸头,锁夹状态;	1	B
8	270960028-0002	火花塞	Spark plug	RC12YC;Cr3+钝化	1	A
9	120150250-0001	气缸头密封垫	Gasket for cylinder head	T231_石墨_厚1.2;	1	A
10	380600122-0001	定位销	ocation pin	T370_d=12_L=12;	2	C
11	160190114-0001	空气导流罩	air deflector(L)	T231_左侧缸头_上导流罩;	1	C
12	380140013-0005	六角头法兰面螺栓	Hexagon bolt with flange	GB/T 5789_M6_L=16;镀蓝白锌Q16	2	C
13	120550017-0001	吊耳	Lifting eye	T470;	1	C
14	380020086-0001	六角头轴肩螺栓	Hexagon shaft shoulder bolt	T390_M6×16.8(Φ8×5.8);镀蓝白锌Q	1	C



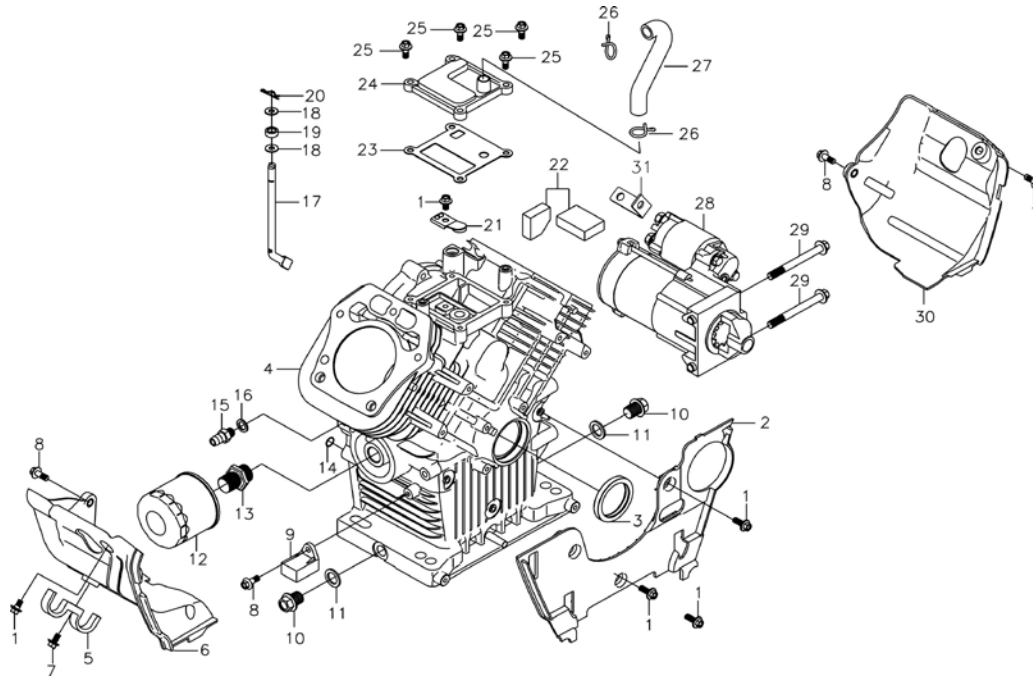
气缸头II总成 (CYLINDER HEAD ASSY)

序号 No.	零部件件号 Part No.	零部件名称	Description	规格状态	数量 Reqd. QTY	易损属性 CONSUMABLE GRAD
1	380140103-0004	六角头法兰面螺栓	Hexagon bolt with flange	GB/T 5789_M6_L=25;镀蓝白锌Q16	4	C
2	110690101-0001	机油尺组合	Oil rule combination	T230_机油塞_M20x2.5;带链条_本色	1	B
3	120230165-0001	气缸头盖	Cylinder head cover	T230_左,带机油加注口_铝合金;	1	C
5	380140454-0002	六角头法兰面螺栓	Hexagon bolt with flange	T440_M10x1.25_L=65_缸头连接螺	6	C
4	120250058-0001	气缸头盖密封垫	Gasket for cylinder head cov	T230_厚0.5_interface(N-8092);	1	A
6	270960028-0002	火花塞	Spark plug	RC12YC;Cr3+钝化	1	A
7	120080787-0001	气缸头	Cylinder head	T231_右气缸头,锁夹状态;	1	B
8	120150250-0001	气缸头密封垫	Gasket for cylinder head	T231_石墨_厚1.2;	1	A
9	380600122-0001	定位销	ocation pin	T370_d=12_L=12;	2	C
10	380180139-0001	双头螺栓	Stud	T470_M8_L=42;镀蓝白锌Q16	2	C
11	160190115-0001	空气导流罩	air deflector	T231_右侧缸头_上导流罩;	1	C
12	380140013-0005	六角头法兰面螺栓	Hexagon bolt with flange	GB/T 5789_M6_L=16;镀蓝白锌Q16	2	C
13	300710132-0001	空滤器支架	Air filter bracket	T231;	1	C
14	120550017-0001	吊耳	Lifting eye	T470;	1	C
15	380140004-0004	六角头法兰面螺栓	Hexagon bolt with flange	GB/T 16674.1_M8_L=20;镀蓝白锌Q	1	C



曲轴箱体 (CRANKCASE)

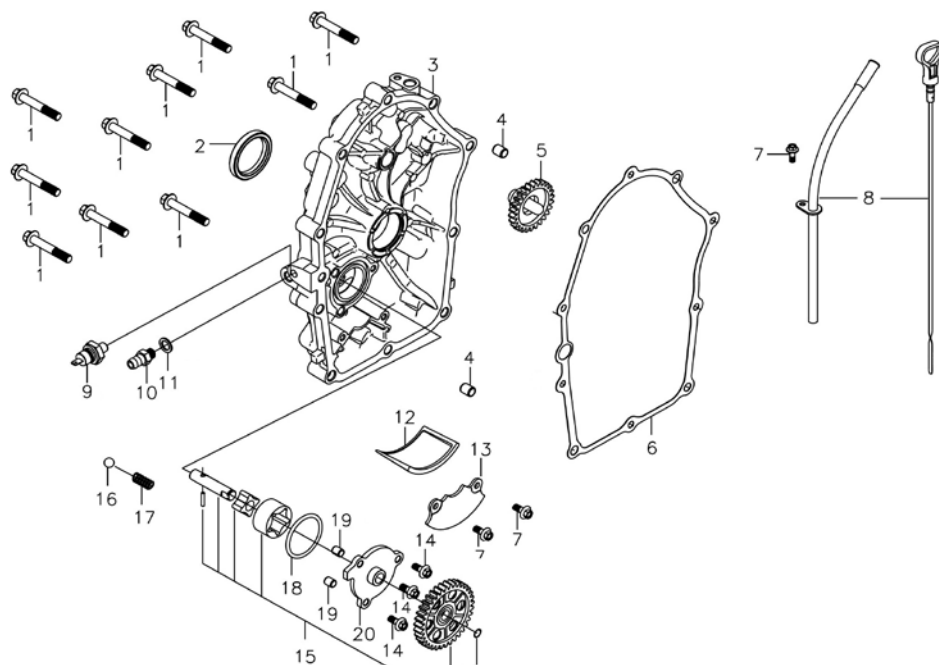
序号 No.	零部件件号 Part No.	零部件名称	Description	规格状态	数量	易损属性
					Reqd. QTY	ONSUMABLE GRAD
1	380140067-0003	六角头法兰面螺栓	Hexagon bolt with flange	GB/T 5789_M6_L=12;镀蓝白锌Q16	5	C
2	160190111-0001	空气导流罩	air deflector	T231_箱体侧护罩1;	1	C
3	380650337-0001	油封	Oil seal	T110_d=35_D=52_b=7;含Hg/Cr6/P	1	C
4	110810365-0001	曲轴箱体	Crankcase body	T231;	1	B
5	380930114-0001	定位线卡	Location wire nail	T231_散热器油管用;	1	A
6	160190112-0001	空气导流罩	air deflector	T231_左侧缸头_下导流罩;	1	C
7	380140077-0005	六角头法兰面螺栓	Hexagon bolt with flange	GB/T 5789_M6_L=20;镀蓝白锌Q16	1	C
8	380140013-0005	六角头法兰面螺栓	Hexagon bolt with flange	GB/T 5789_M6_L=16;镀蓝白锌Q16	3	C
9	281890012-0001	机油保护器	Engine oil protector	T231_带中间延时功能;	1	C
10	110260001-0001	密封螺塞	Sealing plug screw	T240_M14×15;镀蓝白锌 Q16	2	C
11	380450591-0001	平垫圈	Flat washer	Q/LX G 8.7_内径14_外径22_厚度2;	2	C
12	150350050-0001	机油精滤器组合	Oil filter	T230_加长型;	1	A
13	150840004-0001	机油精滤器安装螺栓	Oil filter Mounting bolts	T400;	1	C



曲轴箱体 (CRANKCASE)

序号 No.	零部件件号 Part No.	零部件名称	Description	规格状态	数量	易损属性
					Reqd. QTY	ONSUMABLE GRAD
14	380840812-0001	密封圈	Seal ring	T372_D=11.7_d=2.5_氟橡胶;红色	1	A
15	380780084-0001	管接头	coupling	T231;	1	C
16	380450514-0001	平垫圈	Flat washer	GB/T 290_HK081210;	1	C
17	171630013-0001	调速臂	Speed regulating arm	T230;	1	B
18	380450522-0002	平垫圈	Flat washer	T240_d=8_D=14_b=5;含Hg/Cr6/Pb,	2	c
19	380650377-0001	油封	Oil seal	GB/T 896_d=7;镀达克铬Q19	1	B
20	381350004-0001	销夹	Pin clip	T230_塑料;	2	A
21	140250019-0001	簧片阀	Leaf valve	T231;含Hg/Cr6/Pb/PBB/PBDE≤100	1	A
22	150310020-0001	滤网	Filter	GB/T 5789_M6_L=12;镀蓝白锌Q16	1	A
23	110850025-0001	呼吸槽密封垫	PACKING, BREATHER CH	T230;	1	A
24	110840035-0001	呼吸槽盖板	CAP,BREATHER CHAMBE	T230;	1	C
25	380140077-0005	六角头法兰面螺栓	Hexagon bolt with flange	T230_废气管;	4	C
26	380950212-0001	管夹	Pipe clip	T240_Φ16.5_废气管夹;	2	A

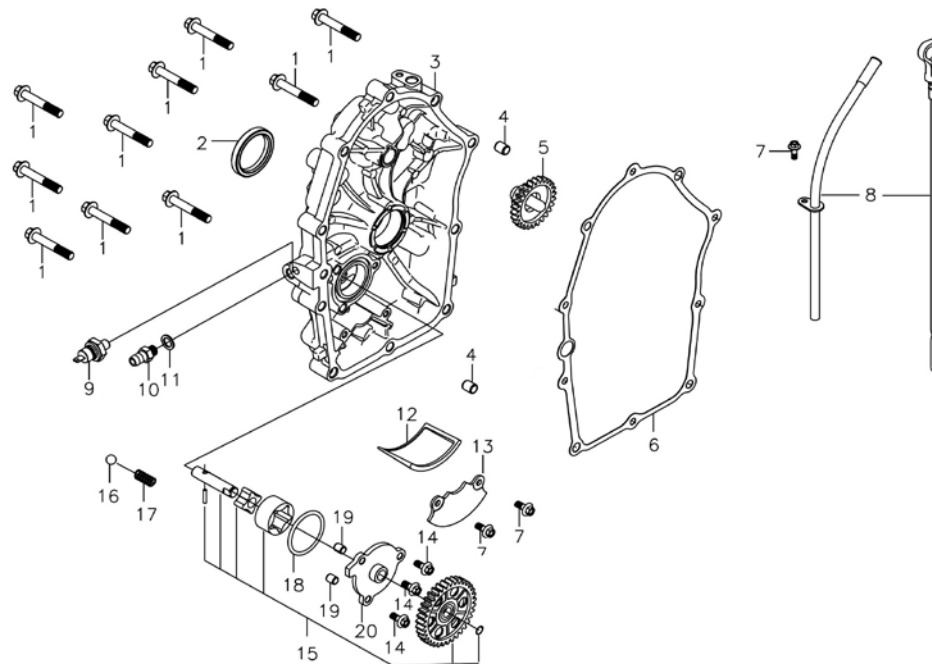




曲轴箱盖 (CRANKCASE COVER)

序号 No.	零部件件号 Part No.	零部件名称	Description	规格状态	数量 Reqd. QTY	易损属性 CONSUMABLE GRAD
1	380140339-0001	六角头法兰面螺栓	Hexagon bolt with flange	T320_M8_L=50;镀蓝白锌Q16	11	C
2	380650574-0001	油封	Oil seal	T490_d=40_D=52_b=7;	1	B
3	110820200-0001	曲轴箱盖	Crankcase cover	T231;	1	C
4	380600123-0001	定位销	ocation pin	T370_d=10_L=12;	2	C
5	171750043-0001	调速齿轮部件	Components of governor ge	T231_飞块重11.8g;	1	B
6	110830072-0001	曲轴箱盖密封垫	Crankcase cover gasket	T231;	1	A
7	380140067-0003	六角头法兰面螺栓	Hexagon bolt with flange	GB/T 5789_M6_L=12;镀蓝白锌Q16	3	C
8	110690116-0001	机油尺组合	Oil rule combination	T231_带机油尺导向管;	1	B
9	283690002-0001	油位报警器	Oil level alarm	T390_压力值(0.02~0.06)MPa;	1	A
10	380780084-0001	管接头	coupling	T240_M10×1_散热器用管接头;带附	1	C
11	380450514-0001	平垫圈	Flat washer	T040_T21_内径10_外径16_厚度1.5	1	C
12	150290019-0001	机油滤网	Engine oil Strainer	T390;	1	A

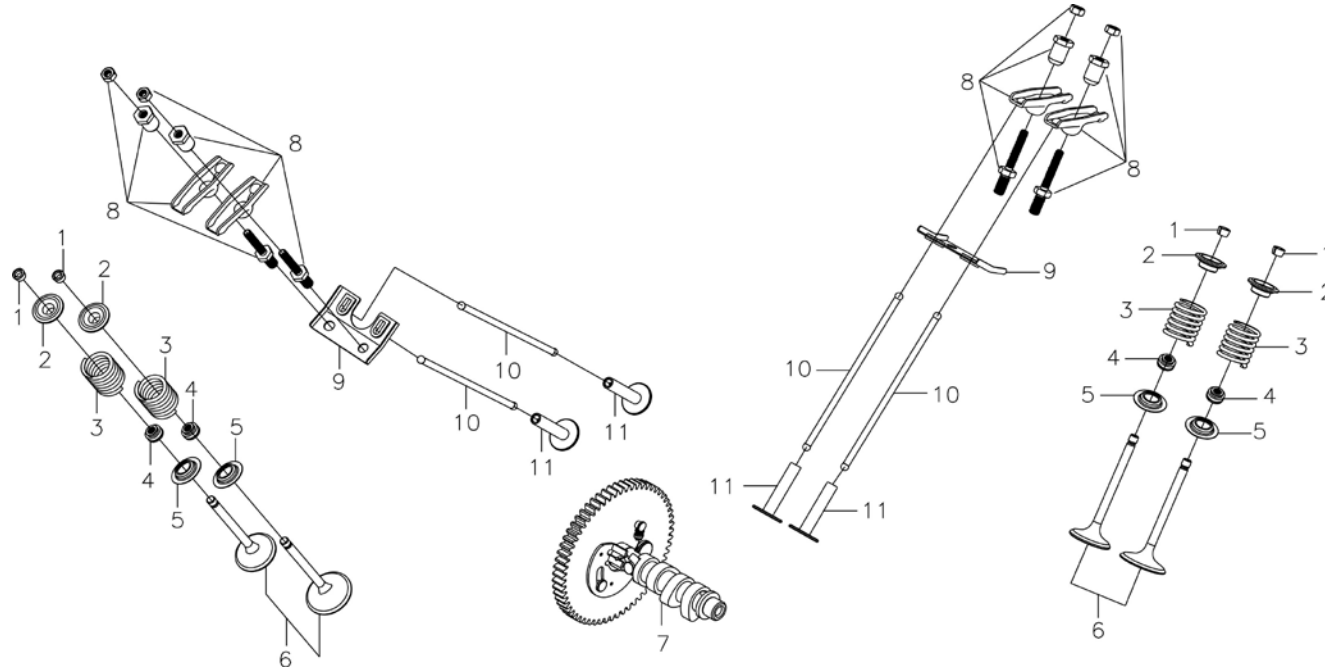




曲轴箱盖 (CRANKCASE COVER)

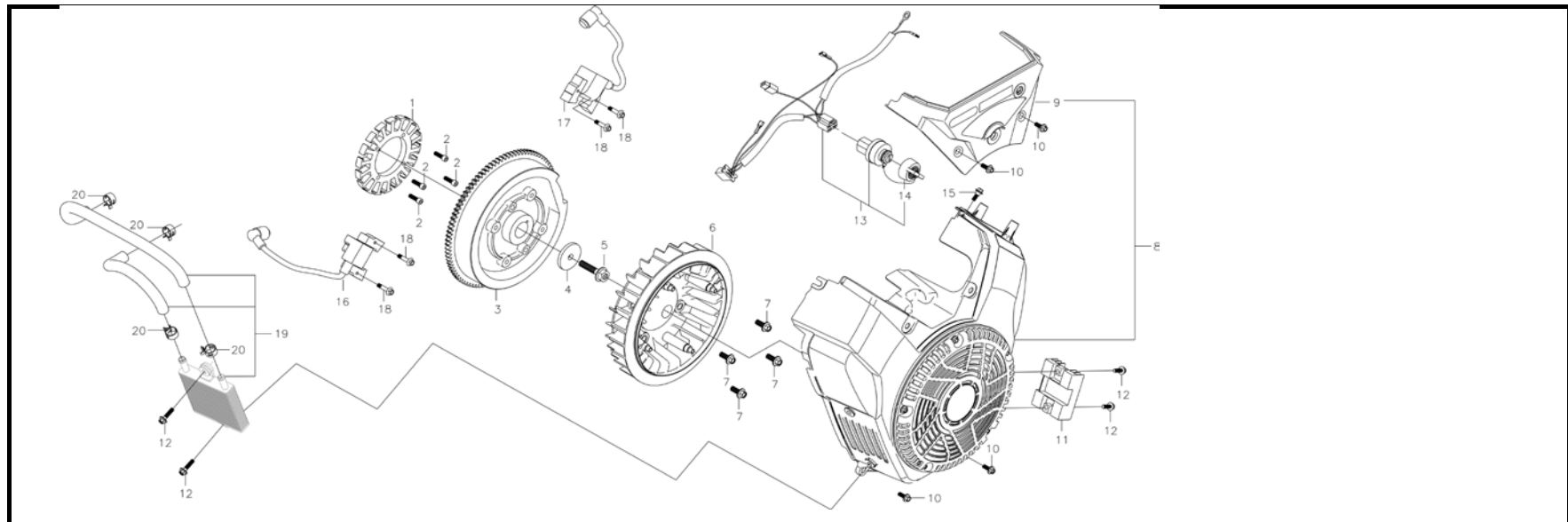
序号 No.	零部件件号 Part No.	零部件名称	Description	规格状态	数量 Reqd. QTY	易损属性 CONSUMABLE GRAD
13	150340012-0001	机油滤网盖	Cover,Oil Strainer	T390;	1	C
14	380140077-0005	六角头法兰面螺栓	Hexagon bolt with flange	GB/T 5789_M6_L=20;镀蓝白锌Q16	3	C
15	150010109-0001	机油泵部件	Components of oil pump	T231;	1	B
16	380640016-0001	钢球	Steel ball	GB/T 308_Φ9.5;	1	C
17	381150370-0001	压簧	Compression spring	T240_油泵弹簧;含Hg/Cr6/Pb/PBB/F	1	A
18	380840976-0001	密封圈	Seal ring	T230_D=41.6_d=3.5_氟橡胶;棕色	1	A
19	380600121-0001	定位销	ocation pin	T041_d=8_L=10;	2	C
20	150040053-0001	油泵盖	Oil pump cover	T231;	1	C





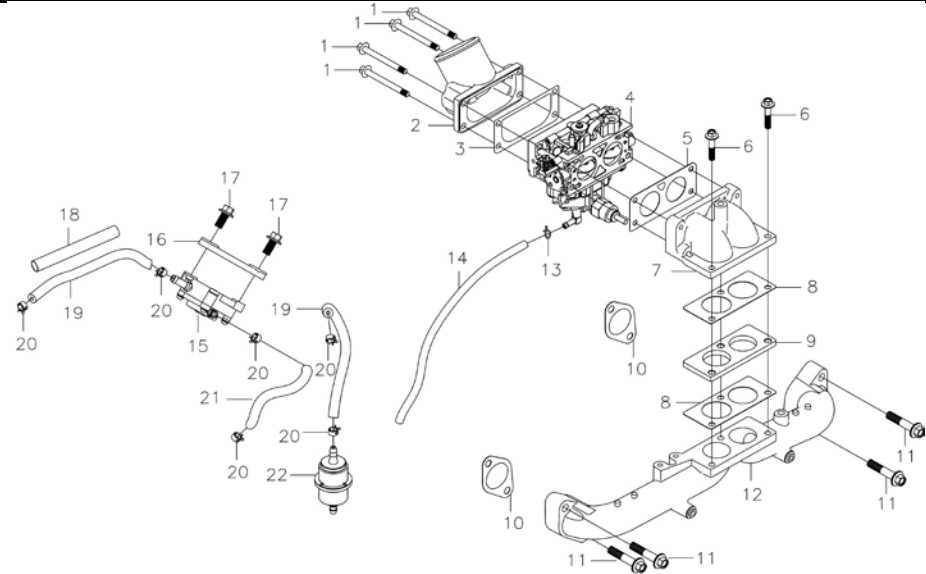
配气系统 (ROCKER,CAMSHAFT)

序号 No.	零部件件号 Part No.	零部件名称	Description	规格状态	数量	易损属性
					Reqd. QTY	CONSUMABLE GRAD
1	140390015-0001	气门调整帽	Valve adjustment cap	T11D;含Hg/Cr6/Pb/PBB/PBDE≤1000p	8	B
2	140380021-0001	气门锁夹	Valve locker	T11D_锁夹状态(通机)_排气门用;含Hg	4	B
3	140340025-0001	气门弹簧座	Retainer, valve spring	T11D_调软状态;含Hg/Cr6/Pb/PBB/PB	4	B
4	140400012-0001	气门内弹簧	Inner spring of valve	T110;含Hg/Cr6/Pb/PBB/PBDE≤1000p	4	B
5	140360010-0001	挡油罩	Valve oil seal	T110;含Hg/Cr6/Pb/PBB/PBDE≤1000p	4	B
6	500550037-0001	气门内弹簧座圈	Seat, valve spring	T390;	2	B
7	140020178-0001	气门套件	Valve Kit	T231;	1	B
8	140450062-0001	六角法兰面螺母	Hexagon nut with flange	T390_EPA3;	4	C
9	140710014-0001	双头螺栓	Stud	T390_EPA3;	2	C
10	140670037-0001	气门摇臂组合	Valve rocker combination	T09J_长156_整体实芯;	4	B
11	140690017-0001	挺杆组合	Push rod	T390;	4	B



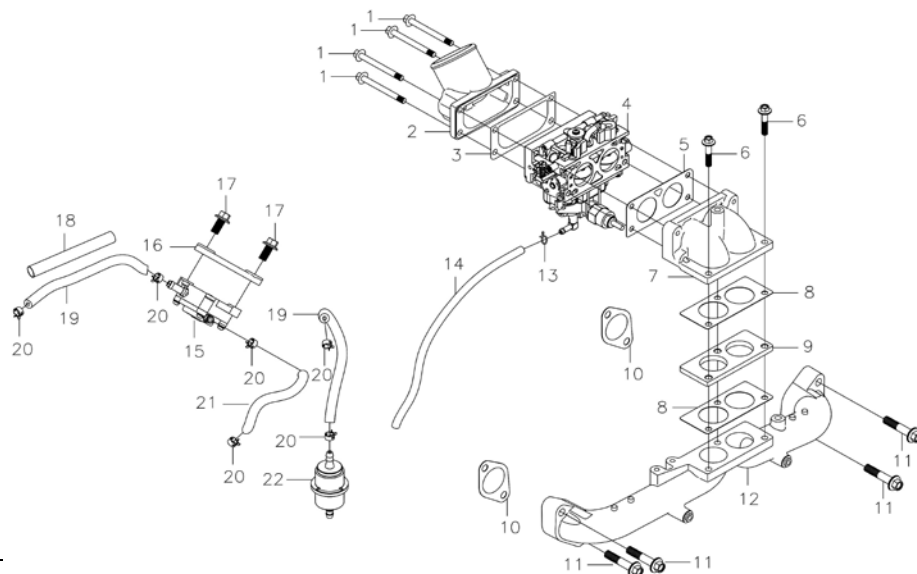
磁电机转子、风扇罩 (FLYWHEEL)

序号	零部件件号	零部件名称	Description	规格状态	数量	易损属性
No.	Part No.				Reqd. QTY	CONSUMABLE GRAD
1	270190060-0001	充电线圈部件	Components of charging cur	T231_多极带中间抽头,DC260W;输出线	1	A
2	380190008-0005	内六角螺钉	Socket head screw	GB/T 70.1_M6_L=20;镀蓝白锌Q16	4	C
3	270020357-0001	磁电机转子部件	FLYWHEEL COMP	T231;	1	B
4	380451020-0001	平垫圈	Flat washer	T230_内径13_外径45_厚度5_飞轮用;	1	C
5	380140457-0001	六角头法兰面螺栓	Hexagon bolt with flange	T390_M12x1.25_L=35_飞轮螺栓;镀蓝	1	C
6	160180020-0001	叶轮	Impeller	T390;	1	B
7	380140004-0004	六角头法兰面螺栓	Hexagon bolt with flange	GB/T 16674.1_M8_L=20;镀蓝白锌Q16	4	C
8	160210141-0001	风扇罩部件	Fan cover comp.	T231;	1	B
9	160710007-0001	风扇罩挡风板	Fan cover Windshield	T231;	1	C
10	380140013-0005	六角头法兰面螺栓	Hexagon bolt with flange	GB/T 5789_M6_L=16;镀蓝白锌Q16	4	C
11	270880261-0001	调压整流器	RectifierVariable voltage rec	T231_限流保护_防反接保护,DC260W	1	A
12	380140103-0004	六角头法兰面螺栓	Hexagon bolt with flange	GB/T 5789_M6_L=25;镀蓝白锌Q16	4	C
13	271810062-0001	启动控制开关	Start control switch	T230_点火开关钥匙带防尘胶套;	1	A
14	271340081-0001	点火开关钥匙	Ignition switch key	T230;	1	A
15	380020086-0001	六角头轴肩螺栓	Hexagon shaft shoulder bolt	T390_M6x16.8(Φ8x5.8);镀蓝白锌Q16	1	C
16	270920432-0001	点火线圈	COIL ASSY.,IGNNTION(L)	T231_左,不带二极管,黑色灌封料;	1	A
17	270920433-0001	点火线圈	COIL ASSY.,IGNNTION(R)	T231_右,不带二极管,黑色灌封料;	1	A
18	380140054-0003	六角头法兰面螺栓	Hexagon bolt with flange	GB/T 5789_M6_L=30;镀蓝白锌Q16	4	C
19	160010110-0001	散热器部件	Heat sink Part	T231_加强型_油管长273.5mm,另一根	1	B
20	380960223-0001	卡箍组合	Clip combination	T240 φ15.5;达克铬Q19	4	A

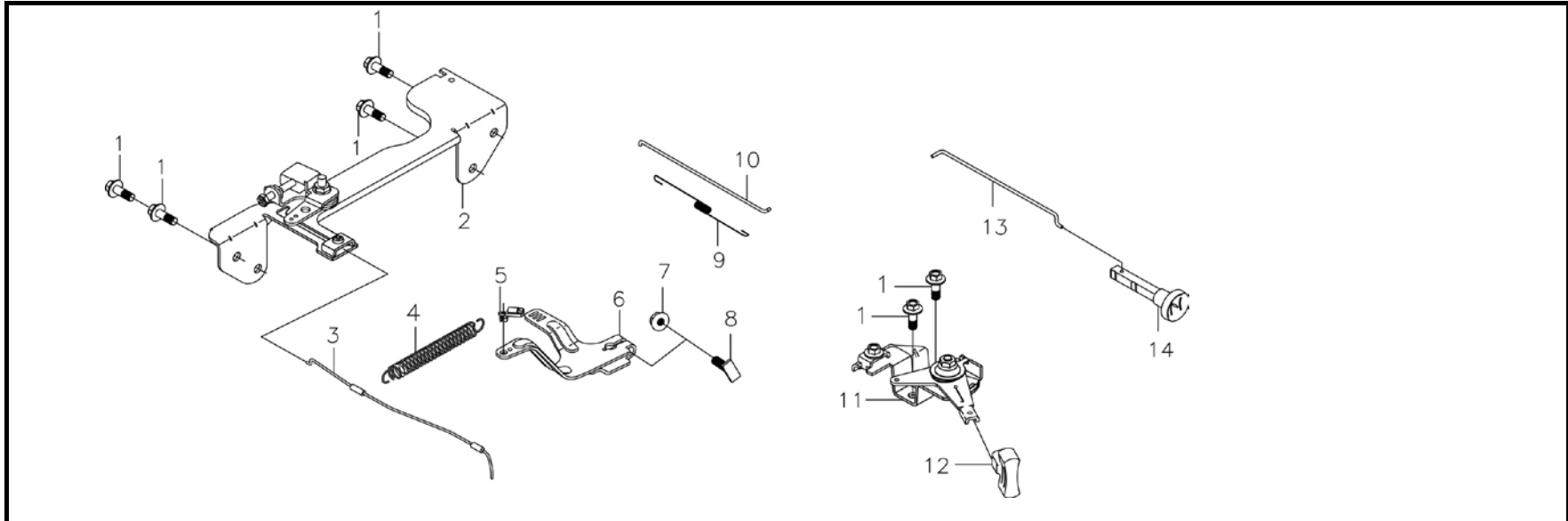


化油器 (CARBURETOR)

序号	零部件件号	零部件名称	Description	规格状态	数量	易损属性
No.	Part No.				Reqd. QTY	CONSUMABLE GRAD
1	380140375-0001	六角头法兰面螺栓	Hexagon bolt with flange	GB/T 5789_M6_L=85;镀蓝白锌Q16	4	C
2	180280130-0001	空滤器座	Air filter seat	T231_机组用_铝合金;	1	B
3	170430192-0001	化油器密封垫	Carburetor gasket	T230_空滤器垫;	1	A
4	170021972-0001	化油器	Carburetor	T231_双腔_机组60Hz_带电磁阀_喉口	1	B
5	170430191-0001	化油器密封垫	Carburetor gasket	T230_化油器转接头与化油器之间密封	1	A
6	380140054-0003	六角头法兰面螺栓	Hexagon bolt with flange	GB/T 5789_M6_L=30;镀蓝白锌Q16	2	C
7	180420661-0001	进气管	Intake pipe	T230_铝合金_化油器转接头;	1	C
8	170430190-0001	化油器密封垫	Carburetor gasket	T230_化油器转接头密封垫;	2	A
9	170440101-0001	化油器隔热垫	Heat insulating pad for carburetor	T230;	1	B
10	170430210-0001	化油器密封垫	Carburetor gasket	T231_进气口密封垫;	2	A
11	380140051-0005	六角头法兰面螺栓	Hexagon bolt with flange	GB/T 16674.1_M8_L=35;镀蓝白锌Q16	4	C
12	180420749-0001	进气管	Intake pipe	T231_双腔,铝合金;	1	C
13	380950188-0001	管夹	Pipe clip	T040_油管卡圈;	1	A



序号	零部件件号	零部件名称	Description	规格状态	数量	易损属性
No.	Part No.				Reqd. QTY	CONSUMABLE GRAD
14	380750942-0001	油管	Oil tube	T61Y_内径4_外径8_长350;含Hg/Cr6/F	1	A
15	170460019-0001	汽油泵	Gasoline pump	T231;	1	B
16	174680002-0001	汽油泵盖	COVER,FUEL PUMP	T231;	1	C
17	380140103-0004	六角头法兰面螺栓	Hexagon bolt with flange	GB/T 5789_M6_L=25;镀蓝白锌Q16	2	B
18	380770292-0001	保护套管	Protective sleeve	T400_内径14_壁厚0.5_长120_玻纤管;	1	A
19	380750381-0001	油管	Oil tube	T110_内径6.35_外径12.7_长185_防渗	2	A
20	380960120-0004	卡箍组合	Clip combination	T040_Φ12_钢带;达克铬Q19	6	A
21	380741320-0001	通气管	Breather tube	T231_异型_汽油泵通气管;	1	A
22	170010046-0001	燃油滤清器	Fuel filter	T381;	1	A



调速控制 (CONTROL)

序号 No.	零部件件号 Part No.	零部件名称	Description	规格状态	数量 Reqd. QTY	易损属性 CONSUMABLE GRAD
1	380140067-0003	六角头法兰面螺栓	Hexagon bolt with flange	GB/T 5789_M6_L=12;镀蓝白锌Q16	6	C
2	171730073-0001	调速支撑板	Support plate for speed regu	T231;镀蓝白锌Q16	1	B
3	171210615-0001	油门拉索	Throttle cable	T231_管长133_露出长度85_硬钢丝;	1	A
4	171600127-0001	调速弹簧	Governing spring	T231_19.75圈,长70;镀蓝白锌Q16	1	C
5	175030002-0001	节气门拉杆锁夹	Throttle locker	T230;	1	B
6	171620051-0002	调速支架	Speed regulating bracket	T231;带方头平端紧定螺钉/六角法兰面	1	C
7	380370066-0002	六角法兰面螺母	Hexagon nut with flange	GB/T 6177.1_不带防滑齿_M6;含Hg/C	1	C
8	380250003-0002	调速支架固定(方头)螺	Square head set screw with	T040_M6_L=21(16mm);调速支架固定	1	C
9	171610039-0001	节气门复位弹簧	throttle return spring	T231_30圈,长116;	1	A
10	171590042-0001	油门拉杆	Throttle rod	T231_长142;镀蓝白锌Q16	1	B
11	171680183-0001	油门操纵手柄组合	Throttle handle combination	T231_单机用;镀蓝白锌Q16	1	B
12	173710005-0001	油门手柄胶套	Throttle handle Rubber slee	T231;本色黑6#Q80	1	A
13	171650045-0001	阻风门拉杆	Choke valve pull rod	T231_长103;镀蓝白锌Q16	1	B
14	172920012-0001	阻风门手柄组合	Choke valve handle combina	T231_单机用;镀蓝白锌Q16	1	B









隆鑫通用动力股份有限公司

Loncin motor co., Ltd.

详细地址：重庆市九龙坡区九龙工业园区华龙大道99号

Add:No.99Hualong Road, Jiulongpo District, Chongqing, China

Tel:86 23 8980 5678/86 23 8980 8505

Fax:86 23 8906 7566

Email:service@loncinengine.com

Website:www.loncinengine.com

**PRINTED IN CHINA**

