

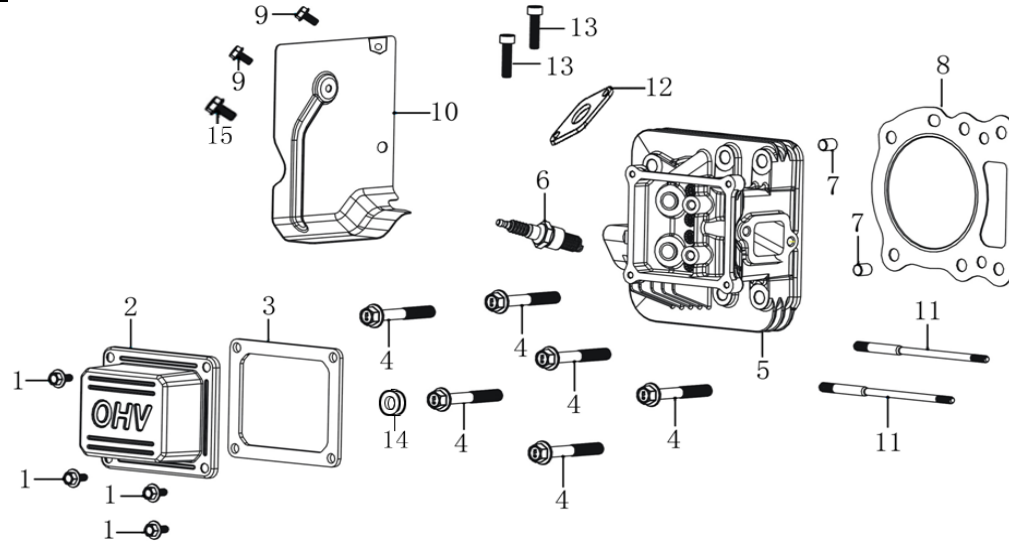


# 汽油机零部件

PART CATALOG

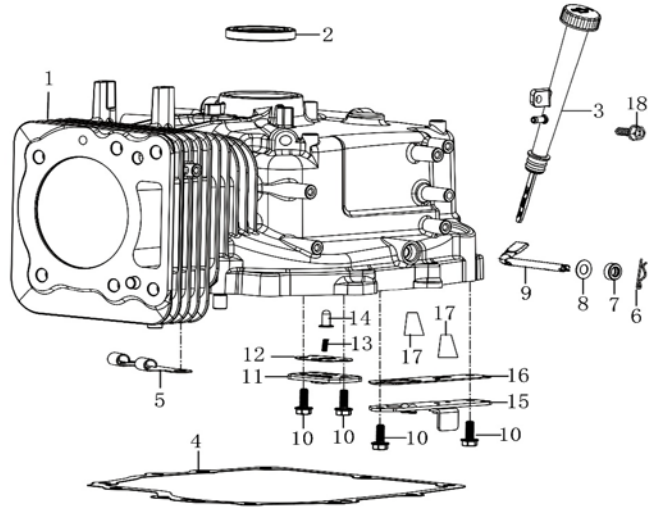
LC1P96F





### 气缸头 (CYLINDER HEAD)

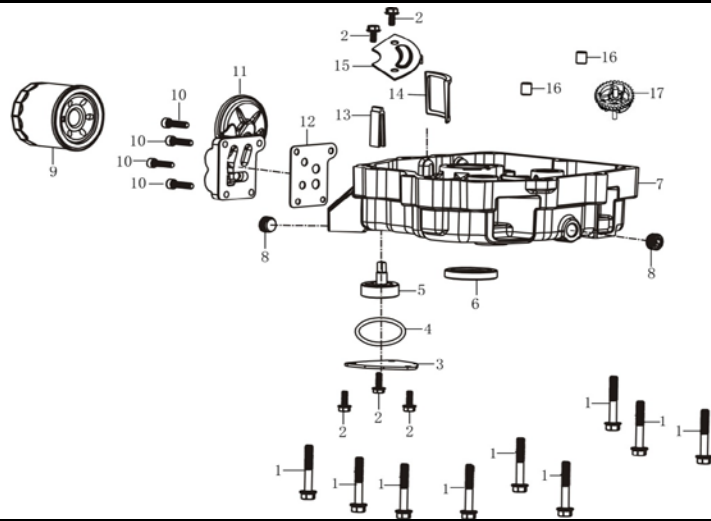
序号 No.	零部件图号 Part No.	零部件名称	Description	规格状态	数量 (Reqd. QTY)	易损属性	
						CONSUMABLE	GRADE
1	380140103-0004	六角头法兰面螺栓	Hexagon bolt with flange	GB/T 5789_M6_L=25;镀蓝白锌Q16	4		C
2	120230131-0001	气缸头盖组合	Cylinder head cover assy	T430_铝合金;	1		C
3	120250050-0001	气缸头盖密封垫	Gasket for cylinder head cover	T430_9016;	1		A
4	380140455-0001	六角头法兰面螺栓	Hexagon bolt with flange	T390_M10×1.25_L=70_缸头连接螺栓	6		C
5	120080839-0001	气缸头	Cylinder head	T430_增加安装孔,B款;	1		B
6	270960046-0001	火花塞	Spark plug	RN9YC;	1		A
7	380600123-0001	定位销	ocation pin	T370_d=10_L=12;	2		C
8	120150252-0001	气缸头密封垫	Gasket for cylinder head	T430_B款;	1		A
9	380140013-0005	六角头法兰面螺栓	Hexagon bolt with flange	GB/T 5789_M6_L=16;镀蓝白锌Q16	2		C
10	160190067-0001	空气导流罩	air deflector	T430_右;	1		C
11	380180154-0001	双头螺栓	Stud	T430_M8/6_L=147;	2		C
12	180650115-0001	排气口密封垫	Outlet gasket	T430_石墨;	1		A
13	380190168-0001	内六角螺钉	Socket head screw	T381_5/16-18UNC_L=22;镀蓝白锌Q16	2		C
14	380451128-0001	平垫圈	Flat washer	T440_内径10.5_外径22_厚度2.5;氧化	1		C
15	380140004-0004	六角头法兰面螺栓	Hexagon bolt with flange	GB/T 16674.1_M8_L=20;镀蓝白锌Q16	1		C



### 曲轴箱体(CRANK CASE)

序号 No.	零部件图号 Part No.	零部件名称	Description	规格状态	数量 (Reqd. QTY)	易损属性
						CONSUMABLE GRADE
1	110810395-0001	曲轴箱体	Crankcase body	T430_增加消声器安装孔,C款;	1	B
2	380650337-0001	油封	Oil seal	T110_d=35_D=52_b=7;含Hg/Cr6/Pb/	1	B
3	110690061-0001	机油尺组合	Oil rule combination	T430_机油尺_带密封圈,带汽油泵;本色	1	B
4	110830054-0001	曲轴箱盖密封垫	Crankcase cover gasket	T430;	1	A
5	380940625-0001	线夹	Cable cleat	T430_电磁阀用_半圆形;	1	A
6	381350004-0001	销夹	Pin clip	T040_调速臂用;	1	A
7	380650339-0001	油封	Oil seal	T110_d=8_D=14_b=4;含Hg/Cr6/Pb/F	1	B
8	380450559-0001	平垫圈	Flat washer	T370_内径8_外径16_厚度0.5;镀蓝白	1	C
9	171630020-0001	调速臂	Speed regulating arm	T381;	1	B
10	380140013-0005	六角头法兰面螺栓	Hexagon bolt with flange	GB/T 5789_M6_L=16;镀蓝白锌Q16	4	C
11	174570001-0001	调压阀盖	Regulator Cover	T430;	1	C
12	174550001-0001	调压阀密封垫	Regulator Seal	T430;	1	A
13	381150550-0001	压簧	Compression spring	T430_调压弹簧;	1	A

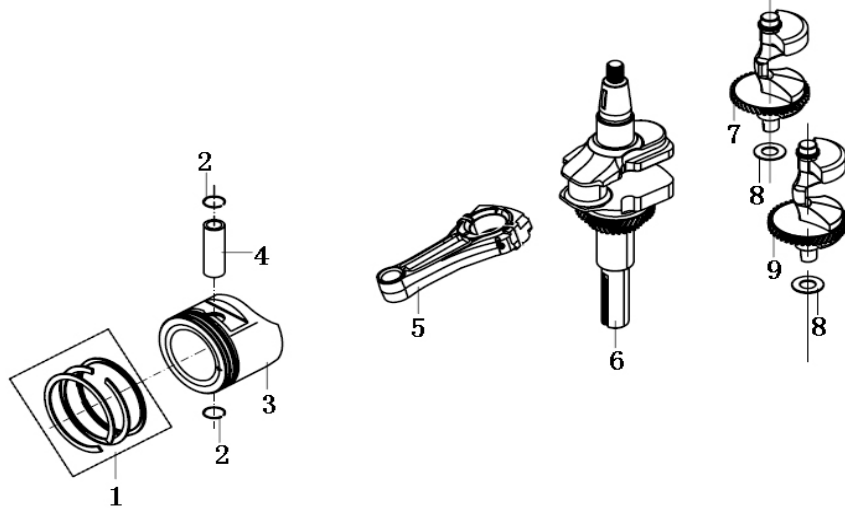




曲轴箱盖 (CRANKCASE COVER)

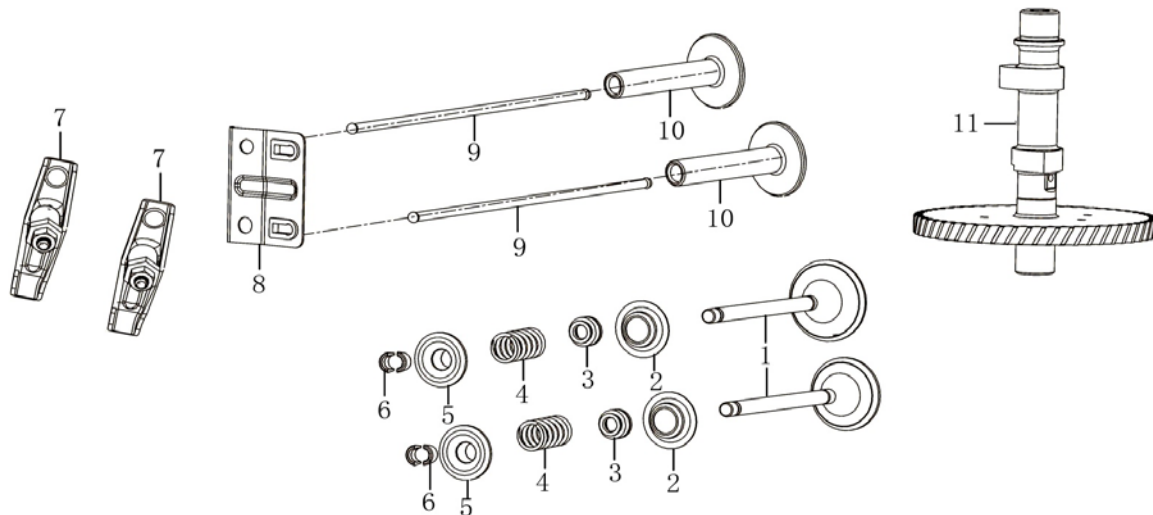
序号 No.	零部件图号 Part No.	零部件名称	Description	规格状态	数量 (Reqd. QTY)	易损属性
						CONSUMABLE GRADE
1	380140339-0001	六角头法兰面螺栓	Hexagon bolt with flange	T320_M8_L=50;镀蓝白锌Q16	10	C
2	380140013-0005	六角头法兰面螺栓	Hexagon bolt with flange	GB/T 5789_M6_L=16;镀蓝白锌Q16	5	C
3	150040033-0001	油泵盖	Oil pump cover	T430;	1	C
4	380840665-0001	密封圈	Seal ring	T390_D=47_d=3.5;	1	A
5	150010076-0001	机油泵部件	Components of oil pump	T430;	1	B
6	380650337-0001	油封	Oil seal	T110_d=35_D=52_b=7;含Hg/Cr6/Pb/	1	B
7	110820229-0001	曲轴箱盖	Crankcase cover	T430_B款;	1	C
8	110260026-0001	密封螺塞	Sealing plug screw	T370_3/8-18NPTF;氧化Q07	2	C
9	150350037-0001	机油精滤器组合	Oil filter	T430_短款;	1	B
10	380190039-0005	内六角螺钉	Socket head screw	GB/T 70.1_M6_L=25;镀蓝白锌Q16	4	C
11	150490013-0001	机油滤清器座	Engine oil filter seat	T430;	1	C
12	150910001-0001	机油滤清器座密封垫	Oil filter housing Gasket	T430;	1	A
13	150570003-0001	机油回油块	Engine oil return block	T370_丙稀酸脂;	1	A
14	150290025-0001	机油滤网	Engine oil Strainer	T430;	1	A





曲轴/活塞 (CRANKSHAFT/PISTON)

序号 No.	零部件图号 Part No.	零部件名称	Description	规格状态	数量 (Reqd. QTY)	易损属性 CONSUMABLE GRADE
1	130070182-0001	活塞环组合	Piston ring combination	T430;	1	A
2	380560057-0001	钢丝挡圈	Steel cable baffle ring	T110_活塞销挡圈;	2	B
3	130030205-0001	活塞	Piston	T430;	1	A
4	130060064-0001	活塞销	Piston pin	T430_φ20×55;	1	B
5	130150120-0001	连杆	Connecting rod	T470_M7加强;	1	B
6	130290397-0001	曲轴部件	crankshaft	T430;	1	B
7	130450027-0001	平衡轴	Balancing shaft	T430_A;	1	B
8	380450895-0001	平垫圈	Flat washer	T430_内径20.2_外径34_厚度1;抛光Q	2	B
9	130450028-0001	平衡轴	Balancing shaft	T430_B;	1	B

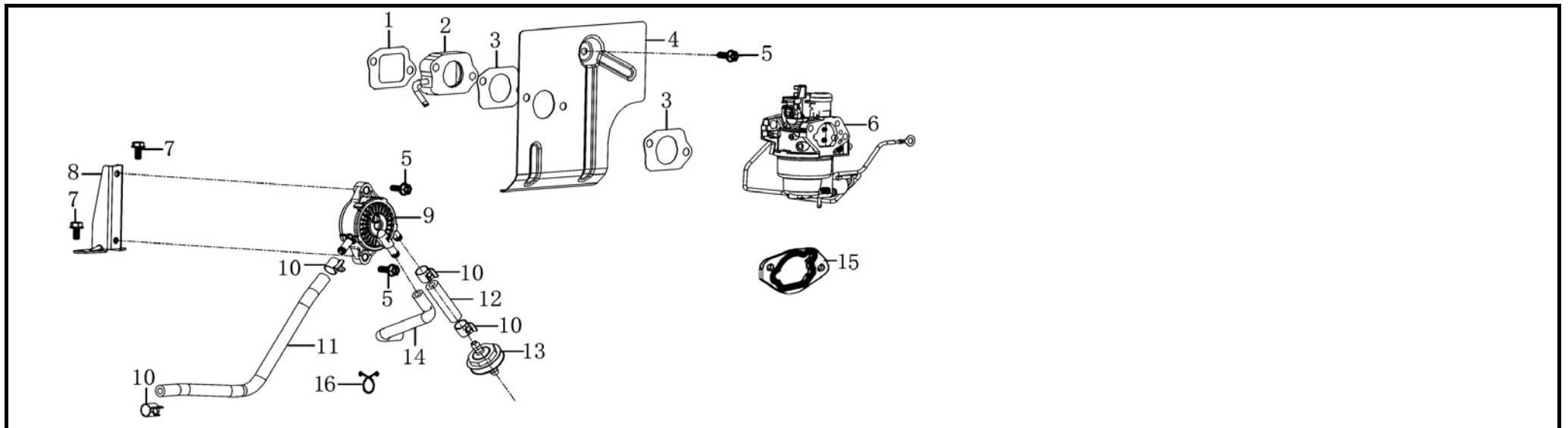


### 配气系统(GAS DISTRIBUTION ADJUSTMENT)

序号 No.	零部件图号 Part No.	零部件名称	Description	规格状态	数量 (Reqd. QTY)	易损属性
						CONSUMABLE GRADE
1	500550064-0001	气门套件	Valve Kit	T430;	1	B
2	140360010-0001	气门内弹簧座圈	Seat, valve spring	T110;含Hg/Cr6/Pb/PBB/PBDE≤1000p	2	B
3	140400012-0001	挡油罩	Valve oil seal	T110;含Hg/Cr6/Pb/PBB/PBDE≤1000p	2	B
4	140340025-0001	气门内弹簧	Inner spring of valve	T11D_调软状态;含Hg/Cr6/Pb/PBB/PE	2	B
5	140380021-0001	气门弹簧座	Retainer, valve spring	T11D_锁夹状态(通机)_排气门用;含Hg	2	B
6	140390015-0001	气门锁夹	Valve locker	T11D;含Hg/Cr6/Pb/PBB/PBDE≤1000p	4	B
7	140450065-0001	气门摇臂组合	Valve rocker combination	T430_摇臂厚度2mm;螺栓螺母取消发	2	B
8	140710012-0001	推杆限位板组合	Plate, push rod guide	T430;	1	B
9	140670036-0001	挺杆组合	Push rod	T430;	2	B
10	140690004-0001	挺柱	Lifter, Valve	T110;含Hg/Cr6/Pb/PBB/PBDE≤1000p	2	B
11	140020101-0001	凸轮轴组合	Camshaft assy	T430;	1	B



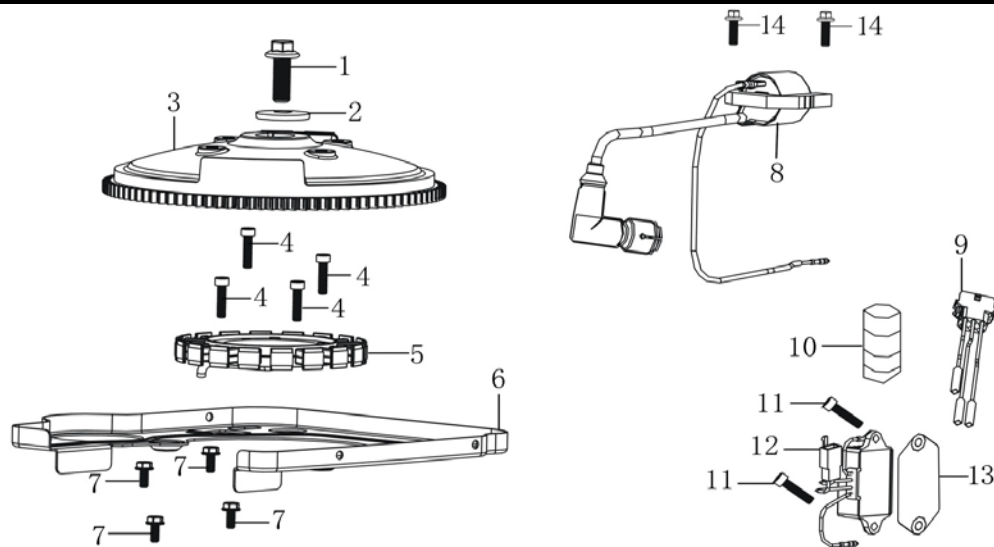




### 化油器 (CARBURETOR)

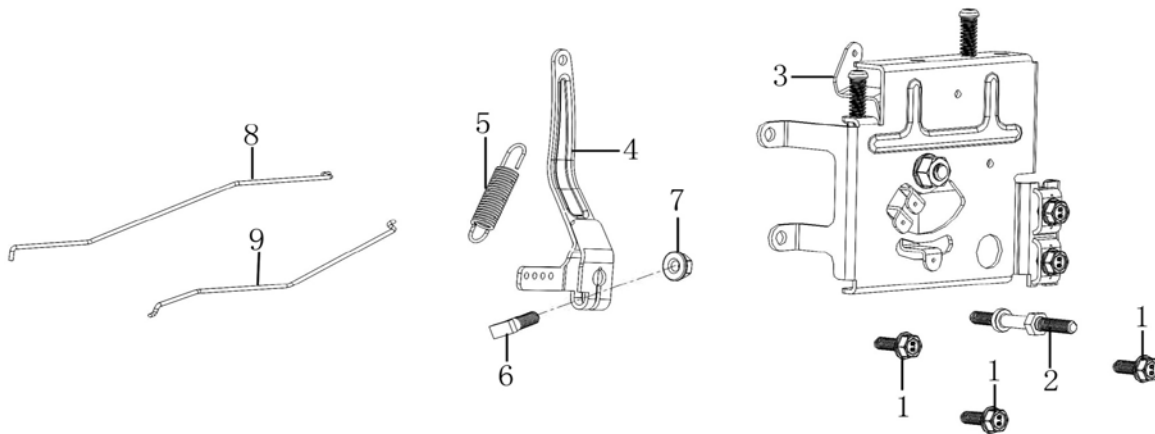
序号 No.	零部件图号 Part No.	零部件名称	Description	规格状态	数量 (Reqd. QTY)	易损属性	
						CONSUMABLE	GRADE
1	170430154-0001	化油器密封垫	Carburetor gasket	T430_进气口密封垫;	1		A
2	170440081-0001	化油器隔热垫	Heat insulating pad for carburetor	T430;	1		B
3	170430153-0001	化油器密封垫	Carburetor gasket	T430_化油器与空气导流罩之间的密封	2		A
4	160190066-0001	空气导流罩	air deflector	T430_左;	1		C
5	380140013-0005	六角头法兰面螺栓	Hexagon bolt with flange	GB/T 5789_M6_L=16;镀蓝白锌Q16	3		C
6	170022114-0001	化油器	Carburetor	T430_内平衡_针阀孔为Φ1.2,带电磁阀	1		B
7	380140067-0003	六角头法兰面螺栓	Hexagon bolt with flange	GB/T 5789_M6_L=12;镀蓝白锌Q16	2		C
8	170470008-0001	汽油泵支架	Gasoline pump bracket	T430;	1		C
9	170460010-0001	汽油泵	Gasoline pump	T381;	1		B
10	380960120-0004	卡箍组合	Clip combination	T040_Φ12_钢带;达克铬Q19	4		A
11	380750401-0001	油管	Oil tube	T040_内径6.35_外径12.7_长270_CA	1		A
12	380750435-0001	油管	Oil tube	T370_内径6.35_外径12.7_长105_CA	1		A
13	170010018-0001	燃油滤清器	Fuel filter	T370;	1		A





飞轮/点火线圈 (FLYWHEEL/COIL ASSY.)

序号 No.	零部件图号 Part No.	零部件名称	Description	规格状态	数量 (Reqd. QTY)	易损属性 CONSUMABLE GRADE
1	380140457-0001	六角头法兰面螺栓	Hexagon bolt with flange	T390_M12×1.25_L=35_飞轮螺栓;镀蓝	1	C
2	380450702-0001	平垫圈	Flat washer	T390_内径13_外径38_厚度3.5;氧化G	1	C
3	270020222-0001	磁电机转子部件	FLYWHEEL COMP	T430;	1	B
4	380190039-0005	内六角螺钉	Socket head screw	GB/T 70.1_M6_L=25;镀蓝白锌Q16	4	C
5	270190020-0001	充电线圈部件	Components of charging current armature	T430;	1	A
6	160200059-0001	发动机导流罩	Side plate	T430_取消导风孔;	1	C
7	380140013-0005	六角头法兰面螺栓	Hexagon bolt with flange	GB/T 5789_M6_L=16;镀蓝白锌Q16	4	C
8	270920339-0001	点火线圈	COIL ASSY.,IGNNTION	T430_抗干扰_橡胶火花塞帽;	1	A
9	271280100-0001	连接线	Connecting wire	T430_尼龙端子_整流器输出线,加一根	1	A
11	380190008-0005	内六角螺钉	Socket head screw	GB/T 70.1_M6_L=20;镀蓝白锌Q16	2	C
12	270880157-0001	调压整流器	Rectifier/Variable voltage rectifier	T430;	1	A
13	181600035-0001	隔热垫	Insulation Gasket	T430_尼龙;黑色	1	B
14	380140077-0005	六角头法兰面螺栓	Hexagon bolt with flange	GB/T 5789_M6_L=20;镀蓝白锌Q16	2	C



### 调速控制系统 (CONTROL SYSTEM)

序号 No.	零部件图号 Part No.	零部件名称	Description	规格状态	数量 (Reqd. QTY)	易损属性
						CONSUMABLE GRADE
1	380140013-0005	六角头法兰面螺栓	Hexagon bolt with flange	GB/T 5789_M6_L=16;镀蓝白锌Q16	3	C
2	380180153-0001	双头螺栓	Stud	T430_双头台阶_M6/6_L=57;	1	C
3	171680116-0001	油门操纵手柄组合	Throttle handle combination	T430_可调弹簧挂孔;	1	B
4	171620031-0002	调速支架	Speed regulating bracket	T430;带方头平端紧定螺钉/六角法兰面	1	C
5	171600074-0001	调速弹簧	Governing spring	T430_21圈,簧径1.4,长53;	1	A
6	380250002-0001	方头平端紧定螺钉	Square head set screw with flat point	040_M6_L=21(13mm);调速支架固定	1	C
7	380370066-0001	六角法兰面螺母	Hexagon nut with flange	GB/T 6177.1_不带防滑齿_M6;镀蓝白	1	C
8	171590022-0001	油门拉杆	Throttle rod	T430_总长248,杆径φ2.3;	1	B
9	171650033-0001	阻风门拉杆	Choke valve pull rod	T430_缩短2mm;	1	B





