



汽油机零部件图册

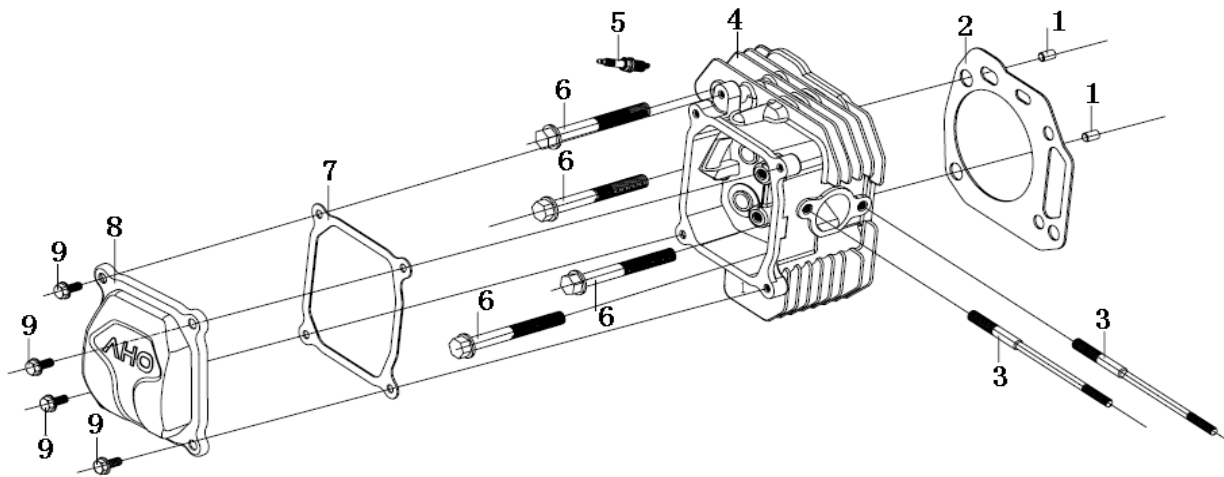
PART CATALOGUE

LC1P90F-1



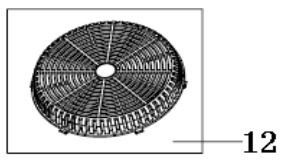
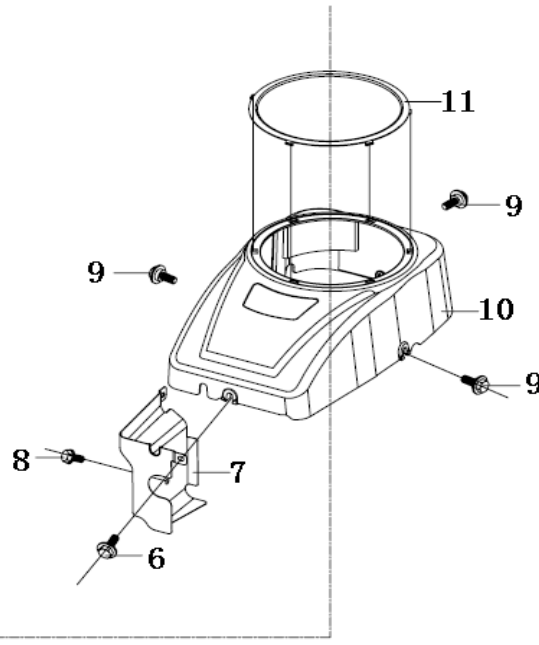
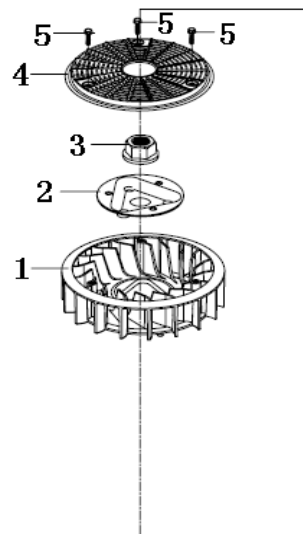
隆鑫通用动力股份有限公司

LONCIN MOTOR CO.,LTD.



气缸头 (Gear Box Assy)

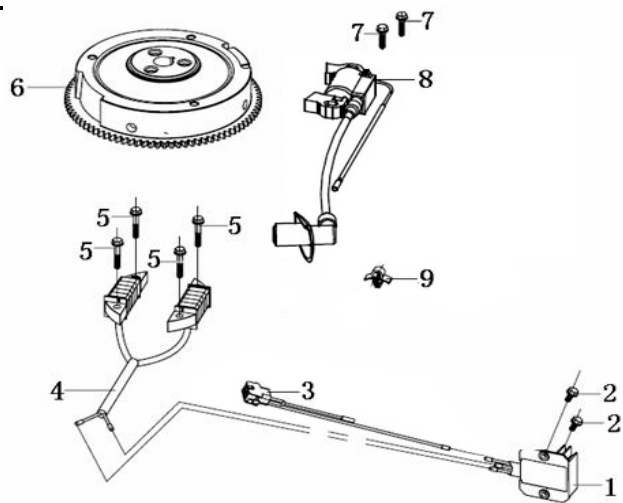
序号	零部件件号	零部件名称	Description	规格状态	数量	易损属性
No.	Part No.				Reqd. QTY	CONSUMABLE GRADE
1	380600116-0001	定位销	ocation pin	T110_d=12_L=20;	2	C
2	120150164-0001	气缸头密封垫	Gasket for cylinder head	T372_石墨;	1	A
3	380180088-0001	双头螺栓	Stud	T370_M6/8_L=138;镀蓝白锌Q16	2	C
4	120080436-0001	气缸头	Cylinder head	T381;	1	B
5	270960028-0002	火花塞	Spark plug	RC12YC;Cr3+钝化	1	A
6	380140335-0001	六角头法兰面螺栓	Hexagon bolt with flange	T370_M10×1.25_L=85;镀蓝白锌Q16	4	C
7	120250028-0001	气缸头盖密封垫	Gasket for cylinder head cover	T381_软木橡胶板;	1	A
8	120220032-0001	气缸头盖组合	Cylinder head cover assy	T381;	1	C
9	380020070-0001	六角头轴肩螺栓	Hexagon shaft shoulder bolt	T370_M6×16.5(Φ8×3.5);镀蓝白锌Q16	4	C



零件12可以代替零件4和11，客户可以根据需求选择。

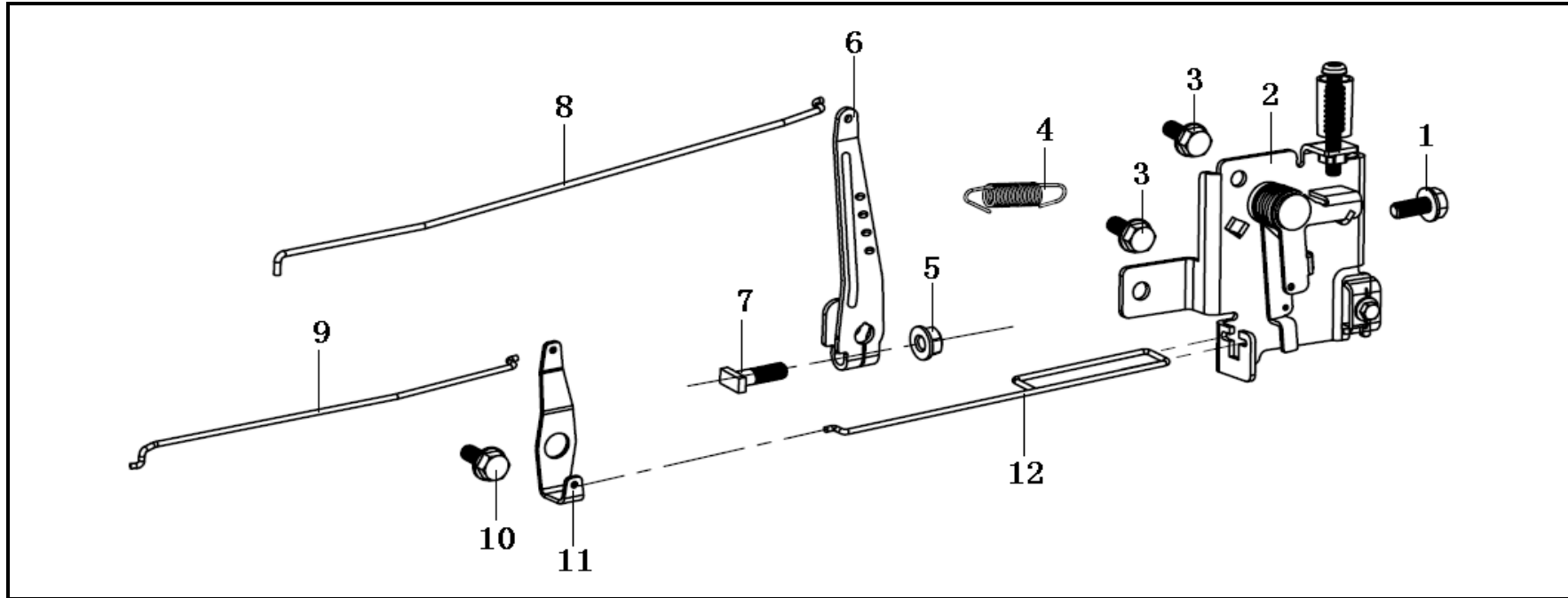
导风部件 (Blower Housing)

序号	零部件件号	零部件名称	Description	规格状态	数量	易损属性
No.	Part No.				Reqd. QTY	CONSUMABLE GRADE
1	160180024-0001	叶轮	Impeller	T381;	1	B
2	193590013-0001	起动盘	Starting disc	T370;镀蓝白锌Q16	1	C
3	380370050-0001	六角法兰面螺母	Hexagon nut with flange	T110_M16×1.5;镀蓝白锌Q16	1	C
6	380020087-0001	六角头轴肩螺栓	Hexagon shaft shoulder bolt	T390_M6×21.8(Φ8×10.8);镀蓝白锌Q16	1	C
7	160190050-0001	空气导流罩	air deflector	T381_2#;	1	B
8	380140067-0003	六角头法兰面螺栓	Hexagon bolt with flange	GB/T 5789_M6_L=12;镀蓝白锌Q16	1	C
9	380020070-0001	六角头轴肩螺栓	Hexagon shaft shoulder bolt	T370_M6×16.5(Φ8×3.5);镀蓝白锌Q16	3	C
10	160210046-0001	风扇罩部件	Fan cover comp.	T381;	1	B
12	195360009-0003	起动器外罩	Starter outer cover	T381;黑坯	1	B



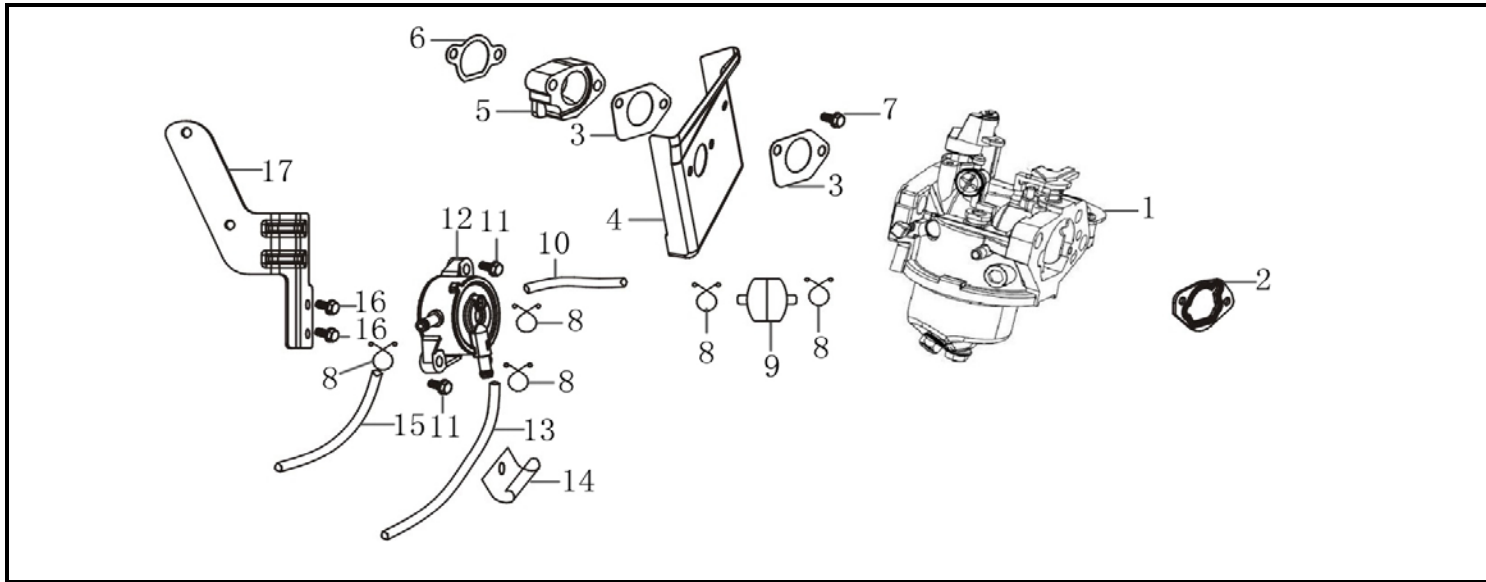
点火系统 (Flywheel)

序号	零部件件号	零部件名称	Description	规格状态	数量	易损属性
No.	Part No.				Reqd. QTY	CONSUMABLE GRADE
1	270880173-0001	调压整流器	RectifierVariable vol	T440;	1	A
2	380140067-0003	六角头法兰面螺栓	Hexagon bolt with fla	GB/T 5789_M6_L=12;镀蓝白锌Q16	2	C
3	271280071-0001	连接线	Connecting wire	T440_整流器输出线;	1	A
4	270190031-0001	充电线圈部件	Components of chargin	T381_尼龙端子;	1	A
5	380140054-0003	六角头法兰面螺栓	Hexagon bolt with fla	GB/T 5789_M6_L=30;镀蓝白锌Q16	4	C
6	270020229-0001	磁电机转子部件	FLYWHEEL COMP	T370_取消磁钢护板;	1	B
7	380140103-0004	六角头法兰面螺栓	Hexagon bolt with fla	GB/T 5789_M6_L=25;镀蓝白锌Q16	2	C
8	270920251-0004	点火线圈	COIL ASSY., IGNNTION	T370_抗干扰,带5kΩ金属屏蔽帽;尼龙端子	1	B
9	380930113-0001	定位线卡	Location wire nail	T381_燕尾卡;	1	B



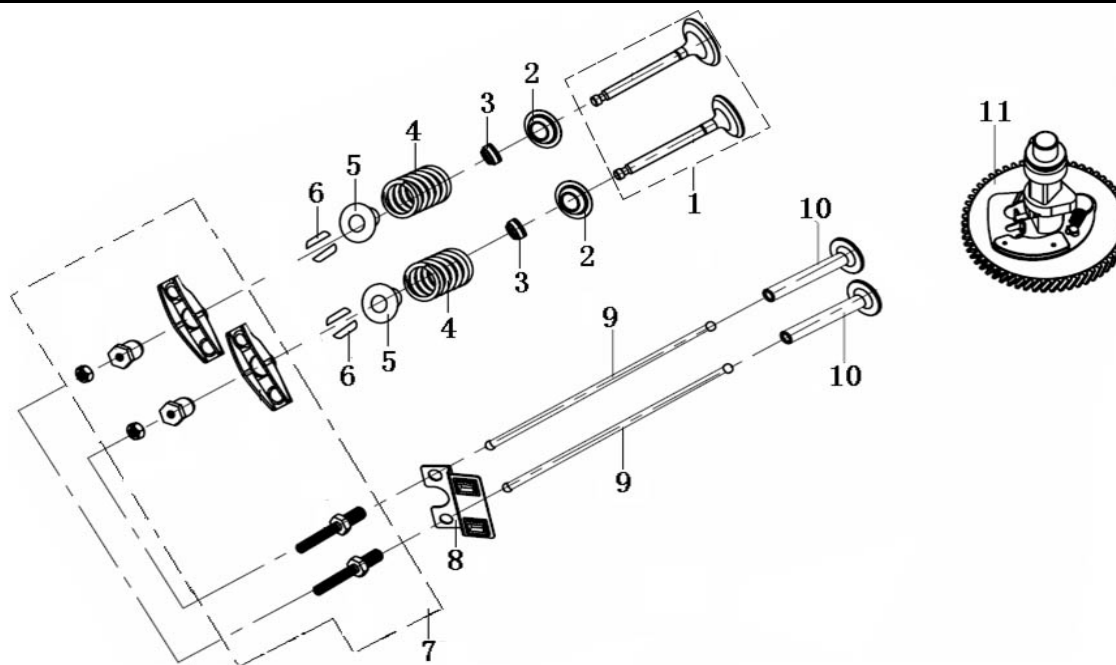
调速控制系统 (Governor)

序号	零部件件号	零部件名称	Description	规格状态	数量	易损属性
No.	Part No.				Reqd. QTY	CONSUMABLE GRADE
1	380140013-0005	六角头法兰面螺栓	Hexagon bolt with flange	GB/T 5789_M6_L=16;镀蓝白锌Q16	1	C
2	171680158-0001	油门操纵手柄组合	Throttle handle combinat	T370_B款,螺母紧固;	1	B
3	380140209-0001	六角头法兰面螺栓	Hexagon bolt with flange	GB/T 5789_M6_L=14;镀蓝白锌Q16	2	C
4	171600020-0001	调速弹簧	Governing spring	T370;	1	A
5	380370066-0001	六角法兰面螺母	Hexagon nut with flange	GB/T 6177.1_不带防滑齿_M6;镀蓝白锌Q16	1	C
6	171620013-0003	调速支架	Speed regulating bracket	T370;带方头平端紧定螺钉/六角法兰面螺母_不带防	1	C
7	380250002-0001	方头平端紧定螺钉	Square head set screw wi	T040_M6_L=21(13mm);调速支架固定	1	C
8	171590013-0001	油门拉杆	Throttle rod	T370;	1	B
9	171490002-0001	阻风门杆	Choke valve bar	T370;	1	B
10	380020071-0001	六角头轴肩螺栓	Hexagon shaft shoulder b	T370_M6×15(Φ10×1.8);镀蓝白锌Q16	1	C
11	171480013-0001	阻风门支架	Choke valve bracket	T370;	1	C
12	171650003-0001	阻风门拉杆	Choke valve pull rod	T370;	1	B



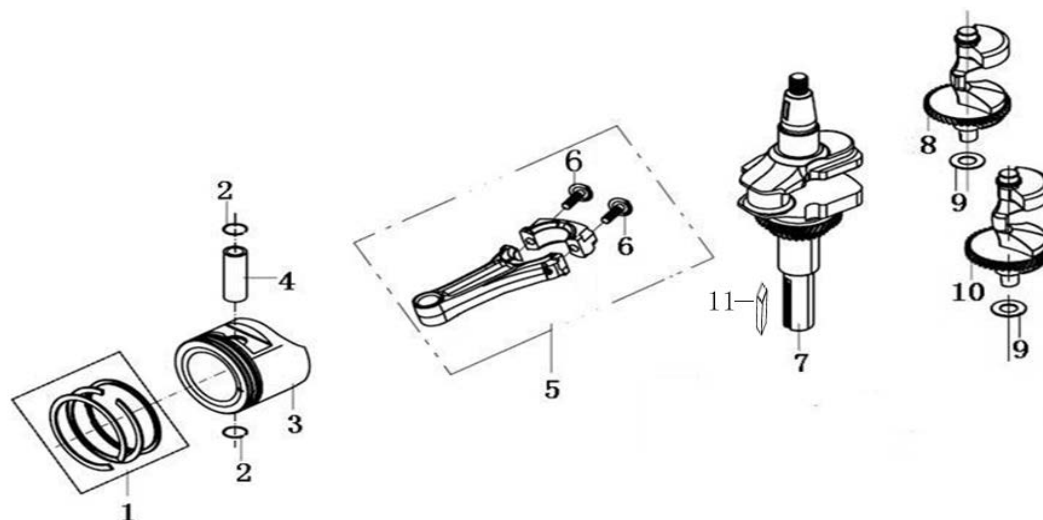
化油器 (Carburetor With Pump)

序号	零部件件号	零部件名称	Description	规格状态	数量	易损属性
No.	Part No.				Reqd. QTY	CONSUMABLE GRADE
1	170021010-0001	化油器	Carburetor	T371_CARB状态_不带电磁阀, 防篡改; 铜镀镍针阀	1	B
2	170430173-0001	化油器密封垫	Carburetor gasket	T440_氟橡胶_空滤器垫; 红色	1	B
3	170430099-0001	化油器密封垫	Carburetor gasket	T370_interface(N-8092)材料_化油器与空气导流罩之间	2	A
4	160190049-0001	空气导流罩	air deflector	T381_1#;	1	C
5	170440053-0001	化油器隔热垫	Heat insulating pad for	T370;	1	B
6	170430101-0001	化油器密封垫	Carburetor gasket	T370_interface(N-8092)材料_进气管密封垫;	1	A
7	380140067-0003	六角头法兰面螺栓	Hexagon bolt with flang	GB/T 5789_M6 L=12; 镀蓝白锌Q16	1	C
8	380950193-0001	管夹	Pipe clip	T370_Φ11_油管卡圈;	2	A
9	170010018-0001	燃油滤清器	Fuel filter	T370;	1	A
10	380750200-0002	油管	Oil tube	T370_内径6.5_外径11_长105; 满足ROHS要求	1	A
11	380140013-0005	六角头法兰面螺栓	Hexagon bolt with flang	GB/T 5789_M6 L=16; 镀蓝白锌Q16	2	C
12	170460010-0001	汽油泵	Gasoline pump	T381;	1	B
13	380750188-0002	油管	Oil tube	T370_内径6.5_外径11_长380_汽油泵通气管; 满足ROHS要	1	A
14	380950197-0001	管夹	Pipe clip	T370_通气管;	1	A
15	380750336-0002	油管	Oil tube	T370_内径6.5_外径11_长285; 满足ROHS要求	1	A
16	380140077-0005	六角头法兰面螺栓	Hexagon bolt with flang	GB/T 5789_M6 L=20; 镀蓝白锌Q16	2	C
17	170470005-0001	汽油泵支架	Gasoline pump bracket	T370_带加强筋;	1	C



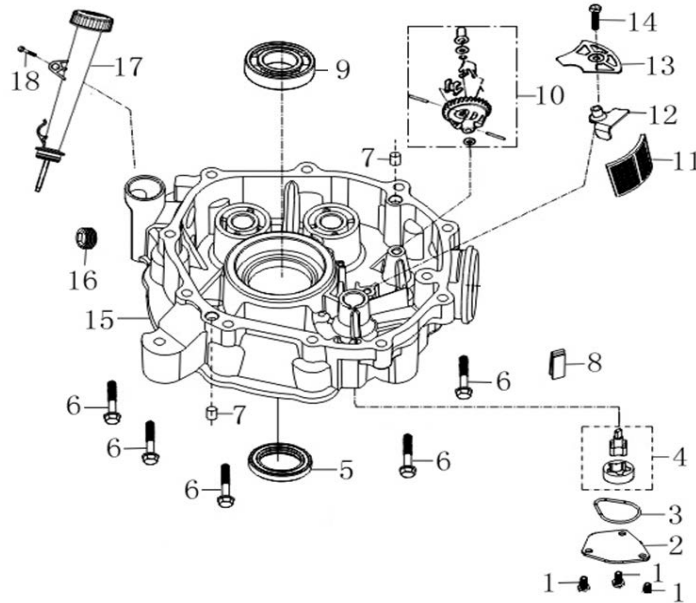
配气机构 (Valve)

序号 No.	零部件件号 Part No.	零部件名称	Description	规格状态	数量	易损属性
					Reqd. QTY	CONSUMABLE GRADE
1	500550039-0001	气门套件	Valve Kit	T381;	1	B
2	140360010-0001	气门内弹簧座圈	Seat, valve spring	T110; 含Hg/Cr6/Pb/PBB/PBDE≤1000ppm, Cd≤100ppm	1	B
3	140400012-0001	挡油罩	Valve oil seal	T110; 含Hg/Cr6/Pb/PBB/PBDE≤1000ppm, Cd≤100ppm	2	B
4	140340025-0001	气门内弹簧	Inner spring of val	T11D_调软状态; 含Hg/Cr6/Pb/PBB/PBDE≤1000ppm, Cd≤100ppm	2	B
5	140380021-0001	气门弹簧座	Retainer, valve spr	T11D_锁夹状态(通机)_排气门用; 含Hg/Cr6/Pb/PBB/PBDE≤1000ppm	2	B
6	140390015-0001	气门锁夹	Valve locker	T11D; 含Hg/Cr6/Pb/PBB/PBDE≤1000ppm, Cd≤100ppm	2	B
7	140450041-0001	气门摇臂组合	Valve rocker combin	T381;	4	B
8	140710011-0001	推杆限位板组合	Plate, push rod gui	T381;	2	B
9	140670030-0001	挺杆组合	Push rod	T370_整体式;	2	B
10	140690004-0001	挺柱	Lifter, Valve	T110; 含Hg/Cr6/Pb/PBB/PBDE≤1000ppm, Cd≤100ppm	2	B
11	140020055-0001	凸轮轴组合	Camshaft assy	T370;	2	B



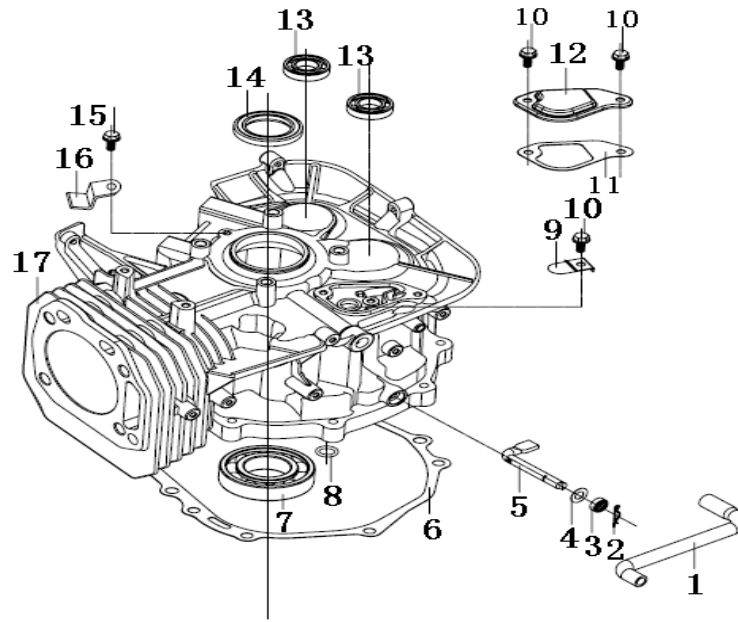
曲柄连杆 (Crankshaft)

序号	零部件件号	零部件名称	Description	规格状态	数量	易损属性
No.	Part No.				Reqd. QTY	CONSUMABLE GRADE
1	130070161-0001	活塞环组合	Piston ring combinati	T371_一环槽宽1.2, 二环槽宽1.5;	1	A
2	380560057-0001	钢丝挡圈	Steel cable baffle ri	T110_活塞销挡圈;	2	B
3	130030165-0001	活塞	Piston	T372;	1	A
4	130060034-0001	活塞销	Piston pin	T110_φ20×62; 含Hg/Cr6/Pb/PBB/PBDE≤1000ppm, Cd≤	1	2
5	130150048-0001	连杆	Connecting rod	T370;	1	B
6	130180009-0001	连杆螺栓	Connecting rod bolt	T370;	2	C
7	130290102-0001	曲轴部件	crankshaft	T370_A轴;	1	B
8	130450033-0001	平衡轴	Balancing shaft	T370_A, 齿加厚;	1	B
9	380450560-0001	平垫圈	Flat washer	T370_内径17_外径30_厚度1.5; 氧化Q07	2	C
10	130450034-0001	平衡轴	Balancing shaft	T370_B, 齿加厚;	1	B
11	380620034-0001	键	Key	GB/T1095_L=54_6×6.3_A型;	1	B



曲轴箱盖 (Crankshaft Cover)

序号	零部件件号	零部件名称	Description	规格状态	数量	易损属性
No.	Part No.				Reqd. QTY	CONSUMABLE GRADE
1	380140013-0005	六角头法兰面螺栓	Hexagon bolt with flange	GB/T 5789_M6_L=16; 镀蓝白锌Q16	3	C
2	150040019-0001	油泵盖	Oil pump cover	T370;	1	C
3	380840467-0001	密封圈	Seal ring	T370_机油泵密封圈_丙烯酸脂CII;	1	A
4	150010073-0001	机油泵部件	Components of oil pump	T381;	1	B
5	380650337-0001	油封	Oil seal	T110_d=35_D=52_b=7; 含Hg/Cr6/Pb/PBB/PBDE≤10	1	B
6	380140447-0001	六角头法兰面螺栓	Hexagon bolt with flange	T370_M8_L=40_S=12; 镀蓝白锌Q16	10	C
7	380600123-0001	定位销	ocation pin	T370_d=10_L=12;	2	C
8	150570003-0001	机油回油块	Engine oil return block	T370_丙烯酸脂;	1	B
9	380630141-0002	轴承	Bearing	GB/T 276_6207;	1	B
10	171750004-0001	调速齿轮部件	Components of governor	T110;	1	B
11	150290022-0001	机油滤网	Engine oil Strainer	T370_弧形;	1	A
12	120530002-0001	油道压板	Pressing plate for oil	T370;	1	C
13	150340013-0001	机油滤网盖	Cover, Oil Strainer	T381_取消冲孔;	1	B
14	380140103-0004	六角头法兰面螺栓	Hexagon bolt with flange	GB/T 5789_M6_L=25; 镀蓝白锌Q16	1	C



曲轴箱 (Crank Case Comp)

序号	零部件件号	零部件名称	Description	规格状态	数量	易损属性
No.	Part No.				Reqd. QTY	CONSUMABLE GRADE
1	380740462-0002	通气管	Breather tube	T370_异型_丁腈橡胶_废气管;满足ROHS要求	1	A
2	381350004-0001	销夹	Pin clip	T040_调速臂用;	1	B
3	380650339-0001	油封	Oil seal	T110_d=8_D=14_b=4;含Hg/Cr6/Pb/PBB/PBDE≤100	1	B
4	380450559-0001	平垫圈	Flat washer	T370_内径8_外径16_厚度0.5;镀蓝白锌Q16	1	C
5	171630020-0001	调速臂	Speed regulating arm	T381;	1	B
6	110830037-0001	曲轴箱盖密封垫	Crankcase cover gasket	T381_interface(N-8092);	1	A
7	380630141-0002	轴承	Bearing	GB/T 276_6207;	1	B
8	380840443-0001	密封圈	Seal ring	T370_D=11.7_d=2.5_丙稀酸脂;	1	A
9	140250006-0001	簧片阀	Leaf valve	T370_压板加厚;	1	B
10	380140067-0003	六角头法兰面螺栓	Hexagon bolt with flange	GB/T 5789_M6_L=12;镀蓝白锌Q16	3	C
11	110850004-0001	呼吸槽密封垫	PACKING, BREATHER CHAMBER	T370_无石棉软木橡胶板;	1	A
12	110840005-0001	呼吸槽盖板	CAP, BREATHER CHAMBER	T370_A;镀蓝白锌 Q16	1	C
13	380630026-0001	轴承	Bearing	GB/T 276_16003;	2	B
14	380650337-0001	油封	Oil seal	T110_d=35_D=52_b=7;含Hg/Cr6/Pb/PBB/PBDE≤10	1	A

