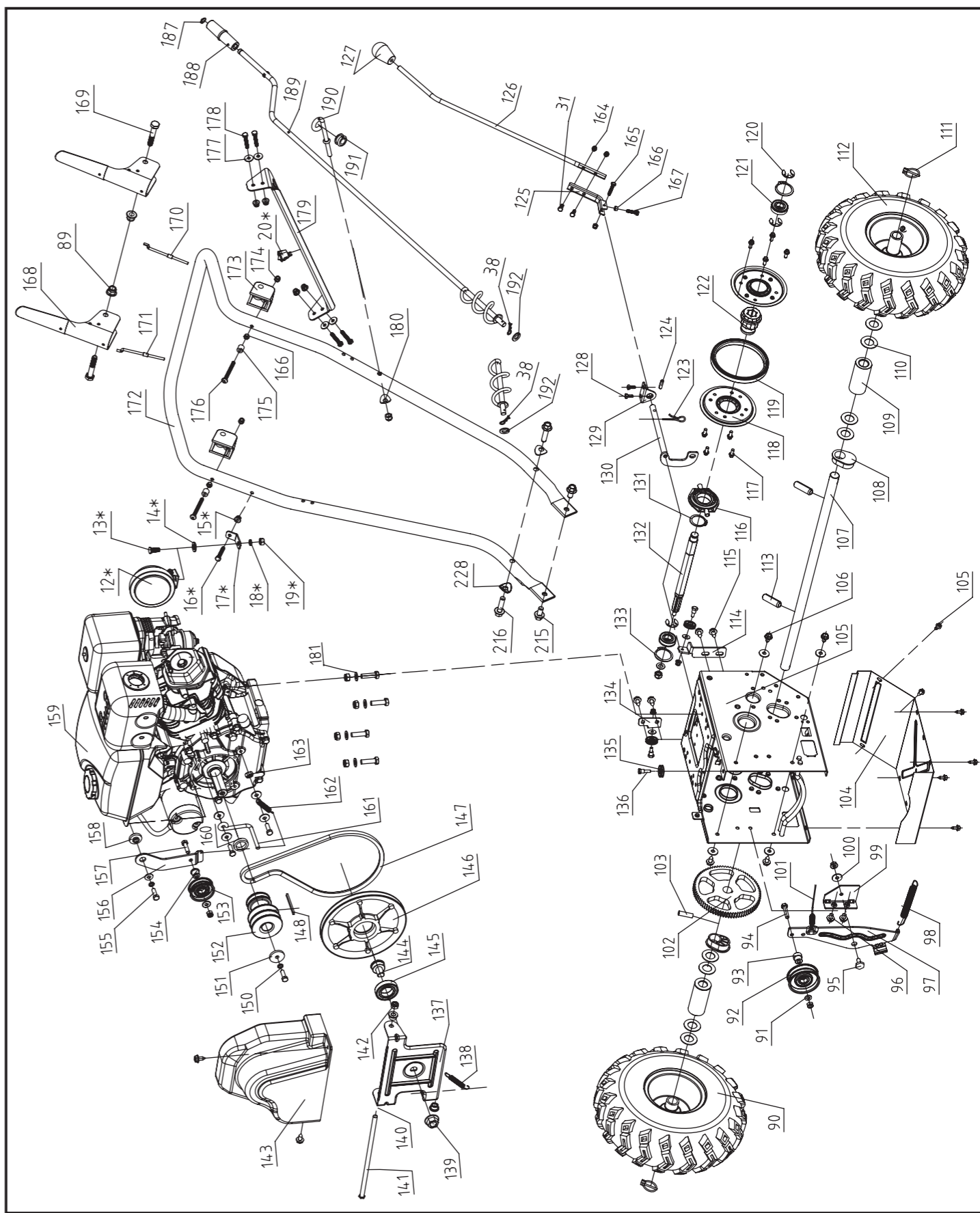
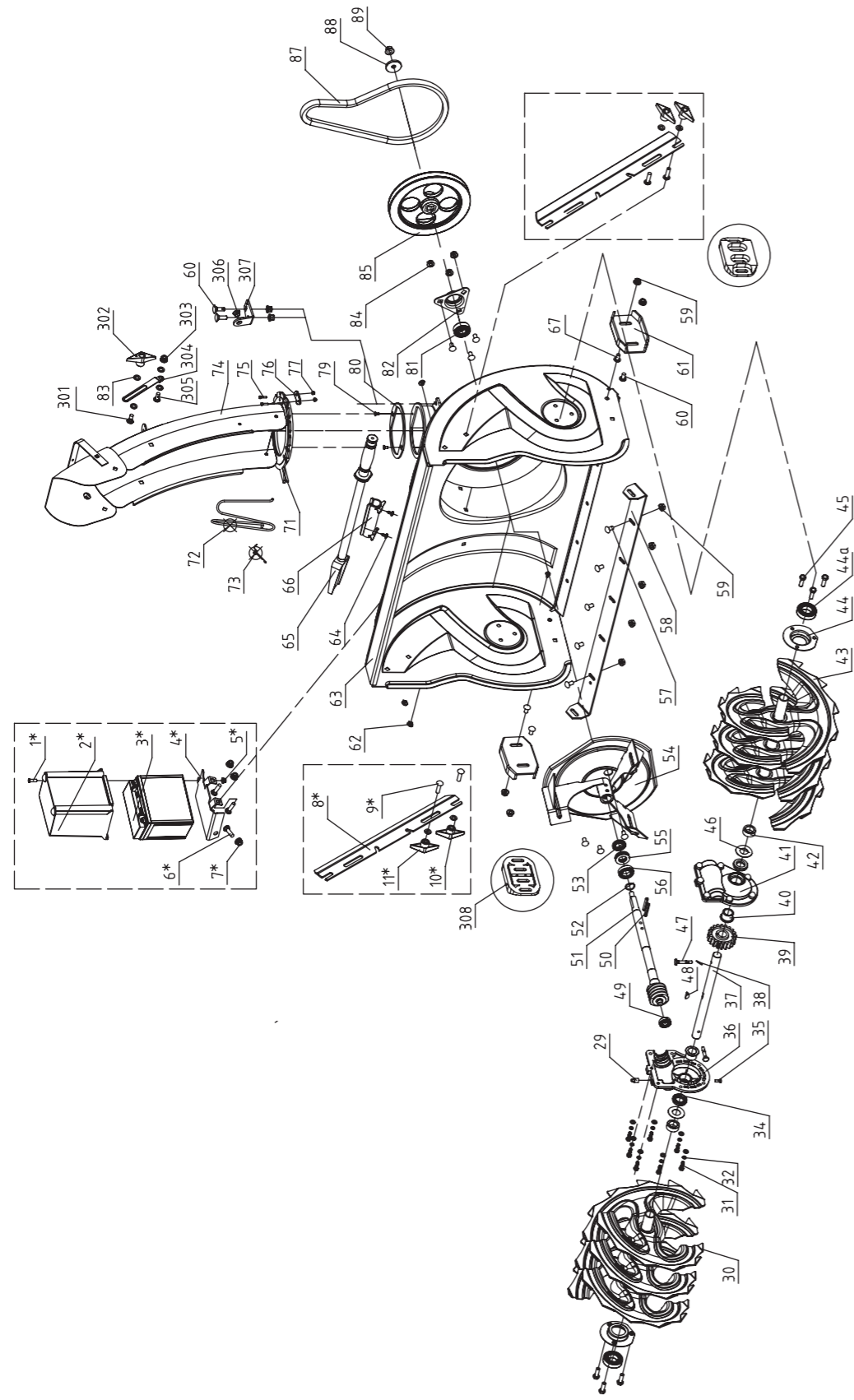


# PARTS SCHEDULE



<b>No.</b>	<b>NAME</b>	<b>Q'ty</b>
1*	Screw M6x16	1
2*	Battery Cover	1
3*	Battery	1
4*	Battery Supporter	1
5*	Lock Nut M6	1
6*	Bolt M8x16	3
7*	Lock Nut M8	3
8*	Drift Cutter	2
9*	Bolt M8x20	4
10*	Flat Washer 8	6
11*	Handle Knob Assembly	4
12*	Led Light	1
13*	Bolt M8x20	1
14*	Flat Washer 10	1
15*	Flange Lock Nut M6	1
16*	Bolt M6x40	1
17*	Light Mounting Bracket	1
18*	Spring Washer 8	1
19*	Nut M8	1
20*	Switch	1
29	Oil Seal M10x1	1
30	Spiral Assembly RH	1
31	Bolt M6x20	10
32	Spring Washer 6	15
33	Flat Washer 6	10
34	Seal B20x35x7	3
35	Screw M5x12	1
36	Auger Gearcase Housing RH	1
37	Auger Shaft	1
38	Clevis Pin 1.8	5
39	Worm Wheel	1
40	Shaft Sleeve	2
41	Auger Gearcase Housing LH	1
42	Washer	2
43	Spiral Assembly LH	1
44	Bearing Housing 6005	2
44a	Ball Bearing 6005-2RS	2
45	Screw ST8x20	6
46	Big Washer	2
47	Shear Pin	4
48	Key 5x7.5x19	1
49	Ball Bearing 6001-2RS	1
50	Roll Pin 6x37	4

51	Impeller Shaft	1
52	Washer	1
53	Seal B20x35x7	1
54	Impeller Assembly	1
55	Thrust Bearing 51104	1
56	Ball Bearing 61904-2RS	1
57	Bolt M8x16	6
58	Shave Plate	1
59	Lock Nut M8	9
60	Bolt M8x20	5
61	Skid Shoe	2
62	Plug	6
63	Auger Housing Assy.	1
64	Screw ST5.5x13	2
65	Chute Clean-Out Tool	1
66	Clean-Out Tool Mounting Bracket	1
67	Bolt M8x25	2
71	Gear Assembly, Ring	1
72	Block Pin	1
73	Torsional Spring	1
74	Discharge Chute	1
75	FT Bolt M6x30	6
76	Chute Flange Keeper	3
77	Flange Lock Nut M6	13
79	Screw M5x6	2
80	Discharge Chute Washer	1
81	Ball Bearing 6203-2RS	2
82	Bearing Housing	1
83	Lock Washer	2
84	Hex. Flange Nut M8	13
85	Auger Pulley	1
86	Flange Lock Nut	1
87	Auger Belt 4LXP885	1
88	Flat Washer 10	1
89	Flange Lock Nut M10	3
90	Wheel RH	1
91	Flat Washer 8	13
92	Auger Idler	1
93	Spacer	1
94	FT Bolt M8x35	4
95	Pivot Bolt	1
96	Flange Bolt M8x20	2
97	Auger Idler Bracket	1
98	Extension Spring	1
99	Auger Idler Mounting Bracket	1

100	Flat Washer 8	6
101	Chute Adjustable Cable	1
102	Big Gear	1
103	Pin A6x35	1
104	Frame Cover 1	1
105	Frame Cover 2	1
106	Screw M8x16	12
107	Wheel Shaft	1
108	Shaft Bushing	2
109	Shaft Spacer	2
110	Wahser	7
111	Lock Pin 8	2
112	Wheel LH	1
113	Pin 6x36	2
114	Auger Cable Holder1	1
115	ST Screw M8x16	4
116	Shift Arm	2
116a	Ball Bearing 6007	1
116b	Flat Screw 3x6	4
117	FT Bolt M6x10	8
118	Friction Wheel Side Plate	2
119	Rubber Ring	1
120	Snap Ring 15	2
121	Ball Bearing 6203-2RSn	2
122	Friction Wheel Hub	1
123	Clevis Pin 3	1
124	Pin 6x25	1
125	Spring Return Bracket	1
126	Gear Shifting Lever	1
127	Gear Shifting Lever Knob	1
128	Screw M6x16	10
129	Fork Bracket	1
130	Fork Assembly	1
131	Circlip 35	1
132	Hex Shaft	1
133	Circlip 40	2
134	Cable Support Bracket 2	1
135	Cable Roller	4
136	Bolt	3
137	Driven Pulley Bracket	1
138	Friction Wheel Retaining Spring	1
139	Flange Lock Nut M16	1
140	Locating Knot	2
141	Locating Shaft	1
142	Lock Nut M10	1

143	Engine Belt Cover	1
144	Driven Pulley Hub	1
145	Ball Bearing 6006-2RS	1
146	Engine Pulley	1
147	Drive Belt V10x835,	1
148	Key 6X6X45	1
150	Spring Washer 8	1
151	Washer	1
152	Belt Pulley	1
153	Drive Clutch Idler	1
154	Bushing	1
155	Bolt M8x25	2
156	Drive Clutch Idler Bracket	1
157	FT Bolt	2
158	Spacer	1
159	Engine	1
160	Engine Washer	1
161	Belt Blocker	1
162	Extension Spring	1
163	Jam Nut M8	1
164	Lock Nut M6	4
165	Bolt M6x30	1
166	Nut M6	3
167	FT Bolt M6x25	1
168	Drive/Auger Clutch Lever	2
169	Bolt M10x55	2
170	Auger Clutch Cable	1
171	Friction Wheel Cable	1
172	Handle	1
173	Clutch Lever Bracket	2
174	Lock Nut M6	1
175	Bolt Sleeve	2
176	Screw M6x60	2
177	Big Flat Washer 6	6
178	Bolt M6x40	4
179	Gear Shifting Panel	1
180	Arc Washer 8	2
181	Flat Washer 10	4
187	Circlip 10	1
188	Chute Crank Lever Knob	1
189	Chute Crank Lever	1
190	Chute Bracket	1
191	Rubber Spacer	1
192	Flat Washer 10	6
215	FT Bolt M10x20	2

216	FT Bolt M10x40	2
228	Arc Washer 10	6
301	Bolt M8x35	1
302	Handle Knob Assembly	1
303	Flange Nut	2
304	Chute Linkage Plate	1
305	Bolt M8x20	1
306	Bushing	1
307	Chute Crank Bracket	1