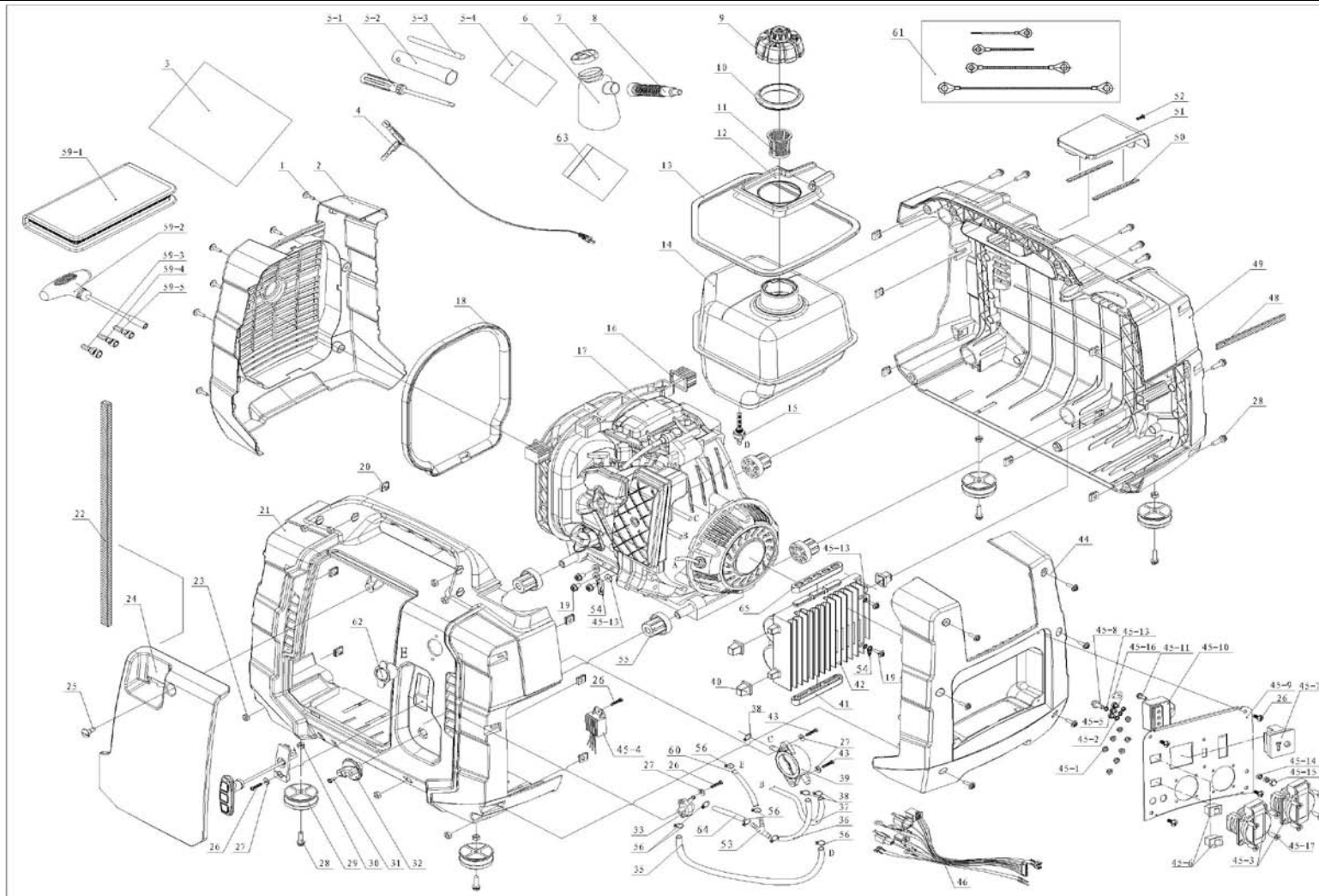


EXPLODED DRAWING

SPECIFY MODEL NO. WHEN ORDERING		DATE	REVISED DATE
DIGITAL GENERATOR		2012/10/18	2012/10/18
MODEL NO.	IGG2001-230V		V1



PARTS LIST

DATE: 2013/8/6

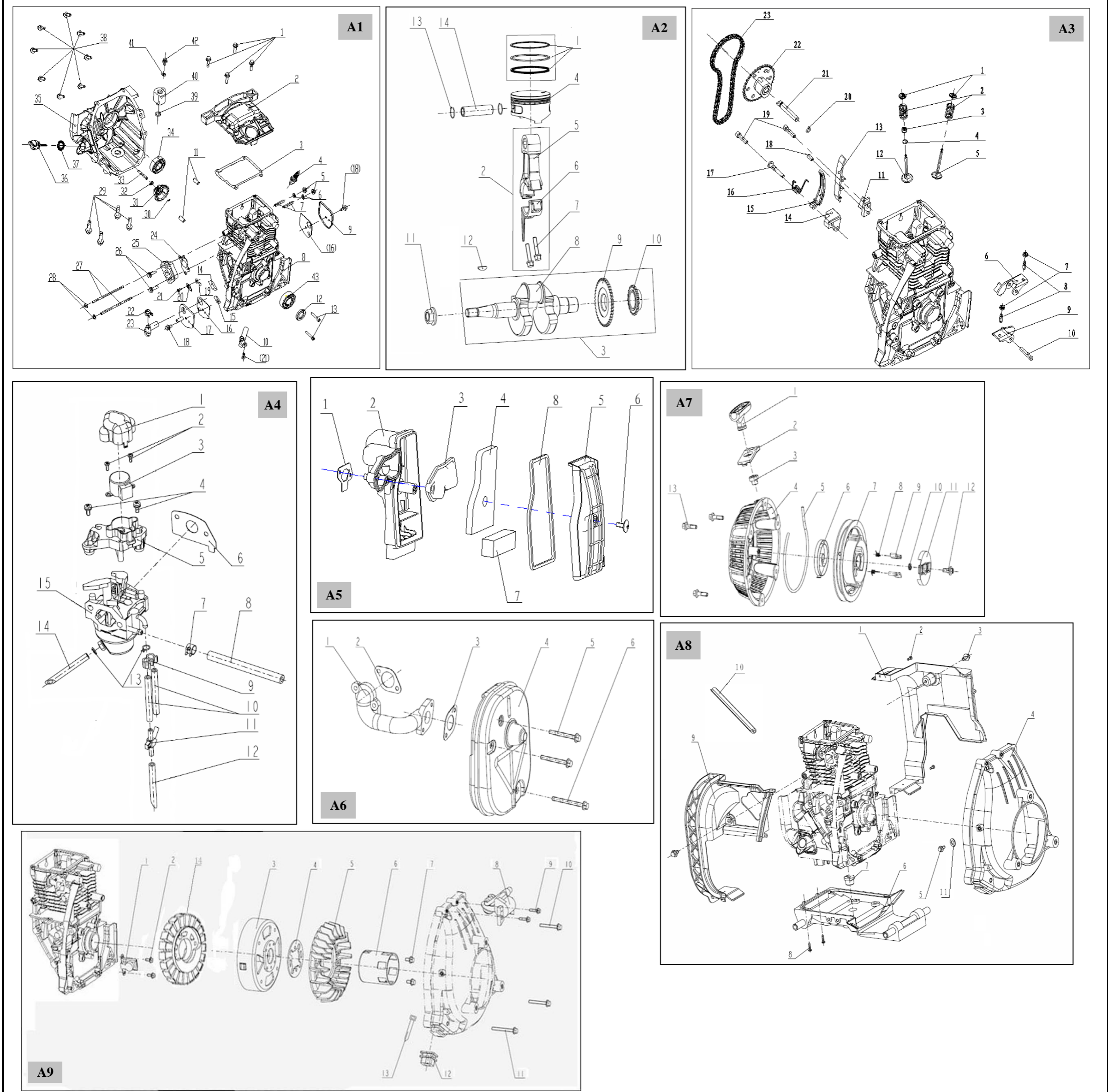
No.	Part No.	Description	QTY	
1	G01120502001	SCREW	12	
2	10420030110100	REAR COVER(BLACK)	1	
3	10420030711300	PLASTIC BAG	1	
4	10420030700200	T SHAPE PLUGS LINE	1	
5	10420030700100	TOOL BAG	1	
5-1	F0950080110104	SCREW DRIVER	1	
5-2	1042003070110100	PILOT SPANNER	1	
5-3	10410000810600	SOLID PILOT BAR	1	
5-4	10410000810700	ZIPLOCK BAG	1	
6	10420030710100	OIL CAN	1	
7	10420030710200	TANK CAP	1	
8	10420030710300	NOZZLE	1	
9	10420030200100	TANK CAP ASS'Y	1	
10	10420IE0110100	FUEL SEAL	1	
11	10420030200200	FILTER CUP	1	
12	10420030210200	FUEL DIVERSION CAVER (BLACK)	1	
13	10420IE0110200	FUEL TANK RUBBER BAND	1	
14	10420030210102	FUEL TANK	1	
15	32145K07F000	FUEL LID ASSEMBLY	1	
16	10420030111200	VIBRATION ABSORBER	2	
17		ENGINE ASSEMBLY	1	
18	10420IE0510600	MUFFLER RUBBER BAND	1	
19	G01120601001	SCREW	5	
20	10420030111404	REED NUT	12	
21	10420030110400	RIGHT CASE AND INLAYS (116C YELLOW)	1	
22	10420030110900	SPONGE	1	
23	G02010000603	NUT	7	
24	10420030110500	RIGHT CASE COVER (116C YELLOW)	1	
25	10420030111604	S15C SCREW (BLACK)	1	
26	G010204016	SELF-TAPPING SCREW	7	
27	G05010401201	FLAT WASHER	3	
28	G01120602501	SCREW	11	
29	10420030111500	RUBBER PAD	4	
30	G02040000601	NUT	4	
31	10420030111704	S15C SCREW (BLACK)	1	

32	10815020210300	FUEL SWITCH HANDLE	1	
33	10412010101	FUEL SWITCH	1	
34				
35	10420030210600	FUEL PIPE	1	
36	10420030210500	FUEL PIPE	1	
37	10420030210400	FUEL PIPE	1	
38	10420030210804	FUEL PIPE CLIP10	5	
39	158011880000	FUEL PUMP ASSEMBLY	1	
40	10420030110700	VIBRATION ABSORBER	3	
41	10420030110800	VIBRATION ABSORBER	1	
42	1042003030400A	INVERTER UNIT	1	
43	G01020301201	SELF-TAPPING SCREW& BIG GASKET ASSY	2	
44	10420030110200	FRONT COVER(BLACK)	1	
45	104200303H	PANEL ASSY	1	
45-1	G02020000403	NUT	8	
45-2	10409645306	WASHER	3	
45-3	10412010208	AC SOCKET	2	
45-4	1042000I0206	VOLTAGE STABILIZER	1	
45-5	G01120500801	SCREW	3	
45-6	10409500511	SWITCH	2	
45-7	10412010205B	DC 12V SOCKET	1	
45-8	G03020601606	BOLT	1	
45-9	10420030300102B	CONTROL PANEL	1	
45-10	1042000I0202A	IGNITION SET	1	
45-11	G01120501601	SCREW	1	
45-12				
45-13	G0401000601	WASHER	6	
45-14	G02010000606	NUT	2	
45-15	G02050000607	NUT	1	
45-16	10420030310100	GROUND CONNECTING SYMBOL	1	
45-17	G01040401403	SCREW	8	
45-18				
46	104200303002AU01	CABLE ASSY	1	
47				
48	10420030111000	SPONGE	1	
49	10420030110300	LEFT CASE AND INLAYS (116C YELLOW)	1	
50	10420030111100	SPONGE	2	
51	10420030110600	SPLUG PLUG COVER (116C YELLOW)	1	

52	G01020301201	SELF-TAPPING SCREW	1	
53	10420030211100	TEE JOINT	1	
54	10420030310200	GROUND CONNECTING SYMBOL	3	
55	10420030111300	VIBRATION ABSORBER	4	
56	168020150100	FUEL PIPE CLIP81	6	
57				
58				
59	10420030700300	CARBURATOR REMOVING TOOL	1	
59-1	1042003070310100	TOOL BAG	1	
59-2	1042003070310200	T-TYPE WRENCH	1	
59-3	1042003070310300	10mm SLEEVE	1	
59-4	1042003070310400	8mm SLEEVE	1	
59-5	1042003070310500	7mm SLEEVE	1	
60	10420030210300	OILIER FUEL PIPE	1	
61	104200303002EU01	CABLE ASSY	1	
62	644010010500	OILIER	1	
63	10420030711000	ZIPLOCK BAG	2	
64	10420030211200	FUEL PIPE	1	
65	10420030111900	VIBRATION ABSORBER	1	

EXPLODED DRAWING

SPECIFY MODEL NO. WHEN ORDERING PARTS	DATE	REVISED DATE
ENGINE ASS'Y	2012/10/18	2012/10/18
MODEL NO. IGG2001-230V		V1



No.	STK code	Parts No.	Description	Q	No.	STK code	Parts No.	Description	Q
A1	C		CRANKCAS ASS'Y	1	A6	C		MUFFLER ASSY	1
A2	C		CRANKSHAFT & PISTON & CONNECTING ROD ASS'Y	1	A7	C		STARTING SET ASSY	1
A3	C		INTAKE & EXHAUST MECHANISM ASS'Y	1	A8	C		PLASTIC COVER&DOWN BRACKET ASS'Y	1
A4	B		CARBURETOR ASS'Y	1	A9	C		IGNITION SYSTEM ASS'Y	1
A5	B		AIR CLEANER ASS'Y	1					

STK Codes are:
A - consumable parts B - one year broken parts C - three years broken parts D - five years broken parts E - Not easy broken parts

PARTS LIST

DATE: 2013/8/6

No.	Parts No.	Description	Q	
A1	1580200100B0	CRANKCASE ASS'Y	1	
1	0B01310602565	BOLT	4	
2	158020440000	CYLINDER HEAD	1	
3	0158010070100	SPACER,CYLINDER HEAD	1	
4	1580109514C0	SPARK PLUG	1	
5	0B04280600061	NUT	2	
6	0B07000006051	WASHER	2	
7	158010210002	BOLT,EXHAUST PIPE	2	
8	158020011200	CRANKCAS ASSY	1	
9	0158019960102	COVER,RIGHT	1	
10	158010011600	PIPE,PLASTIC	1	
11	0158010120000	GUIDE,DOWEL	2	
12	0158010130100	OIL SEAL	1	
13	0B02040503065	BOLT	2	
14	0158010560000	FILTER	1	
15	144040560000	FILTER	1	
16	158010070200	SPACER	2	
17	0158010011500	COVER,LEFT	1	
18	0B01310601255	BOLT	2	
19	0158010530000	CLIQUE	1	
20	0158010540000	PLATE,RESTRICT	1	
21	0B02210401065	BOLT	2	
22	0158010150003	CIRCLIP	1	
23	0158010320100	HOSE,INSPIRATOR	1	
24	0158010070000	SPACER	1	
25	0158019980000	MATTRESS, HEAT INSULATING	1	
26	0B01310602565	BOLT	2	
27	0158010080001	BOLT,INTAKE PIPE	2	
28	0B04280500065	NUT	2	
29	0B01310803065	BOLT	4	
30	026146L01F000	CIRCLIP	1	
31	158020250000	OIL GEAR	1	
32	017585K07F000	WASHER	1	
33	14202Q01F000	PIN	1	
34	0B12602040063	BEARING	1	
35	158020450100	COVER CRANKCASE	1	
36	035100004B31F000	DIPSTICK	1	
37	035100005B31F000	OIL SEAL ASSY	1	
38	0B01310602265	BOLT	8	
39	0B17111824030	O RING	1	
40	0158011894600	SENSOR ASSY	1	

No.	Parts No.	Description	Q	
41	0B07010006055	WASHER	1	
42	0B01310601255	BOLT	1	
43	0B12602040063	BEARING	1	
A2	158020010100	CRANKSHAFT & PISTON & CONNECTING ROD ASS'Y	1	
1	158010014300	PISTON RING	1	
2	158010012300	CONNECTING ROD ASSY	1	
3	158020012200	CRANKSHAFT ASSY	1	
4	0158010470000	PISTON	1	
5	0158010410000	ROD,CONNECTING	1	
6	0158010410100	COVER,CONNECTING ROD	1	pls buy A2-2
7	0158010080100	BOLT,CONNECTING ROD	2	
8	158020400000	CRANKSHAFT	1	
9	0158010250100	DRIVEN GEAR	1	pls buy A2-3
10	0158010220000	GEAR,,CRANKSHAFT TIMING	1	
11	0158010080200	NUT	1	
12	0158010090000	KEY	1	
13	0158010180000	CIRCLIP,PISTON PIN	2	
14	0158010120100	PIN,PISTON	1	
A3	1580200102B0	INTAKE & EXHAUST MECHANISM ASS'Y	1	
1	0158010340000	UPPER RETAINER	2	
2	0158010060000	SPRING,VALVE	2	
3	0158010130000	OIL SEAL ASSY	2	
4	0158010170000	SPRING	2	
5	0158010520100	VALVE,EXHAUST	1	
6	158020920100	ARM,EXHAUST	1	
7	0158010080400	ADJUSTING NUT,VALVE	2	
8	0158010080300	ADJUSTING BOLT,VALVE	2	
9	158020970000	ARM,INTAKE	1	
10	158020120400	SHAFT,ARM	1	
11	0158019990100	BASE,ORIENTED BELT	1	
12	0158010520000	VALVE,INTAKE	1	
13	0158019980200	ORIENTED,CHAIN BELT	1	
14	0158019990000	FIXER,STRAIN	1	
15	0158019980100	STRAIN,CHAIN BELT	1	
16	0158010170200	SPRING	1	
17	0158010120200	PIN,STRAIN	1	
18	0158010120300	PIN,ORIENTED BELT	1	
19	0B02040602555	BOLT	2	
20	0B17107118010	O RING	1	

No.	Parts No.	Description	Q	
21	0158010500000	CAMSHAFT	1	
22	158020012400	CAM	1	
23	0158010230000	CHAIN	1	
A4	158010010300	CARBURETOR ASSY	1	
1	158012350100	COVER,DUST	1	
2	B02210300855	BOLT	2	pls buy A4
3	158010012600	STEP ELECTROMOTOR	1	
4	B02210401055	BOLT ASSY	2	
5	158012350000	SETTING,ELECTROMOTOR	1	
6	158010070300	SPACER,CARBURETOR	1	
7	2900000K16F000	CLIP	1	
8	158010320200	HOSE GASOLINE	1	
9	158019980400	CIRCLIP,HOSE	1	pls buy A4
10	158010320300	VENT-PIPE,SHORT	1	
11	158010300300	TIE-IN,HOSE	1	
12	158010320400	VENT-PIPE,LONG	1	
13	158012340000	CIRCLIP,CLARITY HOSE	2	
14	158010320300	CLARITY HOSE,OUT	1	
15	158010012500	CARBURETOR	1	
A5	158010010400	AIR CLEANER ASSY	1	
1	0158010070400	SEAL,AIR CLEANER	1	
2	0158010012700	AIR CLEANER	1	
3	0158010012800	COVER,CLAMP	1	Pls buy A5-2
4	0158012400000	CORE 1,FILTERING	1	
5	0158012270200	COVER,AIR CLEANER	1	Pls buy A5-2
6	0B02210601656	BOLT	1	Pls buy A5-2
7	0158012400100	CORE 2,FILTERING	1	
8	158010310000	SEALING STRIPS	1	Pls buy A5-2
A6	158010010500	MUFFLER ASSY	1	
1	0158019990200	TIE-IN, MUFFLER	1	
2	0158010070800	SEAL, EXHAUST	1	
3	0158010070700	SEAL, MUFFLER	1	
4	0158010942900	WELDING ASSY,MUFFLER	1	
5	0B01310605085	BOLT	2	
6	0B01310606085	BOLT	1	
A7	158010010600	STARTING SET ASSY	1	
1	01580100136B0	HANDLE	1	

No.	Parts No.	Description	Q	
2	0158010013500	COVER, OUTER	1	
3	017173A04F000	PIPE, GUIDE	1	
4	017170K14F001	COVER, STARTING	1	
5	017160K07F000	ROPE, STARTING	1	
6	017152K07F000	SPRING, TURBINATION	1	
7	0158019980500	TABLE, ROTTRY	1	
8	017162Q01F000	SPRING	2	
9	017158Q01F000	BLOCK, CLUTCH	2	
10	0158010060100	SPRING PRESSURE	1	
11	017157Q01F000	PLATE, GUIDE	1	
12	0158010080500	BOLT	1	
13	0B01330602065	BOLT	3	
A8	158010010700	PLASTIC COVER&DOWN BRACKET ASSY	1	
1	0158019981000	PLASTIC COVER, RIGHT	1	
2	0B050035013C5	BOLT	2	
3	0B01310601255	BOLT	2	
4	0158010013700	COWLING ASSY	1	
5	0B01310501255	BOLT	1	
6	0158010013800	DOWN BRACKET ASSY	1	
7	0158019970300	PIPE, RUBBER	1	
8	0B050035016C5	BOLT	2	
9	0158019981100	PLASTIC COVER, LEFT	1	
10	158019970500	SEALING STRIPS	1	
11	37108A04F000	WASHER	1	
A9	1580100108B0	IGNITION SYSTEM ASS'Y	1	
1	1042000I0303	TRIGGER ASSY	1	
2	0B01310501265	BOLT	2	
3	1042000I03002	Rotor Assy	1	
4	0158019961700	GASKET	1	
5	0158012060000	FAN	1	
6	0158019961800	RATCHET WHEEL	1	
7	0B01330601265	BOLT	2	
8	1042000I0204C	IGNITION ASSY	1	
9	0B01310502065	BOLT	2	
10	0B01310603565	BOLT	1	
11	0B01310605065	BOLT	2	
12	0158019970000	SET, RUBBER	1	
13	0158010190000	STRIP	1	
14	1042000I03001	STATOR WINDING	1	