

Repair Parts Manual



## LAWN TRACTOR

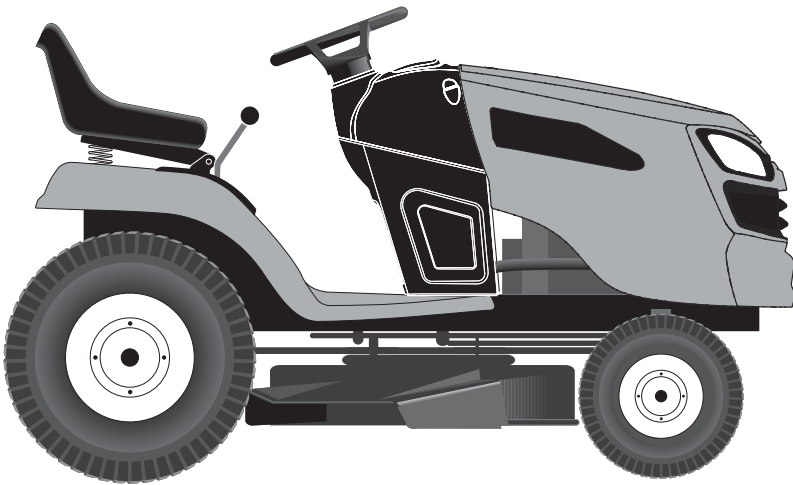
21 HP,\* 42" Mower

Electric Start

Automatic Transmission

Model No.

**917.288513**



For answers to your questions  
about this product, Call:

**1-800-659-5917**

**Sears Craftsman Help Line**

5 am - 5 pm, Mon - Sat

SEARS, ROEBUCK AND CO., HOFFMAN ESTATES, IL 60179 U.S.A.

Visit our Craftsman website: [www.sears.com/craftsman](http://www.sears.com/craftsman)

\*As rated by the engine manufacturer

**443049**

**⚠ WARNING:** This tractor is equipped with an internal combustion engine and should not be used on or near any unimproved forest-covered, brush-covered or grass-covered land unless the engine's exhaust system is equipped with a spark arrester meeting applicable local or state laws (if any). If a spark arrester is used, it should be maintained in effective working order by the operator.

In the state of California the above is required by law (Section 4442 of the California Public Resources Code). Other states may have similar laws. Federal laws apply on federal lands. A spark arrester for the muffler is available through your nearest Sears service center (See ENGINE ASSEMBLY section of this manual).

## REPAIR PROTECTION AGREEMENTS

Congratulations on making a smart purchase. Your new Craftsman® product is designed and manufactured for years of dependable operation. But like all products, it may require repair from time to time. That's when having a Repair Protection Agreement can save you money and aggravation.

*Purchase a Repair Protection Agreement now and protect yourself from unexpected hassle and expense.*

Here's what's included in the Agreement:

- **Expert service** by our 12,000 professional repair specialists.
- **Unlimited service and no charge** for parts and labor on all covered repairs.
- **Product replacement** if your covered product can't be fixed.
- **Discount of 10%** from regular price of service and service-related parts not covered by the agreement; also, 10% off regular price of preventive maintenance check.
- **Fast help by phone** – phone support from a Sears representative on products requiring in-home repair, plus convenient repair scheduling.

Once you purchase the Agreement, a simple phone call is all that it takes for you to schedule service. You can call anytime day or night, or schedule a service appointment online.

Sears has over 12,000 professional repair specialists, who have access to over 4.5 million quality parts and accessories. That's the kind of professionalism you can count on to help prolong the life of your new purchase for years to come. Purchase your Repair Protection Agreement today!

**Some limitations and exclusions apply.**

**For prices and additional information call 1-800-827-6655.**

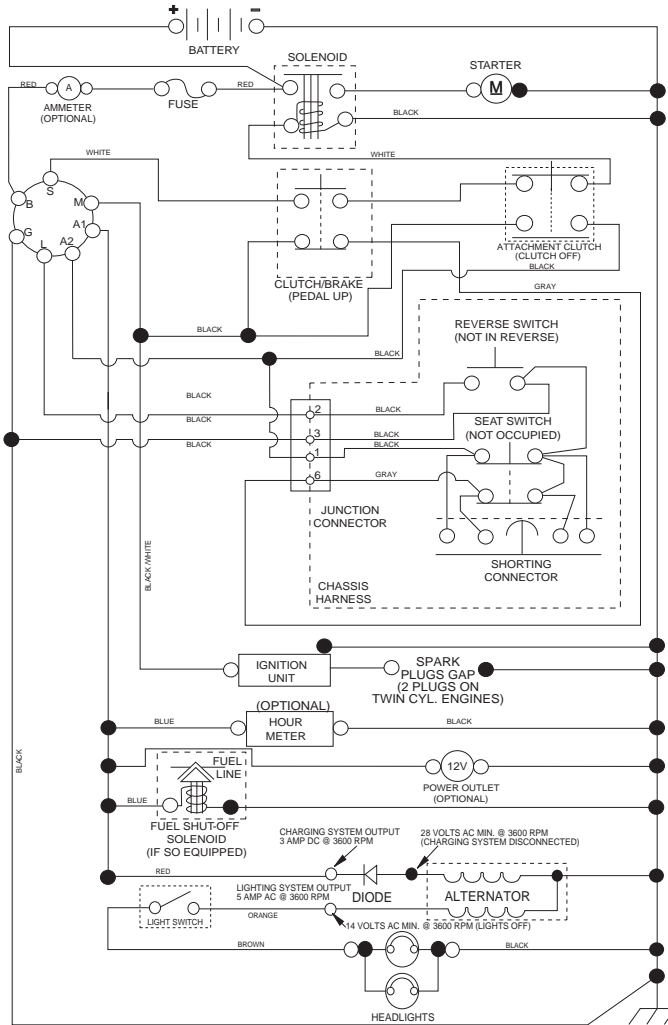
## SEARS INSTALLATION SERVICE

*For Sears professional installation of home appliances, garage door openers, water heaters, and other major home items, in the U.S.A. call 1-800-4-MY-HOME®*

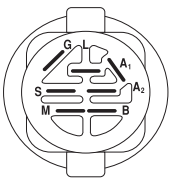
# TRACTOR -- MODEL NUMBER 917.288513

## SCHEMATIC

SCH11

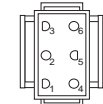


**NOTE**  
YOUR TRACTOR IS EQUIPPED WITH A SPECIAL ALTERNATOR SYSTEM. THE LIGHTS ARE NOT CONNECTED TO THE BATTERY, BUT HAVE THEIR OWN ELECTRICAL SOURCE. BECAUSE OF THIS, THE BRIGHTNESS OF THE LIGHTS WILL CHANGE WITH ENGINE SPEED. AT IDLE THE LIGHTS WILL DIM. AS THE ENGINE IS SPEEDED UP, THE LIGHTS WILL BECOME THEIR BRIGHTEST.

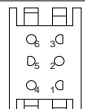


IGNITION SWITCH

POSITION	CIRCUIT	"MAKE"
OFF	M+G+A1	
RUN/OVERRIDE	B+A1	
RUN	B+A1	L+A2
START	B + S + A1	



CHASSIS HARNESS CONNECTOR (MATING SIDE)



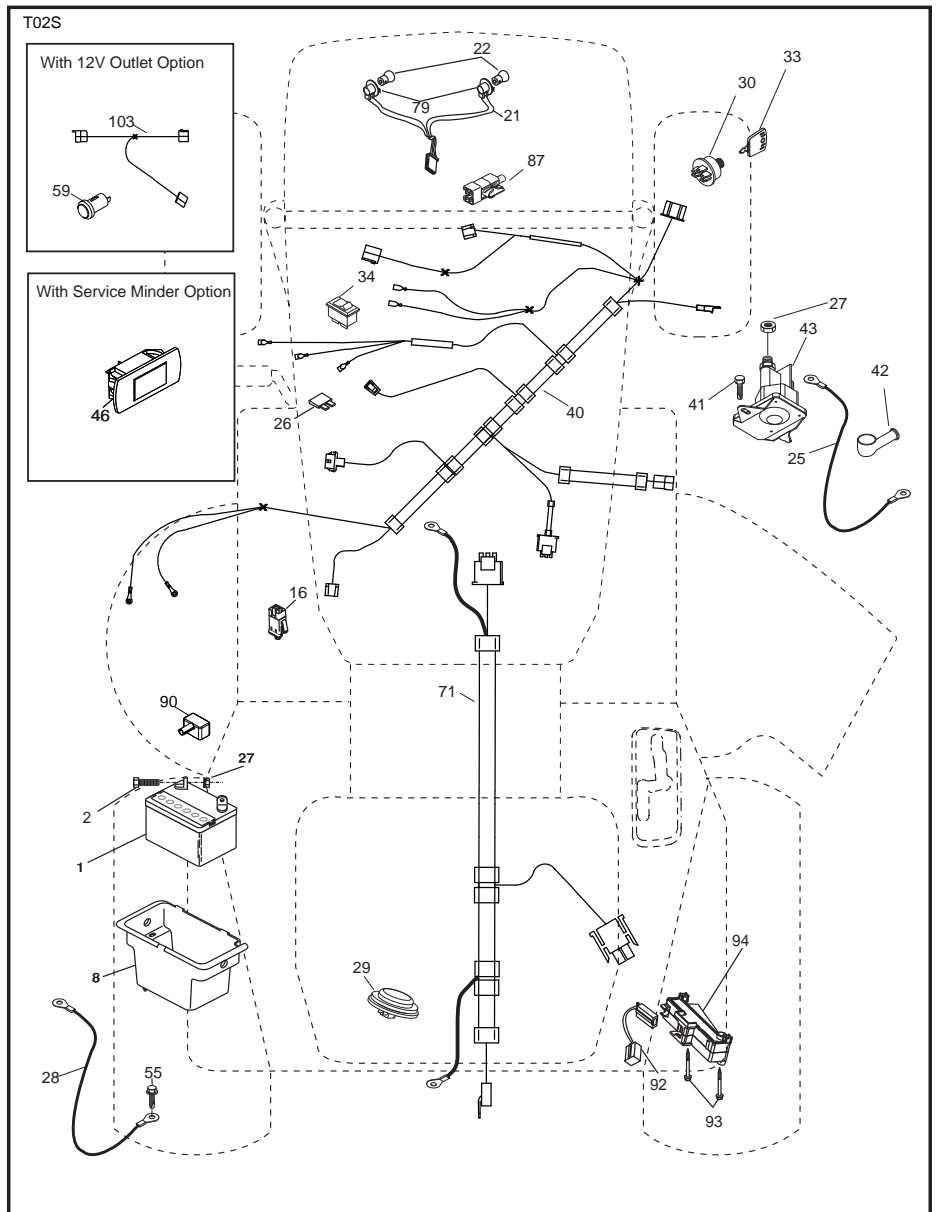
DASH HARNESS CONNECTOR (MATING SIDE)

**WIRING INSULATED CLIPS**  
NOTE: IF WIRING INSULATED CLIPS WERE REMOVED FOR SERVICING OF UNIT, THEY SHOULD BE RE-INSTALLED TO PROPERLY SECURE YOUR WIRING.

● NON-REMOVABLE CONNECTIONS

○ REMOVABLE CONNECTIONS

**TRACTOR -- MODEL NUMBER 917.288513**  
**ELECTRICAL**

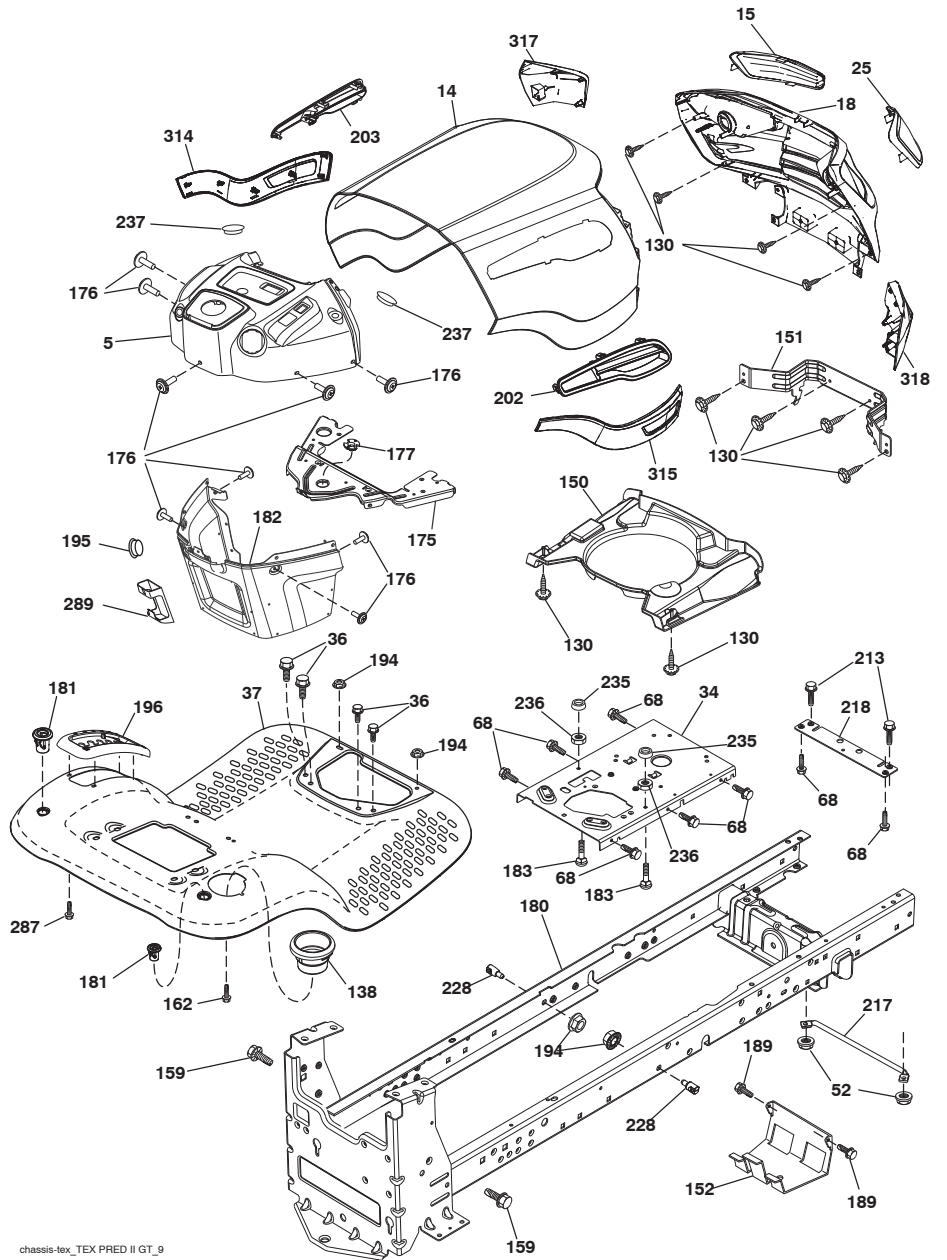


**ELECTRICAL****TRACTOR - - MODEL NUMBER 917.288513**

<b>KEY NO.</b>	<b>PART NO.</b>	<b>DESCRIPTION</b>
1	163465	Battery
2	74760412	Bolt Hex Hd 1/4-20 unc x 3/4
8	193228	Box Battery
16	176138	Switch Interlock Push-In
21	400252	Harness Socket Light w/4152J
22	4152J	Bulb Light
25	412895	Cable Starter
26	175158	Fuse
27	73510400	Nut Keps Hex 1/4-20 unc
28	198885	Cable, Ground
29	401545	Switch, Seat
30	193350	Switch, Ign
33	411932	Key/Chain
34	110712X	Switch Light / Reset
40	401098	Harness Ign. Dash
41	17720408	Screw Thd Cut 1/4-20 x 1/2
42	131563	Cover, Terminal
43	192507	Solenoid
55	17060512	Screw Thdrol 5/16-18 x 3/4 TYTT
71	400449	Harness Ign. Chassis
79	175242	Bulbholder Asm. Incan Descent
87	197802	Switch Interlock Clutch Cable
90	435395	Cover Terminal Battery
92	196615	Harness Pigtail Reverse Switch
93	192540	Screw Plastite 10 - 14 x 2 00
94	191834	Module Reverse Ros

**NOTE:** All component dimensions given in U.S. inches  
1 inch = 25.4 mm

TRACTOR - - MODEL NUMBER 917.288513  
CHASSIS ASSEMBLY



chassis-tex\_TEX PRED II GT\_9

**TRACTOR - - MODEL NUMBER 917.288513**  
**CHASSIS ASSEMBLY**

<b>KEY NO.</b>	<b>PART NO.</b>	<b>DESCRIPTION</b>
5	421810X428	Dash
14	421154X615	Hood
15	421493X599	Lens LH
18	441721X428	Grille
25	421494X599	Lens RH
34	196125	Plate engine
36	17060512	Screw 5/16-18 x 3/4
37	414872X615	Fender
52	73680500	Nut Crown lock 5/16-18
68	17490508	Screw Thdrol 5/16-18 x 1/2
130	416358	Screw # 10 x .750 BOS Thread
138	193224X428	Cupholder
150	199413	Duct Heat Hood
151	196332	Bracket Pivot
152	199535	Shield Browning/Debris
159	17000612	Screw Hexwsh Thdrol 3/8-16 x 3/4
162	142432	Screw Hex Wsh Hi-Lo 1/4 x 1/2
175	196304	Crossmember
176	400776	Screw 10-24 x 5/8 Wshd Qdrx
177	195227	Bushing Steering
180	195457	Chassis
181	193102X428	Bushing Mtg. Fender Crgo.
182	406859	Dash Lower
183	74520520	Bolt Fin Hex 5/16-18 x 1-1/4
189	17000512	Screw 5/16 - 18 x 3/4
194	73900500	Nut Lock Hex Flange 5/16-18
195	401556x428	Plug Hole Dash 12V Adapter
196	414579	Console Asm. Deck Lift
202	441722X428	Vent Side Hood RH
203	441723X428	Vent Side Hood LH
213	74760512	Bolt hex HD 5/16-18 unc x 3/4
217	409167	Rod Pivot Chassis
218	196395	X piece hood stop
228	195161	Stud Fastener
235	406129	Spacer Fender
236	73930500	Nut Center Lock 5/16-18
237	403704	Plug Mount Cargo
287	17600406	Screw Hex Washhead 1/4-20 x 3/8
289	199783X428	Plug Cruise/Phone Common YTGT
314	441665	Trim SD LH
315	441664	Trim SD RH
317	421257X615	Bumper RH
318	421258X615	Bumper LH
- - -	404951X428	Plug Dash SRVMNDR

**NOTE:** All component dimensions given in U.S. inches  
1 inch = 25.4 mm





**TRACTOR - - MODEL NUMBER 917.288513**

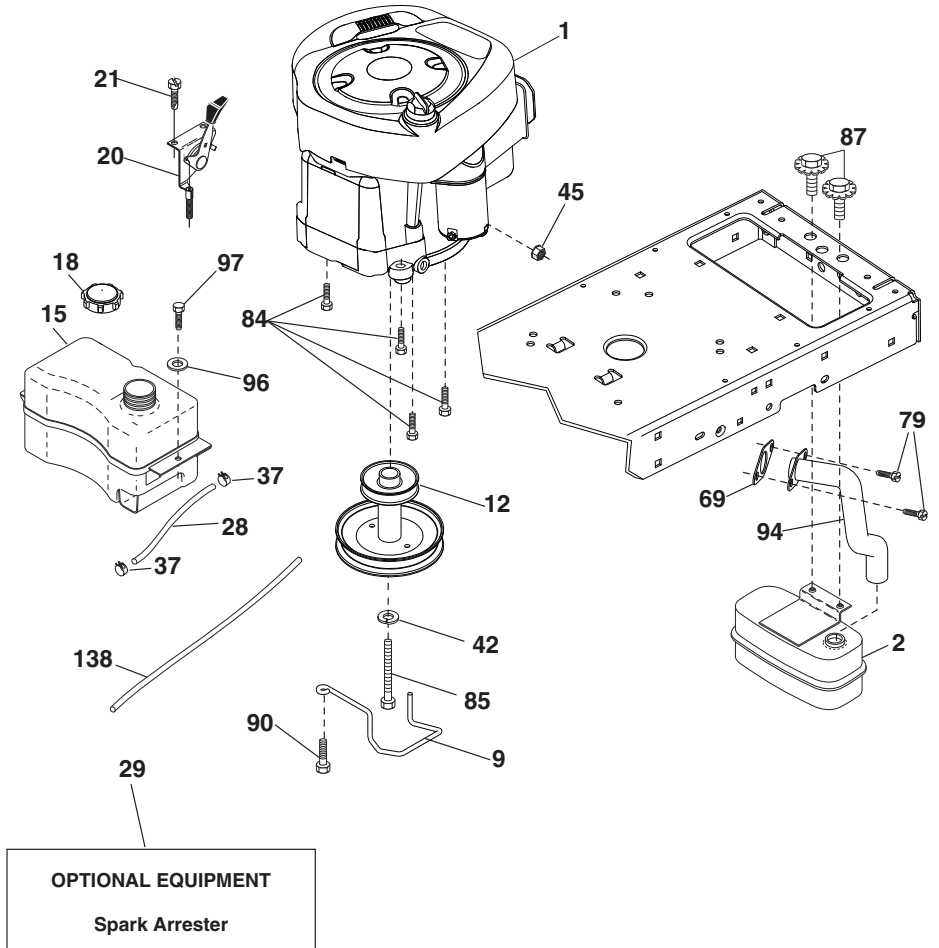
**GROUND DRIVE**

<b>KEY PART NO. NO.</b>	<b>DESCRIPTION</b>	<b>KEY PART NO. NO.</b>	<b>DESCRIPTION</b>
1	----- Transaxle, Tufftorq K46 BA (408214)(See Transaxle Breakdown)	170	194322 Keeper V-Idler
2	123583X Key Square	171	72110616 Bolt 3/8-16 unc x 2
15	19131316 Washer 13/32 x 13/16 x 16 Ga.	174	197289 Nut Push
17	413678 Spring, Brake	175	406208 Shaft Asm Shift
22	197660 Rod Shift	176	196214 Arm Clevis Rod Shift
23	140845 Knob	178	197456 Spring Shift
29	403806 Rod, Brake	183	137057 Spacer Axle
33	12000001 Ring E	184	196439X667 Handle Parking Brake
35	435486 Rod, Brake, Park	185	72110622 Bolt
42	8883R Cover, Foot Pedal	186	194321 Spacer Retainer
49	72110614 Bolt	187	19133210 Washer
50	194327 Pulley Idler Flat	188	194323 Link Clutch Ground Drive
51	73900600 Lock Nut 3/8-16	189	194317 Bellcrank Ground Drive
52	194326 Idler V-Groove 910" Offset	190	194318 Keeper Bellcrank Ground Drive
56	130969 V-Belt, Drive	205	121748X Washer 25/32 x 1-5/8 x 16 Ga.
64	196200 Shaft Asm. Pedal Brake Control	211	196212 Bushing Shaft
70	193220X428 Console Shift	216	196131 Bracket Pulley Idler
73	74490544 Bolt Hex 5/16-18 Gr. 5	221	403187 Retainer Spring Clip Handle
74	142432 Screw 1/4 x 1/2	225	403319 Keeper Belt Transaxle
80	440619 Strap Torque	226	401564 Bracket Mount Torque
99	415742 Rod Spring Bypass	227	17490512 Screw Thdrol 5/16-18 x 3/4
116	73900500 Nut Lock Hex Flange 5/16-18	230	188967 Washer Hardened
125	17000512 Screw 5/16-18 x 3/4	232	74780716 Bolt 7/16-14 x 1 Gr. 5
143	17490508 Screw 5/16-18 x 1/2	233	405296 Washer Serrated
153	4497H Retainer Spring 1" STD	279	406207 Link Shift
159	76020412 Pin Cotter 1/8 x 3/4		
160	169484 Retainer Clip		
161	105709X Spring, Return, Clutch		
166	429164 Nut Push .625		
167	405257 Latch Brake Parking		

**NOTE:** All component dimensions given in U.S. inches  
1 inch = 25.4 mm

TRACTOR -- MODEL NUMBER 917.288513

ENGINE



engine-tex\_BS\_59

## ENGINE

### TRACTOR - - MODEL NUMBER 917.288513

KEY PART NO.	PART NO.	DESCRIPTION
1	- - - - -	Engine B&S Model No. 331877-2371-G1 (438393) (See Engine Breakdown)
2	188655	Muffler
9	194320	Keeper Belt Engine
12	405471	Pulley Engine
15	433007	Tank Fuel
18	438596	Cap Asm. Fuel
20	175438X428	Control Throttle/Choke
21	416358	Screw 10 x .750 BOS Thread
28	401137	Fuel Line
29	137180	Spark Arrester Kit
37	123487X	Clamp Hose
42	10040700	Washer Lock 7/16
45	73510400	Nut Keps Hex 1/4-20 unc
69	165291	Gasket
79	192334	Screw 5/16-18 x .75
84	17060620	Screw 3/8-16 x 1-1/4
85	173937	Bolt Hex 7/16-20 x 4 x Gr. 5-1.5
87	171877	Bolt 5/16-18 unc x 3/4 w/Sems
90	17000616	Screw 3/8-16 x 1.0
94	405450	Exhaust Tube
96	19091416	Washer 9/32 x 7/8 x 16 Ga.
97	17670412	Screw 1/4-20 x 3/4
138	414119	Purge Line

**NOTE:** All component dimensions given in U.S. inches  
1 inch = 25.4 mm

For engine service and replacement parts, call the toll free number for your engine manufacturer listed below:

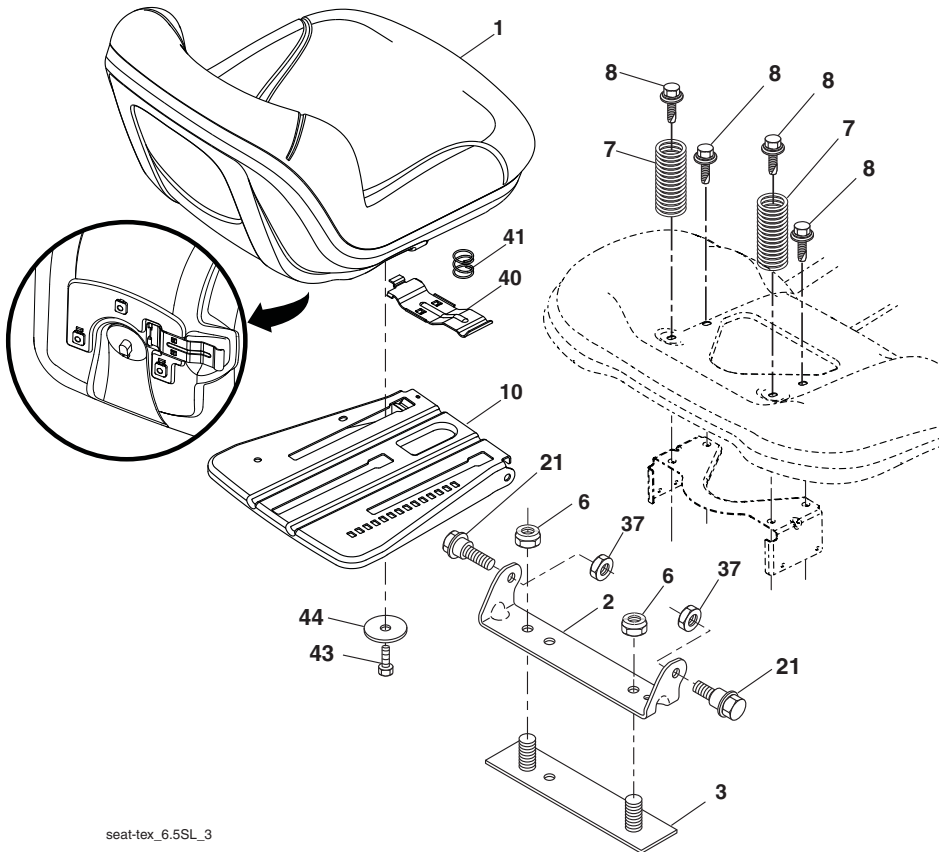
Briggs & Stratton 1-800-233-3723

#### Engine Power Rating Information

The gross power rating for individual gas engine models is labeled in accordance with SAE (Society of Automotive Engineers) code J1940 (Small Engine Power & Torque Rating Procedure), and rating performance has been obtained and corrected in accordance with SAE J1995 (Revision 2002-05). Torque values are derived at 3060 RPM; horsepower values are derived at 3600 RPM. Actual gross engine power will be lower and is affected by, among other things, ambient operating conditions and engine-to-engine variability. Given both the wide array of products on which engines are placed and the variety of environmental issues applicable to operating the equipment, the gas engine will not develop the rated gross power when used in a given piece of power equipment (actual "on-site" or net power). This difference is due to a variety of factors including, but not limited to, accessories (air cleaner, exhaust, charging, cooling, carburetor, fuel pump, etc.), application limitations, ambient operating conditions (temperature, humidity, altitude), and engine-to-engine variability. Due to manufacturing and capacity limitations, Briggs & Stratton may substitute an engine of higher rated power for this Series engine.



**TRACTOR - - MODEL NUMBER 917.288513**  
**SEAT ASSEMBLY**



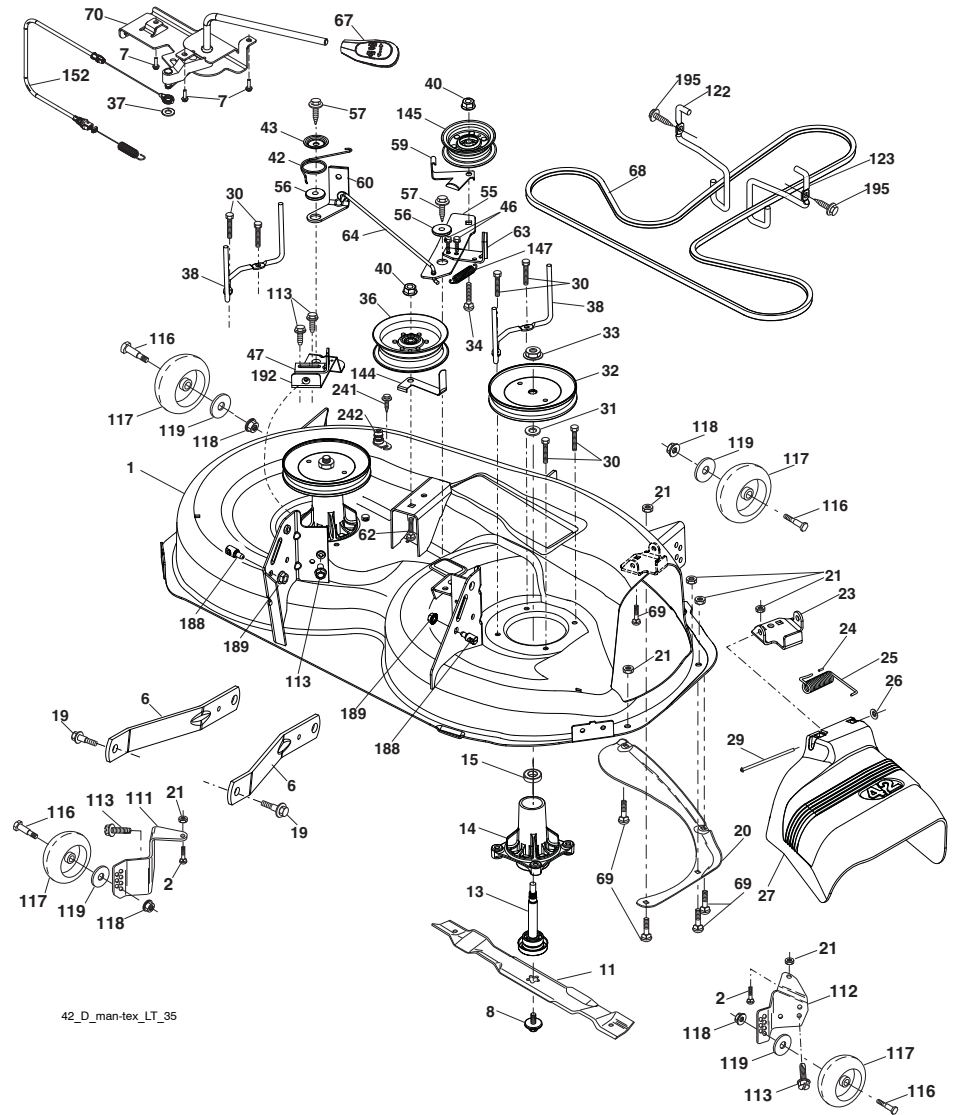
seat-tex\_6.5SL\_3

KEY PART NO.	NO.	DESCRIPTION
1	423645	Seat
2	180166	Bracket Pivot Fender
3	140675	Strap, Asm Fender
6	73800600	Nut, Lock W/Ins. 3/8-16 unc
7	124181X	Spring, Seat Cprsn
8	171877	Bolt 5/16-18 unc x 3/4 w/Sems
10	196977	Pan, Seat
21	171852	Bolt, Shoulder 5/16-18
37	73800500	Nut, Lock 5/16-18 unc

KEY PART NO.	NO.	DESCRIPTION
40	197661	Handle Slide Seat
41	198200	Spring Latch Seat
43	74760612	Bolt 3/8-16 x 3/4
44	19133812	Washer 13/32 x 2-3/8 x 12 Ga.

**NOTE:** All component dimensions given in U.S. inches  
 1 inch = 25.4 mm

TRACTOR - - MODEL NUMBER 917.288513  
MOWER DECK



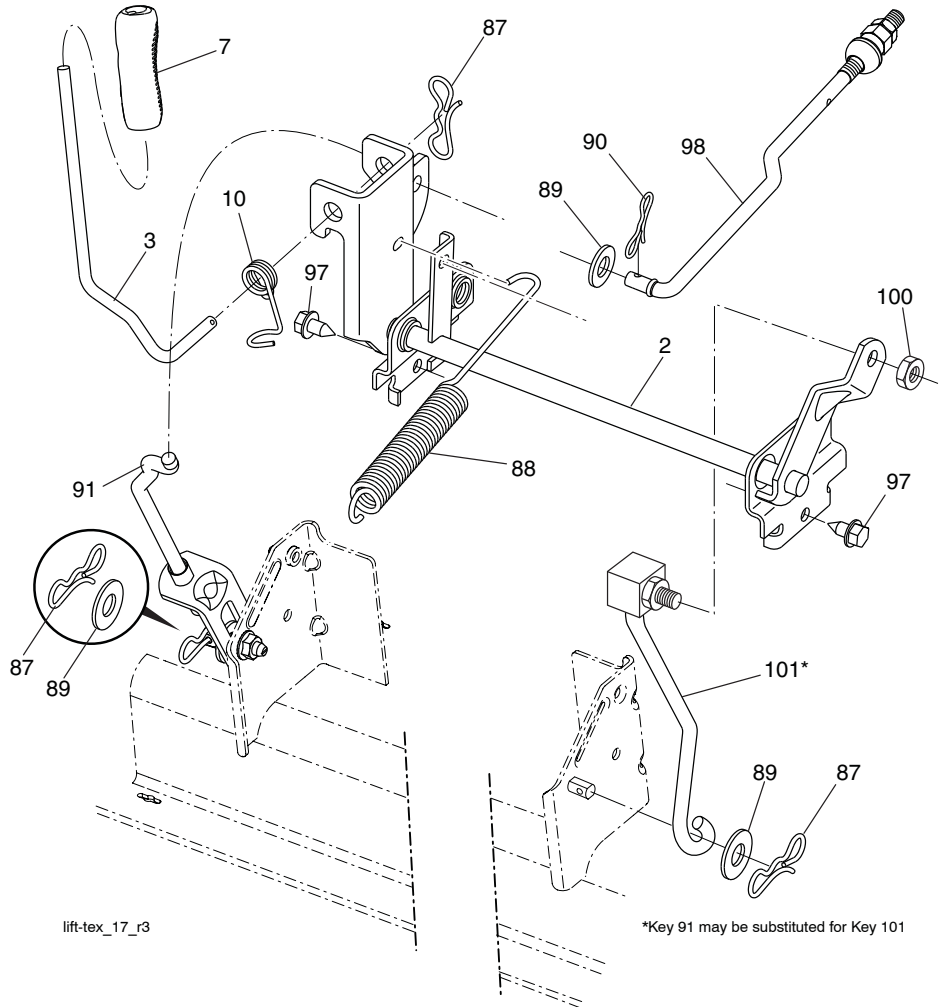
**TRACTOR - - MODEL NUMBER 917.288513**

**MOWER DECK**

<b>KEY PART NO.</b>	<b>PART NO.</b>	<b>DESCRIPTION</b>	<b>KEY PART NO.</b>	<b>PART NO.</b>	<b>DESCRIPTION</b>
1	196495X615	Mower Housing	67	198398X667	Handle, Clutch Cable
2	72140506	BoltRDHD.SQNK 5/16-18uncx3/4	68	429636	V-Belt
6	195186	Arm Suspension	69	72140505	Bolt Rdhd Sqnk 5/16-18 x 5/8
7	416358	Screw 10 x .750 BOS Thread	70	199972	Clutch Asm. Manual
8	193003	Bolt/Washer Asm 7/16-20 unf	111	404784	Bracket, Gauge Wheel LH
11	424752	Blade, 3N1 Premium (For bagging or discharge)	112	404785	Bracket, Gauge Wheel RH
13	192872	Shaft Assembly, Mandrel	113	17000510	Screw 5/16-18
14	187281	Housing, Mandrel	116	4898H	Bolt, Shoulder
15	110485X	Bearing, Ball, Mandrel	117	188606	Wheel, Gauge
19	196539	Bolt, Shoulder	118	73930600	Nut, Crownlock 3/8-1
20	159770	Baffle, Vortex	119	19121414	Washer 13/32 x 7/8 x 14 Ga.
21	73680500	Nut, Crownlock 5/16-18 unc	122	197258	Keeper Belt Eng. LH
23	192557	Bracket, Deflector	123	197259	Keeper Belt Eng. RH
24	105304X	Cap, Sleeve	144	199204	Keeper Belt
25	197026	Spring, Torsion, Deflector	145	193197	Pulley, Idler, Flat
26	110452X	Nut, Push	147	401971	Spring Return
27	424469	Shield, Deflector	152	435111	Cable Clutch Manual w/Spr.
29	131491	Rod, Hinge	188	195161	Stud Fastener
30	173984	Screw Thdrol Rolling Wsh Hd	189	73900500	Nut Lock Hex Flange
31	187690	Washer, Spacer	192	197260	Bracket Brake Stand LH
32	197473	Pulley, Mandrel	195	17000612	Screw Hexwsh Thdr 3/8-16 x 3/4
33	400234	Nut, Toplock, Flanged	241	152927	Screw
34	72110612	Bolt Carr Sh. 3/8-16 x 1-1/2 Gr. 5	242	415598	Washout Port
36	197379	Pulley Idler	--	416405	Quick Connect Coupling
37	19131316	Washer 13/32 x 13/16 x 16 Ga.	--	437732	Replacement Mower, Complete
38	432520	Keeper Belt LH Mandrel	--	192870	Mandrel Assembly (Includes housing, shaft assembly, and bearing only - pulley/nut/washer and blade bolt/washers not included)
40	73900600	Nut, Lock Flg. 3/8-16 unc			
42	198410	Spring Torsion Brake			
43	197256	Spring Torsion Retainer			
46	137729	Screw Thd Roll 1/4-20 x 5/8			
47	197250	Bracket Clutch Cable			
55	437110	Arm, Idler			
56	199092	Spacer, Retainer			
57	17000616	Screw Hexwsh Thd 3/8-16 x 1			
59	141043	Guard, Tuv Idler (94)			
60	197261	Arm Brake Mower			
62	72110616	Bolt Rdhd Sqnk 3/8-16 unc x 2			
63	199477	Arm Brake Mower			
64	199790	Linkage Brake			

**NOTE:** All component dimensions given in U.S. inches  
1 inch = 25.4 mm

**TRACTOR - - MODEL NUMBER 917.288513**  
**LIFT ASSEMBLY**



KEY NO.	PART NO.	DESCRIPTION
2	422027	Shaft Asm., Cross Lift
3	195231	Lever Asm., Lift RH
7	196492X428	Grip, Lever
10	196314	Spring Torsion
87	194209	Pin Cotter 7/16 Bow Tie Lock
88	410710	Spring Lift Assist
89	19191912	Washer Clear Zinc
90	194208	Pin Cotter 5/16 Bow Tie Lock
91	195181	Link Lift Susp Mower Rear

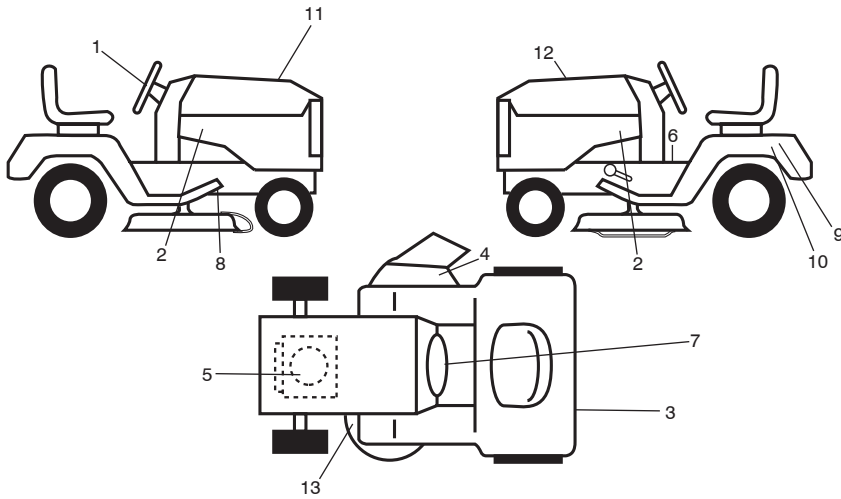
KEY NO.	PART NO.	DESCRIPTION
97	17000612	Screw 3/8-16 x .75
98	195270	Link Lift Susp. Front Mower
100	73930600	Nut Centerlock 3/8-16 unc
101	407003	Link Asm Lift Fixed

**NOTE:** All component dimensions given in U.S. inches  
 1 inch = 25.4 mm



## TRACTOR -- MODEL NUMBER 917.288513

### DECALS



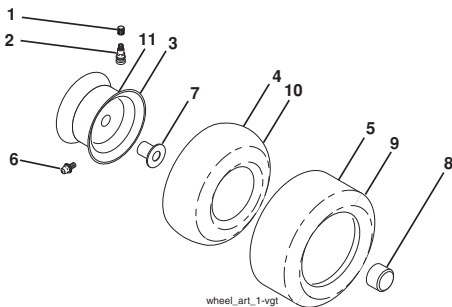
#### KEY PART NO. NO.

KEY PART NO.	NO.	DESCRIPTION
1	439525	Decal, Steering
2	441123	Decal, Hood
3	441121	Decal, Fender
4	170563	Decal, Mower
5	426028	Decal, Engine HP
6	434529	Decal, Fender Warning
7	438160	Decal, Lower Dash
8	421534	Decal, V-Belt Schematic Drive
9	434996	Decal, Battery Warning
10	434995	Decal, Battery

#### KEY PART NO. NO.

KEY PART NO.	NO.	DESCRIPTION
11	443035	Decal, Replacement
12	426076	Decal, Warning Customer Responsibility
13	160396	Decal, Mower V-Belt SCH.
--	193226X428	Pad, Footrest LH
--	193227X428	Pad, Footrest RH
--	166960	Decal, Bypass
--	441296	Manual, Operator's (Eng/Span)
--	443049	Manual, Parts

### WHEELS & TIRES



#### KEY PART NO. NO.

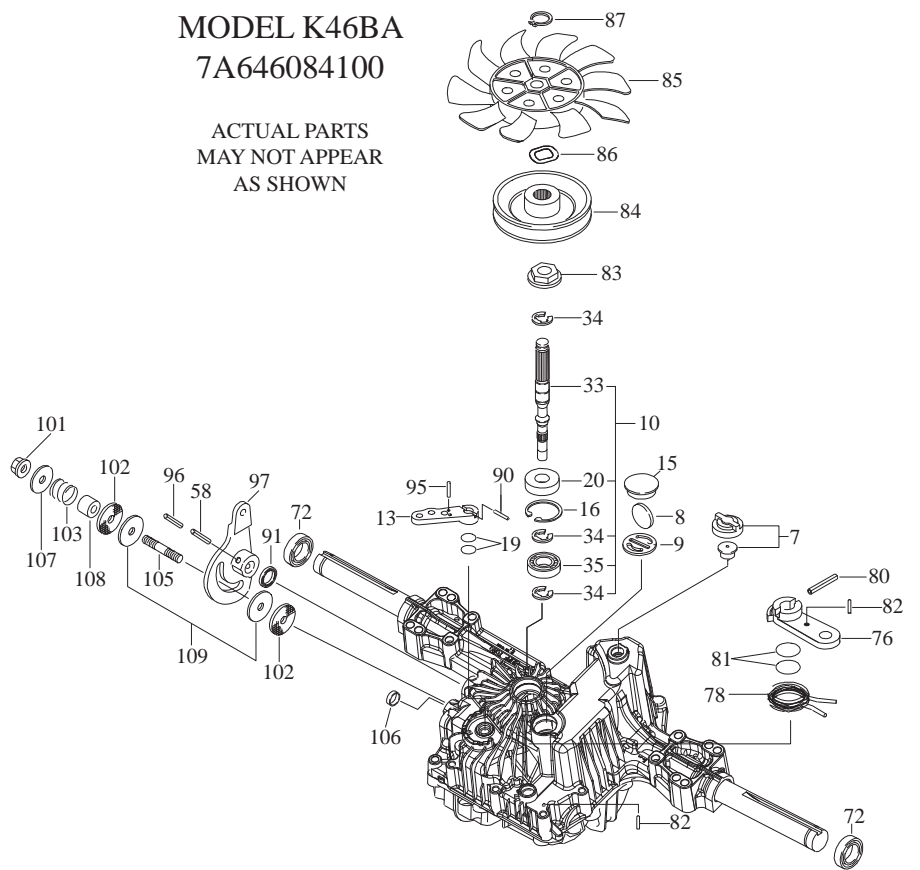
KEY PART NO.	NO.	DESCRIPTION
1	59192	Cap, Valve, Tire
2	65139	Stem, Valve
3	106732X613	Rim Assembly, Front
4	59904	Tube, Front
5	106222X	Tire, Front
6	278H	Fitting, Grease
7	9040H	Bearing, Flange
8	104757X428	Cap, Axle (Front Wheel Only)
9	122082X	Tire, 20 X 10-8.6 TurfSaver
10	7152J	Tube, Rear
11	106108X613	Rim Assembly, Rear
--	144334	Sealant, Tire (10 oz. Tube)

**NOTE:** All component dimensions given in U.S. inches  
1 inch = 25.4 mm

**TRACTOR - - MODEL NUMBER 917.288513**  
**TUFFTORQ TRANSAXLE - MODEL NUMBER K46 BA**

**MODEL K46BA**  
**7A646084100**

ACTUAL PARTS  
MAY NOT APPEAR  
AS SHOWN



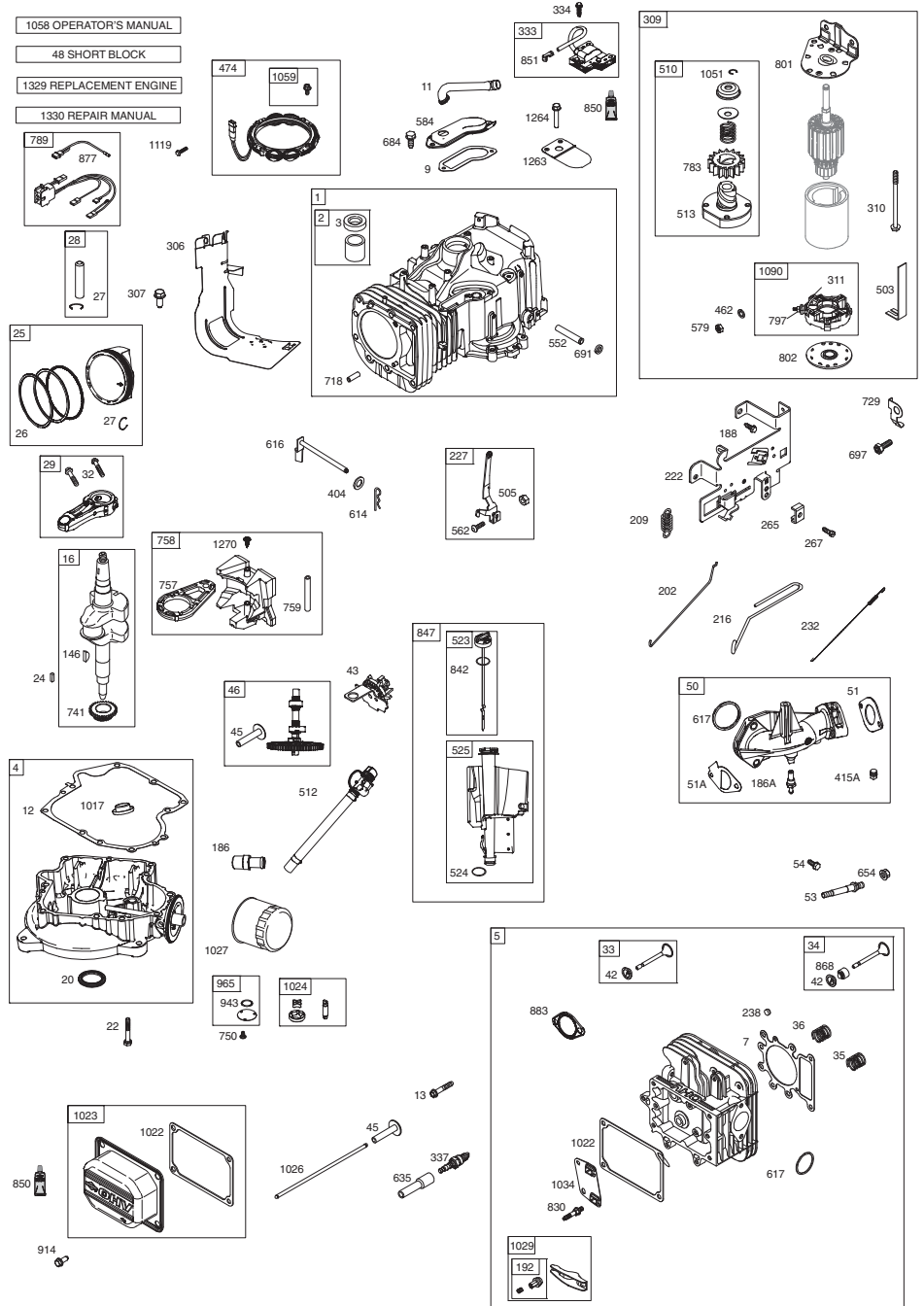
**TRACTOR - - MODEL NUMBER 917.288513**

**TUFFTORQ TRANSAXLE - MODEL NUMBER K46 BA**

<b>KEY NO.</b>	<b>PART NO.</b>	<b>DESCRIPTION</b>
7	414395	VENT VALVE 15
8	414396	MAGNET
9	414397	MAGNET HOLDER
10	415923	PUMP SHAFT/BEARING KIT
13	414398	BYPASS LEVER
15	414399	SEALING CAP 30
16	414400	SNAP RING C 35
19	414401	O-RING 1A P10A
20	414402	SEAL TC 153507
33	414403	PUMP SHAFT (STANDARD
34	414404	E-RING 15
35	414405	BEARING 6202C3
58	414406	ROLL PIN 6 * 40
72	414407	SEAL 19 * 32 * 8
76	414408	BRAKE LEVER
78	414409	BRAKE RETURN SPRING
80	414410	SPRING PIN 5 * 32
81	414411	O-RING 1A P12
82	414412	SPRING PIN 4 * 16
83	414413	SPINE COLLAR
84	414414	PULLEY L
85	414415	FAN, BLACK
86	414416	WAVE WASHER
87	414417	SNAP RING
90	414418	SPRING PIN 3.0A * 20
91	414419	OIL SEAL 16 * 22 * 03
95	415850	SPRING PIN 3.0A * 16
96	414420	ROLL PIN 3.5 * 40
97	414421	CONTROL LEVER
101	414216	LOCK NUT 10
102	414423	WASHER 10 * 40 * 4
103	414424	SPRING
105	414425	STUD 10 * 60
106	414426	SEALING CAP 18
107	414427	WASHER 10 * 36 * 2.8
108	414428	COLLAR 10 * 20 * 17
109	414429	FRICION PLATE KIT

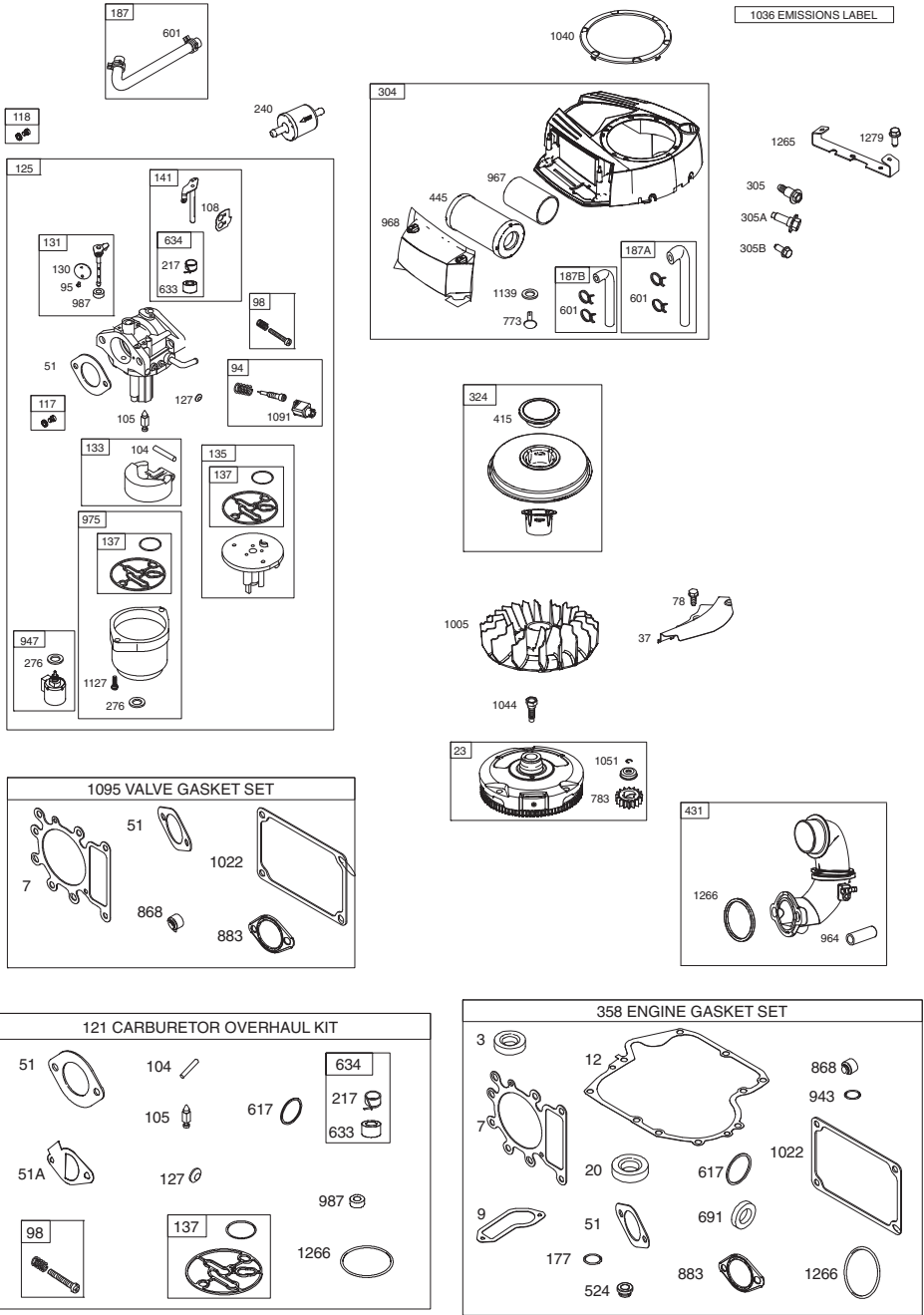
**NOTE:** All component dimensions given in U.S. inches  
1 inch = 25.4 mm

**TRACTOR - - MODEL NUMBER 917.288513**  
**BRIGGS & STRATTON ENGINE-MODEL NUMBER 331877, TYPE NUMBER 2371-G1**



**TRACTOR -- MODEL NUMBER 917.288513**

**BRIGGS & STRATTON ENGINE-MODEL NUMBER 331877, TYPE NUMBER 2371-G1**



**TRACTOR -- MODEL NUMBER 917.288513**  
**BRIGGS & STRATTON ENGINE-MODEL NUMBER 331877, TYPE NUMBER 2371-G1**

KEY PART NO.	PART NO.	DESCRIPTION	KEY PART NO.	PART NO.	DESCRIPTION
1	794128	Cylinder Assembly	133	694914	Float-Carburetor
2	399265	Bushing/Seal Kit (Magneto Side)	135	698780	Tube-Fuel Transfer
3	391086s	Seal-Oil (Magneto Side)	137	698781	Gasket-Float Bowl
4	697188	Sump-Engine	141	792777	Kit-Choke Shaft
5	796026	Head-Cylinder	146	691639	Key-Timing
7	794114	Gasket-Cylinder Head	186	796532	Hose-Connector (Oil Drain Hose)
9	697109	Gasket-Breather			
11	794683	Tube-Breather	186A	794873	Hose-Connector (Intake Manifold)
12	697110	Gasket-Crankcase			
13	793988	Screw (Cylinder Head)	187	791805	Line-Fuel (Formed) (Cut to Required Length)
16	797585	Crankshaft			
20	795387	Seal-Oil (PTO Side)	187A	791806	Line-Fuel (Formed) (21" Long) (Cut to Required Length)
22	692125	Screw (Crankcase Cover/Sump)			
23	698281	Flywheel	187B	791744	Line-Fuel (Formed) (14" Long) (Cut to Required Length)
24	796335	Key-Flywheel (Steel)			
25	795858	Piston Assembly (Standard)	188	691693	Screw (Control Bracket)
	795877	Piston Assembly (020" Oversize)	192	691986	Adjuster-Rocker Arm
26	794126	Ring Set (Standard)	202	691841	Link-Mechanical Governor
	794127	Ring Set (.020" Oversize)	209	692208	Spring-Governor (Green)
27	698469	Lock-Piston Pin	216	691840	Link-Choke
28	795861	Pin-Piston	217	695409	Spring-Choke Return
29	794571	Rod-Connecting	222	694042	Bracket-Control
32	791118	Screw (Connecting Rod)	227	691374	Lever-Governor Control
33	792868	Valve-Exhaust	232	691842	Spring-Governor Link
34	791935	Valve-Intake	238	691843	Cap-Valve
35	691279	Spring-Valve (Intake)	240	691035	Filter-Fuel
36	691279	Spring-Valve (Exhaust)	265	691024	Clamp-Casing
37	699882	Guard-Flywheel	267	794904	Screw (Casing Clamp)
42	499586	Keeper-Valve	276	695410	Washer-Sealing
43	691968	Slinger-Governor/Oil	304	798670	Housing-Blower
45	690564	Tappet-Valve	305	697102	Screw (Blower Housing) (1/4-20x1.14)
46	793880	Camshaft			
48	795446	Short Block	305A	793376	Screw (Blower Housing) (1/4-20x.68)
50	796180	Manifold-Intake			
51	692137	Gasket-Intake	305B	795891	Screw (Blower Housing) (Blower Housing to Elbow)
51A	794312	Gasket-Intake			
53	690227	Stud (Carburetor)	306	794953	Shield-Cylinder
54	691148	Screw (Intake Manifold)	307	691693	Screw (Cylinder Shield)
78	691693	Screw (Flywheel Guard)	309	693551	Motor-Starter
94	793610	Kit-Idle Mixture	310	690323	Screw (Starter Motor)
95	690718	Screw (Throttle Valve)	311	497608	Brush Set
98	695408	Kit-Idle Speed	324	796309	Screen/Cup Assembly
104	694918	Pin-Float Hinge	333	795315	Armature-Magneto
105	696136	Valve-Float Needle	334	691061	Screw (Magneto Armature)
108	695419	Valve-Choke	337	491055s	Plug-Spark
117	796251	Jet-Main (Standard)	358	796187	Gasket Set-Engine
118	791406	Jet-Main (High Altitude)	404	691691	Washer (Governor Crank)
121	796184	Kit-Carburetor Overhaul	415794129		Plug (Cover/Retainer)
125	796587	Carburetor	415A	794903	Plug (Intake Manifold)
127	690727	Plug-Welch	431799043		Elbow-Intake
130	792747	Valve-Throttle	445793569		Filter-Air Cleaner Cartridge
131	792765	Kit-Throttle Shaft	462691261		Washer (Starter Cable)

## TRACTOR - - MODEL NUMBER 917.288513

### BRIGGS & STRATTON ENGINE-MODEL NUMBER 331877, TYPE NUMBER 2371-G1

KEY PART NO. NO.	DESCRIPTION	KEY PART NO. NO.	DESCRIPTION
474696459	Alternator	965499613	Cover-Oil Pump
503691532	Strap-Starter	967793685	Filter-Pre Cleaner
505691251	Nut (Governor Control Lever)	968795757	Cover-Air Cleaner
510693699	Drive-Starter	975699502	Bowl-Fuel
512796530	Hose-Oil Drain	987698777	Seal-Throttle Shaft
513692024	Clutch-Drive	1005 796084	Fan-Flywheel
523699908	Dipstick	1017 796981	Screen-Oil Pump
524691032	Seal-Dipstick Tube	1022 272475s	Gasket-Rocker Cover
525697184	Tube-Dipstick	1023 797421	Cover-Rocker
552697144	Bushing-Governor Crank	1024 794644	Pump-Oil
562691119	Screw (Governor Control Lever)	1026 692003	Rod-Push (Intake)
579691029	Nut (Starter Cable)	692011	Rod-Push (Exhaust)
584794682	Cover-Breather Passage	1027 795890	Filter-Oil
601791850	Hose-Clamp (Green)	1029 691751	Arm-Rocker
614691620	Pin-Cotter (Governor Crank)	1034 690822	Guide-Push Rod
616692012	Crank-Governor	1036	Label-Emissions (Available from a Briggs & Stratton Authorized Dealer)
617692138	Seal-O Ring (Intake Manifold) (Red)	1040 698368	Plate-Trim
633699813	Seal-Choke/Throttle (Choke Shaft)	1044 698139	Screw (Flywheel)
634698779	Spring/Seal Assembly	1051 691265	Ring-Retaining
635691909	Boot-Spark Plug	1058 276344	Operator's Manual
654690958	Nut (Carburetor)	1059 698516	Kit-Screw/Washer (Alternator)
684697157	Screw (Breather Passage Cover)	1090 691293	Retainer-Brush
691692407	Seal-Governor Shaft	1091 691333	Cap-Limiter
697690372	Screw (Drive Cap)	1095 794152	Gasket Set-Valve
718690959	Pin-Locating	1119 691183	Screw (Alternator)
729691224	Clip-Wire	1127 695407	Screw (Float Bowl)
741697128	Gear-Timing	1139 796449	Washer (Fuel Pump)
750790832	Screw (Oil Pump Cover)	1263 697124	Reed-Breather
757793242	Link-Counterweight	1264 697104	Screw (Breather Reed)
758793763	Counterweight	1265 794151	Support-Blower Housing
759697392	Pin-Counterweight	1266 691917	Seal-O Ring (Intake Elbow) (Red)
773796448	Retainer (Fuel Pump)	1270 793243	Plug-AVS Counterweight
783693713	Gear-Pinion	1329	Replacement Engine (Not Available at this printing)
789698329	Harness-Wiring	1330	276781 Repair Manual
797693167	Nut (Brush Retainer)		
801691283	Cap-Drive		
802691286	Cap-End		
830691095	Stud-Rocker Arm	Engine Gasket Set	Key No. 358
842691031	Seal-O Ring (Dipstick Tube)	Valve Gasket Set	Key No. 1095
847790442	Dipstick/Tube Assembly	Carburetor Overhaul Kit	Key No. 121
850100106	Sealant-Liquid		
851692424	Terminal-Spark Plug		
868690968	Seal-Valve		
877790544	Wire/Connector-Alternator		
883692236	Gasket-Exhaust		
914697551	Screw (Rocker Cover)		
943690589	Seal-O Ring (Oil Pump Cover)		
947699915	Solenoid-Fuel		
964799159	Cap-Connector		

**NOTE:** All component dimensions given in U.S. inches  
1 inch = 25.4 mm

## NEED MORE HELP?

You'll find the answer and more on [managemyhome.com](http://managemyhome.com) – for free!

- Find this and all your other product manuals online.
- Get answers from our team of home experts.
- Get a personalized maintenance plan for your home.
- Find information and tools to help with home projects.

**manage  home**

brought to you by Sears

## Get it fixed, at your home or ours!

### Your Home

For repair – **in your home** – of **all** major brand appliances, lawn and garden equipment, or heating and cooling systems, **no matter who made it, no matter who sold it!**

For the replacement parts, accessories and owner's manuals that you need to do-it-yourself.

For Sears professional installation of home appliances and items like garage door openers and water heaters.

**1-800-4-MY-HOME**<sup>®</sup> Anytime, day or night  
(1-800-469-4663) (U.S.A. and Canada)  
[www.sears.com](http://www.sears.com) [www.sears.ca](http://www.sears.ca)

### Our Home

For repair of carry-in products like vacuums, lawn equipment, and electronics, call or go on-line for the nearest **Sears Parts and Repair Center.**

**1-800-488-1222** Anytime, day or night (U.S.A. only)  
[www.sears.com](http://www.sears.com)

To purchase a protection agreement (U.S.A.) or maintenance agreement (Canada) on a product serviced by Sears:

**1-800-827-6655** (U.S.A.) **1-800-361-6665** (Canada)

Para pedir servicio de reparación a domicilio, y para ordenar piezas:

**1-888-SU-HOGAR**<sup>®</sup>  
(1-888-784-6427)

Au Canada pour service en français:

**1-800-LE-FOYER**<sup>MC</sup>  
(1-800-533-6937)  
[www.sears.ca](http://www.sears.ca)

**Sears**

© Sears Brands, LLC

® Registered Trademark / <sup>TM</sup> Trademark / <sup>SM</sup> Service Mark of Sears Brands, LLC

® Marca Registrada / <sup>TM</sup> Marca de Fábrica / <sup>SM</sup> Marca de Servicio de Sears Brands, LLC

<sup>MC</sup> Marque de commerce / <sup>MD</sup> Marque déposée de Sears Brands, LLC