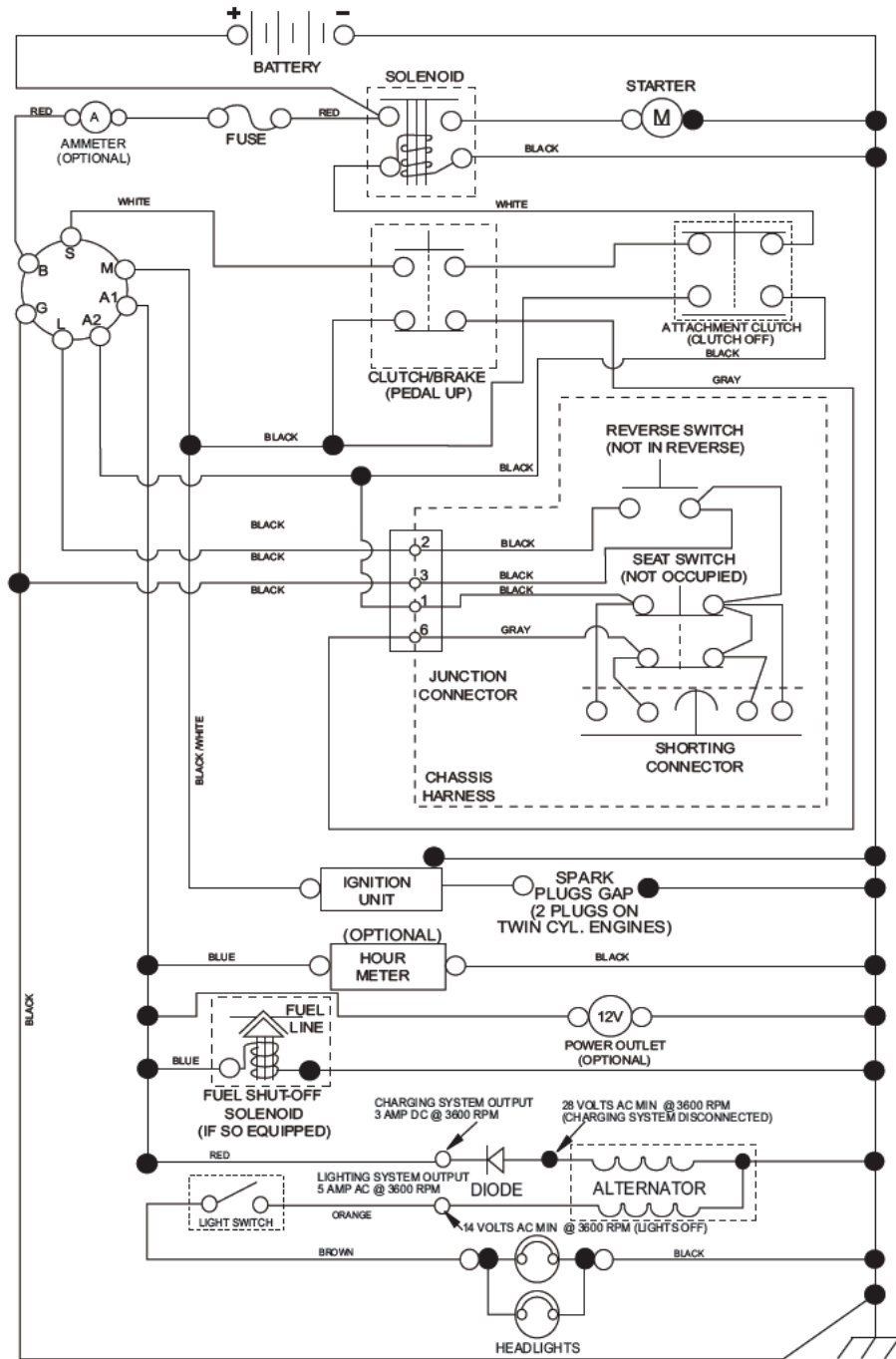


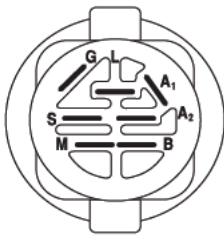
TRACTOR - - MODEL NUMBER 917.203830

SCHEMATIC

SCH11

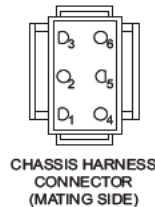


NOTE
YOUR TRACTOR IS EQUIPPED WITH A SPECIAL ALTERNATOR SYSTEM. THE LIGHTS ARE NOT CONNECTED TO THE BATTERY, BUT HAVE THEIR OWN ELECTRICAL SOURCE. BECAUSE OF THIS, THE BRIGHTNESS OF THE LIGHTS WILL CHANGE WITH ENGINE SPEED. AT IDLE THE LIGHTS WILL DIM. AS THE ENGINE IS SPEEDED UP, THE LIGHTS WILL BECOME THEIR BRIGHTEST.



IGNITION SWITCH

POSITION	CIRCUIT	"MAKE"
OFF	M+G+A1	
RUN/OVERRIDE	B+A1	
RUN	B+A1	L+A2
START	B+S+A1	



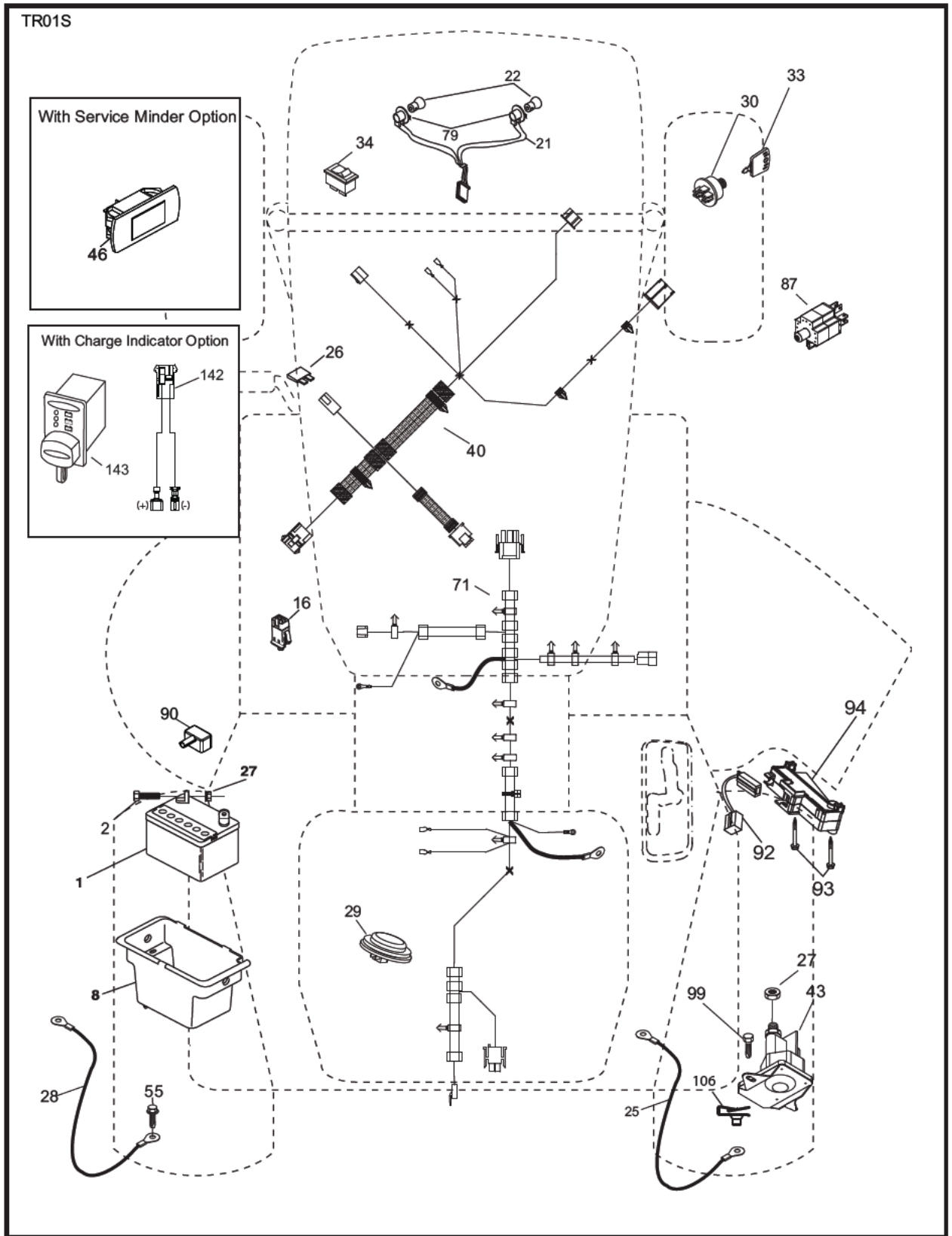
WIRING INSULATED CLIPS
NOTE: IF WIRING INSULATED CLIPS WERE REMOVED FOR SERVICING OF UNIT, THEY SHOULD BE RE-INSTALLED TO PROPERLY SECURE YOUR WIRING.

● NON-REMOVABLE CONNECTIONS

○ REMOVABLE CONNECTIONS

TRACTOR - - MODEL NUMBER 917.203830

ELECTRICAL



ELECTRICAL

TRACTOR - - MODEL NUMBER 917.203830

KEY NO.	PART NO.	DESCRIPTION
1	163465	Battery
2	74760412	Bolt Hex Hd 1/4-20 unc x 3/4
8	193228	Box Battery
16	176138	Switch Interlock Push-In
21	400252	Harness Socket Light W/4152J
22	4152J	Bulb Light
25	581498001	Cable Starter
26	175158	Fuse
27	73510400	Nut Keps Hex 1/4-20 unc
28	421686	Cable, Ground
29	401545	Switch, Seat
30	193350	Switch, Ign
33	411932	Key/Chain
34	110712X	Switch Light / Reset
40	581023101	Harness Ign. Dash
43	192507	Solenoid
55	17060512	Screw Thdrol 5/16-18 x 3/4 TYTT
71	581023001	Harness Ign. Chassis
79	175242	Bulbholder Asm. Incan Descent
87	197802	Switch Interlock Clutch Cable
90	435395	Cover Terminal Battery
92	196615	Harness Pigtail Reverse Switch
93	192540	Screw Plastite 10 - 14 x 2 00
94	191834	Module Reverse Ros
99	17670412	Screw 1/4-20 x 3/4

NOTE: All component dimensions given in U.S. inches
1 inch = 25.4 mm

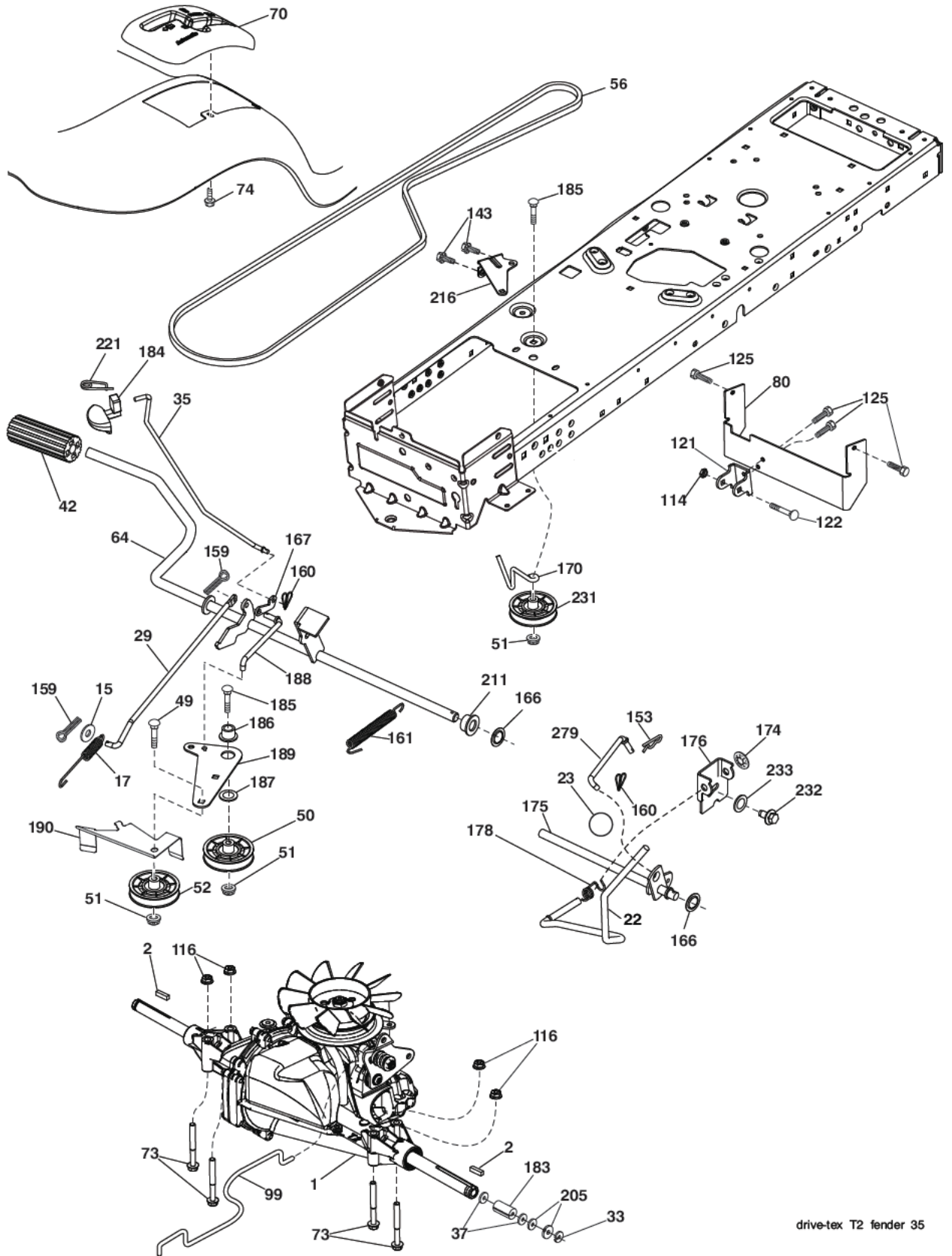
TRACTOR - - MODEL NUMBER 917.203830
CHASSIS ASSEMBLY

KEY PART NO. NO.	DESCRIPTION	
5	580485803	Dash
14	580354403	Hood
15	580485601	Lens LH
18	580485302	Grille
25	580484501	Lens RH
34	580910801	Plate engine
35	191111116	Washer 11/32 x 11/16 x 16 Ga.
36	17060512	Screw 5/16-18 x 3/4
37	414872X615	Fender
52	73680500	Nut Crown lock 5/16-18
58	412280	Drawbar Upper
62	72110608	Bolt 3/8-16 x 1 Gr. 5
68	17490508	Screw Thdrol 5/16-18 x 1/2
102	4497H	Retainer Spring 1"
118	19131316	Washer 13/32 x 13/16 x 16 Ga.
119	73680600	Nut Crownlock 3/8-16
125	581684801	Clip Fuel Line
130	416358	Screw # 10 x .750 BOS Thread
137	407590	Bumper Dash
138	193224X428	Cupholder
146	581857901	Bolt
150	580485503	Duct Heat Hood
151	580663302	Bracket Pivot
152	199535	Shield Browning/Debris
159	17000612	Screw Hexwsh Thdrol 3/8-16 x 3/4
162	142432	Screw Hex Wsh Hi-Lo 1/4 x 1/2
175	196304	Crossmember
176	400776	Screw 10-24 x 5/8 Wshd Qdrx
177	195227	Bushing Steering
180	415063	Chassis
181	193102X428	Bushing Mtg. Fender Crgo.
182	406859	Dash Lower
183	74520520	Bolt 5/16-18 x 1-1/4
189	17000512	Screw 5/16-18 x 3/4
191	580485101	Mylar Headlight/Reflective LensRH
194	73900500	Nut Lock Hex Flange 5/16-18
195	401556X428	Plug Hole Dash 12V Adapter
196	414579	Console Asm. Deck Lift
202	580485001	C-Closeout Lwr Trm RH
203	580484801	C-Closeout Lwr Trm LH
205	580843706	Assembly Corner RH
206	580843806	Assembly Corner LH
213	74760512	Bolt hex HD 5/16-18 unc x 3/4
218	580897301	Pivot Hood Assy
228	195161	Stud Fastener
235	406129	Spacer Fender
236	73930500	Nut Center Lock 5/16-18
287	17600406	Screw Hex Washhead 1/4-20 x 3/8
289	199783X428	Plug Cruise/Phone Common YTGT
297	580484901	Mylar Headlight/Reflective Lens LH
298	580851001	Nut Push
306	73900600	Nut Lock
334	442537	Bracket Engine Plate
335	580484602	C-Side Closeout RH
336	580484402	C-Side Closeout LH
350	445143	Clip X-Mass Tree
363	580724501	Cap Talon Grille
364	17060408	Screw
---	404951X428	Plug Dash SRVMNDR

NOTE: All component dimensions given in U.S. inches
1 inch = 25.4 mm

TRACTOR - - MODEL NUMBER 917.203830

GROUND DRIVE



drive-tex T2 fender 35

TRACTOR - - MODEL NUMBER 917.203830

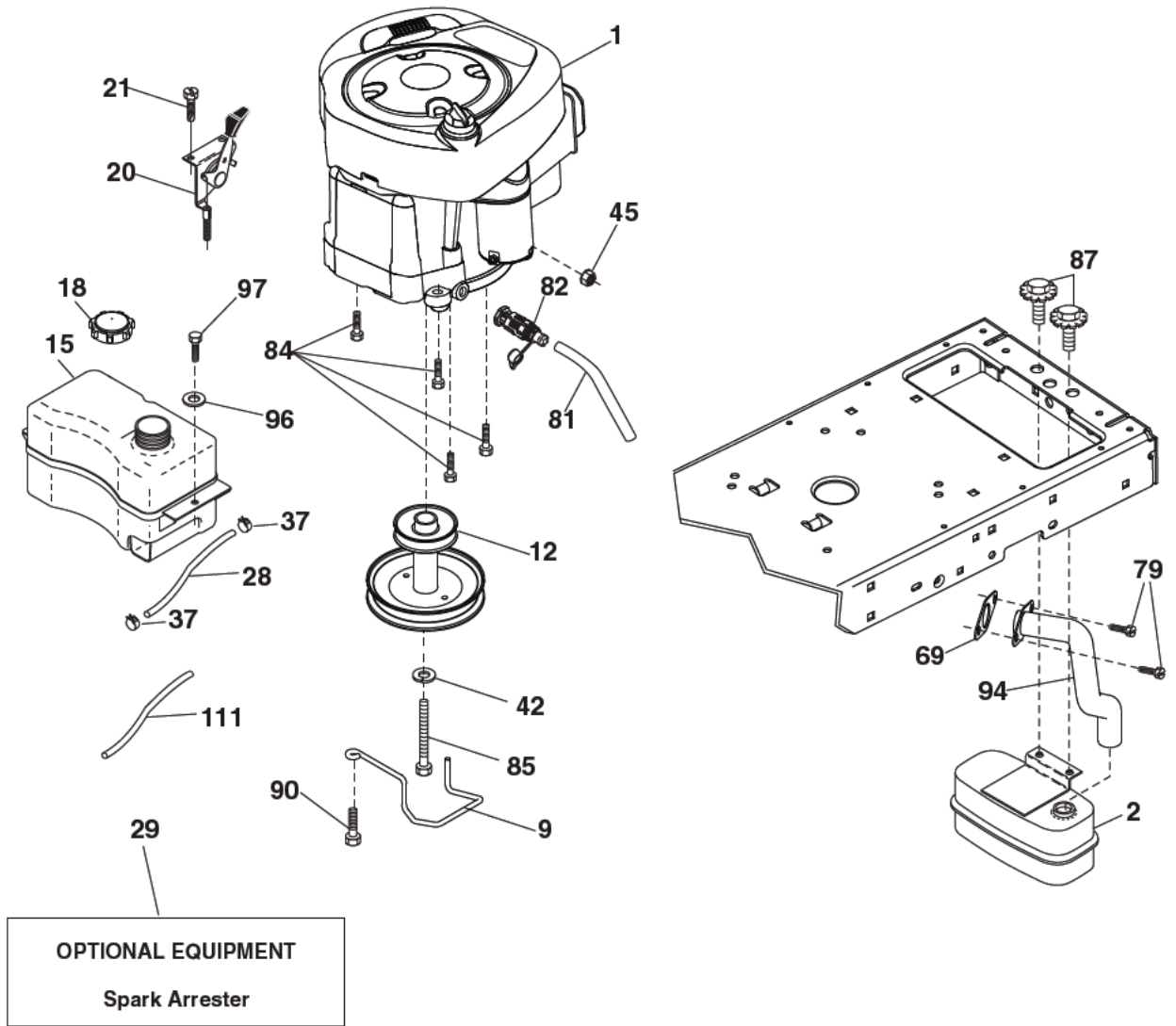
GROUND DRIVE

KEY PART NO. NO.	DESCRIPTION	KEY PART NO. NO.	DESCRIPTION
1	----- Transaxle, T2-CDBE-5X1A-18C1 (581115601)(Order parts from transaxle manufacturer.)	159	76020412 Pin Cotter 1/8 x 3/4
2	123583X Key Square	160	169484 Retainer Clip
15	19131316 Washer 13/32 x 13/16 x 16 Ga.	161	105709X Spring, Return, Clutch
17	197296 Spring, Brake	166	429164 Nut Push .625
22	197660 Rod Shift	167	405257 Latch Brake Parking
23	140845 Knob	170	413430 Keeper Belt Centerspan
29	581506401 Rod, Brake	174	197289 Nut Push
33	12000001 Ring E	175	408539 Shaft Asm Shift
35	583864501 Rod, Brake, Park	176	196214 Arm Clevis Rod Shift
37	121749X Washer 25/32 x 1-1/4 x 16	178	197456 Spring Shift
42	8883R Cover, Foot Pedal	183	156972 Spacer Axle
49	72110614 Bolt	184	196439X667 Handle Parking Brake
50	194327 Pulley Idler Flat	185	72110622 Bolt
51	73900600 Lock Nut 3/8-16	186	194321 Spacer Retainer
52	194326 Idler V-Groove	187	19133210 Washer
56	125907X V-Belt, Drive	188	194323 Link Clutch Ground Drive
64	196200 Shaft Asm. Pedal Brake Control	189	194317 Bellcrank Ground Drive
70	193220X428 Console	190	194318 Keeper Bellcrank Ground Drive
73	74490544 Bolt Hex 5/16-18 x 2-1/2 G5	205	121748X Washer 25/32 x 1-5/8 x 16 Ga.
74	142432 Screw 1/4 x 1/2	211	196212 Bushing Shaft
80	581550701 Strap Torque	216	196131 Bracket Pulley Idler
99	408418 Rod Spring Bypass	221	403187 Retainer Spring Clip Handle
114	73800500 Nut Lock	231	407287 Idler V-Groove
116	73900500 Nut Lock Hex Flange 5/16-18	232	74780716 Bolt 7/16-14 x 1 Gr 5
121	175611 Bracket Strap Torque	233	405296 Washer Serrated
122	72010520 Bolt 5/16-18 x 2.50	279	424155 Link Shift
125	17000512 Screw 5/16-18 x 3/4		
143	17490508 Screw THDROL 5/16-18		
153	4497H Retainer Spring 1"		

NOTE: All component dimensions given in U.S. inches
1 inch = 25.4 mm

TRACTOR - - MODEL NUMBER 917.203830

ENGINE



engine-tex_BS_87

TRACTOR - - MODEL NUMBER 917.203830

ENGINE

KEY PART NO.	PART NO.	DESCRIPTION
1	— — — —	Engine B&S Model No. 33R877-0002-G1 (585366801)(See engine breakdown.)
2	580532301	Muffler
9	194319	Keeper Belt Engine
12	405140	Pulley Engine
15	433007	Tank Fuel
18	581176101	Cap Fuel
20	175438X428	Control Throttle/Choke
21	416358	Screw 10 x .750 BOS Thread
28	401137	Fuel Line
29	137180	Spark Arrester Kit
37	123487X	Clamp Hose
42	10040700	Washer Lock 7/16
45	73510400	Nut Keps Hex 1/4-20 unc
69	165291	Gasket
79	192334	Screw 5/16-18 x .75
81	148456	Tube Drain Oil Easy
82	428287	Valve Oil Drain
84	17060620	Screw 3/8-16 x 1-1/4
85	173937	Bolt Hex 7/16-20 x 4 x Gr. 5-1.5
87	171877	Bolt 5/16-18 unc x 3/4 w/Sems
90	17000616	Screw 3/8-16 x 1.0
94	581880901	Exhaust Tube
96	19091416	Washer 9/32 x 7/8 x 16 Ga.
97	17670412	Screw 1/4-20 x 3/4
111	414119	Purge Line

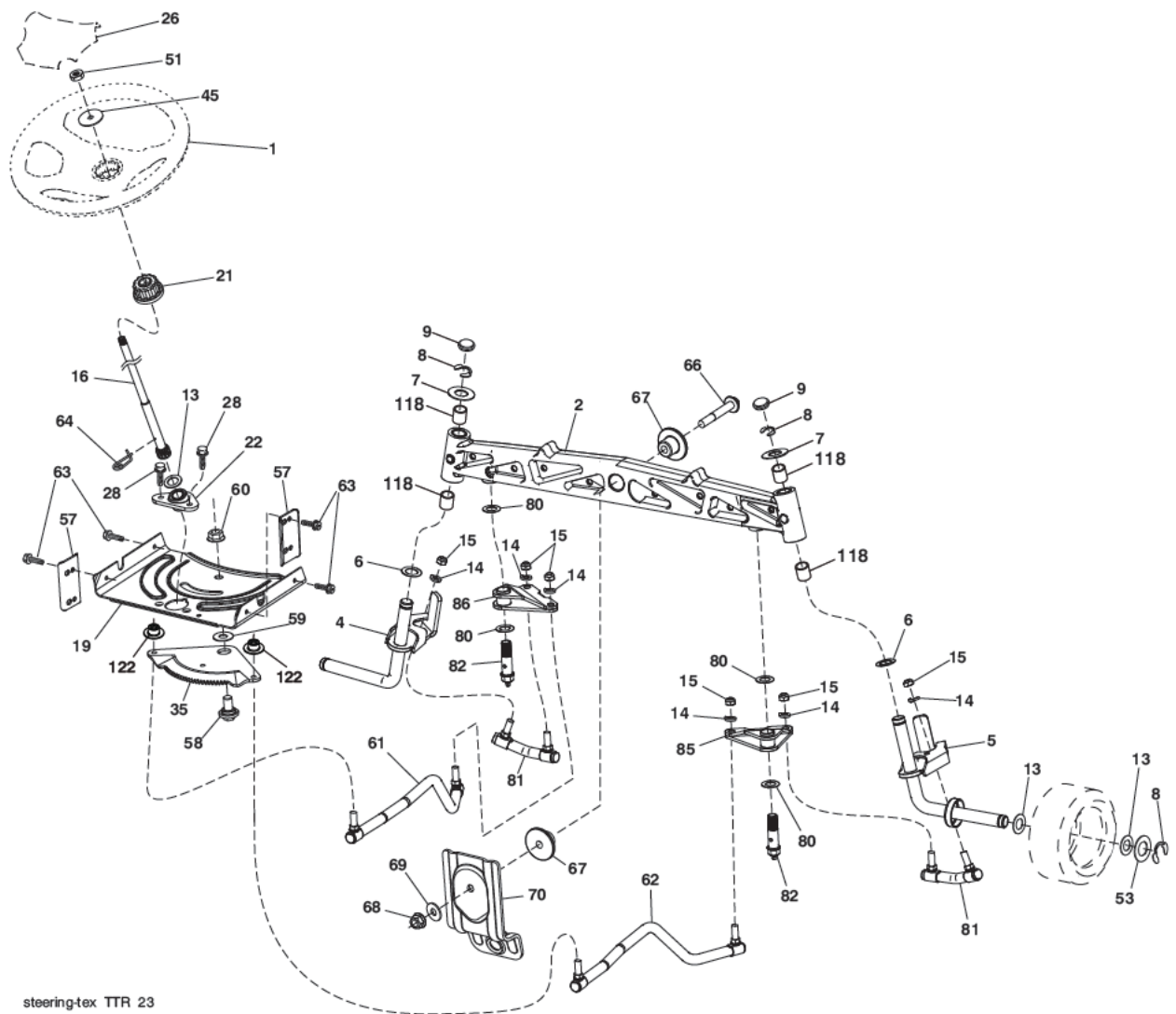
NOTE: All component dimensions given in U.S. inches
1 inch = 25.4 mm

Engine Power Rating Information

The gross power rating for individual gas engine models is labeled in accordance with SAE (Society of Automotive Engineers) code J1940 (Small Engine Power & Torque Rating Procedure), and rating performance has been obtained and corrected in accordance with SAE J1995 (Revision 2002-05). Torque values are derived at 3060 RPM; horsepower values are derived at 3600 RPM. Actual gross engine power will be lower and is affected by, among other things, ambient operating conditions and engine-to-engine variability. Given both the wide array of products on which engines are placed and the variety of environmental issues applicable to operating the equipment, the gas engine will not develop the rated gross power when used in a given piece of power equipment (actual "on-site" or net power). This difference is due to a variety of factors including, but not limited to, accessories (air cleaner, exhaust, charging, cooling, carburetor, fuel pump, etc.), application limitations, ambient operating conditions (temperature, humidity, altitude), and engine-to-engine variability. Due to manufacturing and capacity limitations, Briggs & Stratton may substitute an engine of higher rated power for this Series engine.

TRACTOR - - MODEL NUMBER 917.203830

STEERING ASSEMBLY



KEY PART NO. NO.

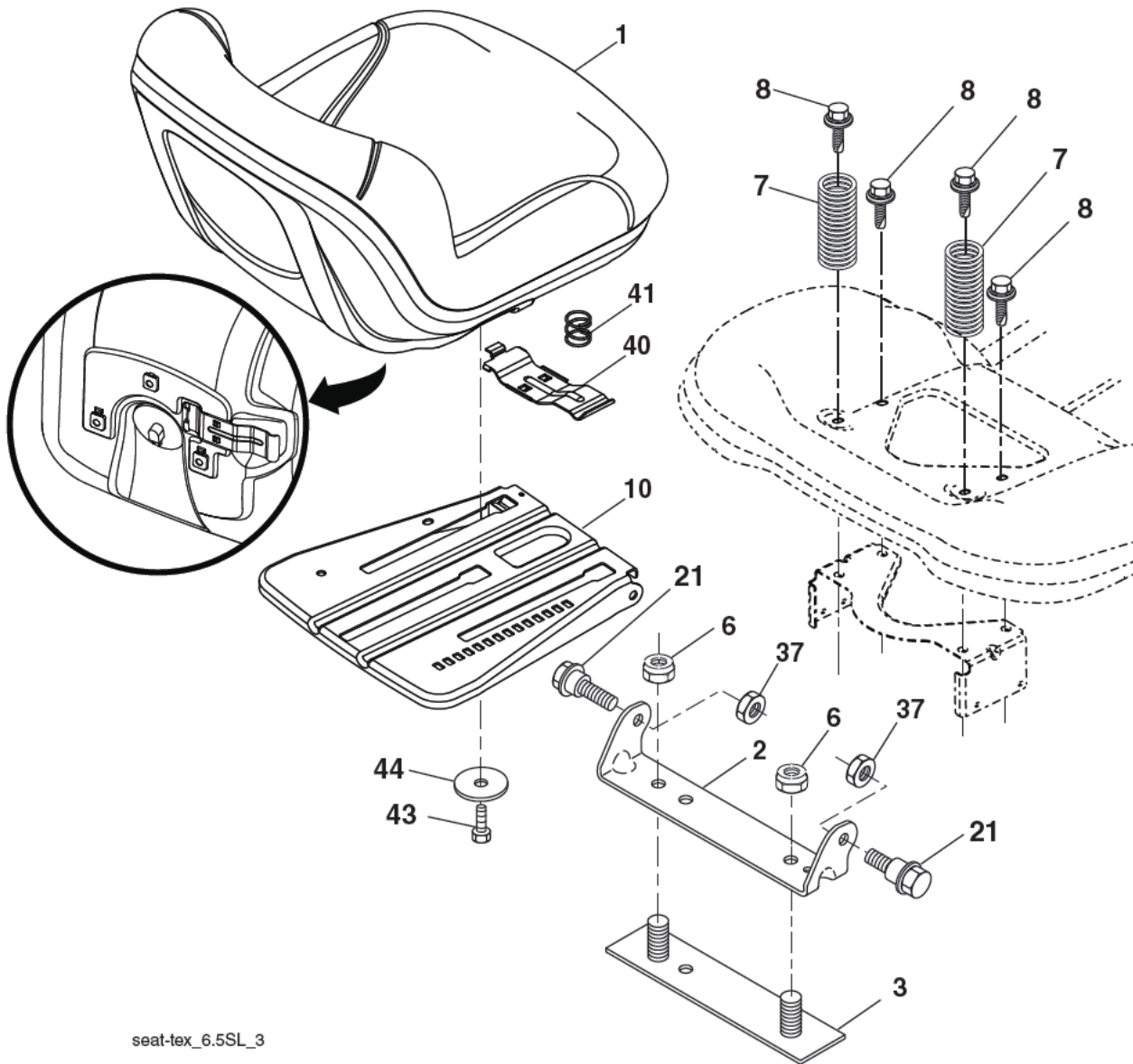
KEY PART NO.	NO.	DESCRIPTION
1	414803X428	Wheel, Steering
2	436870	Axle Asm., Front
4	436873	Spindle Asm., LH
5	436874	Spindle Asm., RH
6	6266H	Washer Thrust 0.75 x 1.23
7	121748X	Washer 25/32 x 1-5/8 x 16 Ga.
8	12000029	Ring, Clip #T5304-75
9	184946X667	Cap, Spindle
13	121749X	Washer 25/32 x 1-1/4 x 16 Ga.
14	10040600	Washer Lock 3/8
15	73540600	Nut, Crown Lock 3/8-24 unf
16	440785	Shaft Steering
19	194729	Plate Steering
21	437747	Adapter, Wheel Steering
22	194845	Bushing, Strg. Blk
26	414852X428	Insert, Wheel Steering
28	17000612	Screw 3/8-16 x 3/4
35	440770	Gear, Sector Plate
45	19183812	Washer 9/16 I.D. x 2-3/8 O.D.
51	73940800	Nut Hex Jam Toplock 1/2-20
53	188967	WasherHardened.793x1.637x.060
57	407465	Bracket Upstop

KEY PART NO. NO.

KEY PART NO.	NO.	DESCRIPTION
58	194747	Bolt Shoulder Sector Pivot CFM
59	194748	Washer Thrust Sector Steering
60	73971000	Nut Flange Lock 5/8-11
61	436884	Draglink, LH
62	436885	Draglink, RH
63	17000512	Screw 5/16-18 x 3/4
64	199849	Retainer Clip Spring Steering
66	71020748	Bolt Hex Fghd 7/16-14 x 3 Serr
67	194737	Bushing PM Front Axle
68	73900700	Nut Lock Flange 7/16-14 Gr. 5
69	199162	Washer 1.5 x .505 x .118
70	196197	Bracket Deck Susp. Front
80	1370H	Washer Thrust 5/8 x 1.10 x 1/32
81	436887	Link Cross RH
82	442147	Pivot bolt
85	441873	Pivot RH
86	441872	Pivot LH
122	444962	Cap Gear

NOTE: All component dimensions given in U.S. inches
1 inch = 25.4 mm

TRACTOR - - MODEL NUMBER 917.203830
SEAT ASSEMBLY



seat-tex_6.5SL_3

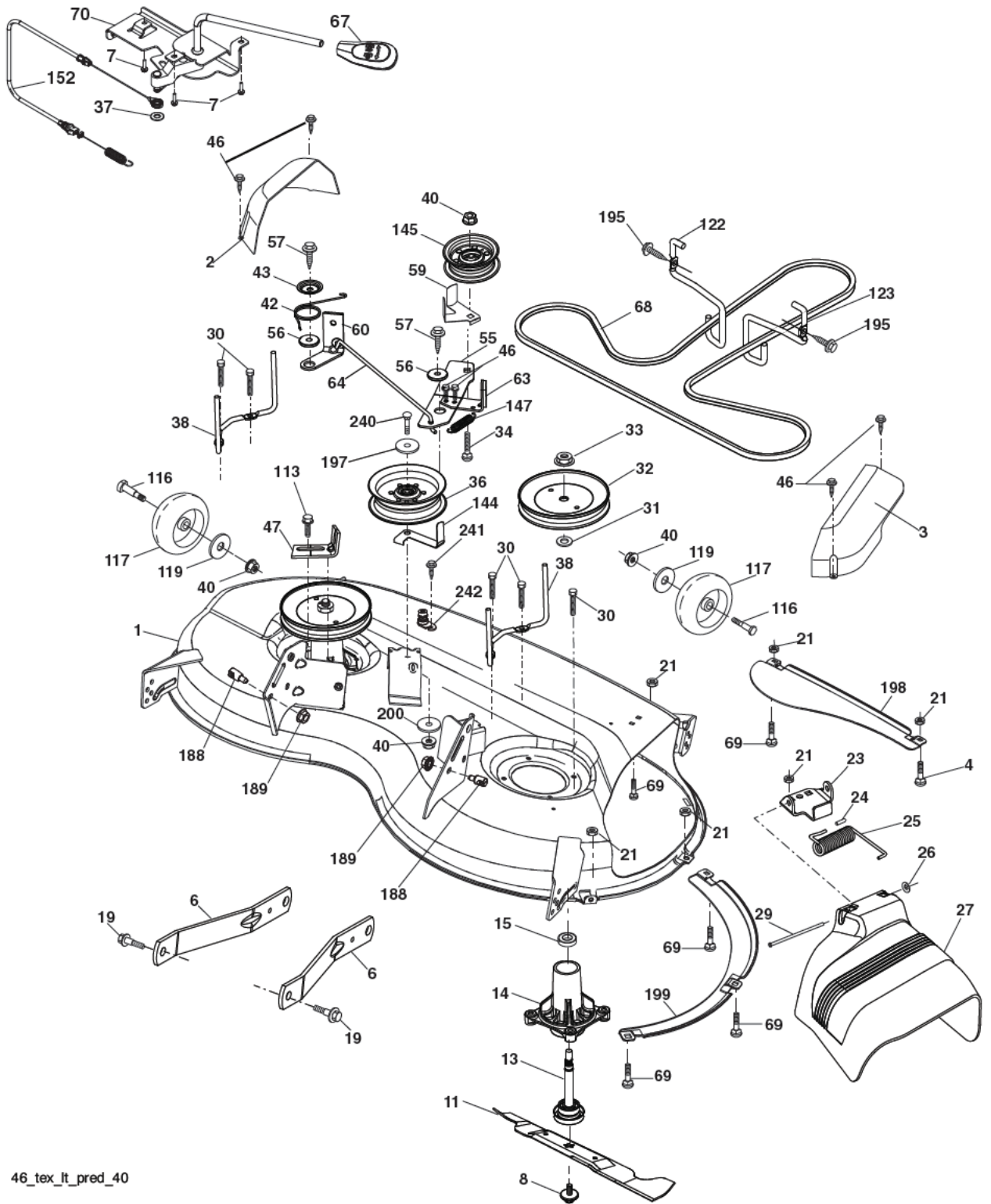
KEY PART NO.	PART NO.	DESCRIPTION
1	423645	Seat
2	180166	Bracket Pivot Fender
3	140675	Strap, Asm Fender
6	73800600	Nut, Lock W/Ins. 3/8-16 unc
7	124181X	Spring, Seat Cprsn
8	171877	Bolt 5/16-18 unc x 3/4 w/Sems
10	196977	Pan, Seat
21	171852	Bolt, Shoulder 5/16-18
37	73800500	Nut, Lock 5/16-18 unc

KEY PART NO.	PART NO.	DESCRIPTION
40	197661	Handle Slide Seat
41	198200	Spring Latch Seat
43	74760612	Bolt 3/8-16 x 3/4
44	19133812	Washer 13/32 x 2-3/8 x 12 Ga.

NOTE: All component dimensions given in U.S. inches
 1 inch = 25.4 mm

TRACTOR - - MODEL NUMBER 917.203830

MOWER DECK



46_tex_it_pred_40

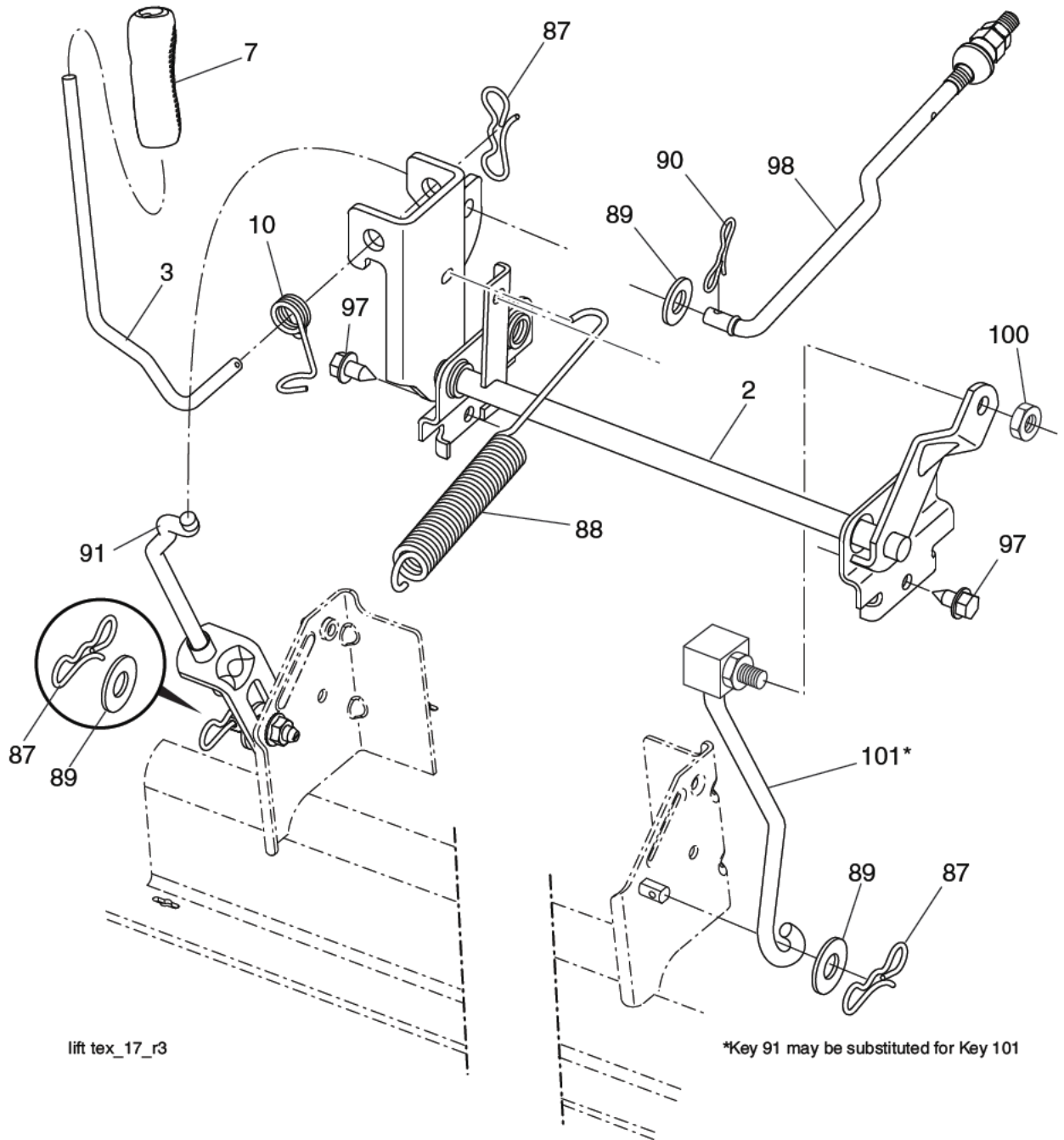
TRACTOR - - MODEL NUMBER 917.203830

MOWER DECK

KEY NO.	PART NO.	DESCRIPTION	KEY NO.	PART NO.	DESCRIPTION
1	448126X615	Mower Housing	64	405138	Linkage Brake
2	405507	Cover Mandrel LH	67	198398X667	Handle, Clutch Cable
3	405506	Cover Mandrel RH	68	405143	V-Belt
4	74760512	Bolt Hex	69	72140505	Bolt
6	195186	Arm Suspension	70	199972	Clutch Asm. Manual
7	416358	Screw 10 x .750 BOS Thread	113	17000510	Screw 5/16-18
8	193003	Bolt/Washer asm 7/16-20 unf	116	4898H	Bolt, Shoulder
11	405380	Blade Mower	117	188606	Wheel, Gauge
13	192872	Shaft Assembly, Mandrel	119	19121414	Washer 13/32 x 7/8 x 14 Ga.
14	187281	Housing, Mandrel	122	197258	Keeper Belt Eng. LH
15	110485X	Bearing, Ball, Mandrel	123	197259	Keeper Belt Eng. RH
19	196539	Bolt, Shoulder	144	199204	Keeper Belt
21	73680500	Nut	145	193197	Pulley, Idler, Flat
23	192557	Bracket, Deflector	147	401872	Spring Return Deck
24	105304X	Cap, Sleeve	152	584243501	Cable Clutch Manual w/Spr.
25	197026	Spring, Torsion, Deflector	188	195161	Stud Fastener
26	110452X	Nut, Push	189	73900500	Nut Lock Hex Flange
27	405357	Shield, Deflector	197	19131312	Washer 13/32 x 13/16 x 12 Ga.
29	131491	Rod, Hinge	198	403149	Baffle Center Front
30	173984	Screw Thdrol Rolling Wsh Hd	199	403150	Baffle Front RH
31	187690	Washer, Spacer	200	413524	Washer
32	197473	Pulley, Mandrel	240	74520636	Bolt Fin Hex 3/8-16 x 2-1/4 Gr. 5
33	400234	Nut, Toplock, Flanged	241	152927	Screw
34	72110612	Bolt Carr Sh. 3/8-16 x 1-1/2 Gr. 5	242	415598	Washout Port
36	197379	Pulley Idler	--	416405	Quick Connect Coupling
37	19131316	Washer 13/32 x 13/16 x 16 Ga.	--	192870	Mandrel Assembly (Includes housing (Key #14), shaft assembly (Key #13), and bearing only (Key #15) - pulley/nut/washer and blade bolt/washers not included)
38	432520	Keeper Belt LH Mandrel			
40	73900600	Nut, Lock Flg. 3/8-16 unc			
42	198410	Spring Trosion Brake			
43	197256	Spring Torsion Retainer			
46	137729	Screw	--	432250	Replacement Mower, Complete
47	197250	Bracket Clutch Cable			
55	197249	Arm, Idler			
56	199092	Spacer, Retainer			
57	17000616	Screw Hexwsh Thd 3/8-16 x 1			
59	141043	Guard, Tuv Idler (94)			
60	199471	Arm Brake Mower			
63	199477	Arm Brake Mower			

NOTE: All component dimensions given in U.S. inches
1 inch = 25.4 mm

TRACTOR - - MODEL NUMBER 917.203830
LIFT ASSEMBLY



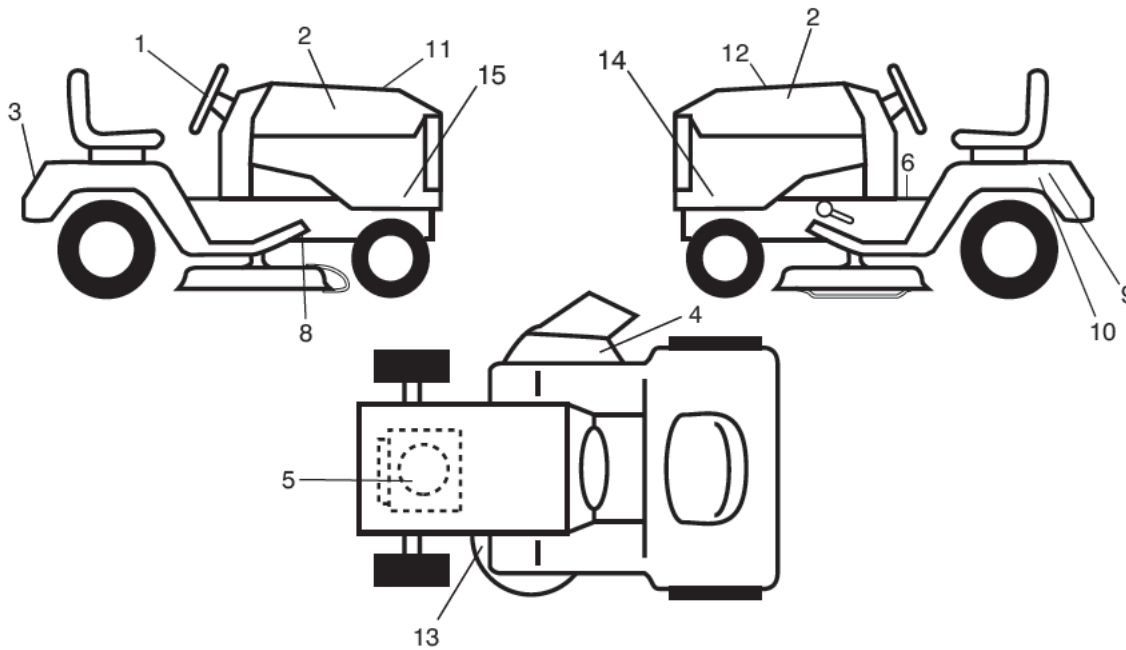
KEY NO.	PART NO.	DESCRIPTION
2	422027	Shaft Asm., Lift
3	195231	Lever Asm., Lift Rh
7	445060X428	Grip, Lever
10	196314	Spring Torsion
87	194209	Pin Cotter 7/16 Bow Tie Lock
88	410710	Spring Lift Assist
89	19191912	Washer Clear Zinc
90	194208	Pin Cotter 5/16 Bow Tie Lock

KEY NO.	PART NO.	DESCRIPTION
91	197984	Link Lift Susp Mower Rear
97	17000612	Screw 3/8-16 x .75
98	581506901	Link Lift Susp. Front Mower
100	73930600	Nut Centerlock 3/8-16 unc
101	581506501	Link Asm. Lift FXD

NOTE: All component dimensions given in U.S. inches
 1 inch = 25.4 mm

TRACTOR - - MODEL NUMBER 917.203830

DECALS



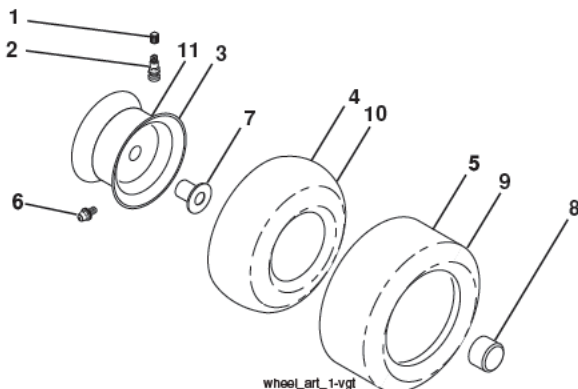
KEY PART NO. NO.

KEY PART NO.	NO.	DESCRIPTION
1	581894601	Decal, Steering
2	585767601	Decal, Hood LH/RH
3	441121	Decal, Fender
4	581579501	Decal, Mower Warning
5	585722401	Decal, Engine HP
6	581578801	Decal, Fender Operator's
7	586207301	Decal, Sideskirt RH
8	421534	Decal, V-Belt Schematic Drive
9	434996	Decal, Battery Dnge/Poi
10	434995	Decal, Battery

KEY PART NO. NO.

KEY PART NO.	NO.	DESCRIPTION
11	584236401	Decal, Replacement
12	585571401	Decal, Customer Maint.
13	581580001	Decal, Mower V-Belt SCH.
14	586207302	Decal, Sideskirt LH
--	193226X428	Pad, Footrest LH
--	193227X428	Pad, Footrest RH
--	581724801	Decal, Bypass
--	586070227	Manual, Operator's (Eng/Span)
--	586070226	Manual, Parts

WHEELS & TIRES

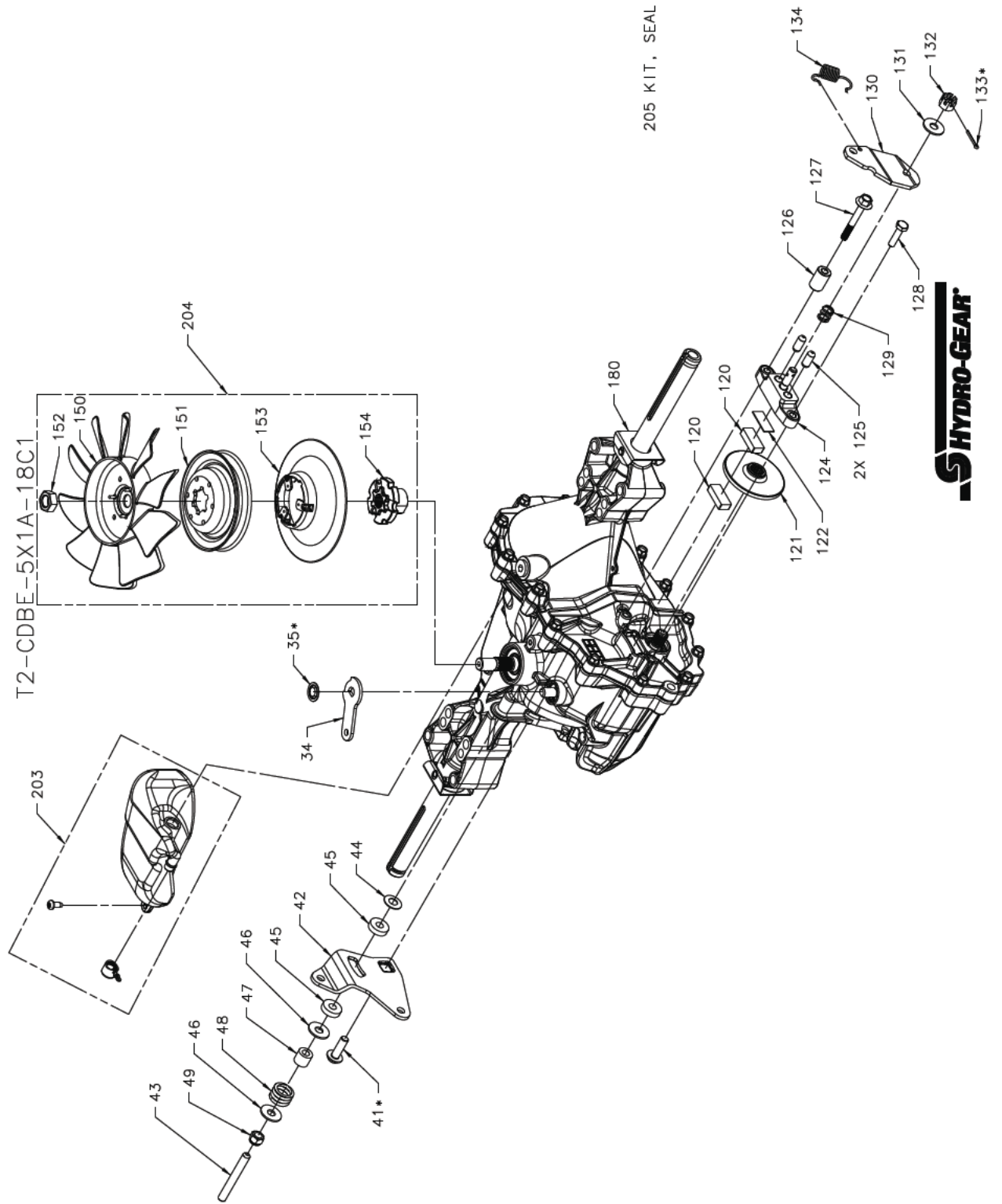


KEY PART NO. NO.

KEY PART NO.	NO.	DESCRIPTION
1	59192	Cap, Valve, Tire
2	65139	Stem, Valve
3	106732X613	Rim Assembly, Front
4	59904	Tube, Front
5	106222X	Tire, Front 15 x 6-6
6	278H	Fitting, Grease
7	9040H	Bearing, Flange
8	104757X428	Cap, Axle
9	138468	Tire, Rear 20 x 8-8
10	7152J	Tube, Rear
11	106108X613	Rim Assembly, Rear
--	144334	Sealant, Tire (10 oz. Tube)

NOTE: All component dimensions given in U.S. inches
1 inch = 25.4 mm

TRACTOR - - MODEL NUMBER 917.203830
 HYDRO GEAR TRANSAXLE - MODEL NUMBER T2-CDBE-5X1A-18C1



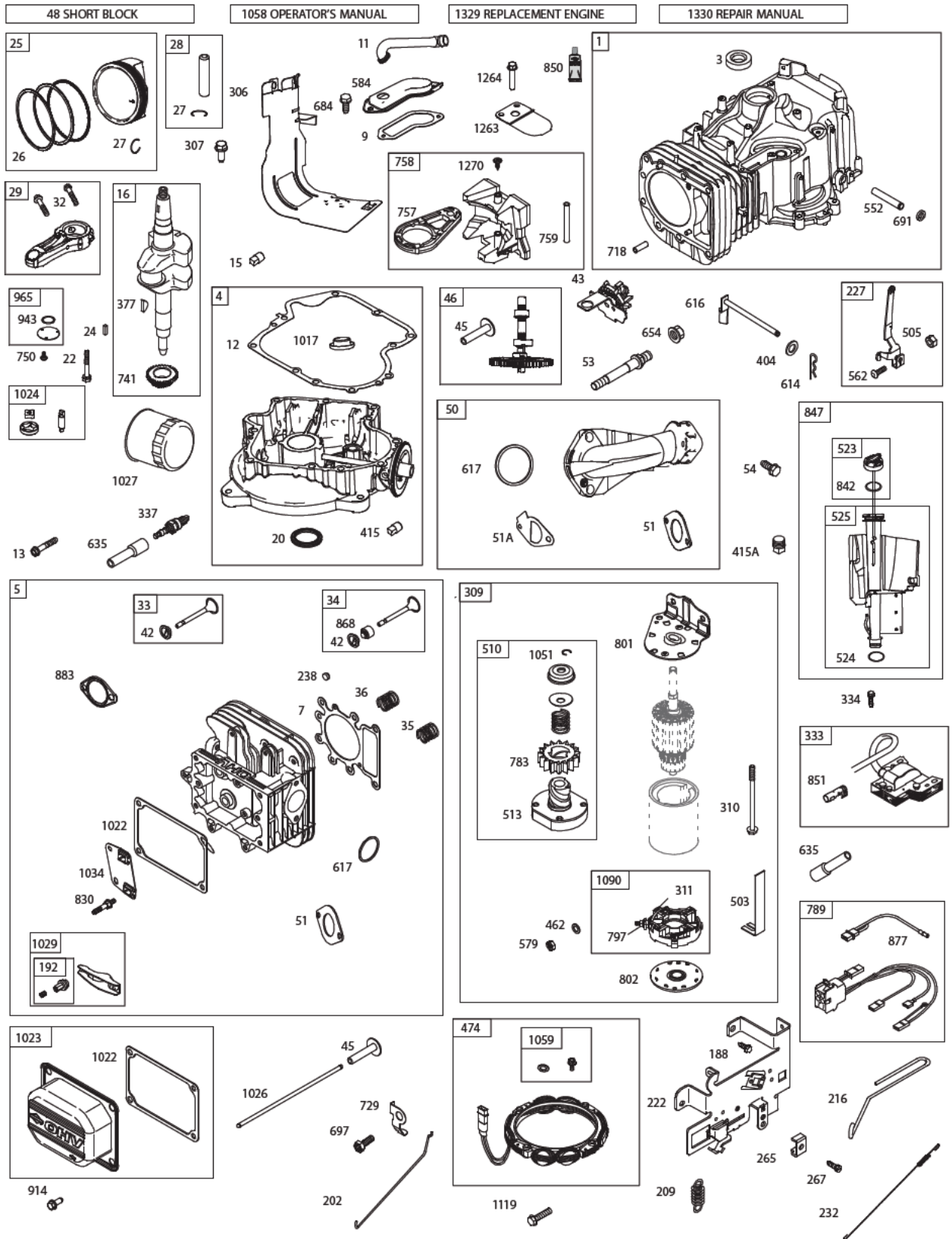
TRACTOR - - MODEL NUMBER 917.203830
HYDRO GEAR TRANSAXLE - MODEL NUMBER T2-CDBE-5X1A-18C1

KEY NO.	PART NO.	DESCRIPTION
34	584280701	Arm Bypass
35	584281001	Ring, Ret .375 Ext
41	584281201	Screw 5/16-18X1
42	584289801	Arm Control
43	584281301	Screw Set 5/16-24X2.50
44	584283301	Washer Belleville
45	584283101	Washer Plastic.32X.80X.21
46	584283001	Washer.34X.88X.06
47	584282801	Spacer .32X.59X.50
48	584282701	Spring Helical Comp
49	584289501	Nut,Hex 5/16-24 Nylon Insert
120	584282601	Puck.Brake
121	584282501	Rotor.Brake
122	584289601	Plate.Puck
124	584289701	Yoke.Brake
125	584287501	Pin.Brake.31X.73 Plated
126	584282401	Spacer.26X.57X.87
127	584281401	Screw 1/4-20X2.0 W/Patch
128	584281501	Screw 1/4-20X1 Patch
129	584282201	Spring, Comp Brake Anti Drag
130	584282301	Arm.Brake
131	584287401	Washer .34X.88X.06
132	584281701	Nut.Castle 5/16-24 Pl
133	584286601	Pin.Cotter 3/32X3/4
134	584281901	Spring Brake Arm Bias
150	584282001	Fan 7", 10 Blade
151	584286101	Pulley 4.0
152	584282101	Nut,Hex Ja 1/2-20 W Patch
153	584287201	Flange Pulley 4.895
154	584287301	Hub Pulley
180	584281601	Spring,Clip Housing Thrust
203	584285201	Kit,E-Tank
204	584285002	Kit,Fan & Pulley
205	584285001	Kit, Seal

NOTE: All component dimensions given in U.S. inches
1 inch = 25.4 mm

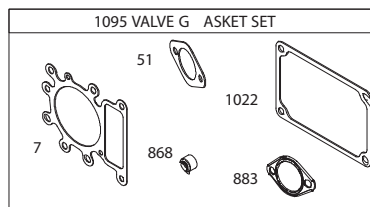
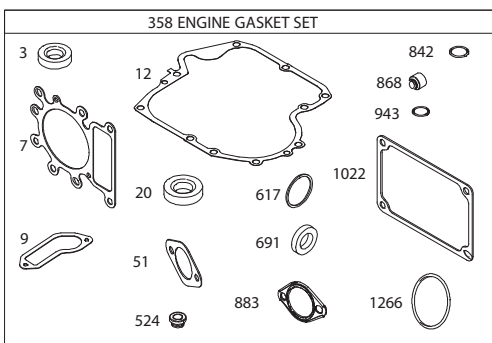
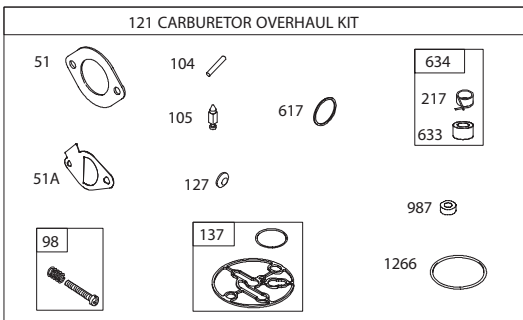
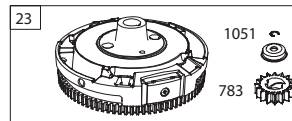
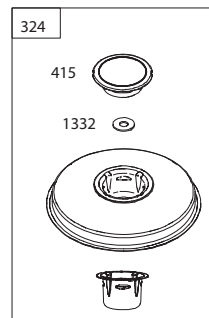
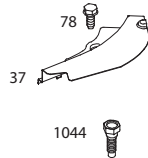
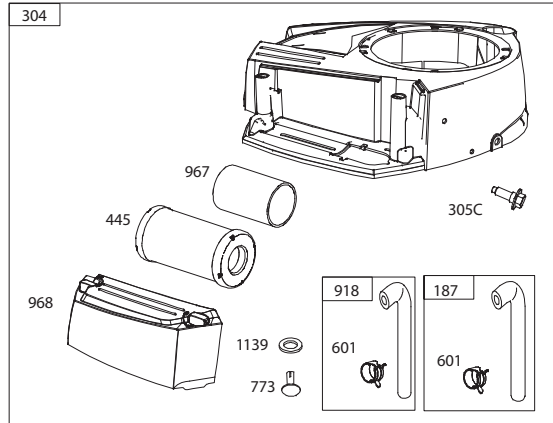
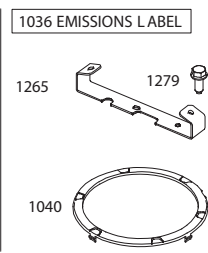
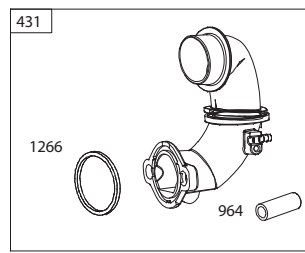
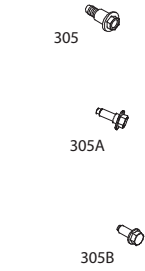
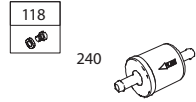
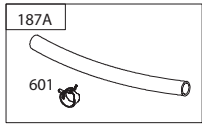
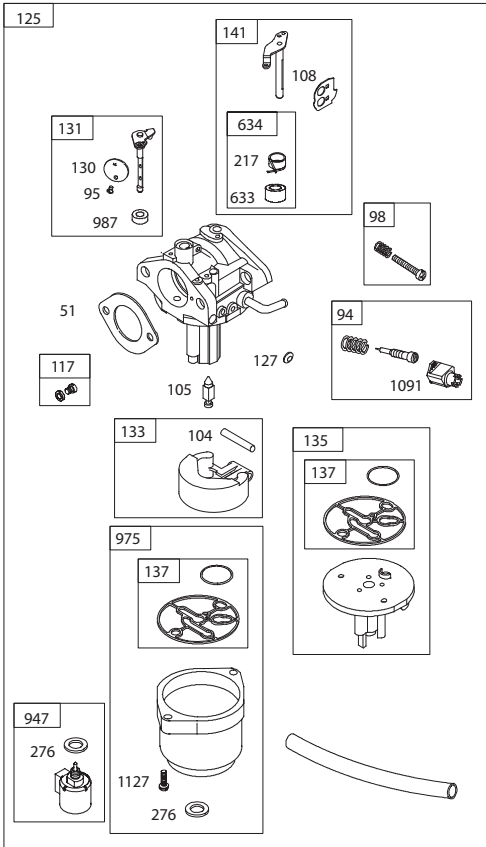
TRACTOR - - MODEL NUMBER 917.203830

BRIGGS & STRATTON ENGINE-MODEL NUMBER 33R877, TYPE NUMBER 0002-G1



TRACTOR - - MODEL NUMBER 917.203830

BRIGGS & STRATTON ENGINE-MODEL NUMBER 33R877, TYPE NUMBER 0002-G1



TRACTOR - - MODEL NUMBER 917.203830

BRIGGS & STRATTON ENGINE-MODEL NUMBER 33R877, TYPE NUMBER 0002-G1

KEY NO.	PART NO.	DESCRIPTION	KEY NO.	PART NO.	DESCRIPTION
1	591465	Cylinder Assembly	141	792777	Kit-Choke Shaft
3	391086s	Seal-Oil (Magneto Side)	187	791805	Line-Fuel (Formed)
4	592849	Sump-Engine	187A	791766	Line-Fuel (Cut to Required Length)
5	591750	Head-Cylinder	188	691693	Screw (Control Bracket)
7	794114	Gasket-Cylinder Head	192	691986	Adjuster-Rocker Arm
9	697109	Gasket-Breather	202	691841	Link-Mechanical Governor
11	794683	Tube-Breather	209	796260	Spring-Governor (Green)
12	697110	Gasket-Crankcase	216	691840	Link-Choke
13	592244	Screw (Cylinder Head)	217	695409	Spring-Choke Return
15	690946	Plug-Oil Drain	222	694042	Bracket-Control
16	591763	Crankshaft	227	691374	Lever-Governor Control
20	795387	Seal-Oil (PTO Side)	232	691842	Spring-Governor Link
22	692125	Screw (Crankcase Cover/Sump)	238	691843	Cap-Valve
23	591759	Flywheel	240	691035	Filter-Fuel
24	591757	Key-Flywheel (Steel)	265	691024	Clamp-Casing
25	95858	Piston Assembly (Standard)	267	794904	Screw (Casing Clamp)
	795877	Piston Assembly (020" Oversize)	276	695410	Washer-Sealing
26	794126	Ring Set (Standard)	304	592814	Housing-Blower
	794127	Ring Set (.020" Oversize)	305	697102	Screw (Blower Housing)
27	698469	Lock-Piston Pin			(1/4-20x1.21)
28	795861	Pin-Piston	305A	793376	Screw (Blower Housing)
29	794571	Rod-Connecting			(1/4-20x.68)
32	791118	Screw (Connecting Rod)	305B	795891	Screw (Blower Housing to Intake Elbow) (#10-16x.43)
33	591752	Valve-Exhaust			
34	591751	Valve-Intake	305C	799370	Screw (Blower Housing)
35	691279	Spring-Valve (Intake)			(1/4-20x.90)
36	691279	Spring-Valve (Exhaust)	306	794953	Shield-Cylinder
37	699882	Guard-Flywheel	307	691693	Screw (Cylinder Shield)
42	499586	Keeper-Valve	309	693551	Motor-Starter
43	691968	Slinger-Governor/Oil	310	690323	Screw (Starter Motor)
45	690564	Tappet-Valve	311	497608	Brush Set
46	793880	Camshaft	324	796309	Screen/Cup Assembly
48	N/A	Short Block	333	799650	Armature-Magneto
		(Not Available at this Printing)	334	691061	Screw (Magneto Armature)
50	592842	Manifold-Intake	337	491055s	Plug-Spark
51	692137	Gasket-Intake	358	796187	Gasket Set-Engine
51A	796081	Gasket-Intake	377	691639	Key-Woodruff
53	591260	Stud (Carburetor)	404	691691	Washer (Governor Crank)
54	691148	Screw (Intake Manifold)	415	794129	Plug (Cover/Retainer)
78	691693	Screw (Flywheel Guard)	415A	794903	Plug (Intake Manifold)
94	793610	Kit-Idle Mixture	431	799043	Elbow-Intake
95	690718	Screw (Throttle Valve)	445	793569	Filter-Air Cleaner Cartridge
98	695408	Kit-Idle Speed	462	691261	Washer (Starter Cable)
104	694918	Pin-Float Hinge	474	592831	Alternator
105	696136	Valve-Float Needle	503	691532	Strap-Starter
108	695419	Valve-Choke	505	691251	Nut (Governor Control Lever)
117	796251	Jet-Main (Standard)	510	693699	Drive-Starter
118	791406	Jet-Main (High Altitude)	513	692024	Clutch-Drive
121	796184	Kit-Carburetor Overhaul	523	699908	Dipstick
125	591736	Carburetor	524	691032	Seal-Dipstick Tube
127	690727	Plug-Welch	525	697184	Tube-Dipstick
130	792747	Valve-Throttle	552	697144	Bushing-Governor Crank
131	792765	Kit-Throttle Shaft	562	691119	Screw (Governor Control Lever)
133	694914	Float-Carburetor	579	691029	Nut (Starter Cable)
135	698780	Tube-Fuel Transfer	584	794682	Cover-Breather Passage
137	698781	Gasket-Float Bowl	601	791850	Hose-Clamp (Green)

TRACTOR - - MODEL NUMBER 917.203830

BRIGGS & STRATTON ENGINE-MODEL NUMBER 33R877, TYPE NUMBER 0002-G1

KEY NO.	PART NO.	DESCRIPTION	KEY NO.	PART NO.	DESCRIPTION
614	691620	Pin-Cotter (Governor Crank)	1044	698139	Screw (Flywheel)
616	692012	Crank-Governor	1051	691265	Ring-Retaining
617	692138	Seal-O Ring (Intake Manifold)(Red)	1058	277675	Operator's Manual
633	699813	Seal-Choke/Throttle (Choke Shaft)	1059	698516	Kit-Screw/Washer (Alternator)
634	698779	Spring/Seal Assembly	1090	691293	Retainer-Brush
635	691909	Boot-Spark Plug	1091	691333	Cap-Limiter
654	690958	Nut (Carburetor)	1095	794152	Gasket Set-Valve
684	697157	Screw (Breather Passage Cover)	1119	691183	Screw (Alternator)
691	692407	Seal-Governor Shaft	1127	695407	Screw (Float Bowl)
697	791680	Screw (Drive Cap)	1139	796449	Washer (Fuel Pump)
718	690959	Pin-Locating	1263	697124	Reed-Breather
729	691224	Clip-Wire	1264	697104	Screw (Breather Reed)
741	697128	Gear-Timing	1265	794151	Support-Blower Housing
750	790832	Screw (Oil Pump Cover)	1266	691917	Seal-O Ring (Intake Elbow) (Red)
757	793242	Link-Counterweight	1270	793243	Plug-AVS Counterweight
758	793763	Counterweight	1279	691108	Screw (Blower Housing Support)
759	697392	Pin-Counterweight	1329	N/A	Replacement Engine (Not Available at this Printing)
773	796448	Retainer (Fuel Pump)			
783	693713	Gear-Pinion	1330	N/A	Repair Manual (Not Available at this Printing)
789	698329	Harness-Wiring			
797	693167	Nut (Brush Retainer)	1332	591991	Washer (Rotating Screen)
801	691283	Cap-Drive			
802	691286	Cap-End			
830	691095	Stud-Rocker Arm			
842	691031	Seal-O Ring (Dipstick)			
847	790442	Dipstick/Tube Assembly			
850	100106	Sealant-Liquid			
851	692424	Terminal-Spark Plug			
868	690968	Seal-Valve			
877	790544	Wire/Connector-Alternator			
883	692236	Gasket-Exhaust			
914	691108	Screw (Rocker Cover)			
918	791744	Hose-Vacuum (Cut to Required Length)			
943	690589	Seal-O Ring (Oil Pump Cover)			
947	699915	Solenoid-Fuel			
964	799159	Cap-Connector			
965	499613	Cover-Oil Pump			
967	793685	Filter-Pre Cleaner			
968	591644	Cover-Air Cleaner			
975	699502	Bowl-Fuel			
987	698777	Seal-Throttle Shaft			
1005	796084	Fan-Flywheel			
1017	796981	Screen-Oil Pump			
1022	272475s	Gasket-Rocker Cover			
1023	797421	Cover-Rocker			
1024	794644	Pump-Oil			
1026	692003	Rod-Push (Intake) (Aluminum)			
	692011	Rod-Push (Exhaust) (Steel)			
1027	795890	Filter-Oil			
1029	691751	Arm-Rocker			
1034	690822	Guide-Push Rod			
1036		Label-Emissions (Available from a Briggs & Stratton Authorized Dealer)			
1040	698368	Plate-Trim			

Carburetor Overhaul Kit	Key No. 121
Engine Gasket Set	Key No. 358
Valve Gasket Set	Key No. 1095

NOTE: All component dimensions given in U.S. inches 1 inch = 25.4 mm