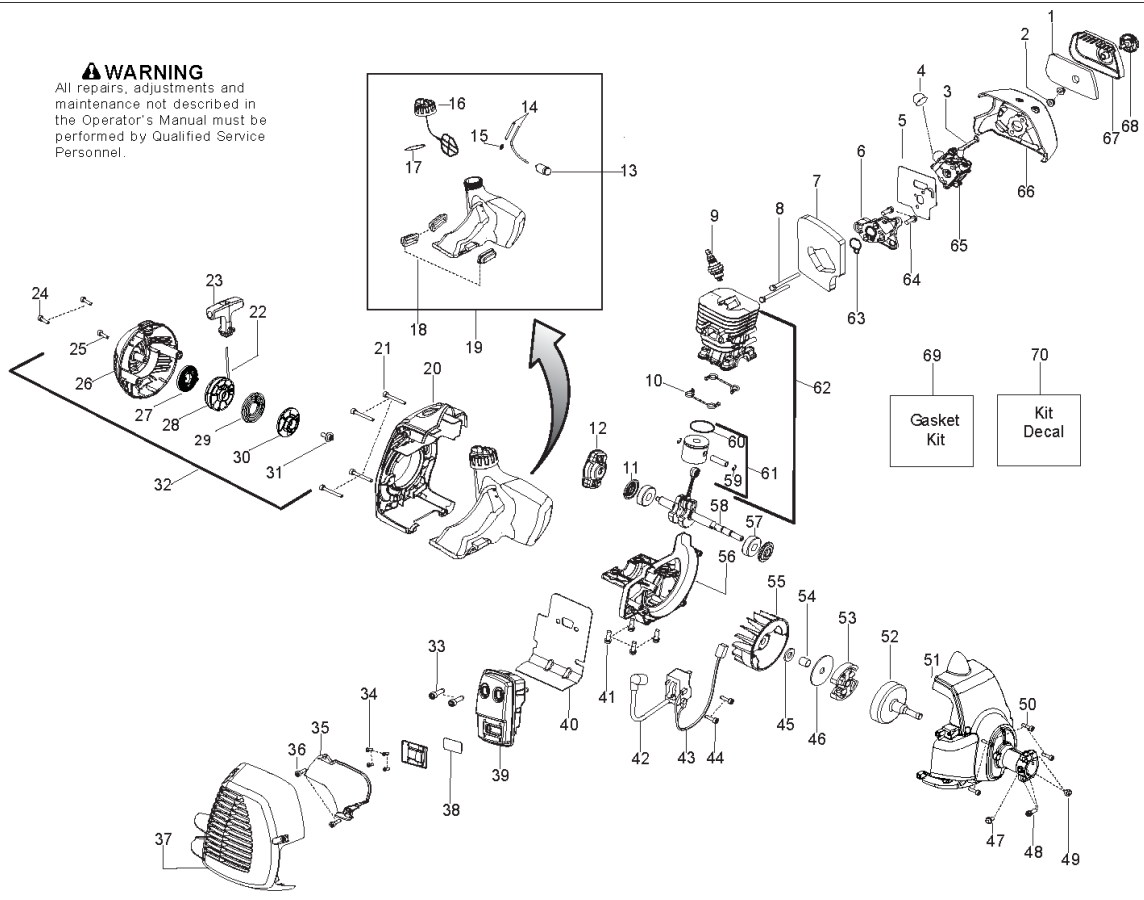




SPARE PARTS LIST

BRUSHCUTTERS/CLEARING SAWS

128 R, 952715752, 2010-08



ENGINE

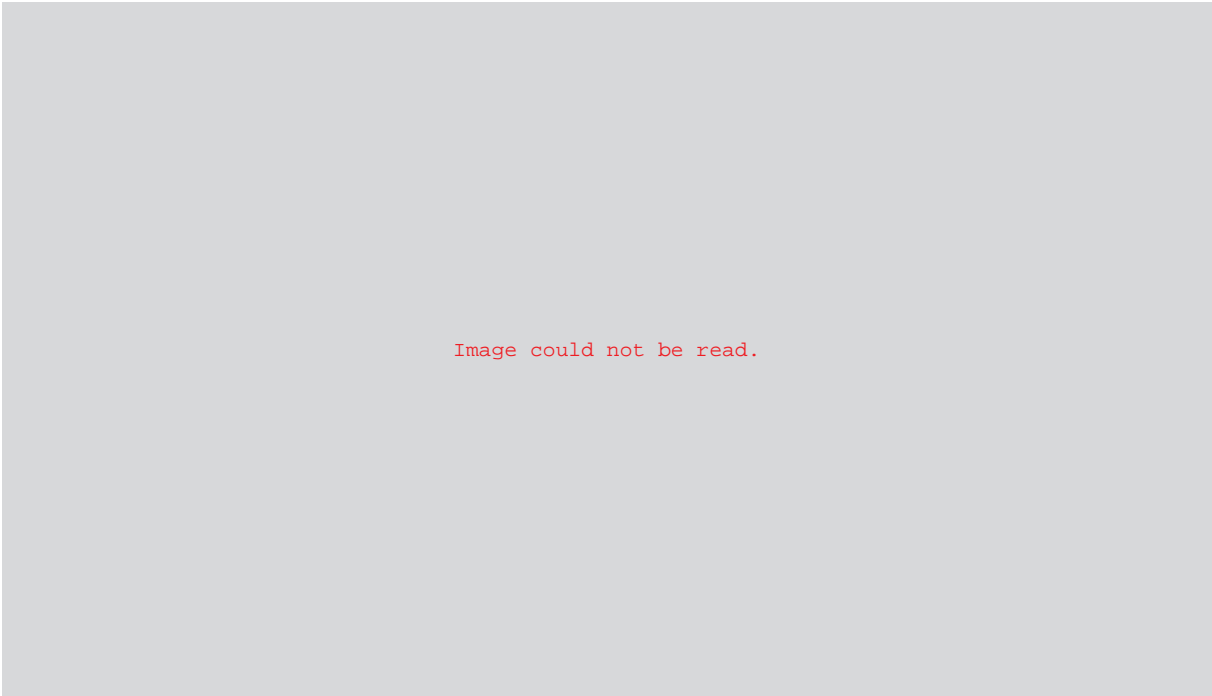
128 R, 952715752, 2010-08

| Спр. № | Код | Описание | Замечание | КОЛ | Наб. |
|--------|--------------|---------------------------|---------------------|-----|--------------|
| 1 | 530 15 02-53 | Фильтр воздушный | | 1 | |
| 2 | 530 01 61-01 | Гайка | | 1 | |
| 3 | 530 05 78-44 | Привод дросселя | CHOKE LEVER | 1 | |
| 4 | 530 05 87-09 | BULB | | 1 | |
| 5 | 545 00 80-86 | Набор прокладок | | 1 | 7,63 |
| 6 | 530 03 55-96 | АДАПТЕР ДЛЯ КАНИС."АСПЕН" | | 1 | |
| 7 | 545 00 80-84 | Набор прокладок | | 1 | 5,69 |
| 8 | 530 01 64-00 | BOLT 0 16X32 | | 1 | |
| 9 | 952 03 02-01 | Свеча зажигания NGKBPMR7A | RCJ-8Y | 1 | |
| 10 | 545 00 80-84 | Набор прокладок | | 1 | 69 |
| 11 | 545 00 80-84 | Набор прокладок | | 1 | 69 |
| 12 | 503 87 33-05 | BRIDGE | | 1 | |
| 13 | 577 16 72-01 | ASSEMBLY | | 1 | |
| 14 | 530 06 95-99 | Шланг | | 1 | 15 |
| 15 | 530 02 38-77 | Штуцер | | 1 | |
| 16 | 530 15 03-50 | Бак | | 1 | 17 |
| 17 | 545 00 80-84 | Набор прокладок | | 1 | |
| 18 | 530 05 97-80 | ISOLATOR P465 P495 | | 1 | |
| 19 | 545 18 08-70 | KIT-FUEL TANK ASSY. | | 1 | 14,15,16,17 |
| 20 | 576 15 32-01 | SHROUD | | 1 | |
| 21 | 530 01 64-48 | SCREW | | 1 | |
| 22 | 545 00 80-79 | KIT-ROPE | | 1 | |
| 23 | 545 04 32-04 | Ручка стартера | | 1 | |
| 24 | 530 01 64-26 | SCREW | | 1 | |
| 25 | 530 01 64-49 | SCREW | | 1 | |
| 26 | 525 45 55-01 | Корпус пружины | | 1 | |
| 27 | 545 00 80-87 | Пружина | | 1 | |
| 28 | 585 53 03-01 | Бак для воды | | 1 | |
| 29 | 578 46 51-01 | Пружина | | 1 | |
| 30 | 579 36 62-01 | Шкив | | 1 | |
| 31 | 530 01 64-68 | SCREW | | 1 | |
| 32 | 579 06 31-01 | Крышка стартера 2095 | | 1 | 22,23,25,31 |
| 33 | 530 05 89-82 | BOLT 0 16X32 | | 1 | |
| 34 | 530 01 52-41 | SCREW | | 1 | |
| 35 | 530 15 04-40 | PROTECTION | HEAT SHIELD | 1 | |
| 36 | 530 01 64-49 | SCREW | | 1 | |
| 37 | 576 21 50-01 | Бак для воды | | 1 | Incl. screws |
| 38 | 545 03 05-01 | Сетка глушителя | | 1 | 34 |
| 39 | 574 03 14-02 | Бак для воды | | 1 | 33,34,38,40 |
| 40 | 545 00 80-84 | Набор прокладок | | 1 | 39,69 |
| 41 | 530 01 58-97 | SCREW | | 1 | |
| 42 | 545 04 67-01 | IGNITION MODULE | | 1 | |
| 43 | 530 03 92-27 | SHORTING LEAD | | 1 | |
| 44 | 530 01 64-56 | SCREW | | 1 | |
| 45 | 530 01 64-63 | Шайба | | 1 | |
| 46 | 530 09 41-89 | Шайба | | 1 | |
| 47 | 530 01 58-05 | SCREW | | 1 | |
| 48 | 530 01 57-74 | SCREW | | 1 | |
| 49 | 530 01 57-68 | Гайка | | 1 | |
| 50 | 530 01 64-56 | SCREW | | 1 | |
| 51 | 545 20 52-01 | HOUSING | | 1 | |
| 52 | 580 44 66-01 | Бак для воды | | 1 | |
| 53 | 530 05 51-22 | Сцепление | | 1 | |
| 54 | 530 05 78-52 | Резиновое кольцо | | 1 | |
| 55 | 530 03 92-42 | Крыльчатка | | 1 | |
| 56 | 577 92 95-02 | Картер K950Ring | | 1 | |
| 57 | 545 01 34-01 | Игольчатый подшипник | | 1 | |
| 58 | 545 19 52-02 | ASSY-CRANKSHAFT | | 1 | |
| 59 | 530 01 51-62 | Шайба | PISTON PIN RETAINER | 1 | |
| 60 | 575 22 79-01 | Резиновое кольцо | | 1 | |

ENGINE

128 R, 952715752, 2010-08

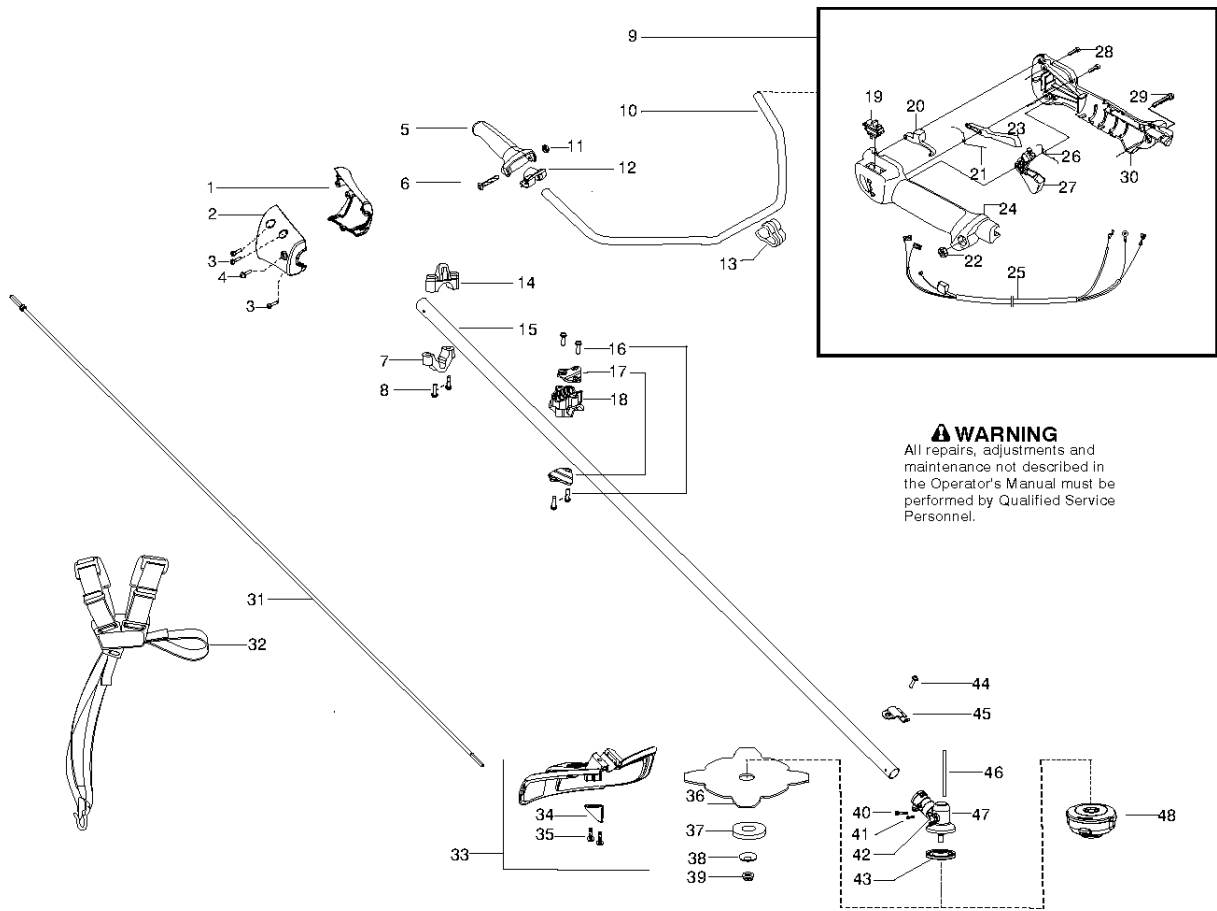
| Спр. № | Код | Описание | Замечание | КОЛ | Наб. |
|--------|--------------|------------------------|-------------------|-----|----------------------------|
| 61 | 545 08 18-14 | Бак для воды | PISTON | 1 | 59,60 |
| 62 | 545 00 80-83 | KIT-PISTON/CYL. | PISTON & CYLINDER | 1 | 61 |
| 63 | 545 00 80-84 | Набор прокладок | | 1 | 5,69 |
| 64 | 530 01 58-97 | SCREW | | 1 | |
| 65 | 545 08 18-48 | KIT - CARBURETOR | | 1 | 3, 4, 5 |
| 66 | 576 45 90-01 | BASE | | 1 | |
| 67 | 530 05 78-46 | КРЫШКА | | 1 | |
| 68 | 530 05 97-96 | KNOB ASSY AIRBOX COVER | | 1 | |
| 69 | 545 00 80-84 | Набор прокладок | | 1 | 5,7,10,1 1,17,40, 63 |
| 70 | 545 00 33-52 | Бак для воды | DECAL | 1 | |



SERVICE REFERENCE

128 R, 952715752, 2010-08

| Спр. № | Код | Описание | Замечание | КОЛ Наб. |
|--------|--------------|----------------------|--|----------|
| 1 | 545 17 34-01 | Игольчатый подшипник | | 1 |
| 2 | 530 01 64-20 | WASHER - THRUST | | 1 |
| 3 | 530 15 00-39 | Барабан сцепления | S/N 2012-090N AND LOWER | 1 |
| 3 | 580 44 66-01 | Бак для воды | CLUTCH DRUM - S/N 2012-091N AND HIGHER | 1 |



| Спр. № | Код | Описание | Замечание | КОЛ | Наб. |
|--------|--------------|--------------------------|---|-----|--------------------|
| 1 | 574 81 07-01 | CONE | 2010-72N AND LOWER, SEE SERVICE REFERENCE | 1 | |
| 2 | 574 81 03-01 | CONE | 2010-72N AND LOWER, SEE SERVICE REFERENCE | 1 | |
| 3 | 530 01 64-49 | SCREW | 2010-72N AND LOWER, SEE SERVICE REFERENCE | 1 | |
| 4 | 530 01 58-05 | SCREW | 2010-72N AND LOWER, SEE SERVICE REFERENCE | 1 | |
| 5 | 537 17 28-02 | Передняя ручка 371K | | 1 | |
| 6 | 503 20 02-45 | SCREW IHSCFM | | 1 | |
| 7 | 545 05 66-01 | Пластина | | 1 | |
| 8 | 530 01 59-40 | SCREW | | 1 | |
| 9 | 545 12 55-01 | THROTTLE KIT | | 1 | 19-30 |
| 10 | 502 19 95-03 | Рукоятка | | 1 | |
| 11 | 731 23 14-01 | HEXAGON NUT | | 1 | |
| 12 | 537 17 29-01 | КРЫШКА | | 1 | |
| 13 | 502 21 12-01 | Кронштейн 250PS | | 1 | |
| 14 | 545 11 33-01 | Пластина | | 1 | |
| 15 | 575 77 60-01 | Бак для воды | | 1 | 40,41,42 ,45,47 |
| 16 | 530 01 58-14 | SCREW | | 1 | |
| 17 | 530 05 85-63 | Кронштейн | | 1 | |
| 18 | 545 05 85-01 | Кронштейн | | 1 | |
| 19 | 537 41 90-01 | MICRO SWITCH | | 1 | |
| 20 | 537 16 07-03 | STARTER THROTTLE LOC | | 1 | |
| 21 | 537 17 43-01 | Пружина | | 1 | |
| 22 | 503 22 10-13 | HEXAGON NUT | | 1 | |
| 23 | 506 49 51-01 | Предохранитель монетки | | 1 | |
| 24 | 537 16 02-03 | Рукоятка | | 1 | |
| 25 | 545 12 58-01 | ASSEMBLY | | 1 | |
| 26 | 537 17 42-01 | SPRING THROTTLE TRIG | | 1 | |
| 27 | 506 49 50-01 | THROTTLE CONTROL | | 1 | |
| 28 | 503 21 66-18 | SCREW IHSCF | | 1 | |
| 29 | 503 20 07-35 | SCREW IHSCFM | | 1 | |
| 30 | 537 16 03-01 | Рукоятка | | 1 | |
| 31 | 545 00 75-07 | Тяга | | 1 | |
| 32 | 537 21 63-01 | ПОДВЕСКА КУСТОРЕЗА R | | 1 | |
| 33 | 545 03 09-01 | COMBI GUARD | | 1 | 34, 35, 44 |
| 34 | 530 05 22-86 | LINE | | 1 | |
| 35 | 530 01 58-14 | SCREW | | 1 | |
| 36 | 504 00 13-03 | ДИСК ДЛЯ ТРАВЫ ГРАСС-255 | | 1 | |
| 37 | 503 89 01-01 | Чашка ограничительная | | 1 | |
| 38 | 537 28 56-01 | Кольцо-проставка | | 1 | |
| 39 | 503 85 63-01 | Гайка | | 1 | |
| 40 | 530 01 60-14 | SCREW | | 1 | |
| 41 | 545 00 39-02 | SCREW | | 1 | |
| 42 | 575 72 46-01 | Заглушка | | 1 | |
| 43 | 537 23 49-01 | CARRIER | | 1 | |
| 44 | 530 01 57-71 | SCREW | | 1 | |
| 45 | 530 05 75-54 | Кронштейн | | 1 | |
| 46 | 502 28 59-01 | HOUSING | | 1 | |
| 47 | 530 09 62-95 | REPL BY 502 19 18-01 | | 1 | |
| 48 | 537 33 83-06 | TRIMMER HEAD | | 1 | |