



Illustrated Parts List

Pro Max 7500EA



Model

Mfg. No.	Description
030404-0	ProMax 7500EA CE
030405-0	ProMax 7500EA UK
030406-0	ProMax 7500EA AU

Manual Part No. 103982GS

Revision D

Rev. Date: 7/20/2011

Not for
Reproduction

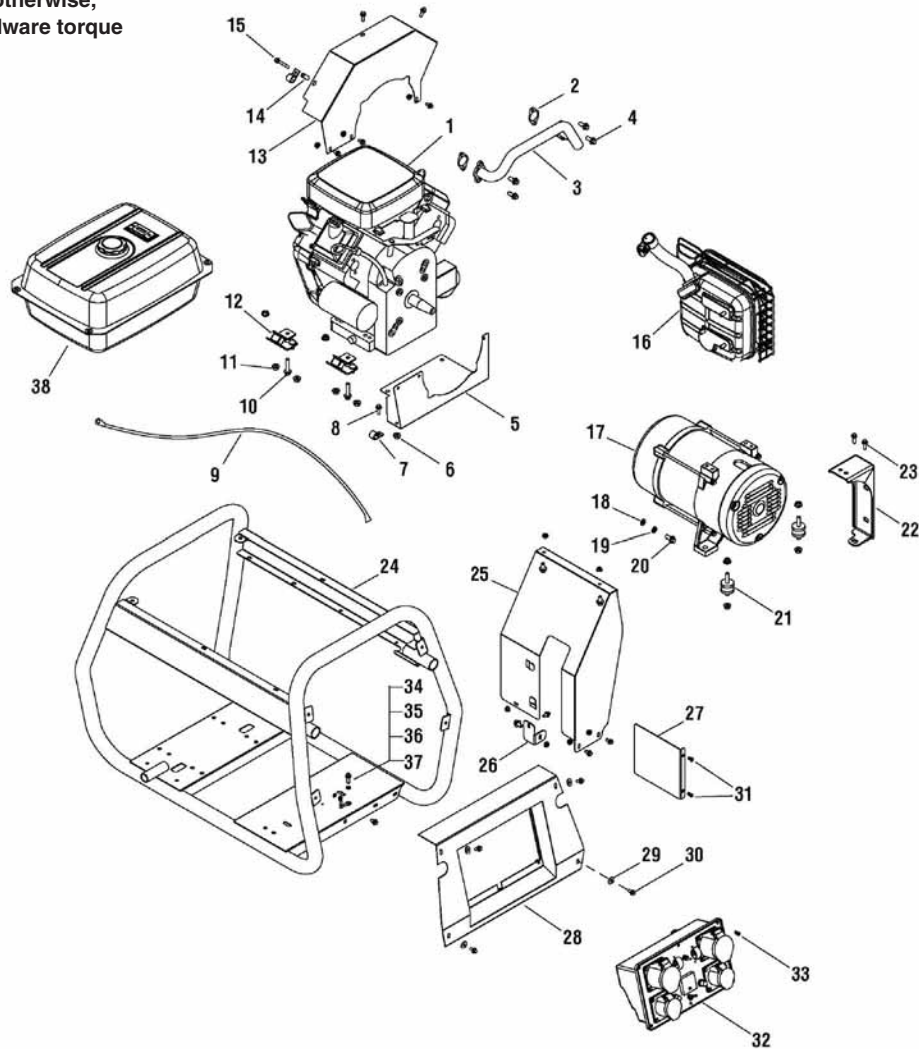
PRODUCT COMPONENTS	PAGES
Main Unit	4
Alternator	6
Cradle	7
Fuel Tank	8
Exhaust and Fittings	9
Battery & Tray	10
Control Panel - AU	11
Control Panel - CE	12
Control Panel - UK	13
Decals	14
Torque Specification Chart	Inside Back Cover

Not for
Reproduction

Main Unit

0001

NOTE: Unless noted otherwise, use the standard hardware torque specification chart.



REF. PART NO.	DESCRIPTION	REF. PART NO.	DESCRIPTION
1	295447-0144-G1 ** ENGINE, 14HP, 50hz, VanGuard (Engine Model: 295447-0144-G1)	17	103788GS ALTERNATOR ASSEMBLY, 6kw
2	691613 GASKET, Muffler (Engine Side)	18	----- * WASHER, 10mm
3	692061 MANIFOLD, Exhaust Assembly	19	----- * WASHER, Spring, 10mm
4	691902 SCREW	20	----- * BOLT, Hex, 3/8-35 (16unc)
5	103716GS DUCTING PANEL, Lower	21	103714GS MOUNT, Vibration, Engine
6	----- * NUT, Hex, M6	22	103776GS BRACKET, Muffler
7	103948GS CLIP	23	----- * BOLT, Hex, M8 x 20mm
8	----- BOLT, Hex, Class B, M6 x 12mm	24	103712GS CRADLE, PM9000/7500
9	103949GS CABLE, Low Oil Shut Down	25	103717GS HEAT SHIELD, Muffler
10	----- * BOLT, Hex, Class B, M8 x 35mm	26	103778GS BRACKET, Heat Shield
11	----- * NUT	27	103777GS PLATE, Heat Shield
12	103713GS MOUNT, Vibration, Engine	28	103720GS SUPPORTING PANEL
13	103715GS DUCTING PANEL, Upper	29	----- * WASHER, 6mm
14	103950GS SPACER, ?6x25mm	30	----- * BOLT, Hex, M6 x 12mm
15	----- * BOLT, Hex, M6 x 35mm	31	----- * SCREW, 5.5 x 13mm
16	103593GS KIT, Muffler		

Footnotes

* - Items without part numbers are common fasteners and are available at local hardware stores.

** Contact Engine manufacturer for parts and service

The above parts group applies to the following Mfg. Nos.:

030404-0 - ProMax 7500EA CE

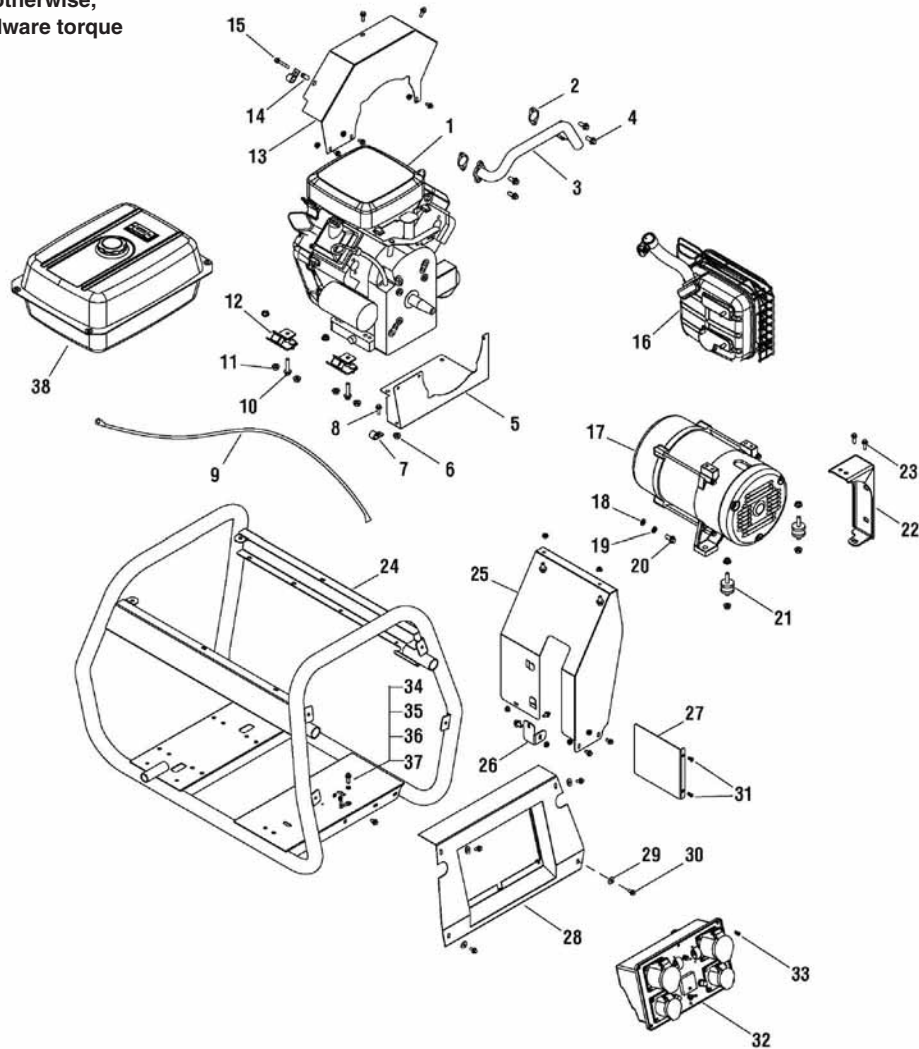
030406-0 - ProMax 7500EA AU

030405-0 - ProMax 7500EA UK

Main Unit

0001

NOTE: Unless noted otherwise, use the standard hardware torque specification chart.



REF.	PART NO.	DESCRIPTION	REF.	PART NO.	DESCRIPTION
32	103880GS	CONTROL PANEL (AU)			
32	103845GS	CONTROL PANEL (CE)			
32	103799GS	CONTROL PANEL (UK)			
33	----	* SCREW, M6 x 16mm			
34	----	* SCREW, Hex, St, 5.5 x 20mm			
35	----	* WASHER, 6mm			
36	----	* WASHER, 5mm			
37	103665GS	WIRE, Ground			
38	103770GS	TANK, Fuel, 16L, Black			

Footnotes

* - Items without part numbers are common fasteners and are available at local hardware stores.

** Contact Engine manufacturer for parts and service

The above parts group applies to the following Mfg. Nos.:

030404-0 - ProMax 7500EA CE

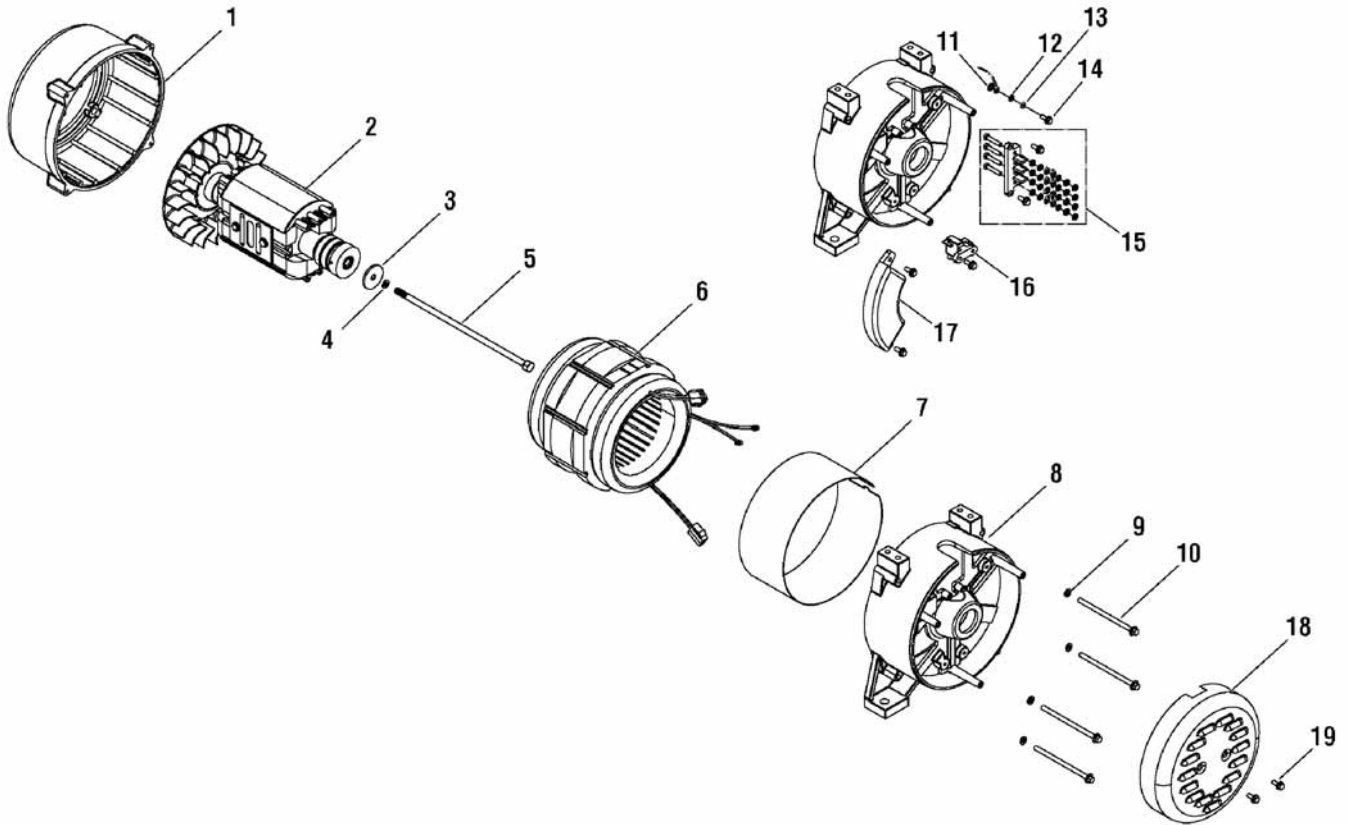
030406-0 - ProMax 7500EA AU

030405-0 - ProMax 7500EA UK

Alternator

0003

NOTE: Unless noted otherwise, use the standard hardware torque specification chart.



REF. PART NO.	DESCRIPTION	REF. PART NO.	DESCRIPTION
1	103789GS CASTING, Front	18	103846GS REAR COVER
2	103840GS ROTOR ASSEMBLY, 6.0kW	19	----- * BOLT, Hex, Class B, M5 x 13
3	----- * WASHER, 10mm		
4	----- * WASHER, Spring, 10mm		
5	103851GS BOLT, Flange, 5/16-24 x 250mm UNC		
6	103842GS STATOR ASSEMBLY, 6.0kW		
7	103862GS ALTERNATOR BAND		
8	103790GS CASTING, Rear		
9	----- * WASHER, Spring, 6mm		
10	103863GS BOLT, Hex, M6 x 190mm		
11	----- * WASHER, 5mm		
12	----- * WASHER, 5mm		
13	----- * WASHER, Spring, 5mm		
14	----- * BOLT, 5*12mm		
15	103649GS TERMINAL BLOCK ASSEMBLY		
16	103848GS CARBON BRUSH ASSEMBLY		
17	103847GS AVR, 6KW-7KW		

Footnotes

* Items without part numbers are common fasteners and are available at local hardware stores.

The above parts group applies to the following Mfg. Nos.:

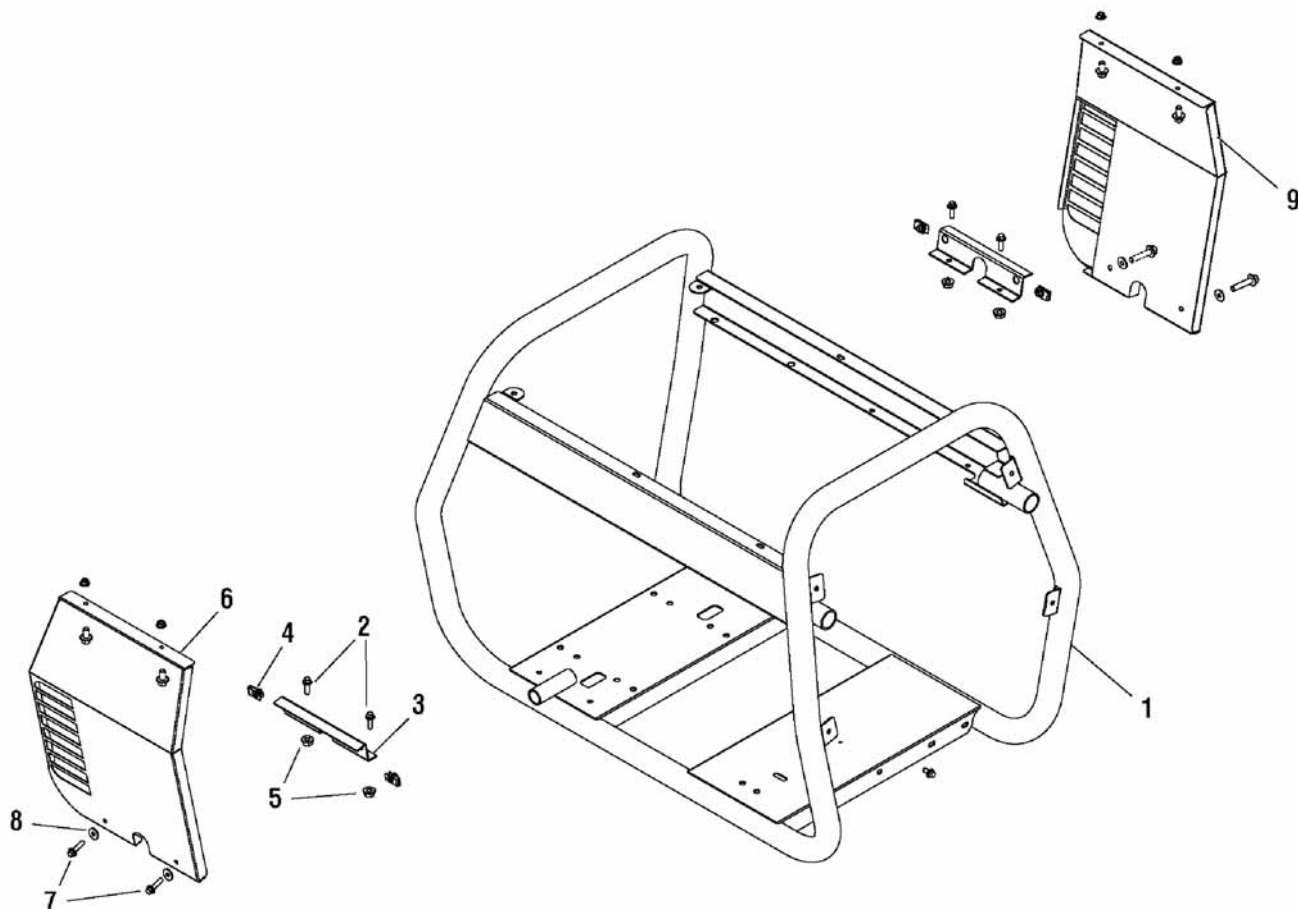
030404-0 - ProMax 7500EA CE
 030405-0 - ProMax 7500EA UK

030406-0 - ProMax 7500EA AU

Cradle

0005

NOTE: Unless noted otherwise, use the standard hardware torque specification chart.



REF. PART NO.	DESCRIPTION	REF. PART NO.	DESCRIPTION
1	103712GS CRADLE, PM9000/7500, Electric Start, r11006		
2	-- * BOLT, M6 x 12mm		
3	103784GS BRACKET, Acoustic Side Panel		
4	-- * NUT, U-Shaped		
5	-- * NUT, M6		
6	103951GS PANEL, Acoustic, Side 1+ foam		
7	-- * BOLT, Hex, M6 x 35mm		
8	-- * WASHER, 6mm		
9	103952GS PANEL, Acoustic, Side 1+ foam		

Footnotes

* Items without part numbers are common fasteners and are available at local hardware stores.

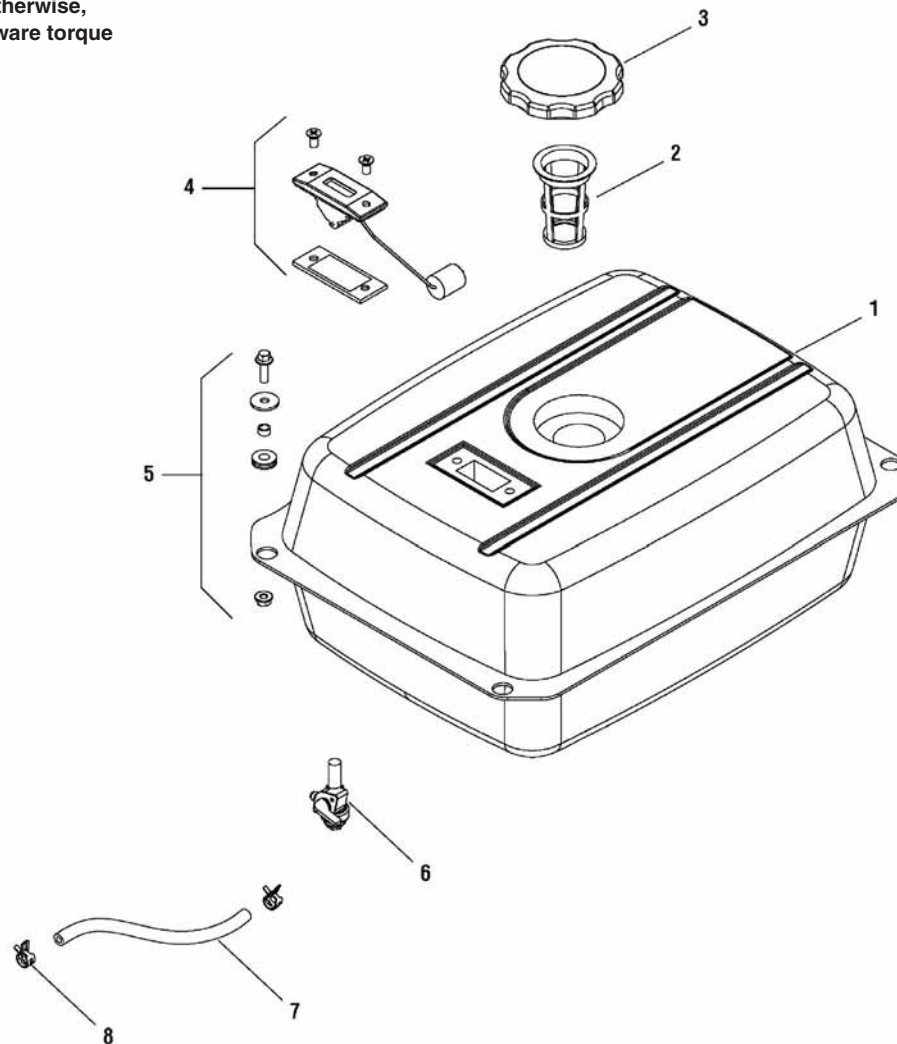
The above parts group applies to the following Mfg. Nos.:

030404-0 - ProMax 7500EA CE
030405-0 - ProMax 7500EA UK

Fuel Tank

NOTE: Unless noted otherwise, use the standard hardware torque specification chart.

0004



REF. PART NO.	DESCRIPTION	REF. PART NO.	DESCRIPTION
1	103770GS TANK, Fuel, 16L, Black		
2	104911GS FILTER CUP		
3	103632GS CAP, Fuel Tank		
4	103655GS FUEL GAUGE ASSEMBLY		
5	103656GS MOUNTING KIT		
6	103679GS CONNECTOR, Fuel Tank		
7	----- FUEL PIPE, 6.5mm x 400mm		
8	103772GS CLAMP, Fuel Pipe		

Footnotes

The above parts group applies to the following Mfg. Nos.:

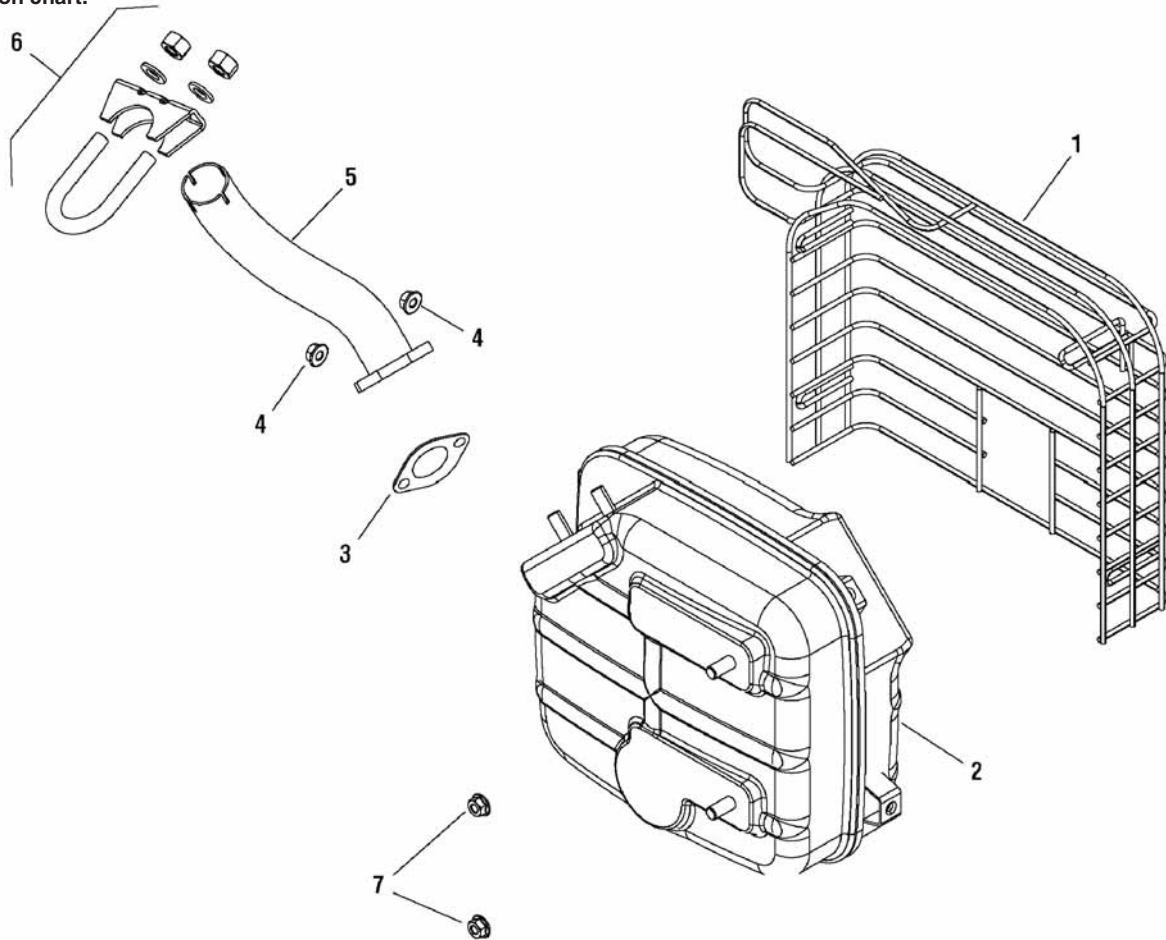
030404-0 - ProMax 7500EA CE
030405-0 - ProMax 7500EA UK

030406-0 - ProMax 7500EA AU

Exhaust and Fittings

0008

NOTE: Unless noted otherwise, use the standard hardware torque specification chart.



REF.	PART NO.	DESCRIPTION	REF.	PART NO.	DESCRIPTION
1	103302GS	GUARD, Muffler			
2	103303GS	MUFFLER BODY, QGS			
3	710250	GASKET, Muffler			
4	710090	NUT, Flange, M8			
5	103591GS	MANIFOLD, Exhaust, QGS			
6	103592GS	MUFFLER CLAMP ASSEMBLY			
7	----	* NUT, M8			

Footnotes

* Items without part numbers are common fasteners and are available at local hardware stores.

The above parts group applies to the following Mfg. Nos.:

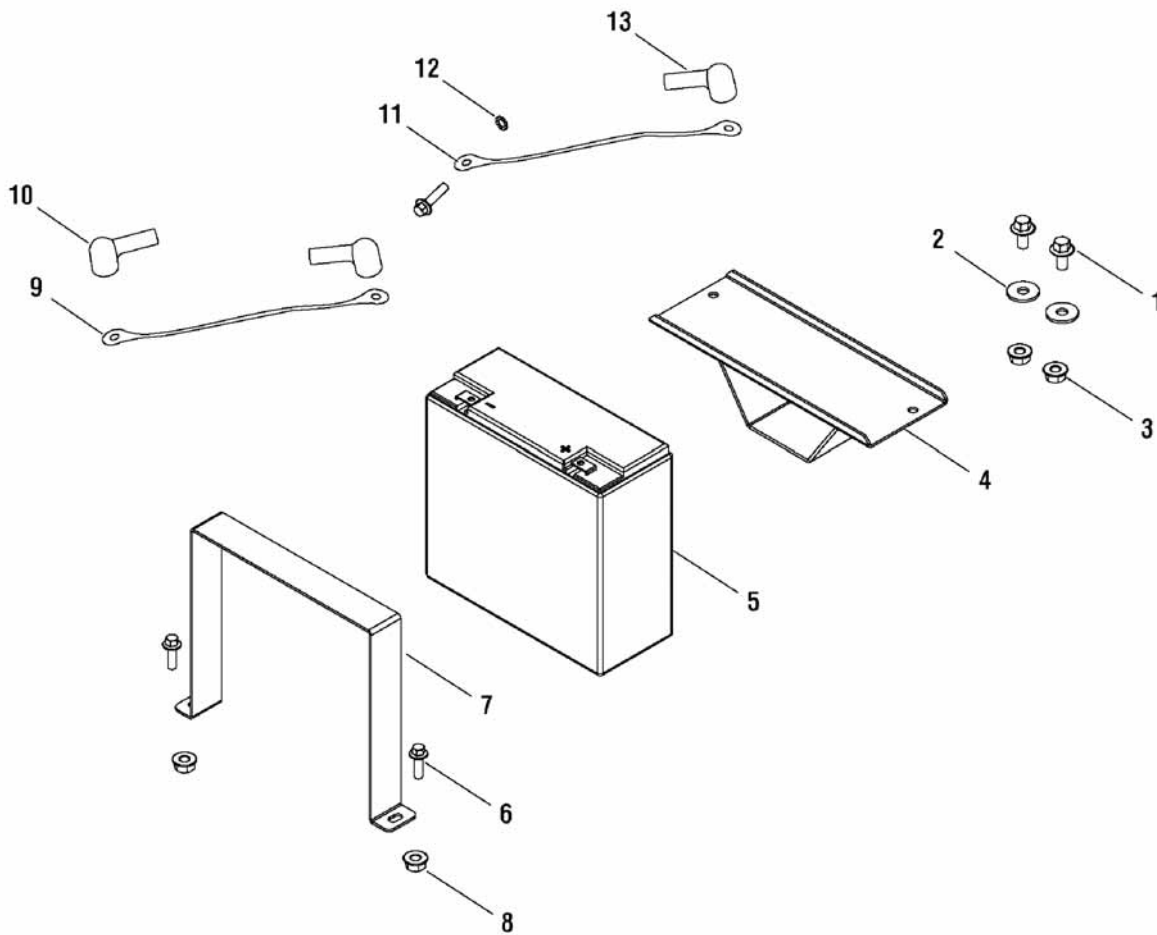
030404-0 - ProMax 7500EA CE
030405-0 - ProMax 7500EA UK

030406-0 - ProMax 7500EA AU

Battery & Tray

0007

NOTE: Unless noted otherwise,
use the standard hardware torque
specification chart.



REF.	PART NO.	DESCRIPTION	REF.	PART NO.	DESCRIPTION
1	----	* BOLT, Hex, M8 x 12mm			
2	----	* WASHER, 8mm			
3	----	* NUT, M8			
4	103756GS	TRAY, Battery			
5	103774GS	BATTERY, 18AH, Gaston			
6	----	* BOLT, Hex, M6 x 20mm			
7	103757GS	STRAP, Battery			
8	----	* NUT, M6			
9	103739GS	CABLE, Battery, Black, 300mm			
10	103737GS	INSULATION CAP, Black			
11	103740GS	CABLE, Battery, Red, 500mm			
12	----	* WASHER			
13	103738GS	INSULATION CAP, Red			

Footnotes

* Items without part numbers are common fasteners and are available at local hardware stores.

The above parts group applies to the following Mfg. Nos.:

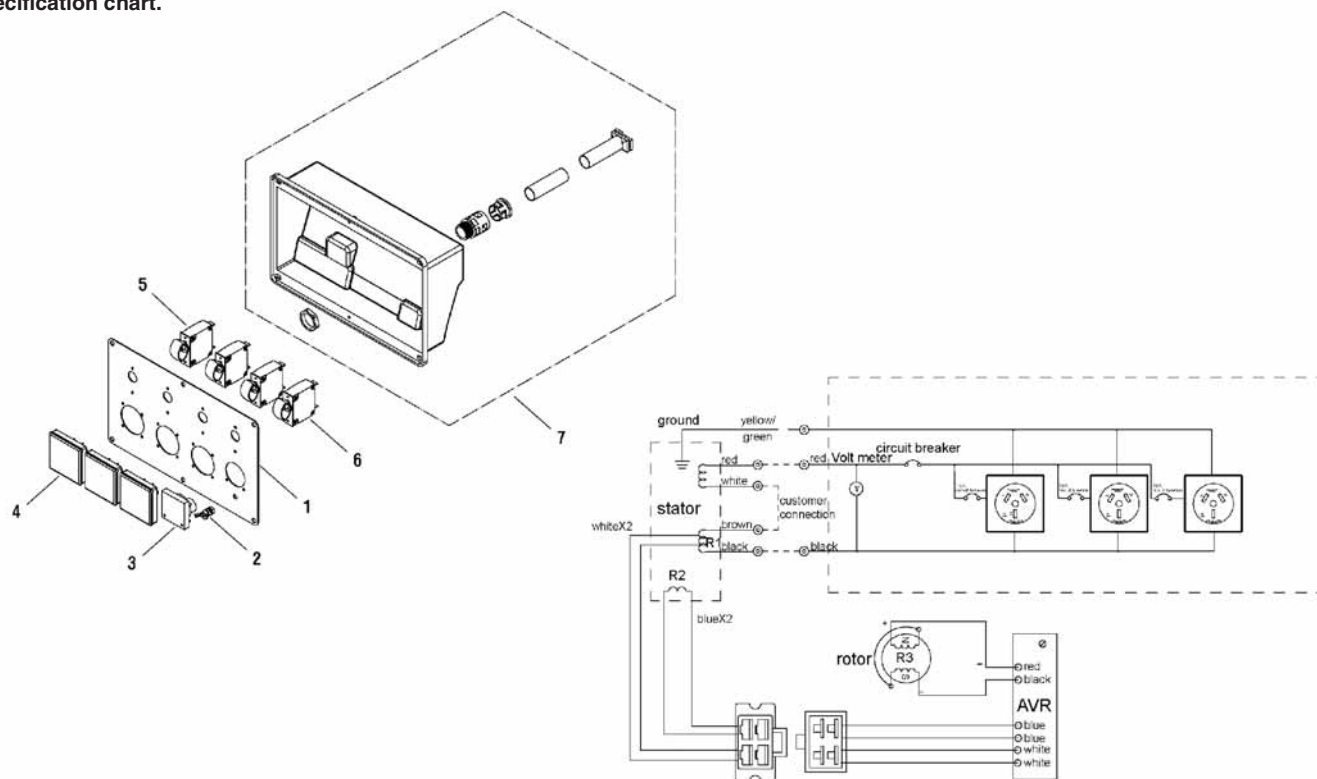
030404-0 - ProMax 7500EA CE
030405-0 - ProMax 7500EA UK

030406-0 - ProMax 7500EA AU

Control Panel - AU

0002

NOTE: Unless noted otherwise, use the standard hardware torque specification chart.



Ref	Wire Colour	Winding	Resistance @ 20C
R1	Red - Black	Stator Power	0.43Ω±10%
R2	Blue - Blue	Stator Excitation	1.25Ω±10%
R3	NA	Rotor Field	39.5Ω±10%

REF. PART NO.	DESCRIPTION	REF. PART NO.	DESCRIPTION
1	103943GS PLATE, Control Panel		
2	----- KIT, Grounding		
3	103919GS VOLTMETER		
4	103879GS SOCKET, Blue (AU)		
5	103944GS CIRCUIT BREAKER/SWITCH, 1P/15A		
6	103953GS CIRCUIT BREAKER/SWITCH, 1P/15A		
7	103909GS ASSEMBLY, Control Panel, Back Cover		

Footnotes

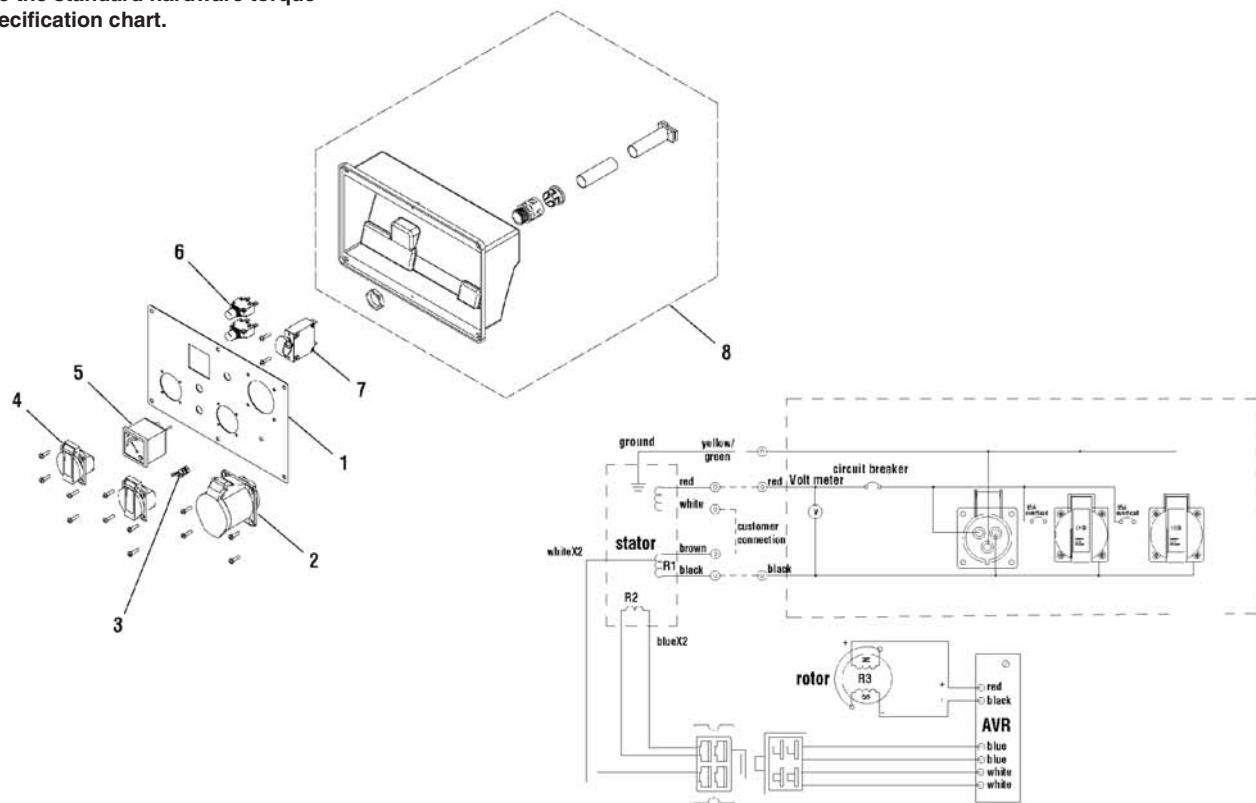
The above parts group applies to the following Mfg. Nos.:

030406-0 - ProMax 7500EA AU

Control Panel - CE

0002

NOTE: Unless noted otherwise, use the standard hardware torque specification chart.



Ref	Wire Colour	Winding	Resistance @ 20C
R1	Red - Black	Stator power	0.43 Ω ± 10%
R2	Blue - Blue	Stator field	1.25 Ω ± 10%
R3	N/A	Rotor	39.5 Ω ± 10%

REF.	PART NO.	DESCRIPTION	REF.	PART NO.	DESCRIPTION
1	103911GS	PLATE, Control Panel			
2	103913GS	SOCKET, CEE 32A/230V			
3	----	KIT, Grounding			
4	103855GS	SOCKET SCHUKO, 16A, Blue, Shuttered			
5	103672GS	VOLTMETER			
6	103914GS	BREAKER, 15A			
7	103953GS	CIRCUIT BREAKER/SWITCH, 1P/15A			
8	103909GS	ASSEMBLY, Control Panel, Back Cover			

Footnotes

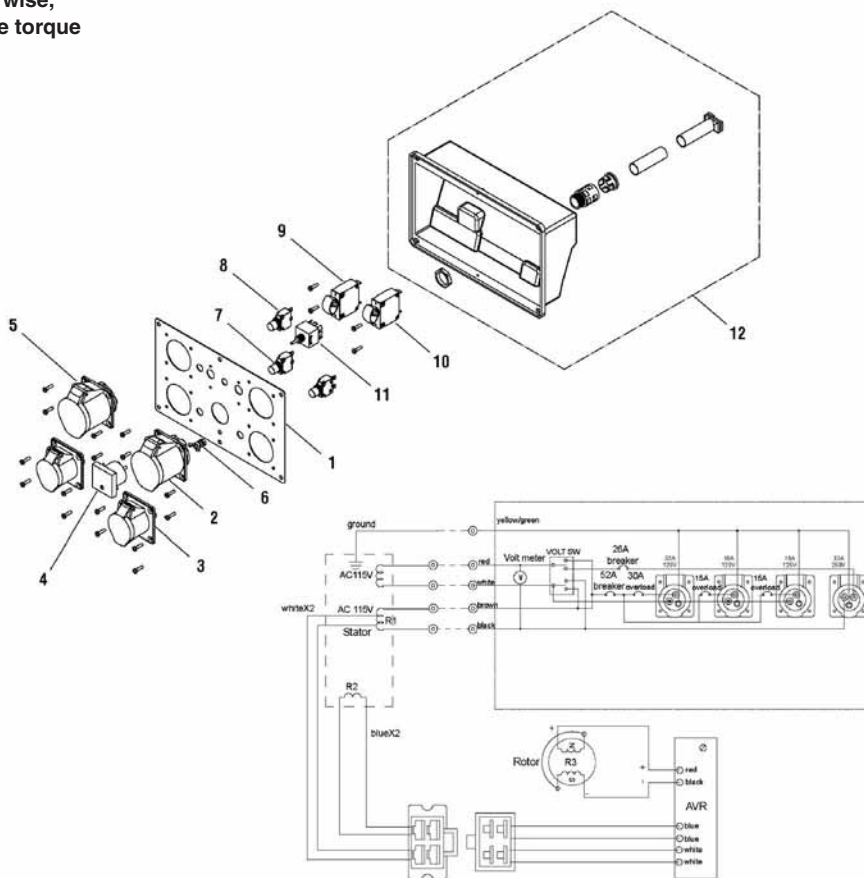
The above parts group applies to the following Mfg. Nos.:

030404-0 - ProMax 7500EA CE

Control Panel - UK

0002

NOTE: Unless noted otherwise, use the standard hardware torque specification chart.



Ref	Wire Colour	Winding	Resistance @ 20C
R1	Red - Black	Stator Power	0.43Ω±10%
R2	Blue - Blue	Stator Excitation	1.25Ω±10%
R3	NA	Rotor Field	39.5Ω±10%

REF. PART NO.	PART NO.	DESCRIPTION	REF. PART NO.	DESCRIPTION
1	103916GS	PLATE, Control Panel		
2	103913GS	SOCKET, CEE, 32A/230V		
3	103917GS	SOCKET, CEE, 16A/115V		
4	103919GS	VOLTMETER		
5	103940GS	SOCKET, CE, 32A/115V		
6	----	KIT, Grounding		
7	103914GS	BREAKER, 15A		
8	103941GS	BREAKER, 30A		
9	103954GS	CIRCUIT BREAKER/SWITCH, 1P/15A		
10	103953GS	CIRCUIT BREAKER/SWITCH, 1P/15A		
11	103942GS	VOLTAGE SWITCH, 12 connection		
12	103909GS	ASSEMBLY, Control Panel, Back Cover		

Footnotes

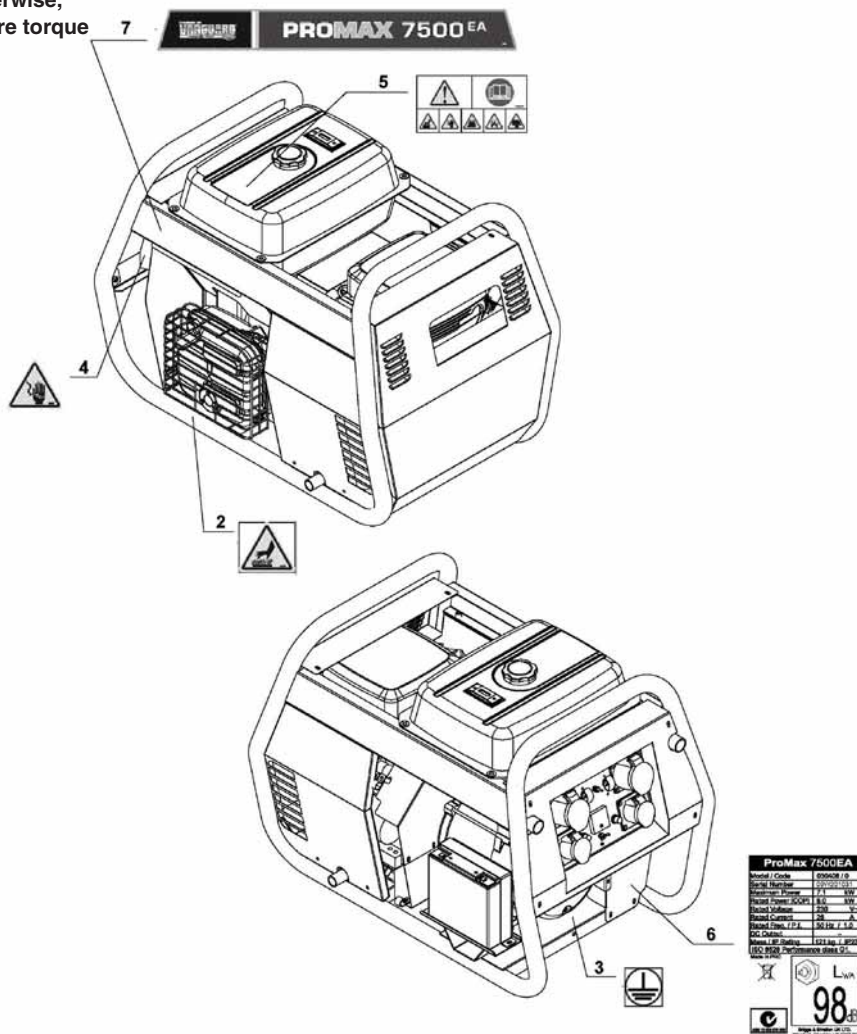
The above parts group applies to the following Mfg. Nos.:

030405-0 - ProMax 7500EA UK

Decals

0009

NOTE: Unless noted otherwise, use the standard hardware torque specification chart.



REF. PART NO.	DESCRIPTION	REF. PART NO.	DESCRIPTION
1	103858GS KIT, Decal (Includes Ref. Nos. 2, 3, 4 & 5)		
2	----- DECAL, Hot Hazard Warning		
3	----- DECAL, Ground		
4	----- DECAL, Electrical Hazard Warning		
5	----- DECAL, Warning/Read Manual		
6	----- DECAL, Dataplate		
7	103602GS DECAL, ProMax 7500EA		
8	MS5796 MANUAL, Owner's		

Footnotes

The above parts group applies to the following Mfg. Nos.:

030404-0 - ProMax 7500EA CE
030405-0 - ProMax 7500EA UK

030406-0 - ProMax 7500EA AU

Not for
Reproduction

Not for
Reproduction

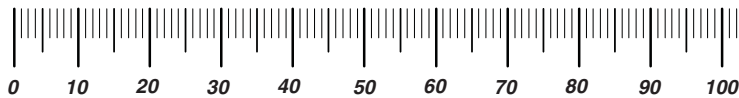
Not for
Reproduction

Not for
Reproduction

Hardware Identification & Torque Specifications

Torque Specification Chart								
FOR STANDARD METRIC MACHINE HARDWARE (Tolerance ± 20%)								
Property Class	5.6 Class 5.6		8.8 Class 8.8		10.9 Class 10.9		12.9 Class 12.9	
	in/lbs ft/lbs	Nm.	in/lbs ft/lbs	Nm.	in/lbs ft/lbs	Nm.	in/lbs ft/lbs	Nm.
M3	5.88	.56	13.44	1.28	19.2	1.80	22.92	2.15
M4	13.44	1.28	30.72	2.90	43.44	4.10	52.56	4.95
M5	26.4	2.50	60.96	5.75	5.97	8.10	7.15	9.7
M6	44.64	4.3	7.3	9.9	10.3	14	12.1	16.5
M7	5.2	7.1	12.1	16.5	16.9	23	19.9	27
M8	7.7	10.5	17.7	24	25	34	29	40
M10	15	21	35	48	50	67	59	81
M12	26	36	61	83	86.2	117	103	140
M14	42	58	101	132	136	185	162	220
M16	64	88	147	200	210	285	250	340
M18	89	121	202	275	287	390	346	470
M20	126	171	290	390	405	550	486	660
M22	169	230	390	530	559	745	656	890
M24	217	295	497	375	708	960	840	1140
M27	320	435	733	995	1032	1400	1239	1680
M30	435	590	995	1350	1401	1900	1681	2280
M33	590	800	1349	1830	1902	2580	2278	3090
M36	759	1030	1740	2360	2441	3310	2935	3980
M39	988	1340	2249	3050	3163	4290	3798	5150

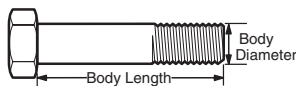
The guides and ruler furnished below are designed to help you select the appropriate hardware.



Nut, M8

Thread Diameter (mm)
Inside Diameter (in)
Threads per inch

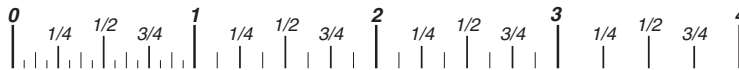
Nut, 1/2-16



Screw, M8- 1.25 x 25

Thread Diameter (mm)
Body Diameter
Distance between threads (mm)
Threads per inch
Body Length (mm)
Body Length (in)

Screw, 1/2- 16 x 2



Standard Hardware Sizing

When a washer or nut is identified as **1/2"** (M8), this is the *Nominal size*, meaning the *inside diameter* is 1/2 inch (8mm metric thread diameter); if a second number is present it represents the *threads per inch* (distance between threads).

When bolt or capscrew is identified as **1/2 - 16 x 2"** (M8 - 1.25 x 50), this means the *Nominal size*, or body diameter is 1/2 inch (8mm metric thread diameter), the second number, 16, represents the *threads per inch*, (1.25 thread diameter). The final number is the body length of the bolt or screw, 2 inches (50mm).

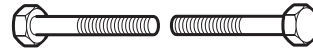
Torque Specification Chart						
FOR STANDARD MACHINE HARDWARE (Tolerance ± 20%)						
Hardware Grade	No Marks SAE Grade 2		SAE Grade 5		SAE Grade 8	
	in/lbs ft/lbs	Nm.	in/lbs ft/lbs	Nm.	in/lbs ft/lbs	Nm.
8-32	19	2.1	30	3.4	41	4.6
8-36	20	2.3	31	3.5	43	4.9
10-24	27	3.1	43	4.9	60	6.8
10-32	31	3.5	49	5.5	68	7.7
1/4-20	66	7.6	8	10.9	12	16.3
1/4-28	76	8.6	10	13.6	14	19.0
5/16-18	11	15.0	17	23.1	25	34.0
5/16-24	12	16.3	19	25.8	29	34.0
3/8-16	20	27.2	30	40.8	45	61.2
3/8-24	23	31.3	35	47.6	50	68.0
7/16-14	30	40.8	50	68.0	70	95.2
7/16-20	35	47.6	55	74.8	80	108.8
1/2-13	50	68.0	75	102.0	110	149.6
1/2-20	55	74.8	90	122.4	120	163.2
9/16-12	65	88.4	110	149.6	150	204.0
9/16-18	75	102.0	120	163.2	170	231.2
5/8-11	90	122.4	150	204.0	220	299.2
5/8-18	100	136	180	244.8	240	326.4
3/4-10	160	217.6	260	353.6	386	525.0
3/4-16	180	244.8	300	408.0	420	571.2
7/8-9	140	190.4	400	544.0	600	816.0
7/8-14	155	210.8	440	598.4	660	897.6
1-8	220	299.2	580	788.8	900	1,244.0
1-12	240	326.4	640	870.4	1,000	1,360.0

NOTES

- These torque values are to be used for all hardware excluding: locknuts, self-tapping screws, thread forming screws, sheet metal screws and socket head setscrews.
- Recommended seating torque values for locknuts:
 - for prevailing torque locknuts - use 65% of grade 5 torques.
 - for flange whizlock nuts and screws - use 135% of grade 5 torques.
- Unless otherwise noted on assembly drawings, all torque values must meet this specification.

Common Hardware Types

Hex Head Capscrew



Washer

Carriage Bolt



Lockwasher



Hex Nut

Wrench & Fastener Size Guide

1/4" Bolt or Nut Wrench—7/16"	5/16" Bolt or Nut Wrench—1/2"	3/8" Bolt or Nut Wrench—9/16"	7/16" Bolt or Nut Wrench (Bolt)—5/8" Wrench (Nut)—11/16"	1/2" Bolt or Nut Wrench—3/4"
M6 Bolt or Nut Wrench—10mm	M8 Bolt or Nut Wrench—13mm	M10 Bolt or Nut Wrench—17mm	M12 Bolt or Nut Wrench—19mm	M14 Bolt or Nut Wrench—22mm



Not for
Reproduction

Briggs & Stratton Power Products Group

Copyright© 2012 Briggs & Stratton Power Products Group. All rights reserved. No part of this page can be reproduced or transmitted in any form by any means without the express written permission of Briggs & Stratton Power Products Group.