



# *Illustrated Parts List*

## *ProMax 3500A*



### **Model**

<b>Mfg. No.</b>	<b>Description</b>
030395-0	ProMax 3500A Continental
030396-0	ProMax 3500A UK
030397-0	ProMax 3500A Australia
038029-00	ProMax 3500A Argentina

**Manual Part No. 103935GS**

Revision C

Rev. Date: 5/10/2013

Not for  
Reproduction

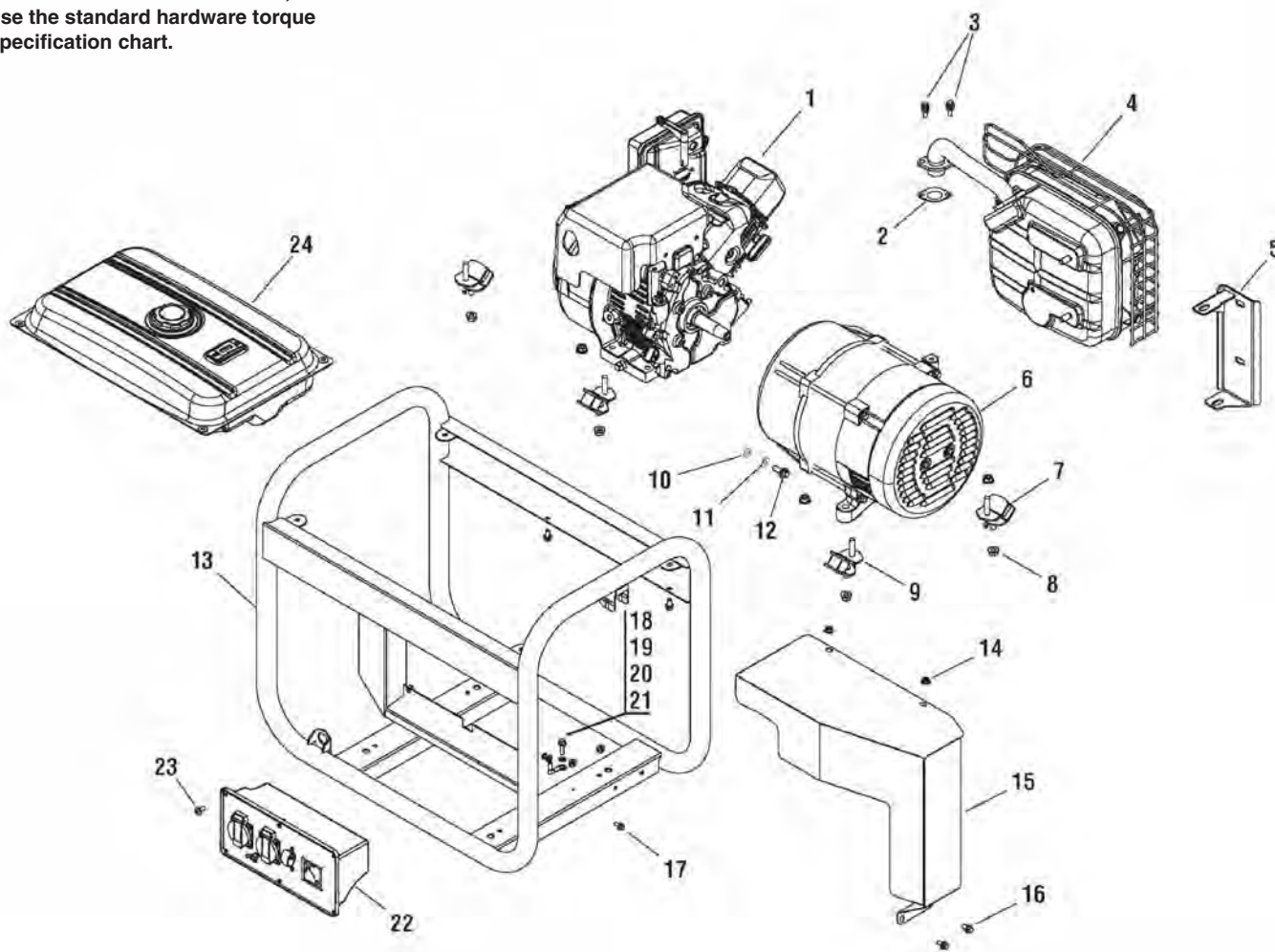
<b>PRODUCT COMPONENTS</b>	<b>PAGES</b>
Main Unit .....	4
Alternator .....	5
Fuel Tank .....	6
Exhaust And Fittings .....	7
Control Panel - ARG .....	8
Control Panel - AU .....	9
Control Panel - EU .....	10
Control Panel - UK .....	11
Decals .....	12
<b>Torque Specification Chart .....</b>	<b>Inside Back Cover</b>

Not for  
Reproduction

## Main Unit

030395mu

**NOTE:** Unless noted otherwise, use the standard hardware torque specification chart.



REF. PART NO.	DESCRIPTION	REF. PART NO.	DESCRIPTION
1	12H332-0119-B8 ** ENGINE (Engine Model: 12H332-0118-B8)	16	----- * SCREW, Flange, M6 x 12mm
2	710250 GASKET, Exhaust	17	----- * SCREW, Flange, M5 x 12
3	----- * BOLT	18	----- * WASHER, Shakeproof, M5
4	791185 MUFFLER	19	----- * SCREW, Self Drill, 5.5-1.8 x 20mm
5	103668GS BRACKET, Muffler	20	----- * WASHER, 6mm
6	103902GS ALTERNATOR ASSEMBLY (Used on Serial Number 10W070000 and before)	21	103665GS WIRE, Grounding
6	104909GS ALTERNATOR ASSEMBLY (Used on Serial Number 10W080000 and after)	22	103871GS CONTROL PANEL ASSEMBLY, AUS (Australia)
7	103614GS VIBRATION MOUNT ASSEMBLY, # 50	22	103669GS CONTROL PANEL ASSEMBLY, EU (Continental Europe)
8	----- * NUT, Flange, M8	22	103843GS CONTROL PANEL ASSEMBLY, UK (UK)
9	103614AGS VIBRATION MOUNT ASSEMBLY, # 48	22	704021 CONTROL PANEL ASSEMBLY, ARG (Argentina)
10	----- * WASHER, Spring, 8mm	23	----- * SCREW, Flange
11	----- * WASHER, 8mm	24	103663GS FUEL TANK, 15L
12	----- * SCREW, Flange		
13	103613AGS CRADLE		
14	----- * NUT, M6		
15	103616GS HEAT SHIELD		

### Footnotes

\* Items without part numbers are common fasteners and are available at local hardware stores.

\*\* For Replacement, Contact Engine Manufacturer.

### The above parts group applies to the following Mfg. Nos.:

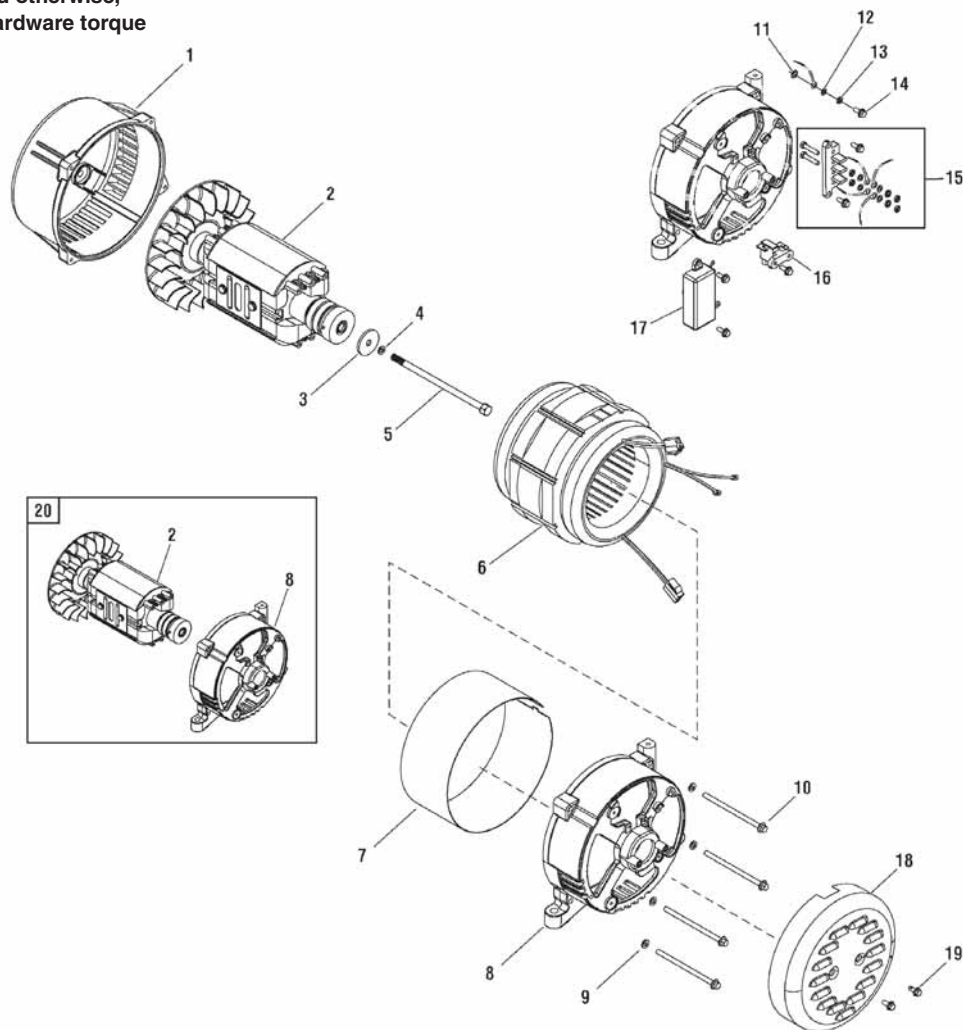
030395-0 - ProMax 3500A Continental  
030396-0 - ProMax 3500A UK

030397-0 - ProMax 3500A Australia  
038029-00 - ProMax 3500A Argentina

# Alternator

030395alt

**NOTE:** Unless noted otherwise, use the standard hardware torque specification chart.



REF. PART NO.	DESCRIPTION	REF. PART NO.	DESCRIPTION
1	103640GS FRONT CASING, Alternator	13	----- * WASHER, Spring, 6mm
2	----- ** ROTOR ASSEMBLY (Used on Serial Number 10W070000 and before)	14	----- * SCREW, Flange, M6 x 16mm
2	700445 ROTOR ASSEMBLY (Used on Serial Number 10W080000 and after)	15	103649GS TERMINAL BLOCK ASSEMBLY
3	----- * WASHER, 22 x 8mm	16	103650GS BRUSH ASSEMBLY
4	----- * WASHER, Spring, 8mm	17	103654GS AUTOMATIC VOLTAGE REGULATOR
5	103644GS BOLT, Flange, 5/16-24 x 210mm UNC	18	103651GS REAR COVER
6	103875GS STATOR ASSEMBLY	19	----- * SCREW, Flange, M5 x 12mm
7	103646GS STATOR BAND	20	104869GS KIT, Rotor & Casting (Includes Ref. Nos. 2 & 8)
8	----- ** REAR CASING, Alternator (Used on Serial Number 10W070000 and before)		
8	700448 REAR CASING, Alternator (Used on Serial Number 10W080000 and after)		
9	----- * WASHER, Spring, 6mm		
10	103648GS SCREW, Flange, M6 x 130mm		
11	----- * WASHER, Dentiform, 6mm		
12	----- * WASHER, 6mm		

## Footnotes

\* Items without part numbers are common fasteners and are available at local hardware stores.

\*\* No Longer Available, Order Rotor & Casting Kit 104869GS.

## The above parts group applies to the following Mfg. Nos.:

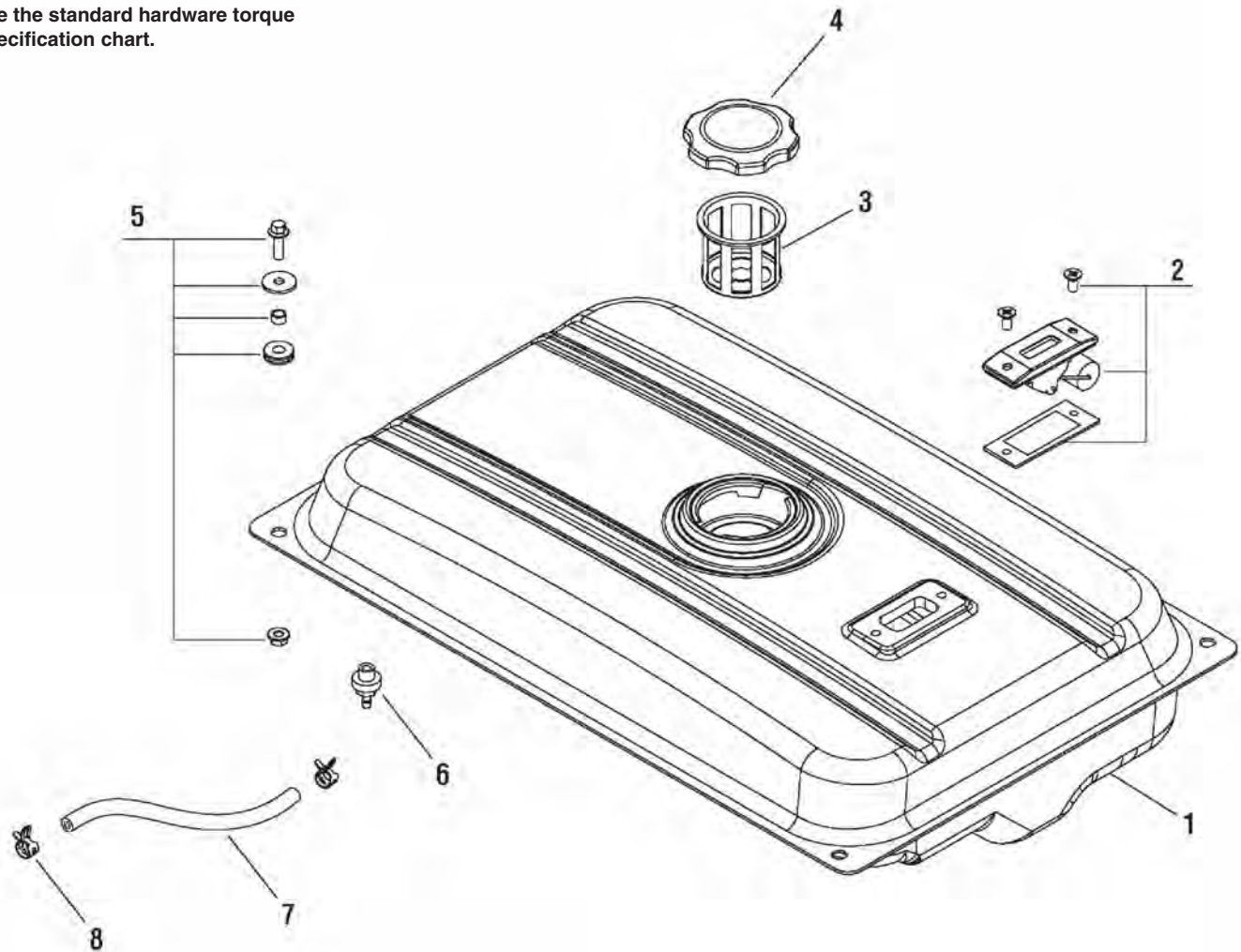
030395-0 - ProMax 3500A Continental  
030396-0 - ProMax 3500A UK

030397-0 - ProMax 3500A Australia  
038029-00 - ProMax 3500A Argentina

## Fuel Tank

030395tnk

**NOTE:** Unless noted otherwise, use the standard hardware torque specification chart.



REF. PART NO.	DESCRIPTION	REF. PART NO.	DESCRIPTION
1	103653GS	FUEL TANK, 15L	
2	103655GS	FUEL GAUGE ASSEMBLY	
3	103631GS	FILTER CUP	
4	103632GS	CAP, Fuel Tank	
5	103656GS	MOUNTING KIT	
6	103860GS	CONNECTOR, Fuel Tank	
7	----	* FUEL PIPE	
8	----	* CLAMP, Fuel Pipe, 5mm	

### Footnotes

\* Items without part numbers are common fasteners and are available at local hardware stores.

### The above parts group applies to the following Mfg. Nos.:

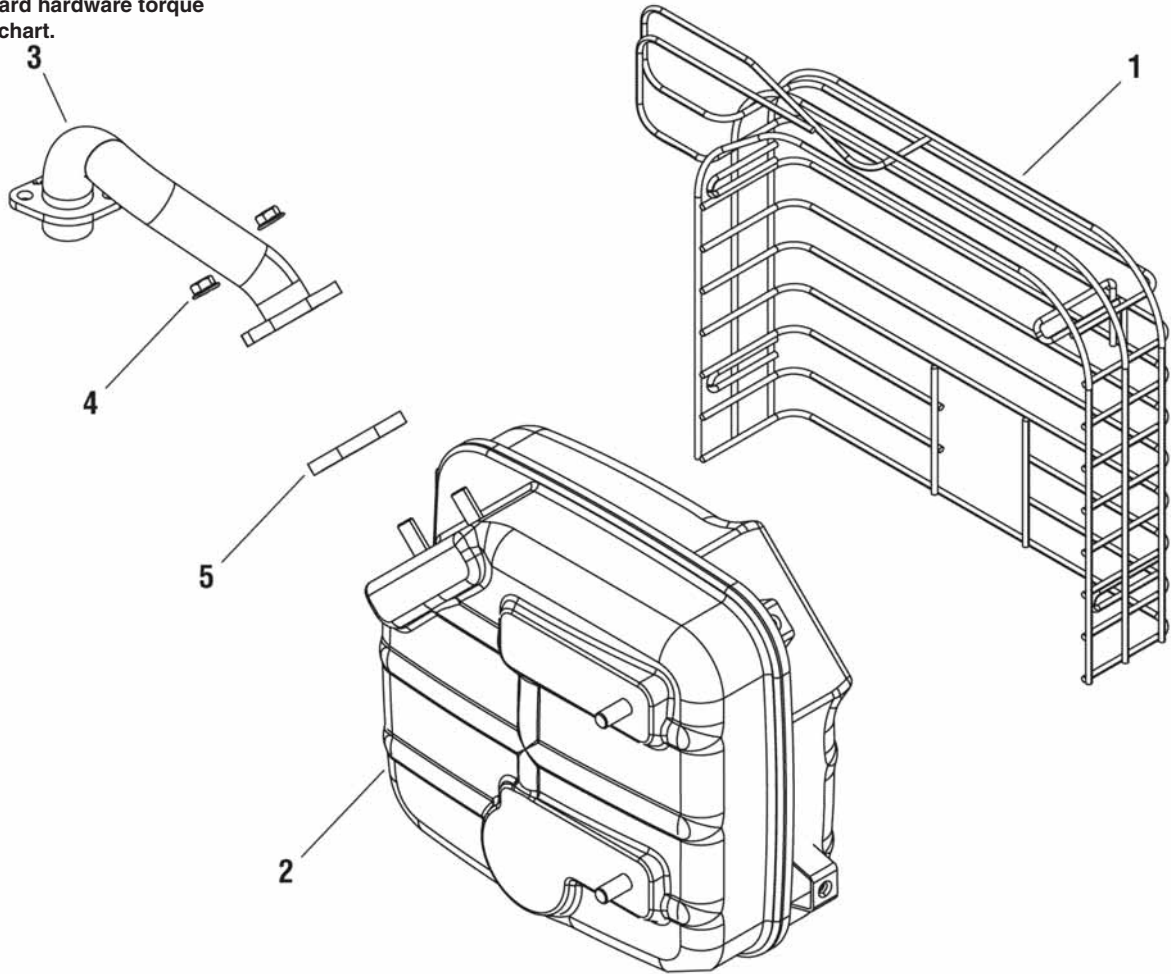
030395-0 - ProMax 3500A Continental  
030396-0 - ProMax 3500A UK

030397-0 - ProMax 3500A Australia  
038029-00 - ProMax 3500A Argentina

## Exhaust And Fittings

030395ex

NOTE: Unless noted otherwise,  
use the standard hardware torque  
specification chart.



REF. PART NO.	DESCRIPTION	REF. PART NO.	DESCRIPTION
1	103302GS GUARD, Muffler		
2	103303GS MUFFLER		
3	103309GS MANIFOLD ASSEMBLY		
4	710090 NUT, Flange, M8		
5	710250 GASKET, Exhaust		

### Footnotes

The above parts group applies to the following Mfg. Nos.:

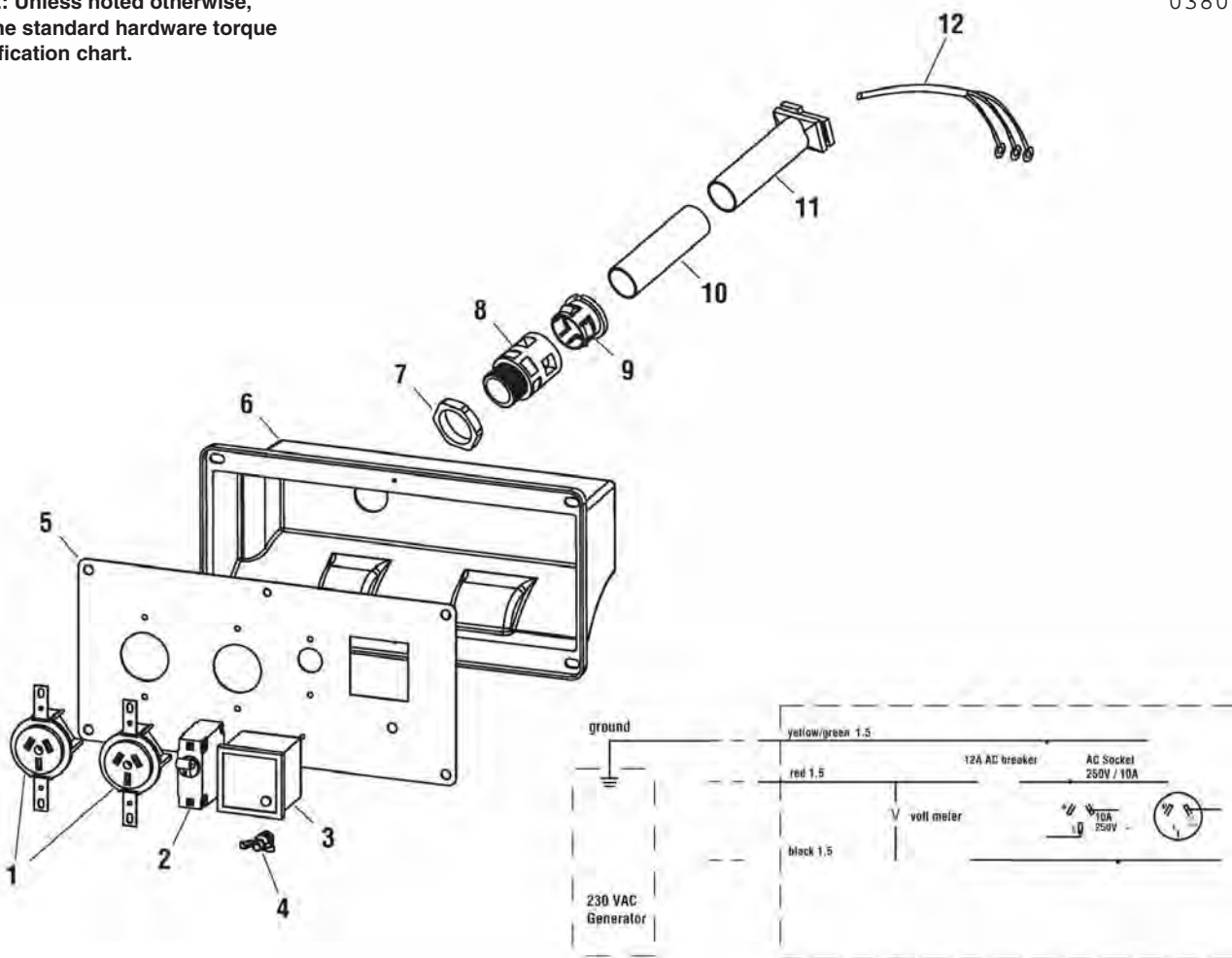
030395-0 - ProMax 3500A Continental  
030396-0 - ProMax 3500A UK

030397-0 - ProMax 3500A Australia  
038029-00 - ProMax 3500A Argentina

## Control Panel - ARG

038029cp

**NOTE:** Unless noted otherwise, use the standard hardware torque specification chart.



REF. PART NO.	DESCRIPTION	REF. PART NO.	DESCRIPTION
1	704098	SOCKET, 10A, BLACK	
2	704097	CIRCUIT BREAKER / SWITCH, 1P/12A	
3	704096	VOLTMETER	
4	-----	GROUNDING WIRE ASSEMBLY	
5	704094	PLATE, Control Panel	
6	704093	COVER, Control Panel	
7	704092	NUT, Cable Holder	
8	704091	CONNECTING END, Cable Holder	
9	704090	COVER, Connect End, Cable Holder	
10	704089	CABLE HOLDER	
11	704088	PROTECTOR, Cable	
12	704087	CABLE ASSEMBLY	

### Footnotes

**The above parts group applies to the following Mfg. Nos.:**

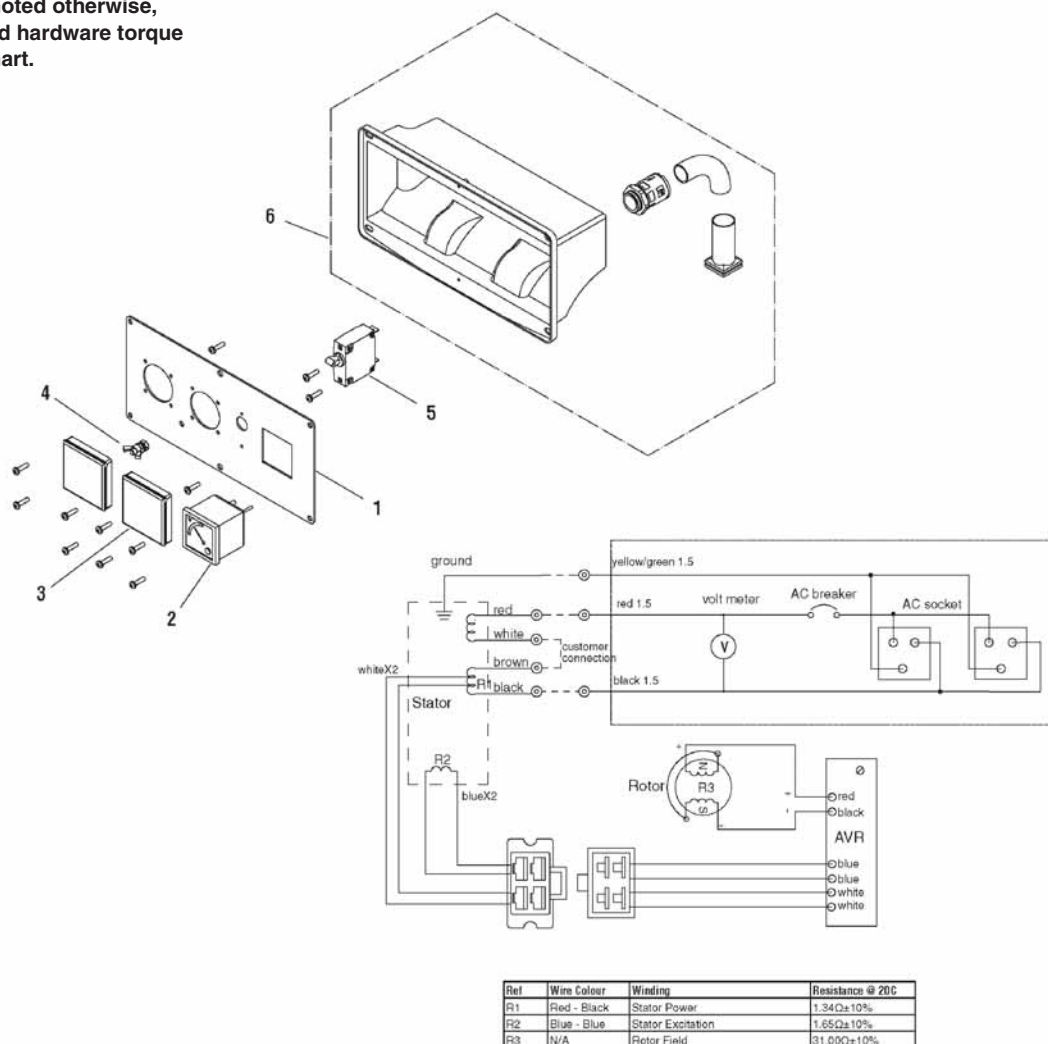
038029-00 - ProMax 3500A Argentina



## Control Panel - AU

030397cp

**NOTE:** Unless noted otherwise, use the standard hardware torque specification chart.



REF. PART NO.	PART NO.	DESCRIPTION	REF. PART NO.	DESCRIPTION
1	103873GS	CONTROL PANEL, Metal		
2	103625GS	VOLTMETER, 0-300V		
3	103879GS	SOCKET, Australian		
4	NSP	ASSEMBLY, Grounding wire		
5	103623GS	CIRCUIT BREAKER (13 A)		
6	103901GS	CONTROL PANEL, Back Cover Assembly		

### Footnotes

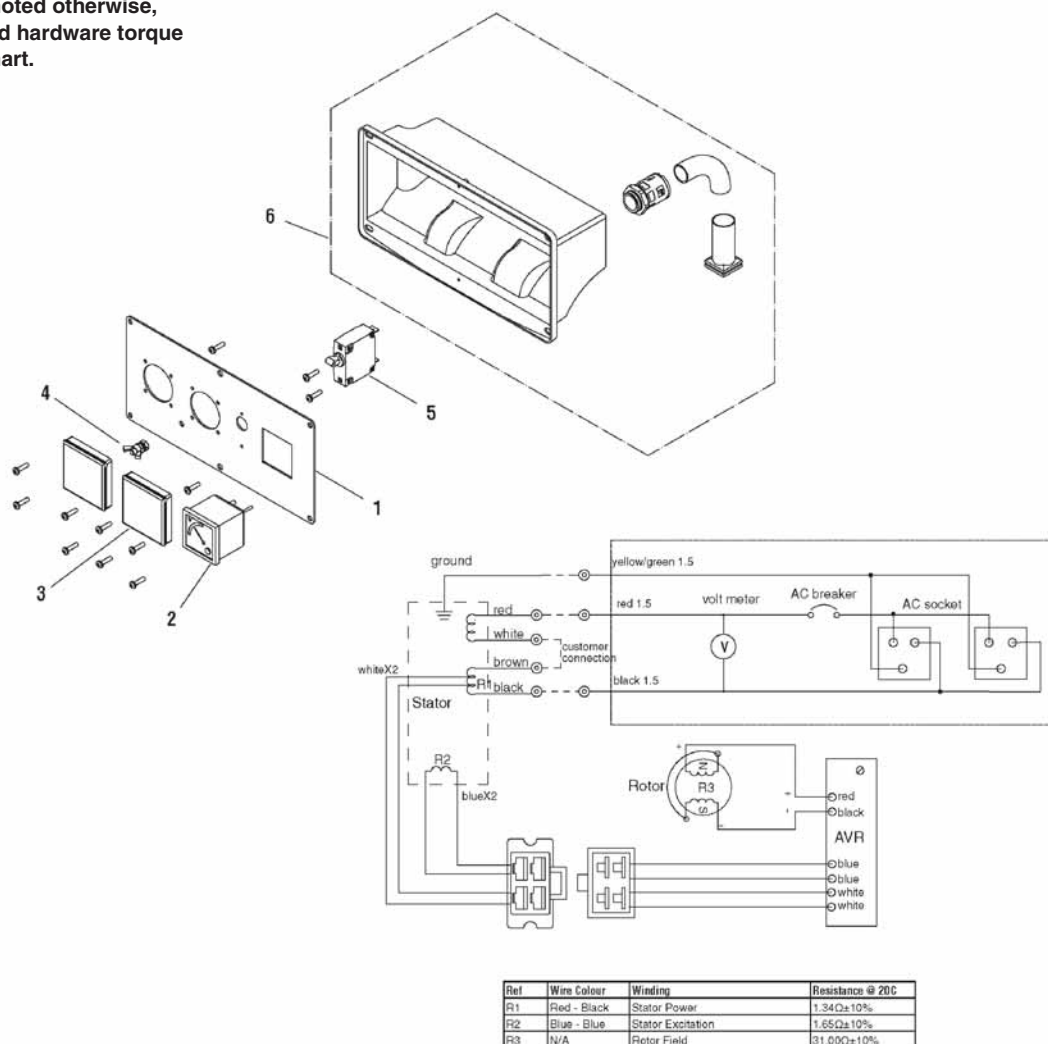
**The above parts group applies to the following Mfg. Nos.:**

030397-0 - ProMax 3500A Australia

## Control Panel - EU

030395cp

**NOTE:** Unless noted otherwise, use the standard hardware torque specification chart.



REF. PART NO.	PART NO.	DESCRIPTION	REF. PART NO.	DESCRIPTION
1	103873GS	CONTROL PANEL, Metal		
2	103625GS	VOLTMETER, 0-300V		
3	103855GS	SCHUKO SOCKET		
4	NSP	ASSEMBLY, Grounding Wire		
5	103623GS	CIRCUIT BREAKER (13A)		
6	103901GS	CONTROL PANEL, Back Cover Assembly		

### Footnotes

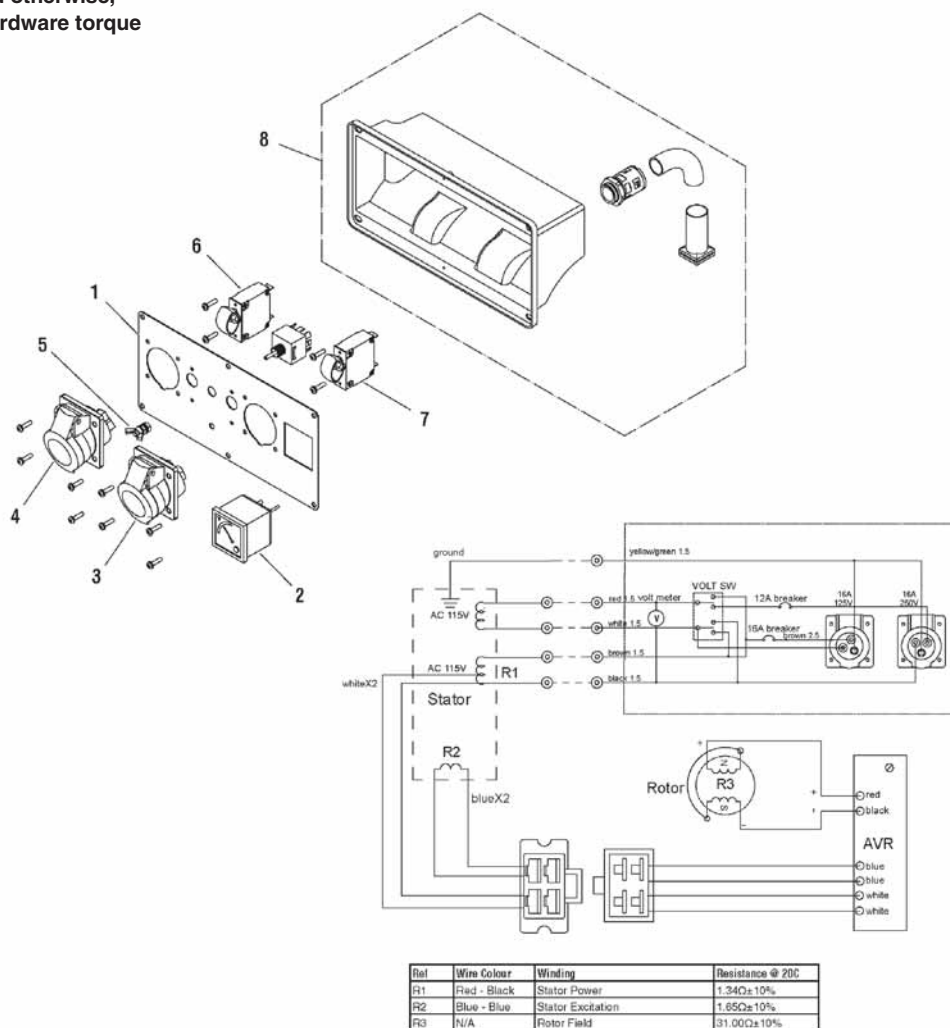
**The above parts group applies to the following Mfg. Nos.:**

030395-0 - ProMax 3500A Continental

## Control Panel - UK

030396cp

**NOTE:** Unless noted otherwise, use the standard hardware torque specification chart.



REF. PART NO.	DESCRIPTION	REF. PART NO.	DESCRIPTION
1	103907GS CONTROL PANEL, Metal		
2	103625GS VOLTMETER, 0-300V		
3	103876GS SOCKET, 230V x 16A CEE		
4	103877GS SOCKET, 115V x 16A CEE		
5	NSP ASSEMBLY, Grounding Wire		
6	103674GS CIRCUIT BREAKER (23 A)		
7	103623GS CIRCUIT BREAKER (13 A)		
8	103901GS CONTROL PANEL, Back Cover Assembly		

### Footnotes

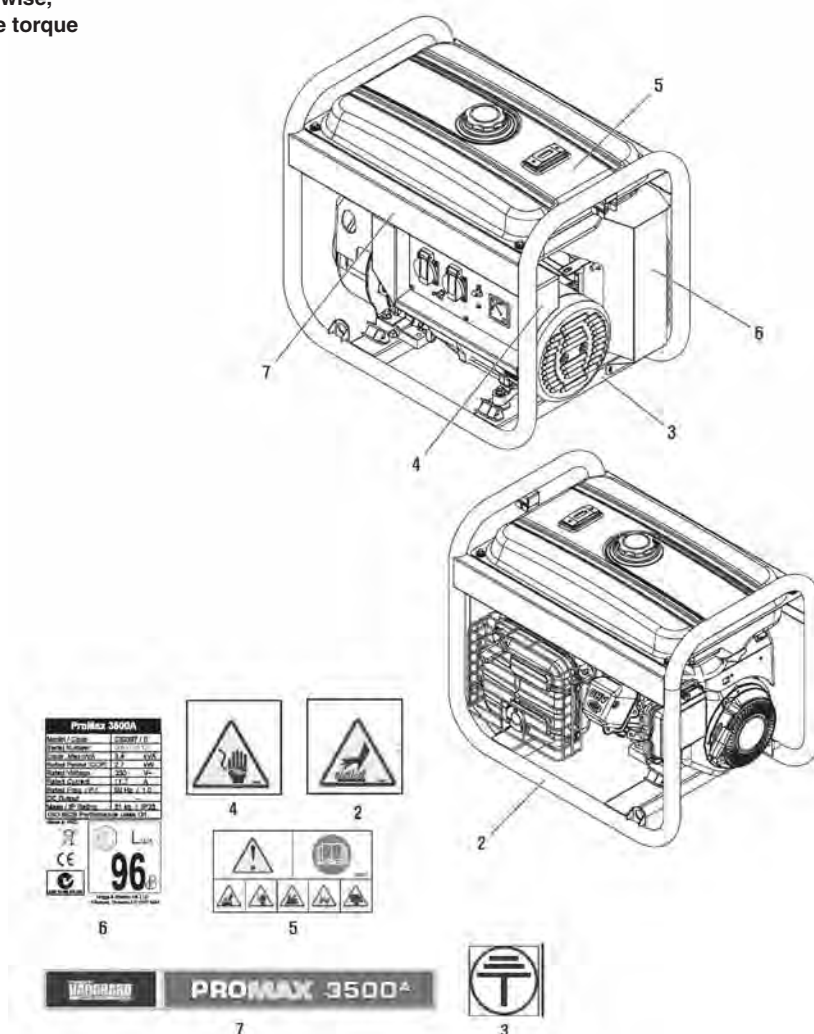
The above parts group applies to the following Mfg. Nos.:

030396-0 - ProMax 3500A UK

## Decals

030395dc1

**NOTE:** Unless noted otherwise, use the standard hardware torque specification chart.



REF.	PART NO.	DESCRIPTION	REF.	PART NO.	DESCRIPTION
1	103858GS	KIT, Decals (Includes Ref. Nos. 2, 3, 4 & 5)			
2	-----	DECAL, Hot Hazard Warning (Only Available in Kit)			
3	-----	DECAL, Ground (Only Available in Kit)			
4	-----	DECAL, Electrical Hazard Warning (Only Available in Kit)			
5	-----	DECAL, Warning/Read Manual (Only Available in Kit)			
6	-----	DECAL, Dataplate (Only Available in Kit)			
7	103597GS	DECAL, ProMax 3500A			
8	MS5796	OWNERS MANUAL			

## Footnotes

**The above parts group applies to the following Mfg. Nos.:**

030395-0 - ProMax 3500A Continental  
030396-0 - ProMax 3500A UK

030397-0 - ProMax 3500A Australia

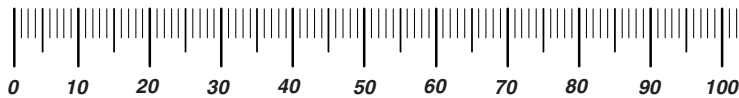
Not for  
Reproduction

Not for  
Reproduction

# Hardware Identification & Torque Specifications

Torque Specification Chart								
FOR STANDARD METRIC MACHINE HARDWARE (Tolerance ± 20%)								
Property Class	5.6		8.8		10.9		12.9	
	Class 5.6		Class 8.8		Class 10.9		Class 12.9	
Size Of Hardware	in/lbs		in/lbs		in/lbs		in/lbs	
	ft/lbs	Nm.	ft/lbs	Nm.	ft/lbs	Nm.	ft/lbs	Nm.
M3	5.88	.56	13.44	1.28	19.2	1.80	22.92	2.15
M4	13.44	1.28	30.72	2.90	43.44	4.10	52.56	4.95
M5	26.4	2.50	60.96	5.75	5.97	8.10	7.15	9.7
M6	44.64	4.3	7.3	9.9	10.3	14	12.1	16.5
M7	5.2	7.1	12.1	16.5	16.9	23	19.9	27
M8	7.7	10.5	17.7	24	25	34	29	40
M10	15	21	35	48	50	67	59	81
M12	26	36	61	83	86.2	117	103	140
M14	42	58	101	132	136	185	162	220
M16	64	88	147	200	210	285	250	340
M18	89	121	202	275	287	390	346	470
M20	126	171	290	390	405	550	486	660
M22	169	230	390	530	559	745	656	890
M24	217	295	497	375	708	960	840	1140
M27	320	435	733	995	1032	1400	1239	1680
M30	435	590	995	1350	1401	1900	1681	2280
M33	590	800	1349	1830	1902	2580	2278	3090
M36	759	1030	1740	2360	2441	3310	2935	3980
M39	988	1340	2249	3050	3163	4290	3798	5150

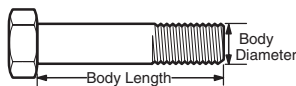
The guides and ruler furnished below are designed to help you select the appropriate hardware.



**Nut, M8**

Thread Diameter (mm)  
Inside Diameter (in) Threads per inch

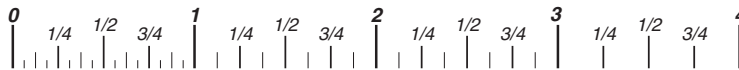
**Nut, 1/2-16**



**Screw, M8- 1.25 x 25**

Thread Diameter (mm) Distance between threads (mm) Body Length (mm)  
Body Diameter Threads per inch Body Length (in)

**Screw, 1/2- 16 x 2**



## Standard Hardware Sizing

When a washer or nut is identified as **1/2"** (M8), this is the *Nominal size*, meaning the *inside diameter* is 1/2 inch (8mm metric thread diameter); if a second number is present it represents the *threads per inch* (distance between threads).

When bolt or capscrew is identified as **1/2 - 16 x 2"** (M8 - 1.25 x 50 ), this means the *Nominal size*, or body diameter is 1/2 inch (8mm metric thread diameter), the second number, 16, represents the *threads per inch*, (*1.25 thread diameter*). The final number is the body length of the bolt or screw, 2 inches (50mm).

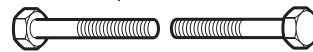
Torque Specification Chart						
FOR STANDARD MACHINE HARDWARE (Tolerance ± 20%)						
Hardware Grade	No Marks		No Marks		No Marks	
	SAE Grade 2		SAE Grade 5		SAE Grade 8	
Size Of Hardware	in/lbs		in/lbs		in/lbs	
	ft/lbs	Nm.	ft/lbs	Nm.	ft/lbs	Nm.
8-32	19	2.1	30	3.4	41	4.6
8-36	20	2.3	31	3.5	43	4.9
10-24	27	3.1	43	4.9	60	6.8
10-32	31	3.5	49	5.5	68	7.7
1/4-20	66	7.6	8	10.9	12	16.3
1/4-28	76	8.6	10	13.6	14	19.0
5/16-18	11	15.0	17	23.1	25	34.0
5/16-24	12	16.3	19	25.8	29	34.0
3/8-16	20	27.2	30	40.8	45	61.2
3/8-24	23	31.3	35	47.6	50	68.0
7/16-14	30	40.8	50	68.0	70	95.2
7/16-20	35	47.6	55	74.8	80	108.8
1/2-13	50	68.0	75	102.0	110	149.6
1/2-20	55	74.8	90	122.4	120	163.2
9/16-12	65	88.4	110	149.6	150	204.0
9/16-18	75	102.0	120	163.2	170	231.2
5/8-11	90	122.4	150	204.0	220	299.2
5/8-18	100	136	180	244.8	240	326.4
3/4-10	160	217.6	260	353.6	386	525.0
3/4-16	180	244.8	300	408.0	420	571.2
7/8-9	140	190.4	400	544.0	600	816.0
7/8-14	155	210.8	440	598.4	660	897.6
1-8	220	299.2	580	788.8	900	1,244.0
1-12	240	326.4	640	870.4	1,000	1,360.0

## NOTES

- These torque values are to be used for all hardware excluding: locknuts, self-tapping screws, thread forming screws, sheet metal screws and socket head setscrews.
- Recommended seating torque values for locknuts:
  - for prevailing torque locknuts - use 65% of grade 5 torques.
  - for flange whizlock nuts and screws - use 135% of grade 5 torques.
- Unless otherwise noted on assembly drawings, all torque values must meet this specification.

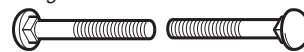
## Common Hardware Types

Hex Head Capscrew



Washer

Carriage Bolt



Lockwasher



Hex Nut

## Wrench & Fastener Size Guide

1/4" Bolt or Nut Wrench—7/16"	5/16" Bolt or Nut Wrench—1/2"	3/8" Bolt or Nut Wrench—9/16"	7/16" Bolt or Nut Wrench (Bolt)—5/8" Wrench (Nut)—11/16"	1/2" Bolt or Nut Wrench—3/4"
M6 Bolt or Nut Wrench—10mm	M8 Bolt or Nut Wrench—13mm	M10 Bolt or Nut Wrench—17mm	M12 Bolt or Nut Wrench—19mm	M14 Bolt or Nut Wrench—22mm



Not for  
Reproduction

**Briggs & Stratton Power Products Group**

Copyright© 2013 Briggs & Stratton Power Products Group. All rights reserved. No part of this page can be reproduced or transmitted in any form by any means without the express written permission of Briggs & Stratton Power Products Group.