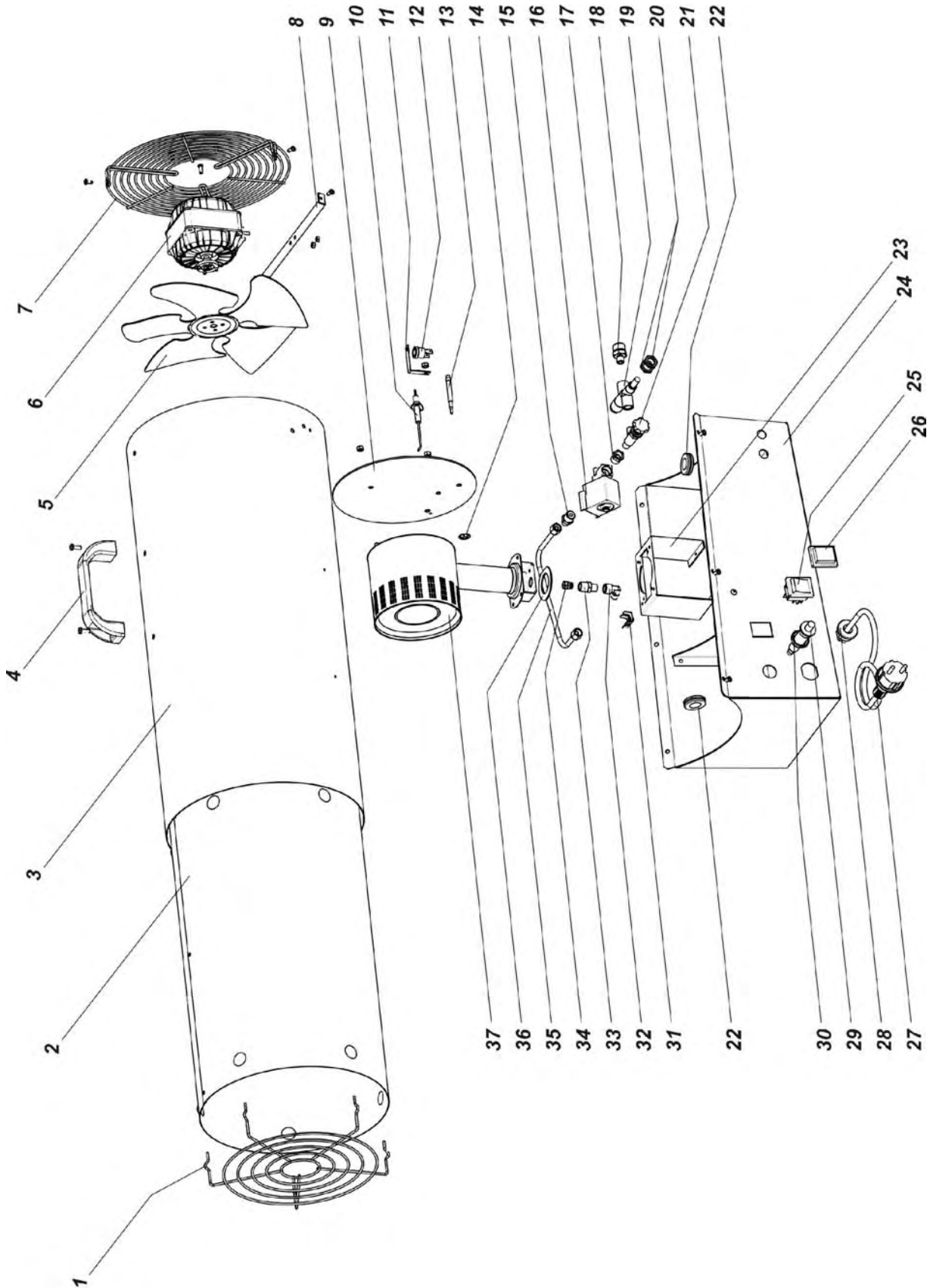


# MASTER GAS HEATERS

## MODEL 50 kW

## ILLUSTRATED PARTS BREAKDOWN



MASTER GAS HEATERS BLP 50M

| Pos. | Code NR  | Description                    |
|------|----------|--------------------------------|
| 1    | 4160.740 | OUTLET GRID                    |
| 2    | 4161.083 | COMBUSTION CHAMBER             |
| 3    | S/R      | COVER                          |
| 4    | 4160.715 | PLASTIC HANDLE                 |
| 5    | 4160.691 | FAN                            |
| 6    | 4160.630 | ELECTRIC MOTOR                 |
| 7    | 4160.739 | INLET GRID                     |
| 8    | 4161.013 | SUPPORT ELECTRIC MOTOR         |
| 9    | 4160.744 | PLATE BURNER                   |
| 10   | 4160.731 | IGNITION ELETTRICAL FOLDER     |
| 11   | 4160.708 | SUPPORT FOR THERMOSTAT         |
| 12   | 4160.636 | SAFETY THERMOSTAT 90°          |
| 13   | 4160.953 | INTERRUPTED THERMOCOUPLE       |
| 14   | 4160.627 | ELASTIC WASHER                 |
| 15   | 4160.962 | NOZZLE 1/4" - 1/8"             |
| 16   | 4160.963 | ELECTROVALVE                   |
| 17   | 4160.964 | NIPPLES REDUCER                |
| 18   | 4160.700 | GAS INLET NOZZLE 3/8 M - 1/8 M |
| 19   | 4160.688 | SAFETY GAS VALVE               |
| 20   | 4160.701 | RING NUT M12X0,75              |
| 21   | 4160.683 | GAS COCK                       |
| 22   | 4160.646 | GROMMET 16-30-22               |
| 23   | 4161.018 | SUPPORT BURNER                 |
| 24   | 4161.015 | BASE                           |
| 25   | 4160.637 | SWITCH                         |
| 26   | 4160.638 | COVER SWITCH                   |
| 27   | 4160.631 | ELECTRIC CABLE                 |
| 28   | 4160.635 | KEEPER WIRE DEVICE PA 107      |
| 29   | 4162.222 | PIEZO IGNITOR WITH ADAPTER     |
| 30   | N/A      | ADAPTER FOR PIEZO IGNITOR      |
| 31   | 4160.639 | RIVET POP                      |
| 32   | 4160.967 | 90° DEGREE ELBOW 1/8"          |
| 33   | 4160.768 | SUPPORT GAS NOZZLE             |
| 34   | 4160.766 | GAS NOZZLE                     |
| 35   | 4161.019 | COPPER EXTENDIN VALVOLE-NOZZLE |
| 36   | 4160.769 | NECK PLATE                     |
| 37   | 4160.676 | GAS BURNER                     |

S/R – Parts available by special request only

N/A – Parts not available