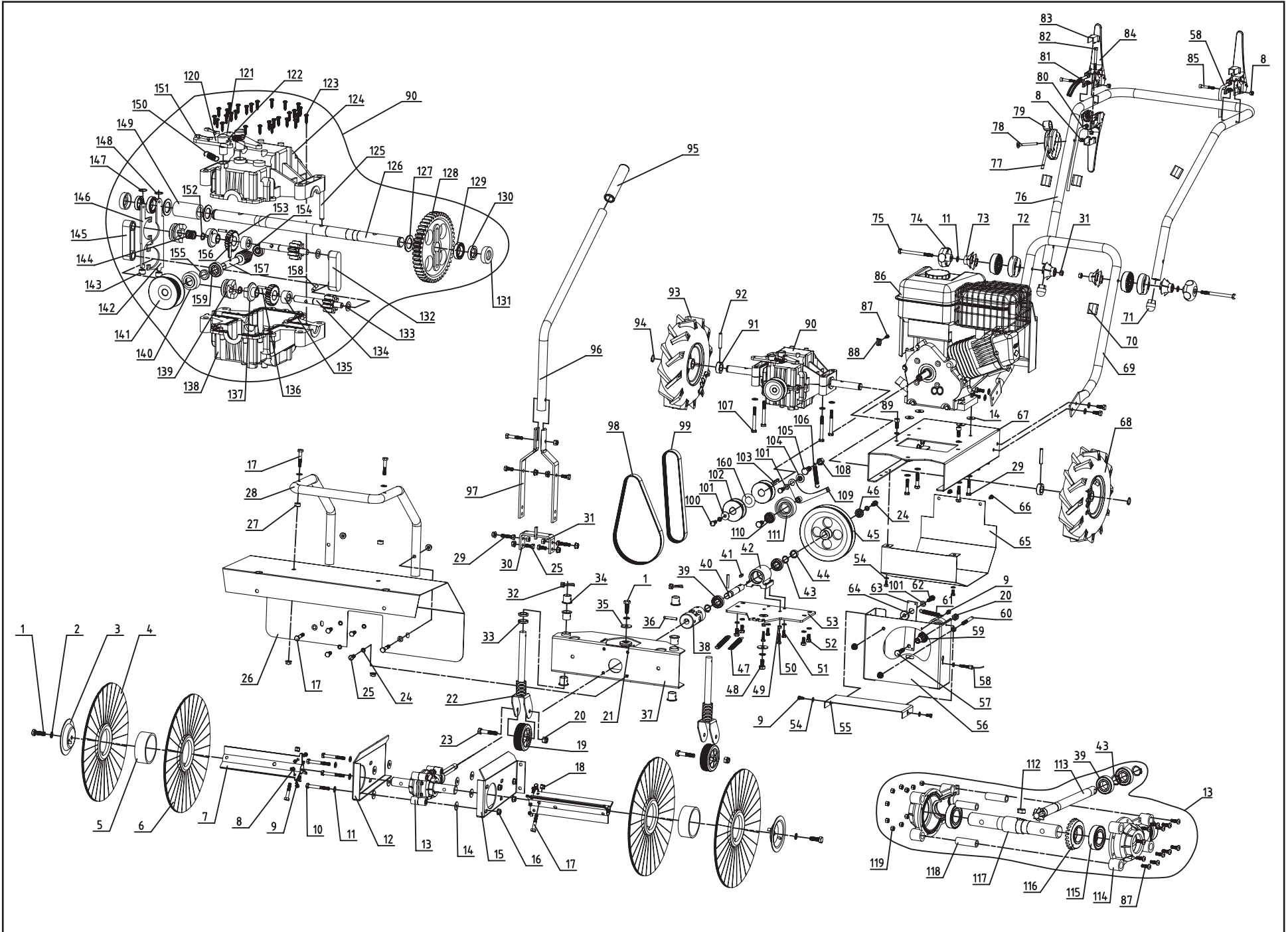


# K600 /32520/



<b>32520 Spare Parts List</b>		
No.	Description	Q'ty
1	Bolt M10X30	3
2	Washer 10	4
3	Brush Guard	2
4	Brush II	12
5	Brush Sleeve	10
6	Brush I	2
7	Brush Shaft Weldment	2
8	Nut M6	10
9	Blot M6X12	9
10	Blot M8X65	4
11	Washer 8	26
12	Gear Holder - Left	1
13	Gear Box	1
14	Washer 8	12
15	Gear Holder- Right	1
16	Nut M8	28
17	Blot M8X45	7
18	Nut M8	3
19	Guiding Wheel	2
20	Nut M10	3
21	Washer-upper	1
22	Guiding Fork	2
23	Blot M10X50	2
24	Spring Washer 8	12
25	Blot M8X20	14
26	Guard Plate	1
27	Guard Sleeve	2
28	Syphon	1
29	Blot M8X40	6
30	U Shape Plate	1
31	Nut M8	6
32	Circlips	2
33	Plastic Washer	20
34	Plastic Bushing	6
35	Washer 10	2
36	Round Pin 6X40	2
37	Front Stand Weldment	1
38	Gimbal joints	1
39	Bearing 6003	4
40	Shaft	1
41	Key A 5X20	1
42	Bearing House	1
43	Circlip	4
44	Bushing	1
45	Pulley	1
46	Washer	1
47	Swing Spring	2
48	Blot M10X20	2
49	Nut M6	3
50	Blot M6X25	2
51	Blot M6X16	2
52	Blot M8X16	4
53	Steering Fixing Plate Weldment	1
54	Washer 6	11
55	Cover Board	1
56	Tensioner Stand	1
57	Bolt M10X40	1

58	Clutch Cable	1
59	Bushing	1
60	Screw	1
61	Spring	1
62	blot M8X30	1
63	Tensioner Fixing Plate II	1
64	Washer	1
65	Driving Assy Guard	1
66	Blot M6X12	4
67	Engine Base	1
68	Tyre - Left	1
69	Pusher Support	1
70	Line Card 25	5
71	Round Stem	2
72	Holder	4
73	Ferrule	4
74	Wing Nut	2
75	Blot M8X100	2
76	Handle	1
77	cable throttle	1
78	Blot M6X60	1
79	Throttle Control Assy	1
80	CKA Clutch Cable I	1
81	CKA Clutch Cable	1
82	Screw M6X60	1
83	Clutch Handle Cover	3
84	clutch handle	3
85	screw M6X40	2
86	Engine	1
87	Screw M5X16	13
88	Engine Lock Grip	1
89	Screw M8X20	2
90	Driving Assy	1
91	Washer	2
92	Round Pin 8X45	2
93	Tyre - right	1
94	Circlip	2
95	handle grip	1
96	Turning Handle	1
97	Handle Fixing Plate	2
98	Belt 8PJ685	1
99	Belt 8PJ620	1
100	Bolt 5/16"	1
101	Washer 8	3
102	Pulley	2
	Key C4.75X45	
104	Washer	1
	Bolt M12.5X1.25X30	
106	Spring	1
107	Bolt M8X70	4
	Nut M12X1.25	
109	Arm Pulley	1
110	Bearing 6200	2
111	Idle Pullry	2
112	Key A8X16	1
113	Bevel Gear - Small	1
114	Bevel Gear Shell	2
115	Bearing 6005	2
116	Bevel Gear - Big	1
117	Output Shaft	1

118	Bevel Gear Shell Gasket	4
119	Nut M5	12
120	Clutch Revolving Arm II	1
121	Clutch Revolving Arm I	1
122	Spring	1
123	screw ST4.2X16	30
124	Shell	1
125	Straight Pin 8X70	1
126	Tyre Shaft	1
127	Washer	3
128	Driving Gear Wheel	1
129	Bearing 61804	2
130	Oil Seal A19X27X6	2
131	Oil Seal Retainer	2
132	Worm Bearing Seat I	1
134	Driving Gear Wheel	2
135	Worm Shaft Sleeve	2
136	Straight Pin 4X18	2
137	Jaw Clutch I	2
138	Shell II	1
139	Jaw Clutch II	2
140	Worm Bearing Seat	1
141	Gearbox Belt Pulley	1
142	Fork I	1
143	Fork Crown Cover	2
144	Clutch Band Spring	2
145	Worm Bearing Seat II	1
146	Fork II	1
147	O-ring 11.8X1	1
148	O-ring 14X1	1
149	Driving Shaft Sleeve	1
150	/	/
151	Cotter Pin 4X25	2
152	Circlips for Shaft 12	2
153	Worm Wheel	2
154	Bearing 608	1
155	Oil Seal A12X19X5	1
156	Round Pin 5X30	1
157	Worm Gear	1
158	Pin	2
159	Bearing 6001	1
160	Washer	3