

GENERAL PURPOSE ENGINE

GXV50U

PARTS CATALOGUE

1



GXV50U

FOREWORD INDEX

1

ENGINE GROUP

2

PART NUMBER INDEX

3

PART NAME INDEX

4

Instruction for use of parts catalogue

- **This parts catalogue was prepared based on the latest information available as of June 20, 2005.**
- See the parts catalogue news for any revision that is made after June 20, 2005.
- **Always specify the part number when ordering a part.**
- Check the model, type, serial numbers, color, maker, and the size as needed before ordering a part.
- Note that the illustrations (part drawings) can differ from the actual parts in shape. They are given just to help you to refer to the parts.
- **When modifications or additions to this parts catalogue are made, a revised edition will be issued at an appropriate time, with successively progressing revision numbers on the cover. We recommend obtaining such revisions in order to keep your parts catalogue up-to-date at all times. To check whether a parts catalogue revision has been issued, please contact your Honda distributor.**

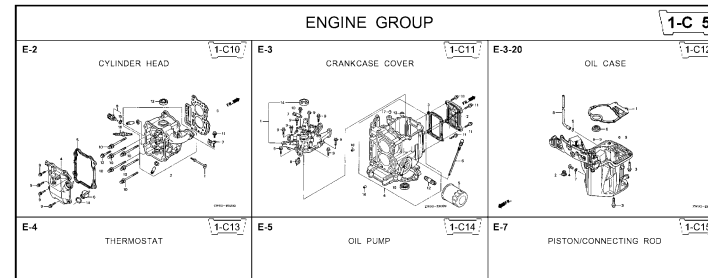
Initial version issue date **June 20, 2005**
Honda Motor Co., Ltd.

CONTENTS

	Page	Address No.	
● Instruction for use of parts catalogue	1	B 1	1
● How to refer to the part information	2	B 2	
● Part catalogue structure	3	B 3	
● When the parts were revised	4	B 4	
● Abbreviations used in the parts catalogue	4	B 4	
● How to check the part block and serial numbers	5	B 5	
● Models, parts catalogue codes and applicable serial numbers	6	B 6	
● Features of each type	6	B 6	
● Fuel hose, general purpose hoses and vinyl hose	7	B 7	
● FLAT RATE SERVICE TIME	8	B 8	
● Illustrated index	13	B13	
● ENGINE GROUP	15	C 1	2
● PART NO. INDEX	32	E 1	3
● PART NAME INDEX	33	F 1	4

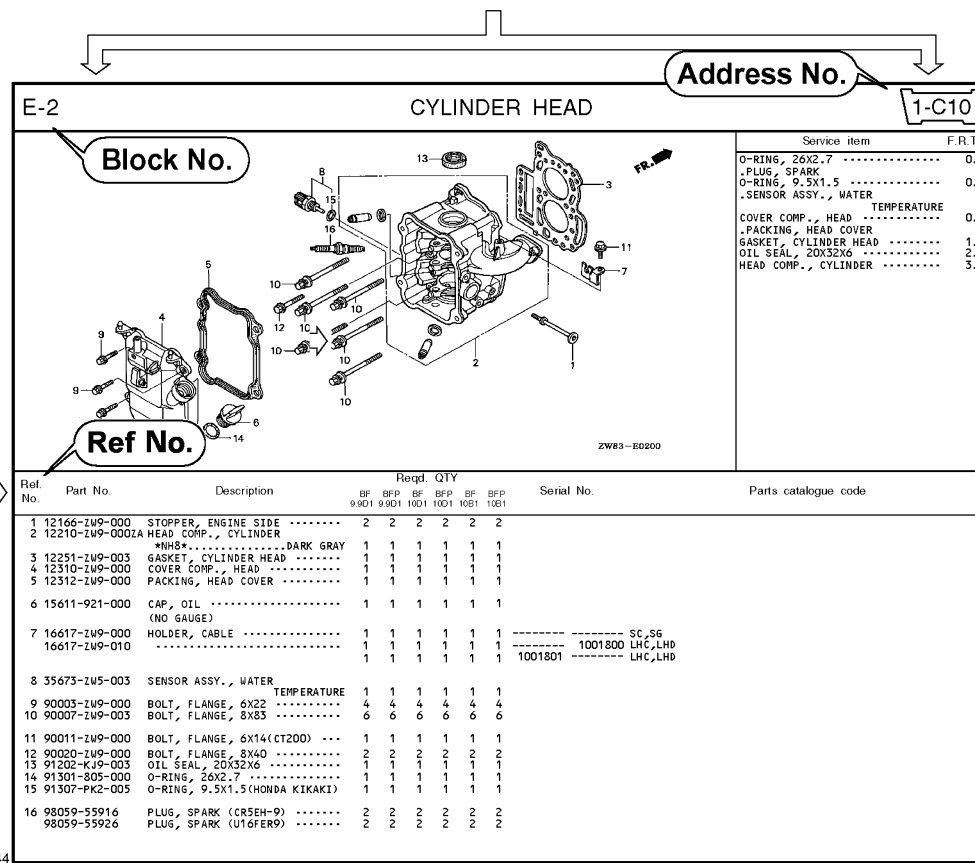
How to refer to the part information

A Reference with "Illustrated index"



B Reference with "Part number index"

PART NO. INDEX					
Part Number	Address	Page	Rel.	Part Number	Address Page
06000				15212-ZW9-000	1-C14 3C
06316-ZW9-000	1-69	88	1	15220-ZW9-003	1-C14 3C
11000				15332-ZW9-000	1-E8 55
11300-ZW9-405	1-C11	27	1	15332-ZW9-A30	1-E11 5E
11300-ZW9-406	1-C11	27	1	15400-PFB-004	1-C11 27
11340-ZW9-000	1-C11	27	2	15422-ZW9-000	1-C14 3C
11342-ZW9-000	1-C11	27	3	15473-881-000	1-C14 3C
11381-ZW9-003	1-C12	28	1	15474-ZW9-000	1-C14 3C
				15611-921-000	1-C10 2E
				15655-ZW9-000	1-C11 27
				16000	
12000				16010-ZV4-005	1-D4 3E
12000-ZW9-405ZA	1-C11	27	4	16011-ZV4-005	1-D4 3E
12155-ZV4-A00	1-C13	29	1	16013-ZW9-003	1-D4 3E
12166-ZW9-000	1-C10	26	1	16016-ZW9-003	1-D4 3E
12209-GB4-681	1-C16	32	1	16016-ZW9-721	1-D4 3E
12210-ZW9-405ZA	1-C10	26	2	16023-ZW9-003	1-D4 3E
12216-ZE2-300	1-E8	55	1	16024-ZV4-650	1-D4 3E
	1-E11	58	1	16028-ZV4-650	1-D4 3E



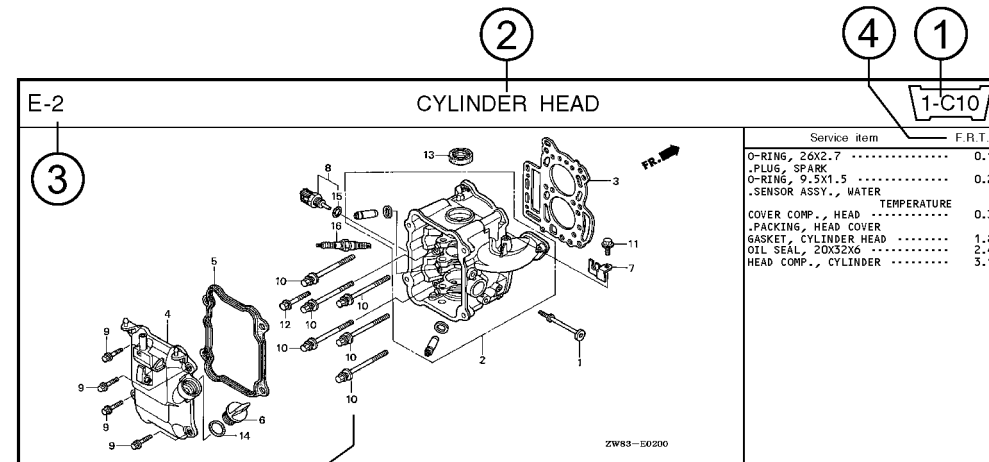
C Reference with "Part name index"

PART NAME INDEX					
Part name	Address	Page	Ref.		
[A]				BOLT,	
ABSORBER, FUEL	1-E15	62	5	BOLT,	
ARMATURE COMP.	1-D11	43	7	BOLT,	
ARM COMP., LINK JOINT	1-G6	85	18	BOLT,	
ARM COMP., SHIFT LINK	1-G6	85	14	BOLT,	
ARM COMP., TILT	1-F15	79	20		
ARM, FUEL PUMP ROCKER	1-C16	32	4		
ARM, REVERSE LOCK	1-F15	79	18		
ARM, SHIFT LINK	1-F11	74	7		
ARM, STOPPER	1-D1	33	12	BOLT,	
ARM, THROTTLE REMOTE	1-F11	74	6		
ARM, VALVE ROCKER	1-C16	32	3		
[B]					
BAG, TOOL, 160MM	1-G5	84	10		
BAND	1-G6	86	37		
BAND B1, WIRE	1-F6	69	1		
BAND, CORD	1-F3	67	18	BOLT,	
BAND, TUBE CLIP, 11MM	1-E15	63	20		
BAND, TUBE CLIP, 12.5MM	1-E15	63	19	BOLT,	

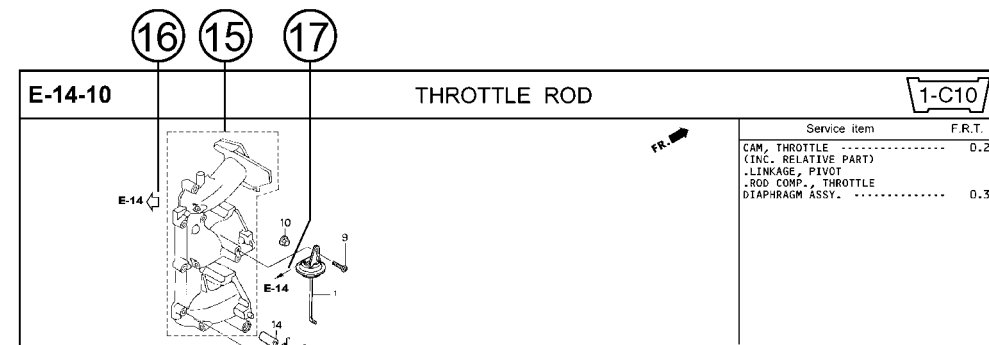
Page No.

2000.09.20 E

Part catalogue structure



Ref. No.	Part No.	Description	Reqd. QTY						Serial No.	Parts catalogue code
			BF 9/901	BFP 9/901	BF 1001	BFP 1001	BF 1081	BFP 1081		
1	12166-zw9-000	STOPPER, ENGINE SIDE	2	2	2	2	2	2		
2	12210-zw9-000ZA	HEAD COMP., CYLINDER *NH8* DARK GRAY	1	1	1	1	1	1		
3	12251-zw9-003	GASKET, CYLINDER HEAD	1	1	1	1	1	1		
4	12310-zw9-000	COVER COMP., HEAD	1	1	1	1	1	1		
5	12312-zw9-000	PACKING, HEAD COVER	1	1	1	1	1	1		
6	15611-921-000	CAP, OIL (NO GAUGE)	1	1	1	1	1	1		
7	16617-zw9-000	HOLDER, CABLE	1	1	1	1	1	1	SC,S6	
	16617-zw9-010		1	1	1	1	1	1	1001800 LHC,LHD	



① Address number

- Address No. is provided (in place of the page No.) to help you refer to the part with the part No. or part name.

② Block title ③ Block number

④ Service item/Flat rate time

⑤ Reference number

- Title number marked with the parenthesis or parentheses indicates that it continues from the previous page.

⑥ Part number ⑦ Honda color code

⑧ Description

⑨ Assemblies

- Sections framed with broken lines in the exploded view drawings are available as complete assemblies. (Their individual parts can also be obtained.)

⑩ Color description

⑪ Note

- Notes are shown with the parentheses in the part name column.

⑫ Required quantity

- Required QTY shown in the parenthesis or parentheses indicates the optional part.
- Required QTY marked with "N" Indicates the optional part that should be selected as needed.
- Required QTY indicates the number of the part used in the block.

⑬ Serial number

⑭ Type

- When the type column is blank, it indicates that the part is applicable to all types.
- As the type of the actual unit may differ from the "parts catalogue, type" please refer to "Models, types and applicable serial numbers" for confirmation.

⑮

- Parts enclosed within a dotted line are covered in a different block.

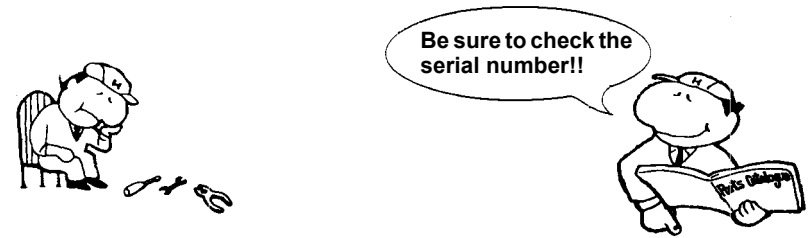
⑯

- A hollow arrow indicates the block No. for the parts enclosed within a dotted line .

⑰

- A solid arrow indicates the block No. the part in question is connected to.

When the parts were revised



Ref. No.	Part No.	Description	Reqd. QTY						Serial No.
			BF 99D1	BFP 9.9D1	BF 10D1	BFP 10D1	BF 10B1	BFP 10B1	
1	12166-ZW9-000	STOPPER, ENGINE SIDE	2	2	2	2	2	2	
2	12210-ZW9-000ZA	HEAD COMP., CYLINDER *NH8*.....DARK GRAY	1	1	1	1	1	1	
3	12251-ZW9-003	GASKET, CYLINDER HEAD	1	1	1	1	1	1	
4	12310-ZW9-000	COVER COMP., HEAD	1	1	1	1	1	1	
5	12312-ZW9-000	PACKING, HEAD COVER	1	1	1	1	1	1	
6	15611-921-000	CAP, OIL (NO GAUGE)	1	1	1	1	1	1	
7	16617-ZW9-000	HOLDER, CABLE (###).....	1	1	1	1	1	1	SC, SG LHC, LHD LHC, LHD
	16617-ZW9-010	1	1	1	1	1	1	

The number has been used from the initial model without revision. When shown at the left side, it is applicable to the models of No.1001801 and the subsequent numbers. When shown at the right side, it is applicable to the models up to No.1001800.

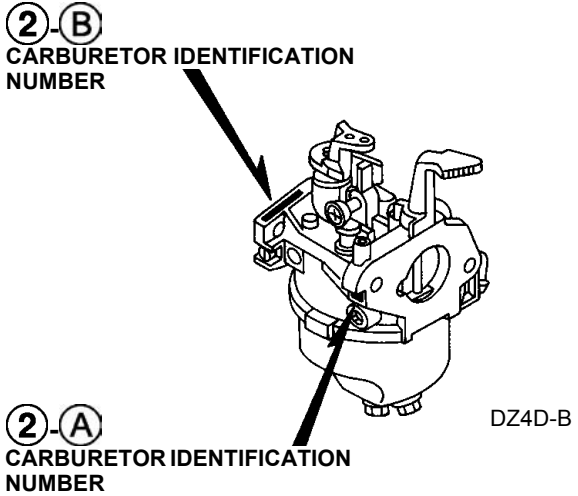
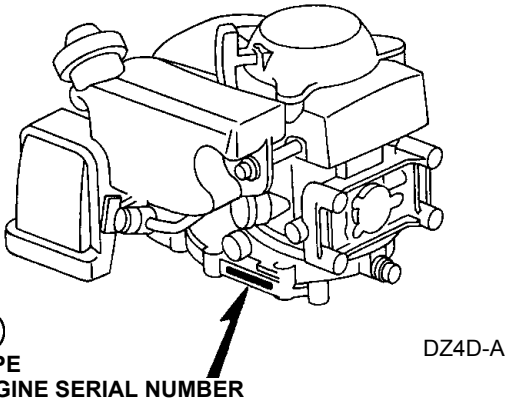
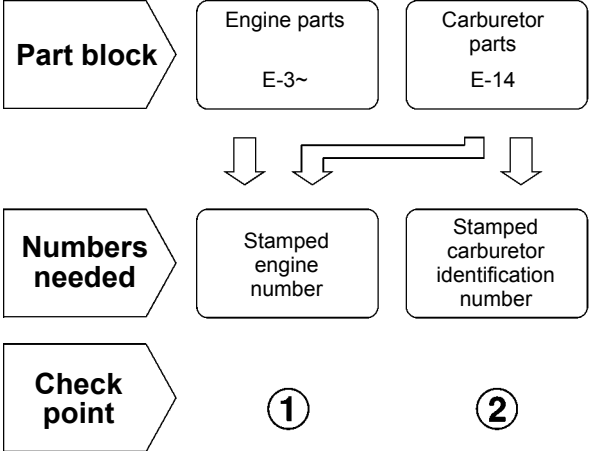
• The parts listed with "###" at the end of the parts name have limited supply period (parts not for sale).

Abbreviations used in the parts catalogue

• The following abbreviations are used in the parts name column.

- A Ampere
- A.C. Alternating current
- ASSY. Assembly
- AT. Automatic transmission
- C.D.I. Capacitive discharge ignition
- COMP. ... Complete
- D.C. Direct current
- EX. Exhaust
- G.F.C.I ... Ground fault circuit interruptor
- HEX. Hexagonal
- H.S.T. Hydrostatic transmission
- FR.Front
- IN.Inlet
- L (100L) .Link (100 Links)
- L.Left
- MMMillimeter
- MT.Manual Transmission
- P.T.O.Power take off
- R.Right
- RR.Rear
- STD.Standard
- T (22T) ...Tooth (22 Teeth)
- VVolt
- WWatt

How to check the part block and serial numbers



Models, parts catalogue codes and applicable serial numbers

- Models, parts catalogue codes and applicable serial Nos. given in this parts catalogue can be identified as follows.

Model	Type	Parts catalogue type	Applicable engine serial No.	Applicable carburetor identification No.
GXV50U	SA	SA	GJAAK-1000001~	BF31D D
	SAR	SAR		
	SER	SER		
	VA	VA		
	VE	VE		

* Of carburetor identification numbers, only the portions underlined in the example below are used for registration.

BF 31D D KC ナ
(A) (B)

Features of each type

- See the following table for the features of each type. (Items in brackets are optional)

Specifications		Model	GXV50U				
		Type	SA	SAR	SER	VA	VE
Crankshaft	Straight		●	●	●		
	Tapered					●	●
Spark arrester			(●)	●	●	(●)	(●)

Fuel hose, general purpose hoses and vinyl hose

- The standard part fuel hose, general purpose hose and vinyl hose may be substituted by the coiled bulk part.
- When ordering the standard part fuel hose, general purpose hose and vinyl hose use the bulk part number written in the parts catalog in brackets () underneath the part name.
- When exchanging the hose, cut and use at the specified length as mentioned in the part name.
(For the method of cutting the bulk part, and method of filling out orders etc., please refer to the instructions issued with the bulk part.)

Bulk part number of fuel hose, general purpose hose and vinyl hose.

Example: 9 5 0 0 1 - 7 5 0 0 1 - 5 0 M

Bulk part number:
Refers to the bulk part.

Marking code (fuel hose and general purpose hose)

Change code (Vinyl hose)

Indicates number mark or change sequence, however, the code for the bulk part must be strictly 0 (zero).

Types of code:

- | | | | | | |
|-------------|--|----------------|--|--------------|---|
| • Fuel hose | 2: Red outside braid
(3 mm inside dia. only) | • General hose | 1: Ash gray
2: Ash gray
3: Black
5: Black | • Vinyl hose | 1: Clear
2: Black
3: Light red
6: Light red
7: Pale black |
| | 5: Black inside braid | | | | |
| | 3: Red (3 mm inside dia. only) | | | | |
| | 4: Ash gray with red stripe
(3 mm inside dia. only) | | | | |
| | 6: Black | | | | |

Lengths:

- 001: 1 m (standard)
003: 3 m
008: 8 m } Application or specification of some parts is not settled.

I.D code: (fuel hose and general purpose hose)

- | | | | | |
|------------|--------------------|--------------------|-----------------------------|-----------------------------|
| 30: 3.0 mm | 50: 5.0 mm | 70: 7.0 mm | 11: 11 mm | 12: 12 (outside dia. 17) mm |
| 35: 3.5 mm | 55: 5.3 mm, 5.5 mm | 75: 7.3 mm, 7.5 mm | 91: 12 (outside dia. 15) mm | 14: 14 mm |
| 45: 4.5 mm | 65: 6.5 mm | 80: 8.0 mm | 92: 12 (outside dia. 16) mm | 17: 17 mm |

ID./OD. code: (vinyl hose)

- | | | | | |
|-------------------------|--------------------------|---------------------------|---------------------------|---------------------------|
| 01: ID. 2.9, OD. 6.8 mm | 12: ID. 5.0, OD. 7.0 mm | 21: ID. 8.0, OD. 9.0 mm | 37: ID. 11.0, OD. 15.0 mm | 50: ID. 16.0, OD. 19.0 mm |
| 03: ID. 3.0, OD. 6.0 mm | 10: ID. 5.0, OD. 8.0 mm | 23: ID. 8.0, OD. 12.0 mm | 38: ID. 12.0, OD. 13.0 mm | 55: ID. 17.5, OD. 20.5 mm |
| 05: ID. 3.5, OD. 6.5 mm | 11: ID. 5.0, OD. 9.0 mm | 25: ID. 9.0, OD. 11.0 mm | 39: ID. 12.0, OD. 14.0 mm | 60: ID. 22.0, OD. 27.0 mm |
| 07: ID. 4.0, OD. 7.0 mm | 14: ID. 6.0, OD. 9.0 mm | 27: ID. 9.0, OD. 13.0 mm | 40: ID. 12.0, OD. 16.0 mm | |
| 08: ID. 4.5, OD. 6.5 mm | 17: ID. 7.0, OD. 9.0 mm | 33: ID. 10.0, OD. 14.0 mm | 43: ID. 13.0, OD. 15.0 mm | |
| 09: ID. 4.5, OD. 8.0 mm | 19: ID. 7.0, OD. 11.0 mm | 36: ID. 11.0, OD. 13.0 mm | 45: ID. 14.0, OD. 18.0 mm | |

Hose type:

- 1: Fuel hose
3: Vinyl hose
5: General hose

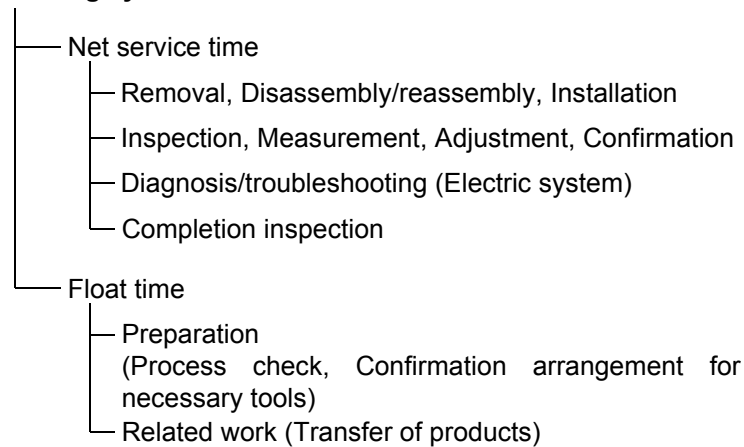
⊙ **CAUTION: It is DANGEROUS to confuse the fuel hose with the general purpose hose or vinyl hose.**

Never use a general purpose hose or vinyl hose in place of a fuel hose or vice versa. Always use the correct bulk part in the parts catalogue, according to the service manual or the instructions issued with the bulk part.

FLAT RATE SERVICE TIME

Flat rate service time (FRT) means the standard time required to service a product, which is listed in this manual to help the dealers control the actual working process and calculate the service charge by using it as a guide.

FRT setting system



* Float time is set by multiplying the net service time by a given coefficient.

Editorial style

The service items shown in the text are listed with the exchange work time for the repair sales parts as the subject. Other representative service items not using repair parts (removal/installation, adjustment, inspection/measuring, and other work) are listed collectively in the list in the preface, classified according to the work.

FRT setting standard

- Decimal system (in unit of 0.1) is adopted to set FRT as it is convenient to calculate the wage.
Example: (0.1) → 6 minutes, (0.2) → 12 minutes
[Labor cost per hour] x [FRT] = [Wage]
- FRT is set with a hand tool.
- Service items and FRT can be subject to change depending on development of tools and service equipment and improvement in service procedure.

Work procedure

- As the work procedure is set with the work time according to the method in the separate Service Manual, refer to this Manual as required.
- Work methods permitting servicing in the shortest time still permitting assurance of safe work and product warranty are used for the setting of service items not listed in the Service Manual.
- Work basically is to be performed by one person, and when two or more people are required, setting is done as the total time for the number of people.
- The set value for the technological level of the workers uses a person with three years of experience in the repair of Honda products as the standard.
- Special tools and service equipment used to set FRT are those specified or recommended in Service Manual.

Service item whose FRT is not presented

- Accessories and service parts that are not listed to use in this manual.
 - Locations with little aging deterioration or breakage during normal use.
 - Service work that can be finished by one touch.
 - Service work that is seldom done (i.e. extremely small causes of trouble and service frequency).
 - Products and parts whose location for installation differs according to its status of use and application.
- * When FRT is not presented, please calculate wages based on appropriate actual work time.

Operation not included of FRT

- Oil and coolant water draining, Waiting time for warming up operation and etc..
- Additional operation that involves removal/installation of standard exterior equipment.
- Indirect time spent for service by visiting the customer, trade-in, and delivery.
- Indirect time required for ordering and delivery of parts.
- Cost for grease, adhesive agent, etc. used for service work.

**Explanation of FRT by using an example
(The example may differ from the actual presented items)**

Ref. No.	L.O.N.	(Relative ref. Number) Description	F.R.T.
①	1111L1	(1, 3, 4, 7) VALVE, INTAKE4.1	②
③	1111L1A	• NOTE: OHV type • Includes: Engine removal and installation	⑦
		One head (intake all) add1.4	⑤

- ① Reference No. of the illustration of part that shows location of the replacement work.
- ② FRT is an abbreviation of Flat Rate Time indicating the standard service time required for the replacement.
- ③ LON is an abbreviation of Labor Operation Number, and it is a classification of the service items by the work unit code.

The same operation code is used regardless of the models.

Standard operation is indicated with 6 digits code, and additional operation is indicated with 7 digits code.

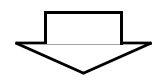
- ④ Indicating the intake valve replacement and FRT4.1.
- ⑤ Indicating FRT1.4 that will be added when additional operation (whole intake side of one cylinder head) is done in association with intake valve replacement.

- ⑥ Indicating work condition or application condition of the service item.
- ⑦ Indicating work contents that are included in the service item.
- ⑧ Indicating a reference No. whose operation and time are the same as FRT4.1 for the intake valve.

(The application range is limited to the service items without an LON setting within a same block.)

**How to refer to the service item by using the sample
(intake valve replacement)**

Open to the page of the block where the intake valve's spare part illustration is shown.



Look for the intake valve illustration, and refer to the service item and FRT that agree with the reference No.

Indication mark for the listing of service items that continues to the following page

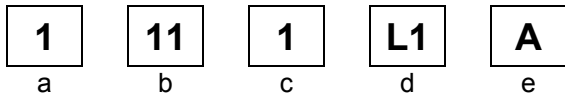
Ref. No.	L.O.N.	(Relative ref. Number) Description	F.R.T.
2	1111L1	VALVE, INTAKE	4.1
	.	.	.
	.	.	.

+
Mark indicated at the last line.

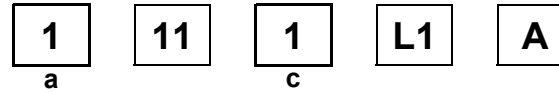
Indication of the block with no setting of FRT

Ref. No.	L.O.N.	(Relative ref. Number) Description	F.R.T.
NO INFORMATION			

• LON code system



- a) Category code..... Engine
- b) Location/function code Engine upper
- c) Operation code..... Replace
- d) Operation sequence number (Unit code can be shown with alphabet)
..... Intake valve
(No regular rule of code)
- e) Additional code One head (intake all)
(No regular rule of code)



a) Category codes and classification

Code	Category
1	Engine
2	Power drive
3	Fuel & Exhaust
4	Frame & Body
5	Steering
6	Electrical
7	Axle & Brake
8	Control system
9	-
0	Attachments

c) Operation codes and classification

Code	Operation category
1	Replace, Removal/Installation, Change
2	Overhaul
3	Adjust, Rotation
4	(Paint-related work: Top-coat)
5	Test, Inspect/diagnose, Measurement
6	(Overhaul-related work: Rebore)
7	(Overhaul-related work: Reseal)
8	(Resurface)
9	(Paint-related work: Refinish)
0	Repair, Cleaning, Air bleeding

Major service items without using spare parts

(1) Removal/Installation, (2) Adjustment, (3) Inspection/Measurement, (4) Overhaul, (5) Other work

E: Engine, T: Transmission, D: Drive system, B: Body and related parts

(2) Adjustment

	LON	DESCRIPTION	FRT
E	1113A1	VALVE CLEARANCE-ADJUSTMENT NOTE: For 1 product	0.3
	1163A0	CONTROL, THROTTLE/GOVERNOR-ADJUSTMENT	0.2
	3113A2	CARBURETOR IDLE-ADJUSTMENT	0.2

(3) Inspection, Measurement, Cleaning

	LON	DESCRIPTION	FRT
E	1105A0	ENGINE OIL-INSPECTION	0.1
	3120A0	AIR CLEANER-CLEANING INCLUDES: Air cleaner-inspection	0.1
	3130A0	SPARK ARRESTER-CLEANING	0.2
	6140A0	SPARK PLUG-ADJUSTMENT/CLEANING NOTE: For 1 product	0.1

(4) Overhaul

Work condition: The required Measurements, inspections, adjustments, and cleaning/washing of each part are performed, including the main body removal/installation work and the replacement of defective parts.

	LON	DESCRIPTION	FRT
E	3112A0	CARBURETOR-OVERHAUL INCLUDES: All necessary adjustment	0.4

(5) Other work

	LON	DESCRIPTION	FRT
E	1101E1	ENGINE OIL-CHANGE INCLUDES: Engine oil-inspection	0.2

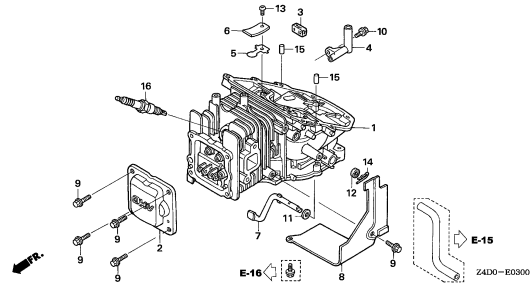
ENGINE GROUP

B13

E-3

CYLINDER BARREL

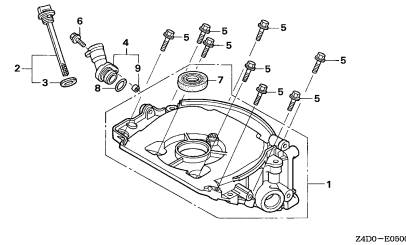
C 1



E-5

OIL CASE

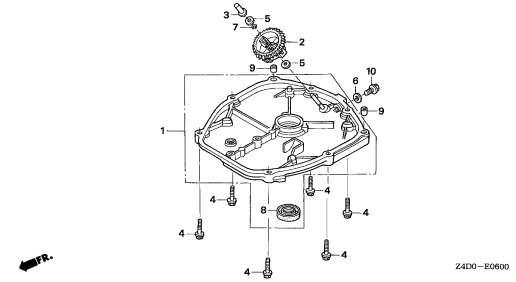
C 2



E-6

CRANKCASE SIDE COVER

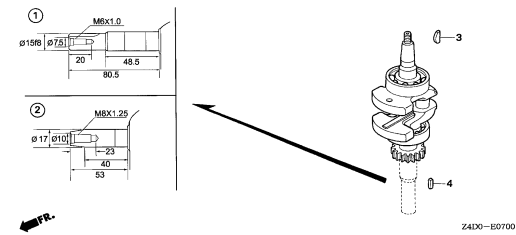
C 3



E-7

CRANKSHAFT

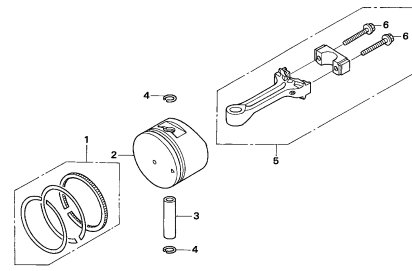
C 4



E-8

PISTON/CONNECTING ROD

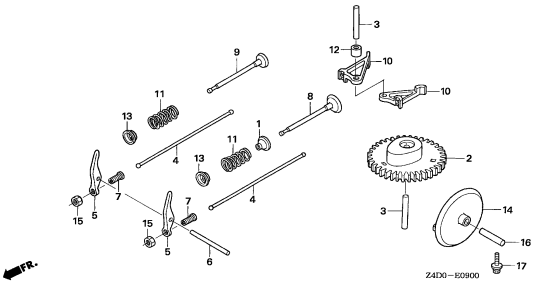
C 5



E-9

CAMSHAFT

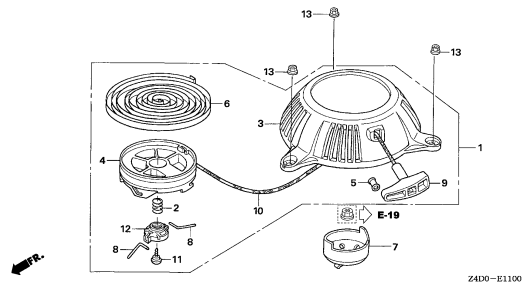
C 6



E-11

RECOIL STARTER

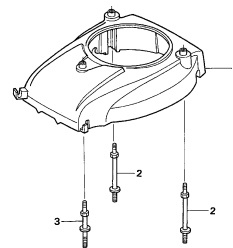
C 9



E-12

FAN COVER

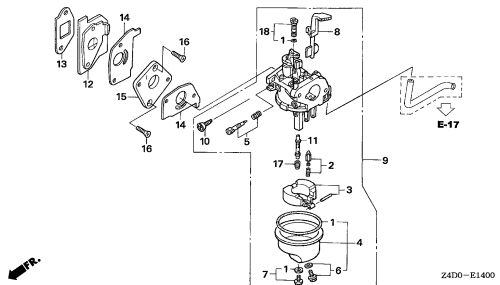
C10



E-14

CARBURETOR

C11



2

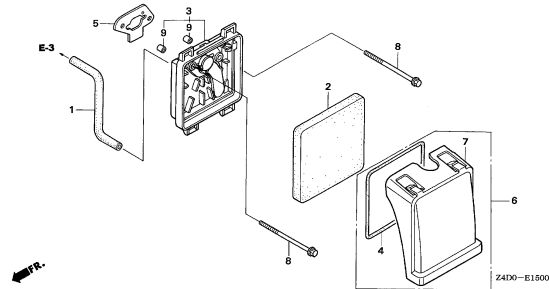
ENGINE GROUP

B14

E-15

AIR CLEANER

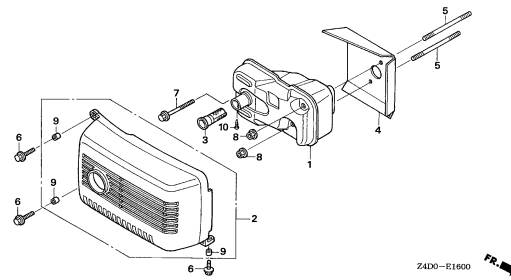
C12



E-16

MUFFLER

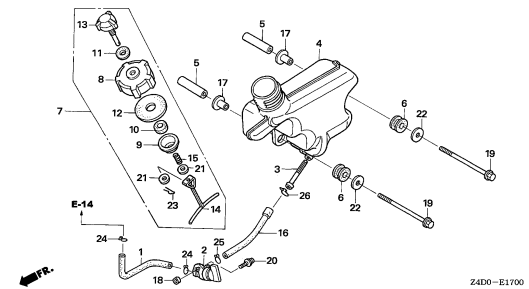
C13



E-17

FUEL TANK

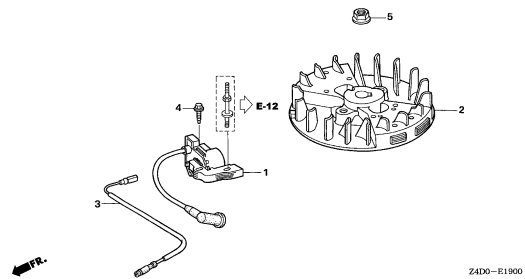
C14



E-19

FLYWHEEL/IGNITION COIL

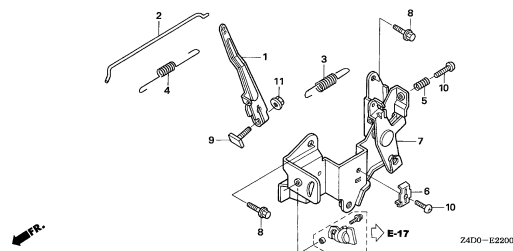
C15



E-22

CONTROL

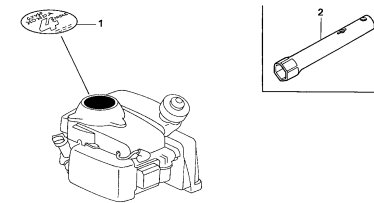
C16



E-28

LABEL/TOOL

D 1

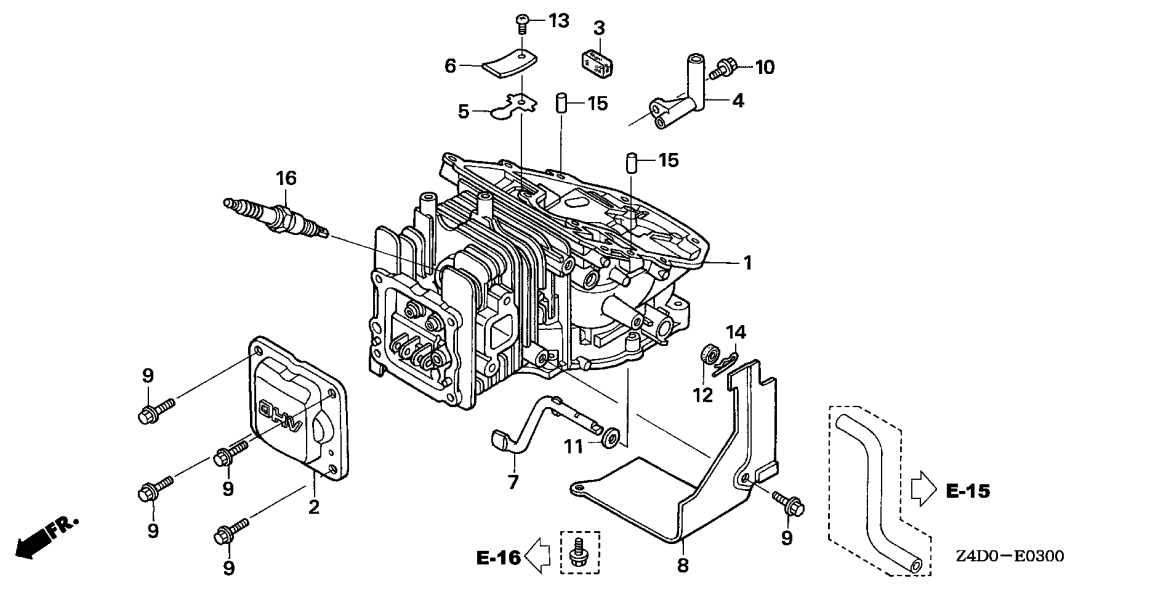


2

E-3

CYLINDER BARREL

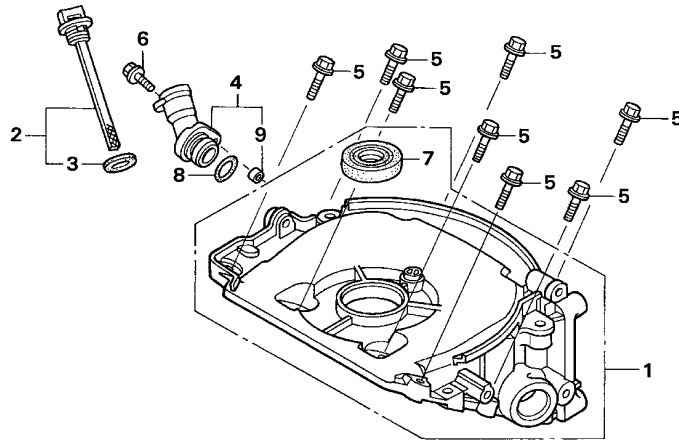
C 1



Ref. No.	L.O.N.	(Relative ref. Number) Description	F.R.T.
1	1101A0	BARREL, CYLINDER	1.7
2	1111D5	COVER, CYLINDER HEAD AND/OR PACKING, HEAD COVER	0.2
3	1111E5	FILTER, BREATHER	0.7
4	1111G1	PIPE, BREATHER	0.6
5		(6)	
	1171A8	VALVE, OIL OUTLET	0.7
7	1161B4	SHAFT, GOVERNOR ARM	1.2
8	4141E3	SHROUD, ENGINE	0.2
12	1101C4	OIL SEAL, GOVERNOR ARM SHAFT ..	1.2
16	6141C1	PLUG, SPARK	0.1

Ref. No.	Part No.	Description	Reqd. QTY	Serial No.	Parts catalogue code
			GXV 50 U		
1	12100-ZM7-417	BARREL COMP., CYLINDER	1		
2	12311-ZM7-010	COVER, HEAD	1		
3	12367-ZE6-010	FILTER, BREATHER	1		
4	15171-ZN4-000	PIPE, BREATHER	1		
5	15571-ZM7-003	VALVE, OIL OUTLET	1		
6	15572-ZM7-000	PLATE, STOPPER	1		
7	16541-ZM7-000	SHAFT, GOVERNOR ARM	1		
8	19631-ZM7-000	SHROUD	1		
9	90003-892-000	BOLT, FLANGE, 5X12	5		
10	90008-ZM7-000	BOLT, 4X10	1		
11	90443-ZC3-000	WASHER, 5.2X9	1		
12	91231-ZC3-003	OIL SEAL, 5X11X5	1		
13	93500-03005-0A	SCREW, PAN, 3X5	1		
14	94251-06000	PIN, LOCK, 6MM	1		
15	96220-60150	ROLLER, 6X15	2		
16	98056-54757	PLUG, SPARK (U14FSR-UB)	(1)		
	98056-54777	PLUG, SPARK (CR4HSB)	(1)		
	98056-55757	PLUG, SPARK (U16FSR-UB)	1		
	98056-55777	PLUG, SPARK (CR5HSB)	1		

2



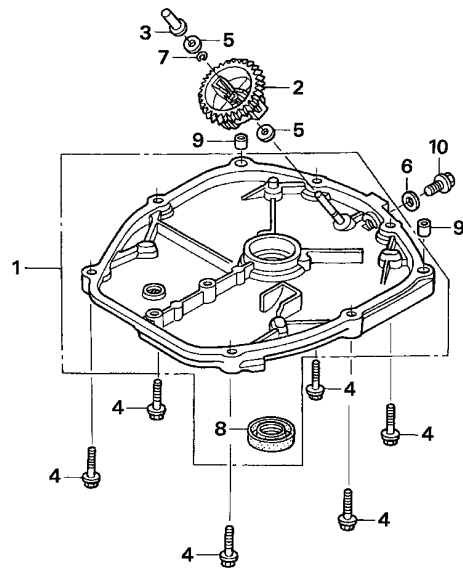
Ref. No.	L.O.N.	(Relative ref. Number) Description	F.R.T.
1	1101K5	CASE, OIL	0.8
4	1101B9	(8) EXTENSION, OIL FILLER AND/OR PACKING, EXTENSION OIL FILLER	0.1
7	1101E6	OIL SEAL, CRANKSHAFT :UPPER ..	0.8

Ref. No.	Part No.	Description	Reqd. QTY		Serial No.	Parts catalogue code
			GXV	U		
1	11300-ZN4-405	CASE ASSY., OIL	1			
2	15600-ZN4-003	CAP ASSY., OIL FILLER	1			
3	15625-ZE1-003	PACKING, OIL FILLER CAP	1			
4	15631-ZN4-000	EXTENSION, OIL FILLER	1			
5	90006-ZM7-000	BOLT, FLANGE, 5X23	8			
6	90012-896-750	BOLT, FLANGE, 5X14	1			
7	91202-HC5-003	OIL SEAL, 17X27X5 (ARAI)	1			
8	91331-PC9-003	O-RING, 21.2X2.4 (ARAI)	1			
9	91502-ZM3-000	COLLAR, TOP COVER	1			

E-6

CRANKCASE SIDE COVER

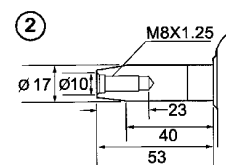
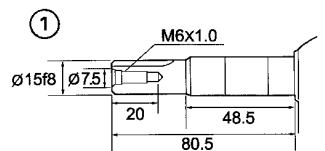
C 3



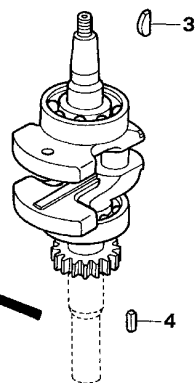
Ref. No.	L.O.N.	(Relative ref. Number) Description	F.R.T.
1	1101B3	COVER, CRANKCASE SIDE	0.5
2	1161C4	GOVERNOR ASSEMBLY	0.5
3	1161B6	SLIDER, GOVERNOR	0.4
8	1101E7	OIL SEAL, CRANKSHAFT :LOWER ..	0.4

Ref. No.	Part No.	Description	Reqd. QTY	Serial No.	Parts catalogue code
			GXV 50 U		
1	11340-ZN4-020	COVER COMP., CRANKCASE SIDE	1	-----	SA,SAR,SER,VE
	11340-ZN4-802	1	-----	VA
2	16510-ZM7-000	GOVERNOR ASSY.	1		
3	16531-ZM7-000	SLIDER, GOVERNOR	1		
4	90006-ZM7-000	BOLT, FLANGE, 5X23	6		
5	90441-ZM7-000	WASHER, 4.2X13	2		
6	90471-580-000	PACKING, 8MM	1		
7	90602-ZM7-000	CLIP, GOVERNOR HOLDER	1		
8	91202-HC5-003	OIL SEAL, 17X27X5 (ARAI)	1		
9	94301-06100	DOWEL PIN, 6X10	2		
10	95701-08012-08	BOLT, FLANGE, 8X12	1		

2



FR.



Z4D0-E0700

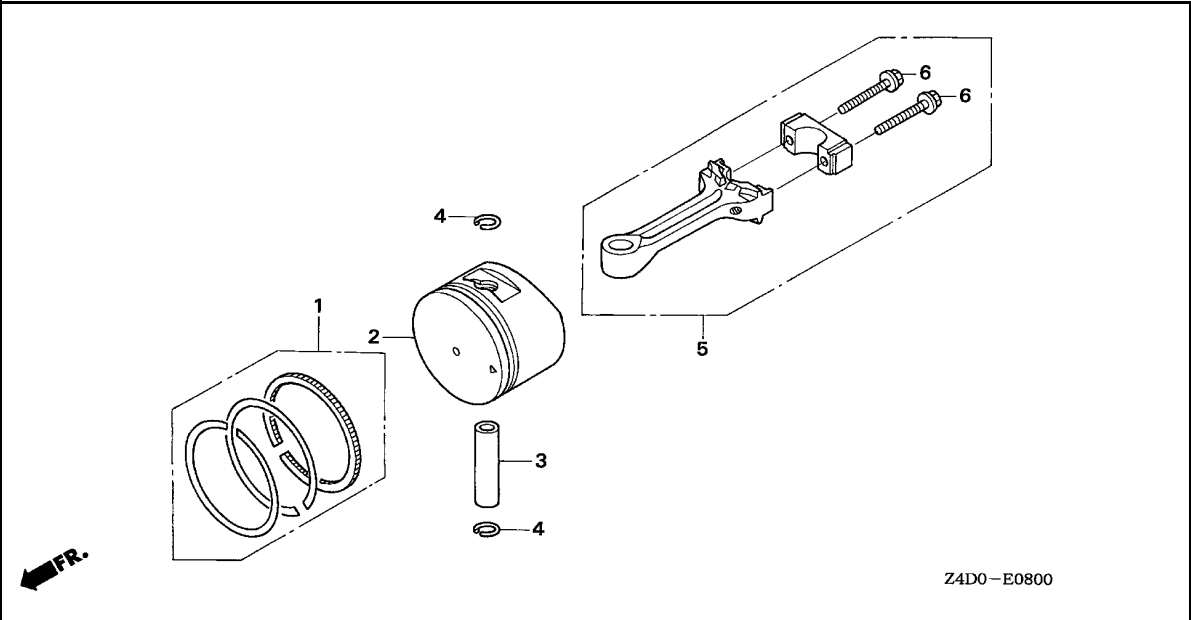
Ref. No.	L.O.N.	(Relative ref. Number) Description	F.R.T.
1		(2)	
1101F0		CRANKSHAFT	1.2

Ref. No.	Part No.	Description	Reqd. QTY	Serial No.	Parts catalogue code
			GXV 50 U		
1	13310-ZM7-000	CRANKSHAFT COMP.	1	-----	SA,SAR,SER
2	13310-ZN4-000	CRANKSHAFT COMP.	1	-----	VA,VE
3	13331-ZM7-000	KEY, SPECIAL	1	-----	
4	90741-959-000	KEY, 5MM	(1)	-----	SA,SAR,SER

E-8

PISTON/CONNECTING ROD

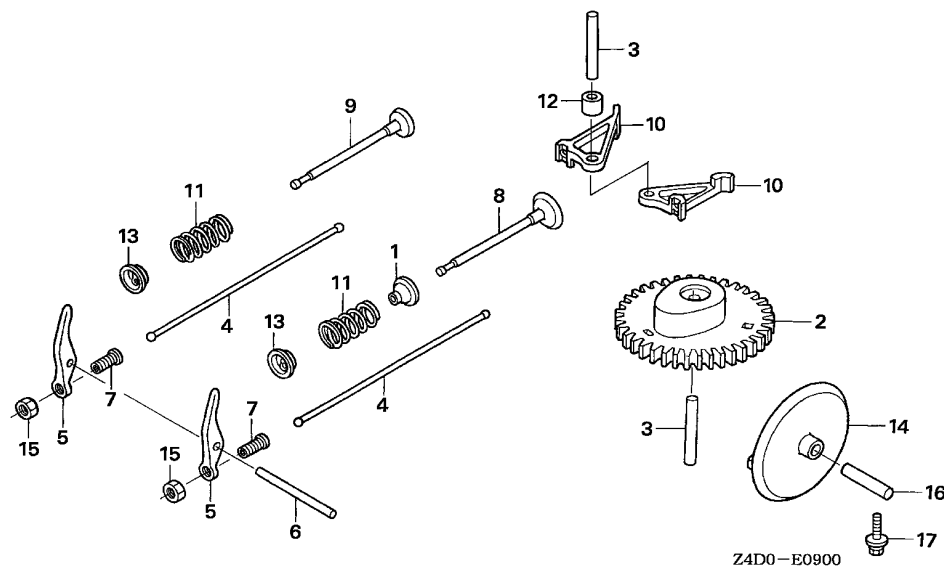
C 5



Ref. No.	L.O.N.	(Relative ref. Number) Description	F.R.T.
2		(1,3,5)	
1111R1		PISTON AND/OR RING SET AND/OR BEARING AND/OR RODINCLUDES: Inspection/ Measurement/Cleaning	1.3

Ref. No.	Part No.	Description	Reqd. QTY	Serial No.	Parts catalogue code
			GXV 50 U		
1	13010-ZM7-000	RING SET, PISTON (STD.)	1		
2	13101-ZM7-010	PISTON (STD.)	1		
3	13111-122-000	PIN, PISTON, 10X33	1		
4	13115-147-000	CLIP, PISTON PIN, 10MM	2		
5	13200-ZN4-000	ROD ASSY., CONNECTING	1		
6	90001-ZM7-000	BOLT, CONNECTING ROD	2		

2

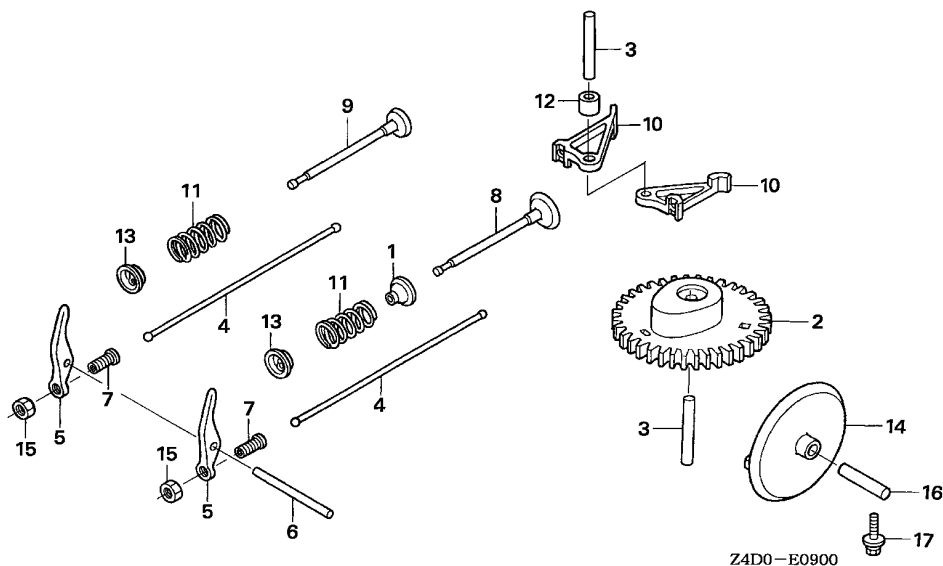


Z4D0-E0900

Ref. No.	L.O.N.	(Relative ref. Number) Description	F.R.T.
1	1111K2	SEAL, INTAKE VALVE STEMINCLUDES: Valve clearance adjustment	1.3
2	1111C2	CAMSHAFT	0.5
4	1111L6	ROD, PUSH :INTAKE	0.5
		.INCLUDES: Valve clearance adjustment	
	1111L6A	.Replace exhaust push rod add	0.1
	1111L7	ROD, PUSH :EXHAUST	0.5
		.INCLUDES: Valve clearance adjustment	
	1111L7A	.Replace intake push rod add	0.1
5	1111A2	ARM, ROCKER :INTAKE	0.4
		.INCLUDES: Valve clearance adjustment	
	1111A2A	.Replace exhaust rocker arm add	0.1
	1111A1	ARM, ROCKER :EXHAUST	0.4
		.INCLUDES: Valve clearance adjustment	
	1111A1A	.Replace intake rocker arm add	0.1
+ 8	1111L1	VALVE, INTAKE	1.4

Ref. No.	Part No.	Description	Reqd. QTY	Serial No.	Parts catalogue code
			GXV 50 U		
1	12209-ZM7-003	SEAL, VALVE STEM	1		
2	14100-ZM7-010	CAMSHAFT ASSY.	1		
3	14126-Z0G-003	ROLLER (5X29.8)	2		
4	14410-ZM7-000	ROD, PUSH	2		
5	14431-ZM7-000	ARM, VALVE ROCKER	2		
6	14435-ZM7-003	ROLLER (4X37.8)	1		
7	14451-ZM7-000	PIVOT, ROCKER ARM	2		
8	14711-ZM7-000	VALVE, IN.	1		
9	14721-ZM7-000	VALVE, EX.	1		
10	14731-ZM7-013	LIFTER, VALVE	2		
11	14751-ZM7-000	SPRING, VALVE	2		
12	14754-ZM7-000	COLLAR, LIFTER	1		
13	14771-ZM3-010	RETAINER, VALVE SPRING	2		
14	15361-ZN4-000	SLINGER, OIL	1		
15	90206-KM3-000	NUT, TAPPET ADJUSTING	2		
16	91151-VB5-800	ROLLER, 6X25	1		
17	93404-05016-08	BOLT-WASHER, 5X16	1		

←FR.



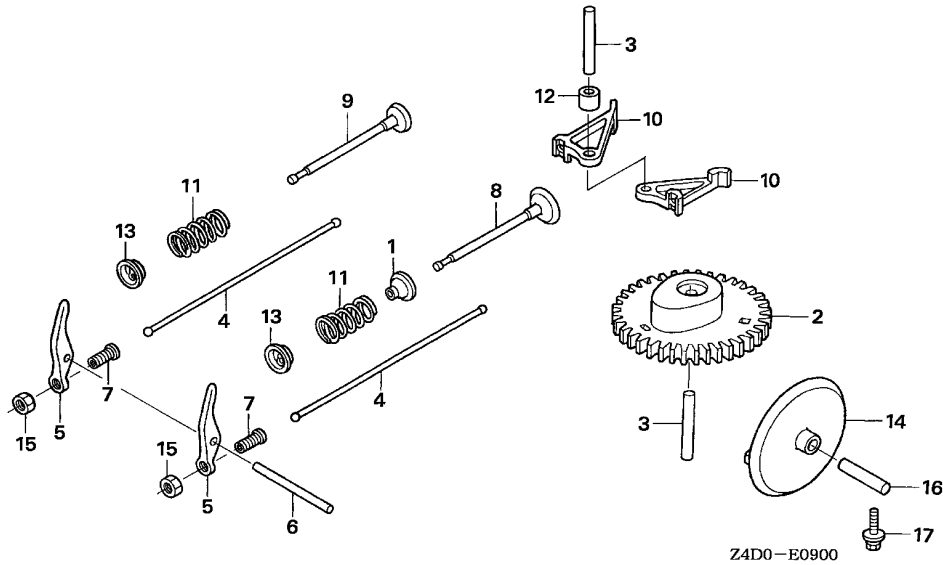
Ref. No.	L.O.N.	(Relative ref. Number) Description	F.R.T.
+ 8		.INCLUDES: Valve clearance adjustment and reface	
1111L1E		.Replace intake and exhaust all add	0.1
9 1111L0		VALVE, EXHAUST	1.4
		.INCLUDES: Valve clearance adjustment and reface	
1111L0E		.Replace intake and exhaust all add	0.1
10 1111L9		LIFTER, VALVE :INTAKE	0.5
		.NOTE: Same time for two units	
		.INCLUDES: Valve clearance adjustment	
1111M0		LIFTER, VALVE :EXHAUST	0.5
		.NOTE: Same time for two units	
		.INCLUDES: Valve clearance adjustment	
11 1111P3		SPRING, VALVE :INTAKE	1.3
		.INCLUDES: Valve clearance adjustment	
1111P3A		.Replace intake and exhaust all add	0.1
1111P4		SPRING, VALVE :EXHAUST	1.3
		.INCLUDES: Valve clearance adjustment	
+			

2

E-9

CAMSHAFT

C 8

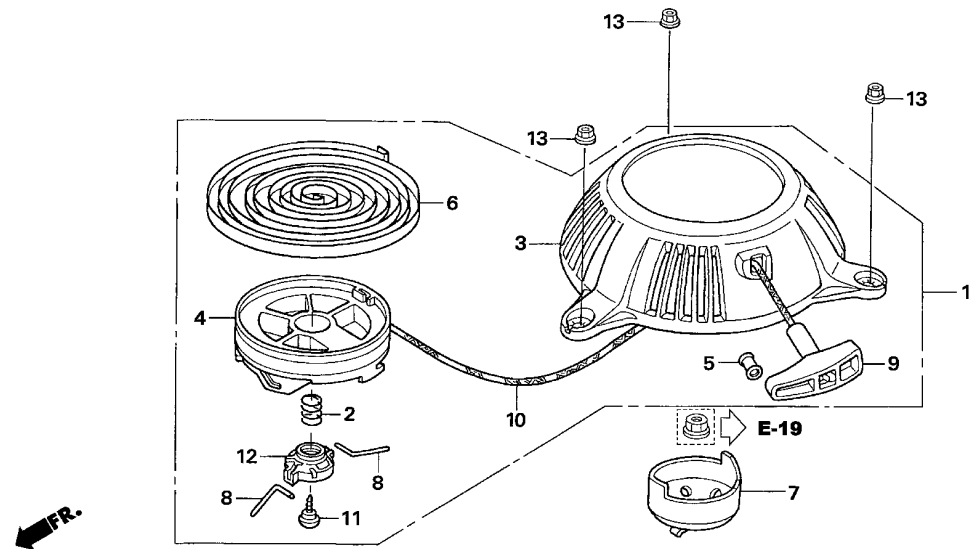


Z4D0-E0900

Ref. No.	L.O.N. (Relative ref. Number)	Description	F.R.T.
+11	1111P4A	.Replace intake and exhaust all add	0.1
14	1101K6	SLINGER, ENGINE OIL	0.5

2

FR.

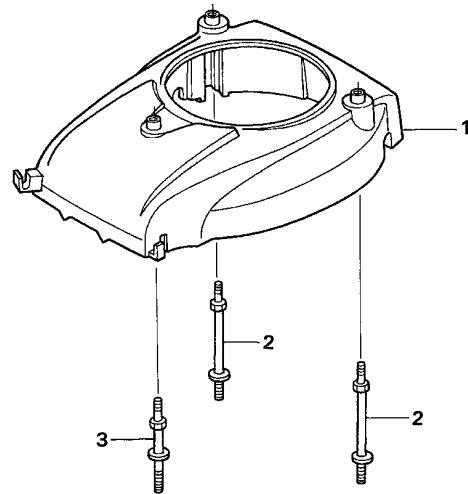


Z4D0-E1100

Ref. No.	L.O.N.	(Relative ref. Number) Description	F.R.T.
1	1121B9	STARTER, RECOIL	0.1
4	1121B1	REEL, RECOIL STARTER	0.3
6	1121B7	SPRING, RECOIL STARTER RETURN	0.3
7	1121A9	PULLEY, RECOIL STARTER	0.2
8		(2,12)	
	1121D3	ARM, RECOIL STARTER SWING	0.2
10	1121B3	ROPE, RECOIL STARTER	0.3

Ref. No.	Part No.	Description	Reqd. QTY	Serial No.	Parts catalogue code
			GXV 50 U		
1	28400-ZM7-003	STARTER ASSY., RECOIL	1		
2	28404-968-004	SPRING, FRICTION	1		
3	28414-ZM7-003	CASE, RECOIL STARTER	1		
4	28421-ZM7-003	REEL, RECOIL STARTER	1		
5	28433-ZM3-003	GUIDE, ROPE	1		
6	28442-ZL8-003	SPRING, RECOIL STARTER	1		
7	28451-ZM7-003	PULLEY, RECOIL STARTER	1		
8	28459-ZM7-003	ARM, SWING	2		
9	28461-ZM3-003	KNOB, RECOIL STARTER	1		
10	28462-ZM7-003	ROPE, RECOIL STARTER	1		
11	90012-ZM3-003	SCREW, SETTING	1		
12	91504-ZM7-003	COLLAR	1		
13	94050-05000	NUT, FLANGE, 5MM	3		





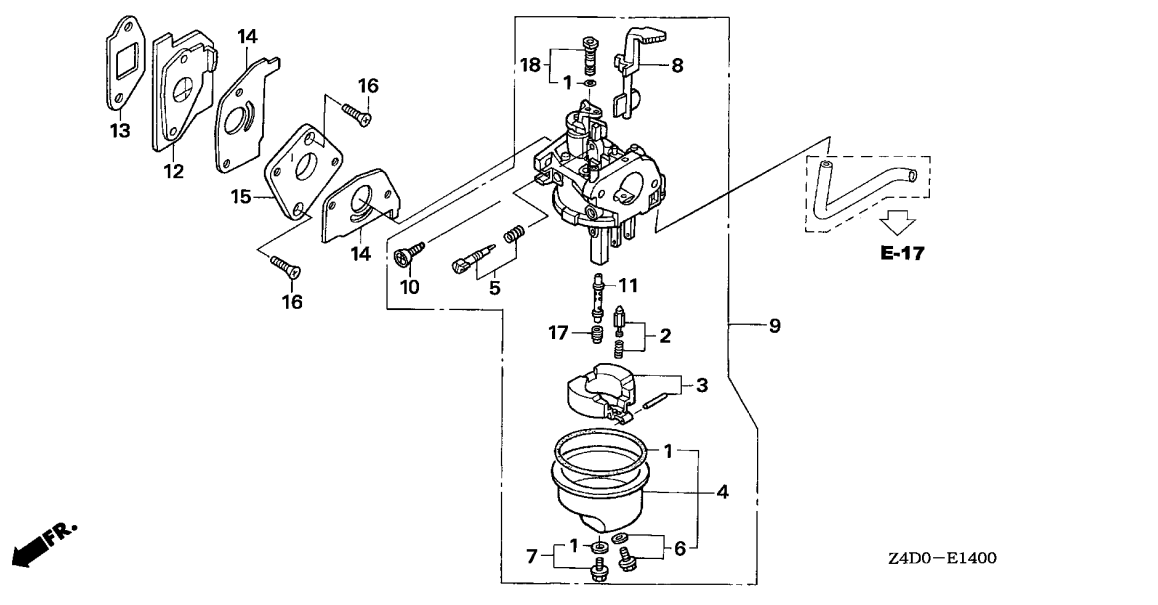
Ref. No.	L.O.N. (Relative ref. Number)	Description	F.R.T.
1	1141G8	COVER, ENGINE COOLING FAN	0.2

Ref. No.	Part No.	Description	Reqd. QTY	Serial No.	Parts catalogue code
1	19610-ZM7-000ZC	COVER COMP., FAN *R280*.....POWER RED	1		
2	90042-ZM7-000	BOLT, STUD (A)	2		
3	90043-ZM7-000	BOLT, STUD (B)	1		

E-14

CARBURETOR

C11



Ref. No.	L.O.N.	(Relative ref. Number) Description	F.R.T.
1	3111B1	GASKET SET, CARBURETOR	0.4
2	3111E1	VALVE SET, FLOAT AND/OR FLOAT SET	0.3
4	3111A3	CHAMBER SET, FLOAT AND/OR GASKET, FLOAT CHAMBER	0.2
5	3111D7	SCREW SET, PILOT	0.2
8	8101C5	CHOKE SET, CARBURETOR	0.2
9	3111F3	CARBURETOR	0.2
12	3111C0	INSULATOR, CARBURETOR AND/OR PACKING, INSULATOR	0.2
14	3111C8	PACKING, CARBURETOR	0.2
15	3111H5	PLATE, CARBURETOR JOINT	0.2
17	3111C3	JET, MAIN	0.3

FR.

Z4D0-E1400

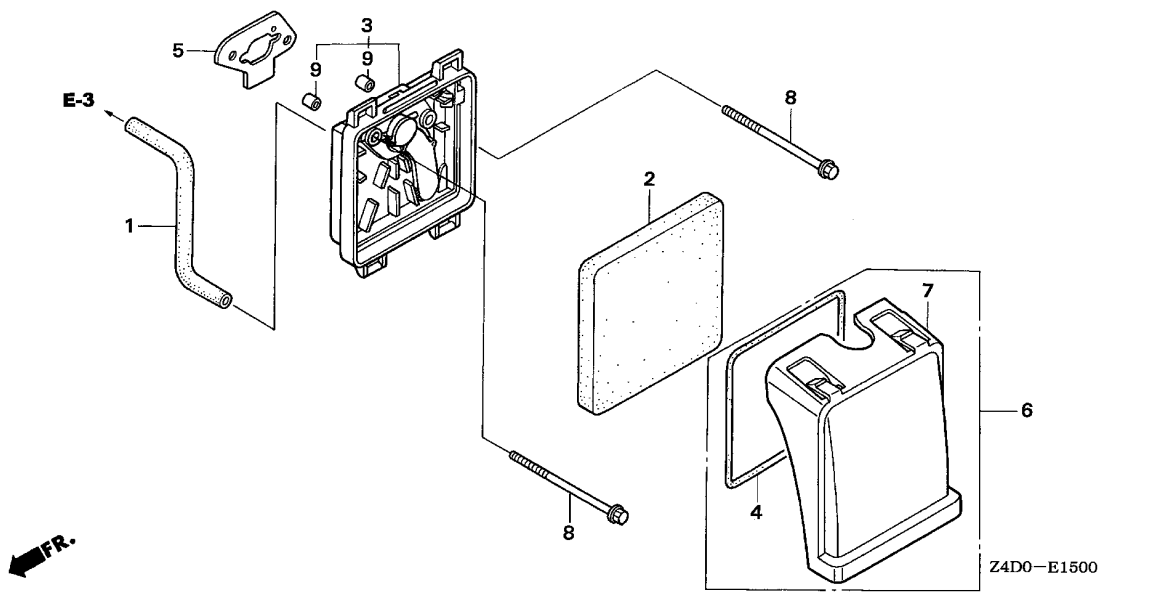
Ref. No.	Part No.	Description	Reqd. QTY	Serial No.	Parts catalogue code
			GXV 50 U		
1	16010-ZG2-D10	GASKET SET	1		
2	16011-ZE0-005	VALVE SET, FLOAT	1		
3	16013-ZG0-811	FLOAT SET	1		
4	16015-ZG0-811	CHAMBER SET, FLOAT	1		
5	16016-ZH7-W01	SCREW SET, PILOT	1		
6	16024-ZE1-811	SCREW SET, DRAIN	1		
7	16028-ZG0-811	SCREW SET	1		
8	16044-ZM7-003	CHOKE SET	1		
9	16100-ZN4-804	CARBURETOR ASSY. (BF31D D)	1		
10	16124-ZE0-005	SCREW, THROTTLE STOP	1		
11	16166-ZN4-801	NOZZLE, MAIN	1		
12	16211-ZN4-000	INSULATOR, CARBURETOR	1		
13	16212-ZM7-000	PACKING, INSULATOR	1		
14	16221-ZG0-801	PACKING, CARBURETOR	2		
15	16225-ZN4-000	PLATE, CARBURETOR JOINT	1		
16	93600-05020-0A	SCREW, FLAT, 5X20	2		
17	99101-ZG0-0480	JET, MAIN, #48	(1)		
	99101-ZG0-0500	JET, MAIN, #50	(1)		
	99101-ZG0-0520	JET, MAIN, #52	1		
18	99204-ZE2-0350	JET SET, PILOT, #35	1		

2

E-15

AIR CLEANER

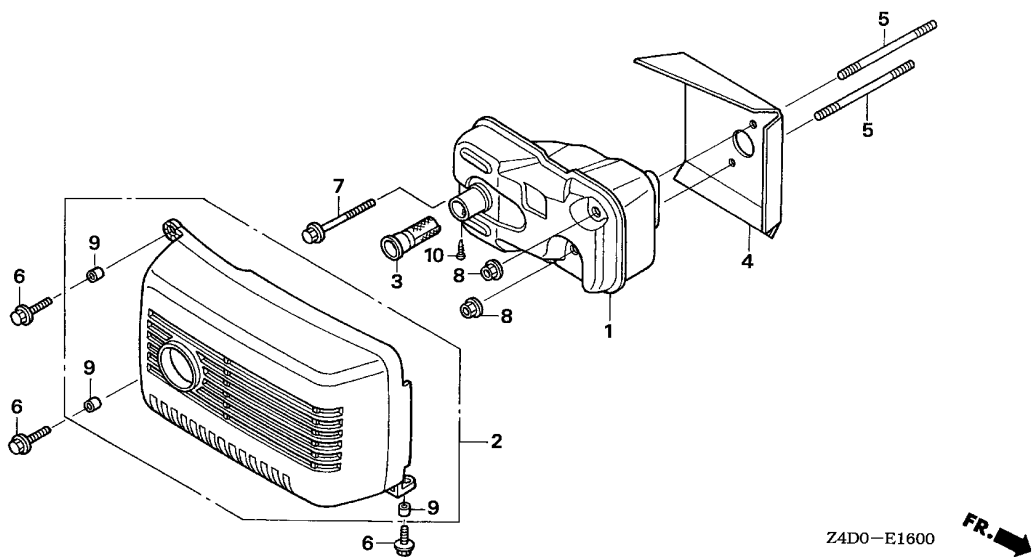
C12



Ref. No.	L.O.N.	(Relative ref. Number) Description	F.R.T.
1	1111K5	TUBE, BREATHER	0.1
2	3121B8	ELEMENT, AIR CLEANER	0.1
3	3121A5	CASE, AIR CLEANER	0.1
4	3121E9	SEAL, AIR CLEANER COVER	0.1
5	3121D9	PACKING, AIR CLEANER	0.1

2

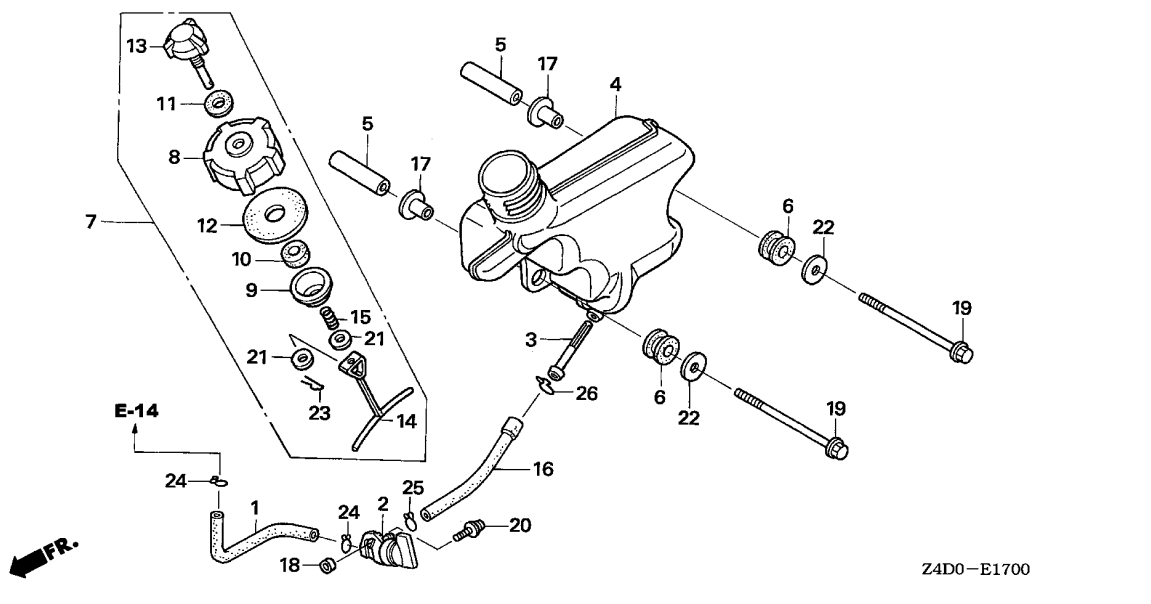
Ref. No.	Part No.	Description	Reqd. QTY	Serial No.	Parts catalogue code
			GXV 50 U		
1	15721-ZN4-000	TUBE, BREATHER	1		
2	17211-ZM7-000	ELEMENT, AIR CLEANER	1		
3	17220-ZM7-000	CASE COMP., AIR CLEANER	1		
4	17227-ZM7-000	SEAL, AIR CLEANER	1		
5	17228-ZM7-000	PACKING, AIR CLEANER	1		
6	17230-ZM7-000	COVER COMP., AIR CLEANER	1		
7	17231-ZM7-000	COVER, AIR CLEANER	1		
8	90004-ZN4-000	BOLT, FLANGE, 5X65	2		
9	91503-ZM7-000	COLLAR, AIR CLEANER	2		



Ref. No.	L.O.N.	(Relative ref. Number) Description	F.R.T.
1	3131C5	MUFFLER, EXHAUST	0.2
2	3131D6	PROTECTOR, EXHAUST MUFFLER ...	0.1
3	3131A1	ARRESTER, SPARK	0.2
4	3131B6	GUIDE, AIR EXHAUST	0.2

Ref. No.	Part No.	Description	Reqd. QTY	Serial No.	Parts catalogue code
1	18310-ZM7-003	MUFFLER COMP.	1	-----	SA,VA,VE
	18310-ZM7-801	1	-----	SAR,SER
2	18320-ZM7-000	PROTECTOR COMP., MUFFLER ...	1	-----	
3	18350-ZM7-801	ARRESTER COMP., SPARK	1	-----	SAR,SER
			(1)	-----	SA,VA,VE
4	18515-ZM7-000	GUIDE, AIR	1	-----	
5	90002-ZM7-000	BOLT, STUD, 2,5X55	2	-----	
6	90012-892-000	BOLT, FLANGE, 5X16	3	-----	
7	90103-P4V-010	BOLT, FLANGE, 5X35	1	-----	
8	90136-SM4-901	NUT, SELF-LOCK, 5MM	2	-----	
9	91502-ZM3-000	COLLAR, TOP COVER	3	-----	
10	93903-24110	SCREW, TAPPING, 4X8	1	-----	SAR,SER
			(1)	-----	SA,VA,VE





Ref. No.	L.O.N.	(Relative ref. Number) Description	F.R.T.
1	3101F7	TUBE B, FUEL	0.1
2	3101A3	COCK, FUEL	0.1
3	3101H6	JOINT, FUEL STRAINER	0.1
4	3101H7	TANK, FUEL	0.1
6	3101M3	RUBBER A, TANK MOUNTING	0.1
16	3101F1	TUBE, FUEL TANK	0.1

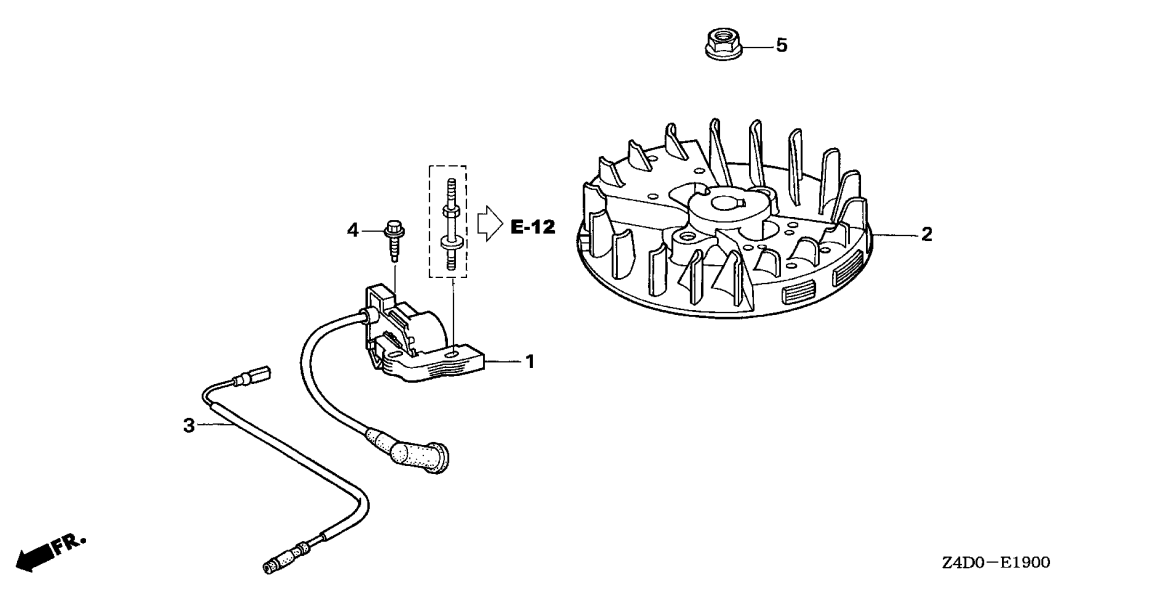
Z4D0-E1700

Ref. No.	Part No.	Description	Reqd. QTY	Serial No.	Parts catalogue code
			GXV 50 U		
1	16861-ZN4-800	TUBE B, FUEL	1		
2	16950-ZM0-003	COCK ASSY., FUEL	1		
3	16952-ZE6-000	STRAINER, FUEL	1		
4	17510-ZN4-000	TANK COMP., FUEL	1		
5	17517-ZN4-000	COLLAR, TANK SETTING	2		
6	17532-ZM7-000	RUBBER A, TANK MOUNTING	2		
7	17620-ZV0-020	CAP ASSY., FUEL TANK	1		
8	17621-ZV0-020	BODY, FUEL CAP	1		
9	17622-ZV0-000	INNER, FUEL CAP	1		
10	17623-ZV0-000	SPONGE, FUEL CAP BREATHER	1		
11	17624-ZV0-000	PACKING, VALVE	1		
12	17625-ZV0-000	PACKING, FUEL CAP	1		
13	17626-ZV0-010	VALVE COMP., BREATHER	1		
14	17628-ZV0-000	LINK, FUEL CAP	1		
15	17629-ZV0-000	SPRING, FUEL CAP	1		
16	17701-ZN4-800	TUBE, FUEL TANK	1		
17	19052-MB4-880	COLLAR, CANISTER MOUNTING	2		
18	33609-GK4-620	COLLAR, FR. WINKER	1		
19	90015-ZG0-801	BOLT, FLANGE, 6X65	2		
20	93891-05010-08	SCREW-WASHER, 5X10	1		
21	94101-04200	WASHER, PLAIN, 4MM	2		
22	94103-06800	WASHER, PLAIN, 6MM	2		
23	94251-04000	PIN, LOCK, 4MM	1		
24	95002-02080	CLIP, TUBE (B8)	2		
25	95002-02100	CLIP, TUBE (B10)	1		
26	95002-02130	CLIP, TUBE (B12.5)	1		

E-19

FLYWHEEL/IGNITION COIL

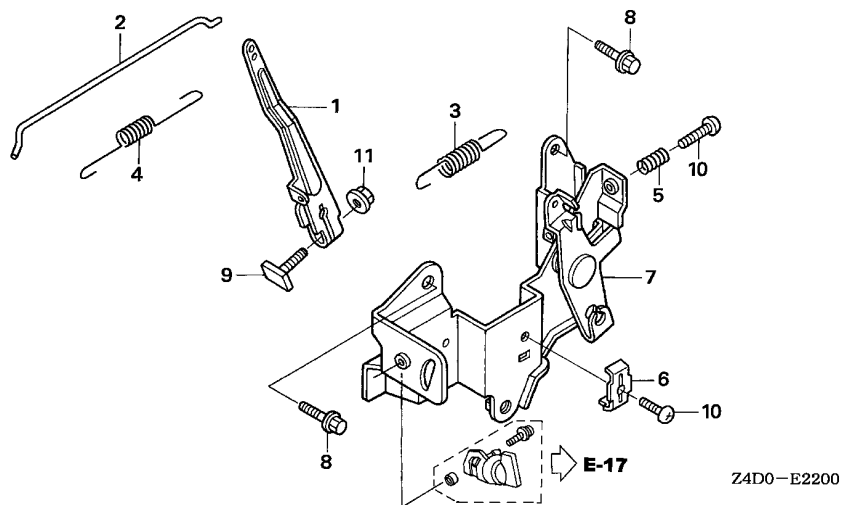
C15



Ref. No.	L.O.N.	(Relative ref. Number) Description	F.R.T.
1	6141A5	COIL, IGNITION(ONE)	0.2
2	2161B5	FLYWHEEL	0.3
3	6111B3	CORD, STOP SWITCH	0.1

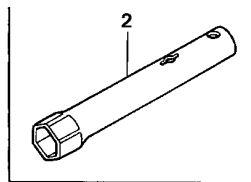
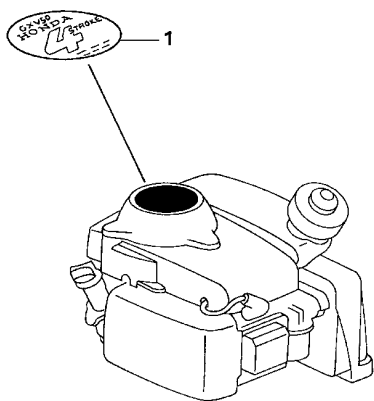
Ref. No.	Part No.	Description	Reqd. QTY	Serial No.	Parts catalogue code
			GXV 50 U		
1	30500-ZM7-004	COIL ASSY., IGNITION	1		
2	31110-ZM7-004	FLYWHEEL COMP.	1		
3	32195-ZN4-000	CORD, STOP SWITCH	1		
4	90004-ZC3-000	BOLT, FLANGE, 5X20	1		
5	94050-10000	NUT, FLANGE, 10MM	1		

2



Ref. No.	L.O.N.	(Relative ref. Number) Description	F.R.T.
1	1161A0	ARM, GOVERNOR	0.2
2	1161B1	ROD, GOVERNOR	0.2
3	1161C5	SPRING, GOVERNOR	0.1
4	1161C2	SPRING, THROTTLE RETURN	0.2
7	1161A2	BASE, CONTROL	0.2

Ref. No.	Part No.	Description	Reqd. QTY	Serial No.	Parts catalogue code
			GXV 50 U		
1	16551-ZN4-000	ARM, GOVERNOR	1		
2	16555-ZN4-000	ROD, GOVERNOR	1		
3	16561-ZN4-000	SPRING, GOVERNOR	1		
4	16562-ZN4-800	SPRING, THROTTLE RETURN	1		
5	16571-892-000	SPRING, CONTROL ADJUSTING	1		
6	16576-891-000	HOLDER, CABLE	1		
7	16580-ZN4-000	BASE COMP., CONTROL	1		
8	90003-892-000	BOLT, FLANGE, 5X12	2		
9	90015-ZE5-010	BOLT, GOVERNOR ARM	1		
10	93500-05020-OH	SCREW, PAN, 5X20	2		
11	94050-06000	NUT, FLANGE, 6MM	1		



Z4D0-E2800

Ref. No.	L.O.N.	(Relative ref. Number)	Description	F.R.T.
----------	--------	------------------------	-------------	--------

NO INFORMATION

Ref. No.	Part No.	Description	Reqd. QTY	Serial No.	Parts catalogue code
1	87521-ZN4-010	EMBLEM	1		
2	89216-130-690	WRENCH, SPARK PLUG	(1)		



PART NO. INDEX

E 1

Part Number	Address	Page	Ref.	Part Number	Address	Page	Ref.	Part Number	Address	Page	Ref.	Part Number	Address	Page	Ref.
11000				16044-ZM7-003	C11	25	8	28000				90443-ZC3-000	C1	15	11
11300-ZN4-405	C2	16	1	16100-ZN4-804	C11	25	9					90471-580-000	C3	17	6
11340-ZN4-020	C3	17	1	16124-ZE0-005	C11	25	10	28400-ZM7-003	C9	23	1	90602-ZM7-000	C3	17	7
11340-ZN4-802	C3	17	1	16166-ZN4-801	C11	25	11	28404-968-004	C9	23	2	90741-959-000	C4	18	4
				16211-ZN4-000	C11	25	12	28414-ZM7-003	C9	23	3				
				16212-ZM7-000	C11	25	13	28421-ZM7-003	C9	23	4	91000			
12000				16221-ZG0-801	C11	25	14	28433-ZM3-003	C9	23	5				
12100-ZM7-417	C1	15	1	16225-ZN4-000	C11	25	15	28442-ZL8-003	C9	23	6	91151-VB5-800	C6	20	16
12209-ZM7-003	C6	20	1	16510-ZM7-000	C3	17	2	28451-ZM7-003	C9	23	7	91202-HC5-003	C2	16	7
12311-ZM7-010	C1	15	2	16531-ZM7-000	C3	17	3	28459-ZM7-003	C9	23	8				
12367-ZE6-010	C1	15	3	16541-ZM7-000	C1	15	7	28461-ZM3-003	C9	23	9	91231-ZC3-003	C1	15	12
				16551-ZN4-000	C16	30	1	28462-ZM7-003	C9	23	10	91331-PC9-003	C2	16	8
				16555-ZN4-000	C16	30	2					91502-ZM3-000	C2	16	9
				16561-ZN4-000	C16	30	3	30000					C13	27	9
				16562-ZN4-800	C16	30	4	30500-ZM7-004	C15	29	1	91503-ZM7-000	C12	26	9
13010-ZM7-000	C5	19	1	16571-892-000	C16	30	5					91504-ZM7-003	C9	23	12
13101-ZM7-010	C5	19	2	16576-891-000	C16	30	6	31000							
13111-122-000	C5	19	3	16580-ZN4-000	C16	30	7					93000			
13115-147-000	C5	19	4	16861-ZN4-800	C14	28	1	31110-ZM7-004	C15	29	2	93404-05016-08	C6	20	17
13200-ZN4-000	C5	19	5	16950-ZM0-003	C14	28	2					93500-03005-0A	C1	15	13
13310-ZM7-000	C4	18	1	16952-ZE6-000	C14	28	3	32000				93500-05020-0H	C16	30	10
13310-ZN4-000	C4	18	2					32195-ZN4-000	C15	29	3	93600-05020-0A	C11	25	16
13331-ZM7-000	C4	18	3	17000								93891-05010-08	C14	28	20
				17211-ZM7-000	C12	26	2					93903-24110	C13	27	10
				17220-ZM7-000	C12	26	3	33000							
14000				17227-ZM7-000	C12	26	4	33609-GK4-620	C14	28	18	94000			
14100-ZM7-010	C6	20	2	17228-ZM7-000	C12	26	5					94050-05000	C9	23	13
14126-ZG0-003	C6	20	3	17230-ZM7-000	C12	26	6	87000				94050-06000	C16	30	11
14410-ZM7-000	C6	20	4	17231-ZM7-000	C12	26	7					94050-10000	C15	29	5
14431-ZM7-000	C6	20	5	17510-ZN4-000	C14	28	4	87521-ZN4-010	D1	31	1	94101-04200	C14	28	21
14435-ZM7-003	C6	20	6	17517-ZN4-000	C14	28	5					94103-06800	C14	28	22
14451-ZM7-000	C6	20	7	17532-ZM7-000	C14	28	6	89000				94251-04000	C14	28	23
14711-ZM7-000	C6	20	8	17620-ZV0-020	C14	28	7	89216-130-690	D1	31	2	94251-06000	C1	15	14
14721-ZM7-000	C6	20	9	17621-ZV0-020	C14	28	8					94301-06100	C3	17	9
14731-ZM7-013	C6	20	10	17622-ZV0-000	C14	28	9	90000							
14751-ZM7-000	C6	20	11	17623-ZV0-000	C14	28	10	90001-ZM7-000	C5	19	6	95002-02080	C14	28	24
14754-ZM7-000	C6	20	12	17624-ZV0-000	C14	28	11	90002-ZM7-000	C13	27	5	95002-02100	C14	28	25
14771-ZM3-010	C6	20	13	17625-ZV0-000	C14	28	12	90003-892-000	C1	15	9	95002-02130	C14	28	26
				17626-ZV0-010	C14	28	13					95701-08012-08	C3	17	10
15000				17628-ZV0-000	C14	28	14	90004-ZC3-000	C15	29	4				
15171-ZN4-000	C1	15	4	17629-ZV0-000	C14	28	15	90004-ZN4-000	C12	26	8	96000			
15361-ZN4-000	C6	20	14	17701-ZN4-800	C14	28	16	90006-ZM7-000	C2	16	5	96220-60150	C1	15	15
15571-ZM7-003	C1	15	5												
15572-ZM7-000	C1	15	6	18000				90008-ZM7-000	C1	15	10				
15600-ZN4-003	C2	16	2	18310-ZM7-003	C13	27	1	90012-892-000	C13	27	6	98000			
15625-ZE1-003	C2	16	3	18310-ZM7-801	C13	27	1	90012-896-750	C2	16	6				
15631-ZN4-000	C2	16	4	18320-ZM7-000	C13	27	2	90012-ZM3-003	C9	23	11	98056-54757	C1	15	16
15721-ZN4-000	C12	26	1	18350-ZM7-801	C13	27	3	90015-ZE5-010	C16	30	9	98056-54777	C1	15	16
				18515-ZM7-000	C13	27	4	90015-ZG0-801	C14	28	19	98056-55757	C1	15	16
16000								90042-ZM7-000	C10	24	2	98056-55777	C1	15	16
16010-ZG2-D10	C11	25	1	19000				90043-ZM7-000	C10	24	3				
16011-ZE0-005	C11	25	2	19052-MB4-880	C14	28	17	90103-P4V-010	C13	27	7	99000			
16013-ZG0-811	C11	25	3	19610-ZM7-000ZC	C10	24	1	90136-SM4-901	C13	27	8				
16015-ZG0-811	C11	25	4	19631-ZM7-000	C1	15	8	90206-KM3-000	C6	20	15	99101-ZG0-0480	C11	25	17
16016-ZH7-W01	C11	25	5					90441-ZM7-000	C3	17	5	99101-ZG0-0500	C11	25	17
16024-ZE1-811	C11	25	6												
16028-ZG0-811	C11	25	7												

PART NAME INDEX

F 1

Part name	Address	Page	Ref.	Part name	Address	Page	Ref.	Part name	Address	Page	Ref.
[A]								[N]			
ARM, GOVERNOR	C16	30	1	COVER COMP., CRANKCASE SIDE ...	C3	17	1	NOZZLE, MAIN.....	C11	25	11
ARM, SWING	C9	23	8	COVER COMP., FAN	C10	24	1	NUT, FLANGE, 10MM.....	C15	29	5
ARM, VALVE ROCKER	C6	20	5	COVER, AIR CLEANER	C12	26	7	NUT, FLANGE, 5MM.....	C9	23	13
ARRESTER COMP., SPARK	C13	27	3	COVER, HEAD	C1	15	2	NUT, FLANGE, 6MM.....	C16	30	11
								NUT, SELF-LOCK, 5MM.....	C13	27	8
[B]				[D]				NUT, TAPPET ADJUSTING.....	C6	20	15
BARREL COMP., CYLINDER	C1	15	1	DOWEL PIN, 6X10	C3	17	9				
BASE COMP., CONTROL	C16	30	7	[E]							
BODY, FUEL CAP	C14	28	8	ELEMENT, AIR CLEANER	C12	26	2	[O]			
BOLT-WASHER, 5X16	C6	20	17	EMBLEM	D1	31	1	OIL SEAL, 17X27X5.....	C2	16	7
BOLT, 4X10	C1	15	10	EXTENSION, OIL FILLER.....	C2	16	4	OIL SEAL, 5X11X5.....	C1	15	12
BOLT, CONNECTING ROD	C5	19	6					O-RING, 21.2X2.4.....	C2	16	8
BOLT, FLANGE, 5X12	C1	15	9	[F]							
	C16	30	8	FILTER, BREATHER	C1	15	3	[P]			
BOLT, FLANGE, 5X14	C2	16	6	FLOAT SET	C11	25	3	PACKING, 8MM.....	C3	17	6
BOLT, FLANGE, 5X16	C13	27	6	FLYWHEEL COMP.	C15	29	2	PACKING, AIR CLEANER.....	C12	26	5
BOLT, FLANGE, 5X20	C15	29	4	[G]				PACKING, CARBURETOR.....	C11	25	14
BOLT, FLANGE, 5X23	C2	16	5	GASKET SET	C11	25	1	PACKING, FUEL CAP.....	C14	28	12
	C3	17	4	GOVERNOR ASSY.	C3	17	2	PACKING, INSULATOR.....	C11	25	13
BOLT, FLANGE, 5X35	C13	27	7	GUIDE, AIR	C13	27	4	PACKING, OIL FILLER CAP.....	C2	16	3
BOLT, FLANGE, 5X65	C12	26	8	GUIDE, ROPE	C9	23	5	PACKING, VALVE	C14	28	11
BOLT, FLANGE, 6X65	C14	28	19					PIN, LOCK, 4MM.....	C14	28	23
BOLT, FLANGE, 8X12	C3	17	10					PIN, LOCK, 6MM.....	C1	15	14
BOLT, GOVERNOR ARM	C16	30	9					PIN, PISTON, 10X33.....	C5	19	3
BOLT, STUD	C10	24	2					PIPE, BREATHER	C1	15	4
			3					PISTON	C5	19	2
BOLT, STUD, 2,5X55	C13	27	5					PIVOT, ROCKER ARM.....	C6	20	7
				[H]				PLATE, CARBURETOR JOINT.....	C11	25	15
				HOLDER, CABLE	C16	30	6	PLATE, STOPPER	C1	15	6
[C]				[I]				PLUG, SPARK	C1	15	16
CAMSHAFT ASSY.	C6	20	2	INNER, FUEL CAP	C14	28	9	PROTECTOR COMP., MUFFLER.....	C13	27	2
CAP ASSY., FUEL TANK	C14	28	7	INSULATOR, CARBURETOR.....	C11	25	12	PULLEY, RECOIL STARTER.....	C9	23	7
CAP ASSY., OIL FILLER	C2	16	2					[R]			
CARBURETOR ASSY.	C11	25	9					REEL, RECOIL STARTER.....	C9	23	4
CASE ASSY., OIL	C2	16	1					RETAINER, VALVE SPRING.....	C6	20	13
CASE COMP., AIR CLEANER	C12	26	3					RING SET, PISTON.....	C5	19	1
CASE, RECOIL STARTER	C9	23	3					ROD ASSY., CONNECTING.....	C5	19	5
CHAMBER SET, FLOAT	C11	25	4					ROD, GOVERNOR	C16	30	2
CHOKE SET	C11	25	8					ROD, PUSH.....	C6	20	4
CLIP, GOVERNOR HOLDER	C3	17	7					ROLLER	C6	20	3
CLIP, PISTON PIN, 10MM	C5	19	4								6
CLIP, TUBE	C14	28	24					[K]			
			25					KEY, 5MM	C4	18	4
			26					KEY, SPECIAL	C4	18	3
COCK ASSY., FUEL	C14	28	2					KNOB, RECOIL STARTER	C9	23	9
COIL ASSY., IGNITION	C15	29	1					[L]			
COLLAR	C9	23	12					LIFTER, VALVE	C6	20	10
COLLAR, AIR CLEANER	C12	26	9					LINK, FUEL CAP	C14	28	14
COLLAR, CANISTER MOUNTING	C14	28	17								
COLLAR, FR. WINKER	C14	28	18					[M]			
COLLAR, LIFTER	C6	20	12					MUFFLER COMP.	C13	27	1
COLLAR, TANK SETTING	C14	28	5								
COLLAR, TOP COVER	C2	16	9								
	C13	27	9								
CORD, STOP SWITCH	C15	29	3								
COVER COMP., AIR CLEANER	C12	26	6								
								[S]			
								SCREW-WASHER, 5X10.....	C14	28	20
								SCREW SET	C11	25	7
								SCREW SET, DRAIN.....	C11	25	6
								SCREW SET, PILOT.....	C11	25	5
								SCREW, FLAT, 5X20.....	C11	25	16

PART NAME INDEX

Part name	Address	Page	Ref.	Part name	Address	Page	Ref.	Part name	Address	Page	Ref.
SCREW, PAN, 3X5	C1	15	13								
SCREW, PAN, 5X20	C16	30	10								
SCREW, SETTING	C9	23	11								
SCREW, TAPPING, 4X8	C13	27	10								
SCREW, THROTTLE STOP	C11	25	10								
SEAL, AIR CLEANER	C12	26	4								
SEAL, VALVE STEM	C6	20	1								
SHAFT, GOVERNOR ARM	C1	15	7								
SHROUD	C1	15	8								
SLIDER, GOVERNOR	C3	17	3								
SLINGER, OIL	C6	20	14								
SPONGE, FUEL CAP BREATHER	C14	28	10								
SPRING, CONTROL ADJUSTING	C16	30	5								
SPRING, FRICTION	C9	23	2								
SPRING, FUEL CAP	C14	28	15								
SPRING, GOVERNOR	C16	30	3								
SPRING, RECOIL STARTER	C9	23	6								
SPRING, THROTTLE RETURN	C16	30	4								
SPRING, VALVE	C6	20	11								
STARTER ASSY., RECOIL	C9	23	1								
STRAINER, FUEL	C14	28	3								
[T]											
TANK COMP., FUEL	C14	28	4								
TUBE B, FUEL	C14	28	1								
TUBE, BREATHER	C12	26	1								
TUBE, FUEL TANK	C14	28	16								
[V]											
VALVE COMP., BREATHER	C14	28	13								
VALVE SET, FLOAT	C11	25	2								
VALVE, EX.	C6	20	9								
VALVE, IN.	C6	20	8								
VALVE, OIL OUTLET	C1	15	5								
[W]											
WASHER, 4.2X13	C3	17	5								
WASHER, 5.2X9	C1	15	11								
WASHER, PLAIN, 4MM	C14	28	21								
WASHER, PLAIN, 6MM	C14	28	22								
WRENCH, SPARK PLUG	D1	31	2								

1

FOREWORD INDEX

2

ENGINE GROUP

3

PART NUMBER INDEX

4

PART NAME INDEX

HONDA
The Power of Dreams



PARTS CATALOGUE NEWS

Honda Motor Co., Ltd. Service Division

PARTS CATALOGUE - CORRECTED

Printed in Japan

CODE NO.	BOOKLET TYPE	13Z4D601
	MICRO-FICHE	13Z4D6EA/FA
PARTS CATALOGUE NEWS	GXV50U	
NEWS NO.	001	

Block No.	Ref. No.	Note	Part No.	Description	Reqd. QTY	Serial No.	Parts catalogue code
					GXV 50 U		
E-17	4		17510-ZN4-000	TANK COMP., FUEL	1	----- 1000278	
		A	17511-Z4D-000	TANK, FUEL	1	1000279	

NOTE A:PART NO. CHANGE D:NEWLY PROVIDED E:PART NO.DELETION K:REQUIRED NO. CORRECTION L:APPLICATION SERIAL NO. CORRECTION
T:APPLICATION CORRECTION Z:REMARKS CHANGE



PARTS CATALOGUE NEWS

Honda Motor Co., Ltd. Service Division

PARTS CATALOGUE - CORRECTED

Printed in Japan

CODE NO.	BOOKLET TYPE	13Z4D601
	MICRO-FICHE	13Z4D6EA/FA
PARTS CATALOGUE NEWS	GXV50U	
NEWS NO.	002	

Block No.	Ref. No.	Note	Part No.	Description	Reqd. QTY	Serial No.	Parts catalogue code
					GXV 50 U		
E-19	1		30500-ZM7-004	COIL ASSY., IGNITION	1	----- 1001065	
		A	30500-ZM7-014	1	1001066	

NOTE A:PART NO. CHANGE D:NEWLY PROVIDED E:PART NO.DELETION K:REQUIRED NO. CORRECTION L:APPLICATION SERIAL NO. CORRECTION
T:APPLICATION CORRECTION Z:REMARKS CHANGE



PARTS CATALOGUE NEWS

Honda Motor Co., Ltd. Service Division

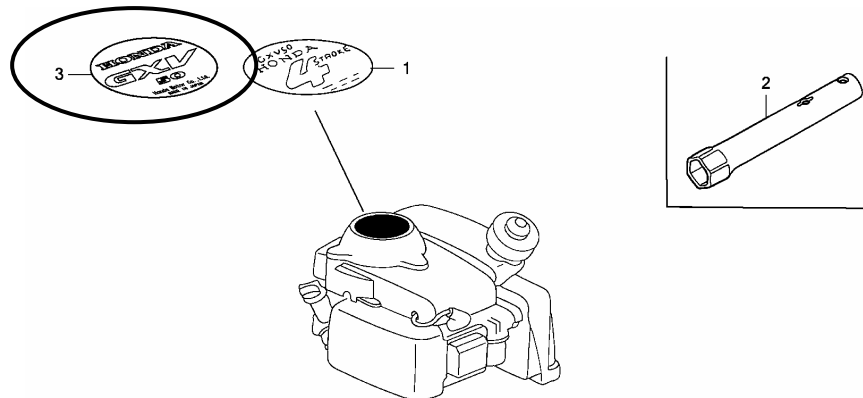
PARTS CATALOGUE - CORRECTED

Printed in Japan

CODE NO.	BOOKLET TYPE	13Z4D601
	MICRO-FICHE	13Z4D6EA/FA
PARTS CATALOGUE NEWS	GXV50U	
NEWS NO.	003	

Block No.	Ref. No.	Note	Part No.	Description	Reqd. QTY GXV 50 U	Serial No.	Parts catalogue code
-----------	----------	------	----------	-------------	-----------------------------	------------	----------------------

E-28 LABEL/TOOL



Z4DOE2800A

E-28	1	L	87521-ZN4-010	EMBLEM (4STROKE)	1	-----	1000970
------	---	---	---------------	------------------------	---	-------	---------

NOTE A:PART NO. CHANGE D:NEWLY PROVIDED E:PART NO.DELETION K:REQUIRED NO. CORRECTION L:APPLICATION SERIAL NO. CORRECTION
T:APPLICATION CORRECTION Z:REMARKS CHANGE

PARTS CATALOGUE NEWS

BOOKNo. : 13Z4D601

Block No.	Ref. No.	Note	Part No.	Description	Reqd. QTY GXV 50 U	Serial No.	Parts catalogue code
	3	D	87521-ZN4-020	EMBLEM (GXV50)	1	1000971	

NOTE A:PART NO. CHANGE D:NEWLY PROVIDED E:PART NO.DELETION K:REQUIRED NO. CORRECTION L:APPLICATION SERIAL NO. CORRECTION
T:APPLICATION CORRECTION Z:REMARKS CHANGE