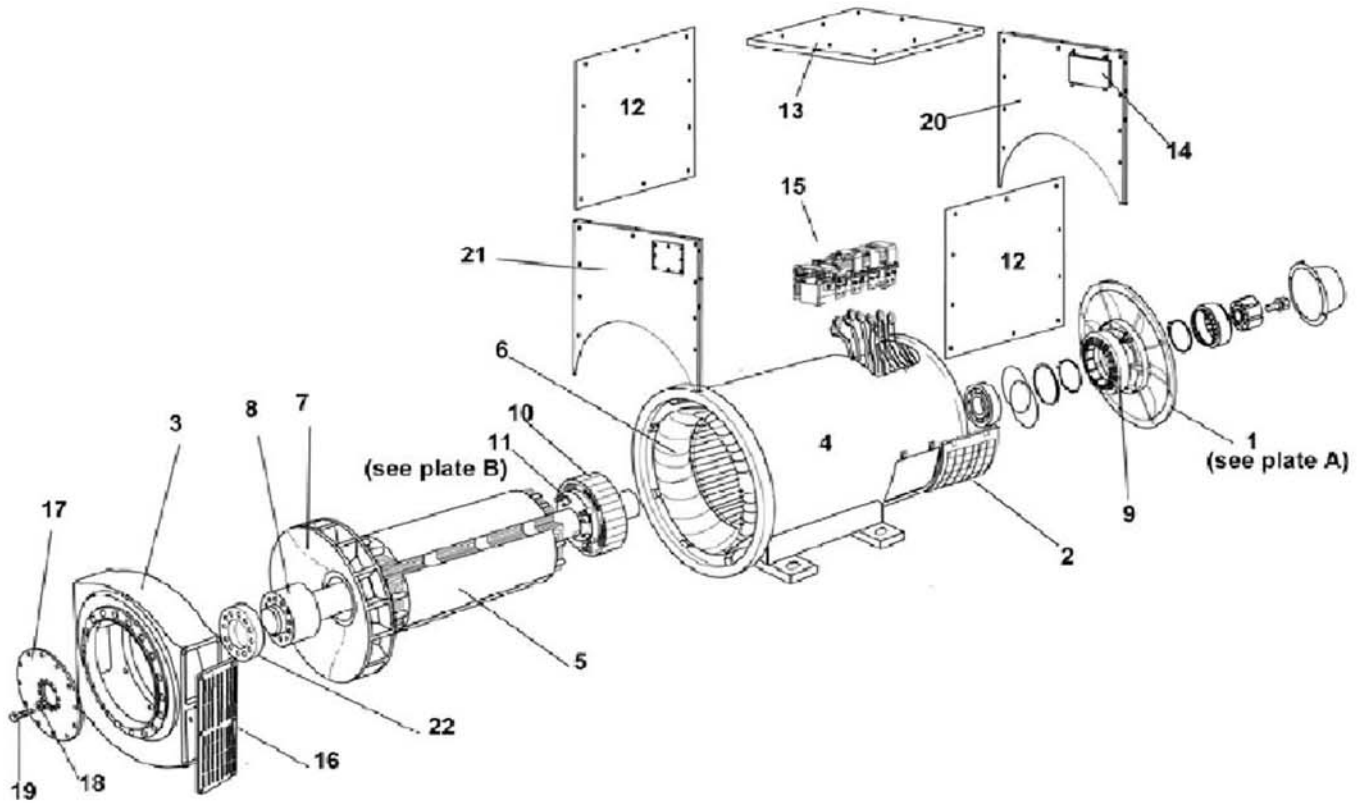
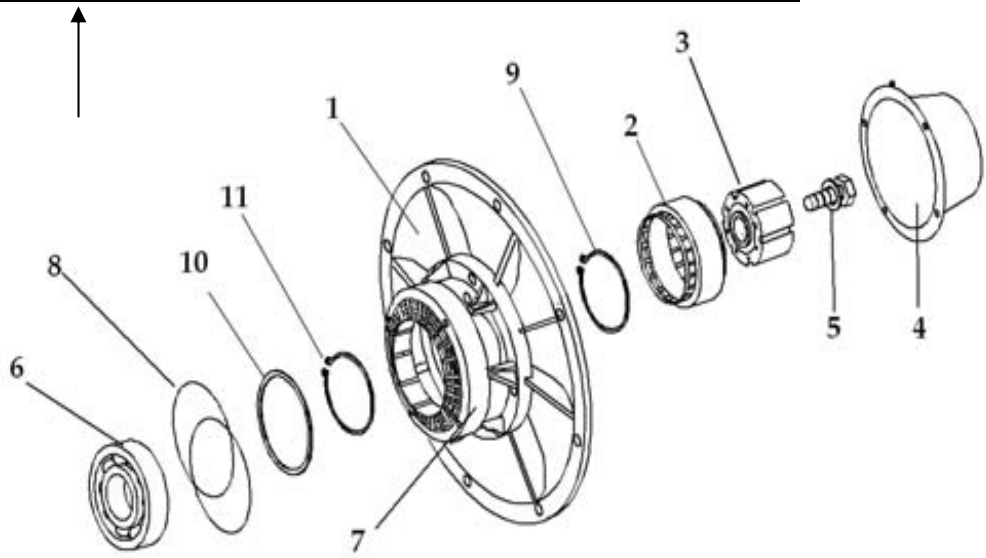


Model DG20000E3S

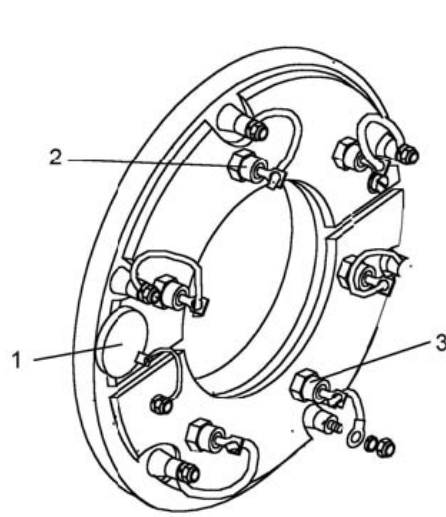


No.	Spare code	Description
1	DG20A001-N	N. D. E. Bracket (check attached plate A)
2	DG20A002-N	N. D. E. Cover
3	DG20A003-N	D. E. Adaptor SAE-0 (Drive End)
4	DG20A004-N	Main Frame Only (Non Service Part)
5	DG20A005-N	Main Rotor Assembly
6	DG20A006-N	Stator Assembly Complete
7	DG20A007-N	Fan
8	DG20A008-N	SHAFT (Non Service Part)
9	DG20A009-N	Exciter Stator
10	DG20A010-N	Exciter Rotor
11	DG20A011-N	Rotating Rectifier Assembly (check attached plate B)
12	DG20A012-N	Terminal Box Side Panel
13	DG20A013-N	Terminal Box Lid
14	DG20A014-N	A. V. R.
15	DG20A015-N	Main Terminal Arrangement
16	DG20A016-N	Drive End Screen
17	DG20A017-N	Coupling Disc SAE
18	DG20A018-N	Coupling Disc Washer
19	DG20A019-N	Coupling Bolt
20	DG20A020-N	Terminal Box Endpanel N.D.E.
21	DG20A021-N	Terminal Box Endpanel D.E.
22	DG20A022-N	Coupling Spacer
23	DG20A023-N	Foot Hole Reducing Bush

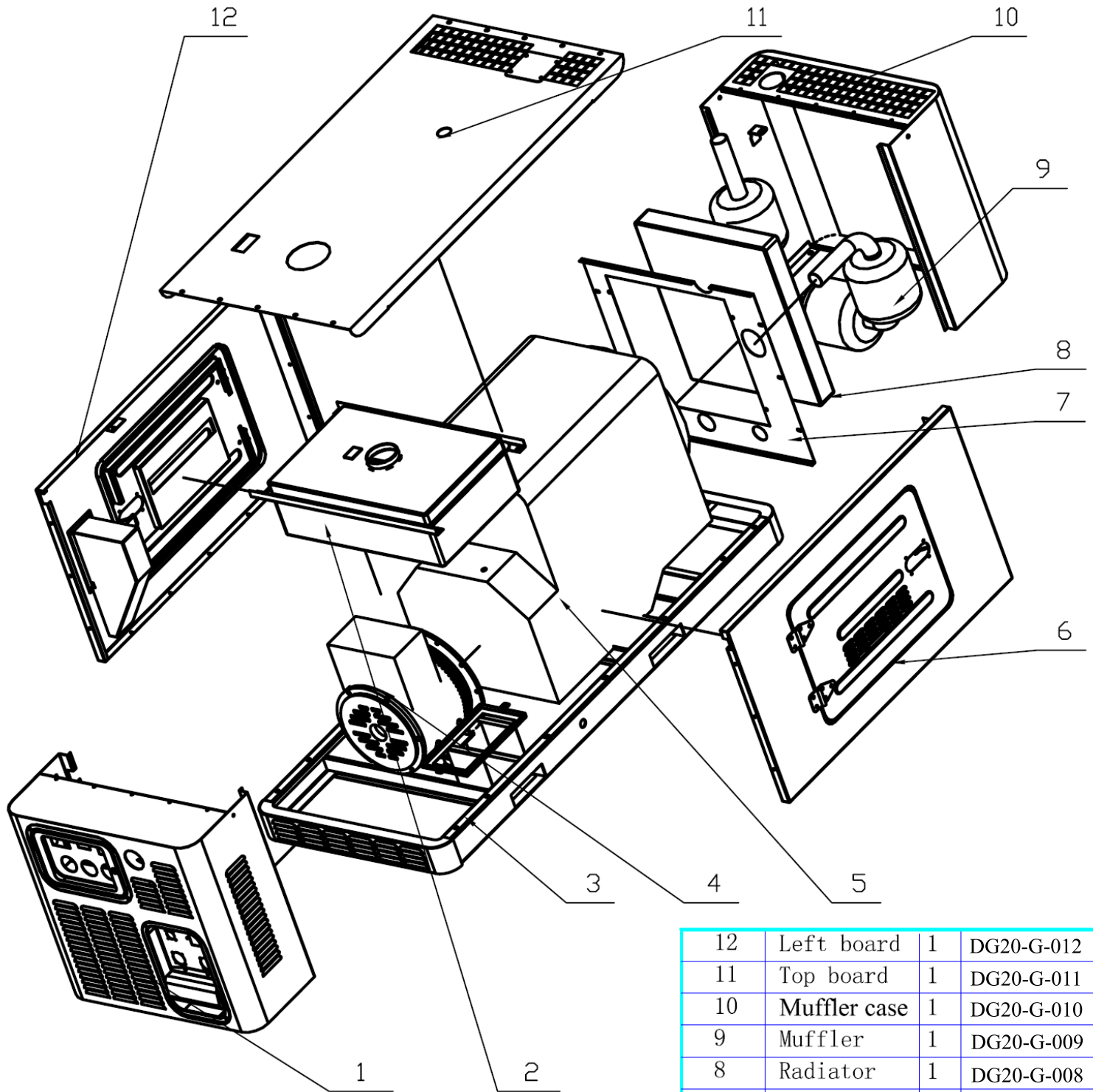
Attachment A (Plate A)		
No.	Spare code	Description
1	DG20A001-N-01	N.D.E. Bracket
2	DG20A001-N-02	Perm Magnet Stator Assy
3	DG20A001-N-03	Perm Magnet Rotor Assy
4	DG20A001-N-04	Perm Magnet Endcover
5	DG20A001-N-05	P M Rotor Fixing Bolt
6	DG20A001-N-06	Bearing
7	DG20A001-N-07	Exciter Stator
8	DG20A001-N-08	Bearing O Ring
9	DG20A001-N-09	Circlip
10	DG20A001-N-10	Waved washer
11	DG20A001-N-11	Circlip
(Items 2 to 5 supplied as Permanent Magnet Kit)		
(Items 6, 8, & 10 supplied as Replacement Bearing Kit)		



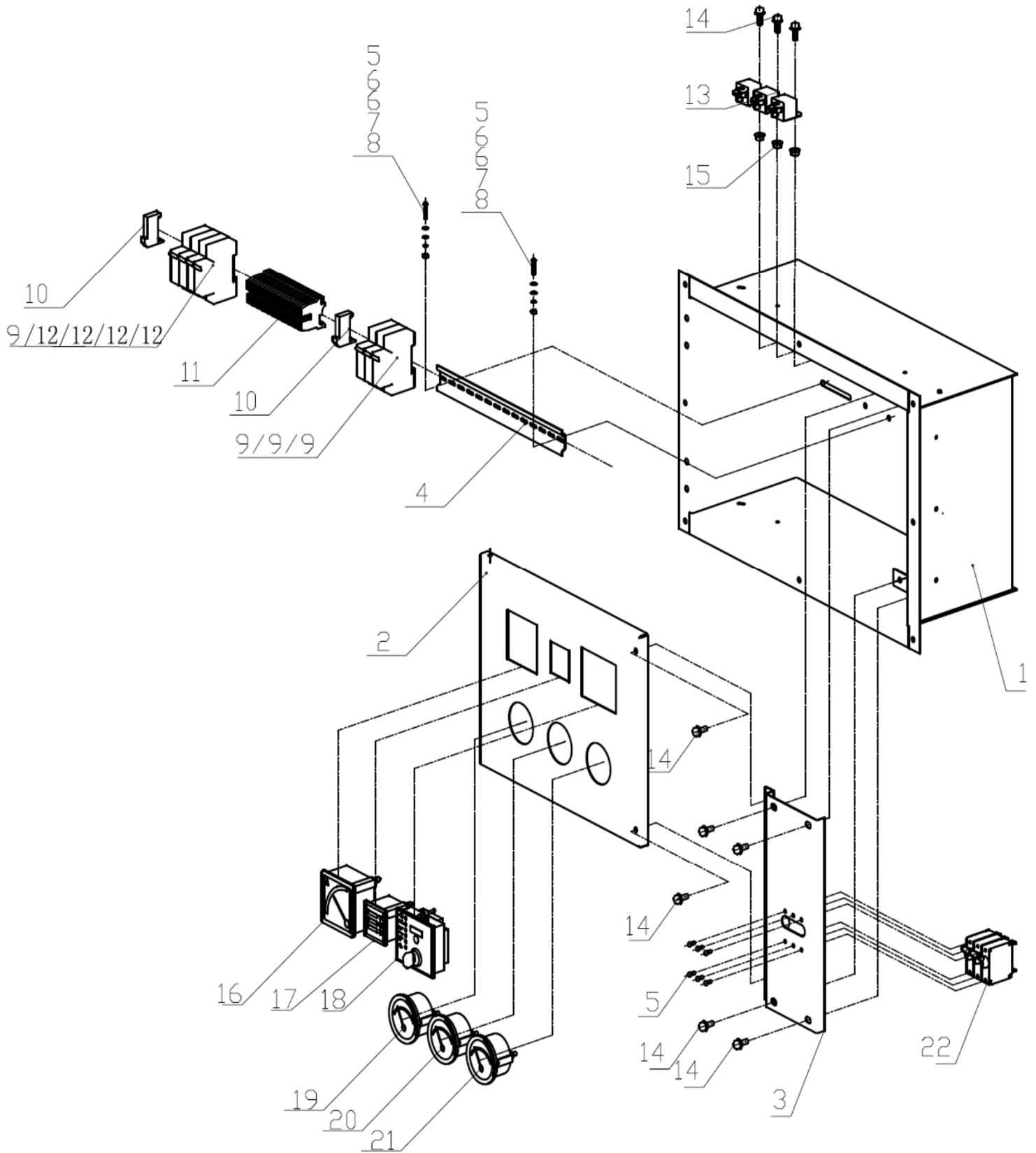
Attachment B (Plate B)		
No.	Spare code	Description
1	DG20A011-N-01	Varistor Assembly
2	DG20A011-N-02	Diode Forward (1 SET of 3)
3	DG20A011-N-03	Diode Reverse (1 SET of 3)
(Items 1 to 3 supplied as Rectifier Service Kit)		



Exploded Drawing of Frame for all water-cooled super silent diesel generator



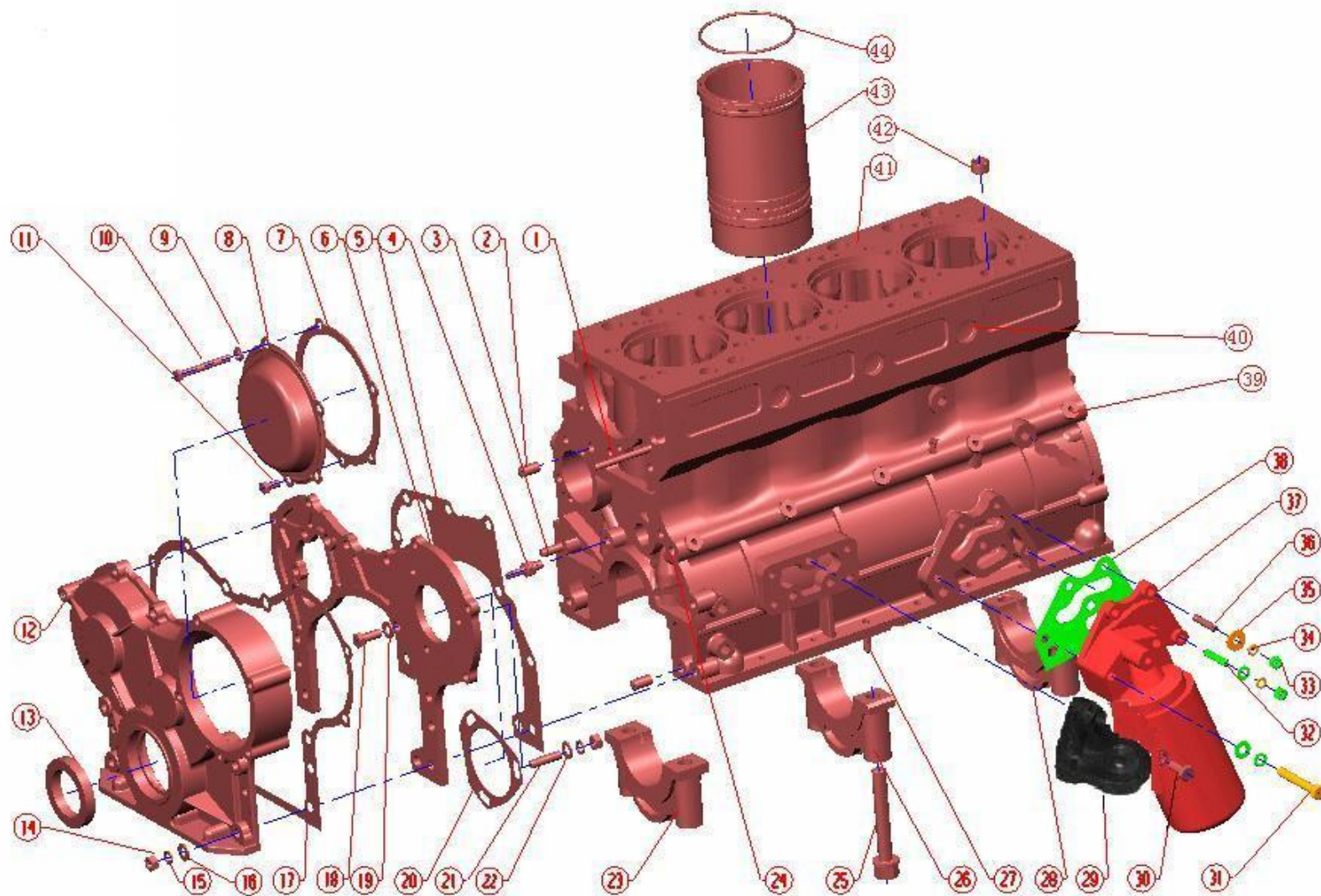
12	Left board	1	DG20-G-012
11	Top board	1	DG20-G-011
10	Muffler case	1	DG20-G-010
9	Muffler	1	DG20-G-009
8	Radiator	1	DG20-G-008
7	Radiator board	1	DG20-G-007
6	Right Board	1	DG20-G-006
5	Engine	1	DG20-G-005
4	Alternator	1	DG20-G-004
3	Bottom plate	1	DG20-G-003
2	Fuel tank	1	DG20-G-002
1	Electric parts	1	DG20-G-001
No.	Description	Qty.	Code



Ref.No.	Spare Code	Description	Qty
1	DGCS-N-01	Control box	1
2	DGCS-N-02	Penal	1
3	DGCS-N-03	Breaker fitting board	1
4	DGCS-N-04	Lead rail	1
5	DGW9902071	Cup head bolt M4 * 10	8
6	DGW9903060	Washer $\Phi 4$	4
7	DGW9904060	Spring washer $\Phi 4$	2
8	DGW9901062	Six angles nut	2
9	DGCS-N-05	DZ47 1P 6A Breaker	4
10	DGCS-N-06	Guard wall	2
11	DGCS-N-07	Connection terminal	21

Ref.No.	Spare Code	Description	Qty
12	DGCS-N-08	DZ47 1P 3A Breaker	4
13	DGCS-N-09	Relay	3
14	DGCS-N-10	Frang bolt M6*12	11
15	DGCS-N-11	Frang nut M6	3
16	DGCS-N-12	Current meter	1
17	DGCS-N-13	3 in 1 metter V.Hz.H	1
18	DGA-CS-D702	Control module DSC702	1
19	DGCS-N-14	Temperature meter	1
20	DGCS-N-15	Oil pressure meter	1
21	DGCS-N-16	Charging metter	1
22	DGCS-N-18-20	D30 Breaker for 3 phase	1

一、气缸体总成 CYLINDER BLOCK(一)

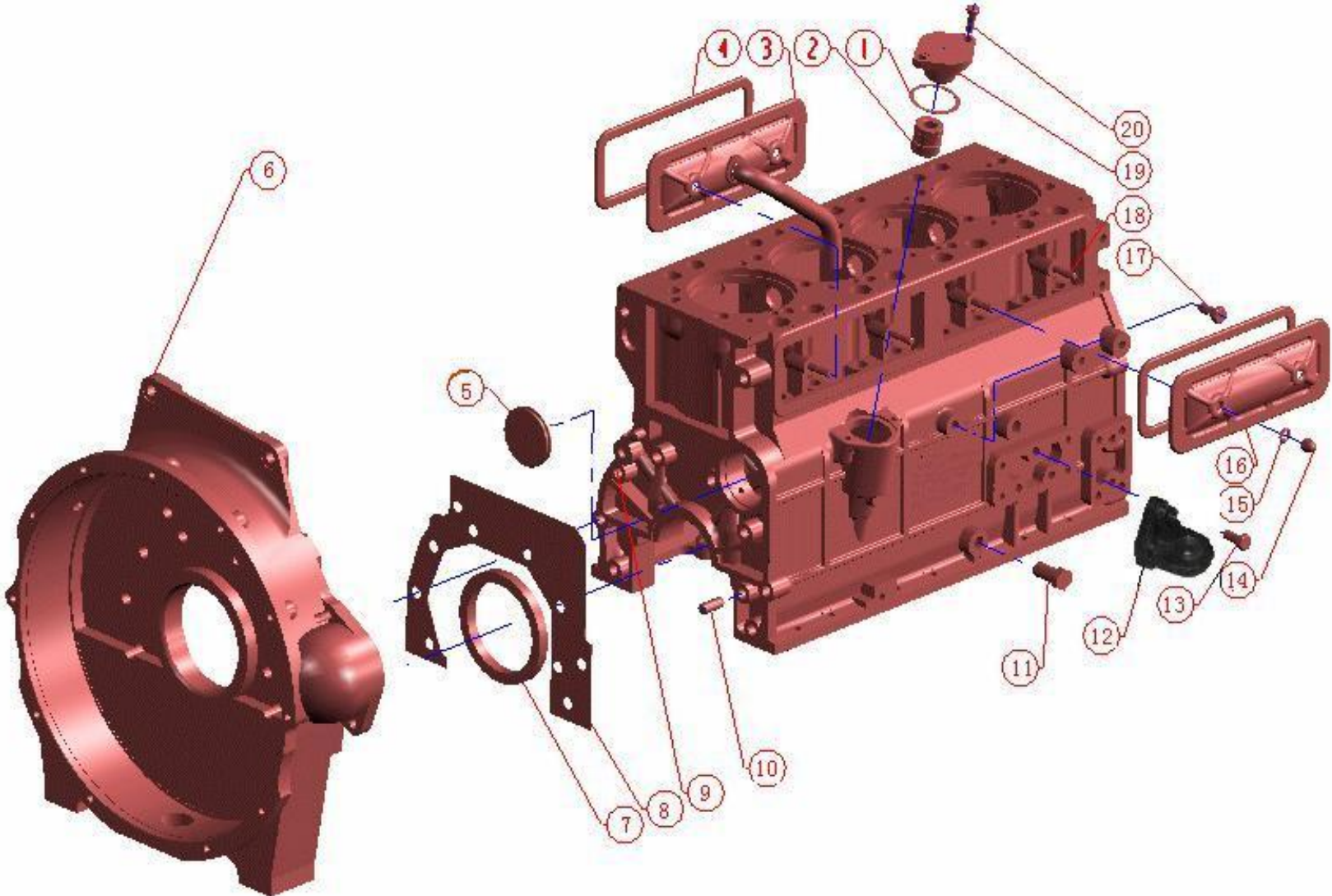


序号 Item	零件图号/规格 part No.	零件名称	Description	数量 Quantity				备注
				SD4M27	SD4M32	SD4BM33	SD4BM40	
1	Q1200870F3S	双头螺柱	Stud	1	1	1	1	
2	Q5211224	圆柱销	Straight pin	2	2	2	2	
3	Q1200845F3S	双头螺柱	Stud	3	3	3	3	
4	1002023 M	喷嘴	Jet	1	1	1	1	
5	1002072-3 M	齿轮室底板垫片	Gasket,gear case to block	1	1	1	1	
6	1002071 MD	齿轮室底板	Gear case	1	1	1	1	
7	1002077-2 M	提前器盖垫片	Gasket advance device cover	1	1	1	1	
8	1002076-2_M	提前器盖	Advance device cover	1	1	1	1	
9	Q40108	平垫圈	Washer	3	3	3	3	
10	Q150B0865	六角头螺栓	Hexagon headed bolt	3	3	3	3	
11	Q150B0612	六角头螺栓	Hexagon headed bolt	2	2	2	2	
	Q150B0812	六角头螺栓	Hexagon headed bolt	1	1	1	1	
12	1002073-3_M	齿轮室	Gear casing	1	1	1	1	
13	1005050 M	前油封	Oil seal front	1	1	1	1	
14	Q340B10	I型六角螺母	Hexagon nut, style I	5	5	5	5	
15	Q40310	弹簧垫圈	Spring washer	5	5	5	5	
16	Q40110	平垫圈	Washer	5	5	5	5	
17	1002074-3 M	齿轮室垫片	Gasket,cover to gear case	1	1	1	1	
18	Q150B1025	六角头螺栓	Hexagon headed bolt	3	3	3	3	
19	Q40110	平垫圈	Washer	3	3	3	3	
20	1111012 MD	喷油泵连接盘垫片	Gasket	1	1	1	1	
21	Q1201025F3S	双头螺柱	Stud	3	3	3	3	
22	Q40410	轻型弹簧垫圈	Spring washer, light style	3	3	3	3	
23	1005141-1 M	前主轴承盖	Main bearing cap, front	1	1	1	1	不单卖
24	1002232-2 M	堵塞	plug	2	2	2	2	
25	1005144 M	主轴承盖螺栓	Main bearing bolt	10	10	10	10	
26	1005142-1 M	中间主轴承盖	Main bearing cap, middle	3	3	3	3	不单卖
27	Q1200816	双头螺柱	Stud	0	0	0	0	

28	1005143-1 M	后主轴承盖	Main bearing cap, rear	1	1	1	1	不单卖
29	1001010 H	支撑	stand bar	1	1	1	1	
30	Q150B1025	六角头螺栓	Hexagon headed bolt	0	0	0	0	
31	Q150B1070	六角头螺栓	Hexagon headed bolt	2	2	2	2	
32	Q120B0835	螺柱	Stud	1	1	1	1	
33	Q341B08	螺母M8	Hexagon nut, style I	3	3	3	3	
34	Q40110	垫圈10	Washer	4	4	4	4	
35	Q40108	垫圈8	Washer	2	2	2	2	
36	Q120B0838	螺柱	Stud	2	2	2	2	
37	1012010-2_M	机油滤清器总成	Lubricating oil filter assy	1	1	1	1	滤芯配件号 1012001 M
38	1002032 M	机油滤连接板垫片	Gasket,oil filter connecting plate	1	1	1	1	
39	1002013Y M	堵塞	plug	5	5	5	5	
40	1002231 M	碗形塞片	Bowl-shaped plug plate	4	4	4	4	
41	1002014-5 M	气缸体	Cylinder block	1	1			配件不单卖
	1002014-2 BM					1	1	
42	1002011 M	气缸盖定位套	Cylinder head locating sleeve	2	2	2	2	
43	1002016-1 M	气缸套	Cylinder liner	4	4			
	1002016 BM					4	4	
44	1002017 M	水封圈	Water sealed ring	8	8			
	1002017 BM					8	8	

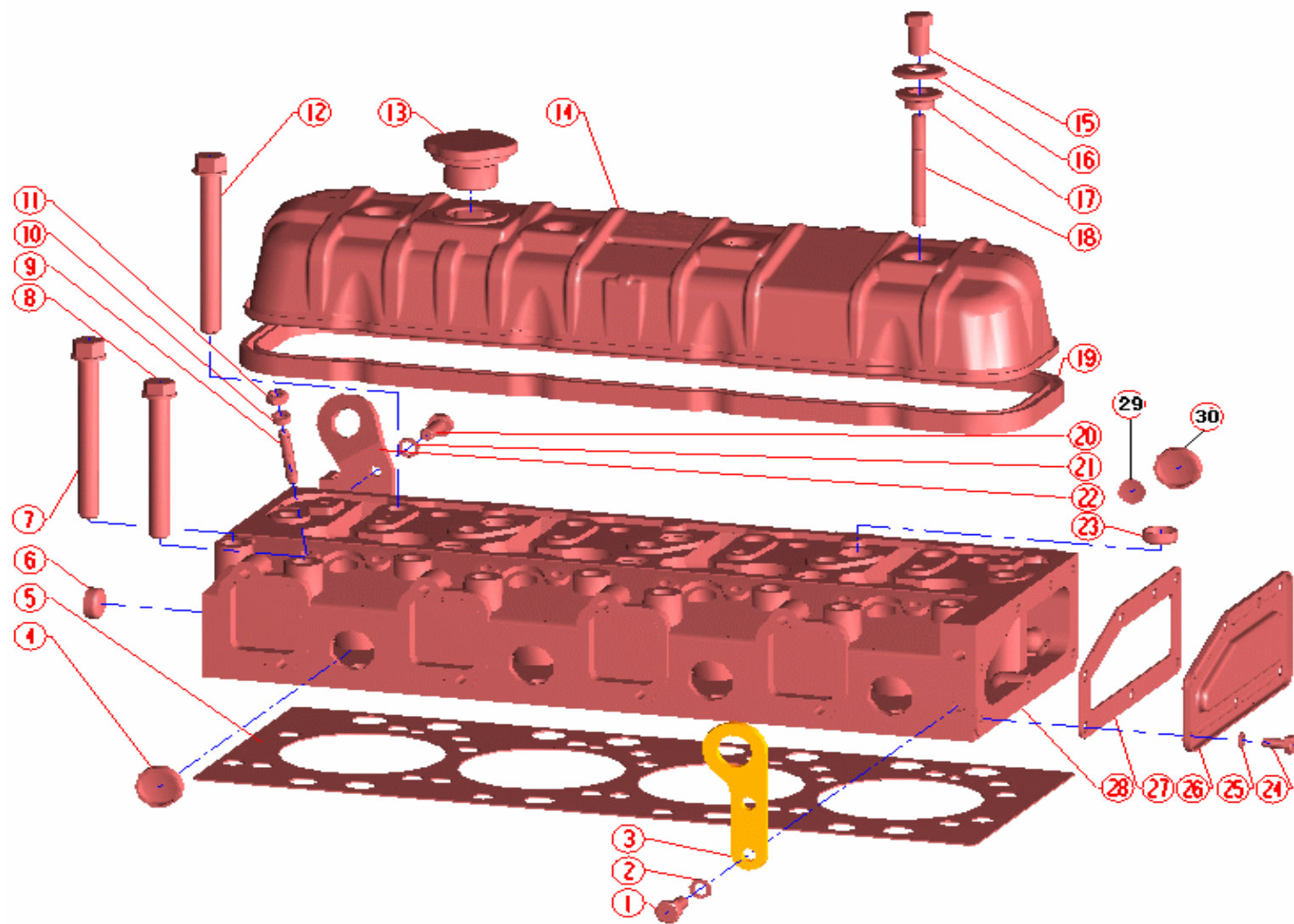
备注：气缸体、主轴承盖不单卖，机体以总成销售，包含气缸体、一套主轴承盖、一套凸轮轴轴瓦、一套主轴承盖螺栓、一套碗形塞片。

气缸体总成 CYLINDER BLOCK(二)



序号 Item	零件图号/规格 part No.	零件名称	Description	数量 Quantity				备注
				SD4M27	SD4M32	SD4BM33	SD4BM40	
1	1002042-1 M	机油泵上轴套盖垫片	Gasket	1	1	1	1	
2	1002044-1 M	机油泵传动轴衬套	Bush,oil pump drive gear shaft	1	1	1	1	
3	1002095L M	后上侧盖板焊合件	Rear side cover	1	1	1	1	
	1002101 M	透气胶管		1	1	1	1	
	1002097 M	呼吸器挡板		1	1	1	1	
4	1002098-1 M	上侧盖板垫片	Gasket,side cover	2	2	2	2	
5	1002234-2 M	堵盖-凸轮轴衬套	Plug	1	1	1	1	
6	1002061 MD	飞轮壳	Flywheel housing	1	1	1	1	
	1002068-1 M	飞轮壳橡胶堵塞		1	1	1	1	
7	1005060-1 M	后油封	Oil seal,rear	1	1	1	1	
8	1002064-4 M	飞轮壳垫片	Gasket,flywheel housing	1	1	1	1	
9	1002232-2 M	堵塞	plug	1	1	1	1	
10	Q5211224	圆柱销	Dowel pin	2	2	2	2	
11	Q617B16	六角头螺塞	Hexagon headed plug	1	1	1	1	
12	1001010 H	支撑	stand bar	1	1	1	1	
13	Q150B1025	六角头螺栓	Hexagon headed bolt	0	0	0	0	
14	Q394B08	盖形螺母	Cap Nut	4	4	4	4	
15	Q40308	弹簧垫圈	Spring washer	4	4	4	4	
16	1002092L M	前上侧盖板	ide cover,front	1	1	1	1	
17	Q617B16	六角头螺塞	Hexagon headed plug	1	1	1	1	
18	Q1200830F3S	双头螺柱	Stud	4	4	4	4	
19	1002041-2 M	机油泵上轴套盖	Cover for lube,oil pump	1	1	1	1	
20	Q150B0825	六角头螺栓	Hexagon headed bolt	2	2	2	2	

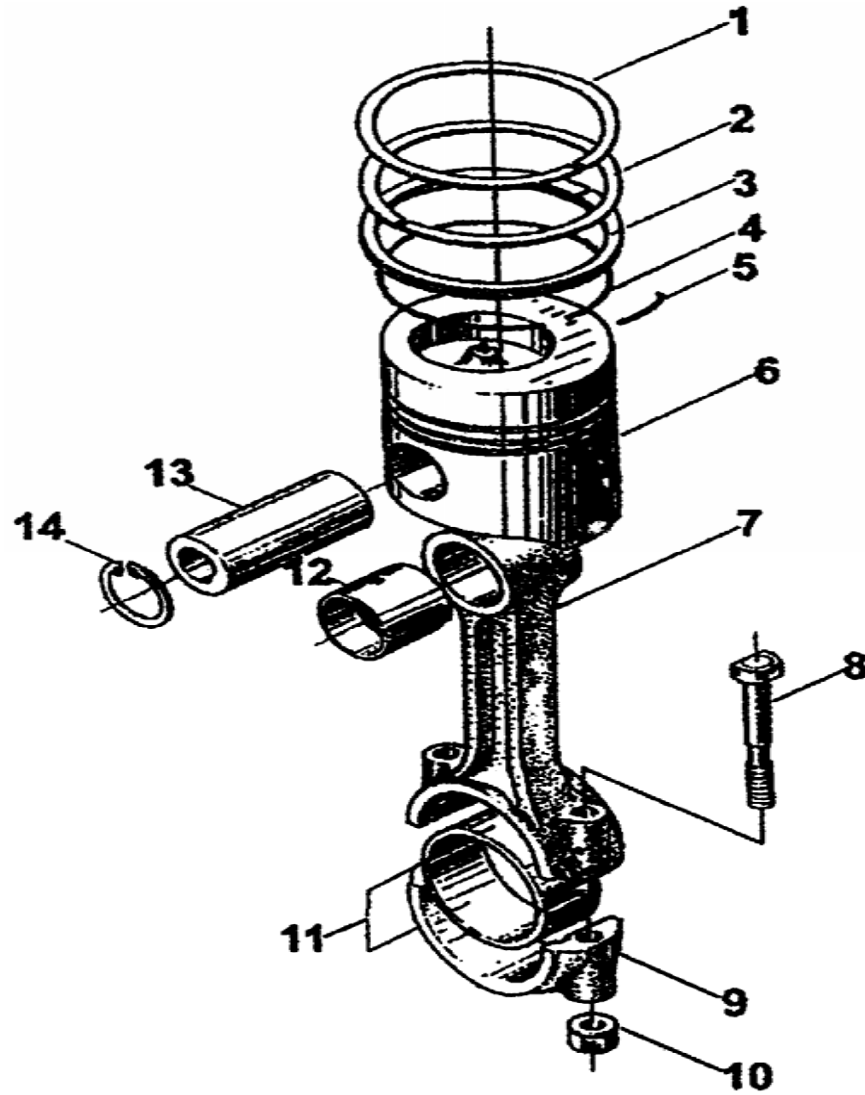
二、气缸盖组件 CYLINDER HEAD ASSY



序号 Item	零件图号/规格 part No.	零件名称	Description	数量 Quantity				备注
				SD4M27	SD4M32	SD4BM33	SD4BM40	
1	Q150B1020	六角头螺栓	Hexagon headed bolt	2	2	2	2	
2	Q40308	弹簧垫圈	Spring washer	2	2	2	2	
3	1003058-3 M	后吊耳	Eye plate, rear	1	1	1	1	
4	1002231/W	碗形塞片	Bowl-shaped plug plate	7	7	7	7	
5	1003022-2 M	气缸垫总成	Cylinder head gasket assy	1	1	1	1	
6	1003093/W	碗形塞片	Bowl-shaped plug, plate	5	5	5	5	
7	1003049 M	气缸盖中螺栓	Cylinder head bolt, middle	10	10	10	10	
8	1003047 M	气缸盖短螺栓	Cylinder head bolt, short	4	4	4	4	
9	Q1200845	双头螺柱	Stud	8	8	8	8	
10	Q40308	弹簧垫圈	Spring washer	8	8	8	8	
11	Q341B08	I型六角螺母	Hexagon Nut, style I	8	8	8	8	
12	1003046 M	气缸盖长螺栓	Cylinder head bolt, long	4	4	4	4	
13	1003033 QZ	加机油口盖	Oil filler cover	1	1	1	1	铝缸罩（选配）
	1003036 QZ	加油口塞密封圈	Oil filler cover “0” ring	1	1	1	1	
14	1003031L1-1 M	气缸盖罩总成	Cylinder head cover assy	1	1	1	1	
15	1003311L M	压紧螺母	Cap Nut	3	3	3	3	
16	1003313L M	平垫圈	Washer	3	3	3	3	
17	1003312L M	橡胶垫圈	Rubber ring Washer	3	3	3	3	
18	1003016L1 M	双头螺柱(涂胶)	Stud	3	3	3	3	
19	1003032L1_M	垫密条-气缸盖罩	Rubber sealing gasket-Cylinderhead cover	1	1	1	1	
	1003033-2/W	加机油口盖	Oil filler cover	1	1	1	1	
13	GB3452.1-1992(31.5*0	型密封圈31.5*3.55	“0” ring 31.5*3.55	1	1	1	1	
14	1003030-3 M	气缸盖罩总成	Cylinder head cover assy	1	1	1	1	
15	Q394B10	盖形螺母	Cap Nut	4	4	4	4	
16	Q40110	平垫圈	Washer	4	4	4	4	
17	1003034-1 Q	组合垫圈	Washer	4	4	4	4	
18	1003016-2 M	双头螺柱(涂胶)	Stud	4	4	4	4	

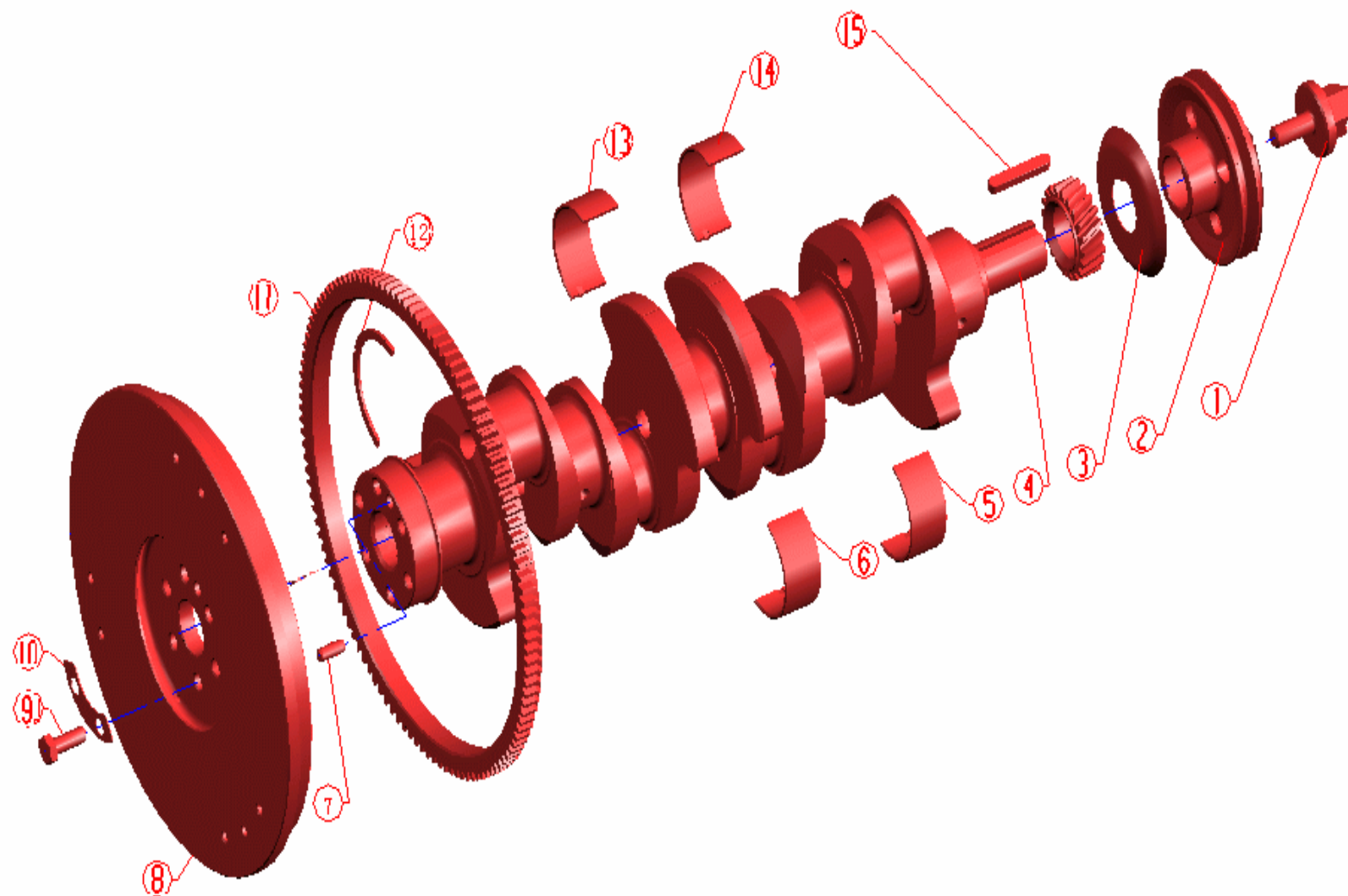
19	1003032-1_Q	垫密条-气缸盖罩	Rubber sealing gasket-Cylinderhead cover	1	1	1	1	
20	Q150B1025	六角头螺栓	Hexagon headed bolt	2	2	2	2	
21	Q40310	弹簧垫圈	Spring washer	2	2	2	2	
22	1003057-2 M	前吊耳	Eye plate, front	1	1	1	1	
23	34	碗形塞片	Bowl-shaped plug plate	3	3	3	3	
24	Q150B0820	六角头螺栓	Hexagon headed bolt	4	4	4	4	
25	Q40308	弹簧垫圈	Spring washer	7	7	7	7	
26	1003012 M	气缸盖后盖	Rear cover of cylinder head	7	7	7	7	
27	1003013 M	后盖板垫片	Gasket of rear cover	1	1	1	1	
28	1003011-2 M	气缸盖	Cylinder head	1	1	1	1	
29	1003092 M	堵塞 (1)	Bowl-shaped plug plate	3	3	3	3	
30	1003093 M	堵塞 (2)	Bowl-shaped plug plate	4	4	4	4	

三、活塞连杆总成 PISTON AND CONNECTING ROD



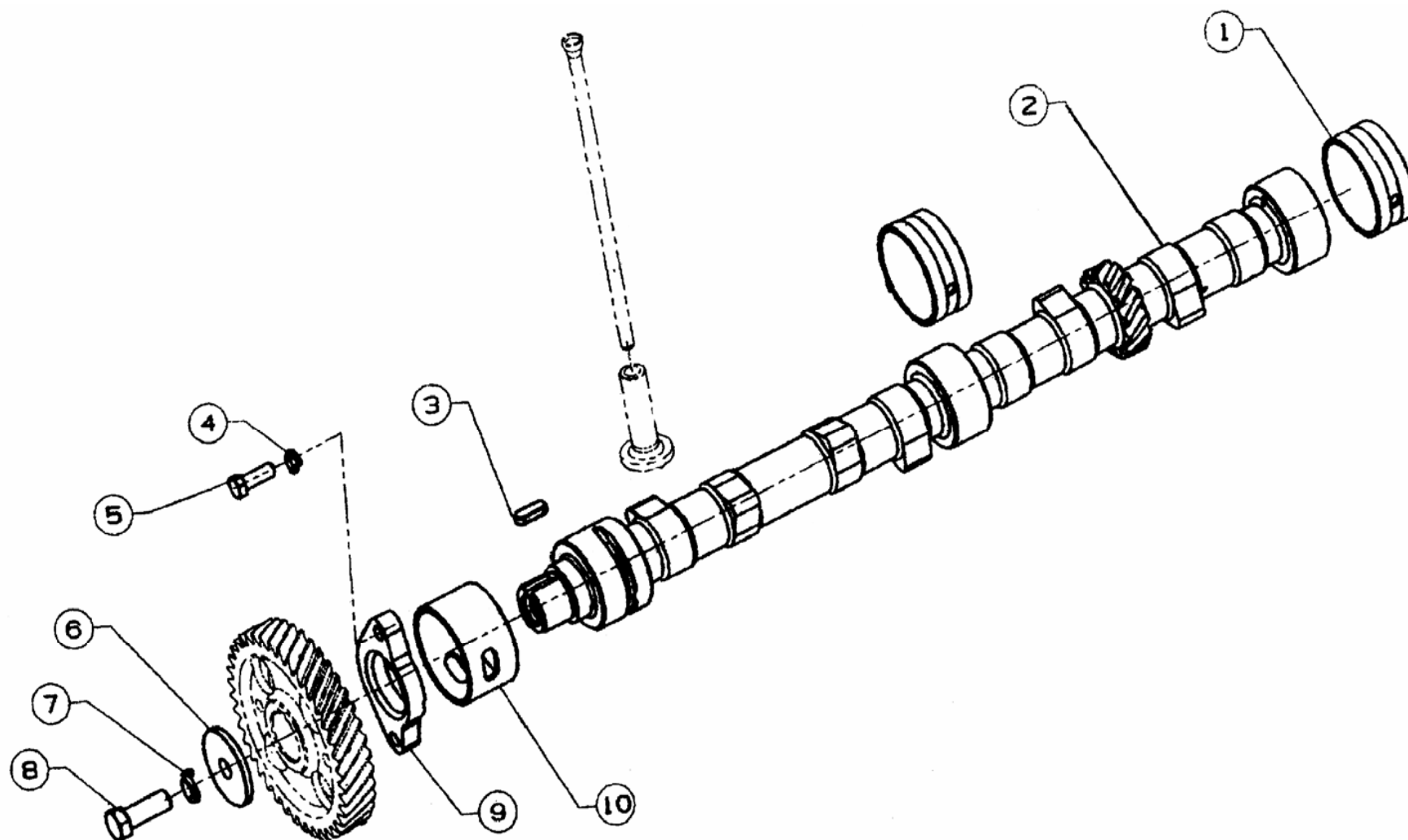
序号 Item	零件图号/规格 part No.	零件名称	Description	数量 Quantity				备注
				SD4M27	SD4M32	SD4BM33	SD4BM40	
1	1004012-1 M	第一道气环	ComperSSION ring (1)	4	4			成套销售, 件号 1004012/13/20- 1_M
2	1004013-1 M	第二道气环	ComperSSION ring (2)	4	4			
3	1004014-1 M	油环体	Oil ring	4	4			
4	1004016 M	螺旋撑簧	Oil ring spring	4	4			
5	1004017 M	门销	Locking pin	4	4			
1	1004012 BM	第一道气环	ComperSSION ring (1)			4	4	成套销售, 件号 1004012/13/20_ BM
2	1004013 BM	第二道气环	ComperSSION ring (2)			4	4	
3	1004014 BM	油环体	Oil ring			4	4	
4	1004016 BM	螺旋撑簧	Oil ring spring			4	4	
5	1004017 BM	门销	Locking pin			4	4	
6	1004011-3 M	活塞	Piston	4	4			
	1004011-3 BM					4	4	
7	1004021-3 M	连杆体	Connecting rod body	4	4			总成销售, 件号 1004010-3_M. 连 杆螺栓可单卖。
8	1004023-1 M	连杆螺栓	Connecting rod bolt	8	8			
9	1004022-1 M	连杆盖	Connecting rod cap	4	4			
10	1004024 M	连杆小头衬套	Connecting rod small end bush	4	4			
12	1004027 AM	连杆螺母	Connecting rod nut	8	8			
7	1004021 AM	连杆体	Connecting rod body			4	4	总成销售, 件号 1004010-1_AM. 连杆螺栓可单卖 。
8	1004023-1 AM	连杆螺栓	Connecting rod bolt			8	8	
9	1004022 AM	连杆盖	Connecting rod cap			4	4	
10	1004024 M	连杆小头衬套	Connecting rod small end bush			4	4	
12	1004027 AM	连杆螺母	Connecting rod nut			8	8	
11	1004026 M	连杆轴瓦	Connecting rod bearing	8	8			
	1004026 AM					8	8	
13	1004018 M	活塞销	Piston pin	4	4			
	1004018 BM					4	4	
14	GB893.1-1986	挡圈35	Internal snap ring	8	8	8	8	

四、曲轴、飞轮总成 CRANKSHAFT AND FLYWHEEL



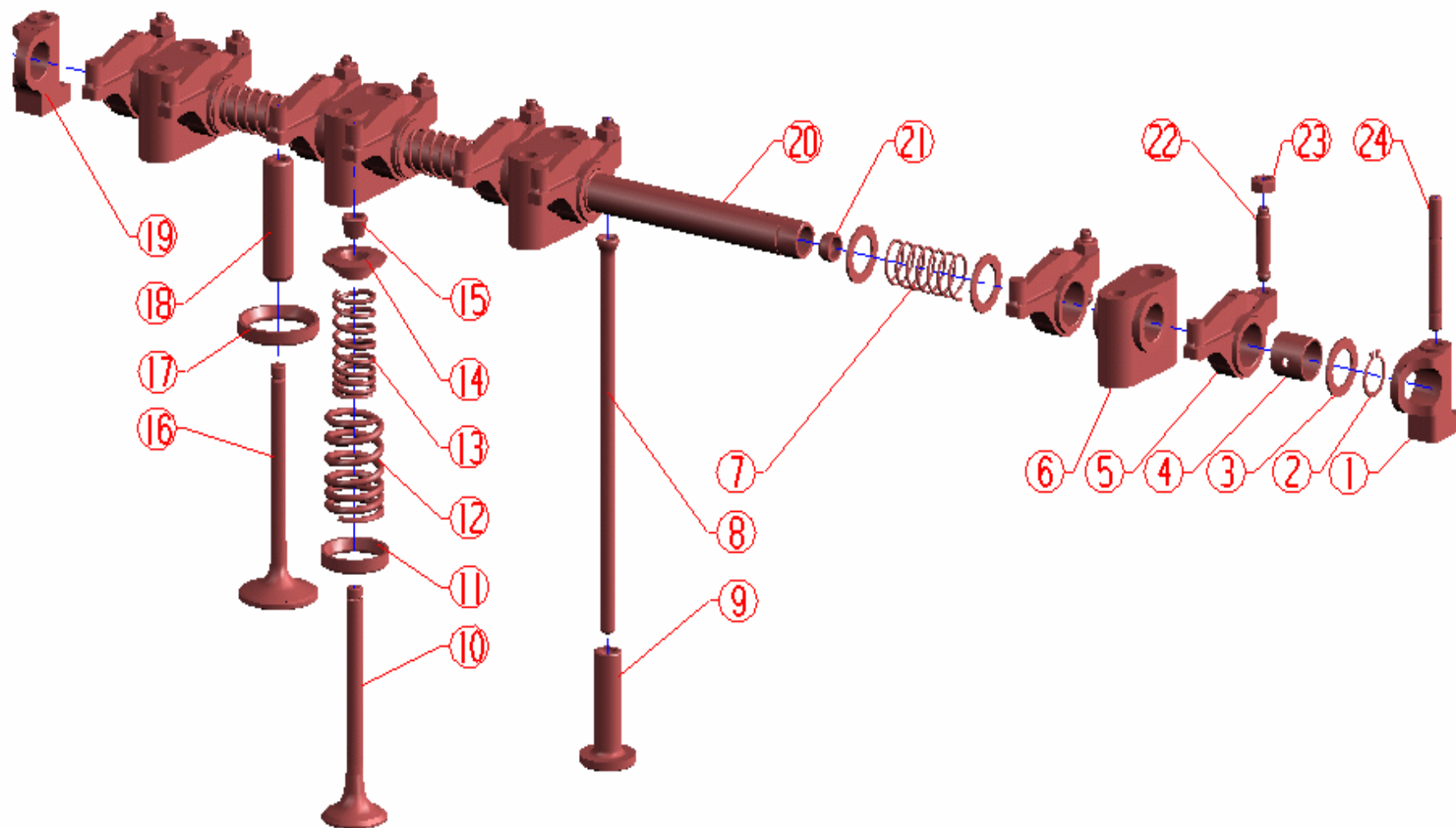
序号 Item	零件图号/规格 part No.	零件名称	Description	数量 Quantity				备注
				SD4M27	SD4M32	SD4BM33	SD4BM40	
1	1005044-1 M	起动螺栓	Starting bolt	1	1	1	1	
2	1005046 MD	曲轴皮带轮	Pulley	1	1	1	1	
3	1005036 M	前挡油盘	Oil retainerdisc, front	1	1	1	1	
4	1005014 MY-06	曲轴	Crankshaft	1	1			
	1005014 AMY-11					1	1	
5	1005162_M	前后主轴瓦（下）	Botton half, front and rear main bearing	2	2			成对销售
	1005162_AM					2	2	
6	1005172_M	中间主轴瓦（下）	Botton half, middle main bearing	3	3			成对销售
	1005172_AM					3	3	
7	Q5221024	圆柱销	Dowel pin	1	1	1	1	
8	1005121_MD	飞轮	Flywheel	1	1	1	1	建议以总成购买 （及购买飞轮齿 圈总成）
9	1005123 QZL	飞轮螺栓	Flywheel bolt	6	6	6	6	
10	1005124 MY-06	防松垫片	Lock plate	3	3	3	3	
11	1005122 M	齿环-飞轮	Ring gear-flywheel	1	1	1	1	
12	1005181-3 M	止推片	Thrust plate	4	4			
	1005181-2 M	上止推片	Thrust plate			2	2	
	1005181 M	下止推片	Thrust plate			2	2	
13	1005171 M	中间主轴瓦（上）	Top half, middle main bearing	3	3			成对销售
	1005171 AM					3	3	
14	1005161_M	前后主轴瓦（上）	Top half, front and rear main bearing	2	2			成对销售
	1005161_AM					2	2	
15	GB1096-1979	键C10X56	Key C10x56	1	1	1	1	

五、凸轮轴总成 CAMSHAFT ASSY



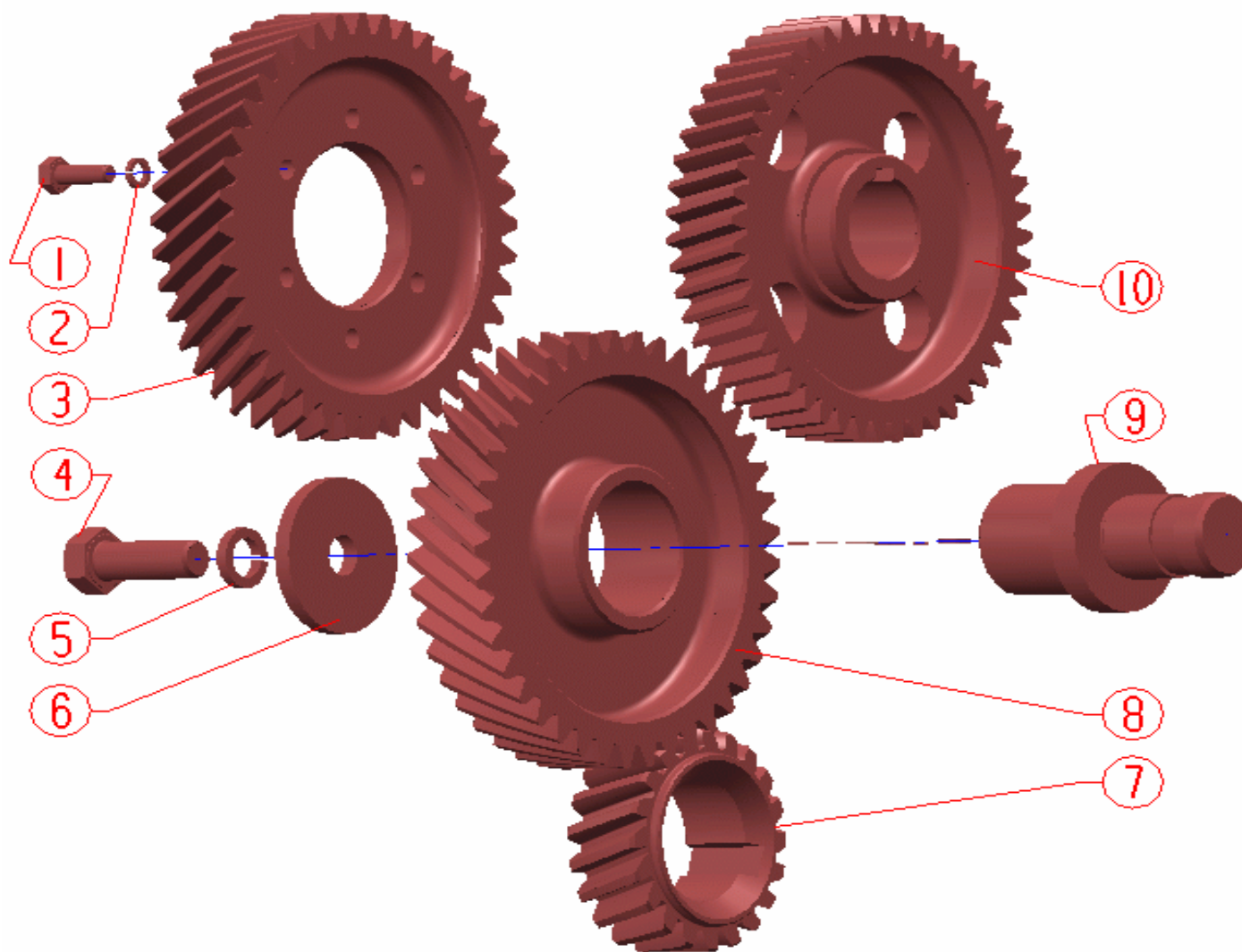
序号 Item	零件图号/规格 part No.	零件名称	Description	数量 Quantity				备注
				SD4M27	SD4M32	SD4BM33	SD4BM40	
1	1006028-3_M	凸轮轴衬套（II，III）	Bushing(II, III) of camshaft	2	2	2	2	
2	1006015-2 M	凸轮轴	Camshaft	1	1	1	1	
3	GB1096-1979	键8X22	Key 8X22	1	1	1	1	
4	Q40308	弹簧垫圈	Spring washer	2	2	2	2	
5	Q150B0825	六角头螺栓	Hexagon-headed bolt	2	2	2	2	
6	1006022-1 M	凸轮轴正时齿轮压板	Press plate of timing gear, camshaft	1	1	1	1	
7	Q40108	平垫圈	Washer	1	1	1	1	
8	Q150B0830	六角头螺栓	Hexagon-headed bolt	1	1	1	1	
9	1006018 M	凸轮轴压板	Press plate, camshaft	1	1	1	1	
10	1006024-3 M	凸轮轴衬套（I）	Bushing(I) of camshaf	1	1	1	1	

六、气门机构 VALVE TRAIN



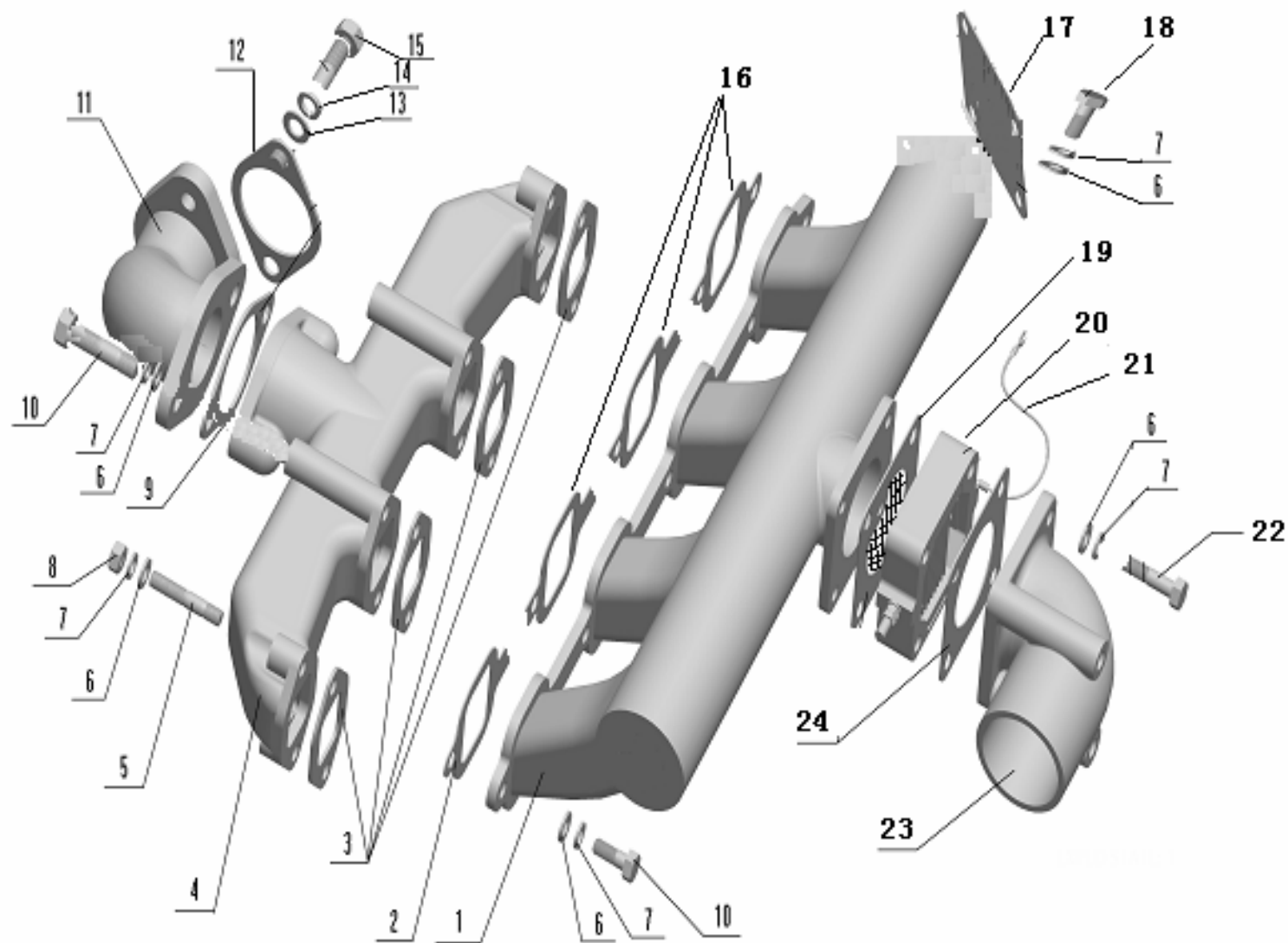
序号 Item	零件图号/规格 part No.	零件名称	Description	数量 Quantity				备注
				SD4M27	SD4M32	SD4BM33	SD4BM40	
1	1007126 M	后辅助摇臂座	Rear bracket, rocker arm shaft	1	1	1	1	配件以1007090-1_M气门摇臂轴总成销售
2	Q43120	轴用弹性挡圈	Circlip for shaft	2	2	2	2	
3	1007093 M	垫圈	Washer	8	8	8	8	
4	1007094-1 M	气门摇臂衬套	Bushing, rocker arm	8	8	8	8	
5	1007096 M	气门摇臂	Rocker arm	8	8	8	8	
6	1007127 M	摇臂座	Rocker arm shaft bracket	4	4	4	4	
7	1007114 M	气门摇臂轴弹簧	Spring of rocker arm shaft	3	3	3	3	
19	1007125 M	前辅助摇臂座	Front bracket, rocker arm shaft	1	1	1	1	
20	1007091-1 M	摇臂轴	Rocker arm shaft	1	1	1	1	
21	1007092 M	碗形塞	Plug	2	2	2	2	
22	1007097 M	气门间隙调节螺钉	Adjusting screw, rocker arm	8	8	8	8	
23	Q341B08	I型六角薄螺母	Hexagon nut, style I	8	8	8	8	
8	1007051-2 M	推杆	Push rod	8	8			
	1007051-1 AM	推杆	Push rod			8	8	
9	1007061 M	挺柱	Tappet	8	8	8	8	
10	1007016 M	排气门	Exhaust valve	4	4	4	4	
11	1007081 M	排气门座	Seat insert, exhaust valve	4	4	4	4	
12	1007021 M	气门外弹簧	Outer spring of valve	8	8	8	8	
13	1007022 M	气门内弹簧	Inter spring of valve	8	8	8	8	
14	1007024-1 M	气门弹簧座	Valve spring seat	8	8	8	8	
15	1007028 M	气门夹锁	Valve split collet	16	16	16	16	
16	1007011 M	进气门	Intake valve	4	4	4	4	
17	1007082 M	进气门座	Seat insert, inlet valve	4	4	4	4	
18	1007032 M	气门导管	Valve guiding pipe	8	8	8	8	
24	Q1200860	双头螺柱	Stud	2	2	2	2	

七、传动系统 GEAR TRAIN



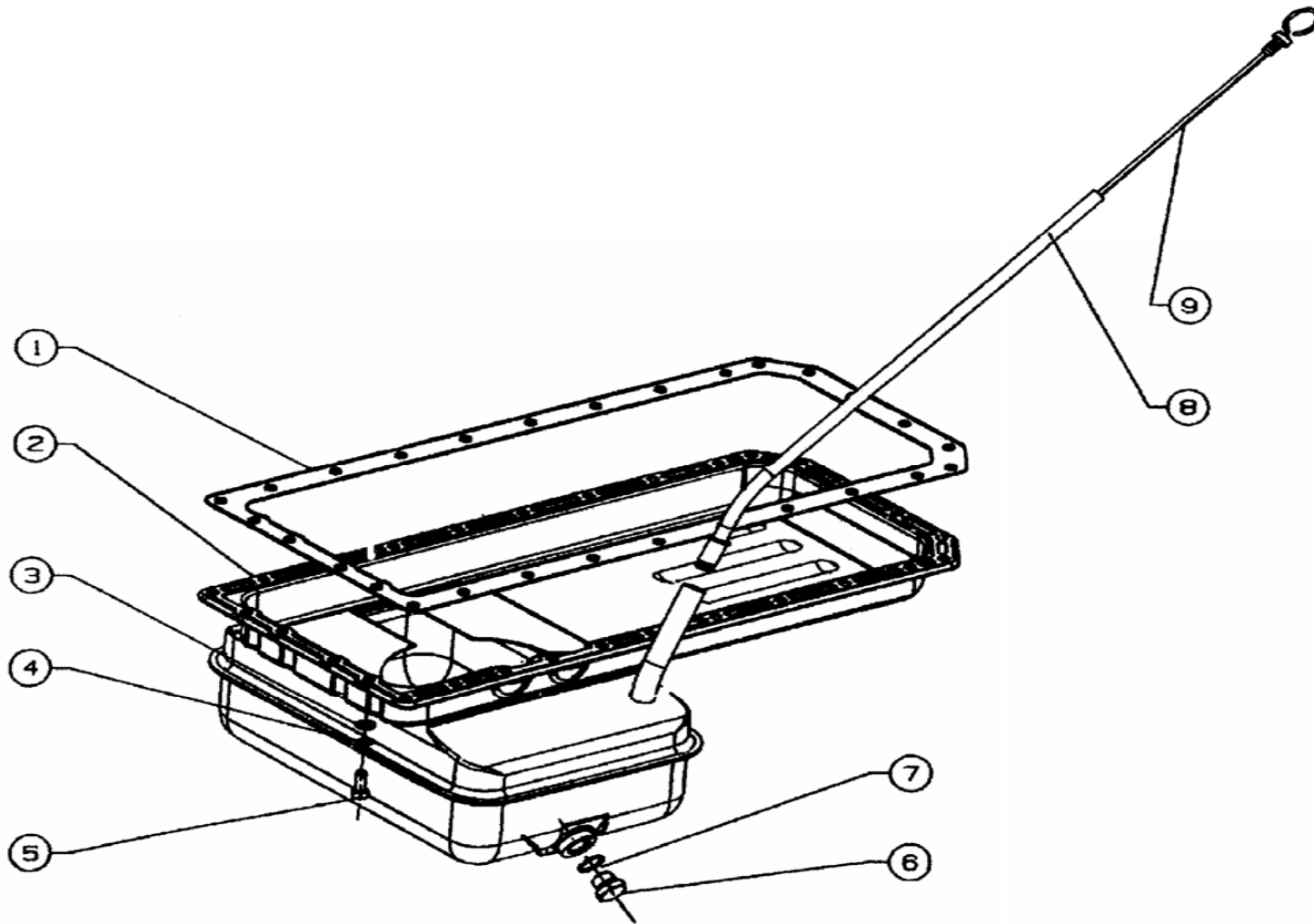
序号 Item	零件图号/规格 part No.	零件名称	Description	数量 Quantity				备注
				SD4M27	SD4M32	SD4BM33	SD4BM40	
1	Q150B0616	六角头螺栓	Hexagon headed bolt	6	6	6	6	
2	Q40306	弹簧垫圈	Spring washer	6	6	6	6	
3	1111216-1 M	传动齿轮-喷油泵	Fuel injection pump drive gear	1	1	1	1	
4	Q150B0820	六角头螺栓	Hexagon headed bolt	1	1	1	1	
5	Q40108	平垫圈	Washer	1	1	1	1	
6	1006049-1 M	正时惰齿轮压板	Baffle, idle gear	1	1	1	1	
7	1005084 M	曲轴正时齿轮	Timing gear, crankshaft	1	1	1	1	
8	1006045-1 M	正时惰齿轮	Timing idle gear	1	1	1	1	
9	1006048-1 M	正时惰齿轮轴	Idle gear shaft	1	1	1	1	
10	1006021-2 M	凸轮轴正时齿轮	Timing gear of camshaft	1	1	1	1	

八、进、排气管组件 INTAKE AND EXHAUST MANIFOLD ASSY



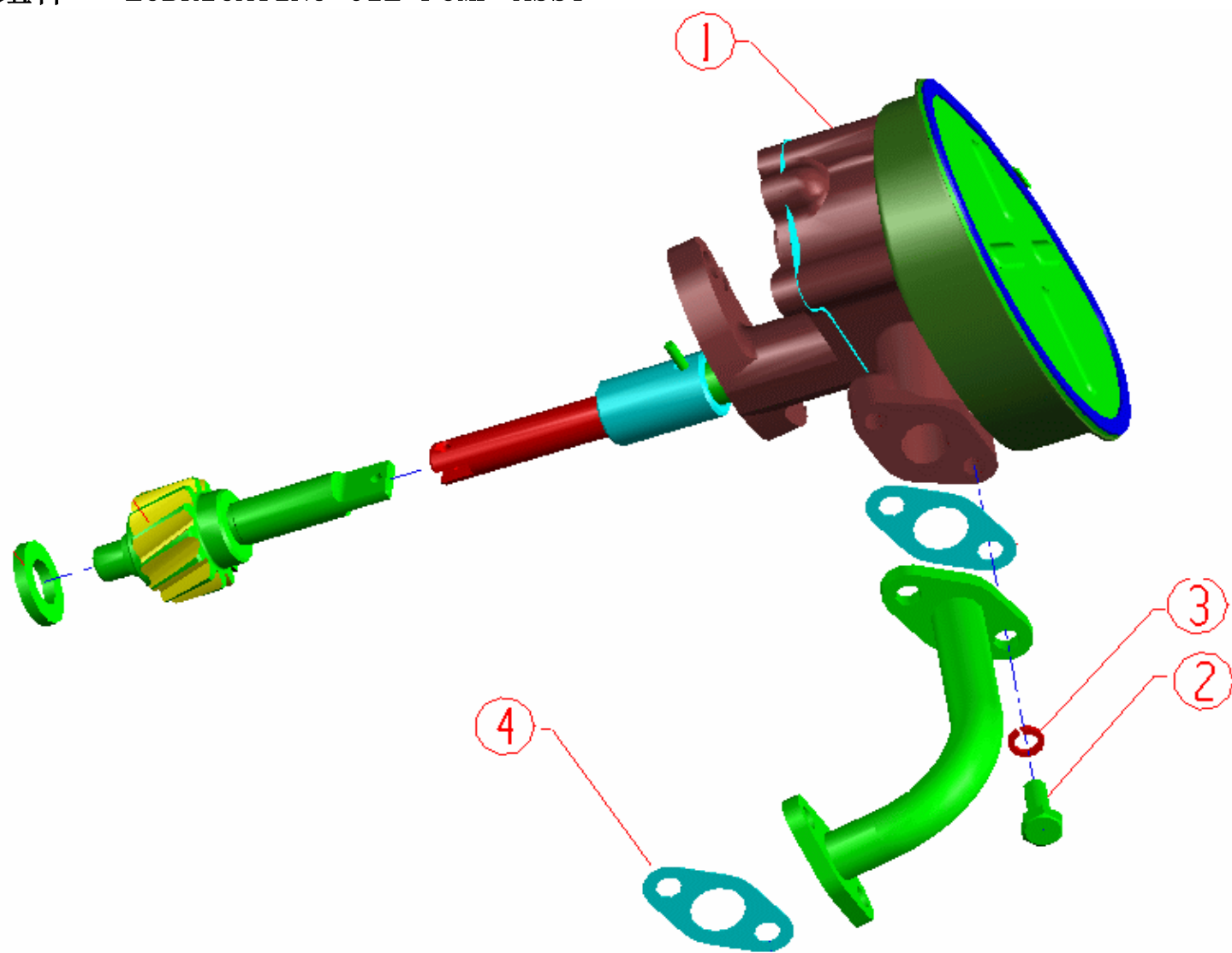
序号 Item	零件图号/规格 part No.	零件名称	Description	数量 Quantity				备注
				SD4M27	SD4M32	SD4BM33	SD4BM40	
1	1008016 MD	进气管	Intake mainfold	1	1	1	1	
2	1008017-1 M	进气管垫片	Gasket, intake mainfold	1	1	1	1	
3	1008045 M	排气管垫片	Gasket, exhaust bolt	4	4	4	4	
4	1008042_MY-06	排气管	Exhaust manifold	1	1	1	1	实际安装孔为四孔法兰
5	Q1200830	双头螺柱	Stud	8	8	8	8	
6	Q40108	平垫圈	Washer	28	28	28	28	
7	Q40408	轻型弹簧垫圈	Spring washer, light style	28	28	28	28	
8	Q34108	I型六角螺母	Hexagon nut, style I	8	8	8	8	
9	1008046 MY-06	排气接管垫片	Gasket	1	1	1	1	
10	Q150B0820	六角头螺栓	Hexagon-headed bolt	12	12	12	12	
11	1008043_MD	排气接管	Exhaust connecting pipe	1	1	1	1	法兰安装孔中心距离为74
12	1008046-1/W	排气总管垫片	Gasket	1	1	1	1	
13	Q40110	平垫圈	Washer	2	2	2	2	
14	Q40410	轻型弹簧垫圈	Spring washer, light style	2	2	2	2	
15	Q150B1025	六角头螺栓	Hexagon-headed bolt	2	2	2	2	
16	1008017-2 M	进气管垫片	Gasket, intake mainfold	3	3	3	3	
17	1008021/WK	盖板		1	1	1	1	
18	Q150B0816	六角头螺栓	Hexagon-headed bolt	4	4	4	4	
19	3750011 BWB-41	挡网	Block graticule	1	1	1	1	
20	3750010 BWB-41	空气加热器	Air boiler	1	1	1	1	
21	3750020/WA1-04	空气加热器接地线	Earth wire of air boiler	1	1	1	1	
22	Q150B0845	六角头螺栓	Hexagon-headed bolt	4	4	4	4	
23	1008017-3 WK	进气接管	Intake connecting pipe	1	1	1	1	
24	1008019 MD	进气接管垫片	Gasket, Intake connecting pipe	2	2	2	2	

九、油底壳组件 OIL SUMP ASSY



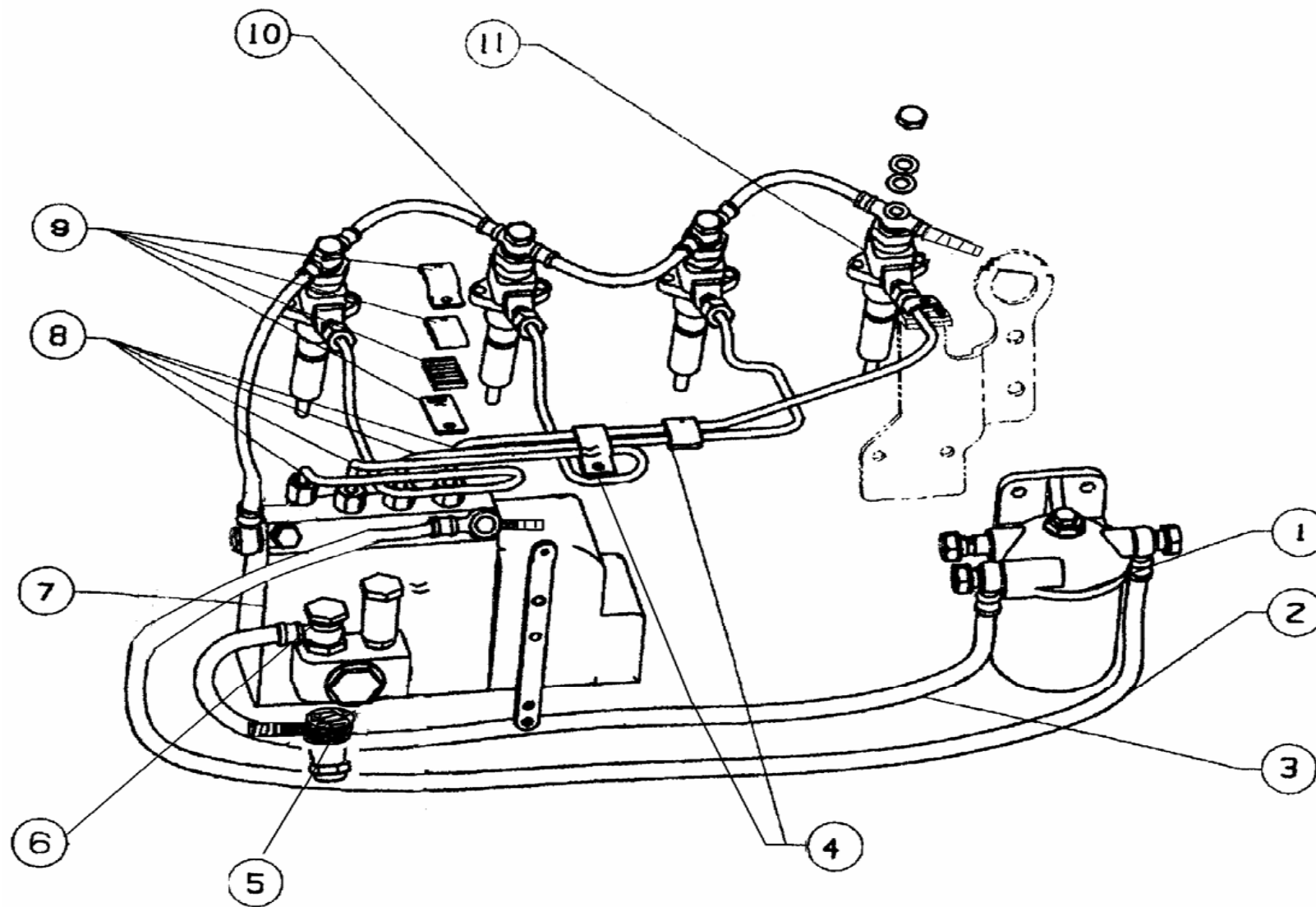
序号 Item	零件图号/规格 part No.	零件名称	Description	数量 Quantity				备注
				SD4M27	SD4M32	SD4BM33	SD4BM40	
1	1009031-1 M	油底壳密封垫片	Oil sump gasket	1	1	1	1	
2	1009010-3 MY-17	油底壳总成	Oil sump assy	1	1	1	1	
3	Q40108	平垫圈	Washer	28	28	28	28	
4	Q40408	轻型弹簧垫圈	Spring washer, light style	28	28	28	28	
5	Q150B0816	六角头螺栓	Hexagon-headed bolt	28	28	28	28	
6	1009023 M	油底壳放油螺塞	Oil drain plug-oil sump	1	1	1	1	
7	Q72318	垫圈	Washer	1	1	1	1	
8	1009060-5 M	上机油标尺管	Dipstick tube	1	1			
	1009060-1 M					1	1	
9	1009070 MY-17	机油标尺总成	Oil dipstick assy	1	1	1	1	

十、机油泵组件 LUBRICATING OIL PUMP ASSY



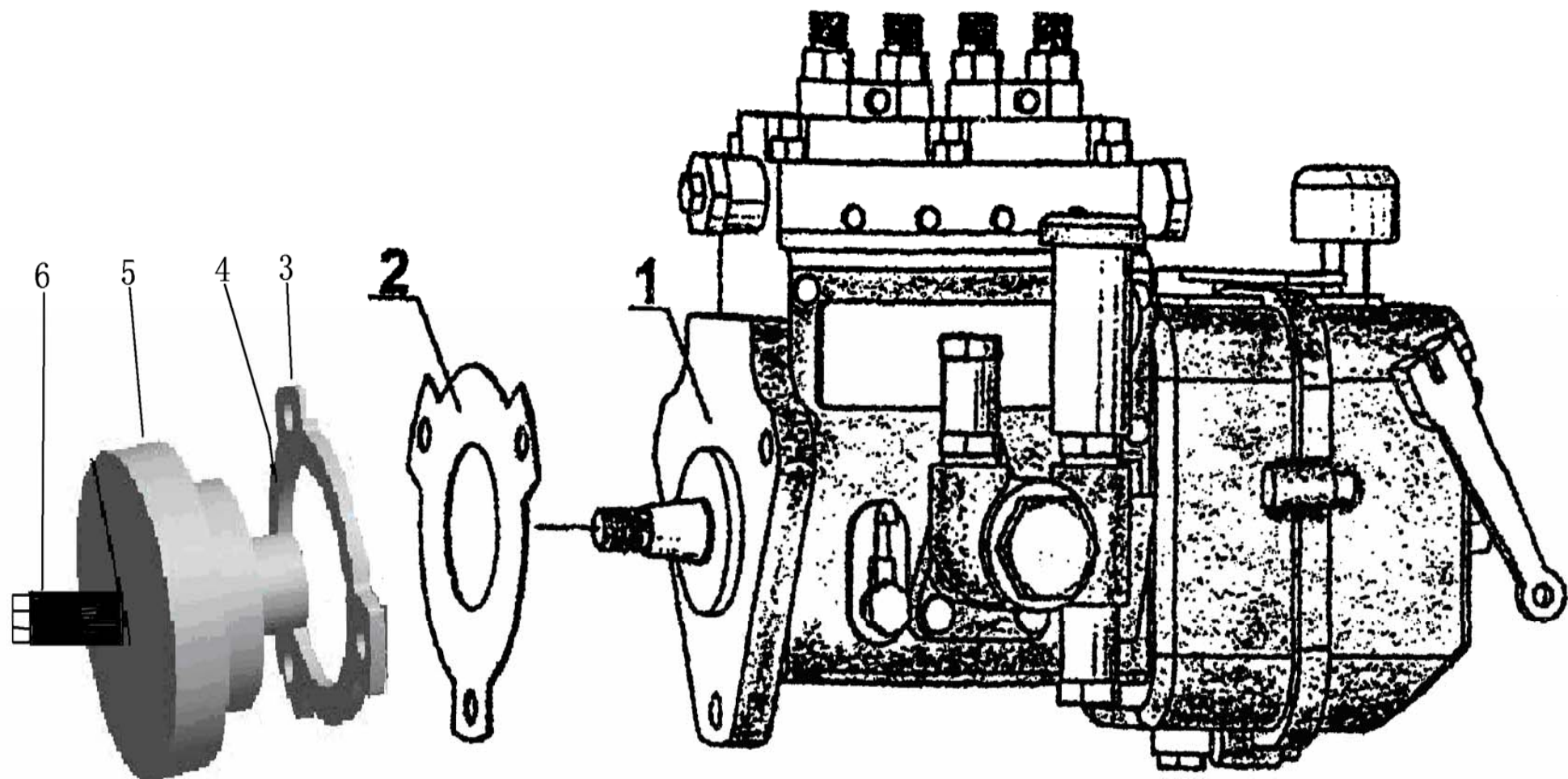
序号 Item	零件图号/规格 part No.	零件名称	Description	数量 Quantity				备注
				SD4M27	SD4M32	SD4BM33	SD4BM40	
1	1011010 M-02	机油泵	Pump body	1	1	1	1	
2	Q150B0820	六角头螺栓	Hexagon headed bolt	4	4	4	4	
3	Q40108	平垫圈	Washer	4	4	4	4	
4	1011011-1 M	垫片	Gasket	1	1	1	1	

十一、燃油管路 FUEL PIPING



序号 Item	零件图号/规格 part No.	零件名称	Description	数量 Quantity				备注
				SD4M27	SD4M32	SD4BM33	SD4BM40	
1	1117000-2 M	燃油滤清器总成	Fuel Filter assy	1	1	1	1	滤芯1117010 M
2	1104040_BWA-09	燃油管总成-柴滤至 喷油泵	Fuel deliner flexible pipe assy	1	1	1	1	
3	1104030_QS	燃油管总成-输油泵 至柴滤	Fuel deliner flexible pipe assy	1	1	1	1	
4	1129040 M	高压油管夹子(一)	High pressure fuel pipe clamp(一)	1	1	1	1	
	1129045 M	高压油管夹子(二)		1	1	1	1	
	1129050 M	高压油管夹子(二)		1	1	1	1	
5	1111107_BW	进油管接头体-油泵		1	1	1	1	
6	Q/XC3451.1-2002	铰接螺栓M14x1.5	Hollow screw M14x1.5	2	2	2	2	
7	1111000W_MD	喷油泵总成	Fuel injection pump assy	1	1			
	1111000W_M33D					1	1	
8	1129010/15/20/25_MD	高压油管总成	High pressure fuel pipe assyHigh pressure fule pipe clamp assy(二)	1	1			
	1129010/15/20/25_BMD					1	1	
9	1104050_BML-01	喷油体回油管总成	Fuel injector leak-off pipe clamp	1	1	1	1	
10	1112000S_BM	喷油器总成	Fuel injector	4	4	4	4	

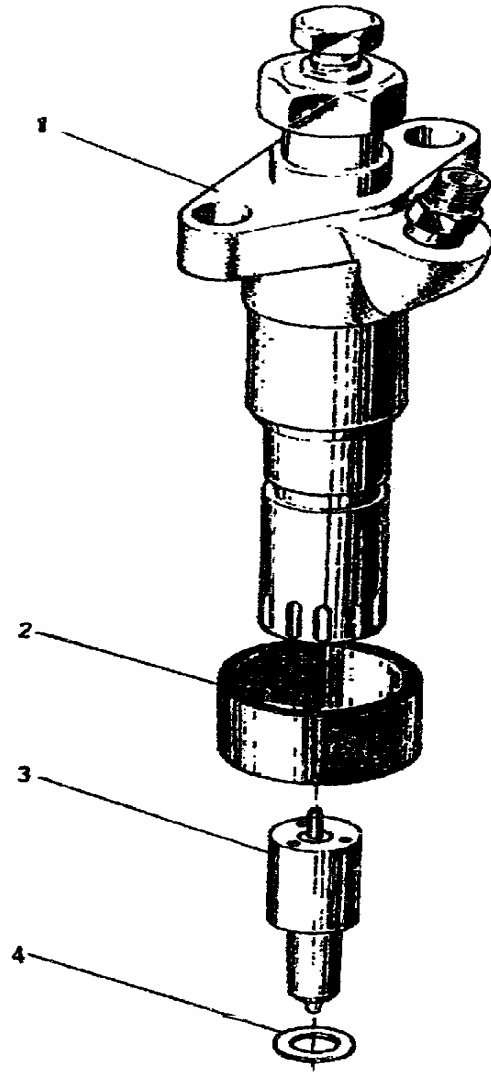
十二、喷油泵 FUEL INJECTION PUMP



序号 Item	零件图号/规格 part No.	零件名称	Description	数量 Quantity				备注
				SD4M27	SD4M32	SD4BM33	SD4BM40	
1	1111000 MD	喷油泵总成	Fuel injection pump assy	1	1	1	1	实际油泵带调节机构
2	1111014/WA	喷油泵法兰垫片	Gasket	1	1	1	1	
3	1111011 MD	喷油泵垫块		1	1	1	1	
4	1111012 MD	喷油泵连接盘垫片		1	1	1	1	图中缺少
5	1111013 MD	喷油泵正时齿轮连接盘		1	1	1	1	
6	1111014 MD	油泵凸轮轴螺母		1	1	1	1	

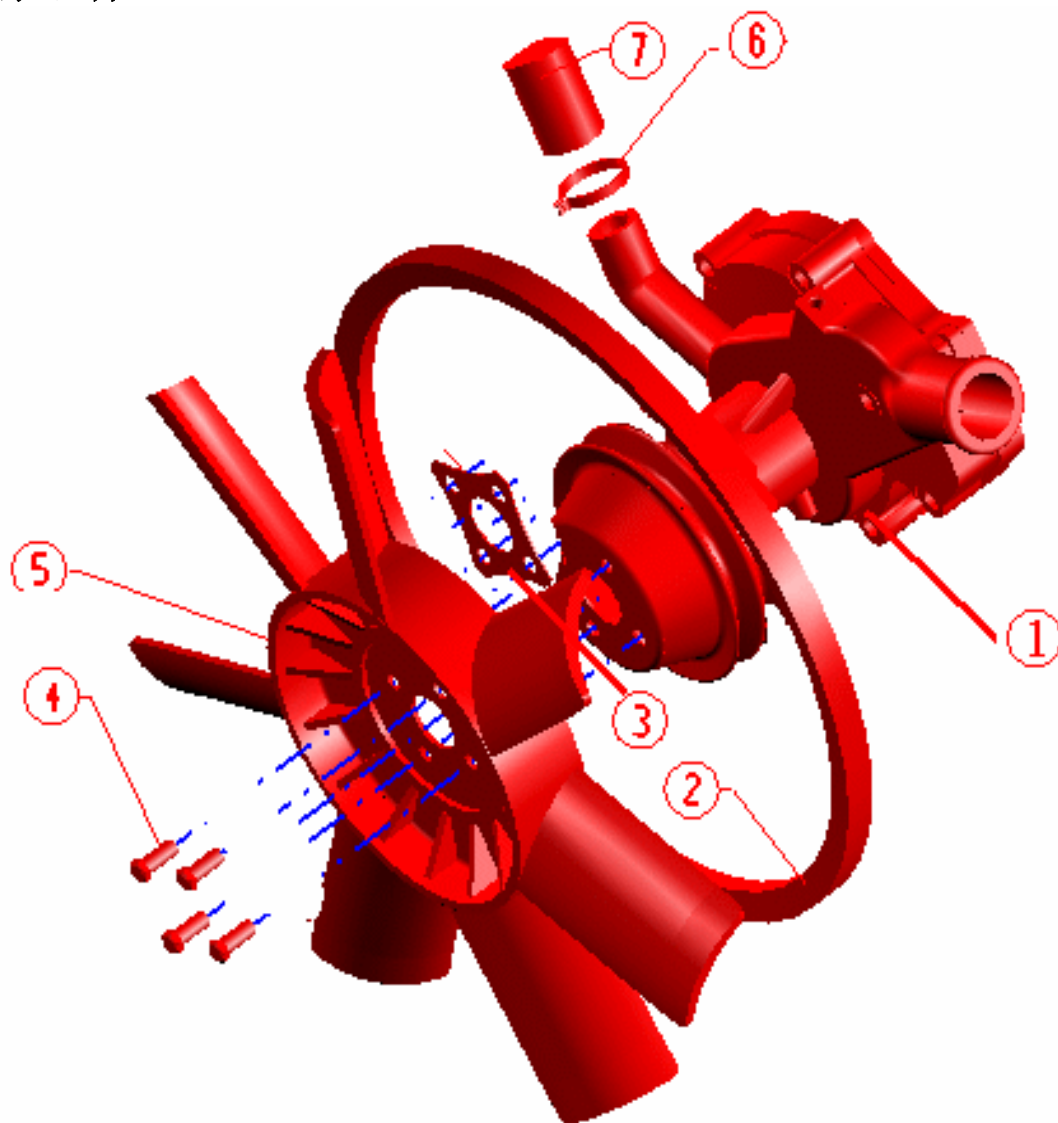
十三、喷油器

FUEL INJECTOR



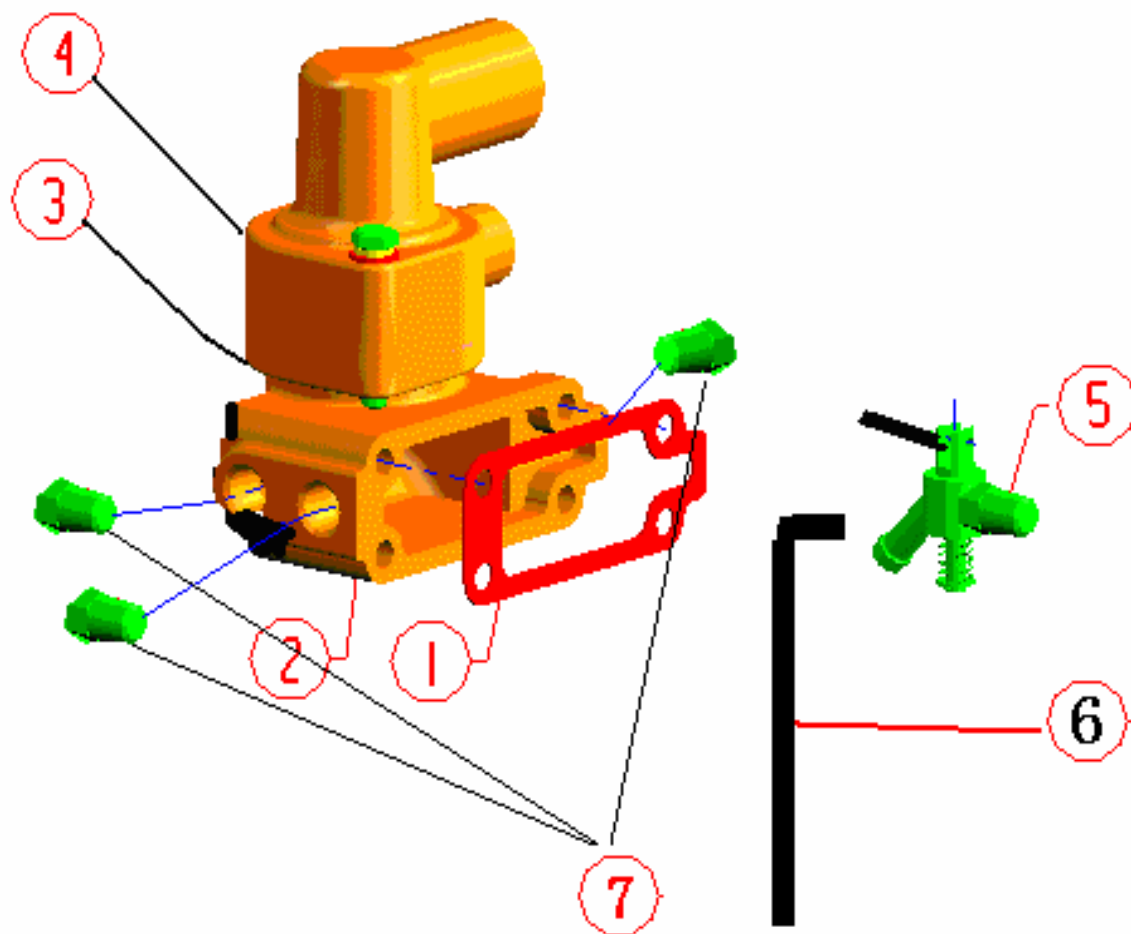
序号 Item	零件图号/规格 part No.	零件名称	Description	数量 Quantity				备注
				SD4M27	SD4M32	SD4BM33	SD4BM40	
1	1112000S BM	喷油器总成	Fuel injector assy	4	4	4	4	
2	1003056 MZ1	喷油器铜套	Copper sleeve	4	4	4	4	
3	1112020 BM	喷油器针阀偶件	Needle valve element	4	4	4	4	
4	1112308 6F	喷油器垫片	Washer	4	4	4	4	

十四、风扇、水泵组件 FAN AND COOLING WATER PUMP ASSY



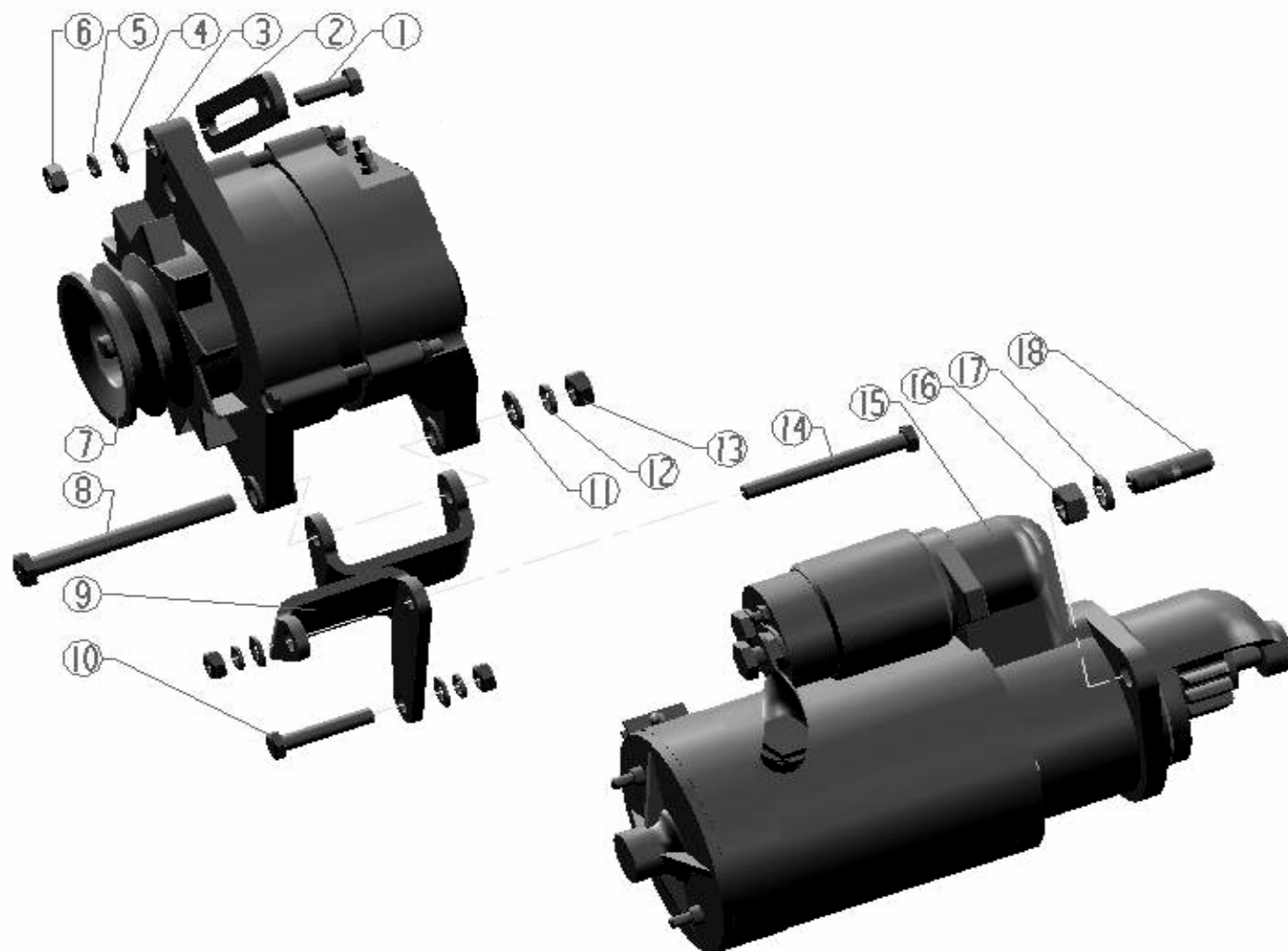
序号 Item	零件图号/规格 part No.	零件名称	Description	数量 Quantity				备注
				SD4M27	SD4M32	SD4BM33	SD4BM40	
1	1307010 MD	水泵	water pump	1	1	1	1	带皮带轮
	1307013 BM	水泵垫片	Gasket, water pump	1	1	1	1	图中缺少
2	1308032 MD	风扇皮带	fan belt	1	1	1	1	
3	1308047 BMY-13P	风扇皮带轮垫		1	1	1	1	厚度42
4	Q150B0816	六角头螺栓	Hexagon headed bolt	4	4	4	4	
	Q40308	弹簧垫圈	Spring washer	4	4	4	4	
	Q40108	平垫圈	Washer	4	4	4	4	
5	1308010 AMD	风扇总成	Fan	1	1	1	1	排风扇, 420
6	Q67632	环箍	Hoop	1	1	1	1	
7	2501001-1 BML-02B	回水口盖		1	1	1	1	

十五、节温器、放水开关组件 THERMOSTAT & WATER DRAINCOCK ASSY



序号 Item	零件图号/规格 part No.	零件名称	Description	数量 Quantity				备注
				SD4M27	SD4M32	SD4BM33	SD4BM40	
1	1306012 M	节温器壳垫片		1	1	1	1	
2	1306011-1 M	节温器壳		1	1	1	1	
3	1306014 M	节温器盖垫片	Gasket, thermostat cover	1	1	1	1	
4	1306013-2 M	节温器盖	Thermostat cover	1	1	1	1	
5	1305010 H	放水开关总成	Water drain assy	1	1	1	1	
6	1305018 H	放水开关出水橡胶管		1	1	1	1	
7	Q618B03	六角头锥形螺塞		3	3	3	3	

十六、发电机、起动机组件 ALTERNATOR & STARTER ASSY



序号 Item	零件图号/规格 part No.	零件名称	Description	数量 Quantity				备注
				SD4M27	SD4M32	SD4BM33	SD4BM40	
1	Q150B0822	六角头螺栓	Hexagon headed bolt	1	1	1	1	
2	3701325-1 M	连接板	Connecting plate	1	1	1	1	
	3701101/W	垫圈	Washer	1	1	1	1	
3	3701010-2 M	发电机总成	Generator assy	1	1	1	1	
4	Q40108	平垫圈	Washer	3	3	3	3	
5	Q40308	弹簧垫圈	Spring washer	3	3	3	3	
6	Q340B08	I型六角螺母	Hexagon nut, style I	3	3	3	3	
7	3701010 MZL-02	发电机总成	generator	1	1	1	1	
8	Q150B10130T F2	六角头螺栓	Hexagon headed bolt	1	1	1	1	
9	3701320-2 M	发电机支架总成	Generator bracket weld assy	1	1	1	1	24V
10	Q150B0845	六角头螺栓	Hexagon beaded bolt	1	1	1	1	
11	Q40108	平垫圈	Washer	2	2	2	2	
12	Q40308	弹簧垫圈	Spring washer	2	2	2	2	
13	Q340B08	I型六角螺母	Hexagon nut, style I	2	2	2	2	
14	Q150B0880	六角头螺栓	Hexagon headed bolt	1	1	1	1	
15	3708010-2 M	起动机总成	Starter assy	1	1	1	1	
16	Q340B12	I型六角螺母	Hexagon nut, style I	2	2	2	2	
17	Q40312	弹簧垫圈	Spring Washer	2	2	2	2	
18	Q1201225F3S	双头螺柱	Stud	2	2	2	2	

十七、水箱组件 WATER RADIATOR ASSY



序号 Item	零件图号/规格 part No.	零件名称	Description	数量 Quantity				备注
				SD4M27	SD4M32	SD4BM33	SD4BM40	
1	3922023 MD	风扇护罩		1	1	1	1	
2	Q67625	夹箍		1	1	1	1	
3	1306021 BWB-33	暖风接头		1	1	1	1	
4	2501006 Q	管接套		1	1	1	1	
5	3922022 MD	水箱进水胶管		1	1	1	1	
6	3922021 MD	水箱出水胶管		1	1	1	1	
7	Q67650	夹箍		4	4	4	4	