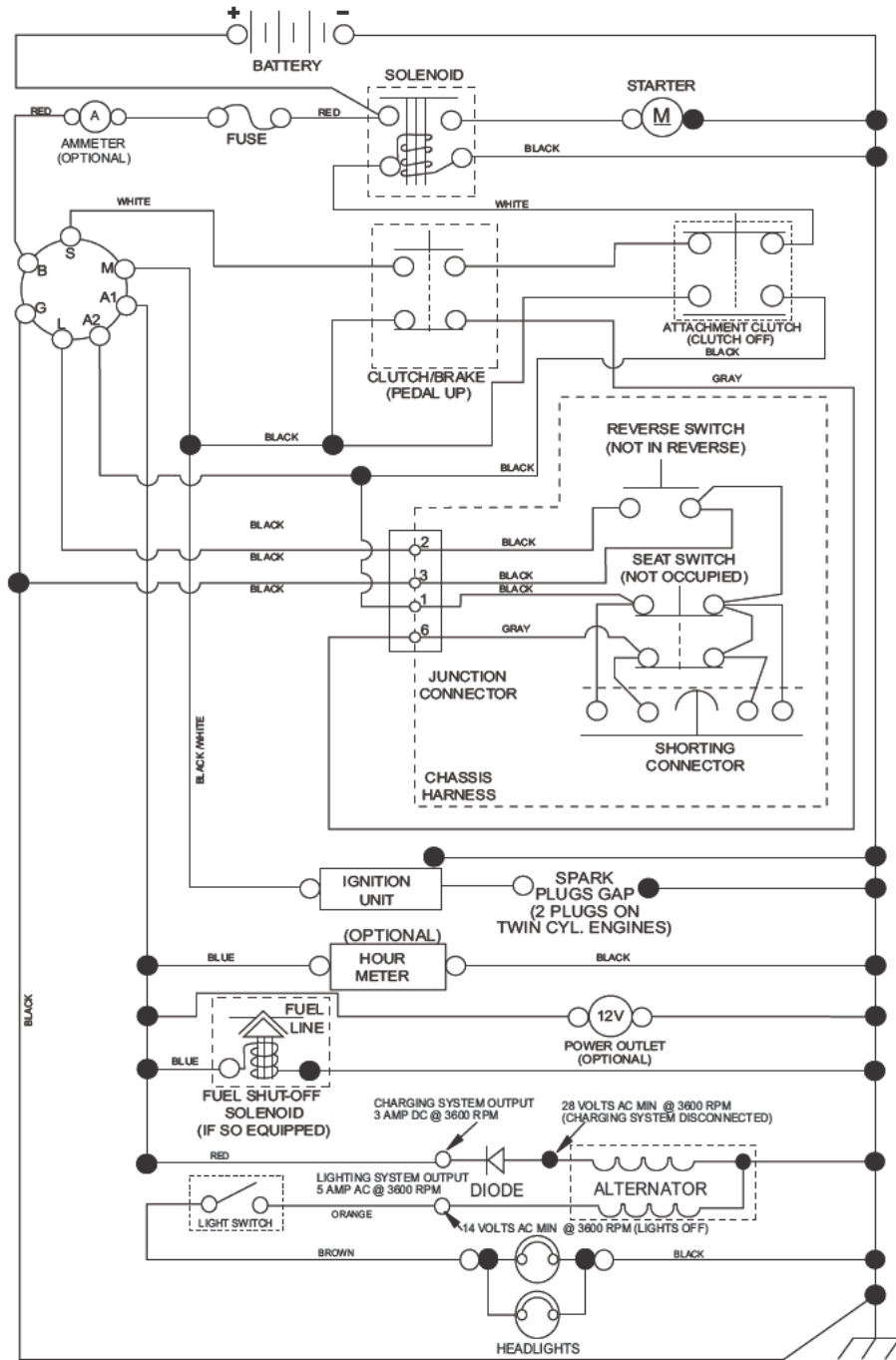


TRACTOR - - MODEL NUMBER 917.203900

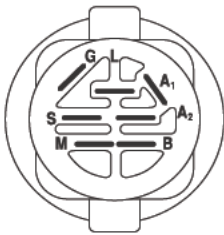
SCHEMATIC

SCH11



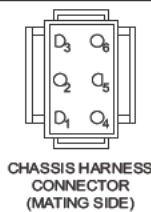
NOTE

YOUR TRACTOR IS EQUIPPED WITH A SPECIAL ALTERNATOR SYSTEM. THE LIGHTS ARE NOT CONNECTED TO THE BATTERY, BUT HAVE THEIR OWN ELECTRICAL SOURCE. BECAUSE OF THIS, THE BRIGHTNESS OF THE LIGHTS WILL CHANGE WITH ENGINE SPEED. AT IDLE THE LIGHTS WILL DIM. AS THE ENGINE IS SPEEDED UP, THE LIGHTS WILL BECOME THEIR BRIGHTEST.

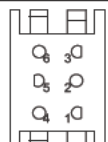


IGNITION SWITCH

POSITION	CIRCUIT	"MAKE"
OFF	M+G+A1	
RUN/OVERRIDE	B+A1	
RUN	B+A1	L+A2
START	B + S + A1	



CHASSIS HARNESS CONNECTOR (MATING SIDE)



DASH HARNESS CONNECTOR (MATING SIDE)

WIRING INSULATED CLIPS
NOTE: IF WIRING INSULATED CLIPS WERE REMOVED FOR SERVICING OF UNIT, THEY SHOULD BE RE-INSTALLED TO PROPERLY SECURE YOUR WIRING.

● NON-REMOVABLE CONNECTIONS

○ REMOVABLE CONNECTIONS

ELECTRICAL

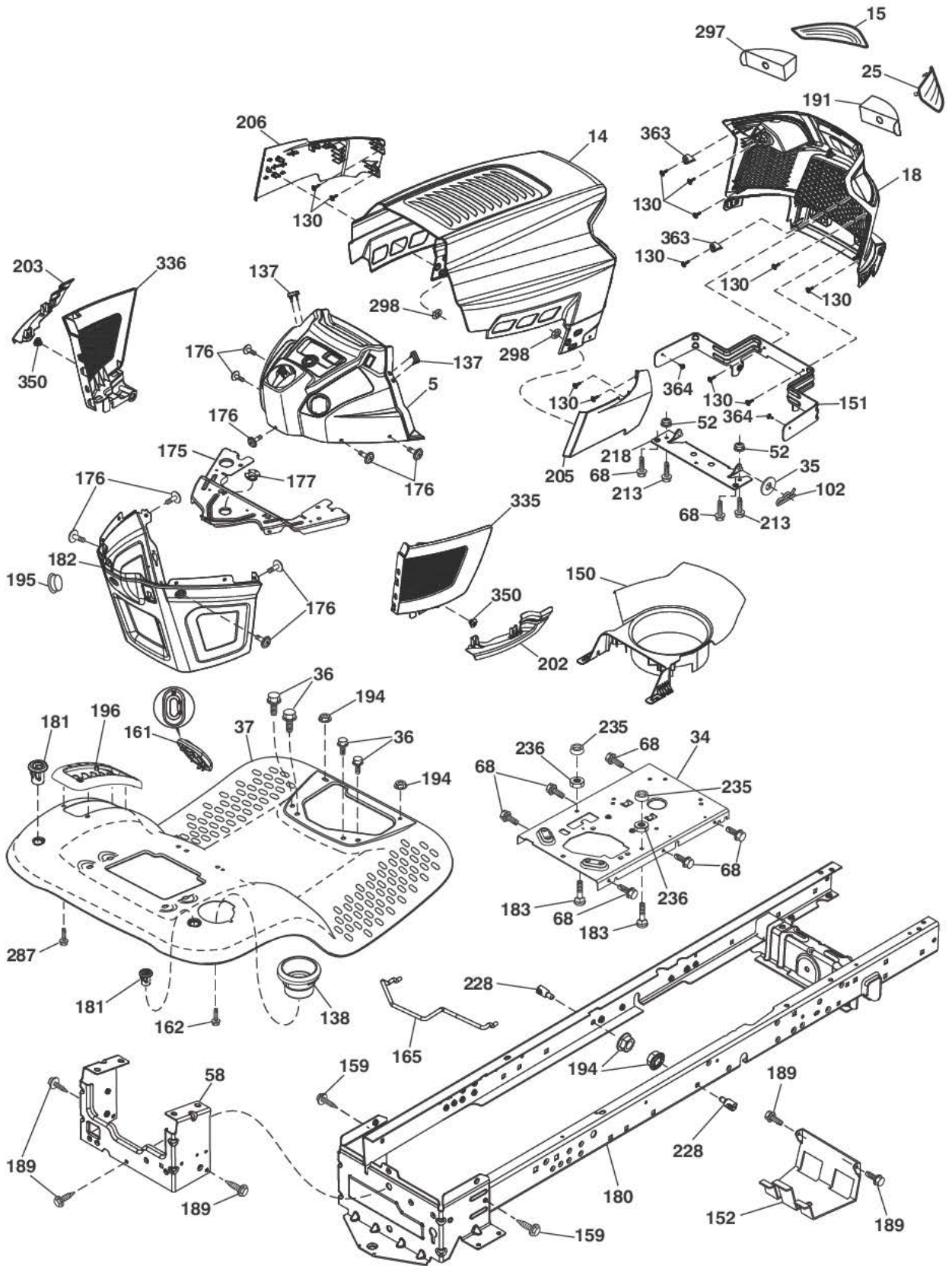
TRACTOR - - MODEL NUMBER 917.203900

KEY NO.	PART NO.	DESCRIPTION
1	163465	Battery
2	74760412	Bolt Hex Hd. 1/4-20 unc x 3/4
8	186491	Box Battery
16	176138	Switch Interlock Push-In
21	400252	Harness Socket Light w/4152J
22	4152J	Bulb Light
24	585555601	Cable Battery
25	585555601	Cable Starter
26	175158	Fuse
27	73510400	Nut Keps Hex 1/4-20 unc
28	416588	Cable, Ground
29	401545	Switch, Seat
30	193350	Switch, Ign.
33	411932	Key/Chain
34	110712X	Switch Light/Reset
40	401098	Harness Ign. Dash
41	17720408	Screw Thd. Cut 1/4-20 x 1/2
42	131563	Cover, Terminal
43	192507	Solenoid
46	401763	Gauge Hourmeter
55	17060512	Screw Thdrol. 5/16-18 x 3/4 TYTT
71	194276	Harness Ign.
79	175242	Socket Asm. Bulb Twistlock
87	197802	Switch Interlock
90	435395	Cover Terminal Battery
91	190270	Strap Battery Mount Front
99	17670412	Screw Hexwsh. Thdrol. 1/4-20 x 3/4
100	19091416	Washer 9/32 x 7/8 x 16 Ga.
102	581023401	Harness Pigtail
105	407568	Switch Reverse TT Pedal Control

NOTE: All component dimensions given in U.S. inches
1 inch = 25.4 mm

TRACTOR - - MODEL NUMBER 917.203900

CHASSIS ASSEMBLY



chassis-tex_TALON II_2

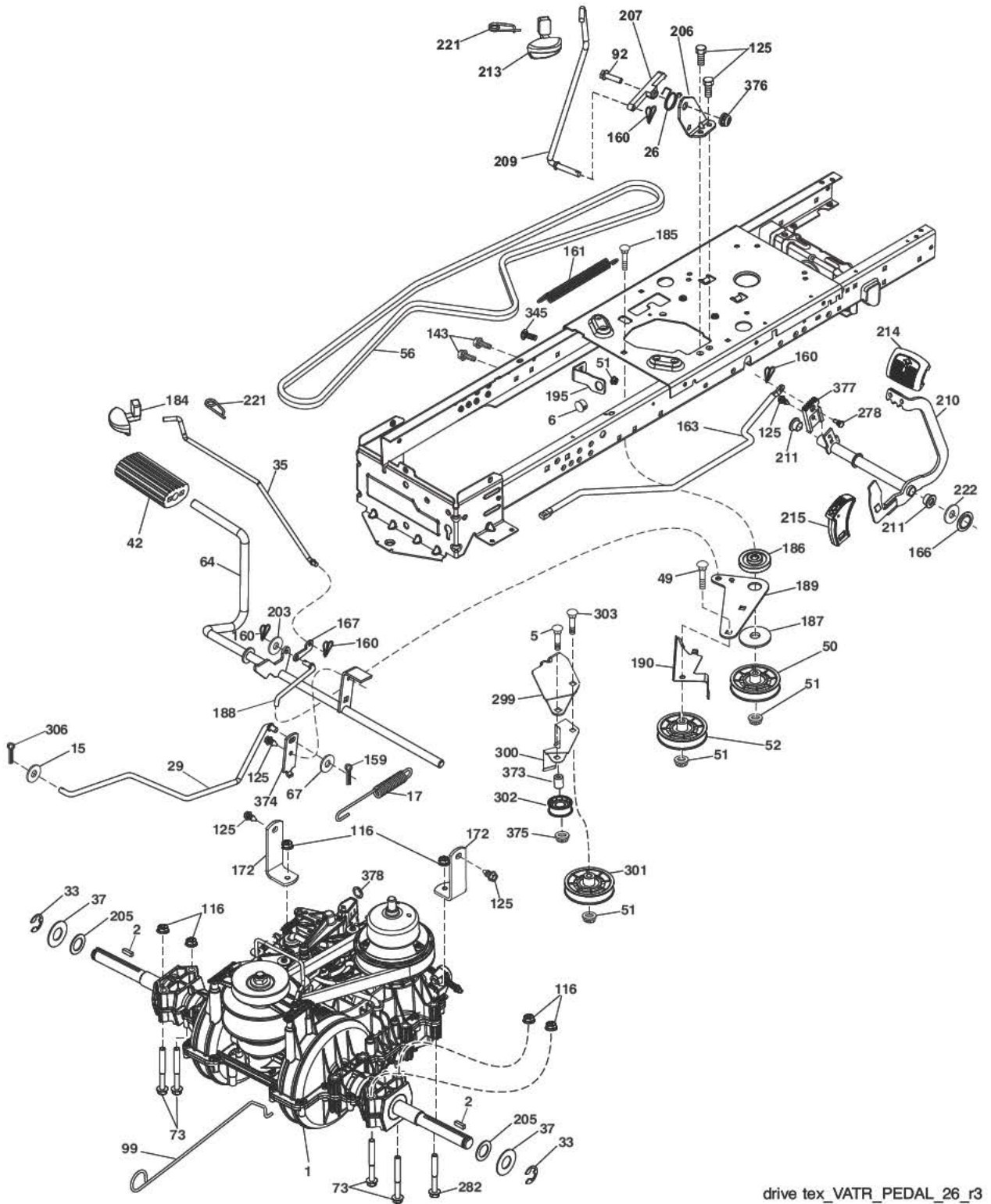
TRACTOR - - MODEL NUMBER 917.203900
CHASSIS ASSEMBLY

KEY PART NO. NO.	DESCRIPTION	
5	580485803	Dash
14	580354406	Hood
15	580485601	Lens LH
18	580485302	Grille
25	580484501	Lens RH
34	580910801	Plate engine
35	191111116	Washer 11/32 x 11/16 x 16 Ga.
36	17060512	Screw 5/16-18 x 3/4
37	414878X615	Fender
52	73680500	Nut Crown lock 5/16-18
58	412280	Drawbar
68	17490508	Screw Thdrol 5/16-18 x 1/2
102	4497H	Retainer Spring 1"
130	416358	Screw # 10 x .750 BOS Thread
137	407590	Bumper Dash
138	193224X428	Cupholder
150	585238002	Duct Heat Hood
151	580663302	Bracket Pivot
152	199535	Shield Browning/Debris
159	17000612	Screw Hexwsh Thdrol 3/8-16 x 3/4
161	193229X428	Window Fuel
162	142432	Screw Hex Wsh Hi-Lo 1/4 x 1/2
165	196826	Support Tank Rear
175	196304	Crossmember
176	400776	Screw 10-24 x 5/8 Wshd Qdrx
177	195227	Bushing Steering
180	415063	Chassis
181	193102X428	Bushing Mtg. Fender Crgo.
182	406859	Dash Lower
183	74520520	Bolt 5/16-18 x 1-1/4
189	17000512	Screw 5/16-18 x 3/4
191	580485101	Mylar Headlight RH
194	73900500	Nut Lock Hex Flange 5/16-18
195	401556X428	Plug Hole Dash 12V Adapter
196	431658	Console Asm. Deck Lift
202	580485001	C-Closeout Lwr Trm RH
203	580484801	C-Closeout Lwr Trm LH
205	580843706	Assembly Corner RH
206	580843806	Assembly Corner LH
213	74760512	Bolt hex HD 5/16-18 unc x 3/4
218	580897301	Pivot Hood Assy
228	195161	Stud Fastener
235	406129	Spacer Fender
236	73930500	Nut Center Lock 5/16-18
287	17600406	Screw Hex Washhead 1/4-20 x 3/8
297	580484901	Mylar Headlights LH
298	580851001	Nut Push
335	580484602	C-Side Closeout RH
336	580484402	C-Side Closeout LH
350	445143	Clip X-Mass Tree
363	580724501	Cap Talon Grille
364	17060408	Screw

NOTE: All component dimensions given in U.S. inches
1 inch = 25.4 mm

TRACTOR - - MODEL NUMBER 917.203900

GROUND DRIVE



drive tex_VATR_PEDAL_26_r3

TRACTOR - - MODEL NUMBER 917.203900

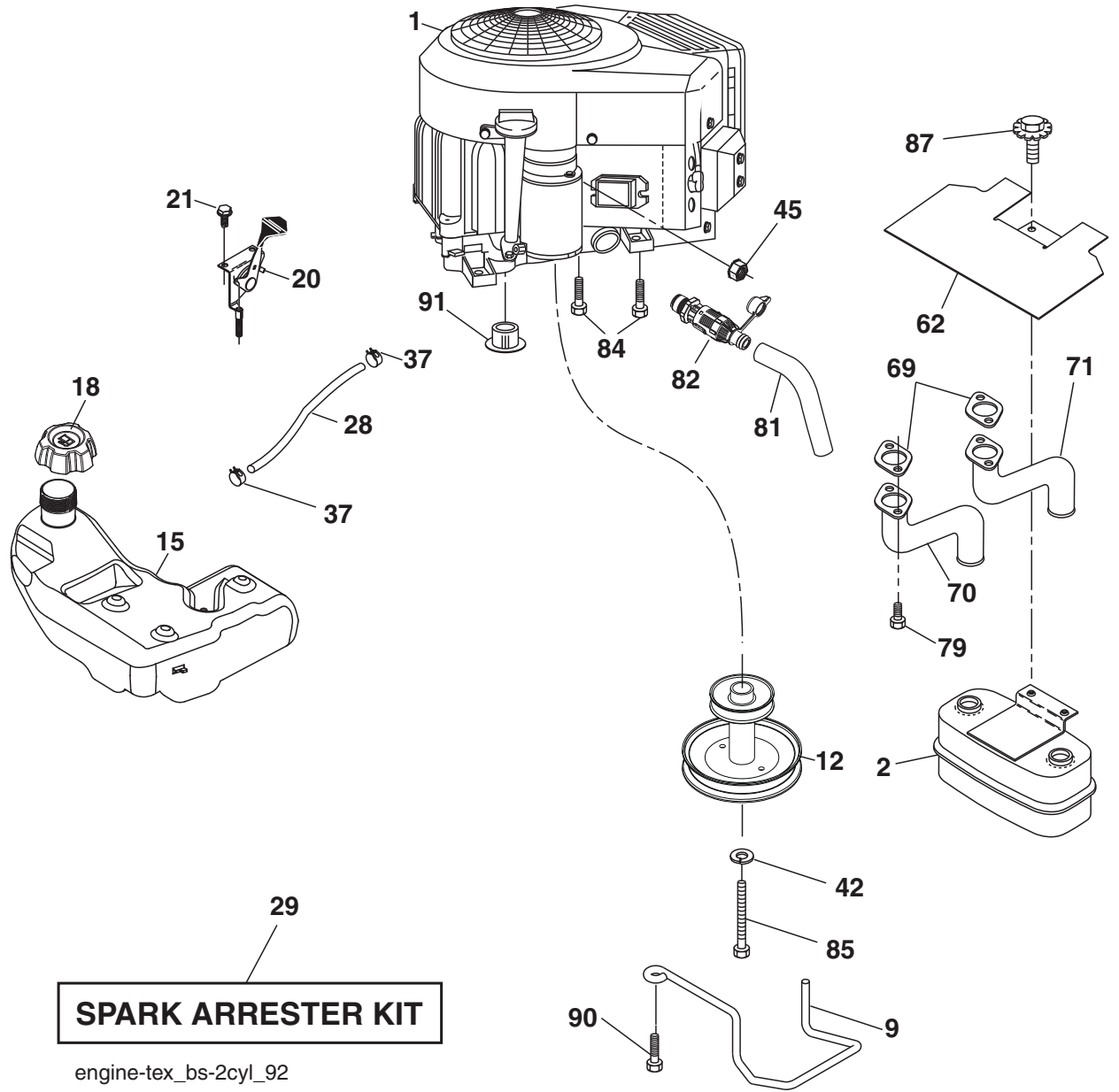
GROUND DRIVE

KEY PART NO. NO.	DESCRIPTION	KEY PART NO. NO.	DESCRIPTION
1	----- Transmission, Variator SD Pedal (584973901) (See tran- saxle breakdown.)	187	19133210 Washer 13/32 x 2 x 10 Ga.
2	123583X Key Square	188	194323 Link Clutch Ground Drive
5	74760636 Bolt Hex HS 3/8-16 unc	189	194317 Bellcrank Groundrive Nstg/Nstl
6	124028X Bushing Snap	190	194318 Keeper Bellcrank Drive Ground
15	19131316 Washer 13/32 x 13/16 x 16 Ga.	195	581504601 Brake Bracket
17	584954001 Spring Brake	203	19111116 Washer 11/32 x 11/16 x 16 Ga.
26	199679 Spring Return Cruise	205	121748X Washer 25/32 x 1-5/8 x 16 Ga.
29	58482310 Rod Brake	206	448596 Bracket Mount Latch Cruise
33	12000001 E-Ring	207	448264 Latch Control Cruise
35	583864501 Rod Brake Parking	209	199592 Rod Control Cruise
37	188967 Washer Harden .793x1.637x060	210	448270 Weldment Pedal
42	8883R Cover Pedal Blk Round	211	120183X Bearing Nylon
49	72110614 Bolt Rdhd 3/8-16 unc x1-3/4 Gr.5	213	196441X428 Knob Control Cruise
50	194327 Idler.Flat	214	421263 Pedal Forward Pad
51	73900600 Nut Hex Flangelock 3/8-16	215	448254 Cap Pedal Reverse
52	194326 Idler V-Groove Offset	221	403187 Retainer Spring Clip Handle
56	197253 Belt Drive	222	79212010 Washer 21/32 x 1-1/4 10 Ga.
64	448353 Shaft Asm. Pedal Brake	278	580369101 Bolt Cruise Variator
67	19131312 Washer 13/32 x 13/16 x 12 Ga.	282	74490548 Screw Thdrol 5/16-18 x 3
73	74490544 Bolt Hex Flghd 5/16-18 Gr. 5	299	415683 Bracket Mount Idler
92	74760520 Bolt	300	415681 Keeper Idler Rear
99	435935 Rod Bypass	301	415680 Pulley Idler V-Groove
116	73900500 Nut Lock Hex Flange 5/16-18 unc	302	581420501 Pulley Idler Flat 2.0 Od
125	17000512 Screw 5/16-18 x 3/4 Smgml Tap/Bl	303	72110618 Bolt Rdhd Sgnk 3/8-16 x 2-1/4
143	17490508 Screw Thdrol 5/16-18 x 1/2 Tytt	306	76020416 Cotter Pin
159	76020412 Pin Cotter 1/8 x 3/4	345	72110606 Bolt Rdhd Sgnk 3/8-16 x 1 Gr. 5
160	169484 Retainer Clip(M) Dia. 290	373	581461801 Spacer Idler
161	105709X Spring Return Clutch 6.75	374	581475201 Bracket Brake Arm
163	583971301 Rod Control Pedal	375	73680600 Nut Crownlock 3/8-16 unc
166	429164 Nut Push .625	376	426589 Nut Flange Hex 5/16 x 18
167	405257 Latch Brake Parking	377	584303401 Gear Sector
172	583974201 Strap Torque LH/RH	378	584287701 Nut Push 8 mm
184	196439X667 Handle Parking Brake		
185	72110622 Bolt Rdhd 3/8-16 unc x2-3/4 Gr.5		
186	194321 Spacer Retainer		

NOTE: All component dimensions given in U.S. inches
1 inch = 25.4 mm

TRACTOR - - MODEL NUMBER 917.203900

ENGINE



TRACTOR - - MODEL NUMBER 917.203900

ENGINE

KEY PART NO.	PART NO.	DESCRIPTION
1	---	Engine B&S Model No. 44R677-0021-G1 (586204301)(See engine breakdown.)
2	149723	Muffler
9	194319	Keeper Belt Engine
12	401985	Pulley Engine
15	438080	Tank Fuel
18	430214	Cap Fuel
20	421473X428	Control Throttle/Choke
21	416358	Screw 10 x .750 BOS Thread
28	401137	Fuel Line
29	137180	Spark Arrester Kit
37	123487X	Clamp Hose
42	10040700	Washer Lock 7/16
45	73510400	Nut Keps Hex 1/4-20 unc
62	434017	Shield Heat
69	165391	Gasket
70	581881101	Exhaust Tube LH
71	581881001	Exhaust Tube RH
79	183906	Screw 5/16-18 x 1
81	148456	Tube Drain Oil
82	428287	Valve Oil Drain
84	17060620	Screw 3/8-16 x 1-1/4
85	173937	Bolt Hex 7/16-20 x 4 x Gr. 5-1.5
87	171877	Bolt 5/16-18 unc x 3/4 w/Sems
90	17000616	Screw 3/8-16 x 1.0
91	187495	Bushing

NOTE: All component dimensions given in U.S. inches
1 inch = 25.4 mm

For engine service and replacement parts, call the toll free number for your engine manufacturer listed below:

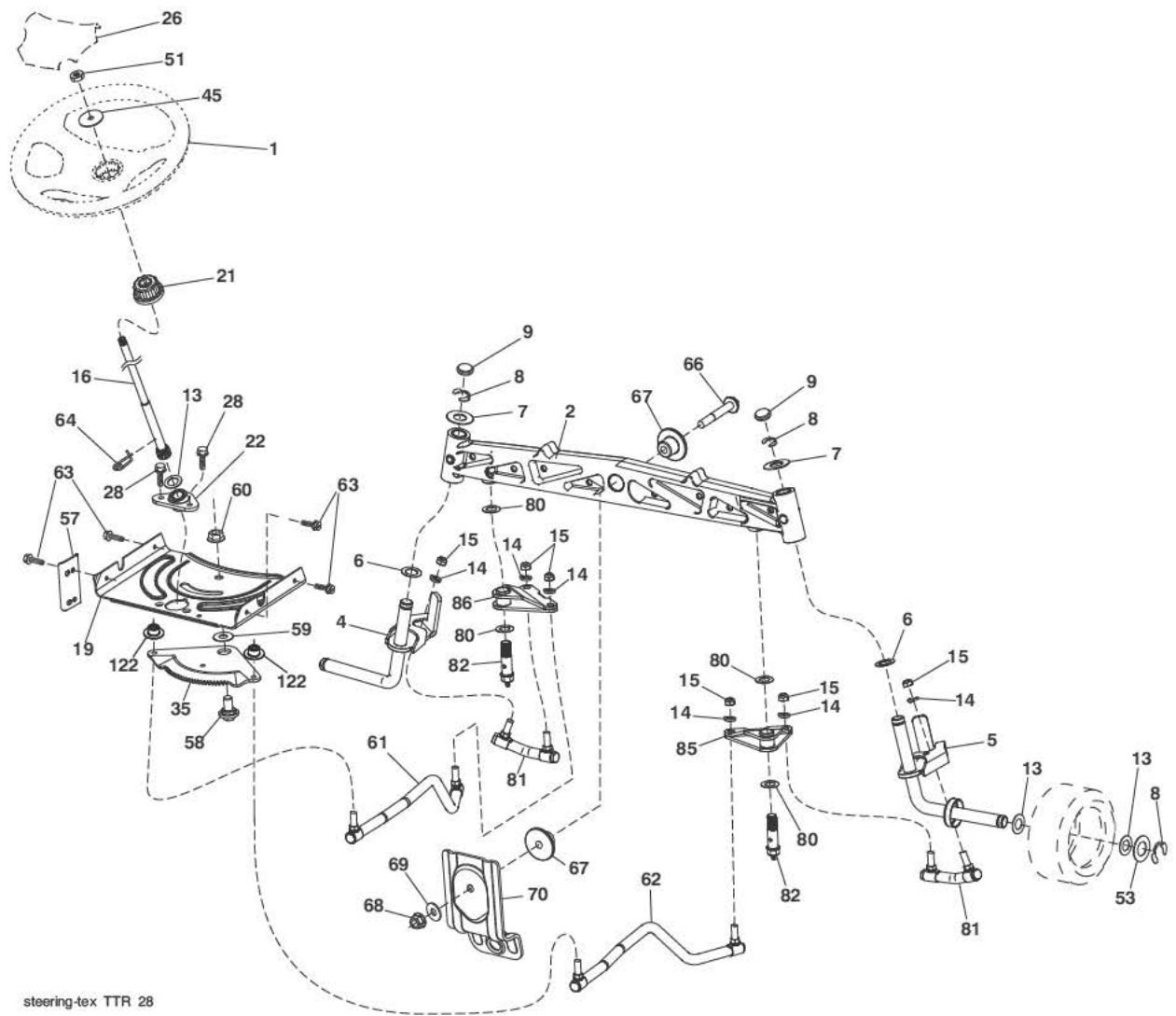
Briggs & Stratton 1-800-233-3723

Engine Power Rating Information

The gross power rating for individual gas engine models is labeled in accordance with SAE (Society of Automotive Engineers) code J1940 (Small Engine Power & Torque Rating Procedure), and rating performance has been obtained and corrected in accordance with SAE J1995 (Revision 2002-05). Torque values are derived at 3060 RPM; horsepower values are derived at 3600 RPM. Actual gross engine power will be lower and is affected by, among other things, ambient operating conditions and engine-to-engine variability. Given both the wide array of products on which engines are placed and the variety of environmental issues applicable to operating the equipment, the gas engine will not develop the rated gross power when used in a given piece of power equipment (actual "on-site" or net power). This difference is due to a variety of factors including, but not limited to, accessories (air cleaner, exhaust, charging, cooling, carburetor, fuel pump, etc.), application limitations, ambient operating conditions (temperature, humidity, altitude), and engine-to-engine variability. Due to manufacturing and capacity limitations, Briggs & Stratton may substitute an engine of higher rated power for this Series engine.

TRACTOR - - MODEL NUMBER 917.203900

STEERING ASSEMBLY



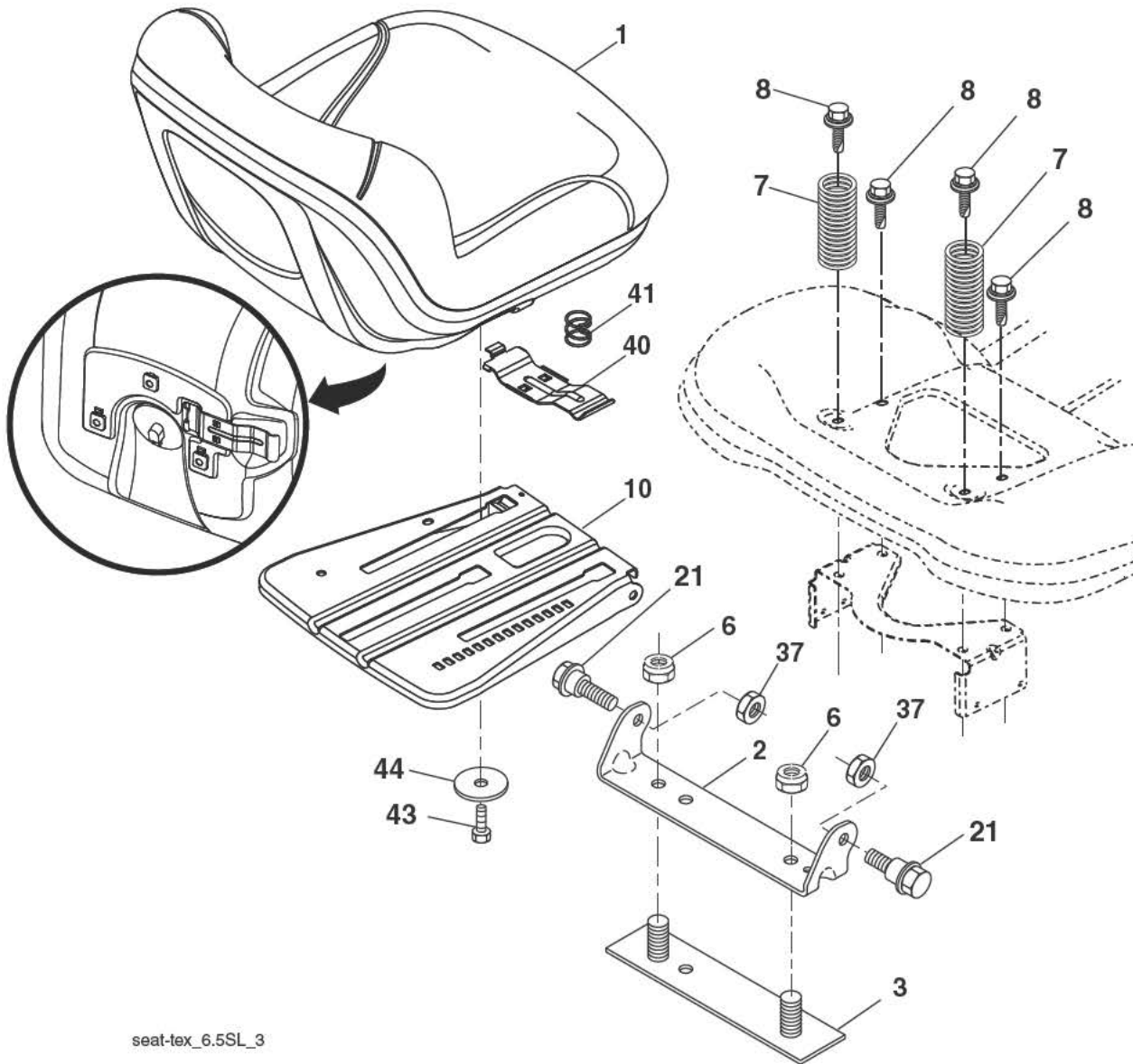
steering-tex TTR 28

KEY PART NO.	NO.	DESCRIPTION	KEY PART NO.	NO.	DESCRIPTION
1	414851X428	Wheel, Steering	58	194747	Bolt Shoulder Sector Pivot CFM
2	436870	Axle Asm., Front	59	194748	Washer Thrust Sector Steering
4	436873	Spindle Asm., LH	60	73971000	Nut Flange Lock 5/8-11
5	436874	Spindle Asm., RH	61	436884	Draglink, LH
6	6266H	Washer Thrust 0.75 x 1.23	62	436885	Draglink, RH
7	121748X	Washer 25/32 x 1-5/8 x 16 Ga.	63	17000512	Screw 5/16-18 x 3/4
8	12000029	Ring, Clip #T5304-75	64	199849	Retainer Clip Spring Steering
9	184946X667	Cap, Spindle	66	71020748	Bolt Hex Fghd 7/16-14 x 3 Serr
13	121749X	Washer 25/32 x 1-1/4 x 16 Ga.	67	194737	Bushing PM Front Axle
14	10040600	Washer Lock 3/8	68	73900700	Nut Lock Flange 7/16-14 Gr. 5
15	73540600	Nut, Crown Lock 3/8-24 unf	69	199162	Washer 1.5 x .505 x .118
16	440785	Shaft Steering	70	196197	Bracket Deck Susp. Front
19	194729	Plate Steering	80	1370H	Washer Thrust 5/8 x 1.10 x 1/32
21	437747	Adapter, Wheel Steering	81	436887	Link Cross RH
22	194845	Bushing, Strg. Blk	82	442147	Pivot Bolt
26	414852X428	Insert, Wheel Steering	85	441873	Pivot RH
28	17000612	Screw 3/8-16 x 3/4	86	441872	Pivot LH
35	440770	Gear, Sector Plate	122	444962	Cap Gear
45	19183812	Washer 9/16 I.D. x 2-3/8 O.D.			
51	73940800	Nut Hex Jam Toplock 1/2-20			
53	188967	Washer Hardened .793x1.637x.060			
57	407465	Bracket Upstop			

NOTE: All component dimensions given in U.S. inches
1 inch = 25.4 mm

TRACTOR - - MODEL NUMBER 917.203900

SEAT ASSEMBLY



seat-tex_6.5SL_3

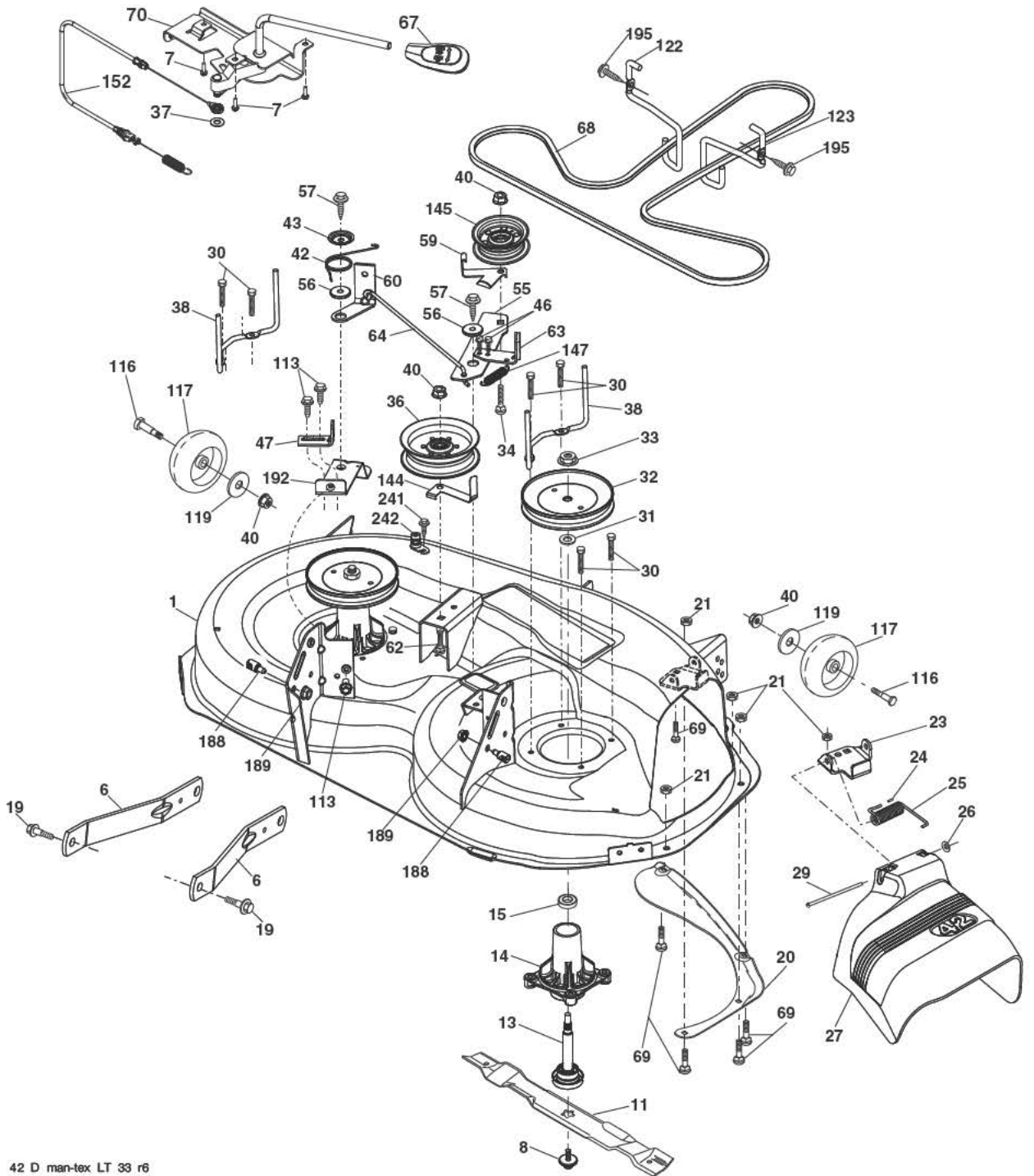
KEY PART NO.	PART NO.	DESCRIPTION
1	423645	Seat
2	180166	Bracket Pivot Fender
3	140675	Strap, Asm Fender
6	73800600	Nut, Lock W/Ins. 3/8-16 unc
7	124181X	Spring, Seat Cprsn
8	171877	Bolt 5/16-18 unc x 3/4 w/Sems
10	196977	Pan, Seat
21	171852	Bolt, Shoulder 5/16-18
37	73800500	Nut, Lock 5/16-18 unc

KEY PART NO.	PART NO.	DESCRIPTION
40	197661	Handle Slide Seat
41	198200	Spring Latch Seat
43	74760612	Bolt 3/8-16 x 3/4
44	19133812	Washer 13/32 x 2-3/8 x 12 Ga.

NOTE: All component dimensions given in U.S. inches
1 inch = 25.4 mm

TRACTOR - - MODEL NUMBER 917.203900

MOWER DECK



42 D man-tex LT 33 r6

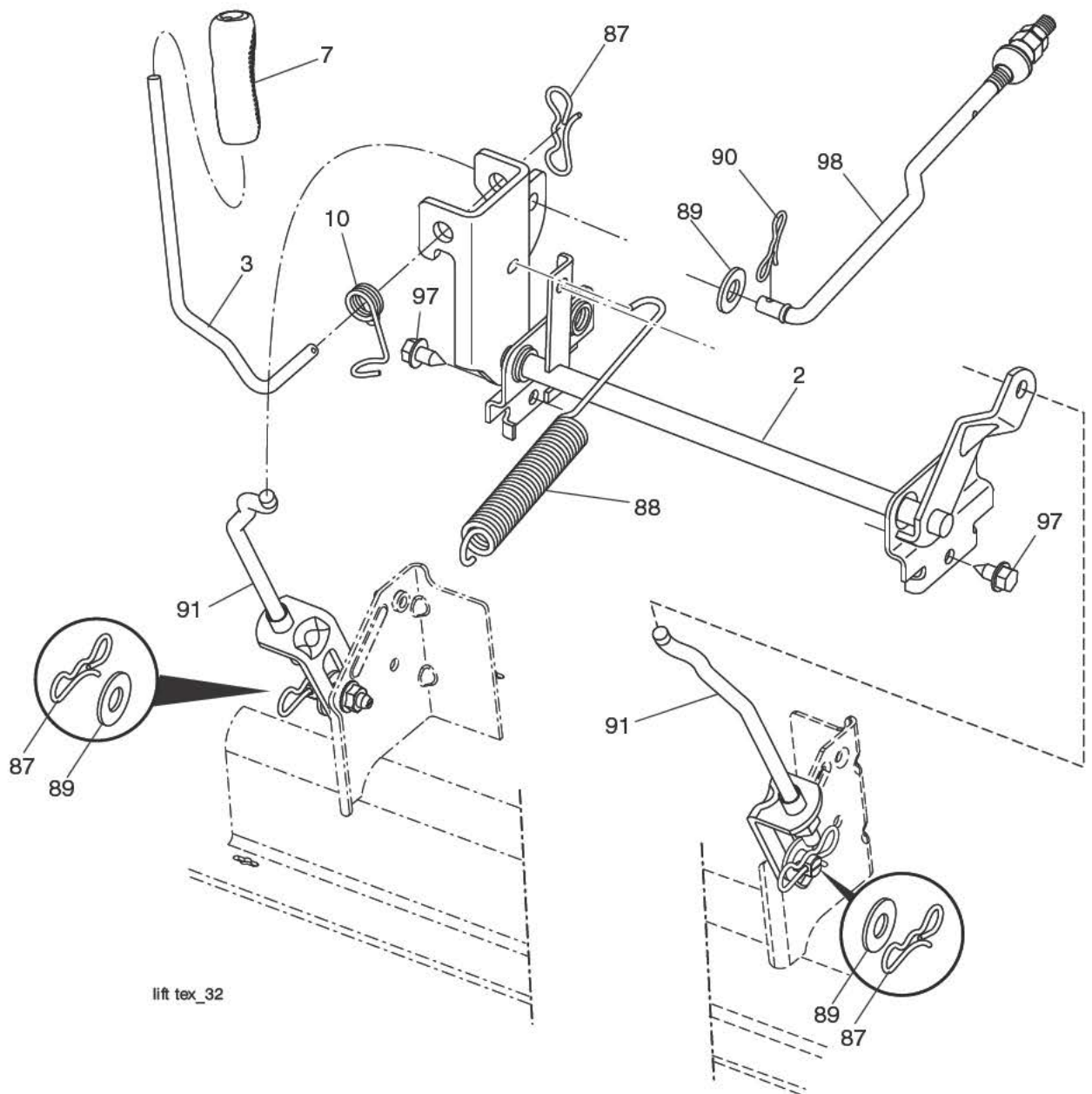
TRACTOR - - MODEL NUMBER 917.203900

MOWER DECK

KEY NO.	PART NO.	DESCRIPTION	KEY NO.	PART NO.	DESCRIPTION
1	196495	Deck Weldment Mower	63	199477	Arm Brake Mower
6	195186	Arm Suspension	64	199790	Link Brake Asm
7	416358	Screw #10 x .750 BOS Thread	67	198398X667	Handle Clutch Cable
8	193003	Bolt/Washer asm 7/16-20 unf	68	429636	Drive, Belt
11	424752	Blade, 42" 3NI	69	72140505	Bolt
13	192872	Shaft Assembly, Mandrel	70	199972	Clutch Asm Manual
14	187281	Housing, Mandrel	113	17000510	Bolt 5/16-18
15	110485X	Bearing, Ball, Mandrel	116	4898H	Bolt, Shoulder
19	196539	Bolt, Shoulder	117	188606	Wheel, Gauge
20	159770	Baffle Vortex	119	19121414	Washer 3/8 x 7/8 x 14 Ga.
21	73680500	Nut, Crownlock 5/16-18 unc	122	197258	Keeper Belt Engine LH
23	192557	Bracket, Deflector	123	197259	Keeper Belt Engine RH
24	105304X	Cap, Sleeve	144	199204	Keeper Belt
25	197026	Spring, Torsion, Deflector	145	193197	Pulley Idler, Flat
26	110452X	Nut, Push	147	401971	Spring Return
27	424469	Shield, Deflector	152	584243501	Manual Clutch Cable
29	131491	Rod, Hinge	188	195161	Stud Fastener
30	173984	Screw Thdrol Rolling Wsh Hd	189	73900500	Nut Lock Hex Flange
31	187690	Washer, Spacer	192	197260	Bracket Brake Stand LH
32	197473	Pulley, Mandrel	195	17000612	Screw Hex Wsh Thdr 3/8-16 x 3/4
33	400234	Nut, Toplock, Flanged			Screw TT #10-32.5. 3/8 Flange
34	72110612	Bolt Carr Sh. 3/8-16 x 1-1/2 Gr. 5	241	152927	Port Washout
36	197379	Pulley, Idler	--	416405	Coupling Quick Connect
37	19131316	Washer	--	192870	Mandrel Assembly (Includes housing (key #14), shaft assembly (key #13), and bearing only (key #15) - pulley/nut/washer and blade bolt/washers not included)
38	432520	Keeper Belt LH Mandrel			Replacement Mower, Complete
40	73900600	Nut, Lock Flg. 3/8-16 unc			
42	198410	Spring Torsion Brake			
43	197256	Spring Torsion Retainer			
46	137729	Screw Thd Roll 1/4-20 x 5/8	--	425415	
47	197250	Bracket Clutch Cable			
55	437110	Arm, Idler			
56	199092	Spacer, Retainer			
57	17000616	Screw 3/8-16 x 1			
59	141043	Guard, Tuv Idler			
60	197261	Arm Brake Mower			
62	72110616	Bolt Rd Hd Sq Nk 3/8-16 unc x 2			

NOTE: All component dimensions given in U.S. inches
1 inch = 25.4 mm

TRACTOR - - MODEL NUMBER 917.203900
LIFT ASSEMBLY



lift tex_32

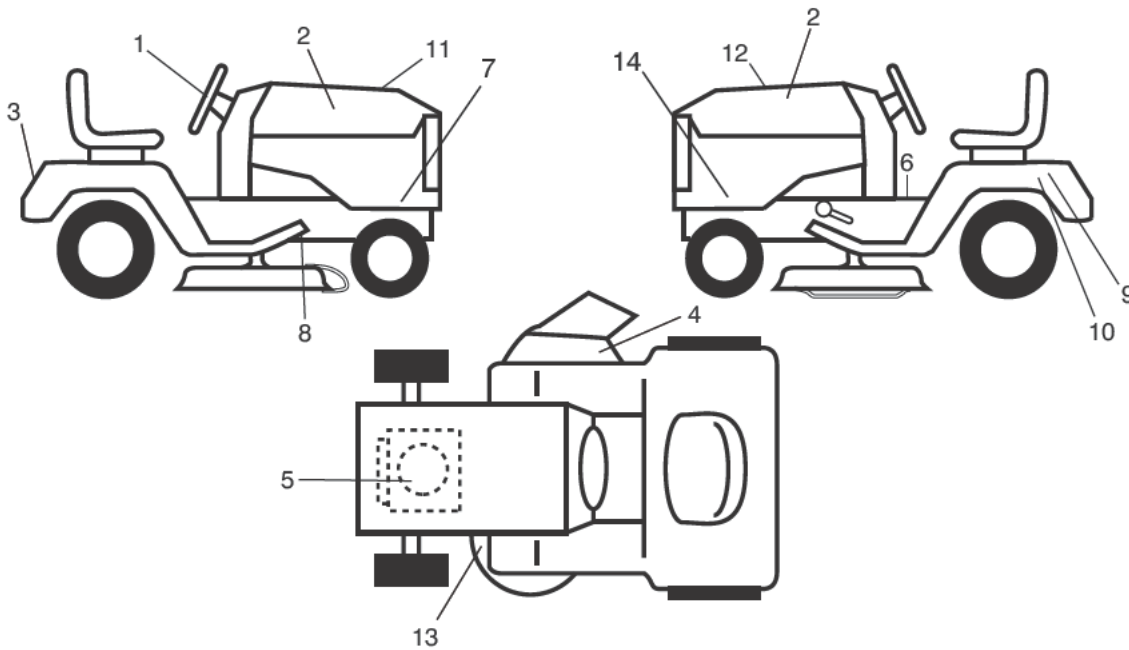
KEY NO.	PART NO.	DESCRIPTION
2	422027	Shaft Asm., Lift
3	426896	Lever Asm., Lift Rh
7	445060X428	Grip, Lever
10	196314	Spring Torsion
87	194209	Pin Cotter 7/16 Bow Tie Lock
88	410710	Spring Lift Assist
89	19191912	Washer Clear Zinc

KEY NO.	PART NO.	DESCRIPTION
90	194208	Pin Cotter 5/16 Bow Tie Lock
91	197984	Link Lift Susp Mower Rear
97	17000612	Screw 3/8-16 x .75
98	420525	Link Lift Susp. Front Mower

NOTE: All component dimensions given in U.S. inches
 1 inch = 25.4 mm

TRACTOR - - MODEL NUMBER 917.203900

DECALS



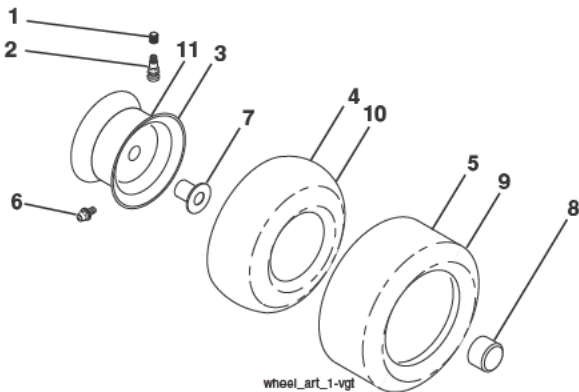
KEY PART NO. NO.

KEY PART NO.	NO.	DESCRIPTION
1	581894601	Decal, Steering
2	585767601	Decal, Hood LH/RH
3	441121	Decal, Fender
4	581579501	Decal, Mower Warning
5	586111501	Decal, Engine HP
6	581578801	Decal, Mower Caution
7	586207301	Decal, Sideskirt RH
8	421534	Decal, V-Belt Schematic Drive
9	434996	Decal, Battery Dnge/Poi
10	434995	Decal, Battery

KEY PART NO. NO.

KEY PART NO.	NO.	DESCRIPTION
11	586106801	Decal, Replacement
12	585571401	Decal, Customer Maint.
13	581580001	Decal, Mower V-Belt SCH.
14	586207302	Decal, Sideskirt LH
--	581724801	Decal, Bypass
--	193226X428	Pad, Footrest LH
--	400981X428	Pad, Footrest RH
--	586168696	Manual, Operator's (Eng/Span)
--	586168627	Manual, Parts

WHEELS & TIRES



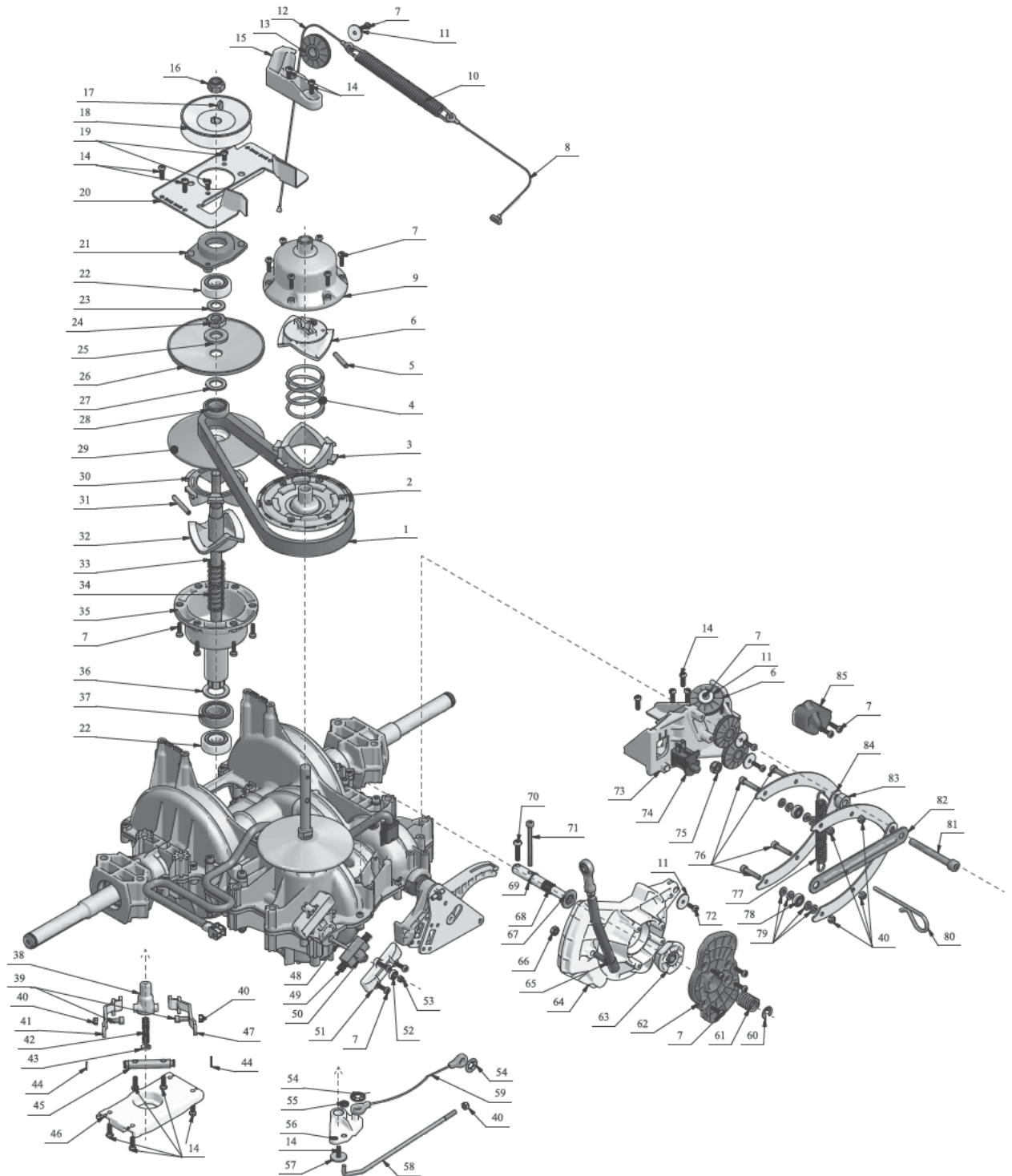
KEY PART NO. NO.

KEY PART NO.	NO.	DESCRIPTION
1	59192	Cap, Valve, Tire
2	65139	Stem, Valve
3	106732X613	Rim Assembly, Front
4	59904	Tube, Front
5	106222X	Tire, Front 15 x 6-6
6	278H	Fitting, Grease
7	9040H	Bearing, Flange
8	104757X428	Cap, Axle
9	138468	Tire, Rear 20 X 8-8
10	7152J	Tube, Rear
11	106108X613	Rim Assembly, Rear
--	144334	Sealant, Tire (10 oz. Tube)

NOTE: All component dimensions given in U.S. inches
1 inch = 25.4 mm

TRACTOR - - MODEL NUMBER 917.203900

GENTRANS VATR TRANSAXLE



TRACTOR - - MODEL NUMBER 917.203900

GENTRANS VATR TRANSAXLE

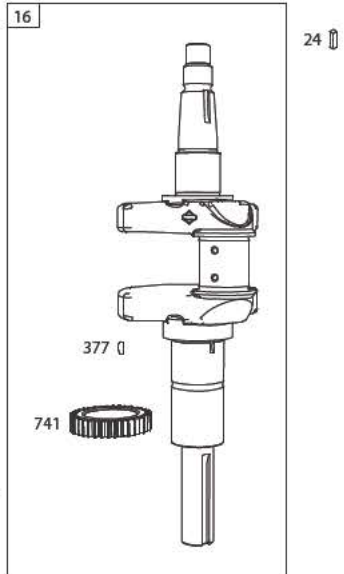
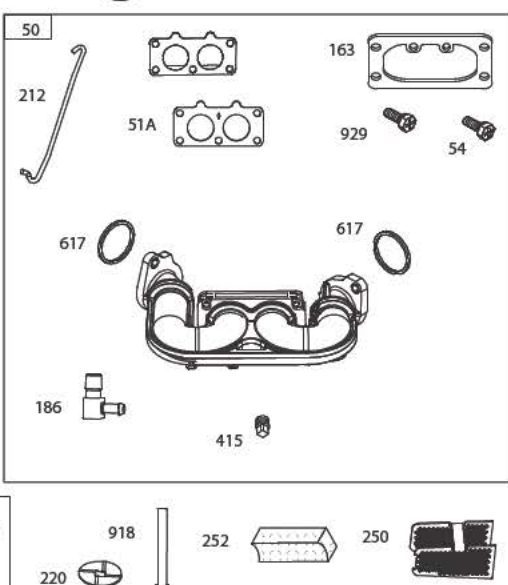
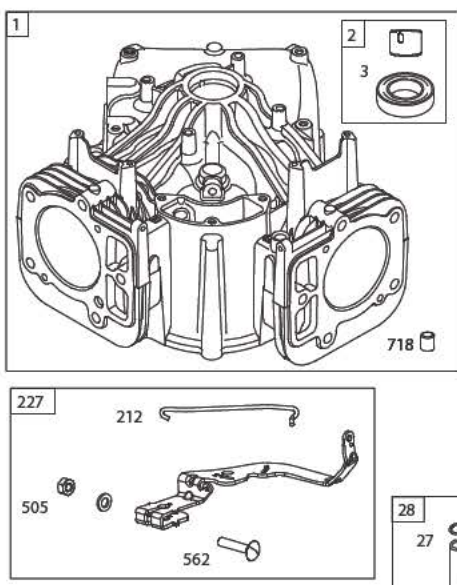
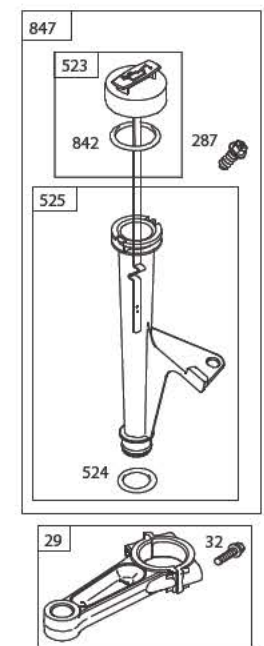
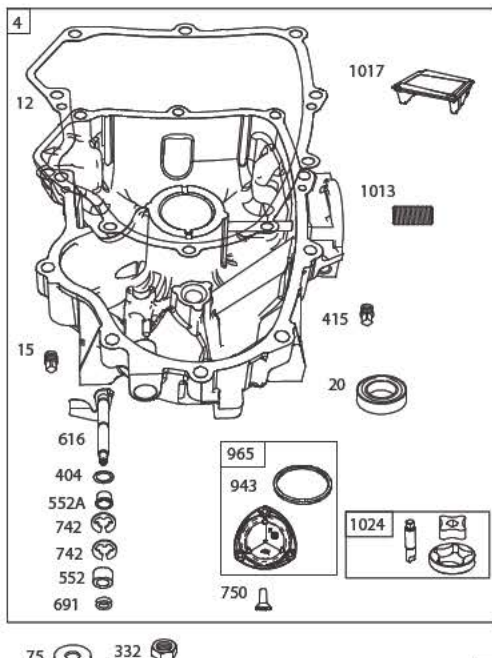
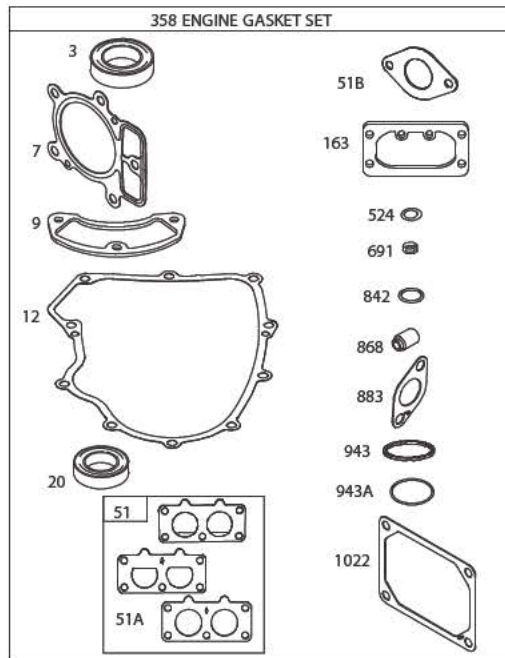
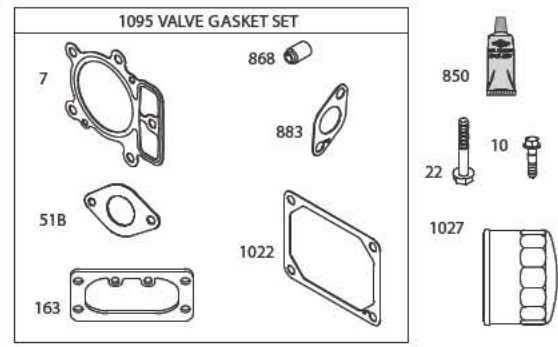
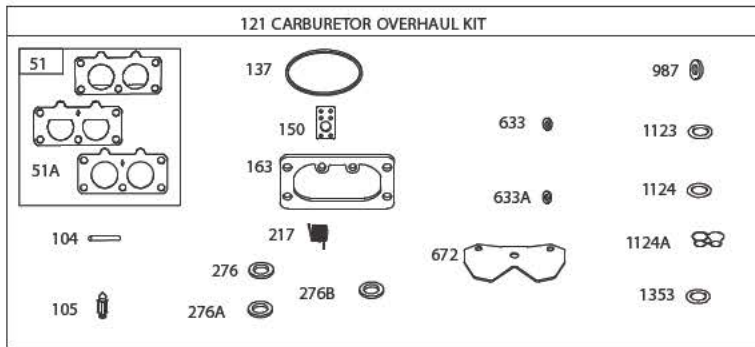
KEY NO.	PART NO.	DESCRIPTION	KEY NO.	PART NO.	DESCRIPTION
1	426740	Belt	45	426789	Axle
2	426739	Flange	46	426788	Inferior plate
3	426738	Ramp	47	426787	Lever
4	426737	Spring	48	426786	Screw M4 (0.7Nm)
5	426736	Pin	49	426785	Spring
6	426735	Fixed ramp	50	426784	Inversion axle
7	426734	Screw 4x16 (torque 2.2Nm)	51	426783	Cover
8	426733	Cable	52	426782	Ball bearing 604.2RS
9	426732	Cap	53	426781	Nut M4
10	426731	Spring	54	426780	Starlock Ø8
11	426730	Washer	55	426779	Starlock Ø4
12	426729	Cable	56	426778	Lever
13	426728	Cable sheave	57	426777	Washer 5x20x1
14	426727	Screw 5x16 (torque 2.2Nm)	58	426776	Rod
15	426726	Support 1 sheave	59	426775	Cable
16	426725	Nut M12	60	426774	Clip
17	426724	Key 4x6.5	61	426773	Spring
18	426723	Pulley	62	426772	Cam
19	426722	Screw 5x10 (torque 2.2Nm)	63	426771	Cone
20	426721	Superior plate	64	426770	Cam
21	426720	Bushing	65	426769	Rod
22	426710	Ball bearing 6301.2RS	66	426768	Nut 1/4" (5Nm)
23	426709	Washer 13x22x1.5	67	426767	Washer 13x24x2,5
24	426708	Scerw M14x1.5	68	426766	Axle
25	426707	Washer 15.1x29.5x3	69	426765	Clip 12x1
26	426706	Flange Ø15.1	70	426763	Screw 5x25 (Torque 3.3Nm)
27	426704	Washer 15.7x25.3x2	71	426764	Screw M5x60 (Torque 3.3Nm)
28	426703	Ball bearing 6002.2RS	72	426762	Screw 4x10 (Torque 2.2Nm)
29	426702	Flange Ø17.7	73	426761	Support
30	426701	Mobile ramp 40°	74	426758	Switch
31	426700	Pin 5x40	75	426756	Nut M8
32	426699	Fixed ramp 40°	76	426755	Screw M5x25 (Torque 2.2Nm)
33	426698	Variator shaft	77	426754	Spring
34	426697	Variator Spring	78	426753	Ball bearing 625 2RS
35	426696	Cap	79	426752	Washer 5.3x10x1.7
36	426693	Washer 21x33x1.5	80	426751	Pin Ø4
37	426692	Ball bearing 6004 2RS	81	426750	Screw M8x70 (1.1m)
38	426691	Cable hook	82	426749	Plate
39	426690	Screw M5x12	83	426748	Spacer
40	426689	Nut M5	84	426747	Jaws
41	426687	Lever	85	426746	Snap-in
42	426686	Spring			
43	426791	Washer 3x11.7x2			
44	426790	Clips 8x0.8			

NOTE: All component dimensions given in U.S. inches
1 inch = 25.4 mm

TRACTOR - - MODEL NUMBER 917.203900

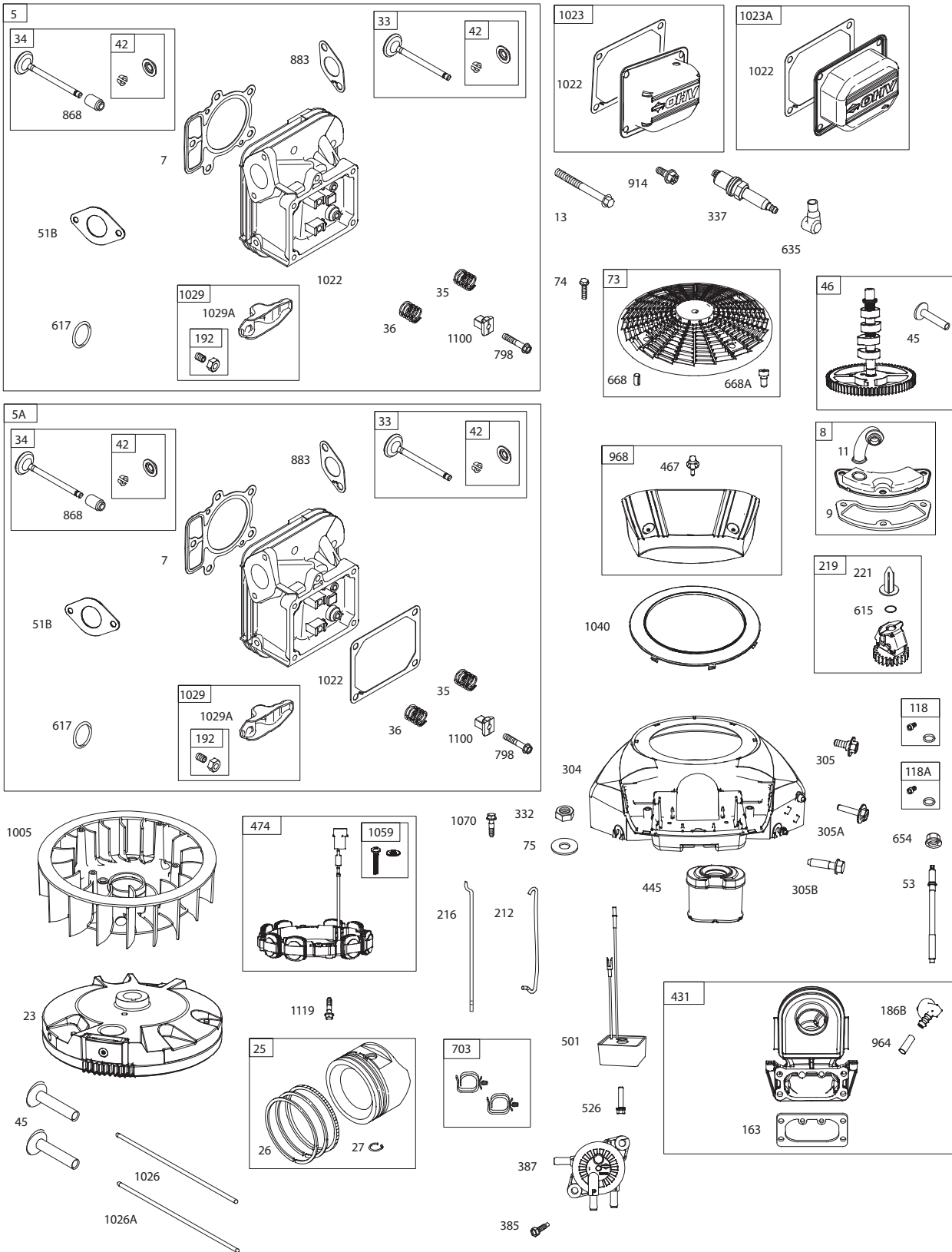
BRIGGS & STRATTON ENGINE-MODEL NUMBER 44R677, TYPE NUMBER 0021-G1

- | | | | | |
|----------------|----------------------|------------------------|-------------------------|--------------------|
| 48 SHORT BLOCK | 1036 EMISSIONS LABEL | 1058 OPERATOR'S MANUAL | 1329 REPLACEMENT ENGINE | 1330 REPAIR MANUAL |
|----------------|----------------------|------------------------|-------------------------|--------------------|



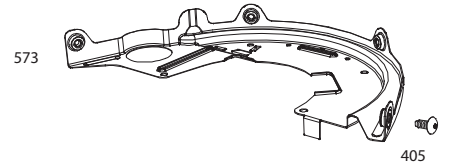
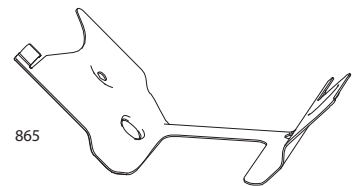
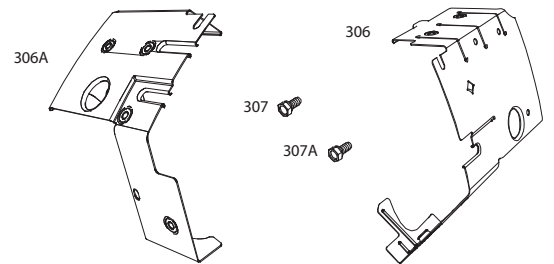
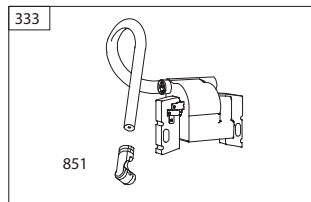
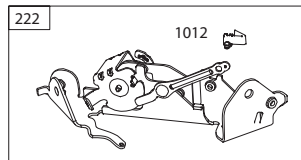
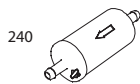
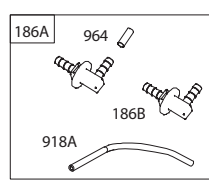
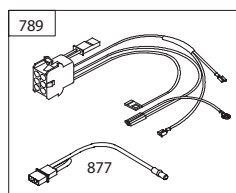
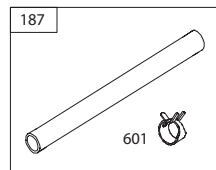
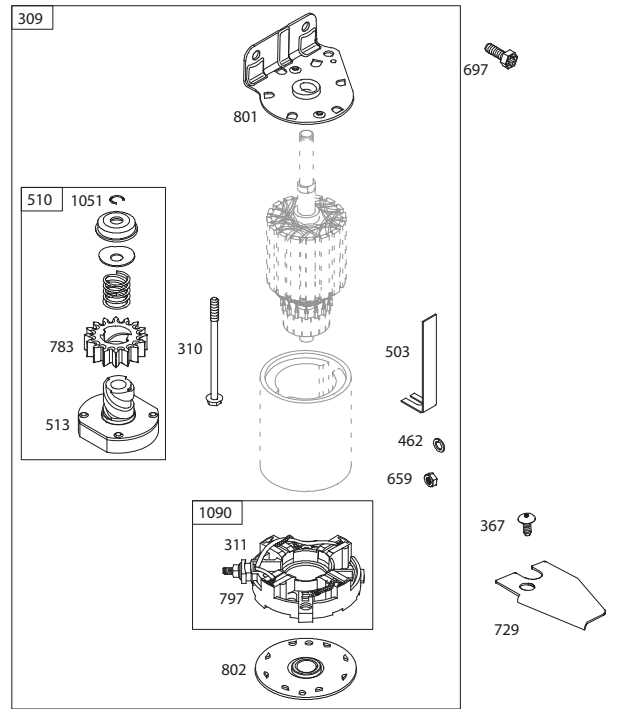
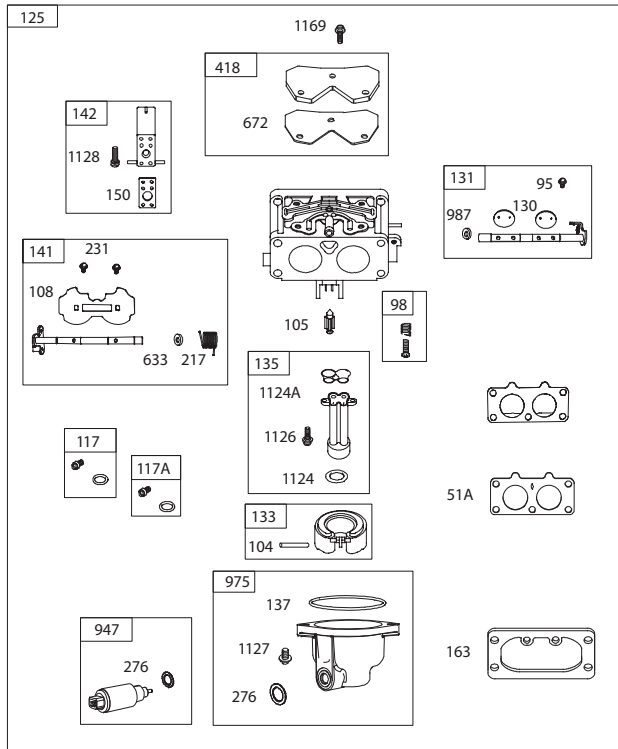
TRACTOR - - MODEL NUMBER 917.203900

BRIGGS & STRATTON ENGINE-MODEL NUMBER 44R677, TYPE NUMBER 0021-G1



TRACTOR - - MODEL NUMBER 917.203900

BRIGGS & STRATTON ENGINE-MODEL NUMBER 44R677, TYPE NUMBER 0021-G1



TRACTOR - - MODEL NUMBER 917.203900

BRIGGS & STRATTON ENGINE-MODEL NUMBER 44R677, TYPE NUMBER 0021-G1

KEY NO.	PART NO.	DESCRIPTION	KEY NO.	PART NO.	DESCRIPTION
1	591695	Cylinder Assembly	142	699726	Nozzle-Carburetor
2	797673	Bushing/Seal Kit (Magneto Side)	150	841649	Gasket-Nozzle
3	391086s	Seal-Oil (Magneto Side)	163	691001	Gasket-Air Cleaner
4	796307	Sump-Engine	186	795985	Connector-Hose (Intake Manifold)
	796231	Head-Cylinder (Cylinder #1)	186A	799158	Connector-Hose (EVAP)
5A	796232	Head-Cylinder (Cylinder #2)	186B	845141	Connector-Hose (EVAP)
7	693997	Gasket-Cylinder Head	187	791766	Line-Fuel (Cut to Required Length)
8	792185	Breather Assembly			
9	690937	Gasket-Breather	188	691108	Screw (Control Bracket)
10	691108	Screw (Breather Assembly)	192	690083	Adjuster-Rocker Arm
11	792184	Tube-Breather	209	798921	Spring-Governor (Orange)
12	591911	Gasket-Crankcase	211	691019	Spring-Governed Idle (No Color)
13	793988	Screw (Cylinder Head)	212	695238	Link-Throttle
15	690946	Plug-Oil Drain	216	796229	Link-Choke
16	796237	Crankshaft	217	799771	Spring-Choke Return
20	795387	Seal-Oil (PTO Side)	219	793338	Gear-Governor
22	694966	Screw (Crankcase Cover/Sump)	220	799772	Washer (Governor Gear)
23	691054	Flywheel	221	841026	Cup-Governor
24	222698s	Key-Flywheel (Aluminum)	222	592555	Bracket-Control
25	792023	Piston Assembly (Standard)	227	798856	Lever-Governor Control
	792072	Piston Assembly (020" Oversize)	231	690718	Screw (Choke Valve)
26	792026	Ring Set (Standard)	240	695666	Filter-Fuel
	792073	Ring Set (.020" Oversize)	250	690957	Retainer-Breather
27	690975	Lock-Piston Pin	252	794389	Collector-Oil
28	696581	Pin-Piston	265	691024	Clamp-Casing
29	796209	Rod-Connecting	267	792629	Screw (Casing Clamp)
32	690976	Screw (Connecting Rod)	276	695410	Washer-Sealing (Aluminum)
33	697576	Valve-Exhaust	276A	690997	Washer-Sealing (Fiber)
34	792200	Valve-Intake	276B	794271	Washer-Sealing
35	694865	Spring-Valve (Intake)	287	697820	Screw (Dipstick Tube)
36	694865	Spring-Valve (Exhaust)	304	591668	Housing-Blower
42	499586	Keeper-Valve	305	691005	Screw (Blower Housing)
45	690977	Tappet-Valve			(1/4-20x.66)
46	792555	Camshaft	305A	790690	Screw (Blower Housing) (Blower Housing to Intake Elbow)
48	N/A	Short Block (Not Available At This Printing)	305B	691061	Screw (Blower Housing) (#8-32x.87)
50	591784	Manifold-Intake			
51	795123	Gasket-Intake	306	591666	Shield-Cylinder (Cylinder #2)
51A	690950	Gasket-Intake	306A	796852	Shield-Cylinder (Cylinder #1)
51B	690949	Gasket-Intake	307	691003	Screw (Cylinder Shield)
53	690951	Stud (Carburetor)	307A	691108	Screw (Cylinder Shield) (1/4-20x.66)
54	699816	Screw (Intake Manifold)			
73	494439	Screen-Rotating	309	497595	Motor-Starter
74	698425	Screw (Rotating Screen)	310	690323	Screw (Starter Motor)
75	691056	Washer (Flywheel)	311	497608	Brush Set
95	690718	Screw (Throttle Valve)	332	691059	Nut (Flywheel)
98	699721	Kit-Idle Speed	333	592846	Armature-Magneto
104	694918	Pin-Float Hinge	334	691061	Screw (Magneto Armature)
105	797410	Valve-Float Needle	337	792015	Plug-Spark
108	699723	Valve-Choke	358	694012	Gasket Set-Engine
117	792296	Jet-Main (Standard) (Left Jet)	367	697820	Screw (Wire Clip)
117A	842627	Jet-Main (Standard) (Left Jet)	377	690979	Key-Woodruff
118	699457	Jet-Main (High Altitude) (Left Jet) (5000/9000 Feet)	385	797409	Screw (Fuel Pump)
			387	808656	Pump-Fuel
118A	699733	Jet-Main (High Altitude) (Right Jet) (5000/9000 Feet)	404	690442	Washer (Governor Crank)
			405	697820	Screw (Back Plate)
121	797890	Kit-Carburetor Overhaul	415	794903	Plug
125	796227	Carburetor	418	795912	Plate-Carburetor
130	690993	Valve-Throttle	431	591661	Elbow-Intake
131	499805	Kit-Throttle Shaft	445	593240	Filter-Air Cleaner Cartridge
133	699724	Float-Carburetor	447	691003	Screw (Air Guide Cover) (#10-24x.43)
135	699729	Tube-Fuel Transfer			
137	690994	Gasket-Float Bowl	462	691261	Washer (Starter Cable)
141	796228	Kit-Choke Shaft	467	591660	Knob-Air Cleaner
			474	592831	Alternator

TRACTOR - - MODEL NUMBER 917.203900

BRIGGS & STRATTON ENGINE-MODEL NUMBER 44R677, TYPE NUMBER 0021-G1

KEY NO.	PART NO.	DESCRIPTION	KEY NO.	PART NO.	DESCRIPTION
501	794360	Regulator	943A	690589	Seal-O Ring (Oil Pump Cover)
503	691532	Strap-Starter	947	798779	Solenoid-Fuel
505	691029	Nut (Governor Control Lever)	964	799159	Cap-Connector
510	696541	Drive-Starter	965	796221	Cover-Oil Pump
513	692024	Clutch-Drive	968	795120	Cover-Air Cleaner
523	691036	Dipstick	975	796777	Bowl-Fuel
524	691032	Seal-Dipstick Tube	987	691000	Seal-Throttle Shaft
525	691037	Tube-Dipstick	1005	791236	Fan-Flywheel
526	691129	Screw (Regulator)	1012	592556	Retainer-Link
552	796638	Bushing-Governor Crank	1013	690954	Nipple-Oil Filter
552A	690553	Bushing-Governor Crank	1017	796214	Screen-Oil Pump
562	690311	Screw (Governor Control Lever)	1022	690971	Gasket-Rocker Cover
573	790444	Plate-Back	1023	793146	Cover-Rocker (Cylinder #1)
601	691038	Hose-Clamp (Black)	1023A	499600	Cover-Rocker (Cylinder #2)
615	698290	Retainer-Governor Shaft	1024	796220	Pump-Oil
616	691045	Crank-Governor	1026	690981	Rod-Push (Exhaust) (Steel)
617	697891	Seal-O Ring (Intake Manifold) (Red)	1026A	690982	Rod-Push (Intake) (Aluminum)
			1027	795890	Filter-Oil
633	699813	Seal-Choke/Throttle Shaft (Choke Shaft)	1029	690972	Arm-Rocker
			1029A	807323	Arm-Rocker
633A	690998	Seal-Choke/Throttle Shaft	1036		Label-Emissions (Available from a Briggs & Stratton Authorized Dealer)
635	66538s	Boot-Spark Plug			
654	690958	Nut (Carburetor) (Serrated)			
659	691029	Nut (Starter Strap)	1040	791237	Plate-Trim
668	691500	Spacer (Rotating Screen)	1051	691265	Ring-Retaining
668A	691215	Spacer (Rotating Screen)	1058	381258TRI	Operator's Manual
672	690234	Gasket-Carburetor Plate	1059	698516	Kit-Screw/Washer (Alternator)
691	790574	Seal-Governor Shaft	1070	592604	Screw (Flywheel Fan)
697	591909	Screw (Drive Cap)	1090	691293	Retainer-Brush
703	691010	Clip (Fuel Line)	1095	694013	Gasket Set-Valve
718	690959	Pin-Locating	1100	791959	Pivot-Rocker Arm
729	797454	Zip-Wire	1119	691183	Screw (Alternator)
741	690980	Gear-Timing	1123	690987	Seal-O Ring (Solenoid Retainer)
742	690328	Retainer-E Ring	1124	841653	Seal-O Ring (Fuel Transfer Tube)
750	796208	Screw (Oil Pump Cover)	1124A	690988	Seal-O Ring (Fuel Transfer Tube)
783	695708	Gear-Pinion	1126	690991	Screw (Fuel Transfer Tube)
789	698330	Harness-Wiring	1127	695407	Screw (Float Bowl)
797	693167	Nut (Brush Retainer)	1128	690990	Screw (Carburetor Nozzle)
798	697890	Screw (Rocker Arm)	1193	592577	Screw (Thermostat) (#10-32x.62)
801	691283	Cap-Drive			
802	691286	Cap-End	1329	N/A	Replacement Engine (Not Avail- able At This Printing)
842	691031	Seal-O Ring (Dipstick Tube)			
847	499602	Dipstick/Tube Assembly	1330	N/A	Repair Manual (Not Available At This Printing)
850	100106	Sealant-Liquid			
851	493880s	Terminal-Spark Plug	1353	699725	Seal-O Ring (Fuel Transfer Tube Extension)
865	591667	Cover-Air Guide (Valley)			
868	690968	Seal-Valve			
877	790544	Wire/Connector-Alternator			
883	690970	Gasket-Exhaust			
914	691127	Screw (Rocker Cover)			
918	797408	Hose-Vacuum (Rocker Cover #1)			
918A	799160	Hose-Vacuum (EVAP)			
929	695239	Screw (Choke Control Bracket)			
943	796222	Seal-O Ring (Oil Pump Cover) (Square Cut) (I.D. 2.48)			
					Carburetor Overhaul Kit Key No. 121
					Engine Gasket Set Key No. 358
					Valve Gasket Set Key No. 1095

NOTE: All component dimensions given in U.S. inches 1 inch = 25.4 mm