

Repair Parts Manual

**CRAFTSMAN®**

# LAWN TRACTOR

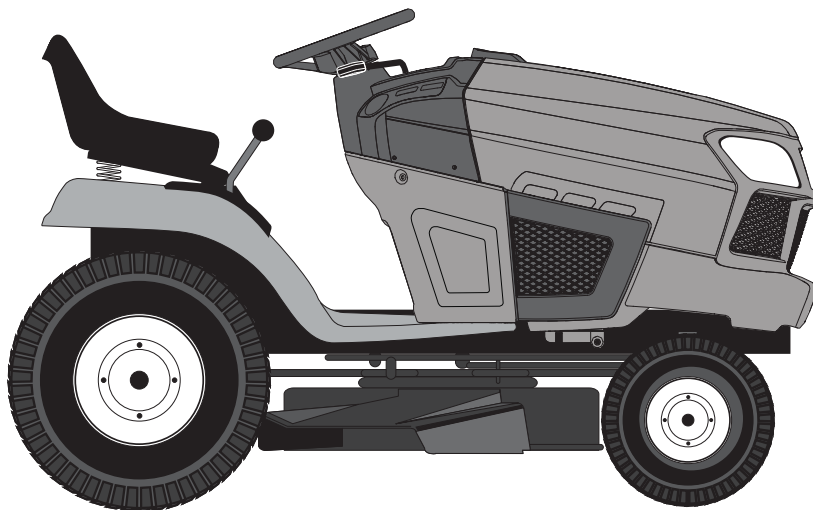
19.0 HP,\* 42" Mower

Electric Start

6-Speed Transaxle

Model No.

**917.203800**



For answers to your questions  
about this product, call:

**1-888-331-4569**

**Craftsman Customer Help Line**

Sears Brands Management Corporation, Hoffman Estates, IL 60179 U.S.A.

Visit our Craftsman website: [www.craftsman.com](http://www.craftsman.com)

**586066026 Rev. 2**

\* The power rating as declared by the engine manufacturer is the average gross power output at the specified RPM of a typical production engine for the engine model measured using SAE Standards for engine gross power. Please refer to the engine manufacturer for details.

**⚠️ WARNING:** This tractor is equipped with an internal combustion engine and should not be used on or near any unimproved forest-covered, brush-covered or grass-covered land unless the engine's exhaust system is equipped with a spark arrester meeting applicable local or state laws (if any). If a spark arrester is used, it should be maintained in effective working order by the operator.

In the state of California the above is required by law (Section 4442 of the California Public Resources Code). Other states may have similar laws. Federal laws apply on federal lands. A spark arrester for the muffler is available through your nearest Sears service center (See ENGINE ASSEMBLY section of this manual).

## REPAIR PROTECTION AGREEMENTS

Congratulations on making a smart purchase. Your new Craftsman® product is designed and manufactured for years of dependable operation. But like all products, it may require repair from time to time. That's when having a Repair Protection Agreement can save you money and aggravation.

*Purchase a Repair Protection Agreement now and protect yourself from unexpected hassle and expense.*

Here's what's included in the Agreement:

- **Expert service** by our 12,000 professional repair specialists.
- **Unlimited service and no charge** for parts and labor on all covered repairs.
- **Product replacement** if your covered product can't be fixed.
- **Discount of 25%** from regular price of service and service-related parts not covered by the agreement; also, 25% off regular price of preventive maintenance check.
- **Fast help by phone** – phone support from a Sears representative on products requiring in-home repair, plus convenient repair scheduling.

Once you purchase the Agreement, a simple phone call is all that it takes for you to schedule service. You can call anytime day or night, or schedule a service appointment online.

Sears has over 12,000 professional repair specialists, who have access to over 4.5 million quality parts and accessories. That's the kind of professionalism you can count on to help prolong the life of your new purchase for years to come. Purchase your Repair Protection Agreement today!

**Some limitations and exclusions apply.**

**For prices and additional information call 1-800-827-6655.**

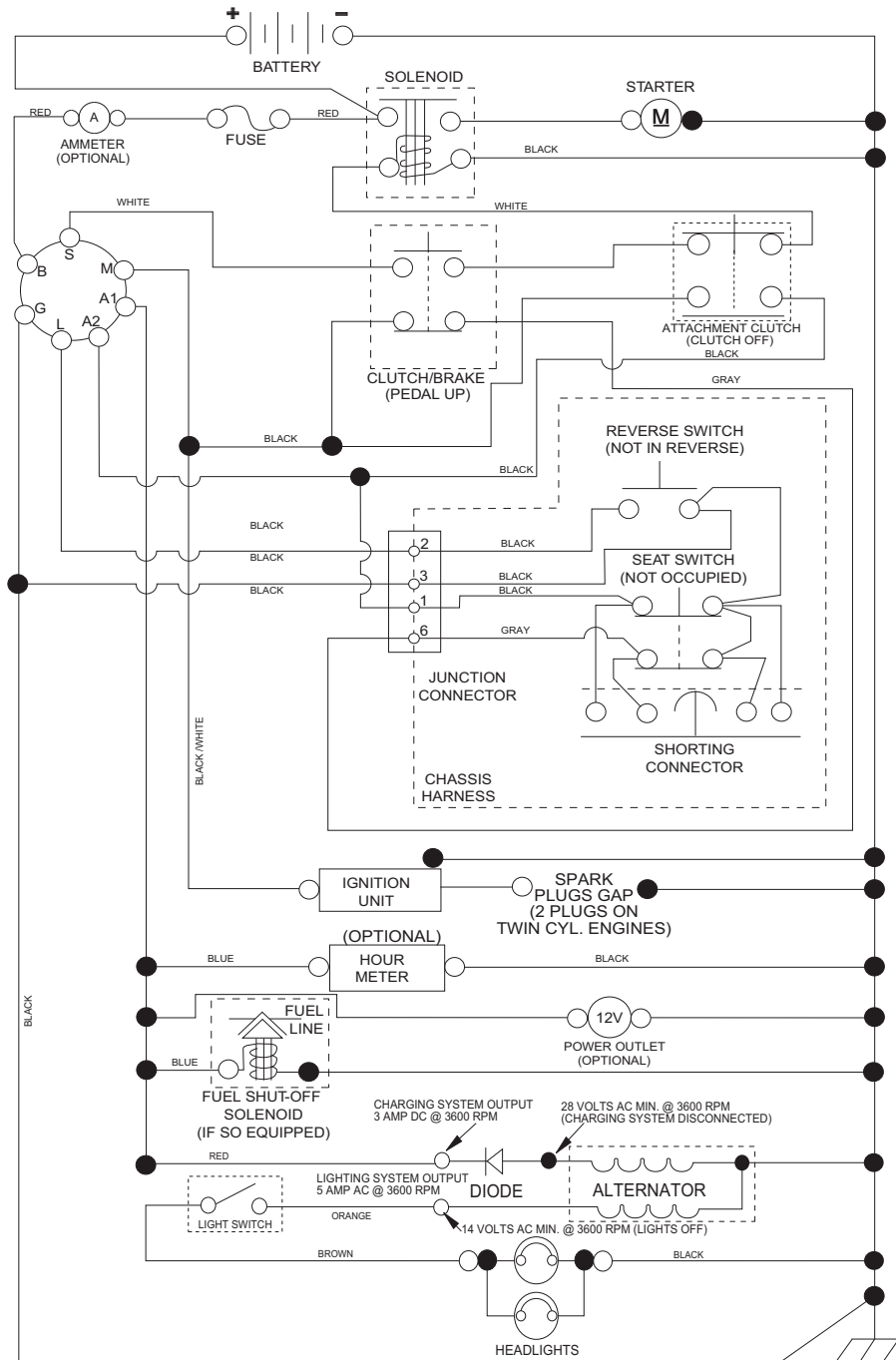
## SEARS INSTALLATION SERVICE

*For Sears professional installation of home appliances, garage door openers, water heaters, and other major home items, in the U.S.A. call 1-800-4-MY-HOME®.*

# TRACTOR - - MODEL NUMBER 917.203800

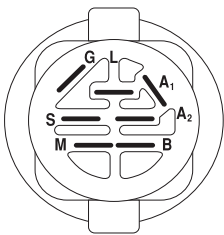
## SCHEMATIC

SCH11



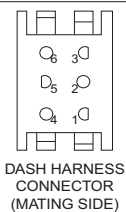
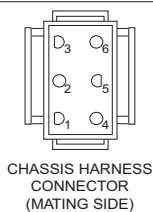
### NOTE

YOUR TRACTOR IS EQUIPPED WITH A SPECIAL ALTERNATOR SYSTEM. THE LIGHTS ARE NOT CONNECTED TO THE BATTERY, BUT HAVE THEIR OWN ELECTRICAL SOURCE. BECAUSE OF THIS, THE BRIGHTNESS OF THE LIGHTS WILL CHANGE WITH ENGINE SPEED. AT IDLE THE LIGHTS WILL DIM. AS THE ENGINE IS SPEEDED UP, THE LIGHTS WILL BECOME THEIR BRIGHTEST.



### IGNITION SWITCH

POSITION	CIRCUIT	"MAKE"
OFF	M+G+A1	
RUN/OVERRIDE	B+A1	
RUN	B+A1	L+A2
START	B + S + A1	

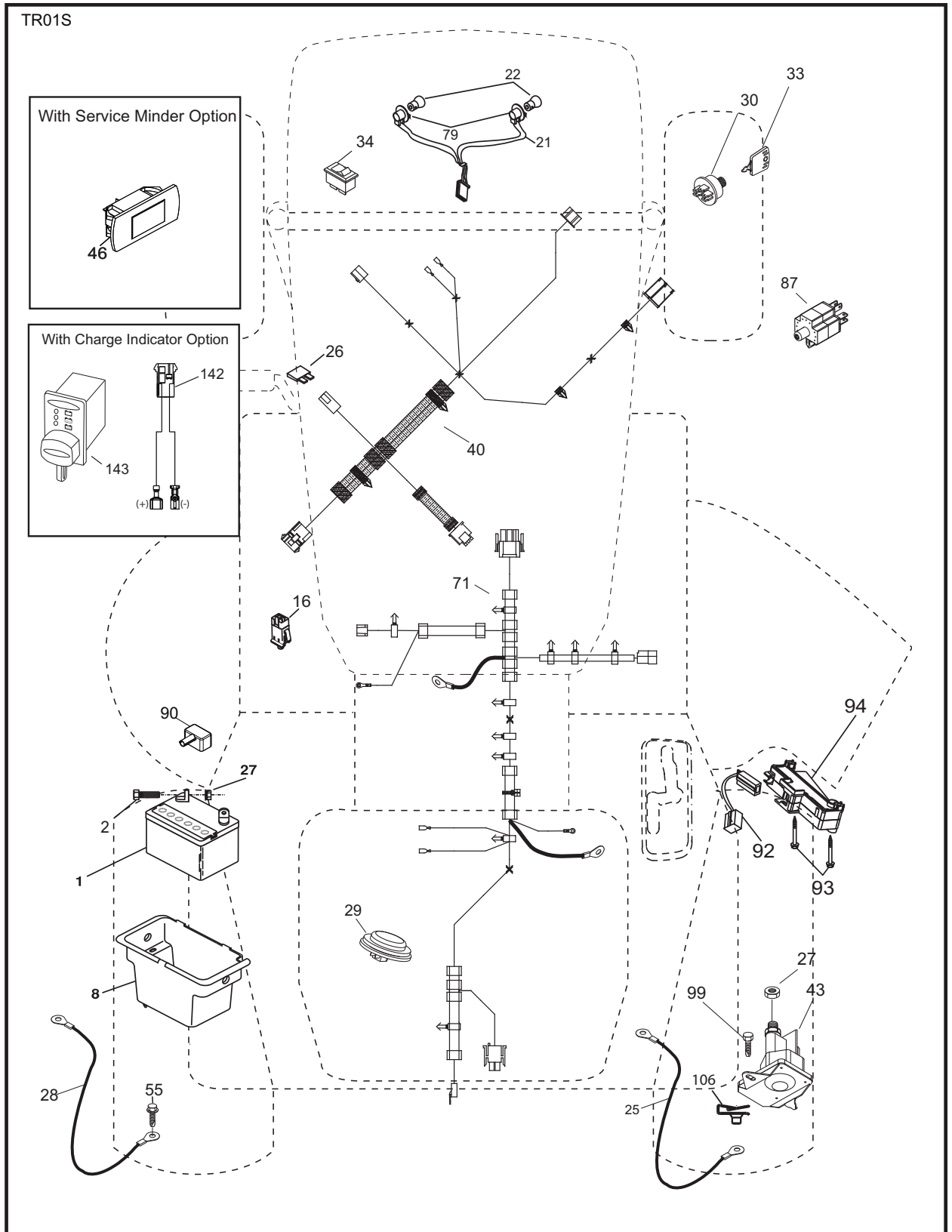


WIRING INSULATED CLIPS  
NOTE: IF WIRING INSULATED CLIPS WERE REMOVED FOR SERVICING OF UNIT, THEY SHOULD BE RE-INSTALLED TO PROPERLY SECURE YOUR WIRING.

NON-REMOVABLE CONNECTIONS  
REMOVABLE CONNECTIONS

# TRACTOR - - MODEL NUMBER 917.203800

## ELECTRICAL



# ELECTRICAL

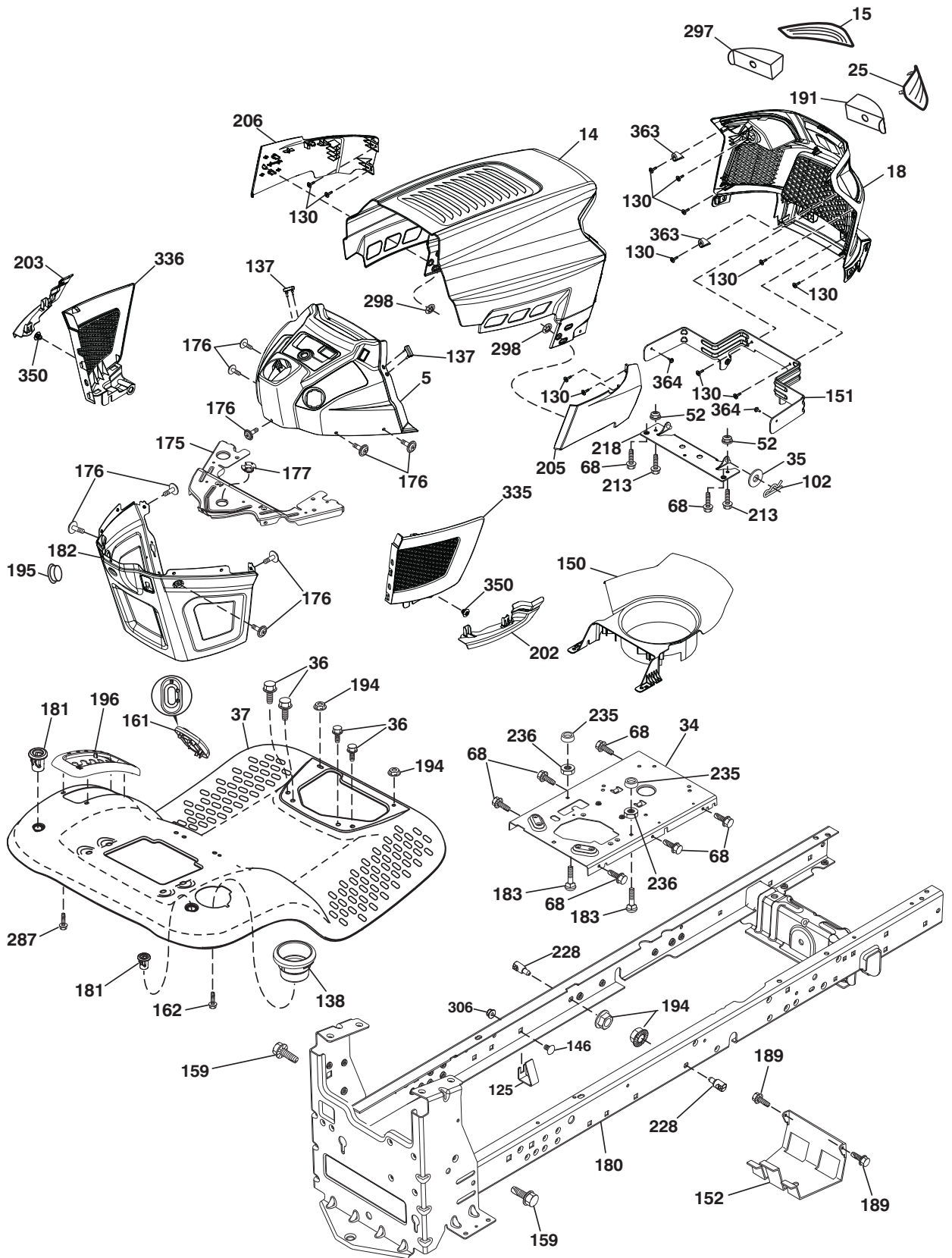
## TRACTOR - - MODEL NUMBER 917.203800

KEY NO.	PART NO.	DESCRIPTION
1	163465	Battery
2	74760412	Bolt Hex Hd 1/4-20 unc x 3/4
8	193228	Box Battery
16	176138	Switch Interlock Push-In
21	400252	Harness Socket Light w/4152J
22	4152J	Bulb Light
25	581498001	Cable Starter
26	175158	Fuse
27	73510400	Nut Keps Hex 1/4-20 unc
28	421686	Cable, Ground
29	401545	Switch, Seat
30	193350	Switch, Ign
33	411932	Key/Chain
34	110712X	Switch Light / Reset
40	581023101	Harness Ign. Dash
43	192507	Solenoid
55	17060512	Screw Thdrol 5/16-18 x 3/4 TYTT
71	581023001	Harness Ign. Chassis
79	175242	Bulbholder Asm. Incan Descent
87	197802	Switch Interlock Clutch Cable
90	435395	Cover Terminal Battery
92	196615	Harness Pigtail Reverse Switch
93	192540	Screw Plastite 10 - 14 x 2 00
94	191834	Module Reverse ROS
99	17670412	Screw
106	174814	Palnut

**NOTE:** All component dimensions given in U.S. inches  
1 inch = 25.4 mm

# TRACTOR - - MODEL NUMBER 917.203800

## CHASSIS ASSEMBLY



chassis-tex\_TALON I\_8

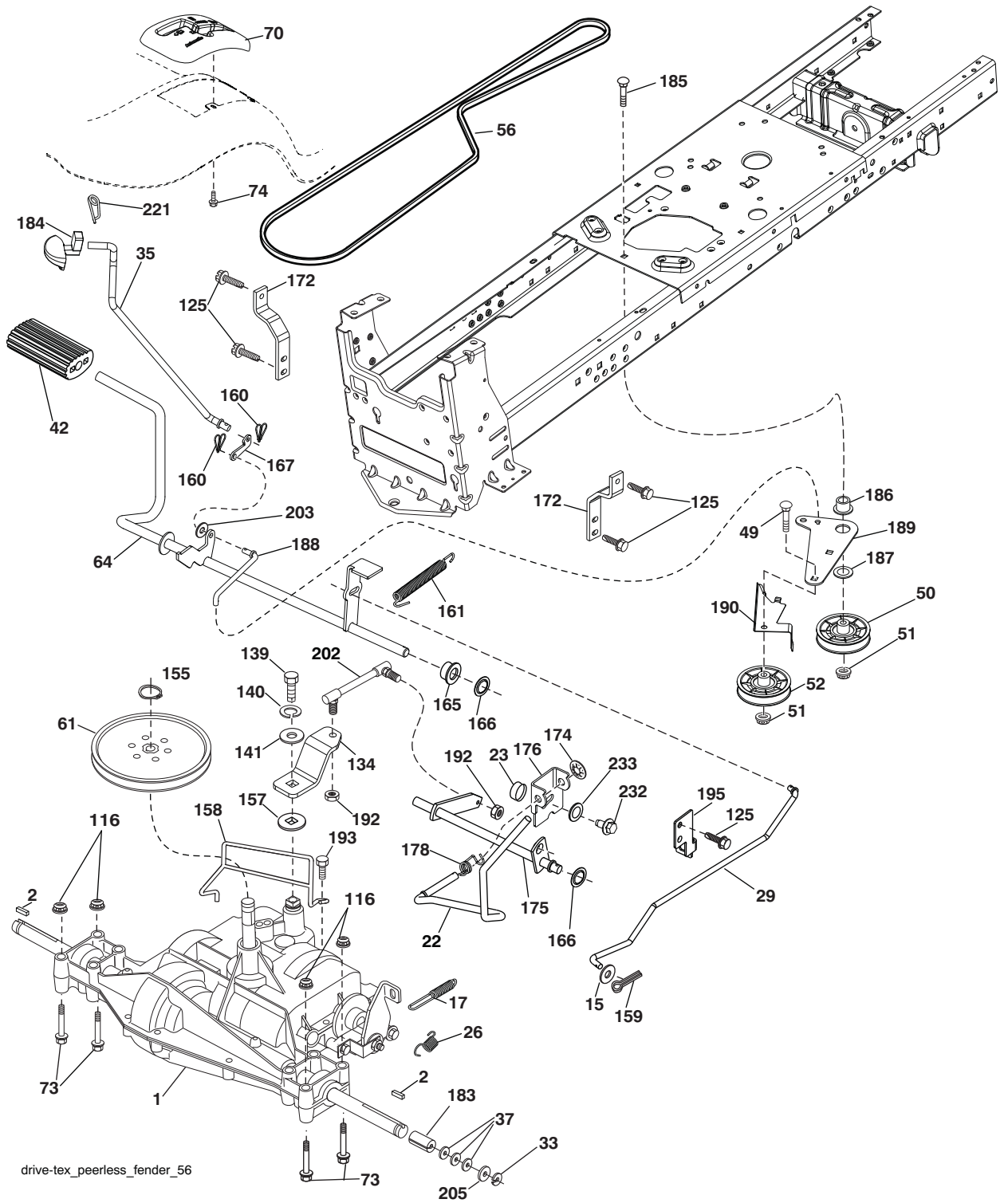
**TRACTOR - - MODEL NUMBER 917.203800**  
**CHASSIS ASSEMBLY**

<b>KEY PART NO.</b>	<b>NO.</b>	<b>DESCRIPTION</b>
5	580485803	Dash
14	580354403	Hood
15	580485601	Lens LH
18	580485302	Grille
25	580484501	Lens RH
34	580910801	Plate engine
35	19111116	Washer 11/32 x 11/16 x 16 Ga.
36	17060512	Screw 5/16-18 x 3/4
37	414872X615	Fender
52	73680500	Nut Crown lock 5/16-18
68	17490508	Screw Thdrol 5/16-18 x 1/2
102	4497H	Retainer Spring 1"
125	581684801	Clip Fuel Line
130	416358	Screw # 10 x .750 BOS Thread
137	407590	Bumper Dash
138	193224X428	Cupholder
146	581857901	Bolt
150	580485503	Duct Heat Hood
151	580663302	Bracket Pivot
152	199535	Shield Browning/Debris
159	17000612	Screw Hexwsh Thdrol 3/8-16 x 3/4
162	142432	Screw Hex Wsh Hi-Lo 1/4 x 1/2
175	196304	Crossmember
176	400776	Screw 10-24 x 5/8 Wshd Qdrx
177	195227	Bushing Steering
180	195457	Chassis
181	193102X428	Bushing Mtg. Fender Crgo.
182	406859	Dash Lower
183	74520520	Bolt 5/16-18 x 1-1/4
189	17000512	Screw 5/16-18 x 3/4
191	580485101	Mylar Headlight/Reflective LensRH
194	73900500	Nut Lock Hex Flange 5/16-18
195	401556X428	Plug Hole Dash 12V Adapter
196	414579	Console Asm. Deck Lift
202	580485001	C-Closeout Lwr Trm RH
203	580484801	C-Closeout Lwr Trm LH
205	580843706	Assembly Corner RH
206	580843806	Assembly Corner LH
213	74760512	Bolt hex HD 5/16-18 unc x 3/4
218	580897301	Pivot Hood Assy
228	195161	Stud Fastener
235	406129	Spacer Fender
236	73930500	Nut Center Lock 5/16-18
287	17600406	Screw Hex Washhead 1/4-20 x 3/8
289	199783X428	Plug Cruise/Phone Common YTGT
297	580484901	Mylar Headlight/Reflective Lens LH
298	580851001	Nut Push
306	73900600	Nut Lock
335	580484602	C-Side Closeout RH
336	580484402	C-Side Closeout LH
350	445143	Clip X-Mass Tree
363	580724501	Cap Talon Grille
364	17060408	Screw
- - -	404951X428	Plug Dash SRVMNDR

**NOTE:** All component dimensions given in U.S. inches  
1 inch = 25.4 mm

# TRACTOR - - MODEL NUMBER 917.203800

## GROUND DRIVE





## TRACTOR - - MODEL NUMBER 917.203800

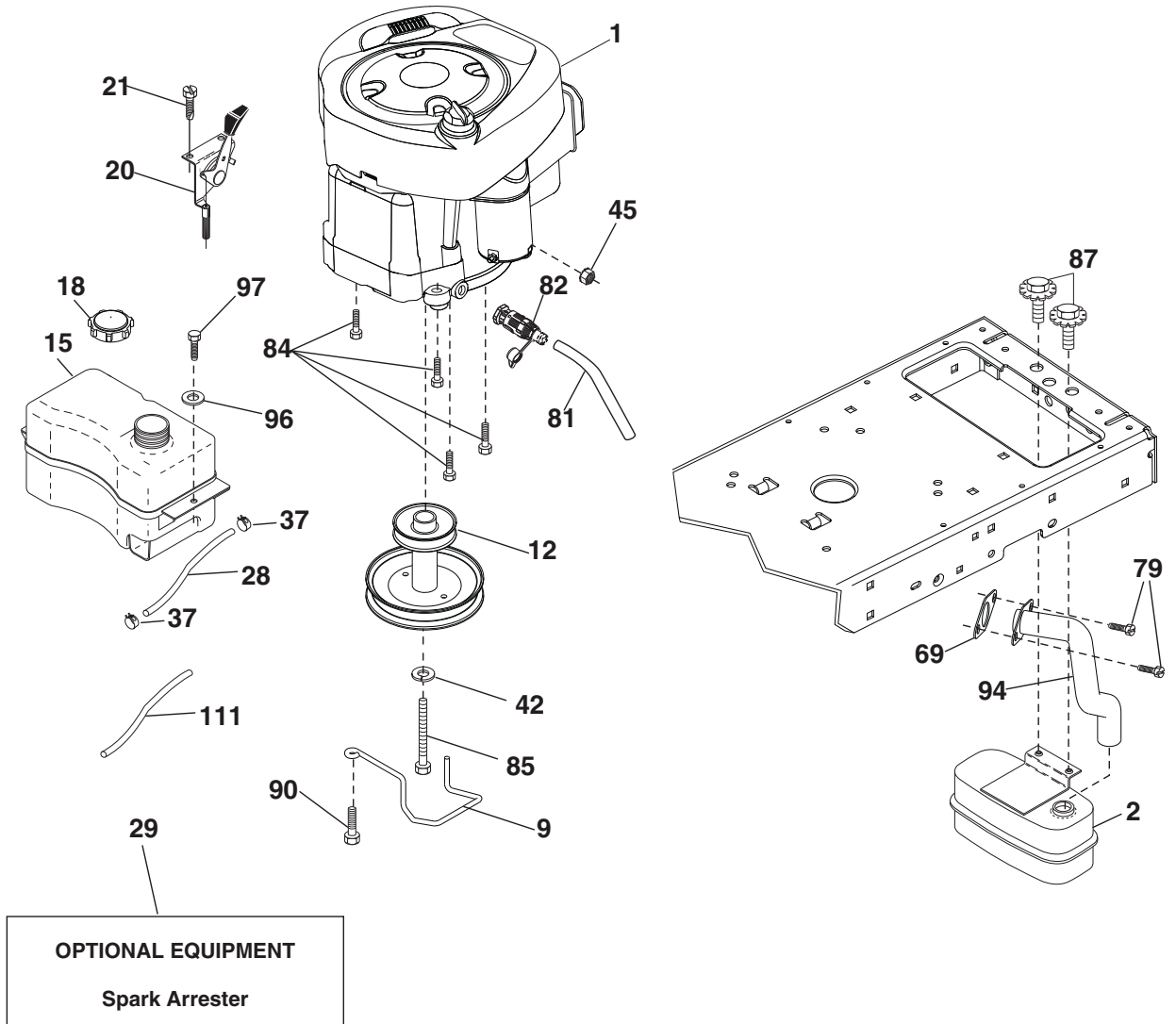
### GROUND DRIVE

KEY PART NO. NO.	DESCRIPTION	KEY PART NO. NO.	DESCRIPTION
1	----- Transaxle, Peerless 206-565 (197941) (See transaxle breakdown.)	158	194352 Keeper T/A
2	123583X Key Square	159	76020412 Pin Cotter 1/8 x 3/4
15	19131316 Washer 13/32 x 13/16 x 16 Ga.	160	169484 Retainer Clip
17	197297 Spring, Brake	161	105709X Spring, Return, Clutch
22	197660 Rod Shift	165	196212 Busing Shaft Brake Hand Control
23	106933X Knob	166	429164 Nut Push .625
26	197455 Spring Brake RTN	167	405257 Latch Brake Parking
29	197267 Rod, Brake	172	197657 Strap Torque LH
33	12000001 Ring E	174	197289 Nut Push
35	583864501 Rod, Brake, Park	175	196224 Shaft Asm Shift
37	121749X Washer 25/32 x 1-1/4 x 16 Ga.	176	196214 Arm Clevis Rod Shift
42	8883R Cover, Foot Pedal	178	197456 Spring Shift
49	72110614 Bolt	183	137057 Spacer, Axle
50	194327 Pulley Idler Flat	184	196439X667 Handle Parking Brake
51	73900600 Lock Nut 3/8-16	185	72110622 Bolt
52	194326 Idler V-Groove	186	194321 Spacer Retainer
56	194346 V-Belt, Drive	187	19133210 Washer
61	123666X Pulley Transaxle	188	194323 Link Clutch Ground Drive
64	196200 Shaft Asm. Pedal Brake Control	189	194317 Bellcrank Ground Drive
70	193225X428 Console Shift	190	194318 Keeper Bellcrank Ground Drive
73	74490540 Bolt 5/16-18 Gr. 5	192	150360 Nut Lock Center 1/4-28
74	142432 Screw 1/4 x 1/2	193	17060512 Screw 5/16-18 x 3/4
116	73900500 Nut Lock Hex Flange 5/16-18	195	197332 Bracket Brake Rod
125	17000512 Screw 5/16-18 x 3/4	202	166231 Link Shift
134	197658 Arm Shift	203	19111116 Washer 11/32 x 11/16 x 16 Ga.
139	74550412 Bolt 1/4-20 unf Gr. 8 w/Patch	205	121748X Washer 25/32 x 1-5/8 x 16 Ga.
140	10040400 Washer Lock Hvy Helical 1/4	221	403187 Retainer Spring Clip Handle
141	19091210 Washer 9/32 x 3/4 x 10 Ga.	232	74780716 Bolt 7/16-14 x 1 Gr. 5
155	12000028 Ring Retainer	233	405296 Washer Serrated
157	105701X Washer Plate Shf		

**NOTE:** All component dimensions given in U.S. inches  
1 inch = 25.4 mm

# TRACTOR - - MODEL NUMBER 917.203800

## ENGINE



engine-tex\_BS\_87

# TRACTOR - - MODEL NUMBER 917.203800

## ENGINE

KEY PART NO.	PART NO.	DESCRIPTION
1	— — — —	Engine B&S Model No. 33R877-0002-G1 (585366801) (See engine breakdown.)
2	580532301	Muffler
9	194319	Keeper Belt Engine
12	401985	Pulley Engine
15	433007	Tank Fuel
18	581176101	Cap Fuel
20	175438X428	Control Throttle/Choke
21	416358	Screw 10 x .750 BOS Thread
28	401137	Fuel Line
29	137180	Spark Arrester Kit
37	123487X	Clamp Hose
42	10040700	Washer Lock 7/16
45	73510400	Nut Keps Hex 1/4-20 unc
69	165291	Gasket
79	192334	Screw 5/16-18 x .75
81	148456	Tube Drain Oil Easy
82	428287	Valve Oil Drain
84	17060620	Screw 3/8-16 x 1-1/4
85	173937	Bolt Hex 7/16-20 x 4 x Gr. 5-1.5
87	171877	Bolt 5/16-18 x 3/4
90	17000616	Screw 3/8-16 x 1.0
94	581880901	Exhaust Tube
96	19091416	Washer 9/32 x 7/8 x 16 Ga.
97	17670412	Screw 1/4-20 x 3/4
111	414119	Purge Line Carb 3/16

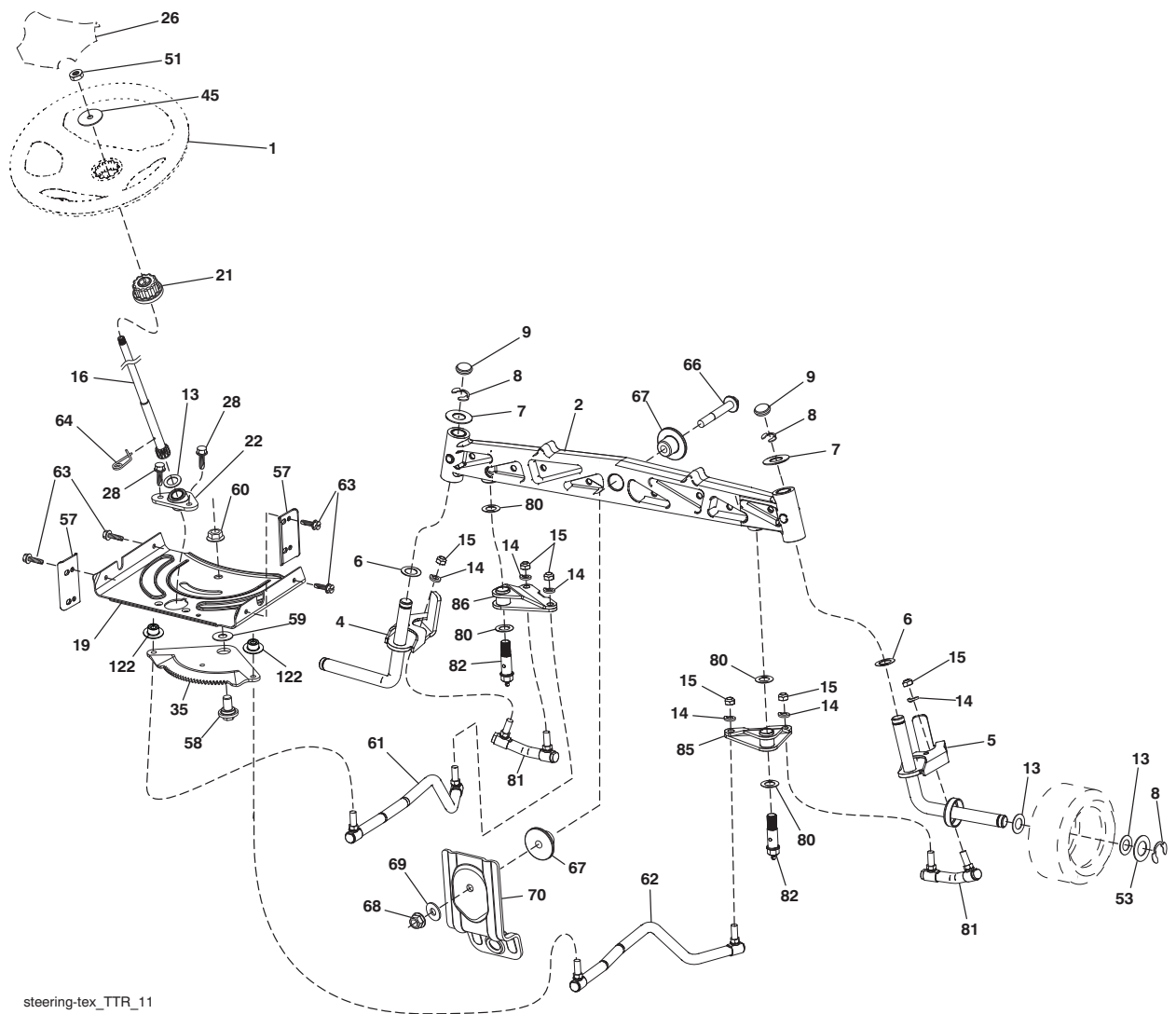
**NOTE:** All component dimensions given in U.S. inches  
1 inch = 25.4 mm

### Engine Power Rating Information

The gross power rating for individual gas engine models is labeled in accordance with SAE (Society of Automotive Engineers) code J1940 (Small Engine Power & Torque Rating Procedure), and rating performance has been obtained and corrected in accordance with SAE J1995 (Revision 2002-05). Torque values are derived at 3060 RPM; horsepower values are derived at 3600 RPM. Actual gross engine power will be lower and is affected by, among other things, ambient operating conditions and engine-to-engine variability. Given both the wide array of products on which engines are placed and the variety of environmental issues applicable to operating the equipment, the gas engine will not develop the rated gross power when used in a given piece of power equipment (actual "on-site" or net power). This difference is due to a variety of factors including, but not limited to, accessories (air cleaner, exhaust, charging, cooling, carburetor, fuel pump, etc.), application limitations, ambient operating conditions (temperature, humidity, altitude), and engine-to-engine variability. Due to manufacturing and capacity limitations, Briggs & Stratton may substitute an engine of higher rated power for this Series engine.

# TRACTOR - - MODEL NUMBER 917.203800

## STEERING ASSEMBLY



steering-tex\_TTR\_11

### KEY PART NO. NO.

### DESCRIPTION

1	414803X428	Wheel, Steering
2	436870	Axle Asm., Front
4	436873	Spindle Asm., LH
5	436874	Spindle Asm., RH
6	6266H	Washer Thrust 0.75 x 1.23
7	121748X	Washer 25/32 x 1-5/8 x 16 Ga.
8	12000029	Ring, Clip #T5304-75
9	184946X667	Cap, Spindle
13	121749X	Washer 25/32 x 1-1/4 x 16 Ga.
14	10040600	Washer Lock 3/8
15	73540600	Nut, Crown Lock 3/8-24 unf
16	440785	Shaft Steering
19	194729	Plate Steering
21	437747	Adapter, Wheel Steering
22	194845	Bushing, Strg. Blk
26	414852X428	Insert, Wheel Steering
28	17000612	Screw 3/8-16 x 3/4
35	440770	Gear, Sector Plate
45	19183812	Washer 9/16 I.D. x 2-3/8 O.D.
51	73940800	Nut Hex Jam Toplock 1/2-20
53	188967	WasherHardened.793x1.637x.060
57	407465	Bracket Upstop
58	194747	Bolt Shoulder Sector Pivot CFM

### KEY PART NO. NO.

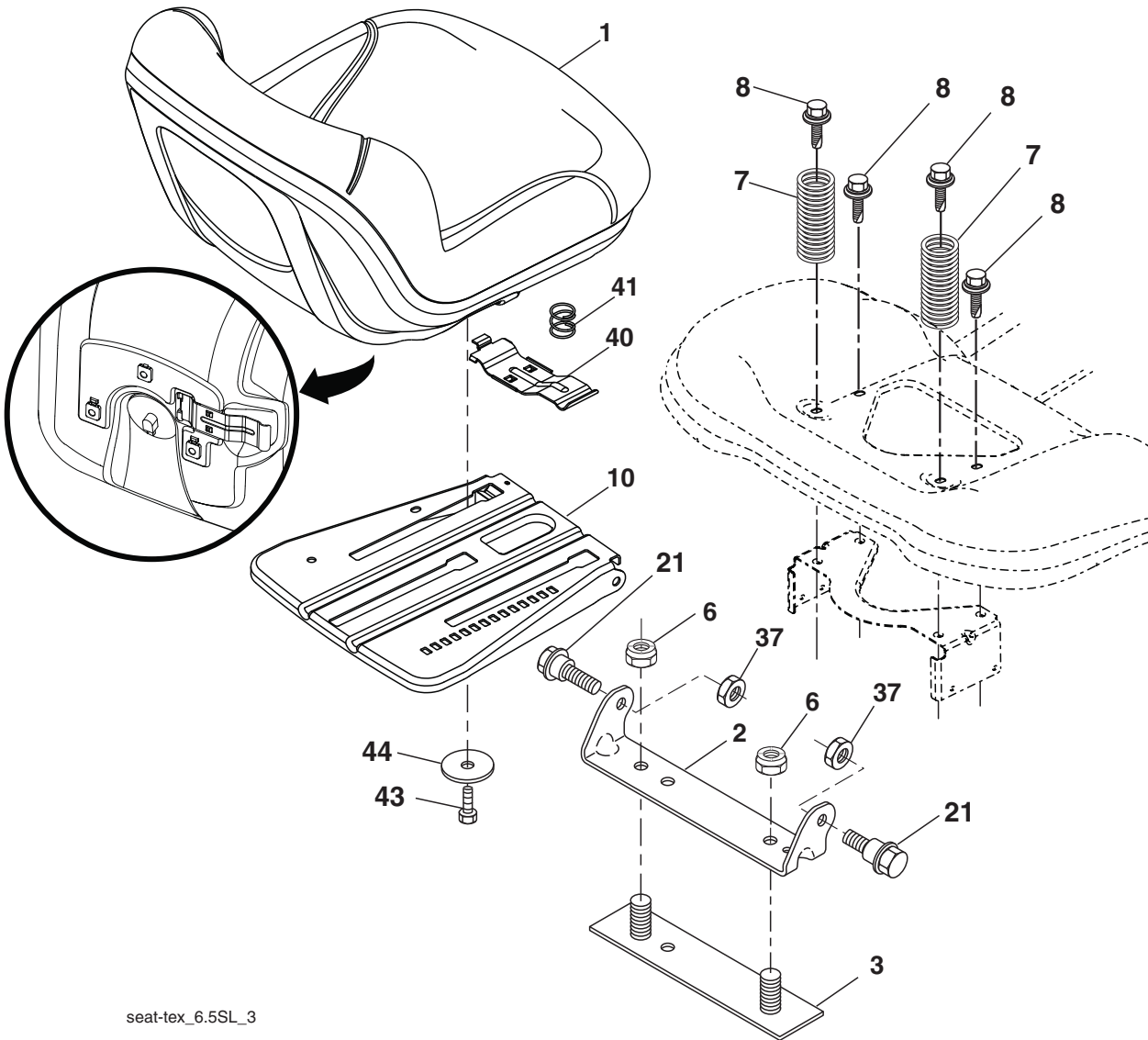
### DESCRIPTION

59	194748	Washer Thrust Sector Steering
60	73971000	Nut Flange Lock 5/8-11
61	436884	Draglink, LH
62	436885	Draglink, RH
63	17000512	Screw 5/16-18 x 3/4
64	199849	Retainer Clip Spring Steering
66	71020748	Bolt Hex Fghd 7/16-14 x 3 Serr
67	194737	Bushing PM Front Axle
68	73900700	Nut Lock Flange 7/16-14 Gr. 5
69	199162	Washer 1.5 x .505 x .118
70	196197	Bracket Deck Susp. Front
80	1370H	Washer Thrust 5/8 x 1.10 x 1/32
81	436887	Link Cross RH
82	442147	Pivot Bolt
85	441873	Pivot RH
86	441872	Pivot LH
122	444962	Cap Gear

**NOTE:** All component dimensions given in U.S. inches  
1 inch = 25.4 mm

# TRACTOR - - MODEL NUMBER 917.203800

## SEAT ASSEMBLY



seat-tex\_6.5SL\_3

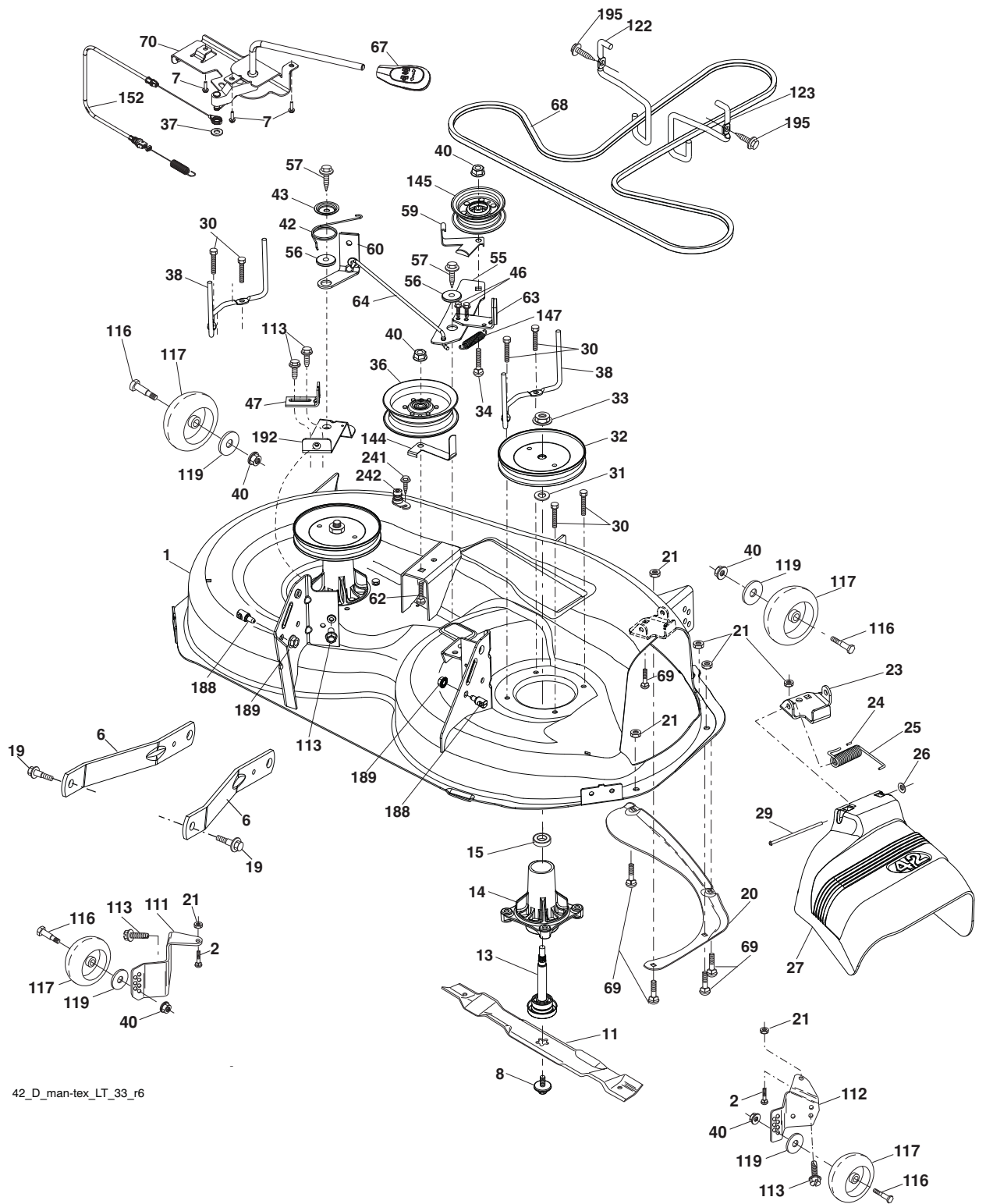
KEY PART NO.	NO.	DESCRIPTION
1	423645	Seat
2	180166	Bracket Pivot Fender
3	140675	Strap, Asm Fender
6	73800600	Nut, Lock W/Ins. 3/8-16 unc
7	124181X	Spring, Seat Cprsn
8	171877	Bolt 5/16-18 unc x 3/4 w/Sems
10	196977	Pan, Seat
21	171852	Bolt, Shoulder 5/16-18
37	73800500	Nut, Lock 5/16-18 unc

KEY PART NO.	NO.	DESCRIPTION
40	197661	Handle Slide Seat
41	198200	Spring Latch Seat
43	74760612	Bolt 3/8-16 x 3/4
44	19133812	Washer 13/32 x 2-3/8 x 12 Ga.

**NOTE:** All component dimensions given in U.S. inches  
1 inch = 25.4 mm

# MOWER DECK

## TRACTOR - - MODEL NUMBER 917.203800



42\_D\_man-tex\_LT\_33\_r6

## TRACTOR - - MODEL NUMBER 917.203800

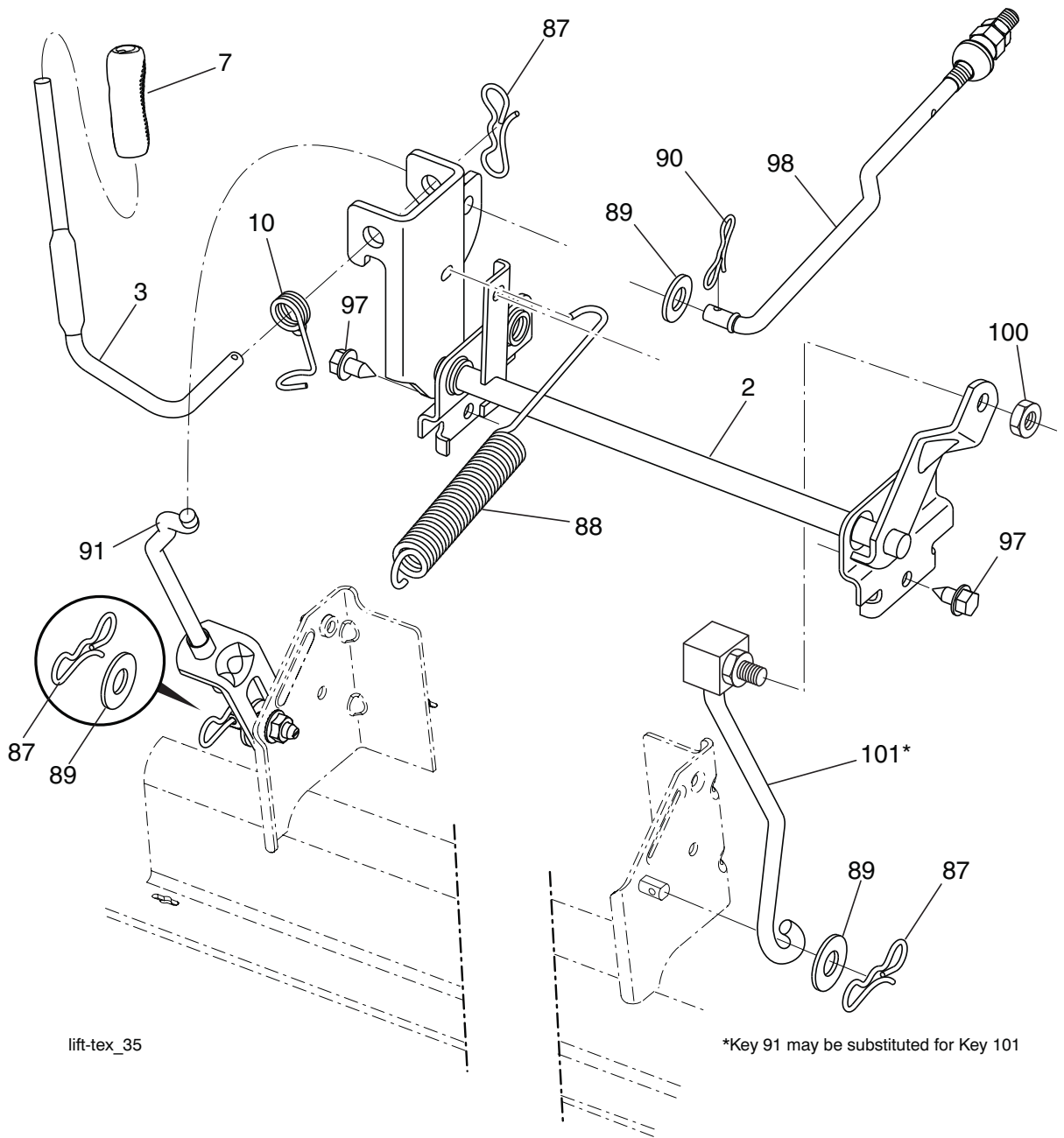
### MOWER DECK

KEY NO.	PART NO.	DESCRIPTION	KEY NO.	PART NO.	DESCRIPTION
1	196495X615	Mower Housing	64	199790	Link Brake
2	72140506	Bolt RDHD SQNK 5/16-18 unc x 3/4	67	198398X667	Handle Clutch Cable
6	195186	Arm Suspension	68	429636	Belt, Drive
7	416358	Screw #10 x 0.750	69	72140505	Bolt
8	193003	Bolt/Washer asm 7/16-20 unf	70	199972	Clutch Asm Manual
11	424752	Blade 42 SP 3N1	111	404784	Bracket Wheel Gauge LH
13	192872	Shaft Assembly, Mandrel	112	404785	Bracket Wheel Gauge RH
14	187281	Housing, Mandrel	113	17000510	Screw 5/16-18
15	110485X	Bearing, Ball, Mandrel	116	4898H	Bolt SHLD. "A" 2.41 "B" 1.66
19	196539	Bolt, Shoulder	117	188606	Wheel Gage
20	159770	Baffle Vortex	119	19121414	Washer 3/8 x 7/8 x 14 Ga.
21	73680500	Nut, Crownlock 5/16-18 unc	122	197258	Keeper Belt Engine LH
23	192557	Bracket, Deflector	123	197259	Keeper Belt Engine RH
24	105304X	Cap, Sleeve	144	199204	Keeper Belt
25	197026	Spring, Torsion, Deflector	145	193197	Pulley Idler
26	110452X	Nut, Push	147	401971	Spring Return
27	424469	Shield, Deflector	152	584243501	Manual Clutch Cable
29	131491	Rod, Hinge	188	195161	Stud Fastener
30	173984	Screw Thdrol Rolling Wsh Hd	189	73900500	Nut Lock Hex Flange
31	187690	Washer, Spacer	192	197260	Bracket Brake Stand LH
32	197473	Pulley, Mandrel	195	17000612	Screw 3/8-16 x 3/4
33	400234	Nut, Toplock, Flanged	241	152927	Screw
34	72110612	Bolt Carr Sh. 3/8-16 x 1-1/2 Gr. 5	242	415598	Washout Port
36	197379	Pulley, Idler, Flat	--	416405	Quick Connect Coupling
37	19131316	Washer	--	192870	Mandrel Assembly (Includes housing (key #14), shaft assembly (key #13), and bearing only (key #15) - pulley/nut/washer and blade bolt/washers not included)
38	432520	Keeper Belt LH Mandrel			Replacement Mower, Complete
40	73900600	Nut, Lock Flg. 3/8-16 unc			
42	198410	Spring Torsion Brake			
43	197256	Spring Torsion Retainer			
46	137729	Screw 1/4-20 x 5/8	--	437732	
47	197250	Bracket Clutch Cable			
55	437110	Arm, Idler			
56	199092	Spacer, Retainer			
57	17000616	Screw 3/8-16 x 1			
59	141043	Guard, Tuv Idler			
60	197261	Arm Brake Mower			
62	72110616	Bolt 3/8-16 unc x 2			
63	199477	Arm Brake Mower			

**NOTE:** All component dimensions given in U.S. inches  
1 inch = 25.4 mm

# TRACTOR - - MODEL NUMBER 917.203800

## LIFT ASSEMBLY



KEY NO.	PART NO.	DESCRIPTION
2	422027	Shaft Asm., Lift
3	195231	Lever Asm., Lift RH
7	445060X428	Grip, Lever
10	196314	Spring Torsion
87	194209	Pin Cotter 7/16 Bow Tie Lock
88	410710	Spring Lift Assist
89	19191912	Washer Clear Zinc
90	194208	Pin Cotter 5/16 Bow Tie Lock

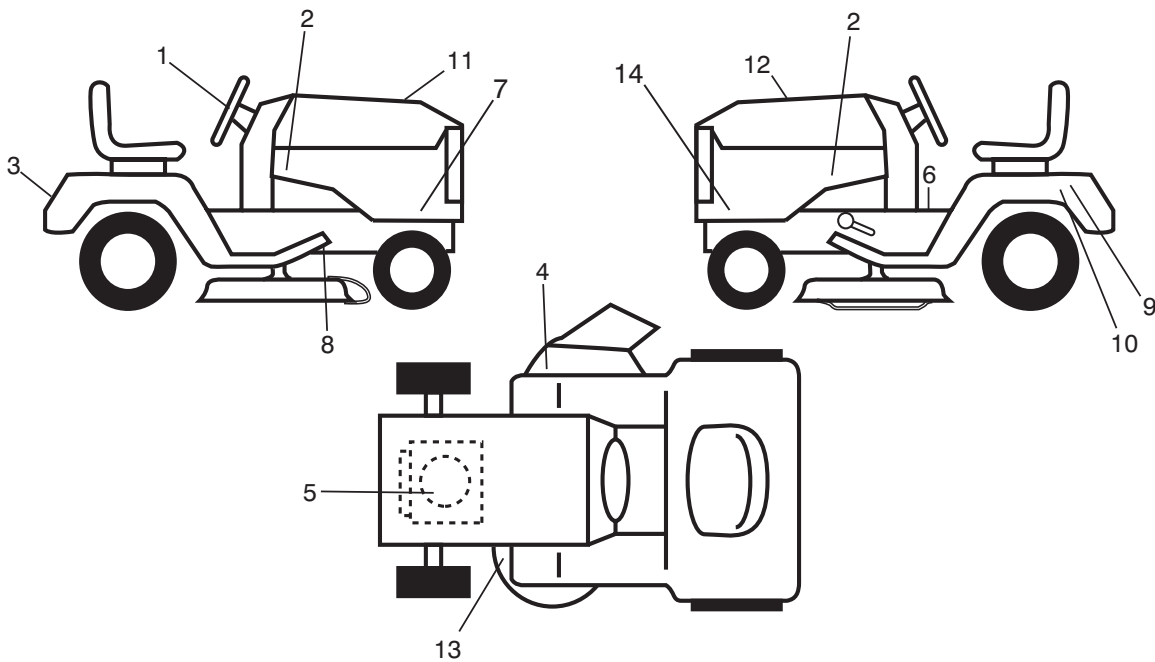
KEY NO.	PART NO.	DESCRIPTION
91	195181	Link Lift Susp Mower Rear
97	17000612	Screw 3/8-16 x .75
98	195270	Link Lift Susp. Front Mower
100	73930600	Nut Centerlock 3/8-16 unc
101	407003	Link Asm Lift FXD

**NOTE:** All component dimensions given in U.S. inches  
1 inch = 25.4 mm



# TRACTOR -- MODEL NUMBER 917.203800

## DECALS



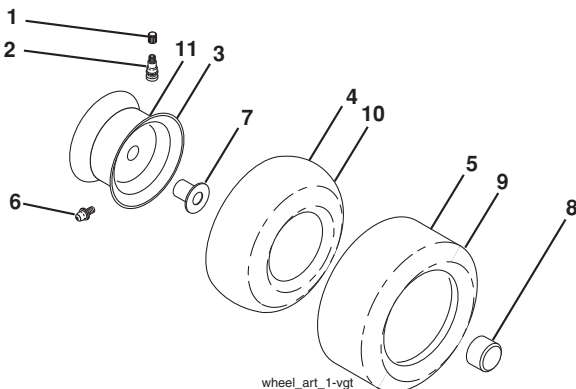
### KEY PART NO. NO.

KEY PART NO.	NO.	DESCRIPTION
1	581894601	Decal, Steering
2	585767601	Decal, Hood
3	441121	Decal, Fender
4	581579501	Decal, Mower
5	585722401	Decal, Engine HP
6	581578801	Decal, Fender Warning
7	586207301	Decal, Sideskirt RH
8	421534	Decal, V-Belt Schematic
9	434996	Decal, Battery Warning

### KEY PART NO. NO.

KEY PART NO.	NO.	DESCRIPTION
10	434995	Decal, Battery
11	441312	Decal, Replacement
12	585571401	Decal, Customer Maint.
13	581580001	Decal, Mower V-Belt SCH.
14	586207302	Decal, Sideskirt LH
--	193226X428	Pad, Footrest LH
--	193227X428	Pad, Footrest RH
--	586066027	Manual, Operator's (Eng/Span)
--	586066026	Manual, Parts

## WHEELS & TIRES

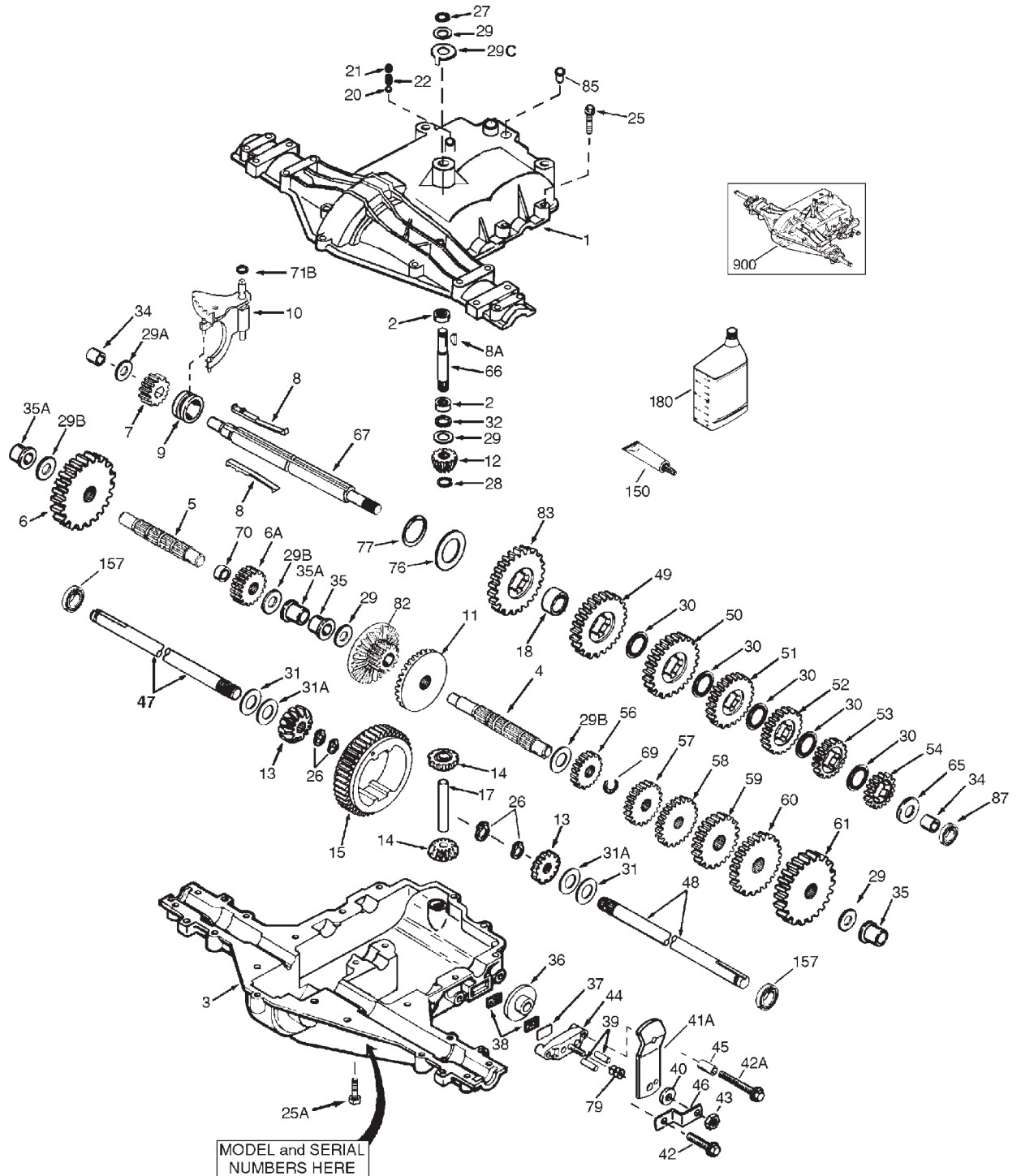


### KEY PART NO. NO.

KEY PART NO.	NO.	DESCRIPTION
1	59192	Cap, Valve, Tire
2	65139	Stem, Valve
3	106732X613	Rim Assembly, Front
4	59904	Tube, Front
5	106222X	Tire, Front 15 x 6-6
6	278H	Fitting, Grease
7	9040H	Bearing, Flange
8	104757X428	Cap, Axle
9	138468	Tire, Rear 20 x 8-8
10	7152J	Tube, Rear
11	106108X613	Rim Assembly, Rear
--	144334	Sealant, Tire (10 oz. Tube)

**NOTE:** All component dimensions given in U.S. inches  
1 inch = 25.4 mm

**TRACTOR - - MODEL NUMBER 917.203800**  
**PEERLESS TRANSAXLE - MODEL NUMBER 206-565**



## TRACTOR - - MODEL NUMBER 917.203800

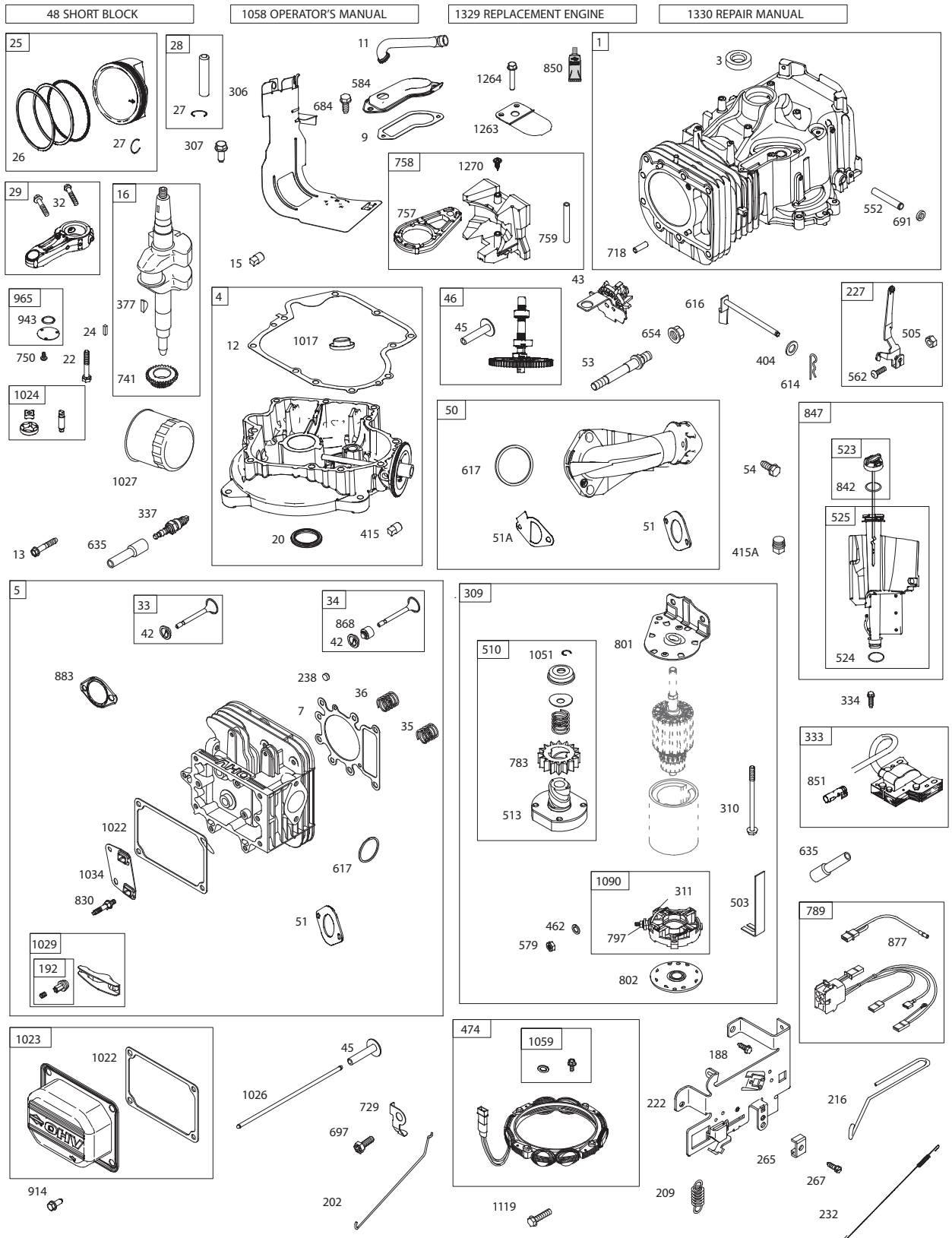
### PEERLESS TRANSAXLE - MODEL NUMBER 206-565

KEY NO.	PART NO.	DESCRIPTION	KEY NO.	PART NO.	DESCRIPTION
1	772147	Transaxle Cover	41A	790058	Brake Lever
2	780086A	Needle Bearing 5/8"	42	792073A	Screw 1/4-20 x 1-1/4"
3	770128	Transaxle Case	42A	792085A	Screw 1/4-20 x 2-1/4"
4	776395	Countershaft	43	792075	Locknut 5/16-24
5	776409	Output Shaft	44	790025	Brake Pad Holder
6	778364	Spur Gear (38 teeth)	45	786067	Spacer .2625 x 1.0
6A	778369	Spur Gear (15 teeth)	46	786086	Brake Lever Bracket
7	778330	Spur Gear (11 teeth)	47	774690	Axle (11-15/16" long)
8	792180	Shift Key	48	774691	Axle (16-1/2" long)
8A	792047	Woodruff Key #9	49	778356	Spur Gear (29 teeth)
9	784352	Shift Collar	50	778338	Spur Gear (27 teeth)
10	784378	Shift Rod & Fork	51	778354	Spur Gear (23 teeth)
11	778334	Bevel Gear (30 teeth)	52	778313	Spur Gear (19 teeth)
12	778309	Input Bevel Pinion (13 teeth)	53	778350	Spur Gear (16 teeth)
13	778368	Bevel Gear (13 teeth) (Incl. 14)	54	778346	Spur Gear (15 teeth)
14	778368	Bevel Pinion (13 teeth) (Incl. 13)	56	778355	Spur Gear (11 teeth)
15	778370	Ring Gear (43 teeth)	57	778351	Spur Gear (21 teeth)
17	786188	Drive Pin	60	778349	Spur Gear (24 teeth)
18	786102	Spacer 1.130 X .695	61	778345	Spur Gear (25 teeth)
20	792077A	Ball 5/16" dia	65	780189	Flat Washer .563 ID x .062W
21	792211	Cap Screw 3/8-16 x 3/8"	66	776422	Input Shaft
22	792079	Spring .310 OD x .625 L	67	776396	Shifter & Brake Shaft
25	792073A	Screw 1/4-20 x 1-1/4"	69	792170	Retaining Ring
25A	792177	Screw 1/4-20 x 1-3/8"	70	786187	Spacer .890
26	792125	Retaining Ring (pkg of 2)	71B	788092	"O" Ring
27	792035	Retaining Ring	76	780090	Flat Washer 1.128 ID x .058W
28	788040	Retaining Ring	77	788078A	Inverted Retaining Ring
29	780072	Thrust Washer .627 ID x .031W	79	792144	Spring .430 OD x .5000 L
29A	780160	Thrust Washer .563 ID x .031W	82	778333	Bevel & Spur Gear (30 & 13 teeth)
29B	780051	Thrust Washer .762 ID x .031W	83	778338	Spur Gear (27 teeth)
29C	780199	Anti-Rotation Washer .632	85	792154	Oil Fill Plug
30	780108	Cup Washer 1.127 ID x .032W	87	788089A	Oil Seal 9/16"
31	780001	Flat Washer .750 ID x .056W (Use As Needed)	150	788093A	Liquid Gasket RTV Silicone
31A	780195	Flat Washer .750 ID x .062W	157	788088A	Oil Seal 3/4"
32	788083	Oil Seal 5/8"	180	730229A	Gear Oil 80W90
34	780194	Bushing .563	900	794691	Replacement MST-206-545C Transaxle
35	780193	Flanged Bushing 5/8" ID	900	--	Remove: 790079 Brake Lever
35A	780197	Flanged Bushing .751	900	---	Add: 790058 Brake Lever
36	790075	Brake Disk			
37	790007	Brake Pad Plate			
38	799021	Brake Pad (pkg of 2)			
39	786026	Dowel Pin			
40	792076A	Flat Washer .312 ID x .059W			

**NOTE:** All component dimensions given in U.S. inches  
1 inch = 25.4 mm

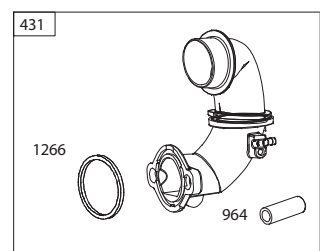
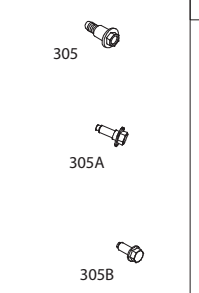
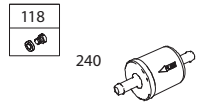
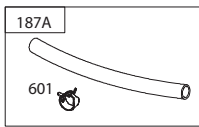
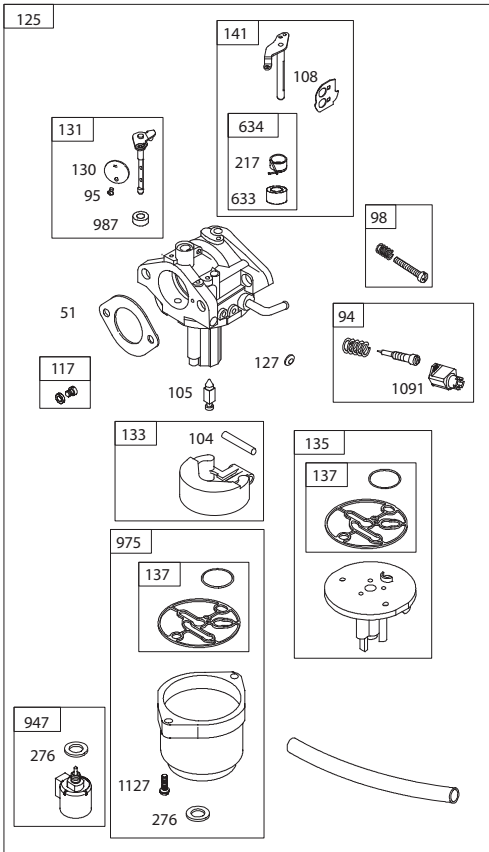
# TRACTOR - - MODEL NUMBER 917.203800

## BRIGGS & STRATTON ENGINE-MODEL NUMBER 33R877, TYPE NUMBER 0002-G1

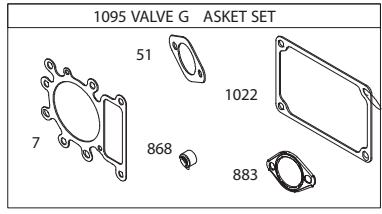
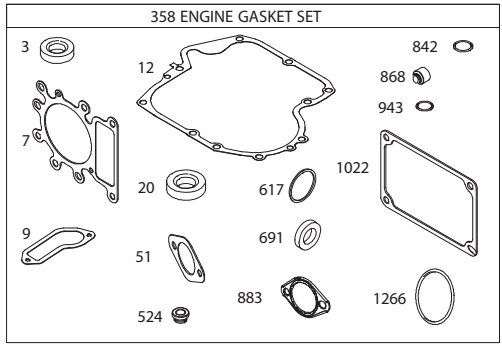
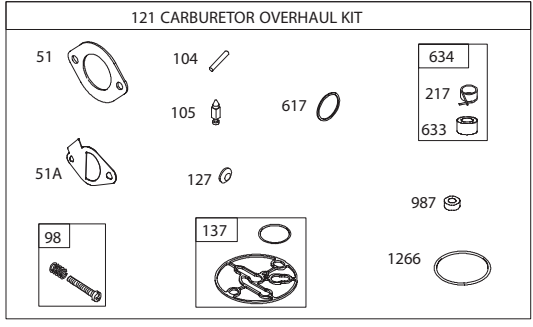
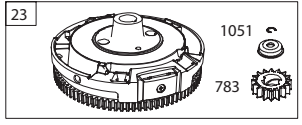
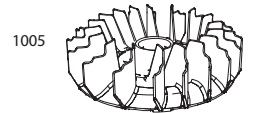
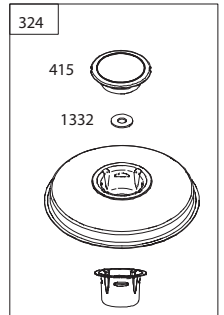
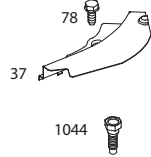
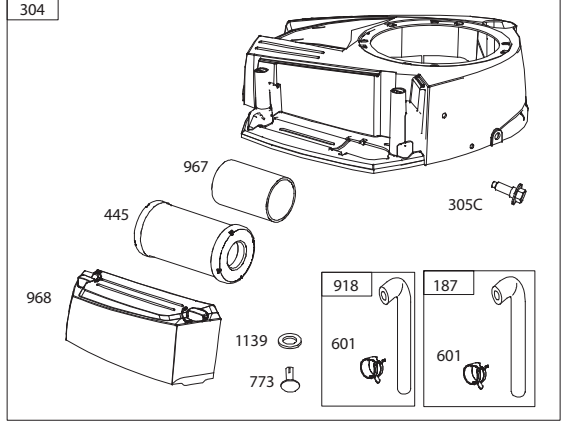
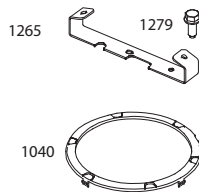


# TRACTOR - - MODEL NUMBER 917.203800

## BRIGGS & STRATTON ENGINE-MODEL NUMBER 33R877, TYPE NUMBER 0002-G1



### 1036 EMISSIONS LABEL



## TRACTOR - - MODEL NUMBER 917.203800

### BRIGGS & STRATTON ENGINE-MODEL NUMBER 33R877, TYPE NUMBER 0002-G1

KEY NO.	PART NO.	DESCRIPTION	KEY NO.	PART NO.	DESCRIPTION
1	591465	Cylinder Assembly	141	792777	Kit-Choke Shaft
3	391086s	Seal-Oil (Magneto Side)	187	791805	Line-Fuel (Formed)
4	592849	Sump-Engine	187A	791766	Line-Fuel (Cut to Required Length)
5	591750	Head-Cylinder	188	691693	Screw (Control Bracket)
7	794114	Gasket-Cylinder Head	192	691986	Adjuster-Rocker Arm
9	697109	Gasket-Breather	202	691841	Link-Mechanical Governor
11	794683	Tube-Breather	209	796260	Spring-Governor (Green)
12	697110	Gasket-Crankcase	216	691840	Link-Choke
13	592244	Screw (Cylinder Head)	217	695409	Spring-Choke Return
15	690946	Plug-Oil Drain	222	694042	Bracket-Control
16	591763	Crankshaft	227	691374	Lever-Governor Control
20	795387	Seal-Oil (PTO Side)	232	691842	Spring-Governor Link
22	692125	Screw (Crankcase Cover/Sump)	238	691843	Cap-Valve
23	591759	Flywheel	240	691035	Filter-Fuel
24	591757	Key-Flywheel (Steel)	265	691024	Clamp-Casing
25	95858	Piston Assembly (Standard)	267	794904	Screw (Casing Clamp)
	795877	Piston Assembly (.020" Oversize)	276	695410	Washer-Sealing
26	794126	Ring Set (Standard)	304	592814	Housing-Blower
	794127	Ring Set (.020" Oversize)	305	697102	Screw (Blower Housing) (1/4-20x1.21)
27	698469	Lock-Piston Pin			
28	795861	Pin-Piston	305A	793376	Screw (Blower Housing) (1/4-20x.68)
29	794571	Rod-Connecting			
32	791118	Screw (Connecting Rod)	305B	795891	Screw (Blower Housing to Intake Elbow) (#10-16x.43)
33	591752	Valve-Exhaust			
34	591751	Valve-Intake	305C	799370	Screw (Blower Housing) (1/4-20x.90)
35	691279	Spring-Valve (Intake)			
36	691279	Spring-Valve (Exhaust)	306	794953	Shield-Cylinder
37	699882	Guard-Flywheel	307	691693	Screw (Cylinder Shield)
42	499586	Keeper-Valve	309	693551	Motor-Starter
43	691968	Slinger-Governor/Oil	310	690323	Screw (Starter Motor)
45	690564	Tappet-Valve	311	497608	Brush Set
46	793880	Camshaft	324	796309	Screen/Cup Assembly
48	N/A	Short Block (Not Available at this Printing)	333	799650	Armature-Magneto
			334	691061	Screw (Magneto Armature)
50	592842	Manifold-Intake	337	491055s	Plug-Spark
51	692137	Gasket-Intake	358	796187	Gasket Set-Engine
51A	796081	Gasket-Intake	377	691639	Key-Woodruff
53	591260	Stud (Carburetor)	404	691691	Washer (Governor Crank)
54	691148	Screw (Intake Manifold)	415	794129	Plug (Cover/Retainer)
78	691693	Screw (Flywheel Guard)	415A	794903	Plug (Intake Manifold)
94	793610	Kit-Idle Mixture	431	799043	Elbow-Intake
95	690718	Screw (Throttle Valve)	445	793569	Filter-Air Cleaner Cartridge
98	695408	Kit-Idle Speed	462	691261	Washer (Starter Cable)
104	694918	Pin-Float Hinge	474	592831	Alternator
105	696136	Valve-Float Needle	503	691532	Strap-Starter
108	695419	Valve-Choke	505	691251	Nut (Governor Control Lever)
117	796251	Jet-Main (Standard)	510	693699	Drive-Starter
118	791406	Jet-Main (High Altitude)	513	692024	Clutch-Drive
121	796184	Kit-Carburetor Overhaul	523	699908	Dipstick
125	591736	Carburetor	524	691032	Seal-Dipstick Tube
127	690727	Plug-Welch	525	697184	Tube-Dipstick
130	792747	Valve-Throttle	552	697144	Bushing-Governor Crank
131	792765	Kit-Throttle Shaft	562	691119	Screw (Governor Control Lever)
133	694914	Float-Carburetor	579	691029	Nut (Starter Cable)
135	698780	Tube-Fuel Transfer	584	794682	Cover-Breather Passage
137	698781	Gasket-Float Bowl	601	791850	Hose-Clamp (Green)

## TRACTOR - - MODEL NUMBER 917.203800

### BRIGGS & STRATTON ENGINE-MODEL NUMBER 33R877, TYPE NUMBER 0002-G1

KEY NO.	PART NO.	DESCRIPTION	KEY NO.	PART NO.	DESCRIPTION
614	691620	Pin-Cotter (Governor Crank)	1044	698139	Screw (Flywheel)
616	692012	Crank-Governor	1051	691265	Ring-Retaining
617	692138	Seal-O Ring (Intake Manifold)(Red)	1058	277675	Operator's Manual
633	699813	Seal-Choke/Throttle (Choke Shaft)	1059	698516	Kit-Screw/Washer (Alternator)
634	698779	Spring/Seal Assembly	1090	691293	Retainer-Brush
635	691909	Boot-Spark Plug	1091	691333	Cap-Limiter
654	690958	Nut (Carburetor)	1095	794152	Gasket Set-Valve
684	697157	Screw (Breather Passage Cover)	1119	691183	Screw (Alternator)
691	692407	Seal-Governor Shaft	1127	695407	Screw (Float Bowl)
697	791680	Screw (Drive Cap)	1139	796449	Washer (Fuel Pump)
718	690959	Pin-Locating	1263	697124	Reed-Breather
729	691224	Clip-Wire	1264	697104	Screw (Breather Reed)
741	697128	Gear-Timing	1265	794151	Support-Blower Housing
750	790832	Screw (Oil Pump Cover)	1266	691917	Seal-O Ring (Intake Elbow) (Red)
757	793242	Link-Counterweight	1270	793243	Plug-AVS Counterweight
758	793763	Counterweight	1279	691108	Screw (Blower Housing Support)
759	697392	Pin-Counterweight	1329	N/A	Replacement Engine (Not Available at this Printing)
773	796448	Retainer (Fuel Pump)			
783	693713	Gear-Pinion	1330	N/A	Repair Manual (Not Available at this Printing)
789	698329	Harness-Wiring			
797	693167	Nut (Brush Retainer)	1332	591991	Washer (Rotating Screen)
801	691283	Cap-Drive			
802	691286	Cap-End			
830	691095	Stud-Rocker Arm			
842	691031	Seal-O Ring (Dipstick)			
847	790442	Dipstick/Tube Assembly			
850	100106	Sealant-Liquid			
851	692424	Terminal-Spark Plug			
868	690968	Seal-Valve			
877	790544	Wire/Connector-Alternator			
883	692236	Gasket-Exhaust			
914	691108	Screw (Rocker Cover)			
918	791744	Hose-Vacuum (Cut to Required Length)			
943	690589	Seal-O Ring (Oil Pump Cover)			
947	699915	Solenoid-Fuel			
964	799159	Cap-Connector			
965	499613	Cover-Oil Pump			
967	793685	Filter-Pre Cleaner			
968	591644	Cover-Air Cleaner			
975	699502	Bowl-Fuel			
987	698777	Seal-Throttle Shaft			
1005	796084	Fan-Flywheel			
1017	796981	Screen-Oil Pump			
1022	272475s	Gasket-Rocker Cover			
1023	797421	Cover-Rocker			
1024	794644	Pump-Oil			
1026	692003	Rod-Push (Intake) (Aluminum)			
	692011	Rod-Push (Exhaust) (Steel)			
1027	795890	Filter-Oil			
1029	691751	Arm-Rocker			
1034	690822	Guide-Push Rod			
1036		Label-Emissions (Available from a Briggs & Stratton Authorized Dealer)			
1040	698368	Plate-Trim			

Carburetor Overhaul Kit                      Key No. 121  
 Engine Gasket Set                              Key No. 358  
 Valve Gasket Set                                Key No. 1095

**NOTE:** All component dimensions given in U.S.  
 inches 1 inch = 25.4 mm

# CRAFTSMAN®

Product questions or problems?

# 1-888-331-4569

## Customer Care Hot Line

**Get answers to questions, troubleshoot problems,  
order parts, or schedule repair service.**

Para respuestas a preguntas o problemas, y ordenar  
piezas o pedir servicio para la reparación de su equipo.

**To help us help you, register your product at [www.craftsman.com/registration](http://www.craftsman.com/registration)**

Para poderte ayudar mejor, registra tu producto en [www.craftsman.com/registration](http://www.craftsman.com/registration)

**Join the Craftsman Club today!**

# CRAFTSMAN® CLUB

[www.craftsman.com/signup](http://www.craftsman.com/signup)

**Receive exclusive member benefits including special pricing and offers,  
project sharing, expert advice, and SHOP YOUR WAY REWARDS!**

Como miembro exclusivo, recibe diversos beneficios como ofertas, precios especiales, proyectos nuevos, consejos de expertos y nuestro programa de puntos SHOP YOUR WAY REWARDS!

© Registered Trademark / ™ Trademark of KCD IP, LLC in the United States, or Sears Brands, LLC in other countries  
© Marca Registrada / ™ Marca de Fábrica de KCD IP, LLC en Estados Unidos, o Sears Brands, LLC in otros países