



Super Bagger Lawn Mower

Model No. 20192 - 290000001 and up.

Parts Catalog

Ordering Replacement Parts

To order replacement parts, please supply the part number, the quantity, and the description of each part desired.

Understanding Reference Numbers

Each identified part in an illustration has a reference number. The reference number for a part also appears in the parts list, along with other information about the part.

This catalog uses two special reference number formats, one to indicate parts in a service assembly and another to indicate the quantity of a given part in an illustration.

Service Assembly Reference Numbers

Parts in service assemblies have reference numbers in the form a:b. The a represents the reference number of the entire service assembly and the b represents a sequential number unique to each part within the service assembly.

For example, a wheel assembly might be identified by reference number 6, the tire by 6:1, the valve by 6:2, and the wheel by 6:3. When you order the assembly identified by reference number 6, you receive all parts identified by reference numbers 6:1, 6:2, and 6:3. However, you may also order any part individually. Reference numbers of this type appear in illustrations and in part lists.

Reference Numbers Indicating Quantity

In an illustration, if a reference number indicates more than one part, the reference number has the form nX y. The n represents the quantity of the part, the X is the multiplication symbol, and the y represents the reference number.

For example, in an illustration, the reference number 2X 37 means that two of the parts identified by reference number 37 are indicated.

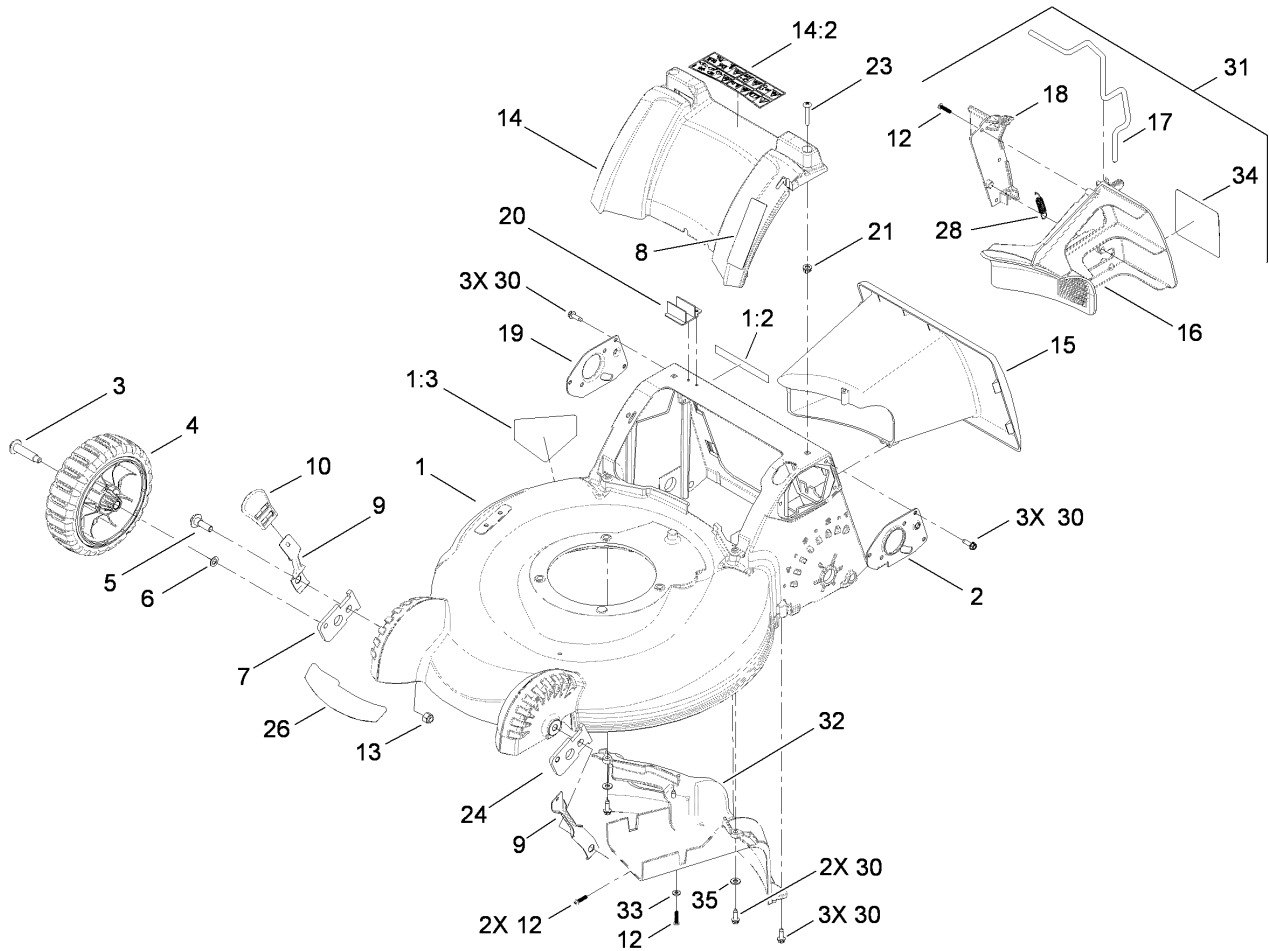
Contents

Description	Page	Description	Page
Deck Housing, Front Wheel and Rear Door Assembly 3	Upper Handle Assembly 5
Side Discharge, Transmission and Rear Wheel Assembly 4	Lower Handle Assembly 6
		Engine and Blade Assembly 7
		Rear Bag Assembly 8
		Attachments and Accessories List 9

Part Description Abbreviations

Part descriptions in this catalog may include the following abbreviations.

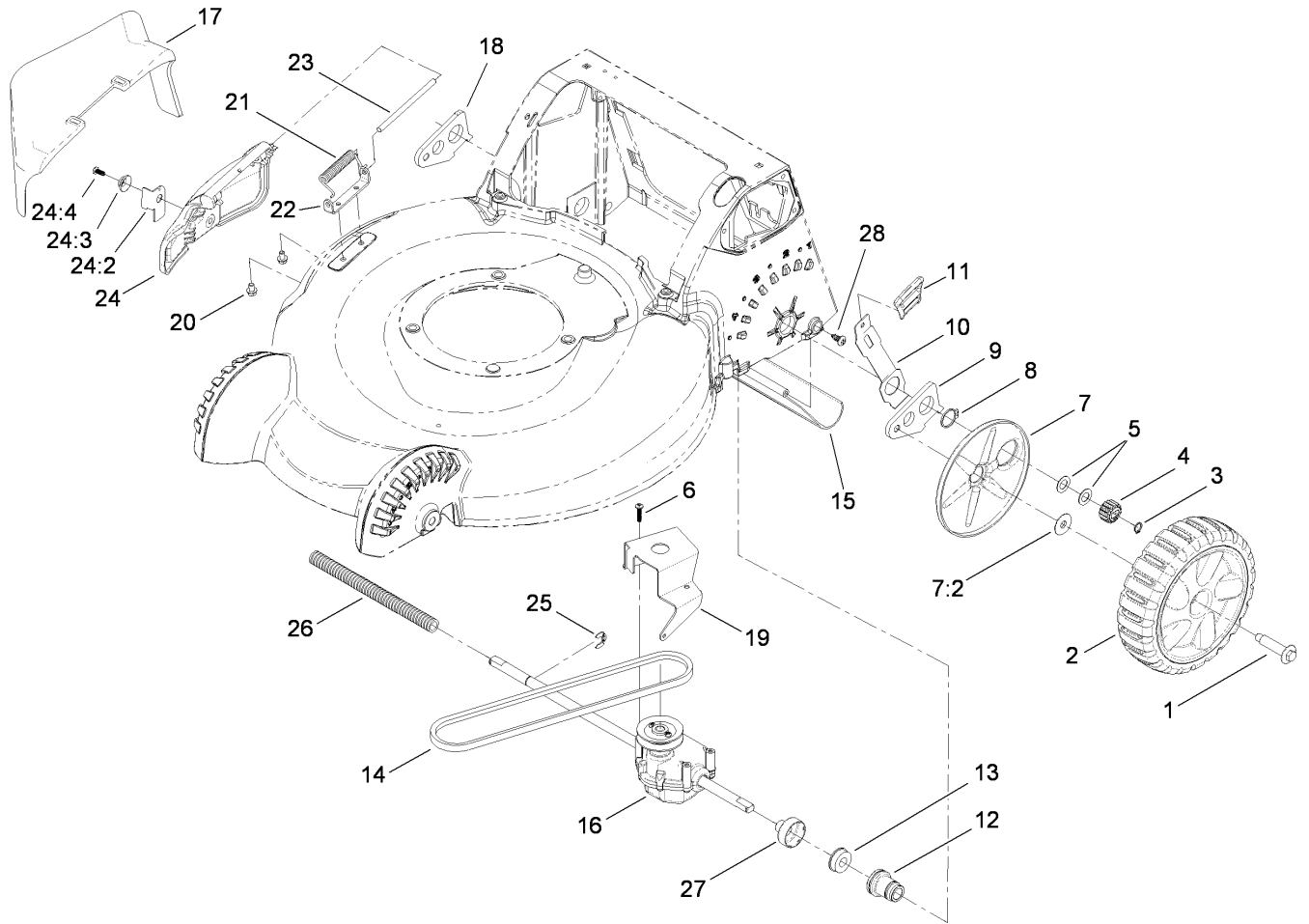
AR. as required	HYD. hydraulic
ASM. assembly	LH. left hand
BBC. blade brake clutch	NI. nylon insert
CARR. carriage	NPTF. national pipe thread fine
DEG. degrees	PFH. phillips flat head
EXT. external	PPH. phillips pan head
FH. flat head	PPHTF. phillips pan head thread forming
GA. gauge	PRH. phillips round head
HD. heavy-duty	PTH. phillips truss head
HF. hex flange	PTO. power-take-off
HH. hex head	RH. right hand
HHF. hex head flange	ROPS. roll-over protection system
HHFTF. hex head flange thread forming	SFH. slotted fillister head
HJ. hex jam	SHH. slotted hex head
HLH. hex lag head	SHWH. slotted hex washer head
HOC. height-of-cut	SPH. slotted pan head
HSBH. hex socket button head	SQH. square head
HSFH. hex socket flat head	SRH. slotted round head
HSH. hex socket head	STD. standard
HWH. hex washer head	TAP. self tapping
HWHTF. hex washer head thread forming	TTH. torx truss head



Deck Housing, Front Wheel and Rear Door Assembly

Ref	Part No.	Qty.	Description
1	117-4167	1	Housing ASM
1:2	107-3889	1	Decal-Safety
1:3	94-8072	1	Decal-Danger
2	110-9415-03	1	Mount-Handle, LH
3	614650	2	Bolt-Shoulder
4	117-4103	2	8 Inch Wheel ASM
5	614672	2	Bolt-Shoulder
6	40-1940	2	Washer
7	110-9421	1	Arm-Pivot, RH
8	117-5902	1	Decal-Quick Stow
9	110-9434	2	Arm-Spring, Front
10	110-0549	2	Knob-HOC
11	108-7476	6	Screw-Plastite
12	3296-39	2	Nut-Lock, NI
13	115-3177	1	Cover-Rear
14	114-2820	1	Decal-Warning
14:2	110-9455	1	Tunnel
15	110-9446	1	Plug-Mulch, LH
16	110-9448	1	Latch-Plug, Mulch
17	110-9447	1	Plug-Mulch, RH
18	110-9416-03	1	Mount-Handle, RH
19	110-1786	1	Module-Switch
20	94-1610	2	Nut-Clip
21	108-0965	2	Screw-PTH

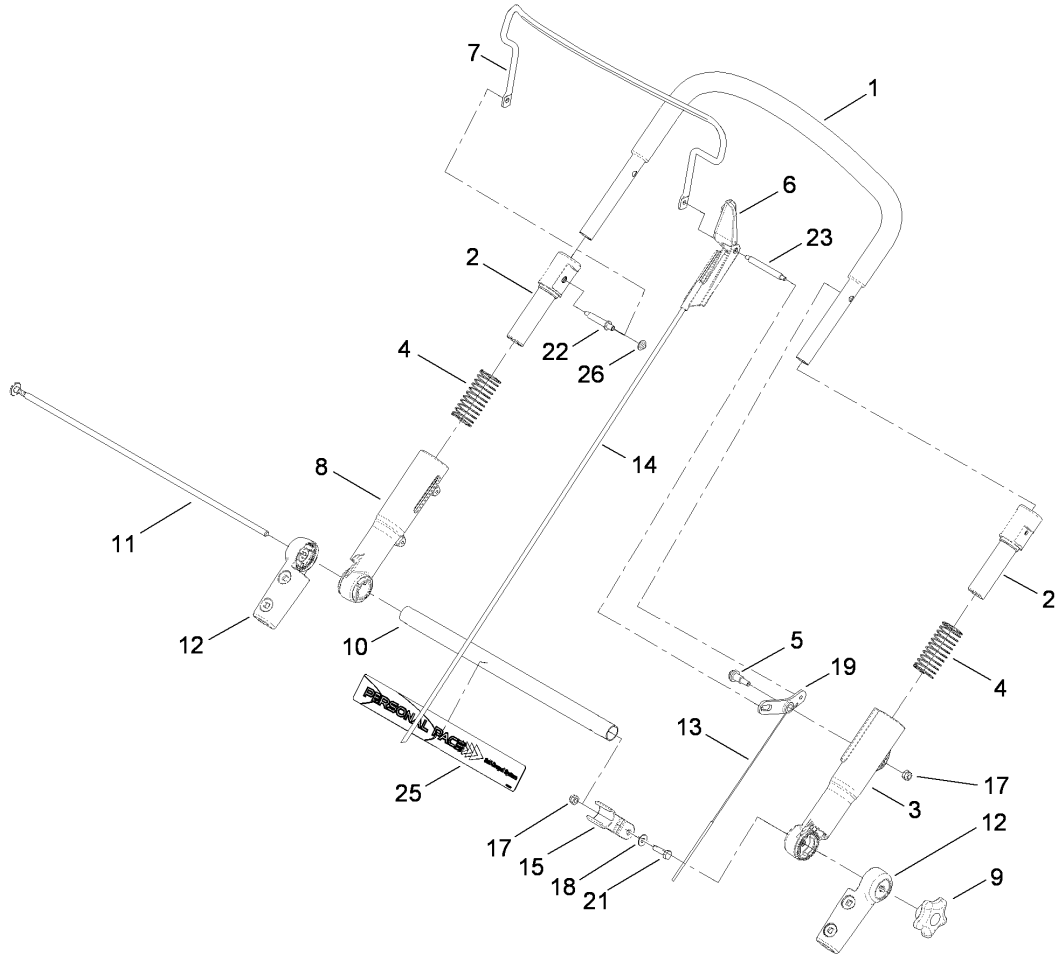
Ref	Part No.	Qty.	Description
22	110-9420	1	Arm-Pivot, LH
23	117-4164	1	Decal-Super Bagger
24	110-9458	1	Spring-Extension
25	49-2040	11	Screw-HWHTF
26	110-9468	1	Mulch Plug ASM
27	110-9413	1	Baffle-Rear
28	3256-14	1	Washer-Flat
29	110-9457	1	Decal-Plug, Mulch
30	3256-22	2	Washer-Flat



Side Discharge, Transmission and Rear Wheel Assembly

Ref	Part No.	Qty.	Description
1	614650	2	Bolt-Shoulder
2	117-4104	2	Rear Wheel ASM
3	32151-61	2	Ring-Retaining
4	110-9417	2	Pinion
5	36-4780	2	Washer-Plain
6	108-7476	3	Screw-Plastite
7	117-4197	2	Wheel Cover ASM
7:2	614426	1	Washer-Stepped
8	32151-36	2	Ring-Retaining
9	108-9344	1	Arm-Rear Pivot, LH
10	110-9445	2	Arm-Spring, Rear
11	110-0549	2	Knob-HOC
12	110-9422	2	Retainer-Bearing
13	104-8699	2	Bearing-Ball
14	110-9429	1	V-Belt
15	112-8768	1	Shield-Trailing
16	114-2812	1	Transmission ASM
17	105-3028	1	Chute-Discharge, Side
18	108-9343	1	Arm-Rear Pivot, RH
19	114-7977-03	1	Bracket-Transmission
20	99-8445	2	Screw-HWH
21	99-5293	1	Spring-Torsion
22	112-6416	1	Bracket-Cover
23	99-5291	1	Rod-Cover

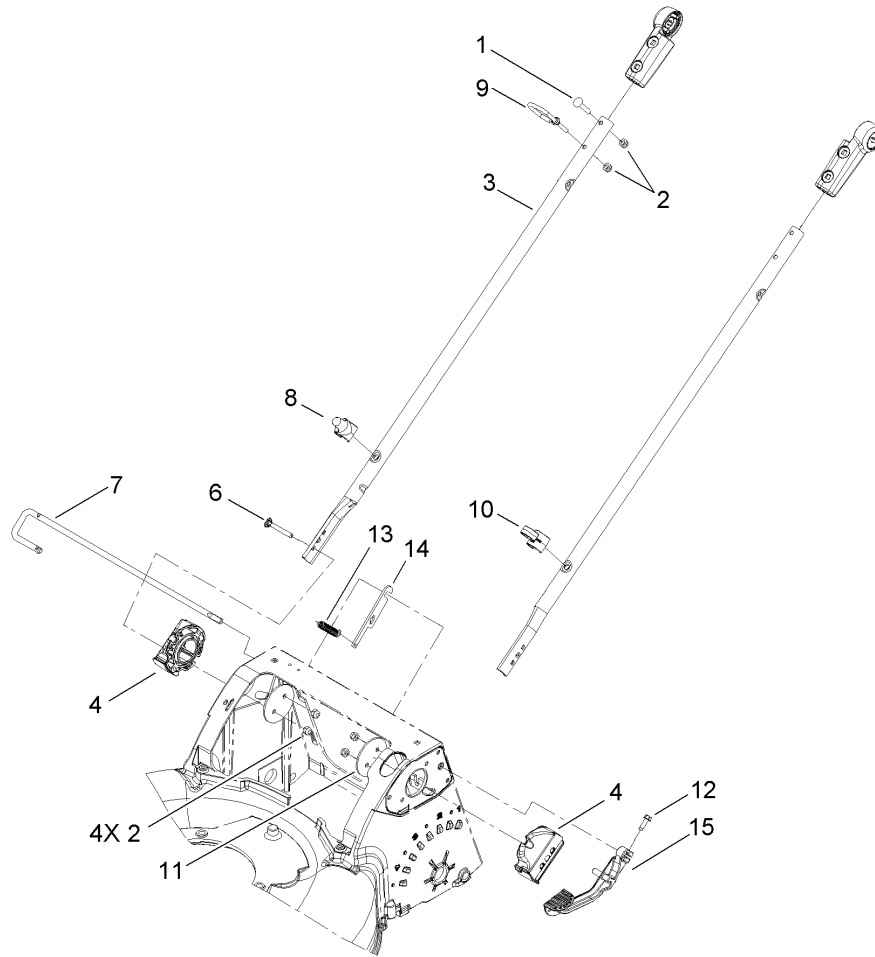
Ref	Part No.	Qty.	Description
24	106-8376	1	Discharge Door ASM
24:2	107-0795	1	Latch-Door
24:3	107-7456	1	Cap-Door
24:4	107-7461	1	Screw-Plastite
25	65-2720	1	Ring-Clip, Locking
26	24-7922	1	Cover-Shaft, Drive
27	114-2755	2	Cap-Bearing
28	117-1092	2	Screw-PPH



Upper Handle Assembly

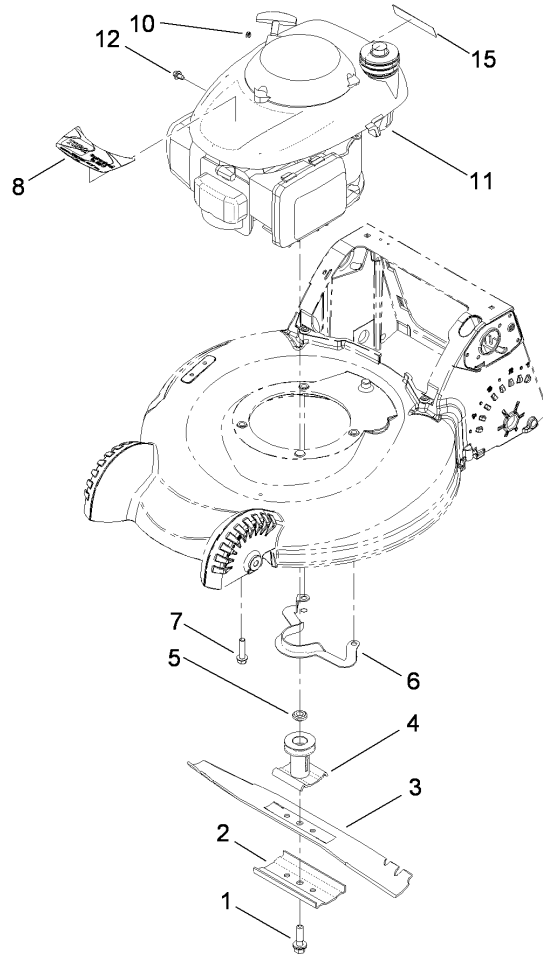
Ref	Part No.	Qty.	Description
1	108-0974	1	Upper Handle ASM
2	112-8754	2	Sleeve-Inner
3	112-1544	1	Sleeve-Outer, LH
4	107-3869	2	Spring-Compression
5	104-0858	1	Bolt-Shoulder
6	112-8764	1	Stop-Pivot
7	110-1819-03	1	Bail-Brake
8	112-1545	1	Sleeve-Outer, RH
9	106-4161	1	Knob-Handle
10	107-3867-03	1	Tube-Cross
11	107-3871	1	Rod-Threaded
12	107-3865	2	Mount-Handle, Lower
13	110-9465	1	Cable-Traction
14	107-3903	1	Cable-Brake
15	112-8801	1	Clamp-Cable
17	3296-73	2	Nut-Lock, NI
18	3256-1	1	Washer-Flat
19	107-3893	1	Lever-Traction
21	321-5	1	Screw-HH
22	108-0959	1	Pin-Handle
23	108-1008	1	Pin-Bail, LH
25	117-5901	1	Decal-Personal Pace
26	108-9378	1	Retainer-Push On

--	--	--	--



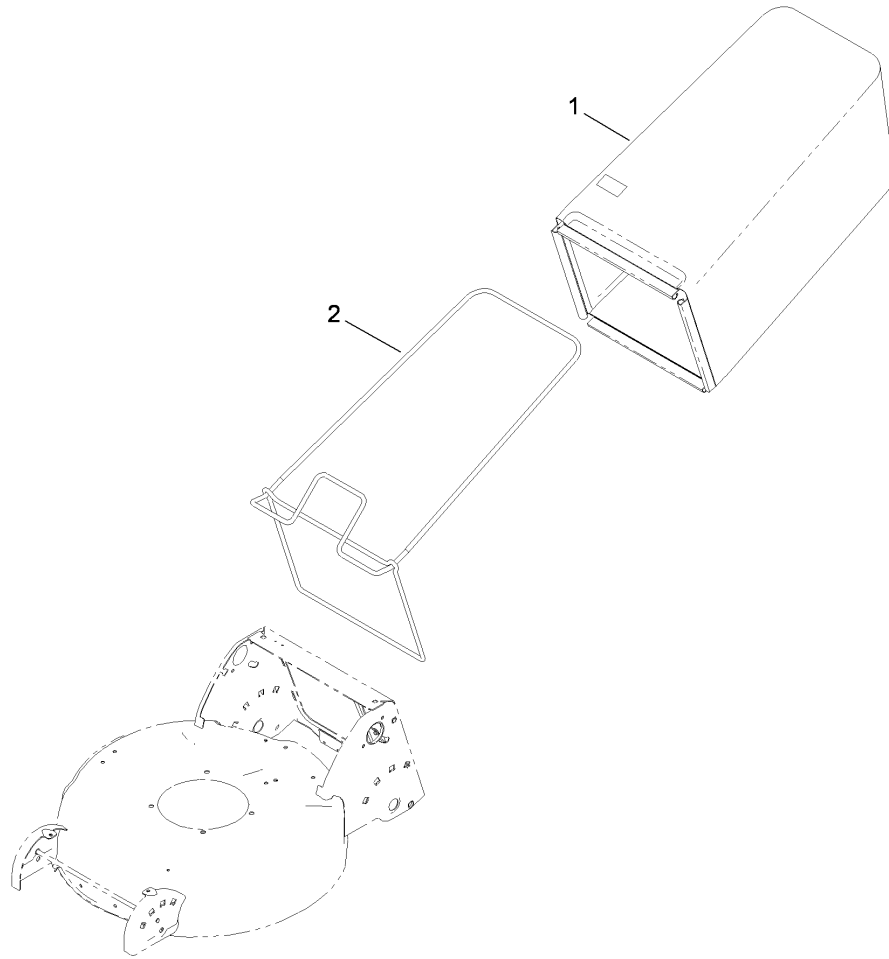
Lower Handle Assembly

Ref	Part No.	Qty.	Description	
1	108-0988	3	Screw-CARR	
2	3296-73	8	Nut-Lock, NI	
3	107-3887-03	2	Tube-Lower	
4	114-2791	2	Mount-Handle, Lower	
6	95-4453	4	Screw	
7	112-8755	1	Rod-Release, Handle	
8	117-4141	1	Guide-Rope, Lower	
9	107-3908	1	Guide-Rope, Upper	
10	106-6805	1	Guide-Cable	
11	107-3944-03	2	Plate	
12	49-2040	1	Screw-HWHTF	
13	112-1542	1	Spring-Extension	
14	112-1539	1	Plate-Rod, Release	
15	110-1823-03	1	Lever-Release	



Engine and Blade Assembly

Ref	Part No.	Qty.	Description				
1	112-8789	1	Bolt-Shoulder				
2	108-3766-03	1	Support-Blade				
3	108-0954-03	1	Blade-21 Inch				
4	114-2774	1	Driver-Blade				
5	106-3999	1	Spacer-Driver				
6	108-8110-03	1	Guide-Belt				
7	32144-102	3	Screw-HWH				
8	117-5955	1	Decal-Engine				
10	92-1701	1	Stop-Rope				
11	117-5903	1	Engine-Honda, Gcv160 Tier 3				
12	98-1394	1	Screw-HWH				
15	117-2718	1	Decal-Spark Arrester				



Rear Bag Assembly

Ref	Part No.	Qty.	Description
1	117-4191	1	Grass Bag ASM
2	112-8750-03	1	Frame-Bag

--	--	--	--

Attachments and Accessories

For 20192 - Super Bagger Lawn Mower

Product Name

Model/Part

Cruise Control Kit 89919

NOTES

NOTES

